

# POTRERO

## PEDESTRIAN SAFETY & WALKING SCHOOL BUS PROJECT

*February 9, 2017*



[1orush.org](http://1orush.org)



1

# PROJECT BACKGROUND

# WHAT...*IS THE PEDESTRIAN SAFETY & WALKING SCHOOL BUS PROJECT?*

Temporary roadway and public space improvements to enhance pedestrian safety and provide new community gathering areas.

## **WHAT...** *IS THE PEDESTRIAN SAFETY & WALKING SCHOOL BUS PROJECT?*

Temporary roadway and public space improvements to enhance pedestrian safety and provide new community gathering areas.

## **WHY...** *IS THE PROJECT BEING IMPLEMENTED?*

To respond to community desires for immediate pedestrian safety improvements during Rebuild Potrero construction.

# WHAT...*IS THE PEDESTRIAN SAFETY & WALKING SCHOOL BUS PROJECT?*

Temporary roadway and public space improvements to enhance pedestrian safety and provide new community gathering areas.

# WHY...*IS THE PROJECT BEING IMPLEMENTED?*

To respond to community desires for immediate pedestrian safety improvements during Rebuild Potrero construction.

# WHO...*IS INVOLVED IN THE PROJECT?*

YOU!



1brush.org

# WHAT...*IS THE PEDESTRIAN SAFETY & WALKING SCHOOL BUS PROJECT?*

Temporary roadway and public space improvements to enhance pedestrian safety and provide new community gathering areas.

# WHY...*IS THE PROJECT BEING IMPLEMENTED?*

To respond to community desires for immediate pedestrian safety improvements during Rebuild Potrero construction.

# WHO...*IS INVOLVED IN THE PROJECT?*

YOU!



# WHEN...*WILL THE PROJECT BE IMPLEMENTED?*

Implementation will begin in March 2017 and take place in phases through the Spring (more details at the end!).

A blue-tinted photograph of a city street intersection. In the foreground, a woman is pushing a stroller across a crosswalk. Other pedestrians are walking in various directions. A street sign for "St Louis" is visible above a traffic light. On the right, a building has a sign for "Guisados". The overall scene is a busy urban environment.

2

# INTERSECTION PEDESTRIAN SAFETY ENHANCEMENTS

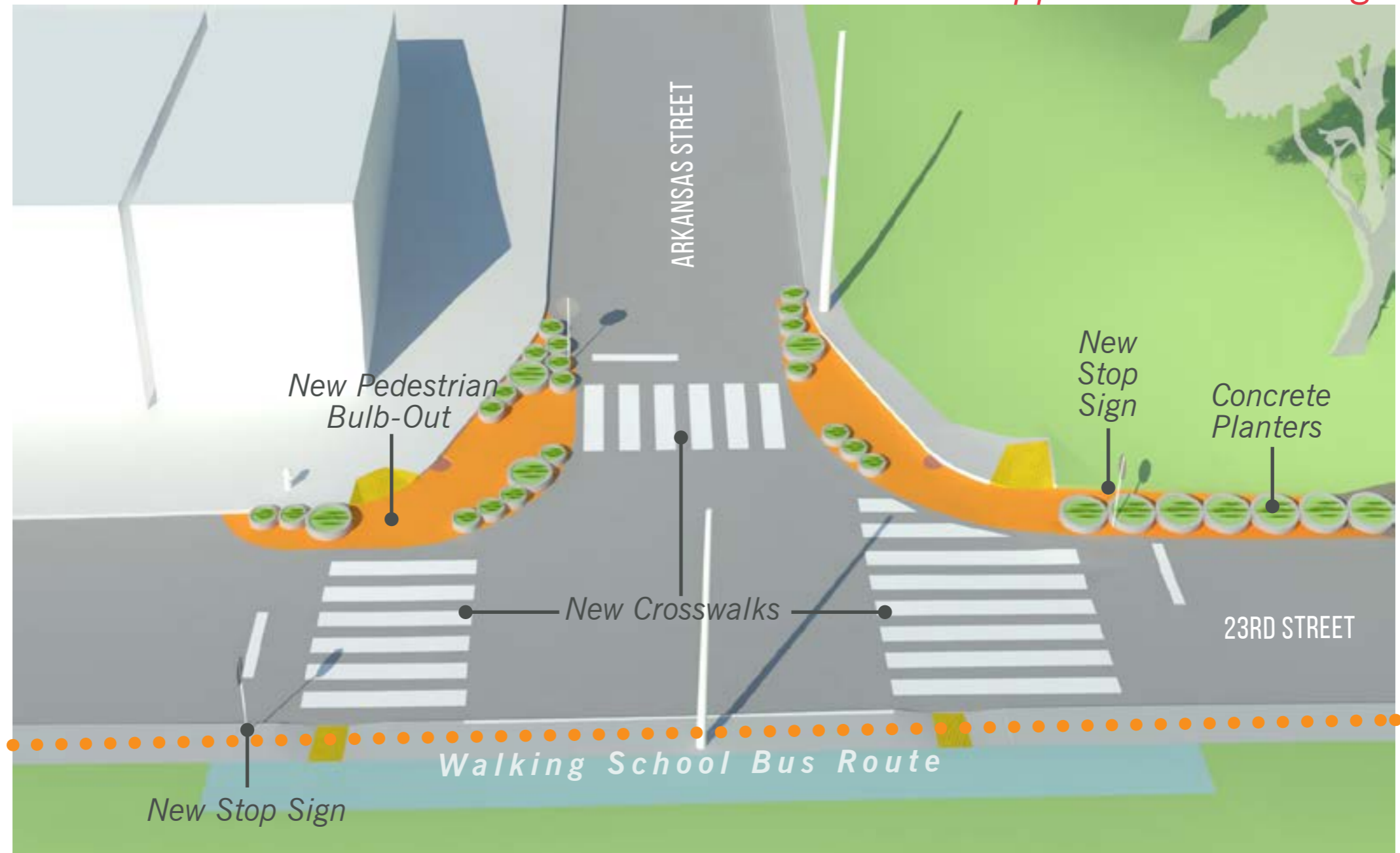




# INTERSECTION PEDESTRIAN SAFETY ENHANCEMENTS

23RD & ARKANSAS

*SFMTA-Approved Final Design*



# INTERSECTION SAFETY ENHANCEMENTS

23RD/DAKOTA & MISSOURI

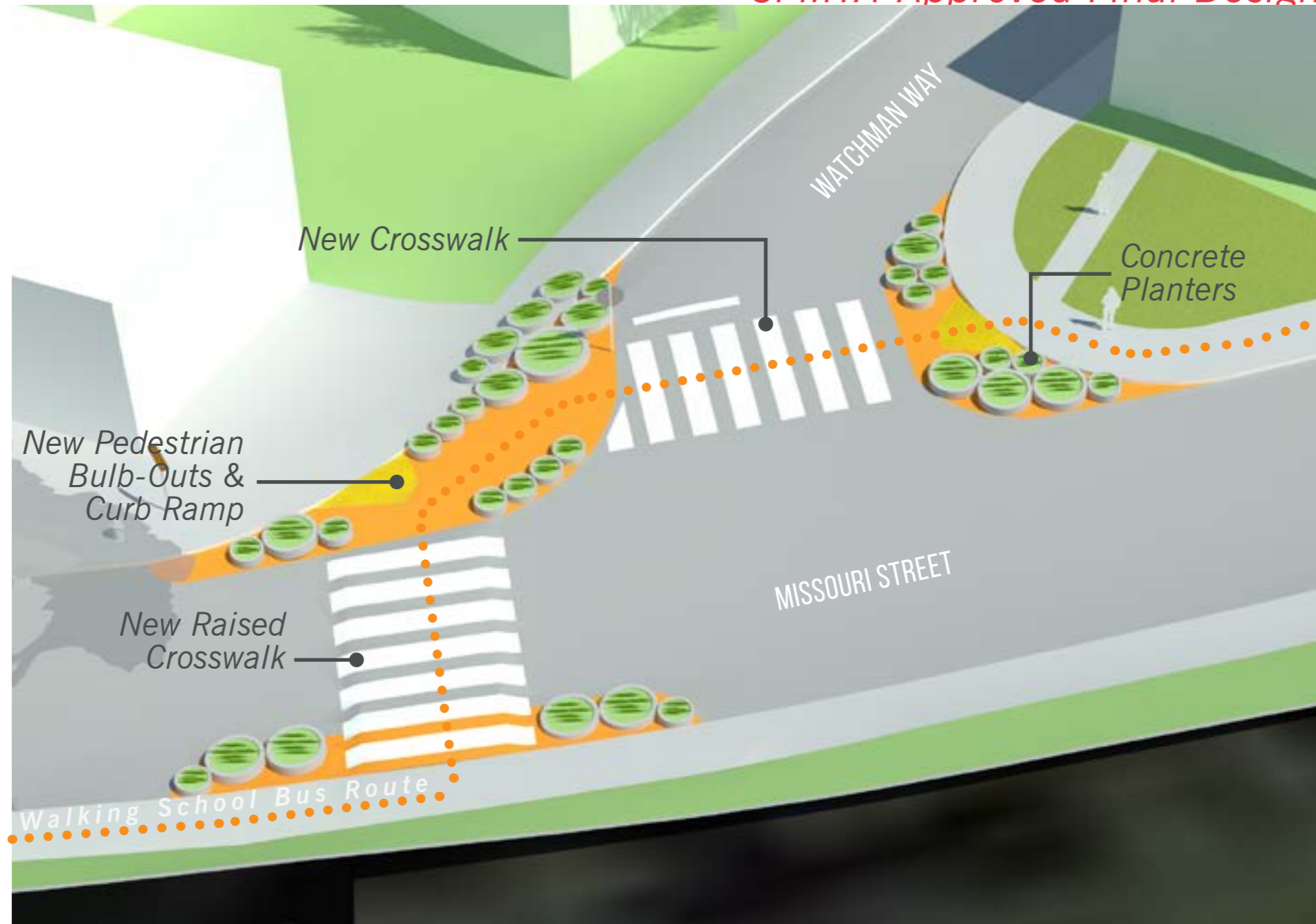
*SFMTA-Approved Final Design*



# INTERSECTION SAFETY ENHANCEMENTS

## MISSOURI & WATCHMAN

*SFMTA-Approved Final Design*



# INTERSECTION SAFETY ENHANCEMENTS

## 25TH & DAKOTA/TEXAS

*Concept Design Awaiting SFMTA Approval*



### **Phase 2 Improvements**

- *To be completed by Rebuild Potrero*
- *To include large bulb-outs, sidewalk extensions on 25th Street, crosswalks*
- *Construction estimated in Spring 2018*

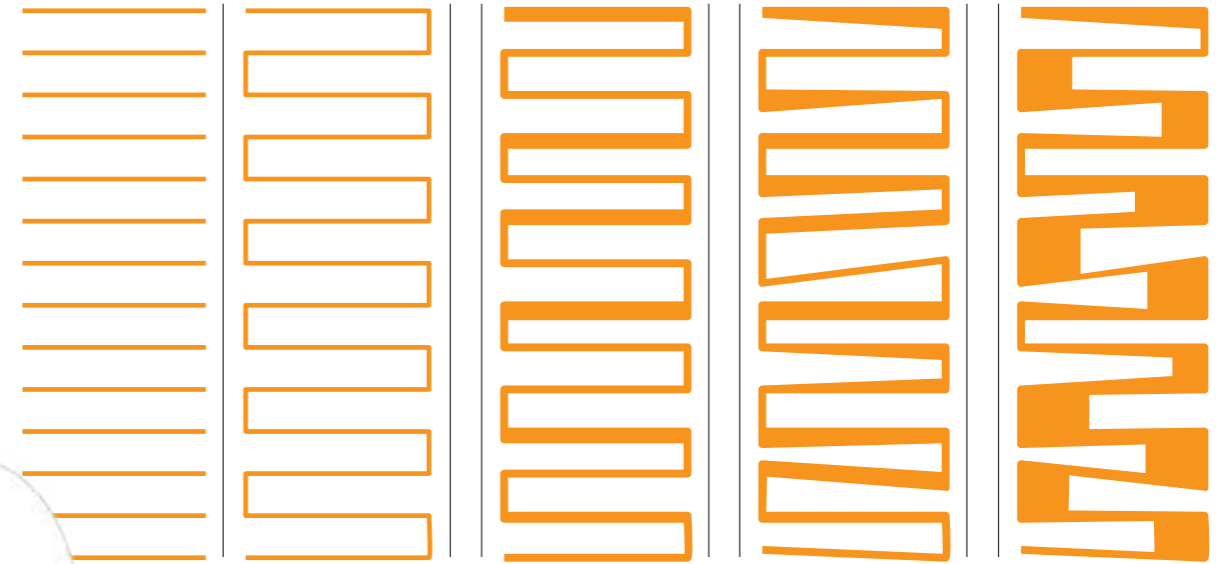


3

**WALKING SCHOOL BUS PATH**



# WALKING SCHOOL BUS ROUTE



LINE

CONFIDENT  
LINE

EXCITED  
LINE

ACTIVE  
LINE

PLAYFUL  
LINE

CURIOUS  
LINE

INTELLIGENT  
LINE

SOCIABLE  
LINE

MISCHIEVOUS  
LINE

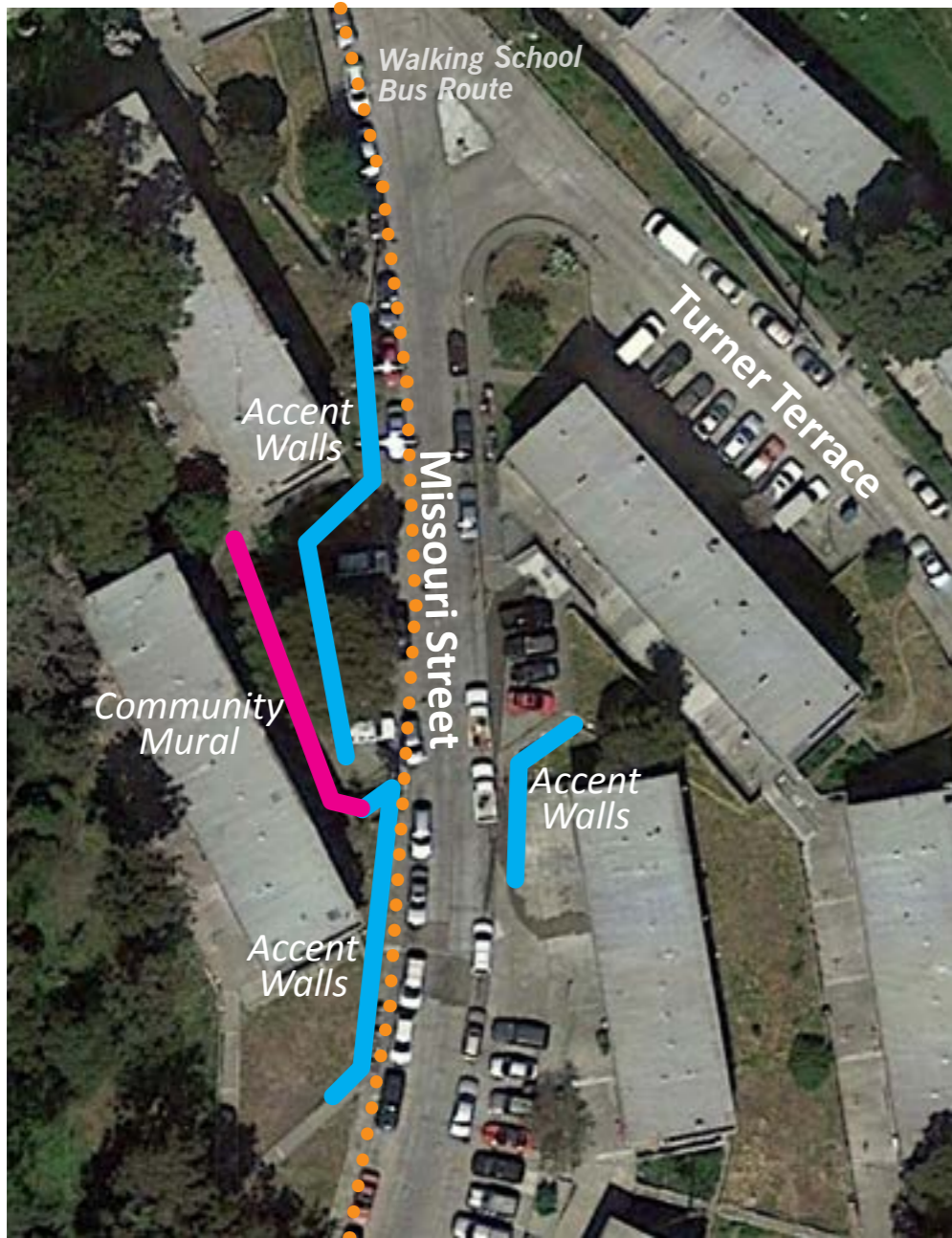
A photograph of two young girls sitting at a table, focused on drawing a mural. The girl on the left is holding a white marker and drawing a circular shape. The girl on the right is also drawing. They are both wearing light-colored shirts. The background is a blurred room with shelves. A semi-transparent blue overlay covers the entire image.

4

COMMUNITY MURAL



# MURAL LOCATION



# YOUTH MURAL DESIGN WORKSHOPS



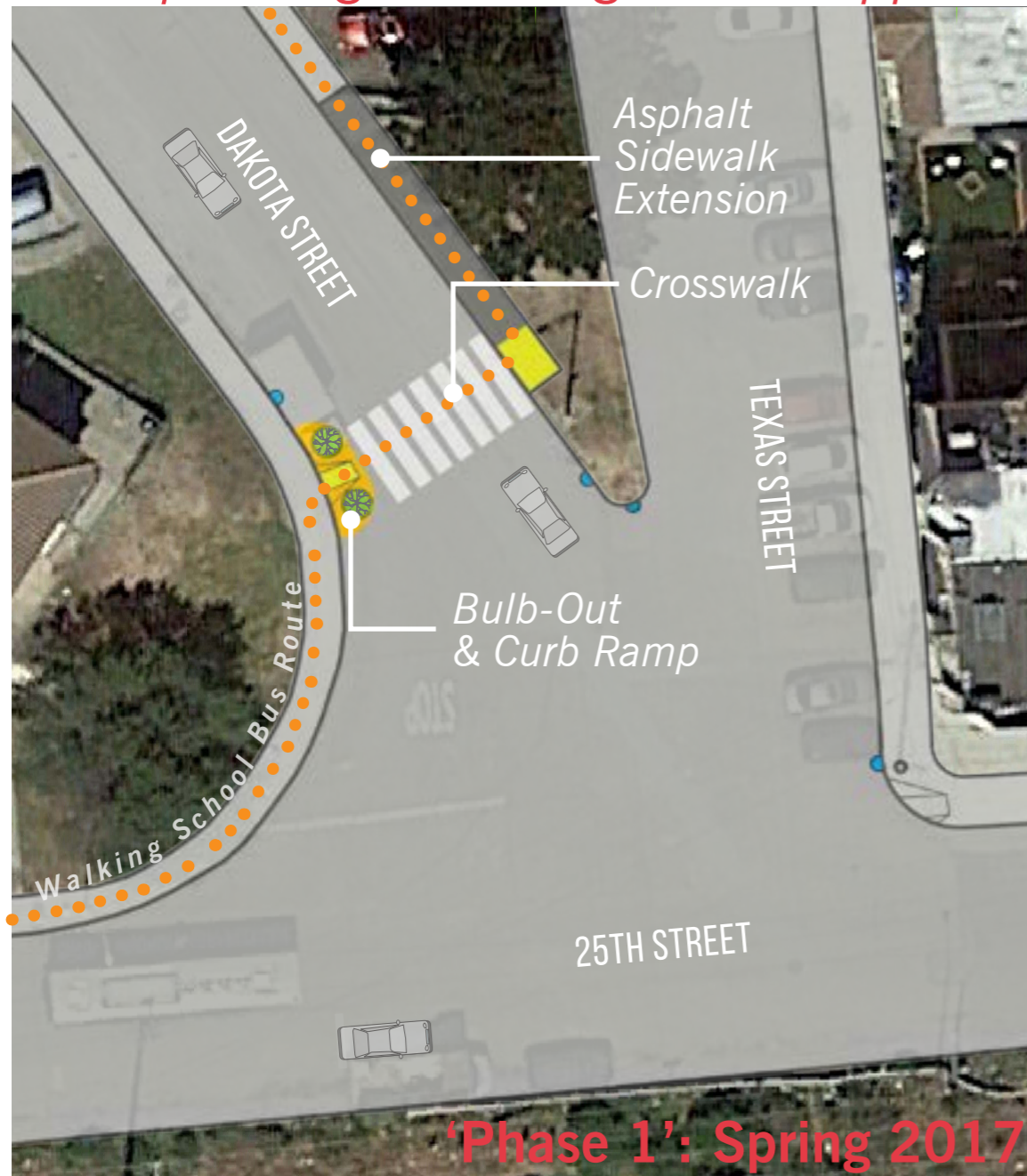


**THANK YOU!**

# INTERSECTION SAFETY ENHANCEMENTS

25TH & DAKOTA/TEXAS

*Concept Design Awaiting SFMTA Approval*



*Rebuild Potrero  
DRAFT CONCEPT--IN DEVELOPMENT*

