

Autonomous Shuttle Pilot Study

TIMMA Committee



TREASURE ISLAND
MOBILITY MANAGEMENT AGENCY

Agenda Item # 3

July 21, 2020

Intra-Island Shuttle System

Treasure Island Transportation Implementation Plan (June 2011)

- Amenity for residents, employees, and visitors
- Easy circulation around islands
- First-mile/last-mile connection from Transit Hub
- Connects to open spaces, retail commercial zones, and residential neighborhoods

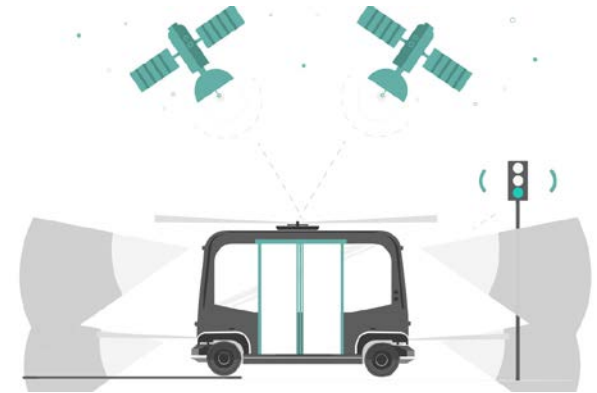


Emerging Technology/ FHWA Grant

Recent advances in Autonomous Technology for Self-Driving Cars

Potential to improve safety by reducing crashes caused by human error or distracted drivers

Advanced Transportation Congestion and Management Technologies Deployment ATCMTD grant



Planning

Project team is developing FHWA system engineering documents

Evaluating project goals and objectives

Identifying shuttle routes, stops, and operational requirements

Examining potential vehicles and capabilities for 3-month deployment



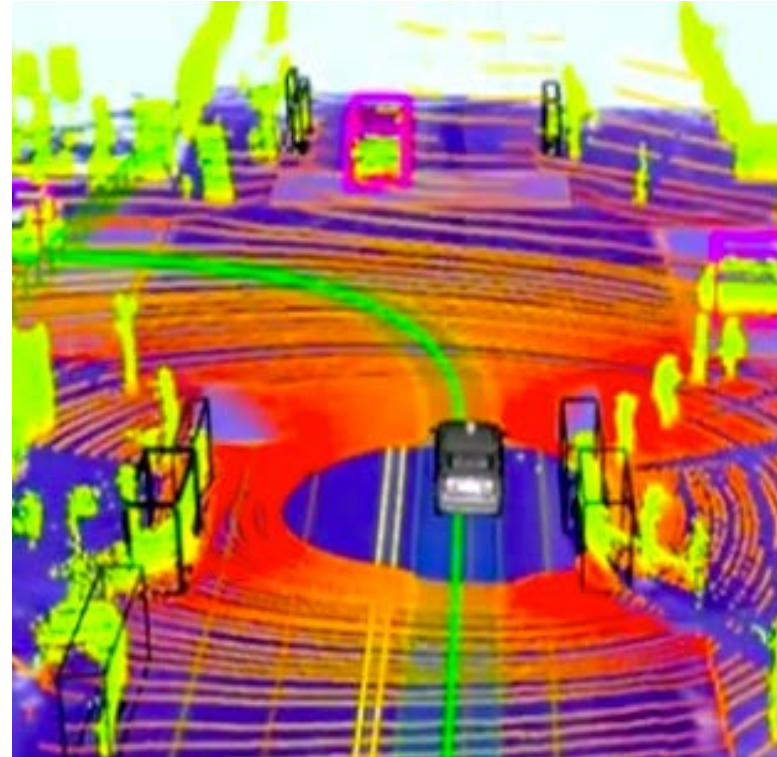
Federal and State Regulations

Federal Motor Vehicle Safety Standards

National Highway Transportation Safety Administration - route approval

California Department of Motor Vehicles - testing on public streets

California Public Utilities Commission (CPUC) - carrying passengers



Next Steps



FHWA system engineering documents approval

RFI - late 2020

RFP - early 2021 for AV Shuttle 3-month Lease

TIMMA Board Approval - Spring 2021

AV Shuttle Testing and Deployment - late 2021

Thank you.

sfcta.org/treasure-island



TREASURE ISLAND
MOBILITY MANAGEMENT AGENCY