

**JANE WARNER PLAZA  
VISIONING EFFORT  
SFCTA BOARD MEETING  
JULY 9, 2024 - Item 11**



**SFMTA**



**San Francisco  
County Transportation  
Authority**

**JANE WARNER PLAZA**  
CONCEPT VISION PLAN

# PROJECT OVERVIEW

## CCSF Project Team

**Project Lead: SFPW, Bureau of Landscape Architecture**

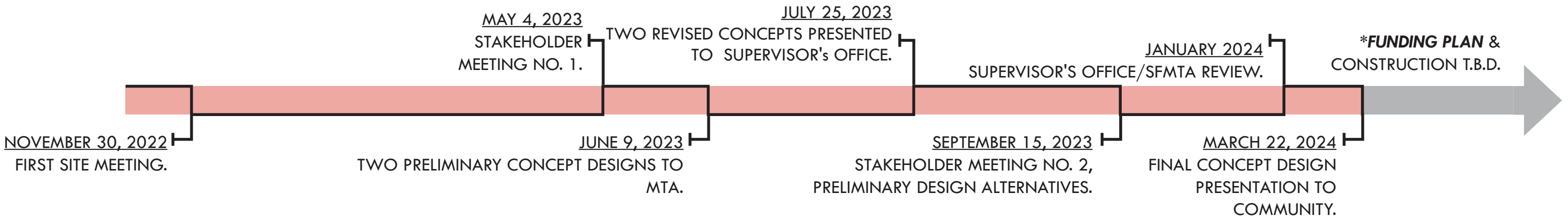
**SFMTA, Transit Operations + Engineering/Planning**

**SFCTA**

**District 8 Supervisor's Office**

**-This project was funded through the San Francisco County Transportation Authority's Neighborhood Transportation Program at the request of Commissioner Rafael Mandelman**

## Project Schedule



San Francisco  
County Transportation  
Authority

**JANE WARNER PLAZA**  
CONCEPT VISION PLAN

# PROJECT DEFINITION/GOALS: MAY 2023 SITE MEETING

## Programming

- Celebrate the leadership and community activism of Jane Warner.
- A flexible place for celebrations, for protest, for grieving.
- Focal entry feature to Upper Market.

## Environment

- Provide relief from extremes of hot and cold weather.
- More greenery!

## Circulation

- Keep existing traffic patterns.
- Pedestrian safety.
- Need to manage large crowds at large events.
- Streetcar is closed 3 times/year. Other events occur while streetcar running.
- Bike access: keep permeable for bike connection to 17th street to east.

## Site Furnishings

- More seating needed. Movable tables and chairs provide flexibility.
- Physical separation at streetcar tracks especially for small group events.

## Place Making

- Unify with Harvey Milk Plaza so it feels like one continuous design.
- Graphics or art on the ground.
- Representation of underrepresented people of the LGBTQIA+ community.

## Materials

- Durable materials.
- Repeat paving materials between Harvey Milk Plaza and Jane Warner Plaza.

## MTA

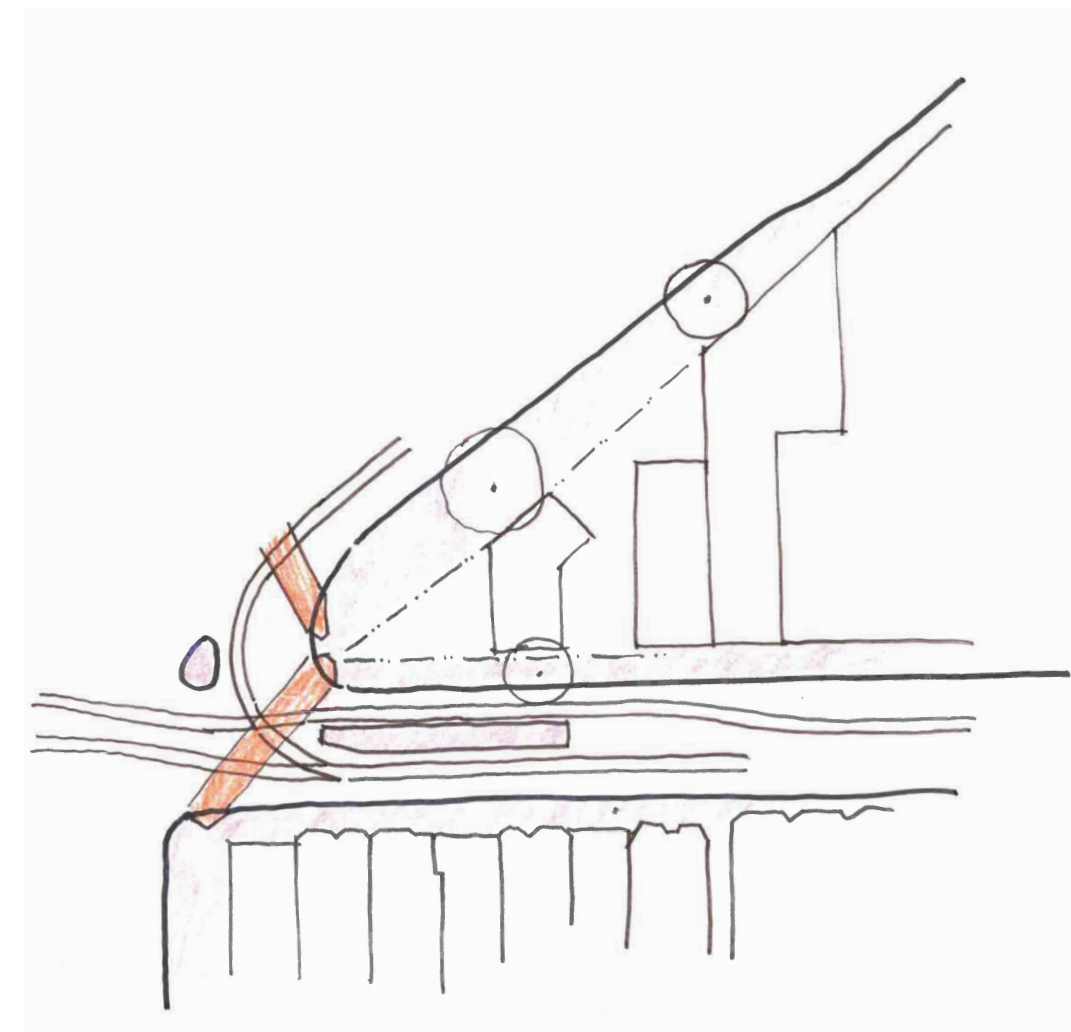
- Emergency tracks may be concealed with removable covers.
- MTA needs maintenance access to OH wires and clearance around tracks.



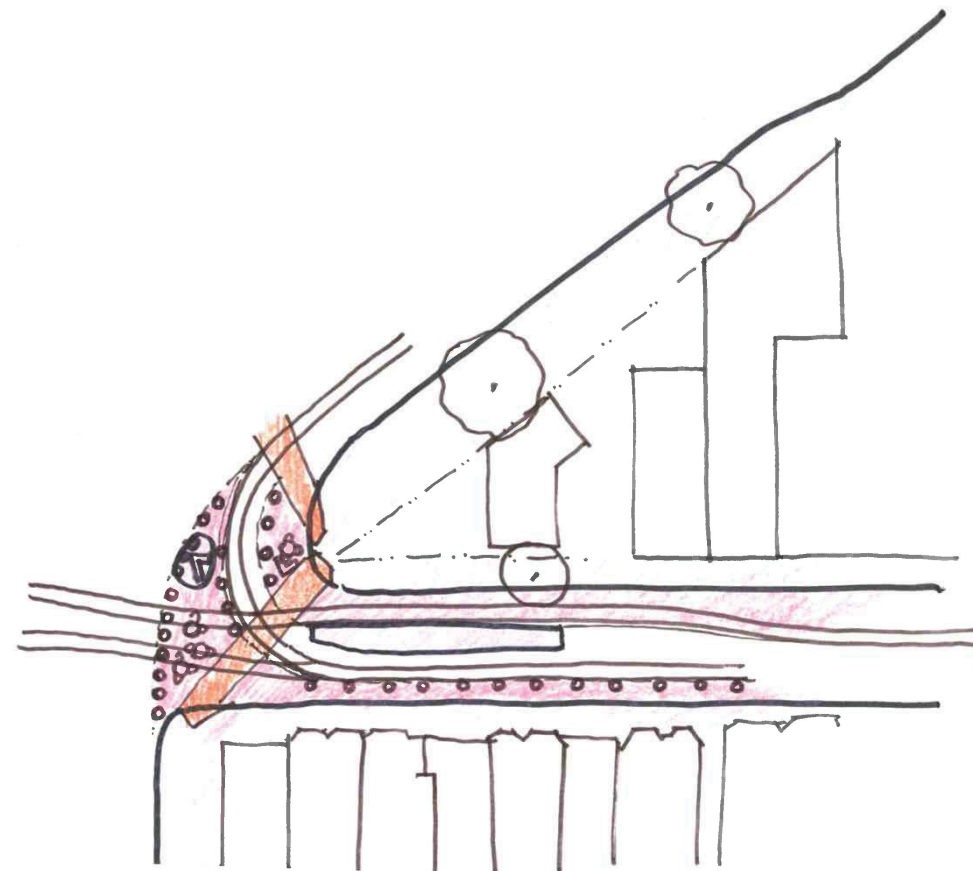
San Francisco  
County Transportation  
Authority

**JANE WARNER PLAZA**  
CONCEPT VISION PLAN

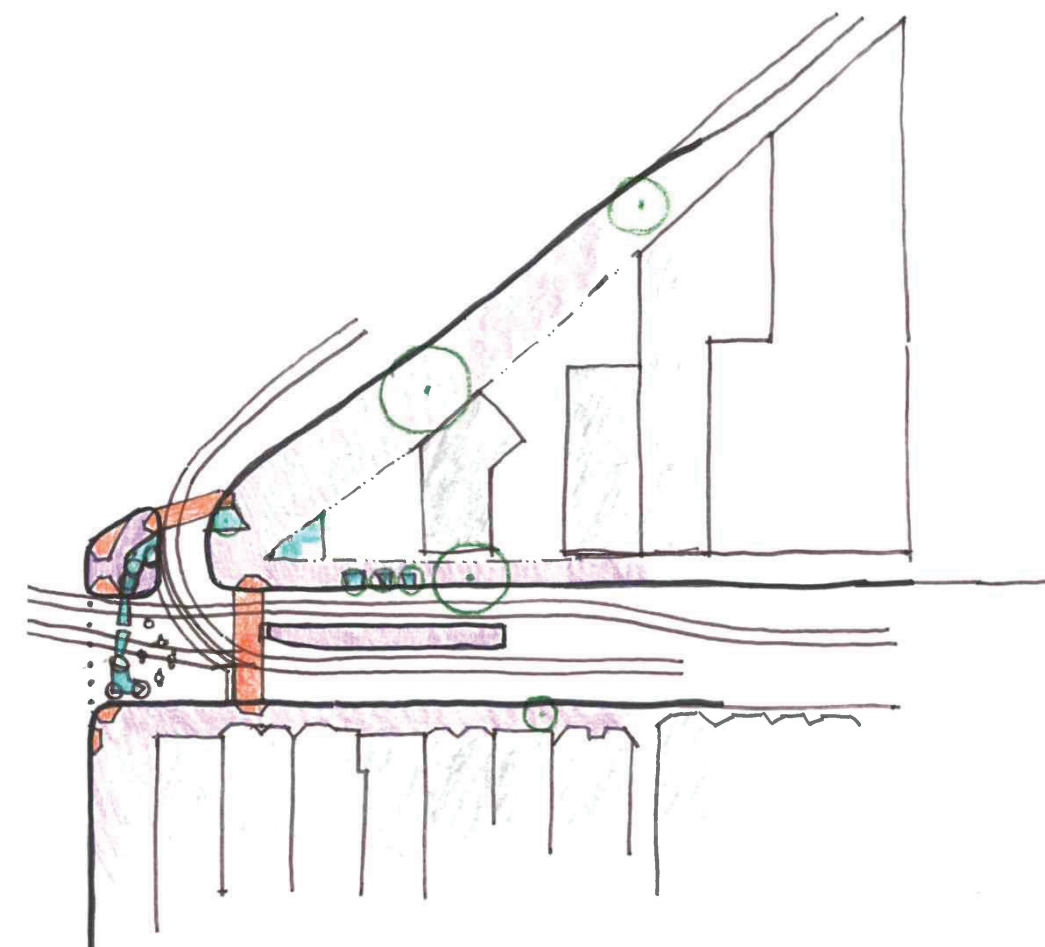
# EVOLUTION OF JANE WARNER PLAZA



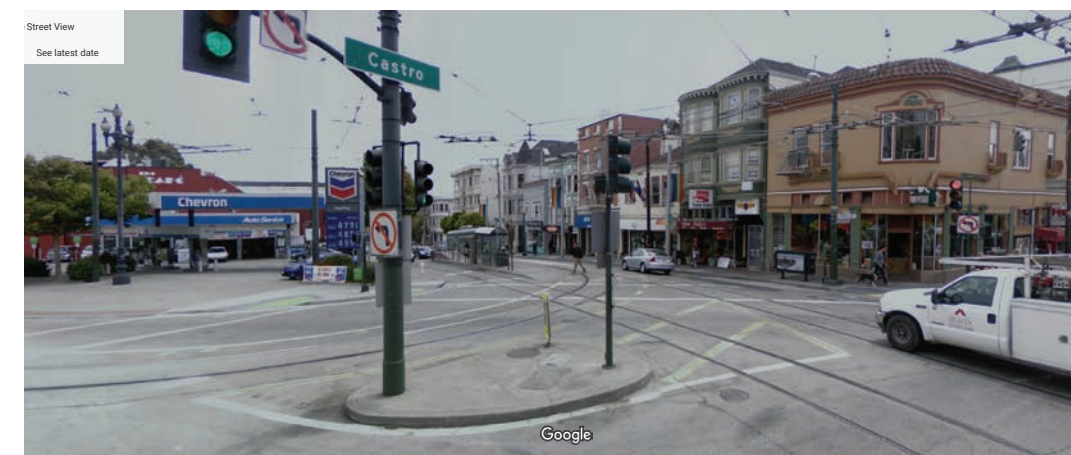
BEFORE JANE WARNER PLAZA, 2008



TACTICAL URBANISM, 2009



JANE WARNER PLAZA TODAY



San Francisco  
County Transportation  
Authority

**JANE WARNER PLAZA**  
CONCEPT VISION PLAN



RIGHT LANE  
MUST  
TURN RIGHT

EXCEPT  
MOTORCYCLES



ON RED

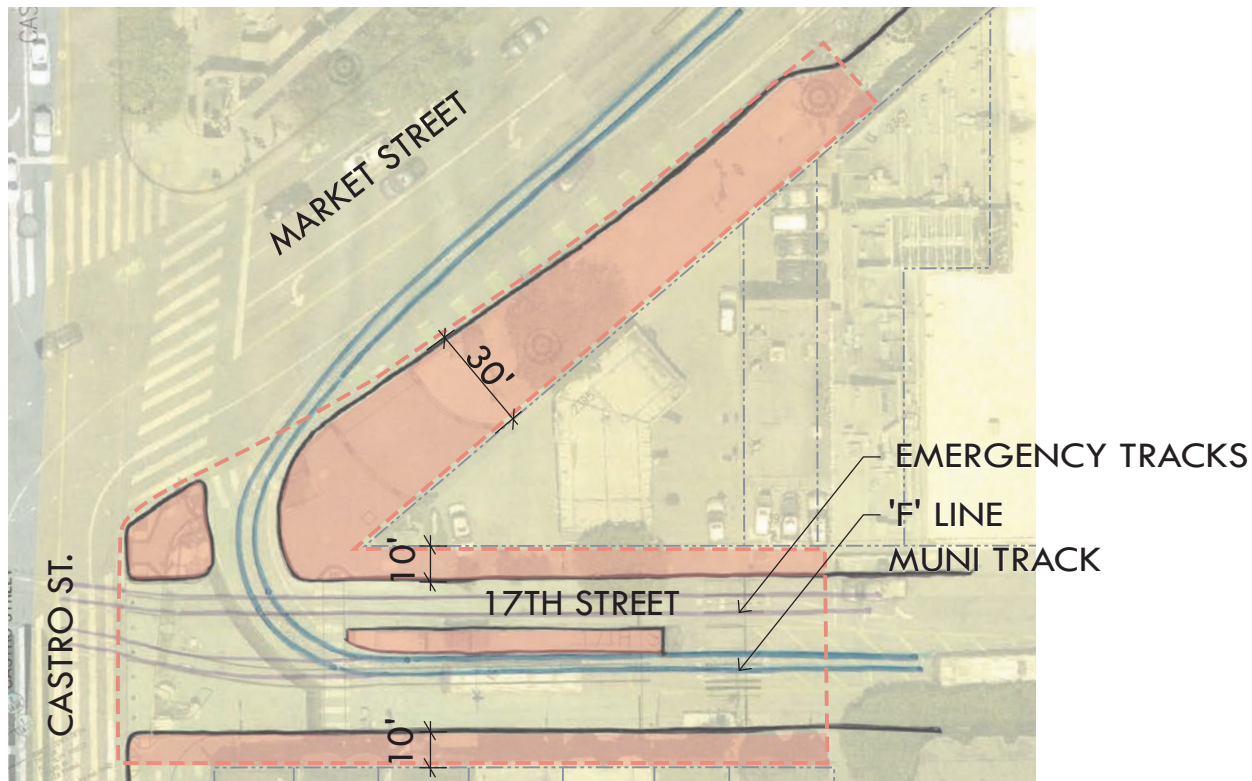
THE SEED  
The sculpture, which grew from the ground, was created by artist...  
Created by...  
Sculpture by...  
The SEED

17TH ST

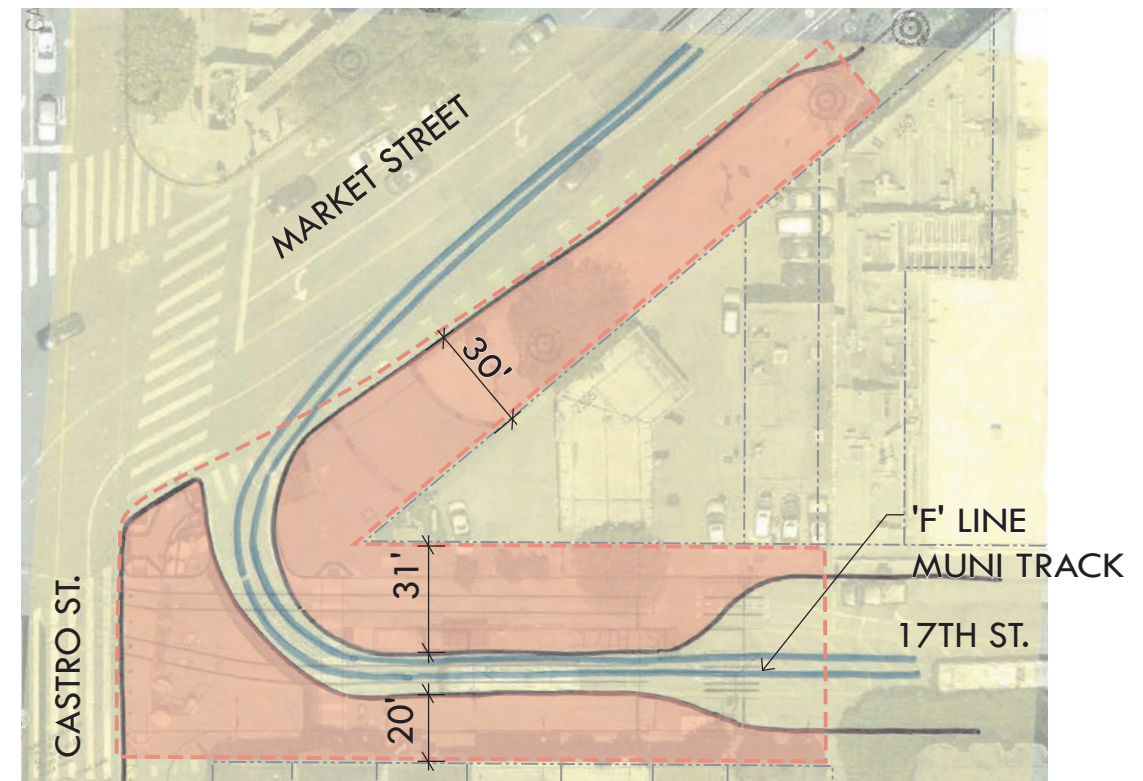
Svcs #415 431.2 358

Jane

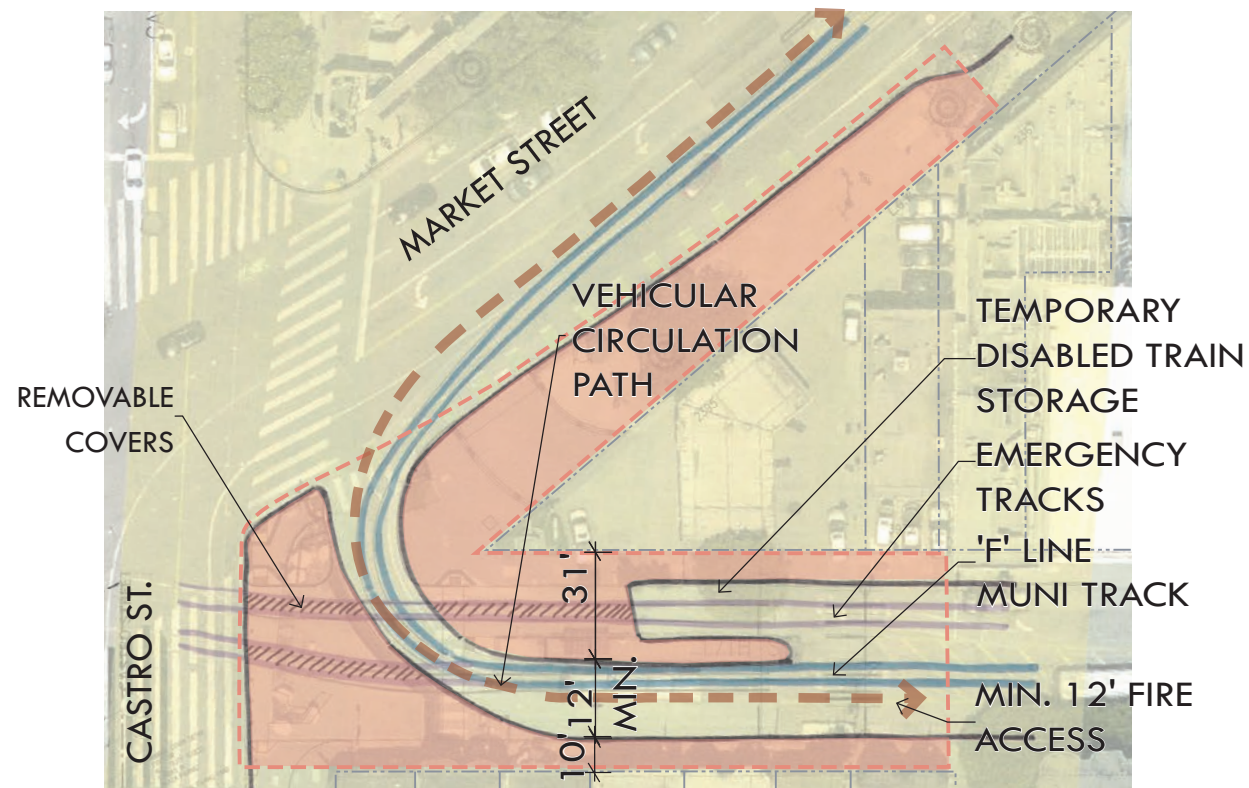
# CURB ALIGNMENT OPTIONS



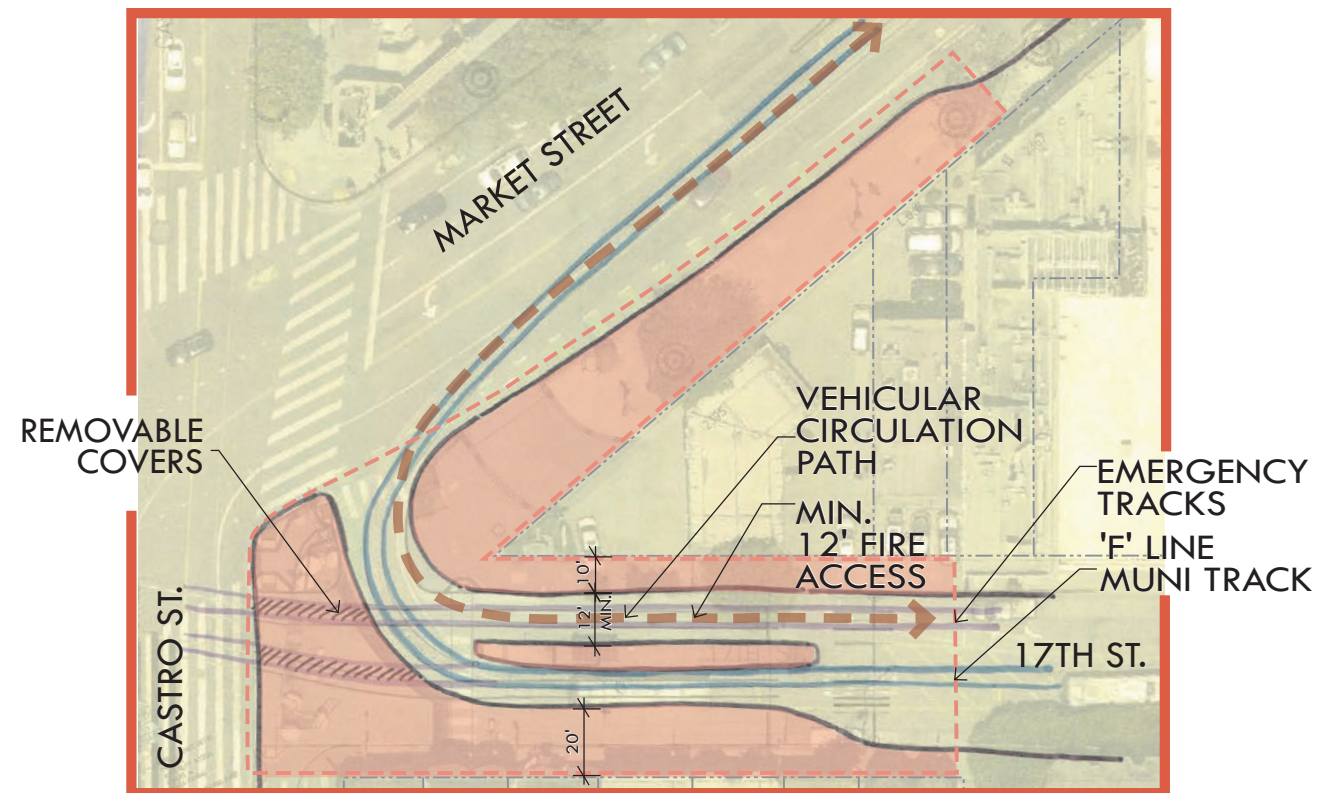
1.) EXISTING CURBS 9,600 S.F.



2.) PRELIMINARY CURB PROPOSAL 15,300 S.F.



3.) ALTERNATIVE 1: NORTH PLAZA CONNECTION 13,182 S.F.



4.) ALTERNATIVE 2: SOUTH BULB-OUT (PREFERRED) 13,070 S.F.



San Francisco  
County Transportation  
Authority

**JANE WARNER PLAZA**  
CONCEPT VISION PLAN

# CONCEPTUAL DESIGN OPTIONS

## LOVE IS ACTION



## THE GREEN EMBRACE



SFMTA



San Francisco  
County Transportation  
Authority

**JANE WARNER PLAZA**  
CONCEPT VISION PLAN

# STAKEHOLDER FEEDBACK

## Input Summary

- Prefer green edges
- Sculpture should be prioritized
- "Green Embrace" with South Bulb-Out favorable
- Likes greenery at edges, consider social concerns
- Open plan idea of "Love is Action" lacks safety
- Hybrid between both alternatives wanted.
- Edge condition at Castro Street is preferred from "Green Embrace."
- Diverse representation
- Tie into Harvey Milk narrative, celebrate women
- Maintenance Considerations
- Involve adjacent businesses
- Widened sidewalk is desired



SFMTA



San Francisco  
County Transportation  
Authority

**JANE WARNER PLAZA**  
CONCEPT VISION PLAN



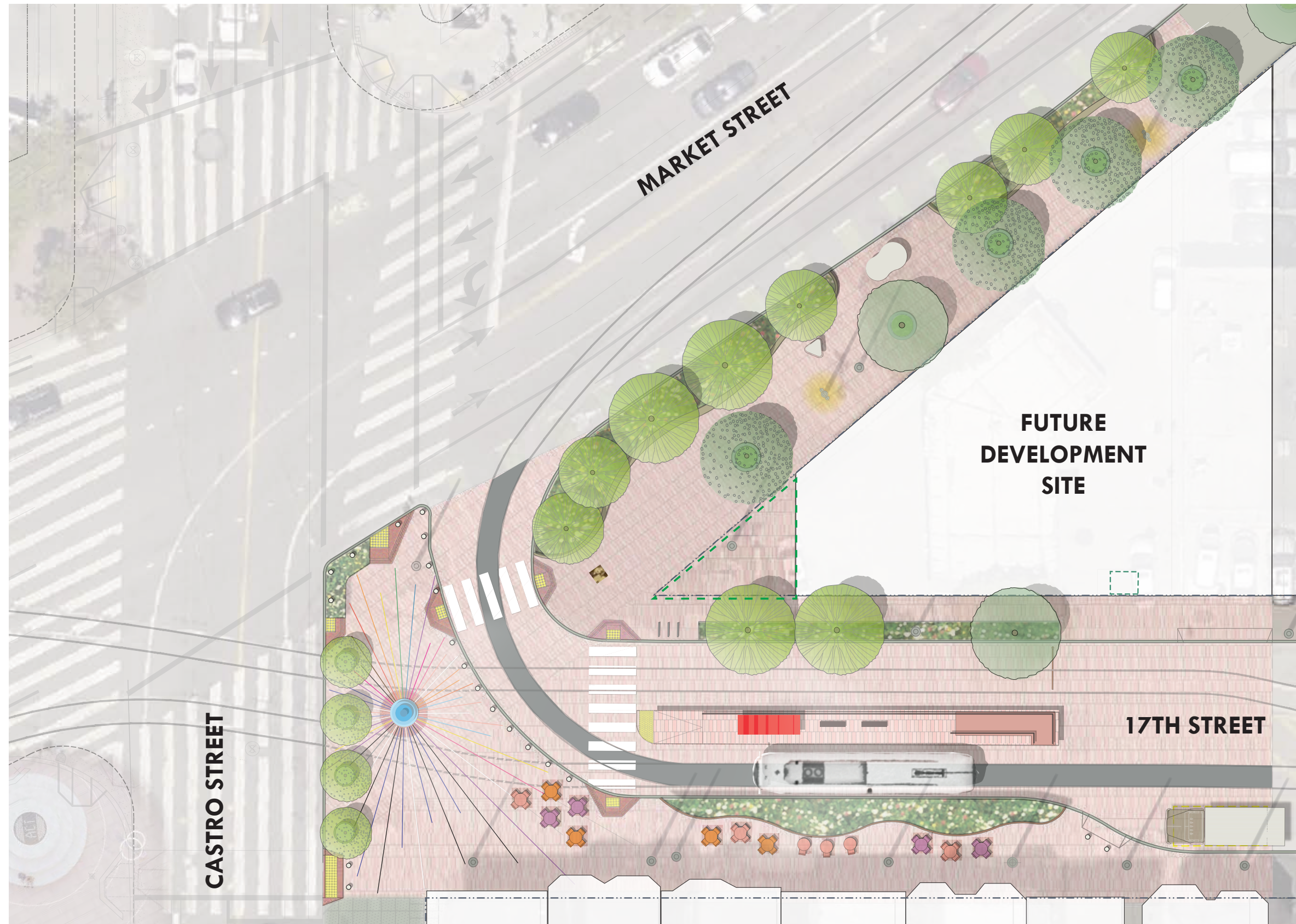
# PREFERRED CONCEPT



San Francisco  
County Transportation  
Authority

**JANE WARNER PLAZA**  
CONCEPT VISION PLAN

# PREFERRED CONCEPT : GREEN EMBRACE



## LEGEND

-  GRANITE PAVERS
-  CONCRETE PAVING AT TRACKS
-  MULTI-COLORED LINES OF VARIOUS LGBTQ FLAGS
-  RAISED PLANTER W/ TREE
-  RAISED STORMWATER PLANTER
-  MOVABLE FURNISHINGS
-  MUNI SHELTER
-  BOLLARD
-  EXISTING TREE
-  MTA OCS POLE



San Francisco  
County Transportation  
Authority

**JANE WARNER PLAZA**  
CONCEPT VISION PLAN

# CONCEPT IMAGERY : THE GREEN EMBRACE



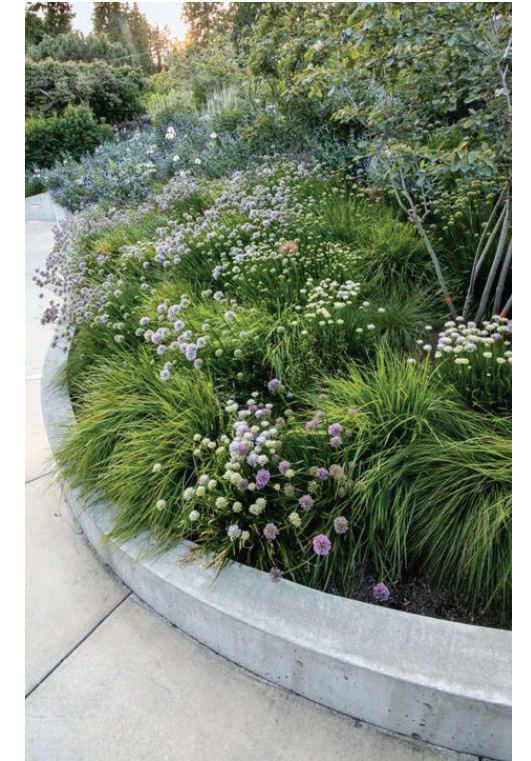
RADIATING METAL INSET PAVING DETAIL



RADIATING TEXT



RAISED PLANTER W/ BUILT-IN SEATING AT BULB-OUT EDGE



PLANTER WITH CURVED EDGES



ANODIZED METAL INSET IN FLAG COLORS



MOVABLE FURNISHINGS AT 17TH STREET BUSINESSES



RADIANT RED GRANITE PAVERS



CONTEMPORARY ILLUMINATED SCULPTURE "BEACON"



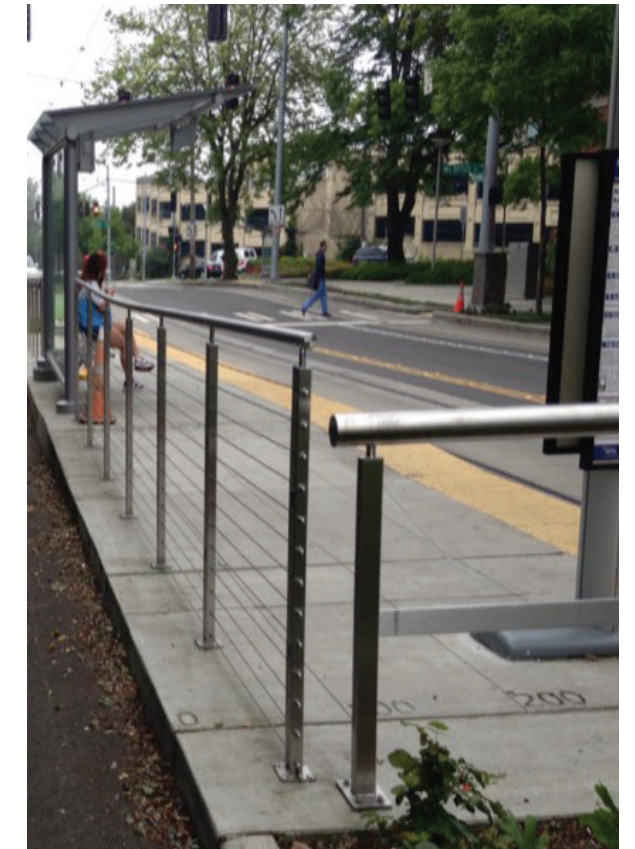
MOVABLE POTTED TREES AT CASTRO STREET EDGE



UPGRADED PUBLIC TOILET



BOLLARD WITH CHAIN



UPGRADED BOARDING PLATFORM



SFMTA



San Francisco  
County Transportation  
Authority

**JANE WARNER PLAZA**  
CONCEPT VISION PLAN

Jane Warner Plaza



Jane Warner Plaza

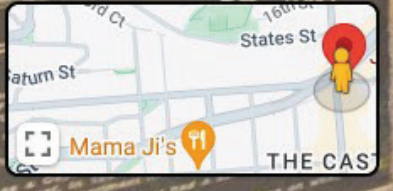
San Francisco, California



Google Street View

Aug 2021

See more dates



Google





# OPEN DISCUSSION

## NEXT STEPS

- IDENTIFY PROJECT FUNDING
- RE-ENGAGE PROJECT STAKEHOLDERS AND INVOLVE COMMUNITY AT LARGE TO FURTHER CONCEPT DESIGN
- FUND DESIGN/ENGINEERING FOR PROJECT
- CONTINUE COORDINATION WITH HARVEY MILK PROJECT TEAM

