

Item 7 Enclosure  
Board  
July 9, 2024

**Prop L Allocation Request Forms**  
**July Board Action**  
**Table of Contents**

No.	Fund Source	Project Sponsor <sup>1</sup>	Expenditure Plan Line Item/ Category Description	Project Name	Phase	Funds Requested	Page No.
1	Prop L	SFMTA	Paratransit	Paratransit	Construction	\$ 13,506,000	3
2	Prop L	SFMTA	Safer and Complete Streets	Safe Streets Evaluation Program	Planning	\$ 450,000	15
3	Prop L	SFPW	Tree Planting	Tree Planting and Establishment	Construction	\$ 1,050,000	31
5	Prop L	SFCTA	Neighborhood Transportation Program	Neighborhood Transportation Program Coordination	Planning	\$ 100,000	55
6	Prop L	SFCTA	Citywide / Modal Planning	San Francisco Transportation Plan 2050+	Planning	\$ 700,000	79
<b>Total Requested</b>						<b>\$ 15,806,000</b>	

<sup>1</sup> Acronym: SFCTA (San Francisco County Transportation Authority), SFMTA (San Francisco Municipal Transportation Agency), and SFPW (San Francisco Public Works)

[ this page intentionally left blank ]

# San Francisco County Transportation Authority Allocation Request Form

<b>FY of Allocation Action:</b>	FY2024/25
<b>Project Name:</b>	Paratransit
<b>Primary Sponsor:</b>	San Francisco Municipal Transportation Agency

## EXPENDITURE PLAN INFORMATION

<b>PROP L Expenditure Plans</b>	Paratransit
<b>Current PROP L Request:</b>	\$13,506,000
<b>Supervisory District</b>	Citywide

## REQUEST

### Brief Project Description

The SFMTA provides paratransit services to persons with disabilities, in compliance with the Americans with Disabilities Act. Prop L funds will be used for the paratransit broker contract in FY24/25 for services including taxi, pre-scheduled van, and inter-county trips, group van trips to senior centers, the Shop-a-Round and Van Gogh shuttle programs, the Wheelchair Accessible Ramp Taxi Incentive program, and Essential Trip Card program. These programs are critically important to persons with disabilities and the elderly who are unable to fully utilize other forms public transportation.

### Detailed Scope, Project Benefits and Community Outreach

The SFMTA requests \$13,506,000 in Prop L funds to support the estimated \$34.7 million cost for FY24/25 for SFMTA's contract with the broker that administers the Paratransit program. This is an annual request for paratransit operations.

The SFMTA provides paratransit services to persons with disabilities, in compliance with the Americans with Disabilities Act (ADA). Paratransit services are provided to persons with disabilities who are unable to independently ride bus or light rail service some or all the time and are certified eligible according to federal criteria. Paratransit in San Francisco is administered by a broker that delivers service through a diverse set of providers and resources, including 100 city-owned vehicles that are less than 5 years old, private taxis and group vans associated with community-based organizations throughout the city. On June 14, 2016, the Board of Supervisors approved a contract with Transdev to provide paratransit broker services through June 30, 2021, with an option for a five-year extension, and in an amount not to exceed \$142,902,104. On May 14, 2021, the Board of Supervisors approved exercising the option for the five-year extension recommended by the SFMTA Board and increased the not to exceed amount to \$308,271,023.

More details are provided in the "Detailed Scope of Work - Paratransit" attachment.

### Project Location

# 4

Citywide

<b>Is this project in an Equity Priority Community?</b>	Yes
<b>Does this project benefit disadvantaged populations?</b>	Yes

## Project Phase(s)

Operations (OP)

## 5YPP/STRATEGIC PLAN INFORMATION

<b>Type of Project in the Prop L 5YPP/Prop AA Strategic Plan?</b>	Named Project
<b>Is requested amount greater than the amount programmed in the relevant 5YPP or Strategic Plan?</b>	Less than or Equal to Programmed Amount
<b>PROP L Amount</b>	\$13,506,000.00

# San Francisco County Transportation Authority Allocation Request Form

<b>FY of Allocation Action:</b>	FY2024/25
<b>Project Name:</b>	Paratransit
<b>Primary Sponsor:</b>	San Francisco Municipal Transportation Agency

## ENVIRONMENTAL CLEARANCE

<b>Environmental Type:</b>	N/A
----------------------------	-----

## PROJECT DELIVERY MILESTONES

Phase	Start		End	
	Quarter	Calendar Year	Quarter	Calendar Year
Planning/Conceptual Engineering (PLAN)				
Environmental Studies (PA&ED)				
Right of Way				
Design Engineering (PS&E)				
Advertise Construction				
Start Construction (e.g. Award Contract)				
Operations (OP)	Jul-Aug-Sep	2024	Apr-May-Jun	2025
Open for Use				
Project Completion (means last eligible expenditure)			Apr-May-Jun	2025

## SCHEDULE DETAILS

# San Francisco County Transportation Authority Allocation Request Form

<b>FY of Allocation Action:</b>	FY2024/25
<b>Project Name:</b>	Paratransit
<b>Primary Sponsor:</b>	San Francisco Municipal Transportation Agency

## FUNDING PLAN - FOR CURRENT REQUEST

Fund Source	Planned	Programmed	Allocated	Project Total
EP-214: Paratransit	\$0	\$13,506,000	\$0	\$13,506,000
BART ADA Contribution	\$0	\$0	\$2,198,000	\$2,198,000
Department of Disabled and Aging Services	\$0	\$0	\$550,000	\$550,000
Federal Transit Agency 5307	\$0	\$0	\$5,752,712	\$5,752,712
SFMTA Operating Budget	\$0	\$0	\$9,436,445	\$9,436,445
STA Block Grant	\$0	\$0	\$3,300,000	\$3,300,000
<b>Phases In Current Request Total:</b>	<b>\$0</b>	<b>\$13,506,000</b>	<b>\$21,237,157</b>	<b>\$34,743,157</b>

## COST SUMMARY

Phase	Total Cost	PROP L - Current Request	Source of Cost Estimate
Planning/Conceptual Engineering	\$0		
Environmental Studies	\$0		
Right of Way	\$0		
Design Engineering	\$0		
Construction	\$0		
Operations	\$34,743,263	\$13,506,000	Paratransit Broker Contract
Total:	\$34,743,263	\$13,506,000	

<b>% Complete of Design:</b>	N/A
<b>As of Date:</b>	N/A
<b>Expected Useful Life:</b>	N/A

Paratransit Draft Funding & Budget Changes - FY2024/25

**Funding Plan - by sub-project**

	Approved		Proposed		Increase (Decrease)	% Change
	FY2023/24 Budget	% of Contract Budget	FY2024/25 Budget	% of Contract Budget		
<b>Revenues/Recovery</b>						
<b>Paratransit</b>						
Federal Transit Agency 5307	\$ 5,585,157	16.5%	\$ 5,752,712	16.6%	\$ 167,555	3%
Prop K/L*	\$ 14,039,647	41.4%	\$ 13,506,000	38.9%	\$ (533,647)	-4%
BART ADA Contribution	\$ 2,134,502	6.3%	\$ 2,198,000	6.3%	\$ 63,498	3%
State Transit Assistance (STA) - Paratransit **	\$ 3,300,000	9.7%	\$ 3,300,000	9.5%	\$ -	0%
SFMTA Operating Budget	\$ 8,333,720	24.6%	\$ 9,436,445	27.2%	\$ 1,102,725	13%
Department of Disabled and Aging Recovery	\$ 500,000	1.5%	\$ 550,000	1.6%	\$ 50,000	10%
<b>Paratransit subtotal</b>	<b>\$ 33,893,026</b>	<b>100.0%</b>	<b>\$ 34,743,157</b>	<b>100.0%</b>	<b>\$ 850,131</b>	

**Major Line Item Budget**

	Approved		Proposed		Increase (Decrease)
	FY2023/24 Budget	% of Contract Budget	FY2024/25 Budget	% of Contract Budget	
<b>Apportionment</b>					
Paratransit and Labor Cost	\$ 33,893,026	100%	\$ 34,743,157	100%	\$ 850,131
Muni Paratransit Staff ***	\$ 410,363	1%	\$ 422,674	1%	\$ 12,311
<b>Total</b>	<b>\$ 34,303,389</b>	<b>101%</b>	<b>\$ 35,165,831</b>	<b>101%</b>	<b>\$ 862,442</b>

\*FY 2024/25 is the amount available for allocation in the Prop L Strategic Plan Baseline.

\*\*FY 2024/25 STA revenues are projections and annual amounts may be higher or lower when confirmed at the end of the fiscal year following the State's reconciliation of actual revenues generated. In the event of a shortfall in SF's STA funds for FY 2024/25, the SFMTA will work with Transportation Authority staff to adjust the Paratransit funding plan accordingly.

\*\*\* Not funded by Prop K or Prop L

# San Francisco County Transportation Authority Allocation Request Form

<b>FY of Allocation Action:</b>	FY2024/25
<b>Project Name:</b>	Paratransit
<b>Primary Sponsor:</b>	San Francisco Municipal Transportation Agency

**SFCTA RECOMMENDATION**

<b>Resolution Number:</b>		<b>Resolution Date:</b>	
<b>Total PROP L Requested:</b>	\$13,506,000	<b>Total PROP L Recommended</b>	\$13,506,000

<b>SGA Project Number:</b>		<b>Name:</b>	Paratransit
<b>Sponsor:</b>	San Francisco Municipal Transportation Agency	<b>Expiration Date:</b>	12/31/2025
<b>Phase:</b>	Operations	<b>Fundshare:</b>	39.0%

**Cash Flow Distribution Schedule by Fiscal Year**

Fund Source	FY2024/25	FY2025/26	Total
PROP L EP-214	\$10,130,000	\$3,376,000	\$13,506,000

**Deliverables**

1. Quarterly Progress Reports shall provide a service report of performance by mode, including the number of trips, number of complaints, on-time percentage, number of Paratransit program ramp taxi trips originating in Equity Priority Communities, number Paratransit wheelchair passenger trips made on taxi vehicles funded by the Ramp Taxi Incentives program, and the number of ramp taxi vehicle owners receiving the subsidy each month, in addition to the standard requirements described in the Standard Grant Agreement.

**Special Conditions**

1. Prop L funds allocated to this project are for eligible expenses incurred in the fiscal year for which the allocation was made (ending 6/30/25). After the deadline for submittal of final reimbursement requests or estimated expenditure accruals (estimated mid-July 2025), any remaining unclaimed amounts may be deobligated.

**Notes**

1. Prop L funds are for reimbursement of Paratransit contract expenses only.

Metric	PROP AA	TNC TAX	PROP L
Actual Leveraging - Current Request	No PROP AA	No TNC TAX	61.13%
Actual Leveraging - This Project	No PROP AA	No TNC TAX	61.13%



# San Francisco County Transportation Authority Allocation Request Form

<b>FY of Allocation Action:</b>	FY2024/25
<b>Project Name:</b>	Paratransit
<b>Primary Sponsor:</b>	San Francisco Municipal Transportation Agency

## EXPENDITURE PLAN SUMMARY

<b>Current PROP L Request:</b>	\$13,506,000
--------------------------------	--------------

- 1) The requested sales tax and/or vehicle registration fee revenues will be used to supplement and under no circumstance replace existing local revenues used for transportation purposes.

Initials of sponsor staff member verifying the above statement:

ML

## CONTACT INFORMATION

	Project Manager	Grants Manager
<b>Name:</b>	Jonathan Cheng	Joel C Goldberg
<b>Title:</b>	Paratransit Planner	Grants Procurement Manager
<b>Phone:</b>	(415) 701-4597	555-5555
<b>Email:</b>	jonathan.cheng@sfmta.com	joel.goldberg@sfmta.com

## Paratransit Detailed Scope

### Request

The SFMTA requests \$13,506,000 in Proposition L (Prop L) funds to support the estimated \$34.7 million cost for Fiscal Year 2024/25 of SFMTA's contract with the broker that administers the Paratransit program. This is an annual request for paratransit operations.

### Background

The SFMTA provides paratransit services to persons with disabilities, in compliance with the Americans with Disabilities Act (ADA). Paratransit services are provided to persons with disabilities who are unable to independently ride bus or light rail service some or all the time and are certified eligible according to federal criteria. Paratransit in San Francisco is administered by a broker that delivers service through a diverse set of providers and resources, including 100 city-owned vehicles that are less than 5 years old, private taxis and group vans associated with community-based organizations throughout the city. On June 14, 2016, the Board of Supervisors approved a contract with Transdev to provide paratransit broker services through June 30, 2021, with an option for a five-year extension, and in an amount not to exceed \$142,902,104. On May 14, 2021, the Board of Supervisors approved exercising the option for the five-year extension recommended by the SFMTA Board and increased the not to exceed amount to \$308,271,023.

### **Detailed Description of Services**

- **Paratransit Services:**

The paratransit broker services include determination of client eligibility, customer service, overseeing and monitoring the operation of the taxi debit card system, procuring, subcontracting, and oversight of van and taxi services, and reporting and record keeping. Transdev itself operates the SF Access service and a portion of the Group Van services. All other transportation services for which the Broker is responsible are procured via contracts with other providers. In addition, the Broker is responsible for the continued development and implementation of the mobility management program, including activities to make it easier for San Francisco's disabled and senior residents to navigate the transportation services available to them, including the Shop-a-Round and Van Gogh shuttles and Ramp Taxi Incentives programs. The broker also administers the Essential Trip Card (ETC) program, which was initiated in response to the COVID-19 pandemic and reduced Muni service and will continue through FY23/24. Approximately 475,000 paratransit trips are projected to be provided to 11,000 registered ADA eligible consumers while about 85,000 ETC taxi trips are expected to be provided to about 7,000 seniors and persons with disabilities in FY24/25.

Specific paratransit services to be funded by Prop L are described below:

- 1) Taxi – Provides individual paratransit taxi trips to ADA-eligible paratransit users using both sedans and wheelchair accessible ramped taxis.
- 2) SF Access – Provides pre-scheduled, shared-ride door-to-door van service in City-owned vehicles for ADA eligible paratransit users.
- 3) Intercounty – Pre-scheduled paratransit trips provided to paratransit users to or from Muni's service area in San Francisco, to or from destinations in Alameda County, Marin, and Contra Costa County. These trips are provided by the East Bay Paratransit Consortium and Marin Access.

## Paratransit Detailed Scope

- 4) Group Van – Provides pre-scheduled group trips for ADA-eligible paratransit users who are going to a common destination such as an Adult Day Health Centers, developmentally disabled work sites, senior nutrition programs etc.
- 5) Department of Aging and Adult Services Group Van – Provides pre-scheduled group van services to senior centers funded by the Department of Disabled and Aging Services.
- 6) Essential Trip Card Program – Provides a limited taxi service to seniors and people with disabilities to get to and from essential services in San Francisco
- 7) Shop-a-Round/Van Gogh – Provides transportation services for seniors and people with disabilities to grocery stores or social/recreational activities
- 8) Mobility Management – Provides a one-stop information and referral center, including assistance in trip planning and applying for fare assistance programs, to help seniors and people with disabilities make the best decisions for your travel needs
- 9) Ramp Taxi Incentives – Provides a monthly stipend for eligible ramp taxi drivers who purchase and operate a wheelchair accessible vehicle

### **Service Impacts Due to the COVID-19 Pandemic**

The total number of trips performed for the SF Paratransit program is expected to continue to slightly increase from the previous year to about 70% of pre-pandemic trip figures. SFMTA expects ridership to increase with slight ebbs as individuals continue to evaluate their comfort level in engaging in non-essential activities.

For the SF Access service, ridership is at about 75% of pre-pandemic levels. The majority of trips continue to be for medical purposes or dialysis. SF Paratransit Taxi is approximately at 65% of pre-pandemic service levels to ADA Paratransit clients. However, when ETC taxi trips are included, the number of taxi trips completed are comparable to pre-pandemic trip levels. SFMTA Group Van service gradually resumed service as agencies reopen their centers to in-person activities, operating at 50% of pre-pandemic levels. SFMTA and SF Paratransit continue to regularly communicate with these agencies and develop routes for their clients as schedules normalize.

In addition to the ADA Paratransit service, the Paratransit program operates several non-ADA transportation services as well. Shop-a-Round van and taxi service as well as the Van Gogh service continue to operate as normal. The Shop-a-Round van schedule is being revised in order to accommodate changes in trip patterns.

SFMTA and SF Paratransit also continues to operate the Essential Trip Card Program. This program, which was created to complement the reduced Muni service during the COVID-19 pandemic, is a taxi service available to all seniors and individuals with disabilities who need to complete essential trips. The Mobility Management staff at SF Paratransit has been responsible for administering the ETC program, along with their other outreach and travel training activities. SFMTA is working to transition the ETC program into a permanent program and is developing a plan to require current ETC members to obtain new taxi debit cards with their photo ID in order to align with the other SF Paratransit's taxi programs.

### **Cost Impact of the COVID-19 Pandemic**

The increased projected cost in FY24/25 in the Paratransit contract can be attributed to negotiated wage increases from union agreements for all non-management employees of the SF Access contractor, Transdev as well as meter rate increases and changes to the tipping policy for the taxi service. SFMTA also anticipates continued increases in trip figures as Group Van agencies engage with their clients to

## Paratransit Detailed Scope

resume in-person activities and increased confidence among SF Access and taxi riders to engage in more social and recreational activities.

**San Francisco County Transportation Authority  
Prop L Allocation Request Form**

**Key Paratransit Performance Trends FY 2019-2024**

YTD  
(March 2024)

<b>Paratransit Performance Indicators</b>	<b>FY 2018/19</b>	<b>FY 2019/20</b>	<b>FY 2020/21</b>	<b>FY 2021/22</b>	<b>FY 2022/23</b>	<b>FY 2023/24</b>
Total Passenger Trips Provided	720,807	592,207	387,136	488,085	519,626	406,859
ETC Trips		3,963	63,729	83,939	82,999	66,893
On-time Percentage						
(Group Van & Access Van)	83.07%	90.85%	99.32%	94.64%	93.99%	97.19%
Taxi	96.16%	95.53%	95.80%	92.79%	94.35%	97.45%
Complaints	739	517	217	249	208	151
Cost per Passenger Trip	\$39.01	\$44.87	\$57.56	\$53.17	\$54.79	\$53.07

[ this page intentionally left blank ]

# San Francisco County Transportation Authority Allocation Request Form

<b>FY of Allocation Action:</b>	FY2024/25
<b>Project Name:</b>	Safe Streets Evaluation Program
<b>Primary Sponsor:</b>	San Francisco Municipal Transportation Agency

**EXPENDITURE PLAN INFORMATION**

<b>PROP L Expenditure Plans</b>	Safer and Complete Streets
<b>Current PROP L Request:</b>	\$450,000
<b>Supervisory District</b>	Citywide

**REQUEST**

**Brief Project Description**

The SFMTA's Safe Streets Evaluation Program tracks progress and measures performance for key traffic calming, bicycle, and pedestrian safety projects that support Vision Zero. Funds will be used to support pre-and-post data collection and analysis of various safety projects, including at least 15 quick-builds and two programmatic efforts to reduce speeds, to improve traffic safety. More information and evaluation results for each project are available to the public at [www.sfmta.com/safe-streets-evaluation-program](http://www.sfmta.com/safe-streets-evaluation-program).

**Detailed Scope, Project Benefits and Community Outreach**

See attached Detailed Scope.

**Project Location**

Citywide

<b>Is this project in an Equity Priority Community?</b>	Yes
<b>Does this project benefit disadvantaged populations?</b>	Yes

**Project Phase(s)**

Planning/Conceptual Engineering (PLAN)

**5YPP/STRATEGIC PLAN INFORMATION**

San Francisco County Transportation Authority  
Proposition L Sales Tax Program Allocation Request Form  
**Safe Streets Project Evaluation Program**

## **Background**

The San Francisco Municipal Transportation Agency (SFMTA) requests Prop L funding in the amount of \$450,000 to evaluate projects through the Safe Streets Project Evaluation Program. Initiated in 2017, the SFMTA's Safe Streets Evaluation Program tracks progress and measures performance for key traffic calming, bicycle, and pedestrian safety projects throughout San Francisco that support the Vision Zero initiative to eliminate traffic related fatalities in the city.

With funding from the SFCTA, in May 2019 the SFMTA published the first Safe Street Evaluation Year-End Report, detailing the agency's effectiveness in advancing the city's goals and Vision Zero efforts over the course of 2018. Over the course of the past five years, the program has grown to offer important insights into progress made and lessons learned. The program has proven vital to the Vision Zero Quick Build Program, a policy change that allows for quickly built pedestrian and bicycle safety improvements on the city's High Injury Network and iterative design changes. The Program has also proved invaluable in helping the agency respond to the COVID crisis and making our street design work more equitable and responsive to communities most impacted by the intertwined crises of COVID, traffic deaths, and structural racism.

This document summarizes program goals, work completed to date, and the scope of work for which funding is requested.

## **Purpose of Evaluation**

The goals of the Safe Streets Evaluation Program are to:

- Inform opportunities to refine a project's design: By collecting location-specific data related to transportation behaviors, project design elements are analyzed for their effectiveness and areas are targeted for refinement.
- Communicate the effects of a project to the public, decision makers and other transportation professionals: Evaluation results are shared with members of the public so they may understand the impact of the SFMTA's work on their experience of the city, or with decision makers who want to understand the effects of safety-related infrastructure investments.
- Support the use of innovative design treatments: Also referred to as "proof-of-concept," project evaluations are often used to analyze innovative design treatments that are new to San Francisco. The data associated with proof-of-concept project evaluations are used to demonstrate the applicability of national or international best practices to the local context.
- Streamline the design of future projects that incorporate similar elements: Project evaluations use consistent metrics and analysis techniques to allow for tracking trends over time.



San Francisco County Transportation Authority  
Proposition L Sales Tax Program Allocation Request Form  
**Safe Streets Project Evaluation Program**

## **Progress to Date**

The Safe Streets Project Evaluation Program has made significant progress over the last five years, largely due to consistent funding from the SFCTA. Since its initiation in 2017, the Program has published numerous individual project evaluation fact sheets, four Year-End Reports, established a program website, and most importantly- has been effectively used to measure performance and make important adjustments to a wide range of bicycle, pedestrian, and traffic calming projects. Today, the Program serves as a model for other cities and has been presented at numerous national conferences.

Please see attachments or the [“Related Reports and Documents” section of the program webpage](#) for the 2018, 2019, 2020-2021, and 2022 (virtual<sup>11</sup>) Safe Streets Project Evaluation Year-End Reports. Please visit [www.sfmta.com/safestreetsevaluation](http://www.sfmta.com/safestreetsevaluation) for more information and other evaluation summaries.

The 2018 and 2019 year-end reports highlighted evaluation findings from capital and quick-build projects evaluated during those years. The 2020-2021 report, while maintaining the focus of the previous reports, also included evaluations on programs associated with the SFMTA response to the COVID-19 pandemic and [Transportation Recovery Plan](#). In 2022 year-end report refocused the entire document from highlighting yearly evaluations to an aggregate analysis of past evaluations completed by the program. This shift was enacted to reduce the redundancy between findings in the annual reports and individual project evaluation fact sheets, and because enough time had passed that there was enough data to track trends overtime. Previous reports could not produce findings over time or an aggregate analysis of programmatic treatments (i.e., separated bikeway travel lane reductions, etc.), because either not enough projects had been implemented to have an adequate sample of projects or because not enough time had elapsed to conduct the analysis.

Going forward, the program will move away from producing annual reports and instead make updates to the 2022-year end interactive report, which is a webpage on the Esri ArcGIS Storymaps platform. Annual updates will follow the format of the 2022 year-end report and focus on an aggregated analysis of findings over time, rather than spotlighting individual project evaluation findings. The interactive report website will be updated with new findings for year 2023 (in-progress), 2024, and 2025. It is estimated that the updates will occur in mid-2024 (for year 2023 update), early 2025 (for year 2024 update), and early 2026 (for year 2025 update).

## **Data Collection and Safe Streets Evaluation Program Database**

For this Program, data is collected through third-party vendors. Vendors/contractors collect information using pneumatic tubes in the roadway to collect vehicle and bike speed/average daily traffic and LIDAR guns (manually operated) to collect vehicle turning speed. Video footage is also used to collect standard intersection vehicle, bike, and pedestrian counts, and to collect less standard information such as yielding/conflict behavior, compliance, and parking/loading data.

This video is typically taken from an aerial or birds eye view and typically at low level resolution, thus protecting privacy. Any information reduced from video footage is always presented anonymously in aggregate via an excel worksheet to protect privacy. Lastly, video footage is

---

<sup>1</sup> Link to 2022 Safe Streets Evaluation Program annual report: [SFMTA.com/SafeStreetsReport2022](http://SFMTA.com/SafeStreetsReport2022)

San Francisco County Transportation Authority  
 Proposition L Sales Tax Program Allocation Request Form  
**Safe Streets Project Evaluation Program**

collected and reduced/analyzed by the third-party vendor to ensure objectivity when measuring project performance. The SFMTA only reviews video footage on occasion when performing quality checks on the vendor's deliverables. When conducting quality checks, the SFMTA views video footage via a drop box link and the footage not saved to SFMTA servers. A typical still shot from video data collection is shown below:



Figure 1: Typical Video Still - 2nd and Howard Streets

Below is a privacy clause from SFMTA's contract with Kittleson Associates/Quality Counts (data collection vendor):

*"Quality Counts is dedicated to maintaining the privacy of all individuals involved in our studies. While conducting typical traffic studies in the public realm requires viewing and tabulating movements of vehicles and people, video footage is collected in standard definition making it impossible to effectively view faces, license plates, or any other personally identifiable information. In unique cases where origin-destination/travel time or parking studies using license plate tracking is requested or required, license plate digits can be truncated to ensure anonymity of study subjects. Furthermore, all video and documentation that is part of any study is available only to the requesting agency/client. Video and other files are not publicly available or accessible."*

Currently, data collected is stored in various project folders. The program team has been working on developing an internal central database for all data collected through this program. The database development effort will also update existing data collection standards and procedures to improve program operating efficient and resolve known errors. Upon completion of the database, data will be more easily accessible by SFMTA staff, improve data quality standards, and allow for more efficient aggregation of data between evaluated projects and programs.

San Francisco County Transportation Authority  
Proposition L Sales Tax Program Allocation Request Form

**Safe Streets Project Evaluation Program**

Completed work thus far includes an inventory and review of all standard operating procedures (SOPs) for the standard metrics in the program's evaluation model, and the development of a data model and dictionary for each of the program's SOPs.

Next steps for database development include revising data collection templates to fit the new data models for each of the SOPs, develop the data processing workflows for each, testing, and finally loading previously collected and future data into the database. It is anticipated that the database will launch internally in late 2024.

**FY24-25 through Midway FY25-26 Proposed Project Evaluation List**

The SFMTA identified a Proposed Project Evaluation List for current or future projects that will require evaluation during the next 24-month period (see Table 1 on the next page), as well as summary analysis projects that will aggregate some individual project findings. Projects were selected for evaluation based on three basic criteria: (1) projects that incorporate innovative treatments, (2) garner public interest, and/or (3) require feedback to make design changes. Lastly, all Quick-Build projects continue to be evaluated and are included in the Proposed Project Evaluation List.

Additionally, several larger programmatic studies were identified for evaluation. This includes studies like the Vehicle Speed Study, Left-Turn Speed Study, and No Right on Red Study. These evaluations will evaluate programmatic treatments like vehicle speed limit reduction on commercial corridors, left-turn traffic calming pilots that are installed citywide or in a particular neighborhood, and neighborhood wide restriction of vehicle right turn on a red light. The treatments are installed by their respective programs and the evaluation will be conducted by the Safe Streets Evaluation program. The evaluations will follow similar methodology of Quick-Build evaluations and implement a before and after analysis, measuring traffic safety conditions between pre-treatment implementation to post-treatment implementation.

**Evaluation Key Staff**

To date, an Evaluation Team has been formed to manage the Project Evaluation Program and meets monthly. The Evaluation Team has identified a Program Manager and Program Staff, who will dedicate a portion of their time to the Safe Streets Project Evaluation Program including introducing the program to staff and developing a database/tracking system for ongoing evaluation work.

San Francisco County Transportation Authority  
 Proposition L Sales Tax Program Allocation Request Form  
**Safe Streets Project Evaluation Program**

*Table 1. 24-Month Period Evaluation Project List\**

No.	Project Title	Data Collected in:
<b>Project Evaluations</b>		
1	Quick-Build: Oak Street	2024
2	Quick-Build: 17th Street	2024
3	Quick-Build: Bayshore Boulevard	2024
4	Quick-Build: Bayview Quick-Build (Evans Avenue)	2024
5	Quick-Build: Bayview Quick-Build (Williams Avenue)	2024
6	Quick-Build: Sloat Boulevard	2024
7	Quick-Build: Beach Street	2024
8	Quick-Build: Lincoln Way	2024
9	Quick-Build: Valencia Street	2024
10	Left-Turn Speed Study	2024
11	Quick-Build: Clarendon Avenue	2024
12	Quick-Build: Sutter Street	2025
13	Quick-Build: Larkin Street	2025
14	Quick-Build: Frida Kahlo Way	2025
15	Quick-Build: Lake Merced Boulevard	2025
16	Vehicle Speed Study (AB-43)	2025
17	Downtown No Right Turn on Red Study	2025
18	As-Needed Data Collection	As needed

**Notes:**

\*The 24-month period is between FY 24-25 (July 2024) through FY 25-26 (June 2026).

\*\*As-needed data collection generally include unplanned requests for evaluation such as queue studies to understand congestion as it relates to emergency response. Due to the dynamic nature of Streets division work, there is often need for spot-evaluation and iterative design changes.

San Francisco County Transportation Authority  
 Proposition L Sales Tax Program Allocation Request Form  
**Safe Streets Project Evaluation Program**

**Program Scope to be Funded by Prop L**

The SFMTA has created an estimated budget for the Safe Streets Project Evaluation Program for FY 24/25 through FY25/26 that totals approximately \$450,000 for the 17 projects targeted for evaluation. This budget includes funding for SFMTA staff time (Program Manager and Program Staff), pre-and-post project data collection by a vendor, analysis, development of evaluation summaries, year-end reporting (year 2024 and year 2025), development of data standards and evaluation methodologies, and data management.

**Program Schedule and Milestones**

The SFMTA expects to continue its evaluation work through the Safe Streets Project Program Evaluation to extend over an 24-month period. Certain aspects of the program have already been initiated and will continue through 2024, such as data collection for projects on the Proposed Evaluation Project List. Throughout the 24-month funding period, the program will publish individual project findings through fact sheets published on our website and as-needed evaluation summaries.

**Proposed Tasks and Deliverables**

Because there are multiple projects to evaluate, each of the timelines per task will overlap as some project will be at the beginning stages of evaluation while others are further along. Proposed deliverables during the Program cycle include the following:

Task 1    Project Initiation and Management  
 Cost: \$18,000  
 Task Timeline: July 2024 to June 2026 (ongoing)  
 Responsible Party: SFMTA staff

Deliverables:  
***Deliverable 1A: Kick-off meeting with the SFCTA***  
***Deliverable 1B: Quarterly Progress Updates***  
***Deliverable 1C: As-needed presentations***

Task 2    Data Collection Phase 1  
 Cost: \$160,000  
 Task Timeline: July 2024 – June 2025  
 Responsible Party: Consultants

*Data collection phase 1 includes data collection for all projects in year 2024 and some in 2025 as shown in table 1 in the previous section.*

Task 3    Data Collection Phase 2  
 Cost: \$72,000  
 Task Timeline: July 2025 – December 2025  
 Responsible Party: Consultants

*Data collection phase 2 includes data collection for some projects in year 2025 as shown in table 1 in the previous section.*

San Francisco County Transportation Authority  
Proposition L Sales Tax Program Allocation Request Form  
**Safe Streets Project Evaluation Program**

Task 4 Complete Individual Project Evaluations and Annual Year-End Updates

Cost: \$200,000

Task Timeline: July 2024 to June 2026 (ongoing)

Responsible Party: SFMTA staff

Deliverables:

***Deliverable 4A: Project evaluation fact sheets***

*Note: Project evaluation fact sheets will be created to summarize the individual project evaluations as part of this program. Publication of fact sheets is difficult to predict due to the variability in project delivery and implementation/construction schedules for projects evaluated by this program. It is estimated that fact sheets for the projects in table 1 for year 2024 and 2025 will be produced throughout late 2024 through 2025.*

***Deliverable 4B: 2024 Year-End Update***

*Note: The 2023 Year-End Interactive Report website will be updated to reflect new findings from year 2024. It is anticipated that the update will be made in early 2025.*

***Deliverable 4B: 2025 Year-End Update***

*Note: The 2024 Year-End Interactive Report website will be updated to reflect new findings from year 2025. It is anticipated that the update will be made in early 2026.*

<b>Type of Project in the Prop L 5YPP/Prop AA Strategic Plan?</b>	Named Project
<b>Is requested amount greater than the amount programmed in the relevant 5YPP or Strategic Plan?</b>	Less than or Equal to Programmed Amount
<b>PROP L Amount</b>	\$450,000.00

# San Francisco County Transportation Authority Allocation Request Form

<b>FY of Allocation Action:</b>	FY2024/25
<b>Project Name:</b>	Safe Streets Evaluation Program
<b>Primary Sponsor:</b>	San Francisco Municipal Transportation Agency

**ENVIRONMENTAL CLEARANCE**

<b>Environmental Type:</b>	Categorically Exempt
----------------------------	----------------------

**PROJECT DELIVERY MILESTONES**

Phase	Start		End	
	Quarter	Calendar Year	Quarter	Calendar Year
Planning/Conceptual Engineering (PLAN)	Jul-Aug-Sep	2024	Apr-May-Jun	2026
Environmental Studies (PA&ED)				
Right of Way				
Design Engineering (PS&E)				
Advertise Construction				
Start Construction (e.g. Award Contract)				
Operations (OP)				
Open for Use				
Project Completion (means last eligible expenditure)				

**SCHEDULE DETAILS**

Task 1: Project Initiation and Management  
 Timeline: July 2024 to June 2026 (ongoing work to be funded separately)

Task 2: Data Collection Phase 1  
 Timeline: July 2024 – June 2025

Task 3: Data Collection Phase 2  
 Timeline: July 2025 – December 2025

Task 4: Complete Individual Project Evaluations and Annual Year-End Updates  
 Timeline: July 2024 to June 2026 (ongoing work to be funded separately)



# San Francisco County Transportation Authority Allocation Request Form

<b>FY of Allocation Action:</b>	FY2024/25
<b>Project Name:</b>	Safe Streets Evaluation Program
<b>Primary Sponsor:</b>	San Francisco Municipal Transportation Agency

## FUNDING PLAN - FOR CURRENT REQUEST

Fund Source	Planned	Programmed	Allocated	Project Total
EP-218: Safer and Complete Streets	\$0	\$450,000	\$0	\$450,000
<b>Phases In Current Request Total:</b>	\$0	\$450,000	\$0	\$450,000

## COST SUMMARY

Phase	Total Cost	PROP L - Current Request	Source of Cost Estimate
Planning/Conceptual Engineering	\$450,000	\$450,000	Prior evaluation efforts
Environmental Studies	\$0		
Right of Way	\$0		
Design Engineering	\$0		
Construction	\$0		
Operations	\$0		
<b>Total:</b>	\$450,000	\$450,000	

<b>% Complete of Design:</b>	N/A
<b>As of Date:</b>	N/A
<b>Expected Useful Life:</b>	N/A

## San Francisco County Transportation Authority Prop K/Prop AA Allocation Request Form

### MAJOR LINE ITEM BUDGET

#### BUDGET SUMMARY

Agency	Task 1 - Project Initiation & Management	Task 2 - Data Collection Phase 1	Task 3 - Data Collection Phase 2	Task 4 - Complete Project Evaluations and As-Needed Summaries	Total
SFMTA	\$ 18,000			\$ 200,000	<b>\$ 218,000</b>
Consultant	\$ -	\$ 160,000	\$ 72,000		<b>\$ 232,000</b>
<b>Total</b>	<b>\$ 18,000</b>	<b>\$ 160,000</b>	<b>\$ 72,000</b>	<b>\$ 200,000</b>	<b>\$ 450,000</b>

#### DETAILED LABOR COST ESTIMATE - BY AGENCY

SFMTA	Hours	Base Hourly Rate	Overhead Multiplier	Fully Burdened Hourly Cost	FTE	Total
Transportation Planner IV	100	\$ 79.75	\$ 2.57	\$ 204.62	0.015	<b>\$ 20,500</b>
Transportation Planner III	609	\$ 67.26	\$ 2.60	\$ 174.68	0.07	<b>\$ 106,400</b>
Transportation Planner II	608	\$ 56.69	\$ 2.64	\$ 149.79	0.085	<b>\$ 91,100</b>
Consultant	850	\$ 272.86				<b>\$ 232,000</b>
<b>Total</b>	<b>2167.25</b>				<b>0.17</b>	<b>\$ 450,000</b>

# San Francisco County Transportation Authority Allocation Request Form

<b>FY of Allocation Action:</b>	FY2024/25
<b>Project Name:</b>	Safe Streets Evaluation Program
<b>Primary Sponsor:</b>	San Francisco Municipal Transportation Agency

**SFCTA RECOMMENDATION**

<b>Resolution Number:</b>		<b>Resolution Date:</b>	
<b>Total PROP L Requested:</b>	\$450,000	<b>Total PROP L Recommended</b>	\$450,000

<b>SGA Project Number:</b>		<b>Name:</b>	Safe Streets Evaluation Program
<b>Sponsor:</b>	San Francisco Municipal Transportation Agency	<b>Expiration Date:</b>	12/31/2026
<b>Phase:</b>	Planning/Conceptual Engineering	<b>Fundshare:</b>	100.0%

**Cash Flow Distribution Schedule by Fiscal Year**

Fund Source	FY2024/25	FY2025/26	Total
PROP L EP-218	\$250,000	\$200,000	\$450,000

**Deliverables**

1. Quarterly Progress Reports (QPRs) shall include any revisions/updates to the list of projects that will be evaluated and list any project evaluation fact sheets completed during the quarter, in addition to the standard requirements for QPRs (See Standard Grant Agreement for details).
2. Project evaluation fact sheets shall be uploaded as they are completed and no later than the submission date of the following QPR.
3. With the QPR due September 2024, provide project evaluation findings comprising updates to the 2023 Year-End Interactive Report website, confirmation that all of the projects are complete and open for use, and a robust description of all relevant methodology with the metrics used and how they were defined, the data collection methodology, the data analysis methodology, and lessons learned.
4. With the QPR due March 2025, provide project evaluation findings comprising updates to the 2024 Year-End Interactive Report website, confirmation that all of the projects are complete and open for use, and a robust description of all relevant methodology with the metrics used and how they were defined, the data collection methodology, the data analysis methodology, and lessons learned.
5. With the QPR due March 2026, provide project evaluation findings comprising the 2025 Year-End Interactive Report website, confirmation that all of the projects are complete and open for use, and a robust description of all relevant methodology with the metrics used and how they were defined, the data collection methodology, the data analysis methodology, and lessons learned.

**Notes**

1. SFMTA's Safe Streets Evaluation Updates will be accepted to fulfill the regular project evaluation updates deliverable from the Vision Zero Quick-Build Program, so long as it addresses the subject Quick Build corridors.

Metric	PROP AA	TNC TAX	PROP L
Actual Leveraging - Current Request	No PROP AA	No TNC TAX	0.0%
Actual Leveraging - This Project	No PROP AA	No TNC TAX	0.0%

# San Francisco County Transportation Authority Allocation Request Form

<b>FY of Allocation Action:</b>	FY2024/25
<b>Project Name:</b>	Safe Streets Evaluation Program
<b>Primary Sponsor:</b>	San Francisco Municipal Transportation Agency

## EXPENDITURE PLAN SUMMARY

<b>Current PROP L Request:</b>	\$450,000
--------------------------------	-----------

1) The requested sales tax and/or vehicle registration fee revenues will be used to supplement and under no circumstance replace existing local revenues used for transportation purposes.

Initials of sponsor staff member verifying the above statement:
ML

## CONTACT INFORMATION

	Project Manager	Grants Manager
<b>Name:</b>	Brian Liang	Joel C Goldberg
<b>Title:</b>	Transportation Planner	Grants Procurement Manager
<b>Phone:</b>	(415) 646-4306	555-5555
<b>Email:</b>	brian.liang@sfmta.com	joel.goldberg@sfmta.com

[ this page intentionally left blank ]

# San Francisco County Transportation Authority Allocation Request Form

<b>FY of Allocation Action:</b>	FY2024/25
<b>Project Name:</b>	Tree Planting and Establishment
<b>Primary Sponsor:</b>	Department of Public Works

## EXPENDITURE PLAN INFORMATION

<b>PROP L Expenditure Plans</b>	Tree Planting
<b>Current PROP L Request:</b>	\$1,050,000
<b>Supervisorial District</b>	District 10

## REQUEST

### Brief Project Description

Public Works and its community partners will plant approximately 408 trees in the public right-of-way over the next year with Prop L funds. The trees will be added to the weekly watering schedule for 3 years then receive lifetime maintenance care through StreetTreeSF's guaranteed funding. With these Prop L funds, SFPW preliminarily expects to focus on planting in District 10 based on tree census data, low canopy coverage, and geographic equity.

### Detailed Scope, Project Benefits and Community Outreach

With the passage of Proposition E in November 2016, Public Works has guaranteed funding to care for all street trees in the public right-of-way. In FY24/25, Public Works will use Prop L Tree Planting program funds to plant and establish trees, which Prop E explicitly does not fund. San Francisco Public Works, in partnership with the San Francisco Planning Department, completed a comprehensive street tree census in 2016. This census identified all street trees in the public right-of-way, as well as existing empty basins and potential new planting sites. The census results, many of which still apply, indicate that the neighborhoods in the southeast area of San Francisco such as the Bayview, Excelsior, the Portola, Outer Mission, Visitation Valley, and Crocker Amazon, have the fewest amount of street trees (canopy cover) compared to other neighborhoods. The Sunset and Richmond neighborhoods also have far fewer street trees than other neighborhoods. These are also the neighborhoods that have the greatest number of potential planting site locations. SFPW's Urban Forestry Ordinance, Article 16 of the Public Works Code, requires that a replacement tree be planted in place of trees that have been removed.

Public Works uses the tree census data to identify priority planting sites throughout San Francisco, focusing on districts with the lowest canopy coverage. As sites change due to planting projects, storm damage, and maintenance efforts, the tree asset data is constantly updated and guides new tree planting and replacement tree planting efforts. With these funds, Public Works and its community partners will plant approximately 408 15-gallon trees in FY24-25 and water them for three years to ensure successful establishment. Once established, these trees will be maintained with Prop E funding.

# 32

The preliminary list for FY 25 Prop L funds is primarily focused on trees in D10. See the attached map and list of candidate planting locations. In addition, SFPW was awarded \$12M in federal Inflation Reduction Act (IRA) funds from the US Department of Agriculture to plant and establish trees in low-canopy disadvantaged communities over the next 5 years, which also include major efforts in Districts 3, 4, 6, 9, 10, and 11 over the next 5 years. We expect the geographic focus of Prop L funded trees to evolve throughout the FY24-28 5-year plan as each area becomes saturated over time.

## Project Location

Planting prioritized in District 10

<b>Is this project in an Equity Priority Community?</b>	Yes
<b>Does this project benefit disadvantaged populations?</b>	Yes

## Project Phase(s)

Construction (CON)

## 5YPP/STRATEGIC PLAN INFORMATION

<b>Type of Project in the Prop L 5YPP/Prop AA Strategic Plan?</b>	Named Project
<b>Is requested amount greater than the amount programmed in the relevant 5YPP or Strategic Plan?</b>	Less than or Equal to Programmed Amount
<b>PROP L Amount</b>	\$1,050,000.00



# San Francisco County Transportation Authority Allocation Request Form

<b>FY of Allocation Action:</b>	FY2024/25
<b>Project Name:</b>	Tree Planting and Establishment
<b>Primary Sponsor:</b>	Department of Public Works

**ENVIRONMENTAL CLEARANCE**

<b>Environmental Type:</b>	Categorically Exempt
----------------------------	----------------------

**PROJECT DELIVERY MILESTONES**

Phase	Start		End	
	Quarter	Calendar Year	Quarter	Calendar Year
Planning/Conceptual Engineering (PLAN)				
Environmental Studies (PA&ED)				
Right of Way				
Design Engineering (PS&E)				
Advertise Construction				
Start Construction (e.g. Award Contract)	Jul-Aug-Sep	2024		
Operations (OP)				
Open for Use			Apr-May-Jun	2025
Project Completion (means last eligible expenditure)			Apr-May-Jun	2026

**SCHEDULE DETAILS**

# San Francisco County Transportation Authority Allocation Request Form

<b>FY of Allocation Action:</b>	FY2024/25
<b>Project Name:</b>	Tree Planting and Establishment
<b>Primary Sponsor:</b>	Department of Public Works

## FUNDING PLAN - FOR CURRENT REQUEST

Fund Source	Planned	Programmed	Allocated	Project Total
EP-220: Tree Planting	\$0	\$1,050,000	\$0	\$1,050,000
<b>Phases In Current Request Total:</b>	<b>\$0</b>	<b>\$1,050,000</b>	<b>\$0</b>	<b>\$1,050,000</b>

## COST SUMMARY

Phase	Total Cost	PROP L - Current Request	Source of Cost Estimate
Planning/Conceptual Engineering	\$0		
Environmental Studies	\$0		
Right of Way	\$0		
Design Engineering	\$0		
Construction	\$1,050,000	\$1,050,000	Prior Work
Operations	\$0		
Total:	\$1,050,000	\$1,050,000	

<b>% Complete of Design:</b>	N/A
<b>As of Date:</b>	N/A
<b>Expected Useful Life:</b>	N/A

**San Francisco County Transportation Authority  
Prop L/Prop AA/TNC Tax Allocation Request Form**

**MAJOR LINE ITEM BUDGET - TREE PLANTING AND ESTABLISHMENT**

<b>SUMMARY BY MAJOR LINE ITEM (BY AGENCY LABOR BY TASK)</b>				
<b>Budget Line Item</b>	<b>Number of Trees</b>	<b>Unit Cost</b>	<b>Total Cost</b>	<b>Description</b>
SFPW Labor - Tree Planting and Establishment	408	2,450	999,816	Planting (new and replacement) and establish trees
Tree Planting materials and supplies	408	123	50,184	Tree, stakes, ties, mulch, watering bags, etc.
<b>TOTAL CONSTRUCTION PHASE</b>			<b>\$ 1,050,000</b>	

# San Francisco County Transportation Authority Allocation Request Form

<b>FY of Allocation Action:</b>	FY2024/25
<b>Project Name:</b>	Tree Planting and Establishment
<b>Primary Sponsor:</b>	Department of Public Works

**SFCTA RECOMMENDATION**

<b>Resolution Number:</b>		<b>Resolution Date:</b>	
<b>Total PROP L Requested:</b>	\$1,050,000	<b>Total PROP L Recommended</b>	\$1,050,000

<b>SGA Project Number:</b>	220-908002	<b>Name:</b>	Tree Planting and Establishment
<b>Sponsor:</b>	Department of Public Works	<b>Expiration Date:</b>	06/30/2026
<b>Phase:</b>	Construction	<b>Fundshare:</b>	100.0%

**Cash Flow Distribution Schedule by Fiscal Year**

Fund Source	FY2024/25	FY2025/26	Total
PROP L EP-220	\$262,500	\$787,500	\$1,050,000

**Deliverables**

1. Quarterly progress reports (QPRs) shall include % complete to date, photos of work being performed, number and location of trees planted and established to date, and delivery updates including work performed in the prior quarter, work anticipated to be performed in the upcoming quarter, and any issues that may impact delivery, in addition to all other requirements described in the Standard Grant Agreement.

Metric	PROP AA	TNC TAX	PROP L
Actual Leveraging - Current Request	No PROP AA	No TNC TAX	0.0%
Actual Leveraging - This Project	No PROP AA	No TNC TAX	0.0%

# San Francisco County Transportation Authority Allocation Request Form

<b>FY of Allocation Action:</b>	FY2024/25
<b>Project Name:</b>	Tree Planting and Establishment
<b>Primary Sponsor:</b>	Department of Public Works

## EXPENDITURE PLAN SUMMARY

<b>Current PROP L Request:</b>	\$1,050,000
--------------------------------	-------------

1) The requested sales tax and/or vehicle registration fee revenues will be used to supplement and under no circumstance replace existing local revenues used for transportation purposes.

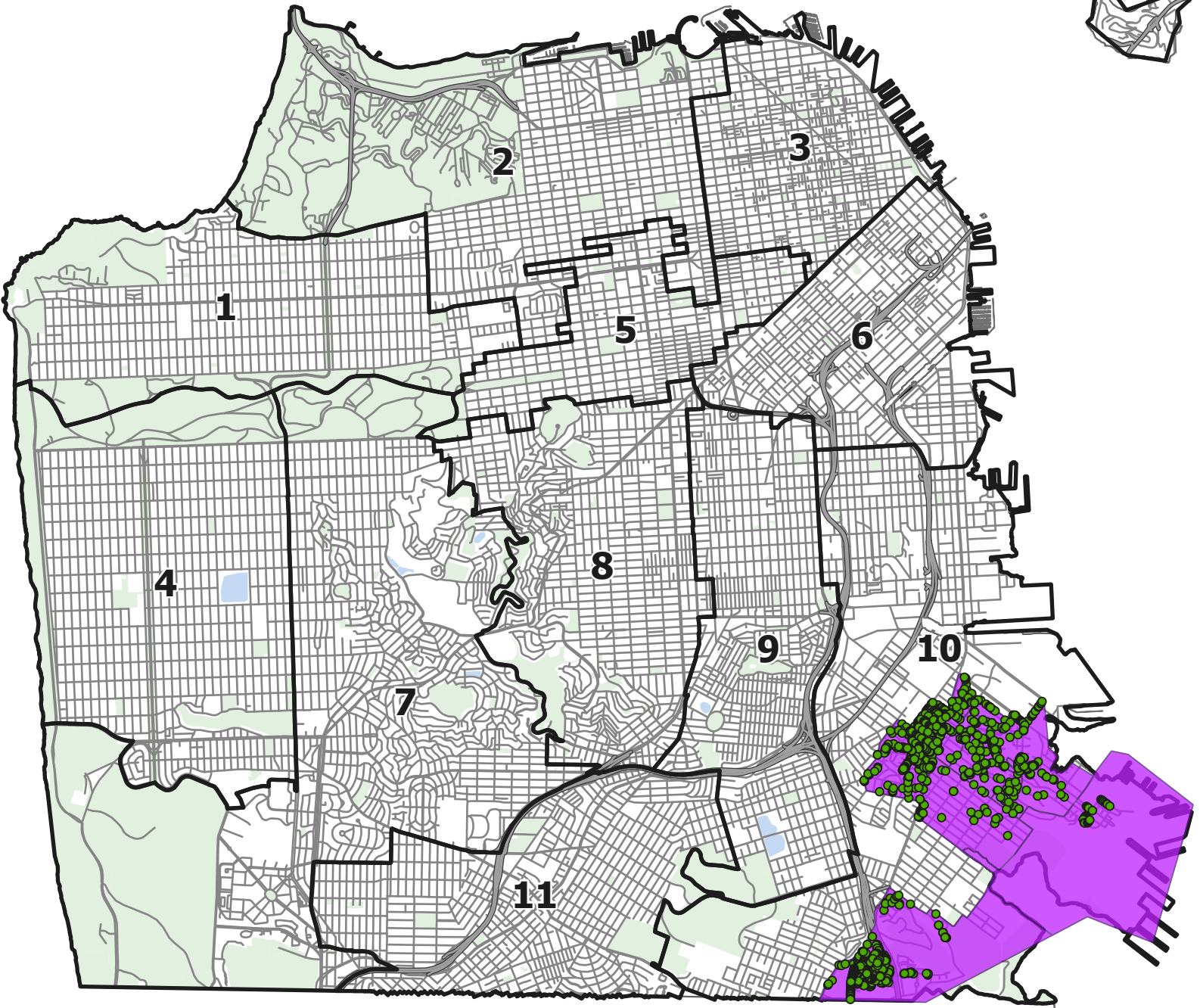
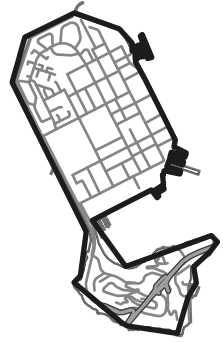
Initials of sponsor staff member verifying the above statement:
JLY

## CONTACT INFORMATION




	Project Manager	Grants Manager
<b>Name:</b>	Nicholas Crawford	Victoria Chan
<b>Title:</b>	Assistant Superintendent	Budget Manager
<b>Phone:</b>	(415) 695-2103	(415) 205-6316
<b>Email:</b>	nicholas.crawford@sfdpw.org	victoria.w.chan@sfdpw.org

# Tree Planting Sites and Selected SB 535 Disadvantaged Census Tracts

## Attachment 1



### Legend

-  BOS Districts
-  Potential and Empty Planting Sites In Selected SB 535 Disadvantaged Census Tracts (1,035)
-  Selected SB535 Disadvantaged Census Tracts

## Attachment 2

## Tree Planting Sites - FY24/25 Priority Sites for Prop L Funds

District	Location	PlantingSiteType	RequestType	Tree No.	In EPC?
10	4101 03rd St : Hudson Ave - Innes Ave	Planting Site :: Planting site	Sidewalk, Curb side : Cutout : Empty	4	Yes
10	4301 03rd St : Newhall St - Kirkwood Ave	Potential Site :: Potential Site	Sidewalk, Curb side : Cutout : Empty	1	Yes
10	4300x 03rd St : Newhall St - Kirkwood Ave	California Fan Palm :: Washingtonia filifera	Median : Cutout : Empty	1	Yes
10	4300x 03rd St : Newhall St - Kirkwood Ave	California Fan Palm :: Washingtonia filifera	Median : Cutout : Empty	2	Yes
10	4517 03rd St : La Salle Ave - McKinnon Ave	Planting Site :: Planting site	Sidewalk, Curb side : Cutout : Empty	2	Yes
10	4500x 03rd St : La Salle Ave - McKinnon Ave	California Fan Palm :: Washingtonia filifera	Median : Cutout : Empty	2	Yes
10	4500x 03rd St : La Salle Ave - McKinnon Ave	California Fan Palm :: Washingtonia filifera	Median : Cutout : Empty	1	Yes
10	4500x 03rd St : La Salle Ave - McKinnon Ave	California Fan Palm :: Washingtonia filifera	Median : Cutout : Empty	4	Yes
10	4500x 03rd St : La Salle Ave - McKinnon Ave	California Fan Palm :: Washingtonia filifera	Median : Cutout : Empty	3	Yes
10	4500x 03rd St : La Salle Ave - McKinnon Ave	California Fan Palm :: Washingtonia filifera	Median : Cutout : Empty	5	Yes
10	4500x 03rd St : La Salle Ave - McKinnon Ave	California Fan Palm :: Washingtonia filifera	Median : Cutout : Empty	7	Yes
10	4500x 03rd St : La Salle Ave - McKinnon Ave	California Fan Palm :: Washingtonia filifera	Median : Cutout : Empty	6	Yes
10	4500x 03rd St : La Salle Ave - McKinnon Ave	California Fan Palm :: Washingtonia filifera	Median : Cutout : Empty	8	Yes
10	4500x 03rd St : La Salle Ave - McKinnon Ave	California Fan Palm :: Washingtonia filifera	Median : Cutout : Empty	11	Yes
10	4500x 03rd St : La Salle Ave - McKinnon Ave	California Fan Palm :: Washingtonia filifera	Median : Cutout : Empty	10	Yes
10	4500x 03rd St : La Salle Ave - McKinnon Ave	California Fan Palm :: Washingtonia filifera	Median : Cutout : Empty	9	Yes
10	4636 03rd St : McKinnon Ave - Newcomb Ave	Planting Site :: Planting site	Sidewalk, Curb side : Cutout : Empty	1	Yes
10	4600x 03rd St : McKinnon Ave - Newcomb Ave	California Fan Palm :: Washingtonia filifera	Median : Cutout : Empty	2	Yes
10	4600x 03rd St : McKinnon Ave - Newcomb Ave	California Fan Palm :: Washingtonia filifera	Median : Cutout : Empty	1	Yes
10	4600x 03rd St : McKinnon Ave - Newcomb Ave	California Fan Palm :: Washingtonia filifera	Median : Cutout : Empty	4	Yes
10	4600x 03rd St : McKinnon Ave - Newcomb Ave	California Fan Palm :: Washingtonia filifera	Median : Cutout : Empty	3	Yes
10	4704 03rd St : Newcomb Ave - Oakdale Ave	Stump :: Stump	Sidewalk, Curb side : Cutout : Empty	1	Yes
10	4700x 03rd St : Newcomb Ave - Oakdale Ave	California Fan Palm :: Washingtonia filifera	Median : Cutout : Empty	1	Yes
10	4700x 03rd St : Newcomb Ave - Oakdale Ave	California Fan Palm :: Washingtonia filifera	Median : Cutout : Empty	3	Yes
10	4700x 03rd St : Newcomb Ave - Oakdale Ave	California Fan Palm :: Washingtonia filifera	Median : Cutout : Empty	2	Yes
10	4706 03rd St : Newcomb Ave - Oakdale Ave	Stump :: Stump	Sidewalk, Curb side : Cutout : Empty	1	Yes
10	4702 03rd St : Newcomb Ave - Oakdale Ave	Stump :: Stump	Sidewalk, Curb side : Cutout : Empty	1	Yes
10	4800 03rd St : Oakdale Ave - Palou Ave	Potential Site :: Potential Site	Sidewalk, Curb side : Cutout : Abandoned	1	Yes
10	4900x 03rd St : Palou Ave - Quesada Ave	California Fan Palm :: Washingtonia filifera	Median : Cutout : Empty	2	Yes
10	4900x 03rd St : Palou Ave - Quesada Ave	California Fan Palm :: Washingtonia filifera	Median : Cutout : Empty	1	Yes
10	5048 03rd St : Quesada Ave - Revere Ave	Potential Site :: Potential Site	Sidewalk, Curb side : Cutout : Empty	2	Yes
10	5000x 03rd St : Quesada Ave - Revere Ave	California Fan Palm :: Washingtonia filifera	Median : Cutout : Empty	1	Yes
10	5000x 03rd St : Quesada Ave - Revere Ave	California Fan Palm :: Washingtonia filifera	Median : Cutout : Empty	3	Yes
10	5000x 03rd St : Quesada Ave - Revere Ave	California Fan Palm :: Washingtonia filifera	Median : Cutout : Empty	2	Yes
10	5000x 03rd St : Quesada Ave - Revere Ave	California Fan Palm :: Washingtonia filifera	Median : Cutout : Empty	5	Yes
10	5000x 03rd St : Quesada Ave - Revere Ave	California Fan Palm :: Washingtonia filifera	Median : Cutout : Empty	4	Yes
10	5024 03rd St : Quesada Ave - Revere Ave	Potential Site :: Potential Site	Sidewalk, Curb side : Cutout : Abandoned	1	Yes
10	5100x 03rd St : Shafter Ave - Thomas Ave	California Fan Palm :: Washingtonia filifera	Median : Cutout : Empty	2	Yes
10	5100x 03rd St : Shafter Ave - Thomas Ave	California Fan Palm :: Washingtonia filifera	Median : Cutout : Empty	1	Yes
10	5210 03rd St : Thornton Ave - Underwood Ave	Brisbane Box :: Lophostemon confertus	Sidewalk, Curb side : Cutout : Empty	1	Yes
10	5290 03rd St : Underwood Ave - Williams Ave	Potential Site :: Potential Site	Sidewalk, Curb side : Cutout : Abandoned	1	Yes
10	5290 03rd St : Underwood Ave - Williams Ave	Potential Site :: Potential Site	Sidewalk, Curb side : Cutout : Abandoned	2	Yes
10	1 Ardath Ct : Hudson Ave - End: 01-99 Block	Stump :: Stump	Sidewalk, Curb side : Cutout : Empty	26	Yes
10	2059 Bay Shore Blvd : Hwy 101 S Off Ramp - Lois Ln	Potential Site :: Potential Site	Sidewalk, Curb side : Cutout : Potential	3	No
10	2201 Bay Shore Blvd : Blanken Ave - San Bruno Ave	Planting Site :: Planting site	Sidewalk, Curb side : Cutout : Empty	8	No
10	2201 Bay Shore Blvd : San Bruno Ave - Leland Ave	Planting Site :: Planting site	Sidewalk, Curb side : Cutout : Empty	5	No
10	2200 Bay Shore Blvd : San Bruno Ave - Raymond Ave	Planting Site :: Planting site	Median : Cutout : Empty	4	No
10	2500 Bay Shore Blvd : Visitacion Ave - Sunnysdale Ave	Planting Site :: Planting site	Sidewalk, Curb side : Cutout : Empty	4	No
10	2500 Bay Shore Blvd : Visitacion Ave - Sunnysdale Ave	Planting Site :: Planting site	Sidewalk, Curb side : Cutout : Empty	5	No
10	25X Bay View Rd : Latona St - Pomona St	Planting Site :: Planting site	Sidewalk, Curb side : Cutout : Empty	4	Yes
10	25X Bay View Rd : Latona St - Pomona St	Planting Site :: Planting site	Sidewalk, Curb side : Cutout : Empty	1	Yes
10	40 Bay View Rd : Latona St - Pomona St	Planting Site (pave) :: Planting site (pave)	Sidewalk, Curb side : Cutout : Empty	1	Yes
10	75 Beatrice Ln : Espanola St - Lillian St	Potential Site :: Potential Site	Sidewalk, Curb side : Cutout : Potential	1	Yes
10	16 Beatrice Ln : Espanola St - Lillian St	Potential Site :: Potential Site	Sidewalk, Curb side : Cutout : Potential	2	Yes
10	16 Beatrice Ln : Espanola St - Lillian St	Potential Site :: Potential Site	Sidewalk, Curb side : Cutout : Potential	3	Yes
10	11 Bell Ct : Start: 01-12 Block - Whitney Young Cir	Stump :: Stump	Sidewalk, Curb side : Cutout : Empty	1	Yes
10	27 Blanken Ave : Bay Shore Blvd - Tunnel Ave	Potential Site :: Potential Site	Sidewalk, Curb side : Cutout : Potential	1	No
10	19 Blanken Ave : Bay Shore Blvd - Tunnel Ave	Potential Site :: Potential Site	Sidewalk, Curb side : Cutout : Potential	1	No
10	120 Blanken Ave : Tunnel Ave - Wheeler Ave	Potential Site :: Potential Site	Sidewalk, Curb side : Cutout : Potential	1	No
10	130 Blanken Ave : Tunnel Ave - Wheeler Ave	Potential Site :: Potential Site	Sidewalk, Curb side : Cutout : Potential	1	No
10	140 Blanken Ave : Tunnel Ave - Wheeler Ave	Potential Site :: Potential Site	Sidewalk, Curb side : Cutout : Potential	1	No
10	115 Blanken Ave : Tunnel Ave - Wheeler Ave	Potential Site :: Potential Site	Sidewalk, Curb side : Cutout : Potential	1	No
10	199 Blanken Ave : Tunnel Ave - Wheeler Ave	Planting Site :: Planting site	Sidewalk, Curb side : Cutout : Empty	3	No
10	200 Blanken Ave : Wheeler Ave - Peninsula Ave	Potential Site :: Potential Site	Sidewalk, Curb side : Cutout : Potential	1	No
10	200 Blanken Ave : Wheeler Ave - Peninsula Ave	Potential Site :: Potential Site	Sidewalk, Curb side : Cutout : Potential	2	No
10	350 Blanken Ave : Peninsula Ave - Tocoloma Ave	Potential Site :: Potential Site	Sidewalk, Curb side : Cutout : Potential	1	No
10	350 Blanken Ave : Peninsula Ave - Tocoloma Ave	Potential Site :: Potential Site	Sidewalk, Curb side : Cutout : Potential	2	No
10	399 Blanken Ave : Peninsula Ave - Tocoloma Ave	Potential Site :: Potential Site	Sidewalk, Curb side : Cutout : Potential	2	No
10	400 Blanken Ave : Tocoloma Ave - Nueva Ave	Potential Site :: Potential Site	Sidewalk, Curb side : Cutout : Potential	1	No
10	400 Blanken Ave : Tocoloma Ave - Nueva Ave	Potential Site :: Potential Site	Sidewalk, Curb side : Cutout : Potential	2	No
10	424 Blanken Ave : Tocoloma Ave - Nueva Ave	Potential Site :: Potential Site	Sidewalk, Curb side : Cutout : Potential	1	No
10	440 Blanken Ave : Tocoloma Ave - Nueva Ave	Potential Site :: Potential Site	Sidewalk, Curb side : Cutout : Potential	1	No
10	500 Blanken Ave : Nueva Ave - Gillette Ave	Potential Site :: Potential Site	Sidewalk, Curb side : Cutout : Potential	1	No

## Tree Planting Sites - FY24/25 Priority Sites for Prop L Funds

District	Location	PlantingSiteType	RequestType	Tree No.	In EPC?
10	516 Blanken Ave : Nueva Ave - Gillette Ave	Potential Site :: Potential Site	Sidewalk, Curb side : Cutout : Potential	1	No
10	528 Blanken Ave : Nueva Ave - Gillette Ave	Potential Site :: Potential Site	Sidewalk, Curb side : Cutout : Potential	1	No
10	534 Blanken Ave : Nueva Ave - Gillette Ave	Potential Site :: Potential Site	Sidewalk, Curb side : Cutout : Potential	1	No
10	511 Blanken Ave : Nueva Ave - Gillette Ave	Potential Site :: Potential Site	Sidewalk, Curb side : Cutout : Potential	1	No
10	114 Bridgeview Dr : Newhall St - Tampa Ln	Planting Site :: Planting site	Sidewalk, Curb side : Cutout : Empty	1	No
10	66 Bridgeview Dr : Newhall St - Tampa Ln	Planting Site :: Planting site	Sidewalk, Curb side : Cutout : Empty	1	No
10	35 Bridgeview Dr : Newhall St - Tampa Ln	Planting Site :: Planting site	Sidewalk, Curb side : Cutout : Empty	1	No
10	115 Bridgeview Dr : Newhall St - Tampa Ln	Potential Site :: Potential Site	: : Potential	1	No
10	87 Bridgeview Dr : Newhall St - Tampa Ln	Potential Site :: Potential Site	: : Potential	1	No
10	71 Bridgeview Dr : Newhall St - Tampa Ln	Potential Site :: Potential Site	: : Potential	1	No
10	94 Bridgeview Dr : Newhall St - Tampa Ln	Potential Site :: Potential Site	: : Potential	1	No
10	26 Bridgeview Dr : Newhall St - Tampa Ln	Planting Site :: Planting site	: : Empty	1	No
10	30 Bridgeview Dr : Newhall St - Tampa Ln	Planting Site :: Planting site	: : Empty	1	No
10	54 Bridgeview Dr : Newhall St - Tampa Ln	Planting Site :: Planting site	: : Empty	1	No
10	58 Bridgeview Dr : Newhall St - Tampa Ln	Planting Site :: Planting site	: : Empty	1	No
10	110 Bridgeview Dr : Newhall St - Tampa Ln	Planting Site :: Planting site	: : Empty	1	No
10	19 Bridgeview Dr : Newhall St - Tampa Ln	Potential Site :: Potential Site	: : Potential	1	No
10	7 Bridgeview Dr : Newhall St - Tampa Ln	Potential Site :: Potential Site	: : Potential	1	No
10	50 Bridgeview Dr : Newhall St - Tampa Ln	Potential Site :: Potential Site	: : Potential	1	No
10	74 Bridgeview Dr : Newhall St - Tampa Ln	Potential Site :: Potential Site	: : Potential	1	No
10	78 Bridgeview Dr : Newhall St - Tampa Ln	Potential Site :: Potential Site	: : Potential	1	No
10	90 Bridgeview Dr : Newhall St - Tampa Ln	Potential Site :: Potential Site	: : Potential	1	No
10	143 Bridgeview Dr : Tampa Ln - Unnamed #021	Potential Site :: Potential Site	: : Potential	1	No
10	126 Bridgeview Dr : Tampa Ln - Unnamed #021	Potential Site :: Potential Site	: : Potential	1	No
10	142 Bridgeview Dr : Tampa Ln - Unnamed #021	Potential Site :: Potential Site	: : Potential	1	No
10	186 Bridgeview Dr : Tampa Ln - Unnamed #021	Potential Site :: Potential Site	: : Potential	1	No
10	229 Bridgeview Dr : Unnamed 021 - Thorne Way	Planting Site :: Planting site	Sidewalk, Curb side : Cutout : Empty	1	No
10	210 Bridgeview Dr : Unnamed 021 - Thorne Way	Planting Site :: Planting site	Sidewalk, Property side : Yard : Empty	1	No
10	230 Bridgeview Dr : Unnamed 021 - Thorne Way	Potential Site :: Potential Site	: : Potential	1	No
10	236 Bridgeview Dr : Unnamed 021 - Thorne Way	Potential Site :: Potential Site	: : Potential	1	No
10	246 Bridgeview Dr : Unnamed 021 - Thorne Way	Potential Site :: Potential Site	: : Potential	1	No
10	209 Bridgeview Dr : Unnamed 021 - Thorne Way	Potential Site :: Potential Site	: : Potential	1	No
10	195 Bridgeview Dr : Unnamed 021 - Thorne Way	Potential Site :: Potential Site	: : Potential	1	No
10	200 Bridgeview Dr : Unnamed 021 - Thorne Way	Potential Site :: Potential Site	: : Potential	1	No
10	226 Bridgeview Dr : Unnamed 021 - Thorne Way	Potential Site :: Potential Site	: : Potential	1	No
10	330 Bridgeview Dr : Topeka Ave - Thornton Ave	Planting Site :: Planting site	Sidewalk, Curb side : Cutout : Empty	1	No
10	343 Bridgeview Dr : Topeka Ave - Thornton Ave	Planting Site :: Planting site	Sidewalk, Curb side : Cutout : Empty	1	No
10	363 Bridgeview Dr : Topeka Ave - Thornton Ave	Planting Site :: Planting site	: : Empty	1	No
10	8 Carpenter Ct : Start: 01-11 Block - Whitney Young Cir	Planting Site (cut) :: Planting site (cut)	Sidewalk, Curb side : Cutout : Empty	2	Yes
10	5 Cashmere St : Cashmere St - Hudson Ave	Stump :: Stump	Sidewalk, Curb side : Cutout : Empty	5	Yes
10	10x Cashmere St : Cashmere St - Hudson Ave	Planting Site (cut) :: Planting site (cut)	Median : Yard : Empty	2	Yes
10	299 Cashmere St : Hudson Ave - Hillview Ct	Potential Site :: Potential Site	Sidewalk, Curb side : Cutout : Potential	12	Yes
10	299x Cashmere St : Hudson Ave - Hillview Ct	Stump :: Stump	Median : Yard : Empty	8	Yes
10	299x Cashmere St : Hudson Ave - Hillview Ct	Stump :: Stump	Median : Yard : Empty	10	Yes
10	299x Cashmere St : Hudson Ave - Hillview Ct	Stump :: Stump	Median : Yard : Empty	11	Yes
10	299x Cashmere St : Hudson Ave - Hillview Ct	Stump :: Stump	Median : Yard : Empty	12	Yes
10	299x Cashmere St : Hudson Ave - Hillview Ct	Stump :: Stump	Median : Yard : Empty	13	Yes
10	299x Cashmere St : Hudson Ave - Hillview Ct	Stump :: Stump	Median : Yard : Empty	15	Yes
10	299 Cashmere St : Hillview Ct - Whitney Young Cir	Planting Site (cut) :: Planting site (cut)	Sidewalk, Curb side : Cutout : Empty	1	Yes
10	299 Cashmere St : Hillview Ct - Whitney Young Cir	Planting Site (cut) :: Planting site (cut)	Sidewalk, Curb side : Cutout : Empty	2	Yes
10	299x Cashmere St : Hudson Ave - Whitney Young Cir	Stump :: Stump	Median : Yard : Empty	9	Yes
10	301x Cashmere St : Whitney Young Cir - La Salle Ave	Stump :: Stump	Median : Yard : Empty	3	Yes
10	301x Cashmere St : Whitney Young Cir - La Salle Ave	Stump :: Stump	Median : Yard : Empty	5	Yes
10	301x Cashmere St : Whitney Young Cir - La Salle Ave	Stump :: Stump	Median : Yard : Empty	30	Yes
10	301 Cashmere St : Whitney Young Cir - La Salle Ave	Planting Site (cut) :: Planting site (cut)	Sidewalk, Curb side : Cutout : Empty	1	Yes
10	301 Cashmere St : Whitney Young Cir - La Salle Ave	Planting Site (cut) :: Planting site (cut)	Sidewalk, Curb side : Cutout : Empty	2	Yes
10	301 Cashmere St : Whitney Young Cir - La Salle Ave	Stump :: Stump	Sidewalk, Curb side : Cutout : Empty	5	Yes
10	200 Cashmere St : Whitney Young Cir - Dukes Ct	Planting Site (cut) :: Planting site (cut)	Sidewalk, Curb side : Cutout : Empty	4	Yes
10	218 Cashmere St : Dukes Ct - La Salle Ave	Potential Site :: Potential Site	Sidewalk, Curb side : Cutout : Potential	4	Yes
10	301x Cashmere St : Dukes Ct - La Salle Ave	Stump :: Stump	Median : Yard : Empty	22	Yes
10	301x Cashmere St : Dukes Ct - La Salle Ave	Stump :: Stump	Median : Yard : Empty	24	Yes
10	301x Cashmere St : Dukes Ct - La Salle Ave	Stump :: Stump	Median : Yard : Empty	29	Yes
10	52 Ceres St : Thornton Ave - Williams Ave	Potential Site :: Potential Site	: : Potential	1	Yes
10	18 Ceres St : Thornton Ave - Williams Ave	Planting Site :: Planting site	: : Empty	2	Yes
10	20 Commer Ct : Start: 01-99 Block - Garlington Ct	Potential Site :: Potential Site	Sidewalk, Curb side : Cutout : Potential	2	Yes
10	21 Commer Ct : Start: 01-99 Block - Garlington Ct	Stump :: Stump	Sidewalk, Curb side : Cutout : Empty	4	Yes
10	80 Diana St : Diana St - Williams Ave	Planting Site :: Planting site	Sidewalk, Curb side : Cutout : Empty	1	No
10	76 Diana St : Diana St - Williams Ave	Planting Site :: Planting site	Sidewalk, Curb side : Cutout : Empty	1	No
10	68 Diana St : Diana St - Williams Ave	Planting Site :: Planting site	: : Empty	1	No
10	46 Diana St : Diana St - Williams Ave	Planting Site :: Planting site	: : Empty	1	No
10	600 Donahue St : Jerrold Ave - Kirkwood Ave	Planting Site :: Planting site	Sidewalk, Curb side : Yard : Empty	1	Yes
10	600 Donahue St : Jerrold Ave - Kirkwood Ave	Stump :: Stump	Sidewalk, Curb side : Yard : Empty	3	Yes
10	600 Donahue St : Jerrold Ave - Kirkwood Ave	Planting Site :: Planting site	Sidewalk, Curb side : Yard : Empty	4	Yes



## Tree Planting Sites - FY24/25 Priority Sites for Prop L Funds

District	Location	PlantingSiteType	RequestType	Tree No.	In EPC?
10	600 Donahue St : Jerrold Ave - Kirkwood Ave	Planting Site :: Planting site	Sidewalk, Curb side : Yard : Empty	5	Yes
10	600 Donahue St : Jerrold Ave - Kirkwood Ave	Stump :: Stump	Sidewalk, Curb side : Yard : Empty	6	Yes
10	600 Donahue St : Jerrold Ave - Kirkwood Ave	Planting Site :: Planting site	Sidewalk, Curb side : Yard : Empty	7	Yes
10	600 Donahue St : Jerrold Ave - Kirkwood Ave	Planting Site :: Planting site	Sidewalk, Curb side : Yard : Empty	8	Yes
10	90 Kiska Rd : Dormitory Rd - Reardon Rd	Planting Site (cut) :: Planting site (cut)	Sidewalk, Property side : Yard : Empty	1	Yes
10	1199 Evans Ave : Jennings St - Keith St	Stump :: Stump	Sidewalk, Curb side : Cutout : Empty	6	Yes
10	1199 Evans Ave : Jennings St - Keith St	Potential Site :: Potential Site	Sidewalk, Curb side : Cutout : Potential	4	Yes
10	1135 Evans Ave : Jennings St - Keith St	Planting Site :: Planting site	Sidewalk, Property side : Yard : Empty	1	Yes
10	1135 Evans Ave : Jennings St - Keith St	Planting Site :: Planting site	Sidewalk, Property side : Yard : Empty	2	Yes
10	1135 Evans Ave : Jennings St - Keith St	Planting Site :: Planting site	Sidewalk, Property side : Yard : Empty	3	Yes
10	1135 Evans Ave : Jennings St - Keith St	Planting Site :: Planting site	Sidewalk, Property side : Yard : Empty	4	Yes
10	1135 Evans Ave : Jennings St - Keith St	Planting Site :: Planting site	Sidewalk, Property side : Yard : Empty	5	Yes
10	1135 Evans Ave : Jennings St - Keith St	Planting Site :: Planting site	Sidewalk, Property side : Yard : Empty	6	Yes
10	1135 Evans Ave : Jennings St - Keith St	Planting Site :: Planting site	Sidewalk, Property side : Yard : Empty	7	Yes
10	1135 Evans Ave : Jennings St - Keith St	Planting Site :: Planting site	Sidewalk, Property side : Yard : Empty	8	Yes
10	1135 Evans Ave : Jennings St - Keith St	Planting Site :: Planting site	Sidewalk, Property side : Yard : Empty	9	Yes
10	1150x Evans Ave : Jennings St - Keith St	Planting Site :: Planting site	Median : Yard : Empty	3	Yes
10	1150x Evans Ave : Jennings St - Keith St	Planting Site :: Planting site	Median : Yard : Empty	1	Yes
10	1150x Evans Ave : Jennings St - Keith St	Planting Site :: Planting site	Median : Yard : Empty	2	Yes
10	1501 Evans Ave : Newhall St - 03rd St	Planting Site (plant) :: Planting site (plant)	Sidewalk, Curb side : Cutout : Empty	4	No
10	1500x Evans Ave : Newhall St - 03rd St	Planting Site :: Planting site	Median : Yard : Empty	2	No
10	1500x Evans Ave : Newhall St - 03rd St	Planting Site :: Planting site	Median : Yard : Empty	3	No
10	1500x Evans Ave : Newhall St - 03rd St	Planting Site :: Planting site	Median : Yard : Empty	1	No
10	150 Executive Park Blvd : Blanken Ave - Candlestick Cove Way	Planting Site (cut) :: Planting site (cut)	Sidewalk, Curb side : Yard : Empty	1	No
10	150 Executive Park Blvd : Blanken Ave - Candlestick Cove Way	Planting Site (cut) :: Planting site (cut)	Sidewalk, Curb side : Yard : Empty	2	No
10	150 Executive Park Blvd : Candlestick Cove Way - End: Block	Planting Site (cut) :: Planting site (cut)	Sidewalk, Curb side : Yard : Empty	4	No
10	150 Executive Park Blvd : Candlestick Cove Way - End: Block	Planting Site (cut) :: Planting site (cut)	Sidewalk, Curb side : Yard : Empty	6	No
10	151 Executive Park Blvd : Candlestick Cove Way - End: Block	Planting Site (cut) :: Planting site (cut)	Sidewalk, Curb side : Yard : Empty	4	No
10	150 Executive Park Blvd : Candlestick Cove Way - End: Block	Planting Site (cut) :: Planting site (cut)	: : Empty	1	No
10	150x Executive Park Blvd : Candlestick Cove Way - End: Block	Planting Site (cut) :: Planting site (cut)	Median : Yard : Empty	3	No
10	250 Executive Park Blvd : Executive Park Blvd - Thomas Mellon Dr	Planting Site (cut) :: Planting site (cut)	Sidewalk, Curb side : Yard : Empty	7	No
10	251 Executive Park Blvd : Executive Park Blvd - Thomas Mellon Dr	Planting Site (cut) :: Planting site (cut)	Sidewalk, Curb side : Yard : Empty	1	No
10	251 Executive Park Blvd : Executive Park Blvd - Thomas Mellon Dr	Planting Site (cut) :: Planting site (cut)	Sidewalk, Curb side : Yard : Empty	5	No
10	1151 FAIRFAX AVE: ACACIA AVE - KEITH ST	Stump :: Stump	Sidewalk, Curb side : Cutout : Empty	2	Yes
10	1275 Fairfax Ave : Keith St - Lane St	Planting Site (cut) :: Planting site (cut)	Sidewalk, Curb side : Cutout : Empty	2	Yes
10	1395 Fairfax Ave : Lane St - Mendell St	Planting Site (plant) :: Planting site (plant)	Sidewalk, Curb side : Cutout : Empty	3	Yes
10	1375 Fairfax Ave : Lane St - Mendell St	Potential Site :: Potential Site	Sidewalk, Curb side : Cutout : Potential	4	Yes
10	1355 Fairfax Ave : Lane St - Mendell St	Potential Site :: Potential Site	Sidewalk, Curb side : Cutout : Potential	1	Yes
10	1355 Fairfax Ave : Lane St - Mendell St	Potential Site :: Potential Site	Sidewalk, Curb side : Cutout : Potential	3	Yes
10	1355 Fairfax Ave : Lane St - Mendell St	Potential Site :: Potential Site	Sidewalk, Curb side : Cutout : Potential	4	Yes
10	1475 Fairfax Ave : Mendell St - Newhall St	Southern Magnolia :: Magnolia grandiflora	Sidewalk, Curb side : Cutout : Empty	2	Yes
10	1445 Fairfax Ave : Mendell St - Newhall St	Planting Site :: Planting site	Sidewalk, Curb side : Cutout : Empty	1	Yes
10	64 Flora St : Bay View Rd - Thornton Ave	Planting Site :: Planting site	Sidewalk, Curb side : Cutout : Empty	1	Yes
10	1 Flora St : Bay View Rd - Thornton Ave	Planting Site (plant) :: Planting site (plant)	Sidewalk, Curb side : Cutout : Empty	5	Yes
10	1 Flora St : Bay View Rd - Thornton Ave	Planting Site (plant) :: Planting site (plant)	Sidewalk, Curb side : Cutout : Empty	6	Yes
10	1 Flora St : Bay View Rd - Thornton Ave	Planting Site :: Planting site	: : Empty	3	Yes
10	1 Flora St : Bay View Rd - Thornton Ave	Planting Site :: Planting site	Sidewalk, Curb side : Cutout : Empty	14	Yes
10	1 Flora St : Bay View Rd - Thornton Ave	Planting Site :: Planting site	Sidewalk, Curb side : Cutout : Empty	15	Yes
10	1 Flora St : Bay View Rd - Thornton Ave	Carob :: Ceratonia siliqua	Sidewalk, Curb side : Cutout : Empty	22	Yes
10	1 Flora St : Bay View Rd - Thornton Ave	Carob :: Ceratonia siliqua	Sidewalk, Curb side : Cutout : Empty	23	Yes
10	1 Flora St : Bay View Rd - Thornton Ave	Carob :: Ceratonia siliqua	Sidewalk, Curb side : Cutout : Empty	24	Yes
10	1 Flora St : Bay View Rd - Thornton Ave	Planting Site :: Planting site	Sidewalk, Curb side : Cutout : Empty	16	Yes
10	1 Flora St : Bay View Rd - Thornton Ave	Planting Site :: Planting site	Sidewalk, Curb side : Cutout : Empty	17	Yes
10	1 Flora St : Bay View Rd - Thornton Ave	Planting Site :: Planting site	Sidewalk, Curb side : Cutout : Empty	18	Yes
10	1 Flora St : Bay View Rd - Thornton Ave	Planting Site :: Planting site	Sidewalk, Curb side : Cutout : Empty	19	Yes
10	1 Flora St : Bay View Rd - Thornton Ave	Planting Site :: Planting site	Sidewalk, Curb side : Cutout : Empty	20	Yes
10	1 Flora St : Bay View Rd - Thornton Ave	Planting Site :: Planting site	Sidewalk, Curb side : Cutout : Empty	21	Yes
10	1515 Galvez Ave : Mendell St - Newhall St	Armstrong Red Maple :: Acer rubrum 'Armstrong'	Sidewalk, Curb side : Cutout : Empty	3	Yes
10	1444 Galvez Ave : Mendell St - Newhall St	Planting Site (plant) :: Planting site (plant)	Sidewalk, Curb side : Cutout : Empty	4	Yes
10	1444 Galvez Ave : Mendell St - Newhall St	Red Maple :: Acer rubrum	Sidewalk, Curb side : Cutout : Empty	5	Yes
10	1500 Galvez Ave : Mendell St - Newhall St	Potential Site :: Potential Site	Sidewalk, Curb side : Cutout : Empty	8	Yes
10	1500 Galvez Ave : Mendell St - Newhall St	Potential Site :: Potential Site	Sidewalk, Curb side : Cutout : Tree	9	Yes
10	1444 Galvez Ave : Mendell St - Newhall St	Red Maple :: Acer rubrum	Sidewalk, Curb side : Cutout : Empty	11	Yes
10	1442 Galvez Ave : Mendell St - Newhall St	Planting Site (plant) :: Planting site (plant)	Sidewalk, Curb side : Cutout : Empty	2	Yes
10	1515 Galvez Ave : Mendell St - Newhall St	Planting Site (cut) :: Planting site (cut)	Sidewalk, Curb side : Cutout : Empty	4	Yes
10	1515 Galvez Ave : Mendell St - Newhall St	Planting Site (cut) :: Planting site (cut)	Sidewalk, Curb side : Cutout : Empty	5	Yes
10	1500 Galvez Ave : Mendell St - Newhall St	Potential Site :: Potential Site	Sidewalk, Curb side : Cutout : Tree	6	Yes
10	2x Garlington Ct : Commer Ct - Garlington Ct	Planting Site (cut) :: Planting site (cut)	Median : Cutout : Empty	2	Yes
10	10 Garlington Ct : Commer Ct - Garlington Ct	Potential Site :: Potential Site	Sidewalk, Curb side : Cutout : Potential	1	Yes
10	81 Gillette Ave : Gillette Ave - Blanken Ave	Stump :: Stump	Sidewalk, Curb side : Cutout : Empty	1	No

## Tree Planting Sites - FY24/25 Priority Sites for Prop L Funds

District	Location	PlantingSiteType	RequestType	Tree No.	In EPC?
10	91 Gillette Ave : Gillette Ave - Blanken Ave	Potential Site :: Potential Site	Sidewalk, Curb side : Cutout : Potential	3	No
10	60 Gillette Ave : Gillette Ave - Blanken Ave	Potential Site :: Potential Site	Sidewalk, Curb side : Cutout : Potential	1	No
10	64 Gillette Ave : Gillette Ave - Blanken Ave	Potential Site :: Potential Site	Sidewalk, Curb side : Cutout : Potential	1	No
10	88 Gillette Ave : Gillette Ave - Blanken Ave	Potential Site :: Potential Site	Sidewalk, Curb side : Cutout : Potential	2	No
10	88 Gillette Ave : Gillette Ave - Blanken Ave	Planting Site :: Planting site	Sidewalk, Curb side : Cutout : Empty	1	No
10	133 Gillette Ave : Blanken Ave - Nibbi Ct	Planting Site :: Planting site	Sidewalk, Curb side : Cutout : Empty	1	No
10	125 Gillette Ave : Blanken Ave - Nibbi Ct	Planting Site :: Planting site	Sidewalk, Curb side : Cutout : Empty	1	No
10	114 Gillette Ave : Blanken Ave - Nibbi Ct	Planting Site :: Planting site	Sidewalk, Curb side : Yard : Empty	3	No
10	144 Gillette Ave : Blanken Ave - Nibbi Ct	Planting Site :: Planting site	Sidewalk, Curb side : Cutout : Empty	1	No
10	144 Gillette Ave : Blanken Ave - Nibbi Ct	Planting Site :: Planting site	Sidewalk, Curb side : Cutout : Empty	2	No
10	144 Gillette Ave : Blanken Ave - Nibbi Ct	Planting Site :: Planting site	Sidewalk, Curb side : Cutout : Empty	3	No
10	1435 Griffith St : Revere Ave - Shafter Ave	Stump :: Stump	Sidewalk, Curb side : Cutout : Empty	2	Yes
10	101 Harbor Rd : Northridge Rd - Ingalls St	Planting Site :: Planting site	Sidewalk, Curb side : Cutout : Empty	1	Yes
10	101 Harbor Rd : Northridge Rd - Ingalls St	Planting Site :: Planting site	Sidewalk, Curb side : Cutout : Empty	7	Yes
10	101 Harbor Rd : Northridge Rd - Ingalls St	Planting Site :: Planting site	Sidewalk, Curb side : Cutout : Empty	8	Yes
10	101 Harbor Rd : Northridge Rd - Ingalls St	Brisbane Box :: Lophostemon confertus	Sidewalk, Curb side : Cutout : Empty	5	Yes
10	100 Harbor Rd : Northridge Rd - Ingalls St	Planting Site :: Planting site	Sidewalk, Curb side : Cutout : Empty	1	Yes
10	100 Harbor Rd : Northridge Rd - Ingalls St	Planting Site :: Planting site	Sidewalk, Curb side : Cutout : Empty	7	Yes
10	200 Harbor Rd : Northridge Rd - Ingalls St	Stump :: Stump	: : Empty	1	Yes
10	200 Harbor Rd : Northridge Rd - Ingalls St	Planting Site :: Planting site	Sidewalk, Curb side : Cutout : Empty	2	Yes
10	200 Harbor Rd : Northridge Rd - Ingalls St	Planting Site :: Planting site	Sidewalk, Curb side : Cutout : Empty	3	Yes
10	201 Harbor Rd : Northridge Rd - Ingalls St	Potential Site :: Potential Site	Sidewalk, Curb side : Cutout : Potential	5	Yes
10	200 Harbor Rd : Northridge Rd - Ingalls St	Potential Site :: Potential Site	Sidewalk, Curb side : Cutout : Potential	6	Yes
10	404 Hawes St : Hudson Ave - Innes Ave	Stump :: Stump	Sidewalk, Property side : Yard : Empty	1	Yes
10	1396 Hawes St : Quesada Ave - Revere Ave	Planting Site :: Planting site	Sidewalk, Curb side : Cutout : Empty	2	Yes
10	1396 Hawes St : Quesada Ave - Revere Ave	Planting Site :: Planting site	Sidewalk, Curb side : Cutout : Empty	3	Yes
10	1398 Hawes St : Quesada Ave - Revere Ave	Potential Site :: Potential Site	Sidewalk, Curb side : Cutout : Tree	NULL	Yes
10	1415 Hawes St : Revere Ave - Shafter Ave	Stump :: Stump	Sidewalk, Curb side : Cutout : Empty	1	Yes
10	228 Hester Ave : Lois Ln - Peninsula Ave	Potential Site :: Potential Site	Sidewalk, Curb side : Cutout : Potential	1	No
10	223 Hester Ave : Lois Ln - Peninsula Ave	Potential Site :: Potential Site	Sidewalk, Curb side : Cutout : Potential	1	No
10	213 Hester Ave : Lois Ln - Peninsula Ave	Planting Site :: Planting site	Front Yard : Yard : Empty	1	No
10	213 Hester Ave : Lois Ln - Peninsula Ave	Planting Site :: Planting site	Front Yard : Yard : Empty	2	No
10	211 Hester Ave : Lois Ln - Peninsula Ave	Planting Site :: Planting site	Back Yard : Yard : Empty	1	No
10	211 Hester Ave : Lois Ln - Peninsula Ave	Planting Site :: Planting site	Back Yard : Yard : Empty	2	No
10	211 Hester Ave : Lois Ln - Peninsula Ave	Planting Site :: Planting site	Back Yard : Yard : Empty	3	No
10	211 Hester Ave : Lois Ln - Peninsula Ave	Planting Site :: Planting site	Back Yard : Yard : Empty	4	No
10	211 Hester Ave : Lois Ln - Peninsula Ave	Planting Site :: Planting site	Back Yard : Yard : Empty	5	No
10	211 Hester Ave : Lois Ln - Peninsula Ave	Planting Site :: Planting site	Back Yard : Yard : Empty	6	No
10	211 Hester Ave : Lois Ln - Peninsula Ave	Planting Site :: Planting site	Back Yard : Yard : Empty	7	No
10	2 Hester Ave : Bay Shore Blvd \ Bayview Park Rd \ Hwy 101 S Off Ramp - Lauren Ct	Potential Site :: Potential Site	Sidewalk, Curb side : Cutout : Potential	1	No
10	68 Hester Ave : Lauren Ct - Lois Ln	Stump :: Stump	Sidewalk, Curb side : Cutout : Empty	2	No
10	211 Hester Ave : Lauren Ct - Lois Ln	Planting Site :: Planting site	Back Yard : Yard : Empty	8	No
10	211 Hester Ave : Lauren Ct - Lois Ln	Planting Site :: Planting site	Back Yard : Yard : Empty	9	No
10	211 Hester Ave : Lauren Ct - Lois Ln	Planting Site :: Planting site	Back Yard : Yard : Empty	10	No
10	211 Hester Ave : Lauren Ct - Lois Ln	Planting Site :: Planting site	Back Yard : Yard : Empty	11	No
10	211 Hester Ave : Lauren Ct - Lois Ln	Planting Site :: Planting site	Back Yard : Yard : Empty	12	No
10	18 Hester Ave : Lauren Ct - Lois Ln	Planting Site :: Planting site	Sidewalk, Curb side : Cutout : Empty	2	No
10	68 Hester Ave : Lauren Ct - Lois Ln	Planting Site :: Planting site	Sidewalk, Curb side : Cutout : Empty	1	No
10	100 Hester Ave : Lauren Ct - Lois Ln	Planting Site :: Planting site	Sidewalk, Curb side : Cutout : Empty	2	No
10	211 Hester Ave : Lauren Ct - Lois Ln	Planting Site :: Planting site	Back Yard : Yard : Empty	19	No
10	211 Hester Ave : Lauren Ct - Lois Ln	Planting Site :: Planting site	Back Yard : Yard : Empty	20	No
10	211 Hester Ave : Lauren Ct - Lois Ln	Planting Site :: Planting site	Back Yard : Yard : Empty	21	No
10	211 Hester Ave : Lauren Ct - Lois Ln	Planting Site :: Planting site	Back Yard : Yard : Empty	22	No
10	211 Hester Ave : Lauren Ct - Lois Ln	Planting Site :: Planting site	Back Yard : Yard : Empty	23	No
10	211 Hester Ave : Lauren Ct - Lois Ln	Planting Site :: Planting site	Back Yard : Yard : Empty	24	No
10	211 Hester Ave : Lauren Ct - Lois Ln	Planting Site :: Planting site	Back Yard : Yard : Empty	13	No
10	211 Hester Ave : Lauren Ct - Lois Ln	Planting Site :: Planting site	Back Yard : Yard : Empty	14	No
10	211 Hester Ave : Lauren Ct - Lois Ln	Planting Site :: Planting site	Back Yard : Yard : Empty	15	No
10	211 Hester Ave : Lauren Ct - Lois Ln	Planting Site :: Planting site	Back Yard : Yard : Empty	16	No
10	211 Hester Ave : Lauren Ct - Lois Ln	Planting Site :: Planting site	Back Yard : Yard : Empty	17	No
10	211 Hester Ave : Lauren Ct - Lois Ln	Planting Site :: Planting site	Back Yard : Yard : Empty	18	No
10	287 Hester Ave : Wheeler Ave - Bay Shore Blvd	Stump :: Stump	Side Yard : Yard : Empty	8	No
10	287 Hester Ave : Wheeler Ave - Bay Shore Blvd	Stump :: Stump	Side Yard : Yard : Empty	10	No
10	299 Hester Ave : Wheeler Ave - Bay Shore Blvd	Planting Site :: Planting site	Side Yard : Yard : Empty	1	No
10	299 Hester Ave : Wheeler Ave - Bay Shore Blvd	Planting Site :: Planting site	Side Yard : Yard : Empty	2	No
10	299 Hester Ave : Wheeler Ave - Bay Shore Blvd	Planting Site :: Planting site	Side Yard : Yard : Empty	3	No
10	299 Hester Ave : Wheeler Ave - Bay Shore Blvd	Planting Site :: Planting site	Side Yard : Yard : Empty	4	No
10	299 Hester Ave : Wheeler Ave - Bay Shore Blvd	Planting Site :: Planting site	Side Yard : Yard : Empty	5	No
10	299 Hester Ave : Wheeler Ave - Bay Shore Blvd	Planting Site :: Planting site	Side Yard : Yard : Empty	6	No
10	299 Hester Ave : Wheeler Ave - Bay Shore Blvd	Planting Site :: Planting site	Side Yard : Yard : Empty	7	No
10	1333 Hudson Ave : Ingalls St - Bertha Ln	Potential Site :: Potential Site	Sidewalk, Curb side : Cutout : Potential	18	Yes
10	1335 Hudson Ave : Bertha Ln - Willie B Kennedy Dr	Potential Site :: Potential Site	Sidewalk, Curb side : Cutout : Potential	2	Yes

## Tree Planting Sites - FY24/25 Priority Sites for Prop L Funds

District	Location	PlantingSiteType	RequestType	Tree No.	In EPC?
10	1335 Hudson Ave : Bertha Ln - Willie B Kennedy Dr	Potential Site :: Potential Site	Sidewalk, Curb side : Cutout : Potential	5	Yes
10	1322 Hudson Ave : Bertha Ln - Willie B Kennedy Dr	Potential Site :: Potential Site	Sidewalk, Curb side : Cutout : Potential	25	Yes
10	1322 Hudson Ave : Whitney Young Cir - Hawkins Ln	Potential Site :: Potential Site	Sidewalk, Curb side : Cutout : Potential	56	Yes
10	1341 Hudson Ave : Whitney Young Cir - Hawkins Ln	Planting Site (cut) :: Planting site (cut)	Sidewalk, Curb side : Cutout : Empty	15	Yes
10	1339 Hudson Ave : Whitney Young Cir - Hawkins Ln	Planting Site (cut) :: Planting site (cut)	Sidewalk, Curb side : Cutout : Empty	2	Yes
10	1339 Hudson Ave : Whitney Young Cir - Hawkins Ln	Planting Site (cut) :: Planting site (cut)	Sidewalk, Curb side : Cutout : Empty	5	Yes
10	1322 Hudson Ave : Whitney Young Cir - Hawkins Ln	Planting Site (cut) :: Planting site (cut)	Sidewalk, Curb side : Cutout : Empty	44	Yes
10	1322 Hudson Ave : Whitney Young Cir - Hawkins Ln	Planting Site (cut) :: Planting site (cut)	Sidewalk, Curb side : Cutout : Empty	45	Yes
10	1341 Hudson Ave : Hawkins Ln - Westbrook Ct	Planting Site (cut) :: Planting site (cut)	Sidewalk, Curb side : Cutout : Empty	12	Yes
10	1328 Hudson Ave : Hawkins Ln - Westbrook Ct	Planting Site (cut) :: Planting site (cut)	Sidewalk, Curb side : Cutout : Empty	3	Yes
10	1341 Hudson Ave : Westbrook Ct - Cashmere St	Planting Site (cut) :: Planting site (cut)	Sidewalk, Curb side : Cutout : Empty	1	Yes
10	1341 Hudson Ave : Westbrook Ct - Cashmere St	Planting Site (cut) :: Planting site (cut)	Sidewalk, Curb side : Cutout : Empty	2	Yes
10	1341 Hudson Ave : Westbrook Ct - Cashmere St	Planting Site (cut) :: Planting site (cut)	Sidewalk, Curb side : Cutout : Empty	4	Yes
10	1341 Hudson Ave : Westbrook Ct - Cashmere St	Planting Site (cut) :: Planting site (cut)	Sidewalk, Curb side : Cutout : Empty	6	Yes
10	1341 Hudson Ave : Westbrook Ct - Cashmere St	Planting Site (cut) :: Planting site (cut)	Sidewalk, Curb side : Cutout : Empty	7	Yes
10	1341 Hudson Ave : Westbrook Ct - Cashmere St	Planting Site (cut) :: Planting site (cut)	Sidewalk, Curb side : Cutout : Empty	9	Yes
10	1351 Hudson Ave : Cashmere St - Reuel Ct	Potential Site :: Potential Site	Sidewalk, Curb side : Cutout : Potential	7	Yes
10	1341 Hudson Ave : Cashmere St - Reuel Ct	Planting Site (cut) :: Planting site (cut)	Sidewalk, Curb side : Cutout : Empty	14	Yes
10	1342 Hudson Ave : Reuel Ct - Keith St	Potential Site :: Potential Site	Sidewalk, Curb side : Cutout : Potential	3	Yes
10	1470X Hudson Ave : Keith St - Mendell St	Stump :: Stump	Sidewalk, Curb side : Cutout : Empty	2	Yes
10	1470X Hudson Ave : Keith St - Mendell St	Stump :: Stump	Sidewalk, Curb side : Cutout : Empty	1	Yes
10	1398 Hudson Ave : Keith St - Mendell St	Potential Site :: Potential Site	Sidewalk, Curb side : Cutout : Potential	2	Yes
10	1409 Hudson Ave : Keith St - Mendell St	Potential Site :: Potential Site	Sidewalk, Curb side : Cutout : Potential	1	Yes
10	1530 Hudson Ave : Mendell St - Newhall St	Potential Site :: Potential Site	Sidewalk, Curb side : Cutout : Potential	1	Yes
10	1546 Hudson Ave : Mendell St - Newhall St	Potential Site :: Potential Site	Sidewalk, Curb side : Cutout : Potential	1	Yes
10	1556 Hudson Ave : Mendell St - Newhall St	Potential Site :: Potential Site	Sidewalk, Curb side : Cutout : Potential	1	Yes
10	1560 Hudson Ave : Mendell St - Newhall St	Potential Site :: Potential Site	Sidewalk, Curb side : Cutout : Potential	1	Yes
10	1580 Hudson Ave : Mendell St - Newhall St	Potential Site :: Potential Site	Sidewalk, Curb side : Cutout : Potential	1	Yes
10	1579 Hudson Ave : Mendell St - Newhall St	Potential Site :: Potential Site	Sidewalk, Curb side : Cutout : Potential	1	Yes
10	1547 Hudson Ave : Mendell St - Newhall St	Potential Site :: Potential Site	Sidewalk, Curb side : Cutout : Potential	1	Yes
10	1541 Hudson Ave : Mendell St - Newhall St	Potential Site :: Potential Site	Sidewalk, Curb side : Cutout : Potential	1	Yes
10	1593 Hudson Ave : Mendell St - Newhall St	Planting Site (cut) :: Planting site (cut)	Sidewalk, Property side : Yard : Empty	3	Yes
10	200x Ingalls St : Innes Ave - Harbor Rd	Planting Site :: Planting site	Sidewalk, Curb side : Cutout : Empty	2	Yes
10	200 Ingalls St : Innes Ave - Harbor Rd	Planting Site :: Planting site	Sidewalk, Property side : Yard : Empty	3	Yes
10	200 Ingalls St : Innes Ave - Harbor Rd	Planting Site :: Planting site	Sidewalk, Property side : Yard : Empty	4	Yes
10	200 Ingalls St : Innes Ave - Harbor Rd	Stump :: Stump	Sidewalk, Curb side : Cutout : Empty	6	Yes
10	251 Ingalls St : Innes Ave - Harbor Rd	Stump :: Stump	Sidewalk, Curb side : Cutout : Empty	2	Yes
10	251 Ingalls St : Innes Ave - Harbor Rd	Potential Site :: Potential Site	Sidewalk, Curb side : Cutout : Potential	3	Yes
10	215 Ingalls St : Innes Ave - Harbor Rd	Potential Site :: Potential Site	Sidewalk, Curb side : Cutout : Potential	1	Yes
10	1050X Ingalls St : Harbor Rd - Hudson Ave	Potential Site :: Potential Site	Sidewalk, Curb side : Cutout : Empty	3	Yes
10	1051 Ingalls St : Harbor Rd - Hudson Ave	Planting Site :: Planting site	Sidewalk, Curb side : Cutout : Empty	15	Yes
10	1051 Ingalls St : Harbor Rd - Hudson Ave	Potential Site :: Potential Site	Sidewalk, Curb side : Cutout : Potential	2	Yes
10	1051 Ingalls St : Harbor Rd - Hudson Ave	Potential Site :: Potential Site	Sidewalk, Curb side : Cutout : Potential	6	Yes
10	1200 Ingalls St : Beatrice Ln - La Salle Ave	Potential Site :: Potential Site	Sidewalk, Curb side : Cutout : Potential	1	Yes
10	1200 Ingalls St : Beatrice Ln - La Salle Ave	Potential Site :: Potential Site	Sidewalk, Curb side : Cutout : Potential	5	Yes
10	1200 Ingalls St : Beatrice Ln - La Salle Ave	Potential Site :: Potential Site	Sidewalk, Curb side : Cutout : Potential	6	Yes
10	1241 Ingalls St : Beatrice Ln - La Salle Ave	Planting Site (pave) :: Planting site (pave)	Sidewalk, Curb side : Cutout : Empty	1	Yes
10	1201 Ingalls St : Beatrice Ln - La Salle Ave	Stump :: Stump	Sidewalk, Curb side : Cutout : Empty	2	Yes
10	1176x Ingalls St : Beatrice Ln - La Salle Ave	Planting Site :: Planting site	Sidewalk, Curb side : Cutout : Empty	22	Yes
10	1176x Ingalls St : Beatrice Ln - La Salle Ave	Planting Site :: Planting site	Sidewalk, Curb side : Cutout : Empty	17	Yes
10	1280 Ingalls St : George Ct - Oakdale Ave	Potential Site :: Potential Site	Sidewalk, Curb side : Cutout : Potential	1	Yes
10	1280 Ingalls St : George Ct - Oakdale Ave	Stump :: Stump	Sidewalk, Curb side : Cutout : Empty	1	Yes
10	1625 Ingalls St : Quesada Ave - Revere Ave	Stump :: Stump	Sidewalk, Curb side : Cutout : Empty	1	Yes
10	1700 Ingalls St : Revere Ave - Shafter Ave	Stump :: Stump	Sidewalk, Curb side : Cutout : Empty	7	Yes
10	1898 Ingalls St : Shafter Ave - Thomas Ave	Stump :: Stump	Sidewalk, Curb side : Cutout : Empty	2	Yes
10	855 Ingerson Ave : Coronado St - Hawes St	Stump :: Stump	Sidewalk, Curb side : Cutout : Empty	1	No
10	860 Innes Ave : Fitch St - Griffith St	Planting Site :: Planting site	Sidewalk, Curb side : Cutout : Empty	1	Yes
10	870 Innes Ave : Fitch St - Griffith St	Planting Site :: Planting site	Sidewalk, Curb side : Cutout : Empty	1	Yes
10	880 Innes Ave : Fitch St - Griffith St	Planting Site :: Planting site	Sidewalk, Curb side : Cutout : Empty	1	Yes
10	820 Innes Ave : Fitch St - Griffith St	Planting Site :: Planting site	Sidewalk, Curb side : Cutout : Empty	1	Yes
10	911 Innes Ave : Griffith St - Hunters Point Blvd	Planting Site :: Planting site	Sidewalk, Curb side : Cutout : Empty	1	Yes
10	911 Innes Ave : Griffith St - Hunters Point Blvd	Planting Site :: Planting site	Sidewalk, Property side : Yard : Empty	4	Yes
10	951 Innes Ave : Hunters Point Blvd - Hawes St	Planting Site :: Planting site	Sidewalk, Curb side : Cutout : Empty	1	Yes
10	1000 Innes Ave : Hawes St - Marist Ct	Planting Site :: Planting site	Sidewalk, Property side : Yard : Empty	1	Yes
10	1000 Innes Ave : Hawes St - Marist Ct	Planting Site :: Planting site	Sidewalk, Property side : Yard : Empty	2	Yes
10	1000 Innes Ave : Hawes St - Marist Ct	Planting Site :: Planting site	Sidewalk, Property side : Yard : Empty	3	Yes
10	1000 Innes Ave : Hawes St - Marist Ct	Planting Site :: Planting site	Sidewalk, Property side : Yard : Empty	4	Yes
10	1001 Innes Ave : Hawes St - Marist Ct	Planting Site :: Planting site	Sidewalk, Property side : Yard : Empty	2	Yes
10	1001 Innes Ave : Hawes St - Marist Ct	Planting Site :: Planting site	Sidewalk, Property side : Yard : Empty	3	Yes
10	1001 Innes Ave : Hawes St - Marist Ct	Planting Site :: Planting site	Sidewalk, Property side : Yard : Empty	9	Yes
10	1001 Innes Ave : Hawes St - Marist Ct	Planting Site :: Planting site	Sidewalk, Property side : Yard : Empty	10	Yes
10	1086 Innes Ave : Marist Ct - Ingalls St	Planting Site :: Planting site	Sidewalk, Curb side : Cutout : Empty	1	Yes
10	1086 Innes Ave : Marist Ct - Ingalls St	Planting Site :: Planting site	Sidewalk, Property side : Yard : Empty	2	Yes

## Tree Planting Sites - FY24/25 Priority Sites for Prop L Funds

District	Location	PlantingSiteType	RequestType	Tree No.	In EPC?
10	1427X Innes Ave : Innes Ave - Mendell St	Planting Site (cut) :: Planting site (cut)	Median : Yard : Empty	1	Yes
10	1427x Innes Ave : Innes Ave - Mendell St	Stump :: Stump	Median : Yard : Empty	9	Yes
10	1427X Innes Ave : Innes Ave - Mendell St	Planting Site (cut) :: Planting site (cut)	Median : Yard : Empty	3	Yes
10	1427X Innes Ave : Innes Ave - Mendell St	Planting Site (cut) :: Planting site (cut)	Median : Yard : Empty	2	Yes
10	1427x Innes Ave : Innes Ave - Mendell St	Stump :: Stump	Median : Yard : Empty	11	Yes
10	1427x Innes Ave : Innes Ave - Mendell St	Planting Site (cut) :: Planting site (cut)	Median : Yard : Empty	4	Yes
10	1427x Innes Ave : Innes Ave - Mendell St	Planting Site (cut) :: Planting site (cut)	Median : Yard : Empty	5	Yes
10	1581 Innes Ave : Mendell St - Newhall St	Potential Site :: Potential Site	Sidewalk, Curb side : Cutout : Potential	1	Yes
10	1581 Innes Ave : Mendell St - Newhall St	Potential Site :: Potential Site	Sidewalk, Curb side : Cutout : Potential	2	Yes
10	1555 Innes Ave : Mendell St - Newhall St	Potential Site :: Potential Site	Sidewalk, Curb side : Cutout : Potential	1	Yes
10	1543 Innes Ave : Mendell St - Newhall St	Potential Site :: Potential Site	Sidewalk, Curb side : Cutout : Potential	1	Yes
10	1570 Innes Ave : Mendell St - Newhall St	Planting Site :: Planting site	Sidewalk, Curb side : Cutout : Empty	1	Yes
10	4 Jakey Ct : Start: 01-12 Block - Hawkins Ln	Stump :: Stump	Sidewalk, Property side : Yard : Empty	1	Yes
10	700 Jamestown Ave : Ignacio Ave - Gilroy St	Planting Site :: Planting site	Sidewalk, Curb side : Cutout : Empty	4	No
10	700x Jamestown Ave : Ignacio Ave - Gilroy St	Planting Site :: Planting site	Sidewalk, Curb side : Cutout : Empty	20	No
10	700x Jamestown Ave : Ignacio Ave - Gilroy St	Planting Site :: Planting site	Sidewalk, Curb side : Cutout : Empty	21	No
10	700x Jamestown Ave : Ignacio Ave - Gilroy St	Planting Site :: Planting site	Sidewalk, Curb side : Cutout : Empty	22	No
10	700x Jamestown Ave : Ignacio Ave - Gilroy St	Planting Site :: Planting site	Sidewalk, Curb side : Cutout : Empty	23	No
10	750x Jamestown Ave : Gilroy St - Griffith St	Planting Site :: Planting site	Sidewalk, Curb side : Cutout : Empty	1	No
10	750x Jamestown Ave : Gilroy St - Griffith St	Planting Site :: Planting site	Sidewalk, Curb side : Cutout : Empty	10	No
10	800x Jamestown Ave : Griffith St - Coronado St	Planting Site :: Planting site	Sidewalk, Curb side : Cutout : Empty	7	No
10	800x Jamestown Ave : Griffith St - Coronado St	Planting Site :: Planting site	Sidewalk, Curb side : Cutout : Empty	8	No
10	1089 Jamestown Ave : Ingalls St - Jennings St	Planting Site (cut) :: Planting site (cut)	Sidewalk, Curb side : Yard : Empty	2	No
10	1001 Jamestown Ave : Ingalls St - Jennings St	Planting Site (cut) :: Planting site (cut)	Sidewalk, Curb side : Yard : Empty	1	No
10	101X Jennings St : Cargo Way - Burke Ave	Planting Site :: Planting site	Sidewalk, Curb side : Cutout : Empty	35	Yes
10	101 Jennings St : Cargo Way - Burke Ave	Potential Site :: Potential Site	: : Potential	41	Yes
10	101 Jennings St : Cargo Way - Burke Ave	Potential Site :: Potential Site	: : Potential	42	Yes
10	121 Jennings St : Cargo Way - Burke Ave	Potential Site :: Potential Site	Sidewalk, Property side : Cutout : Abandoned	NULL	Yes
10	101X Jennings St : Burke Ave - Newhall St	Planting Site :: Planting site	Sidewalk, Curb side : Cutout : Empty	33	Yes
10	101X Jennings St : Newhall St - Evans Ave	Planting Site :: Planting site	Sidewalk, Curb side : Cutout : Empty	4	Yes
10	101X Jennings St : Newhall St - Evans Ave	Stump :: Stump	Sidewalk, Curb side : Cutout : Empty	13	Yes
10	101X Jennings St : Newhall St - Evans Ave	Planting Site :: Planting site	Sidewalk, Curb side : Cutout : Empty	16	Yes
10	101X Jennings St : Newhall St - Evans Ave	Planting Site :: Planting site	Sidewalk, Curb side : Cutout : Empty	18	Yes
10	101X Jennings St : Newhall St - Evans Ave	Planting Site :: Planting site	Sidewalk, Curb side : Cutout : Empty	25	Yes
10	3315 Jennings St : Jamestown Ave - Key Ave	Planting Site (cut) :: Planting site (cut)	Sidewalk, Curb side : Yard : Empty	1	No
10	3305 Jennings St : Jamestown Ave - Key Ave	Planting Site (cut) :: Planting site (cut)	Sidewalk, Curb side : Yard : Empty	1	No
10	3303 Jennings St : Jamestown Ave - Key Ave	Planting Site (cut) :: Planting site (cut)	Sidewalk, Curb side : Yard : Empty	1	No
10	3418 Jennings St : Key Ave - Le Conte Ave	Potential Site :: Potential Site	Sidewalk, Curb side : Cutout : Potential	1	No
10	3418 Jennings St : Key Ave - Le Conte Ave	Potential Site :: Potential Site	Sidewalk, Curb side : Cutout : Potential	2	No
10	3419 Jennings St : Key Ave - Le Conte Ave	Planting Site (cut) :: Planting site (cut)	Sidewalk, Curb side : Yard : Empty	1	No
10	1563 Jerrold Ave : Mendell St - 03rd St	Planting Site (pave) :: Planting site (pave)	Sidewalk, Curb side : Cutout : Empty	4	Yes
10	1508 Jerrold Ave : Mendell St - 03rd St	Potential Site :: Potential Site	Sidewalk, Curb side : Cutout : Potential	1	Yes
10	1516 Jerrold Ave : Mendell St - 03rd St	Potential Site :: Potential Site	Sidewalk, Curb side : Cutout : Potential	1	Yes
10	1524 Jerrold Ave : Mendell St - 03rd St	Potential Site :: Potential Site	Sidewalk, Curb side : Cutout : Potential	1	Yes
10	1574 Jerrold Ave : Mendell St - 03rd St	Potential Site :: Potential Site	Sidewalk, Curb side : Cutout : Potential	1	Yes
10	1667 Jerrold Ave : 03rd St - Phelps St	Potential Site :: Potential Site	: : Potential	1	Yes
10	1639 Jerrold Ave : 03rd St - Phelps St	Potential Site :: Potential Site	: : Potential	1	Yes
10	1635 Jerrold Ave : 03rd St - Phelps St	Potential Site :: Potential Site	: : Potential	1	Yes
10	1619 Jerrold Ave : 03rd St - Phelps St	Potential Site :: Potential Site	: : Potential	1	Yes
10	1605 Jerrold Ave : 03rd St - Phelps St	Potential Site :: Potential Site	: : Potential	1	Yes
10	590 Keith St : Fairfax Ave - Bowman Ct	Potential Site :: Potential Site	Sidewalk, Curb side : Cutout : Potential	2	Yes
10	655 Keith St : Rebecca Ln - Hudson Ave	Potential Site :: Potential Site	Sidewalk, Curb side : Cutout : Potential	1	Yes
10	639 Keith St : Rebecca Ln - Hudson Ave	Potential Site :: Potential Site	Sidewalk, Curb side : Cutout : Potential	1	Yes
10	603 Keith St : Rebecca Ln - Hudson Ave	Potential Site :: Potential Site	Sidewalk, Curb side : Cutout : Potential	4	Yes
10	604 Keith St : Rebecca Ln - Hudson Ave	Potential Site :: Potential Site	Sidewalk, Curb side : Cutout : Potential	1	Yes
10	604 Keith St : Rebecca Ln - Hudson Ave	Potential Site :: Potential Site	Sidewalk, Curb side : Cutout : Potential	2	Yes
10	604 Keith St : Rebecca Ln - Hudson Ave	Potential Site :: Potential Site	Sidewalk, Curb side : Cutout : Potential	4	Yes
10	599 Keith St : Rebecca Ln - Hudson Ave	Stump :: Stump	Sidewalk, Curb side : Cutout : Empty	2	Yes
10	599 Keith St : Rebecca Ln - Hudson Ave	Planting Site (cut) :: Planting site (cut)	Sidewalk, Curb side : Cutout : Empty	6	Yes
10	604 Keith St : Rebecca Ln - Hudson Ave	Planting Site (cut) :: Planting site (cut)	Sidewalk, Curb side : Cutout : Empty	21	Yes
10	1447 Keith St : Oakdale Ave - Palou Ave	Potential Site :: Potential Site	Sidewalk, Curb side : Cutout : Potential	1	Yes
10	1447 Keith St : Oakdale Ave - Palou Ave	Potential Site :: Potential Site	Sidewalk, Curb side : Cutout : Potential	2	Yes
10	1701 Keith St : Revere Ave - Shafter Ave	Planting Site :: Planting site	Sidewalk, Curb side : Yard : Empty	1	Yes
10	1701 Keith St : Revere Ave - Shafter Ave	Planting Site :: Planting site	Sidewalk, Curb side : Yard : Empty	2	Yes
10	1701 Keith St : Revere Ave - Shafter Ave	Planting Site :: Planting site	Sidewalk, Curb side : Yard : Empty	3	Yes
10	962 Key Ave : Key Ave - Jennings St	Potential Site :: Potential Site	Sidewalk, Curb side : Cutout : Potential	1	No
10	966 Key Ave : Key Ave - Jennings St	Potential Site :: Potential Site	Sidewalk, Curb side : Cutout : Potential	1	No
10	955 Key Ave : Key Ave - Jennings St	Planting Site (cut) :: Planting site (cut)	Sidewalk, Curb side : Yard : Empty	1	No
10	1021 Key Ave : Jennings St - 03rd St	Planting Site (cut) :: Planting site (cut)	Sidewalk, Curb side : Yard : Empty	1	No
10	1610 Kirkwood Ave : Newhall St - Phelps St	Potential Site :: Potential Site	: : Potential	1	Yes
10	1620 Kirkwood Ave : Newhall St - Phelps St	Potential Site :: Potential Site	: : Potential	1	Yes
10	1628 Kirkwood Ave : Newhall St - Phelps St	Potential Site :: Potential Site	: : Potential	1	Yes
10	1634 Kirkwood Ave : Newhall St - Phelps St	Potential Site :: Potential Site	: : Potential	1	Yes

## Tree Planting Sites - FY24/25 Priority Sites for Prop L Funds

District	Location	PlantingSiteType	RequestType	Tree No.	In EPC?
10	1634 Kirkwood Ave : Newhall St - Phelps St	Potential Site :: Potential Site	: : Potential	2	Yes
10	1646 Kirkwood Ave : Newhall St - Phelps St	Potential Site :: Potential Site	: : Potential	1	Yes
10	1659 Kirkwood Ave : Newhall St - Phelps St	Potential Site :: Potential Site	: : Potential	1	Yes
10	1651 Kirkwood Ave : Newhall St - Phelps St	Potential Site :: Potential Site	: : Potential	1	Yes
10	1647 Kirkwood Ave : Newhall St - Phelps St	Potential Site :: Potential Site	: : Potential	1	Yes
10	1643 Kirkwood Ave : Newhall St - Phelps St	Potential Site :: Potential Site	: : Potential	1	Yes
10	1631 Kirkwood Ave : Newhall St - Phelps St	Potential Site :: Potential Site	: : Potential	1	Yes
10	1699 Kirkwood Ave : Newhall St - Phelps St	Potential Site :: Potential Site	: : Potential	2	Yes
10	1683 Kirkwood Ave : Newhall St - Phelps St	Potential Site :: Potential Site	: : Potential	1	Yes
10	1687 Kirkwood Ave : Newhall St - Phelps St	Potential Site :: Potential Site	: : Potential	1	Yes
10	1679 Kirkwood Ave : Newhall St - Phelps St	Potential Site :: Potential Site	: : Potential	1	Yes
10	1675 Kirkwood Ave : Newhall St - Phelps St	Potential Site :: Potential Site	: : Potential	1	Yes
10	1663 Kirkwood Ave : Newhall St - Phelps St	Potential Site :: Potential Site	: : Potential	1	Yes
10	1654 Kirkwood Ave : Newhall St - Phelps St	Potential Site :: Potential Site	: : Potential	1	Yes
10	1654 Kirkwood Ave : Newhall St - Phelps St	Potential Site :: Potential Site	: : Potential	2	Yes
10	1666 Kirkwood Ave : Newhall St - Phelps St	Potential Site :: Potential Site	: : Potential	1	Yes
10	1686 Kirkwood Ave : Newhall St - Phelps St	Potential Site :: Potential Site	: : Potential	1	Yes
10	1690 Kirkwood Ave : Newhall St - Phelps St	Potential Site :: Potential Site	: : Potential	1	Yes
10	1699 Kirkwood Ave : Newhall St - Phelps St	Potential Site :: Potential Site	: : Potential	1	Yes
10	90 Kiska Rd : Dormitory Rd - Ingalls St	Planting Site (cut) :: Planting site (cut)	Sidewalk, Property side : Yard : Empty	3	Yes
10	90 Kiska Rd : Dormitory Rd - Ingalls St	Planting Site (cut) :: Planting site (cut)	Sidewalk, Property side : Yard : Empty	4	Yes
10	1189 La Salle Ave : Ingalls St - Whitfield Ct	Potential Site :: Potential Site	Sidewalk, Curb side : Cutout : Potential	1	Yes
10	1196 La Salle Ave : Osceola Dr - Osceola Dr	Potential Site :: Potential Site	Sidewalk, Curb side : Cutout : Potential	20	Yes
10	1195 La Salle Ave : Osceola Dr - Osceola Dr	Planting Site (cut) :: Planting site (cut)	Sidewalk, Curb side : Cutout : Empty	18	Yes
10	1198 La Salle Ave : Garlington Ct - Newcomb Ave	Stump :: Stump	Sidewalk, Curb side : Cutout : Empty	7	Yes
10	1400x La Salle Ave : Las Villas Ct - Cashmere St	Stump :: Stump	Median : Cutout : Empty	21	Yes
10	1400x La Salle Ave : Las Villas Ct - Cashmere St	Stump :: Stump	Median : Cutout : Empty	36	Yes
10	1400X La Salle Ave : Newcomb Ave - Lindsay Cir	Planting Site (cut) :: Planting site (cut)	Sidewalk, Curb side : Cutout : Empty	10	Yes
10	1500X La Salle Ave : Cashmere St - Mendell St	California Fan Palm :: Washingtonia filifera	Median : Cutout : Empty	3	Yes
10	1548 La Salle Ave : Cashmere St - Mendell St	Potential Site :: Potential Site	Sidewalk, Curb side : Cutout : Potential	1	Yes
10	1600 La Salle Ave : Mendell St - 03rd St	Potential Site :: Potential Site	: : Potential	1	Yes
10	1616 La Salle Ave : Mendell St - 03rd St	Potential Site :: Potential Site	: : Potential	1	Yes
10	1650 La Salle Ave : Mendell St - 03rd St	Potential Site :: Potential Site	: : Potential	1	Yes
10	1650 La Salle Ave : Mendell St - 03rd St	Potential Site :: Potential Site	: : Potential	2	Yes
10	1600 La Salle Ave : Mendell St - 03rd St	Potential Site :: Potential Site	Sidewalk, Curb side : Cutout : Potential	1	Yes
10	1620 La Salle Ave : Mendell St - 03rd St	Potential Site :: Potential Site	Sidewalk, Curb side : Cutout : Potential	1	Yes
10	1650 La Salle Ave : Mendell St - 03rd St	Potential Site :: Potential Site	Sidewalk, Curb side : Cutout : Potential	1	Yes
10	1660 La Salle Ave : Mendell St - 03rd St	Planting Site :: Planting site	Sidewalk, Property side : Yard : Empty	1	Yes
10	1641 La Salle Ave : 03rd St - Newhall St	Potential Site :: Potential Site	Sidewalk, Curb side : Cutout : Potential	1	Yes
10	1698 La Salle Ave : 03rd St - Newhall St	Potential Site :: Potential Site	: : Potential	1	Yes
10	1698 La Salle Ave : 03rd St - Newhall St	Potential Site :: Potential Site	: : Potential	2	Yes
10	1698 La Salle Ave : 03rd St - Newhall St	Potential Site :: Potential Site	: : Potential	3	Yes
10	1698 La Salle Ave : 03rd St - Newhall St	Potential Site :: Potential Site	: : Potential	4	Yes
10	1751 La Salle Ave : Newhall St - Phelps St	Potential Site :: Potential Site	: : Potential	1	Yes
10	1707 La Salle Ave : Newhall St - Phelps St	Potential Site :: Potential Site	: : Potential	1	Yes
10	1702 La Salle Ave : Newhall St - Phelps St	Potential Site :: Potential Site	: : Potential	1	Yes
10	1704 La Salle Ave : Newhall St - Phelps St	Potential Site :: Potential Site	: : Potential	1	Yes
10	1732 La Salle Ave : Newhall St - Phelps St	Potential Site :: Potential Site	: : Potential	1	Yes
10	1750 La Salle Ave : Newhall St - Phelps St	Potential Site :: Potential Site	: : Potential	1	Yes
10	1772 La Salle Ave : Newhall St - Phelps St	Potential Site :: Potential Site	: : Potential	1	Yes
10	1782 La Salle Ave : Newhall St - Phelps St	Potential Site :: Potential Site	: : Potential	1	Yes
10	1790 La Salle Ave : Newhall St - Phelps St	Potential Site :: Potential Site	: : Potential	1	Yes
10	1791 La Salle Ave : Newhall St - Phelps St	Potential Site :: Potential Site	: : Potential	2	Yes
10	1771 La Salle Ave : Newhall St - Phelps St	Potential Site :: Potential Site	: : Potential	2	Yes
10	1731 La Salle Ave : Newhall St - Phelps St	Stump :: Stump	: : Empty	1	Yes
10	1 Lane St : Fairfax Ave - End: 01-49 Block	Planting Site (cut) :: Planting site (cut)	Sidewalk, Curb side : Cutout : Empty	27	Yes
10	1300X Lane St : Newcomb Ave - Oakdale Ave	Planting Site (pave) :: Planting site (pave)	Sidewalk, Property side : Cutout : Empty	5	Yes
10	1598 Lane St : Palou Ave - Quesada Ave	Planting Site :: Planting site	Sidewalk, Curb side : Cutout : Empty	4	Yes
10	199 Lathrop Ave : Tunnel Ave - Wheeler Ave	Potential Site :: Potential Site	Sidewalk, Curb side : Cutout : Potential	1	No
10	199 Lathrop Ave : Tunnel Ave - Wheeler Ave	Potential Site :: Potential Site	Sidewalk, Curb side : Cutout : Potential	2	No
10	101 Lathrop Ave : Tunnel Ave - Wheeler Ave	Potential Site :: Potential Site	Sidewalk, Curb side : Cutout : Potential	1	No
10	101 Lathrop Ave : Tunnel Ave - Wheeler Ave	Potential Site :: Potential Site	Sidewalk, Curb side : Cutout : Potential	2	No
10	101 Lathrop Ave : Tunnel Ave - Wheeler Ave	Potential Site :: Potential Site	Sidewalk, Curb side : Cutout : Potential	3	No
10	100 Lathrop Ave : Tunnel Ave - Wheeler Ave	Potential Site :: Potential Site	Sidewalk, Curb side : Cutout : Potential	1	No
10	106 Lathrop Ave : Tunnel Ave - Wheeler Ave	Potential Site :: Potential Site	Sidewalk, Curb side : Cutout : Potential	1	No
10	221 Lathrop Ave : Wheeler Ave - Peninsula Ave	Potential Site :: Potential Site	Sidewalk, Curb side : Cutout : Potential	1	No
10	201 Lathrop Ave : Wheeler Ave - Peninsula Ave	Potential Site :: Potential Site	Sidewalk, Curb side : Cutout : Potential	1	No
10	201 Lathrop Ave : Wheeler Ave - Peninsula Ave	Potential Site :: Potential Site	Sidewalk, Curb side : Cutout : Potential	2	No
10	208 Lathrop Ave : Wheeler Ave - Peninsula Ave	Potential Site :: Potential Site	Sidewalk, Curb side : Cutout : Potential	1	No
10	250 Lathrop Ave : Wheeler Ave - Peninsula Ave	Potential Site :: Potential Site	Sidewalk, Curb side : Cutout : Potential	1	No
10	250 Lathrop Ave : Wheeler Ave - Peninsula Ave	Potential Site :: Potential Site	Sidewalk, Curb side : Cutout : Potential	2	No
10	250 Lathrop Ave : Wheeler Ave - Peninsula Ave	Potential Site :: Potential Site	Sidewalk, Curb side : Cutout : Potential	3	No
10	300 Lathrop Ave : Peninsula Ave - Tocoloma Ave	Potential Site :: Potential Site	Sidewalk, Curb side : Cutout : Potential	4	No

## Tree Planting Sites - FY24/25 Priority Sites for Prop L Funds

District	Location	PlantingSiteType	RequestType	Tree No.	In EPC?
10	399 Lathrop Ave : Peninsula Ave - Tocoloma Ave	Potential Site :: Potential Site	Sidewalk, Curb side : Cutout : Potential	1	No
10	399 Lathrop Ave : Peninsula Ave - Tocoloma Ave	Potential Site :: Potential Site	Sidewalk, Curb side : Cutout : Potential	2	No
10	399 Lathrop Ave : Peninsula Ave - Tocoloma Ave	Potential Site :: Potential Site	Sidewalk, Curb side : Cutout : Potential	3	No
10	399 Lathrop Ave : Peninsula Ave - Tocoloma Ave	Potential Site :: Potential Site	Sidewalk, Curb side : Cutout : Potential	4	No
10	301 Lathrop Ave : Peninsula Ave - Tocoloma Ave	Potential Site :: Potential Site	Sidewalk, Curb side : Cutout : Potential	1	No
10	301 Lathrop Ave : Peninsula Ave - Tocoloma Ave	Potential Site :: Potential Site	Sidewalk, Curb side : Cutout : Potential	2	No
10	301 Lathrop Ave : Peninsula Ave - Tocoloma Ave	Potential Site :: Potential Site	Sidewalk, Curb side : Cutout : Potential	3	No
10	301 Lathrop Ave : Peninsula Ave - Tocoloma Ave	Potential Site :: Potential Site	Sidewalk, Curb side : Cutout : Potential	4	No
10	401 Lathrop Ave : Tocoloma Ave - Nueva Ave	Potential Site :: Potential Site	Sidewalk, Curb side : Cutout : Potential	1	No
10	527 Lathrop Ave : Nueva Ave - Gillette Ave	Potential Site :: Potential Site	Sidewalk, Curb side : Cutout : Potential	1	No
10	501 Lathrop Ave : Nueva Ave - Gillette Ave	Potential Site :: Potential Site	Sidewalk, Curb side : Cutout : Potential	1	No
10	501 Lathrop Ave : Nueva Ave - Gillette Ave	Potential Site :: Potential Site	Sidewalk, Curb side : Cutout : Potential	2	No
10	501 Lathrop Ave : Nueva Ave - Gillette Ave	Potential Site :: Potential Site	Sidewalk, Curb side : Cutout : Potential	3	No
10	501 Lathrop Ave : Nueva Ave - Gillette Ave	Potential Site :: Potential Site	Sidewalk, Curb side : Cutout : Potential	4	No
10	27 Latona St : Bay View Rd - Thornton Ave	Planting Site :: Planting site	Sidewalk, Curb side : Cutout : Empty	1	Yes
10	46 Latona St : Bay View Rd - Thornton Ave	Planting Site :: Planting site	: : Empty	1	Yes
10	1030 Le Conte Ave : Jennings St - 03rd St	Stump :: Stump	Sidewalk, Curb side : Cutout : Empty	1	No
10	1025 Le Conte Ave : Jennings St - 03rd St	Planting Site (cut) :: Planting site (cut)	Sidewalk, Curb side : Yard : Empty	1	No
10	11 Lillian St : Beatrice Ln - Rosie Lee Ln	Potential Site :: Potential Site	Sidewalk, Curb side : Cutout : Potential	1	Yes
10	2x Lucy St : Thornton Ave - Williams Ave	Planting Site :: Planting site	Sidewalk, Curb side : Cutout : Empty	2	Yes
10	60 Maddux Ave : Thomas Ave - Topeka Ave	Planting Site :: Planting site	Sidewalk, Property side : Yard : Empty	1	Yes
10	60 Maddux Ave : Thomas Ave - Topeka Ave	Planting Site :: Planting site	Sidewalk, Property side : Yard : Empty	2	Yes
10	50 Matthew Ct : Espanola St - End: 01-25 Block	Stump :: Stump	Sidewalk, Curb side : Cutout : Empty	2	Yes
10	1651 McKinnon Ave : 03rd St - Newhall St	Potential Site :: Potential Site	: : Potential	1	Yes
10	1649 McKinnon Ave : 03rd St - Newhall St	Potential Site :: Potential Site	: : Potential	1	Yes
10	1645 McKinnon Ave : 03rd St - Newhall St	Potential Site :: Potential Site	: : Potential	1	Yes
10	1641 McKinnon Ave : 03rd St - Newhall St	Potential Site :: Potential Site	: : Potential	1	Yes
10	1635 McKinnon Ave : 03rd St - Newhall St	Potential Site :: Potential Site	: : Potential	1	Yes
10	1635 McKinnon Ave : 03rd St - Newhall St	Potential Site :: Potential Site	: : Potential	2	Yes
10	1640 McKinnon Ave : 03rd St - Newhall St	Potential Site :: Potential Site	: : Potential	1	Yes
10	1640 McKinnon Ave : 03rd St - Newhall St	Potential Site :: Potential Site	: : Potential	2	Yes
10	1640 McKinnon Ave : 03rd St - Newhall St	Potential Site :: Potential Site	: : Potential	3	Yes
10	1684 McKinnon Ave : 03rd St - Newhall St	Potential Site :: Potential Site	: : Potential	1	Yes
10	1779 McKinnon Ave : Newhall St - Phelps St	Potential Site :: Potential Site	: : Potential	1	Yes
10	1727 McKinnon Ave : Newhall St - Phelps St	Potential Site :: Potential Site	: : Potential	1	Yes
10	1725 McKinnon Ave : Newhall St - Phelps St	Potential Site :: Potential Site	: : Potential	1	Yes
10	1723 McKinnon Ave : Newhall St - Phelps St	Potential Site :: Potential Site	: : Potential	1	Yes
10	1716 McKinnon Ave : Newhall St - Phelps St	Potential Site :: Potential Site	: : Potential	1	Yes
10	1701 McKinnon Ave : Newhall St - Phelps St	Potential Site :: Potential Site	: : Potential	1	Yes
10	1735 McKinnon Ave : Newhall St - Phelps St	Potential Site :: Potential Site	: : Potential	1	Yes
10	1719 McKinnon Ave : Newhall St - Phelps St	Potential Site :: Potential Site	: : Potential	1	Yes
10	1717 McKinnon Ave : Newhall St - Phelps St	Potential Site :: Potential Site	: : Potential	1	Yes
10	1713 McKinnon Ave : Newhall St - Phelps St	Potential Site :: Potential Site	: : Potential	1	Yes
10	1711 McKinnon Ave : Newhall St - Phelps St	Potential Site :: Potential Site	: : Potential	1	Yes
10	1709 McKinnon Ave : Newhall St - Phelps St	Potential Site :: Potential Site	: : Potential	1	Yes
10	1766 McKinnon Ave : Newhall St - Phelps St	Potential Site :: Potential Site	: : Potential	1	Yes
10	1774 McKinnon Ave : Newhall St - Phelps St	Potential Site :: Potential Site	: : Potential	1	Yes
10	1799 McKinnon Ave : Newhall St - Phelps St	Potential Site :: Potential Site	: : Potential	1	Yes
10	1779 McKinnon Ave : Newhall St - Phelps St	Potential Site :: Potential Site	: : Potential	1	Yes
10	1775 McKinnon Ave : Newhall St - Phelps St	Potential Site :: Potential Site	: : Potential	1	Yes
10	1773 McKinnon Ave : Newhall St - Phelps St	Potential Site :: Potential Site	: : Potential	1	Yes
10	1716 McKinnon Ave : Newhall St - Phelps St	Potential Site :: Potential Site	: : Potential	2	Yes
10	1724 McKinnon Ave : Newhall St - Phelps St	Potential Site :: Potential Site	: : Potential	1	Yes
10	1730 McKinnon Ave : Newhall St - Phelps St	Potential Site :: Potential Site	: : Potential	1	Yes
10	1746 McKinnon Ave : Newhall St - Phelps St	Potential Site :: Potential Site	: : Potential	1	Yes
10	1750 McKinnon Ave : Newhall St - Phelps St	Potential Site :: Potential Site	: : Potential	1	Yes
10	1756 McKinnon Ave : Newhall St - Phelps St	Potential Site :: Potential Site	: : Potential	1	Yes
10	918 Meade Ave : Jennings St - 03rd St	Potential Site :: Potential Site	Sidewalk, Curb side : Cutout : Potential	1	No
10	621 Mendell St : Fairfax Ave - Galvez Ave	Potential Site :: Potential Site	Sidewalk, Curb side : Cutout : Potential	3	Yes
10	1499M Mendell St : Oakdale Ave - 03rd St	Stump :: Stump	Median : Cutout : Empty	1	Yes
10	1499M Mendell St : Oakdale Ave - 03rd St	Stump :: Stump	Median : Cutout : Empty	2	Yes
10	1499M Mendell St : Oakdale Ave - 03rd St	Stump :: Stump	Median : Cutout : Empty	3	Yes
10	1499M Mendell St : Oakdale Ave - 03rd St	Stump :: Stump	Median : Cutout : Empty	4	Yes
10	1499M Mendell St : Oakdale Ave - 03rd St	Stump :: Stump	Median : Cutout : Empty	5	Yes
10	1 Middle Point Rd : Jennings St - West Point Rd	Planting Site :: Planting site	Sidewalk, Property side : Yard : Empty	3	Yes
10	1 Middle Point Rd : Jennings St - West Point Rd	Planting Site :: Planting site	Sidewalk, Property side : Yard : Empty	4	Yes
10	1 Middle Point Rd : Jennings St - West Point Rd	Planting Site :: Planting site	Sidewalk, Property side : Yard : Empty	6	Yes
10	1 Middle Point Rd : Jennings St - West Point Rd	Planting Site :: Planting site	Sidewalk, Property side : Yard : Empty	7	Yes
10	1 Middle Point Rd : Jennings St - West Point Rd	Planting Site :: Planting site	Sidewalk, Property side : Yard : Empty	8	Yes
10	1 Middle Point Rd : Jennings St - West Point Rd	Planting Site :: Planting site	Sidewalk, Property side : Yard : Empty	9	Yes
10	1 Middle Point Rd : Jennings St - West Point Rd	Planting Site :: Planting site	Sidewalk, Property side : Yard : Empty	1	Yes
10	1 Middle Point Rd : Jennings St - West Point Rd	Planting Site :: Planting site	Sidewalk, Property side : Yard : Empty	2	Yes
10	200x Middle Point Rd : Hare St - Ingalls St	Planting Site :: Planting site	Sidewalk, Curb side : Cutout : Empty	1	Yes

## Tree Planting Sites - FY24/25 Priority Sites for Prop L Funds

District	Location	PlantingSiteType	RequestType	Tree No.	In EPC?
10	8 Navy Rd : Griffith St - End: 1000-1099 Block	Stump :: Stump	Sidewalk, Curb side : Cutout : Empty	13	Yes
10	10 Neptune St : Thornton Ave - Williams Ave	Potential Site :: Potential Site	: : Potential	1	No
10	1301 Newcomb Ave : Whitney Young Cir - La Salle Ave	Planting Site (cut) :: Planting site (cut)	Sidewalk, Curb side : Cutout : Empty	1	Yes
10	1301 Newcomb Ave : Whitney Young Cir - La Salle Ave	Planting Site (cut) :: Planting site (cut)	Sidewalk, Curb side : Cutout : Empty	2	Yes
10	1301 Newcomb Ave : Whitney Young Cir - La Salle Ave	Planting Site (cut) :: Planting site (cut)	Sidewalk, Curb side : Cutout : Empty	5	Yes
10	1300x Newcomb Ave : La Salle Ave - Keith St	Stump :: Stump	Median : Cutout : Empty	5	Yes
10	1726 Newcomb Ave : Newhall St - Phelps St	Planting Site :: Planting site	Sidewalk, Curb side : Cutout : Empty	1	Yes
10	1756 Newcomb Ave : Newhall St - Phelps St	Planting Site :: Planting site	Sidewalk, Curb side : Cutout : Empty	1	Yes
10	1734 Newcomb Ave : Newhall St - Phelps St	Planting Site :: Planting site	Sidewalk, Curb side : Cutout : Empty	1	Yes
10	1783 Newcomb Ave : Newhall St - Phelps St	Planting Site :: Planting site	: : Empty	1	Yes
10	1775 Newcomb Ave : Newhall St - Phelps St	Planting Site :: Planting site	: : Empty	1	Yes
10	1747 Newcomb Ave : Newhall St - Phelps St	Planting Site :: Planting site	Sidewalk, Curb side : Yard : Empty	1	Yes
10	1710 Newcomb Ave : Newhall St - Phelps St	Planting Site :: Planting site	Sidewalk, Curb side : Yard : Empty	1	Yes
10	400X Newhall St : Evans Ave - Fairfax Ave	Planting Site :: Planting site	Sidewalk, Curb side : Cutout : Empty	5	No
10	595X Newhall St : Fairfax Ave - Galvez Ave	Planting Site (plant) :: Planting site (plant)	Sidewalk, Curb side : Cutout : Empty	1	Yes
10	501 Newhall St : Fairfax Ave - Galvez Ave	Potential Site :: Potential Site	: : Potential	4	Yes
10	702 Newhall St : Hudson Ave - Innes Ave	Potential Site :: Potential Site	Sidewalk, Curb side : Cutout : Potential	4	Yes
10	745 Newhall St : Hudson Ave - Innes Ave	Potential Site :: Potential Site	Sidewalk, Curb side : Cutout : Potential	1	Yes
10	715 Newhall St : Hudson Ave - Innes Ave	Potential Site :: Potential Site	Sidewalk, Curb side : Cutout : Potential	1	Yes
10	950 Newhall St : 03rd St - Kirkwood Ave	Potential Site :: Potential Site	: : Potential	1	Yes
10	950 Newhall St : 03rd St - Kirkwood Ave	Potential Site :: Potential Site	: : Potential	2	Yes
10	950 Newhall St : 03rd St - Kirkwood Ave	Potential Site :: Potential Site	: : Potential	3	Yes
10	1000 Newhall St : Kirkwood Ave - La Salle Ave	Potential Site :: Potential Site	: : Potential	1	Yes
10	1021 Newhall St : Kirkwood Ave - La Salle Ave	Planting Site :: Planting site	Sidewalk, Property side : Yard : Empty	1	Yes
10	1021 Newhall St : Kirkwood Ave - La Salle Ave	Planting Site :: Planting site	Sidewalk, Property side : Yard : Empty	2	Yes
10	1021 Newhall St : Kirkwood Ave - La Salle Ave	Planting Site :: Planting site	Sidewalk, Property side : Yard : Empty	3	Yes
10	1021 Newhall St : Kirkwood Ave - La Salle Ave	Planting Site :: Planting site	Sidewalk, Property side : Yard : Empty	4	Yes
10	1021 Newhall St : Kirkwood Ave - La Salle Ave	Planting Site :: Planting site	Sidewalk, Property side : Yard : Empty	5	Yes
10	1125X Newhall St : La Salle Ave - McKinnon Ave	Planting Site (pave) :: Planting site (pave)	Sidewalk, Curb side : Cutout : Empty	2	Yes
10	1100 Newhall St : La Salle Ave - McKinnon Ave	Planting Site (plant) :: Planting site (plant)	Sidewalk, Curb side : Cutout : Empty	2	Yes
10	1118 Newhall St : La Salle Ave - McKinnon Ave	Potential Site :: Potential Site	: : Potential	1	Yes
10	1124 Newhall St : La Salle Ave - McKinnon Ave	Potential Site :: Potential Site	: : Potential	1	Yes
10	1151 Newhall St : La Salle Ave - McKinnon Ave	Planting Site :: Planting site	: : Empty	5	Yes
10	1200 Newhall St : McKinnon Ave - Newcomb Ave	Potential Site :: Potential Site	: : Potential	3	Yes
10	1212 Newhall St : McKinnon Ave - Newcomb Ave	Potential Site :: Potential Site	: : Potential	1	Yes
10	1214 Newhall St : McKinnon Ave - Newcomb Ave	Potential Site :: Potential Site	: : Potential	1	Yes
10	1251 Newhall St : McKinnon Ave - Newcomb Ave	Potential Site :: Potential Site	: : Potential	3	Yes
10	1251 Newhall St : McKinnon Ave - Newcomb Ave	Potential Site :: Potential Site	: : Potential	4	Yes
10	1300 Newhall St : Newcomb Ave - Oakdale Ave	Potential Site :: Potential Site	: : Potential	1	Yes
10	1300 Newhall St : Newcomb Ave - Oakdale Ave	Potential Site :: Potential Site	: : Potential	2	Yes
10	1300 Newhall St : Newcomb Ave - Oakdale Ave	Potential Site :: Potential Site	: : Potential	3	Yes
10	1300 Newhall St : Newcomb Ave - Oakdale Ave	Potential Site :: Potential Site	: : Potential	4	Yes
10	1300 Newhall St : Newcomb Ave - Oakdale Ave	Potential Site :: Potential Site	: : Potential	5	Yes
10	1350 Newhall St : Newcomb Ave - Oakdale Ave	Potential Site :: Potential Site	: : Potential	1	Yes
10	1315 Newhall St : Newcomb Ave - Oakdale Ave	Potential Site :: Potential Site	: : Potential	1	Yes
10	1301 Newhall St : Newcomb Ave - Oakdale Ave	Potential Site :: Potential Site	: : Potential	1	Yes
10	1301 Newhall St : Newcomb Ave - Oakdale Ave	Potential Site :: Potential Site	: : Potential	2	Yes
10	1350 Newhall St : Newcomb Ave - Oakdale Ave	Potential Site :: Potential Site	: : Potential	2	Yes
10	1325 Newhall St : Newcomb Ave - Oakdale Ave	Potential Site :: Potential Site	: : Potential	1	Yes
10	1325 Newhall St : Newcomb Ave - Oakdale Ave	Potential Site :: Potential Site	: : Potential	2	Yes
10	1325 Newhall St : Newcomb Ave - Oakdale Ave	Potential Site :: Potential Site	: : Potential	3	Yes
10	1325 Newhall St : Newcomb Ave - Oakdale Ave	Potential Site :: Potential Site	: : Potential	4	Yes
10	1317 Newhall St : Newcomb Ave - Oakdale Ave	Potential Site :: Potential Site	: : Potential	1	Yes
10	1400 Newhall St : Oakdale Ave - Palou Ave	Potential Site :: Potential Site	: : Potential	3	Yes
10	1440 Newhall St : Oakdale Ave - Palou Ave	Potential Site :: Potential Site	: : Potential	1	Yes
10	1440 Newhall St : Oakdale Ave - Palou Ave	Potential Site :: Potential Site	: : Potential	2	Yes
10	1440 Newhall St : Oakdale Ave - Palou Ave	Potential Site :: Potential Site	: : Potential	3	Yes
10	1451 Newhall St : Oakdale Ave - Palou Ave	Potential Site :: Potential Site	: : Potential	1	Yes
10	1451 Newhall St : Oakdale Ave - Palou Ave	Potential Site :: Potential Site	: : Potential	2	Yes
10	1451 Newhall St : Oakdale Ave - Palou Ave	Potential Site :: Potential Site	: : Potential	3	Yes
10	1401 Newhall St : Oakdale Ave - Palou Ave	Potential Site :: Potential Site	: : Potential	1	Yes
10	1401 Newhall St : Oakdale Ave - Palou Ave	Potential Site :: Potential Site	: : Potential	2	Yes
10	1401 Newhall St : Oakdale Ave - Palou Ave	Potential Site :: Potential Site	: : Potential	3	Yes
10	1541 Newhall St : Palou Ave - Quesada Ave	Potential Site :: Potential Site	: : Potential	1	Yes
10	1500 Newhall St : Palou Ave - Quesada Ave	Planting Site :: Planting site	Sidewalk, Curb side : Yard : Empty	2	No
10	1500 Newhall St : Palou Ave - Quesada Ave	Planting Site :: Planting site	Sidewalk, Curb side : Yard : Empty	3	No
10	1500 Newhall St : Palou Ave - Quesada Ave	Planting Site :: Planting site	Sidewalk, Curb side : Yard : Empty	4	No
10	1500 Newhall St : Palou Ave - Quesada Ave	Planting Site :: Planting site	Sidewalk, Curb side : Yard : Empty	5	No
10	1533 Newhall St : Palou Ave - Quesada Ave	Potential Site :: Potential Site	: : Potential	1	Yes
10	1525 Newhall St : Palou Ave - Quesada Ave	Potential Site :: Potential Site	: : Potential	1	Yes
10	1501 Newhall St : Palou Ave - Quesada Ave	Potential Site :: Potential Site	: : Potential	1	Yes
10	1501 Newhall St : Palou Ave - Quesada Ave	Potential Site :: Potential Site	: : Potential	2	Yes
10	1501 Newhall St : Palou Ave - Quesada Ave	Potential Site :: Potential Site	: : Potential	3	Yes







## Tree Planting Sites - FY24/25 Priority Sites for Prop L Funds

District	Location	PlantingSiteType	RequestType	Tree No.	In EPC?
10	244 Peninsula Ave : Hester Ave - Blanken Ave	Potential Site :: Potential Site	Sidewalk, Curb side : Cutout : Potential	1	No
10	201 Peninsula Ave : Hester Ave - Blanken Ave	Planting Site :: Planting site	Sidewalk, Property side : Yard : Empty	1	No
10	359 Peninsula Ave : Blanken Ave - Lathrop Ave	Planting Site :: Planting site	Sidewalk, Curb side : Cutout : Empty	1	No
10	339 Peninsula Ave : Blanken Ave - Lathrop Ave	Potential Site :: Potential Site	Sidewalk, Curb side : Cutout : Potential	1	No
10	325 Peninsula Ave : Blanken Ave - Lathrop Ave	Potential Site :: Potential Site	Sidewalk, Curb side : Cutout : Potential	1	No
10	310 Peninsula Ave : Blanken Ave - Lathrop Ave	Potential Site :: Potential Site	Sidewalk, Curb side : Cutout : Potential	1	No
10	315 Peninsula Ave : Blanken Ave - Lathrop Ave	Planting Site :: Planting site	Sidewalk, Property side : Yard : Empty	2	No
10	322 Peninsula Ave : Blanken Ave - Lathrop Ave	Planting Site :: Planting site	Sidewalk, Curb side : Yard : Empty	1	No
10	328 Peninsula Ave : Blanken Ave - Lathrop Ave	Planting Site :: Planting site	Sidewalk, Property side : Yard : Empty	1	No
10	328 Peninsula Ave : Blanken Ave - Lathrop Ave	Planting Site :: Planting site	Sidewalk, Curb side : Yard : Empty	2	No
10	328 Peninsula Ave : Blanken Ave - Lathrop Ave	Planting Site :: Planting site	Sidewalk, Property side : Yard : Empty	3	No
10	328 Peninsula Ave : Blanken Ave - Lathrop Ave	Planting Site :: Planting site	Sidewalk, Curb side : Yard : Empty	4	No
10	430 Peninsula Ave : Lathrop Ave - End: 400-499 Block	Potential Site :: Potential Site	Sidewalk, Curb side : Cutout : Potential	1	No
10	430 Peninsula Ave : Lathrop Ave - End: 400-499 Block	Potential Site :: Potential Site	Sidewalk, Curb side : Cutout : Potential	2	No
10	436 Peninsula Ave : Lathrop Ave - End: 400-499 Block	Potential Site :: Potential Site	Sidewalk, Curb side : Cutout : Potential	1	No
10	448 Peninsula Ave : Lathrop Ave - End: 400-499 Block	Potential Site :: Potential Site	Sidewalk, Curb side : Cutout : Potential	1	No
10	454 Peninsula Ave : Lathrop Ave - End: 400-499 Block	Potential Site :: Potential Site	Sidewalk, Curb side : Cutout : Potential	1	No
10	455 Peninsula Ave : Lathrop Ave - End: 400-499 Block	Potential Site :: Potential Site	Sidewalk, Curb side : Cutout : Potential	1	No
10	951 Phelps St : Jerrold Ave - Kirkwood Ave	Potential Site :: Potential Site	: : Potential	3	Yes
10	901 Phelps St : Jerrold Ave - Kirkwood Ave	Potential Site :: Potential Site	: : Potential	1	Yes
10	901 Phelps St : Jerrold Ave - Kirkwood Ave	Planting Site :: Planting site	Sidewalk, Property side : Yard : Empty	2	Yes
10	1051 Phelps St : Kirkwood Ave - La Salle Ave	Potential Site :: Potential Site	: : Potential	1	Yes
10	1051 Phelps St : Kirkwood Ave - La Salle Ave	Potential Site :: Potential Site	: : Potential	2	Yes
10	1025 Phelps St : Kirkwood Ave - La Salle Ave	Potential Site :: Potential Site	: : Potential	1	Yes
10	1017 Phelps St : Kirkwood Ave - La Salle Ave	Potential Site :: Potential Site	: : Potential	1	Yes
10	1001 Phelps St : Kirkwood Ave - La Salle Ave	Potential Site :: Potential Site	: : Potential	1	Yes
10	1001 Phelps St : Kirkwood Ave - La Salle Ave	Potential Site :: Potential Site	: : Potential	2	Yes
10	1145 Phelps St : La Salle Ave - McKinnon Ave	Potential Site :: Potential Site	: : Potential	1	Yes
10	1135 Phelps St : La Salle Ave - McKinnon Ave	Potential Site :: Potential Site	: : Potential	1	Yes
10	1135 Phelps St : La Salle Ave - McKinnon Ave	Potential Site :: Potential Site	: : Potential	2	Yes
10	1251 Phelps St : McKinnon Ave - Newcomb Ave	Potential Site :: Potential Site	: : Potential	1	Yes
10	1251 Phelps St : McKinnon Ave - Newcomb Ave	Potential Site :: Potential Site	: : Potential	2	Yes
10	1201 Phelps St : McKinnon Ave - Newcomb Ave	Potential Site :: Potential Site	: : Potential	1	Yes
10	1201 Phelps St : McKinnon Ave - Newcomb Ave	Potential Site :: Potential Site	: : Potential	2	Yes
10	1349 Phelps St : Newcomb Ave - Oakdale Ave	Potential Site :: Potential Site	: : Potential	1	Yes
10	1325 Phelps St : Newcomb Ave - Oakdale Ave	Potential Site :: Potential Site	: : Potential	1	Yes
10	1301 Phelps St : Newcomb Ave - Oakdale Ave	Potential Site :: Potential Site	: : Potential	1	Yes
10	1301 Phelps St : Newcomb Ave - Oakdale Ave	Potential Site :: Potential Site	: : Potential	2	Yes
10	1400 Phelps St : Oakdale Ave - Palou Ave	Potential Site :: Potential Site	: : Potential	1	Yes
10	1400 Phelps St : Oakdale Ave - Palou Ave	Potential Site :: Potential Site	: : Potential	2	Yes
10	1400 Phelps St : Oakdale Ave - Palou Ave	Potential Site :: Potential Site	Sidewalk, Property side : Yard : Potential	3	Yes
10	1470 Phelps St : Oakdale Ave - Palou Ave	Potential Site :: Potential Site	: : Potential	2	Yes
10	1443 Phelps St : Oakdale Ave - Palou Ave	Potential Site :: Potential Site	: : Potential	1	Yes
10	1443 Phelps St : Oakdale Ave - Palou Ave	Potential Site :: Potential Site	: : Potential	2	Yes
10	1401 Phelps St : Oakdale Ave - Palou Ave	Potential Site :: Potential Site	: : Potential	1	Yes
10	1401 Phelps St : Oakdale Ave - Palou Ave	Potential Site :: Potential Site	: : Potential	2	Yes
10	2 Progress St : Whitney Young Cir - End: 01-99 Block	Planting Site (cut) :: Planting site (cut)	Sidewalk, Curb side : Yard : Empty	2	Yes
10	1618 Quesada Ave : Lane St - 03rd St	Planting Site (plant) :: Planting site (plant)	Sidewalk, Curb side : Cutout : Empty	1	Yes
10	1700X Quesada Ave : 03rd St - Newhall St	Planting Site :: Planting site	Median : Cutout : Empty	13	Yes
10	1700x Quesada Ave : 03rd St - Newhall St	Stump :: Stump	Median : Yard : Empty	45	Yes
10	1980 Quesada Ave : Quesada Ave - Quint St	Planting Site :: Planting site	Sidewalk, Curb side : Cutout : Empty	1	No
10	1546x Quint St : Silver Ave - Quesada Ave	Potential Site :: Potential Site	Sidewalk, Curb side : Cutout : Tree	1	Yes
10	27 Reddy St : Thornton Ave - Williams Ave	Planting Site :: Planting site	: : Empty	1	Yes
10	1270 Revere Ave : Hawes St - Ingalls St	Planting Site :: Planting site	Sidewalk, Curb side : Cutout : Empty	1	Yes
10	1777 Revere Ave : 03rd St - Newhall St	Planting Site :: Planting site	Sidewalk, Curb side : Cutout : Empty	1	Yes
10	1753 Revere Ave : 03rd St - Newhall St	Potential Site :: Potential Site	: : Potential	1	Yes
10	1743 Revere Ave : 03rd St - Newhall St	Potential Site :: Potential Site	: : Potential	1	Yes
10	1700 Revere Ave : 03rd St - Newhall St	Potential Site :: Potential Site	: : Potential	1	Yes
10	1746 Revere Ave : 03rd St - Newhall St	Potential Site :: Potential Site	: : Potential	1	Yes
10	1760 Revere Ave : 03rd St - Newhall St	Potential Site :: Potential Site	: : Potential	1	Yes
10	1774 Revere Ave : 03rd St - Newhall St	Potential Site :: Potential Site	: : Potential	1	Yes
10	1719 Revere Ave : 03rd St - Newhall St	Planting Site :: Planting site	Sidewalk, Curb side : Yard : Empty	1	Yes
10	1791 Revere Ave : 03rd St - Newhall St	Planting Site :: Planting site	: : Empty	2	Yes
10	1700 Revere Ave : 03rd St - Newhall St	Planting Site :: Planting site	: : Empty	6	Yes
10	1788 Revere Ave : 03rd St - Newhall St	Planting Site :: Planting site	Sidewalk, Curb side : Yard : Empty	1	Yes
10	195 Scotia Ave : Maddux Ave - Thornton Ave	Potential Site :: Potential Site	: : Potential	1	No
10	195 Scotia Ave : Maddux Ave - Thornton Ave	Potential Site :: Potential Site	: : Potential	2	No
10	195 Scotia Ave : Maddux Ave - Thornton Ave	Potential Site :: Potential Site	: : Potential	3	No
10	1345 Shafter Ave : Ingalls St - Jennings St	Stump :: Stump	Sidewalk, Curb side : Cutout : Empty	1	Yes
10	31 Thornton Ave : Latona St - Lucy St	Planting Site :: Planting site	: : Empty	1	Yes
10	241@ BLANKEN Tocoloma Ave : Start: 100-299 Block - Blanken Ave	Planting Site :: Planting site	Sidewalk, Curb side : Cutout : Empty	1	No
10	251 Tocoloma Ave : Start: 100-299 Block - Blanken Ave	Planting Site :: Planting site	Sidewalk, Curb side : Cutout : Empty	1	No



## Tree Planting Sites - FY24/25 Priority Sites for Prop L Funds

District	Location	PlantingSiteType	RequestType	Tree No.	In EPC?
10	200 Tunnel Ave : Visitacion Ave - Recycle Rd	Potential Site :: Potential Site	Sidewalk, Curb side : Cutout : Potential	8	No
10	200 Tunnel Ave : Visitacion Ave - Recycle Rd	Potential Site :: Potential Site	Sidewalk, Curb side : Cutout : Potential	9	No
10	200 Tunnel Ave : Visitacion Ave - Recycle Rd	Potential Site :: Potential Site	Sidewalk, Curb side : Cutout : Potential	10	No
10	200 Tunnel Ave : Visitacion Ave - Recycle Rd	Potential Site :: Potential Site	Sidewalk, Curb side : Cutout : Potential	11	No
10	200 Tunnel Ave : Recycle Rd - End: 481-498 Block	Potential Site :: Potential Site	Sidewalk, Curb side : Cutout : Potential	12	No
10	200 Tunnel Ave : Recycle Rd - End: 481-498 Block	Potential Site :: Potential Site	Sidewalk, Curb side : Cutout : Potential	13	No
10	1463 Van Dyke Ave : Jennings St - Keith St	Stump :: Stump	Sidewalk, Curb side : Cutout : Empty	1	Yes
10	1599 Van Dyke Ave : Keith St - Lane St	Planting Site :: Planting site	Sidewalk, Property side : Yard : Empty	2	Yes
10	1599 Van Dyke Ave : Keith St - Lane St	Planting Site :: Planting site	Sidewalk, Property side : Yard : Empty	3	Yes
10	1599 Van Dyke Ave : Lane St - 03rd St	Planting Site :: Planting site	Sidewalk, Property side : Yard : Empty	1	Yes
10	198x Venus St : Thornton Ave - Williams Ave	Planting Site (pave) :: Planting site (pave)	Sidewalk, Curb side : Cutout : Empty	5	No
10	1 Vesta St : Thornton Ave - Phelps St	Potential Site :: Potential Site	: : Potential	3	Yes
10	1 Vesta St : Thornton Ave - Phelps St	Potential Site :: Potential Site	: : Potential	1	Yes
10	1 Vesta St : Thornton Ave - Phelps St	Potential Site :: Potential Site	: : Potential	2	Yes
10	400 Visitacion Ave : Start: 400-499 Block - Bay Shore Blvd	Potential Site :: Potential Site	Sidewalk, Curb side : Cutout : Potential	1	No
10	1651 Wallace Ave : Keith St - 03rd St	Planting Site :: Planting site	Sidewalk, Property side : Yard : Empty	1	Yes
10	1651 Wallace Ave : Keith St - 03rd St	Planting Site :: Planting site	Sidewalk, Property side : Yard : Empty	2	Yes
10	1651 Wallace Ave : Keith St - 03rd St	Planting Site :: Planting site	Sidewalk, Property side : Yard : Empty	3	Yes
10	1651 Wallace Ave : Keith St - 03rd St	Planting Site :: Planting site	Sidewalk, Property side : Yard : Empty	4	Yes
10	1651 Wallace Ave : Keith St - 03rd St	Planting Site :: Planting site	Sidewalk, Property side : Yard : Empty	5	Yes
10	1651 Wallace Ave : Keith St - 03rd St	Planting Site :: Planting site	Sidewalk, Property side : Yard : Empty	6	Yes
10	1 Westbrook Ct : Start: 01-99 Block - Hudson Ave	Potential Site :: Potential Site	Sidewalk, Curb side : Cutout : Potential	26	Yes
10	291 Wheeler Ave : Hester Ave - Blanken Ave	Potential Site :: Potential Site	Sidewalk, Curb side : Cutout : Potential	1	No
10	245 Wheeler Ave : Hester Ave - Blanken Ave	Potential Site :: Potential Site	Sidewalk, Curb side : Cutout : Potential	1	No
10	235 Wheeler Ave : Hester Ave - Blanken Ave	Potential Site :: Potential Site	Sidewalk, Curb side : Cutout : Potential	1	No
10	211 Wheeler Ave : Hester Ave - Blanken Ave	Potential Site :: Potential Site	Sidewalk, Curb side : Cutout : Potential	1	No
10	201 Wheeler Ave : Hester Ave - Blanken Ave	Potential Site :: Potential Site	Sidewalk, Curb side : Cutout : Potential	1	No
10	206 Wheeler Ave : Hester Ave - Blanken Ave	Potential Site :: Potential Site	Sidewalk, Curb side : Cutout : Potential	1	No
10	278 Wheeler Ave : Hester Ave - Blanken Ave	Potential Site :: Potential Site	Sidewalk, Curb side : Cutout : Potential	1	No
10	284 Wheeler Ave : Hester Ave - Blanken Ave	Potential Site :: Potential Site	Sidewalk, Curb side : Cutout : Potential	1	No
10	218 Wheeler Ave : Hester Ave - Blanken Ave	Potential Site :: Potential Site	Sidewalk, Curb side : Cutout : Potential	1	No
10	244 Wheeler Ave : Hester Ave - Blanken Ave	Potential Site :: Potential Site	Sidewalk, Curb side : Cutout : Potential	1	No
10	248 Wheeler Ave : Hester Ave - Blanken Ave	Potential Site :: Potential Site	Sidewalk, Curb side : Cutout : Potential	1	No
10	260 Wheeler Ave : Hester Ave - Blanken Ave	Potential Site :: Potential Site	Sidewalk, Curb side : Cutout : Potential	1	No
10	266 Wheeler Ave : Hester Ave - Blanken Ave	Potential Site :: Potential Site	Sidewalk, Curb side : Cutout : Potential	1	No
10	272 Wheeler Ave : Hester Ave - Blanken Ave	Potential Site :: Potential Site	Sidewalk, Curb side : Cutout : Potential	1	No
10	356 Wheeler Ave : Blanken Ave - Lathrop Ave	Planting Site :: Planting site	Sidewalk, Curb side : Cutout : Empty	1	No
10	375 Wheeler Ave : Blanken Ave - Lathrop Ave	Potential Site :: Potential Site	Sidewalk, Curb side : Cutout : Potential	1	No
10	367 Wheeler Ave : Blanken Ave - Lathrop Ave	Potential Site :: Potential Site	Sidewalk, Curb side : Cutout : Potential	1	No
10	351 Wheeler Ave : Blanken Ave - Lathrop Ave	Potential Site :: Potential Site	Sidewalk, Curb side : Cutout : Potential	1	No
10	343 Wheeler Ave : Blanken Ave - Lathrop Ave	Potential Site :: Potential Site	Sidewalk, Curb side : Cutout : Potential	1	No
10	335 Wheeler Ave : Blanken Ave - Lathrop Ave	Potential Site :: Potential Site	Sidewalk, Curb side : Cutout : Potential	1	No
10	315 Wheeler Ave : Blanken Ave - Lathrop Ave	Potential Site :: Potential Site	Sidewalk, Curb side : Cutout : Potential	1	No
10	307 Wheeler Ave : Blanken Ave - Lathrop Ave	Potential Site :: Potential Site	Sidewalk, Curb side : Cutout : Potential	1	No
10	336 Wheeler Ave : Blanken Ave - Lathrop Ave	Potential Site :: Potential Site	Sidewalk, Curb side : Cutout : Potential	1	No
10	445 Wheeler Ave : Lathrop Ave - End: 400-499 Block	Planting Site :: Planting site	Sidewalk, Curb side : Cutout : Empty	1	No
10	439 Wheeler Ave : Lathrop Ave - End: 400-499 Block	Planting Site :: Planting site	Sidewalk, Curb side : Cutout : Empty	1	No
10	457 Wheeler Ave : Lathrop Ave - End: 400-499 Block	Stump :: Stump	Sidewalk, Curb side : Cutout : Empty	1	No
10	463 Wheeler Ave : Lathrop Ave - End: 400-499 Block	Potential Site :: Potential Site	Sidewalk, Curb side : Cutout : Potential	1	No
10	445 Wheeler Ave : Lathrop Ave - End: 400-499 Block	Stump :: Stump	Sidewalk, Curb side : Yard : Empty	3	No
10	463 Wheeler Ave : Lathrop Ave - End: 400-499 Block	Planting Site :: Planting site	Sidewalk, Property side : Yard : Empty	2	No
10	457 Wheeler Ave : Lathrop Ave - End: 400-499 Block	Planting Site :: Planting site	Sidewalk, Property side : Yard : Empty	2	No
10	457 Wheeler Ave : Lathrop Ave - End: 400-499 Block	Planting Site :: Planting site	Sidewalk, Property side : Yard : Empty	3	No
10	445 Wheeler Ave : Lathrop Ave - End: 400-499 Block	Planting Site :: Planting site	Sidewalk, Property side : Yard : Empty	2	No
10	439 Wheeler Ave : Lathrop Ave - End: 400-499 Block	Planting Site :: Planting site	Sidewalk, Property side : Yard : Empty	2	No
10	123 Whitney Young Cir : Richards Ct - Lindsay Cir	Planting Site (cut) :: Planting site (cut)	Sidewalk, Curb side : Cutout : Empty	5	Yes
10	119 Whitney Young Cir : Lindsay Cir - Hawkins Ln	Potential Site :: Potential Site	Sidewalk, Curb side : Cutout : Potential	3	Yes
10	102 Whitney Young Cir : Hawkins Ln - Bell Ct	Stump :: Stump	Sidewalk, Curb side : Cutout : Empty	11	Yes
10	80X Whitney Young Cir : Newcomb Ave - Progress St	Planting Site (cut) :: Planting site (cut)	Sidewalk, Curb side : Cutout : Empty	1	Yes
10	82 Whitney Young Cir : Newcomb Ave - Progress St	Planting Site (cut) :: Planting site (cut)	Sidewalk, Curb side : Cutout : Empty	1	Yes
10	65 Whitney Young Cir : Newcomb Ave - Progress St	Planting Site (cut) :: Planting site (cut)	Sidewalk, Curb side : Cutout : Empty	6	Yes
10	78 Whitney Young Cir : Newcomb Ave - Progress St	Planting Site (cut) :: Planting site (cut)	Sidewalk, Curb side : Cutout : Empty	1	Yes
10	50 Whitney Young Cir : Progress St - Hudson Ave	Potential Site :: Potential Site	Sidewalk, Curb side : Cutout : Potential	1	Yes
10	58 Williams Ave : Lucy St - Ceres St	Planting Site :: Planting site	Sidewalk, Curb side : Cutout : Empty	1	Yes
10	1698 Yosemite Ave : Keith St - 03rd St	Planting Site :: Planting site	Sidewalk, Property side : Yard : Empty	1	Yes
10	1698 Yosemite Ave : Keith St - 03rd St	Planting Site :: Planting site	Sidewalk, Property side : Yard : Empty	2	Yes
10	1698 Yosemite Ave : Keith St - 03rd St	Planting Site :: Planting site	Sidewalk, Property side : Yard : Empty	3	Yes
10	300 CATALINA ST: END: WEST - FAIRFAX AVE	Stump :: Stump	Sidewalk, Curb side : Yard : Empty	4	Yes
10	12 IRONWOOD WAY: CATALINA ST - ACACIA AVE	Stump :: Stump	Sidewalk, Curb side : Cutout : Empty	2	Yes
10	301 FRIEDEL ST: JERROLD AVE - KIRKWOOD AVE	Planting Site :: Planting site	: : Empty	1	Yes
10	301 FRIEDEL ST: JERROLD AVE - KIRKWOOD AVE	Planting Site :: Planting site	: : Empty	2	Yes
10	301 FRIEDEL ST: JERROLD AVE - KIRKWOOD AVE	Planting Site :: Planting site	: : Empty	3	Yes
10	301 FRIEDEL ST: JERROLD AVE - KIRKWOOD AVE	Planting Site :: Planting site	: : Empty	4	Yes

## Tree Planting Sites - FY24/25 Priority Sites for Prop L Funds

District	Location	PlantingSiteType	RequestType	Tree No.	In EPC?
10	301 FRIEDEL ST: JERROLD AVE - KIRKWOOD AVE	Planting Site :: Planting site	: : Empty	5	Yes
10	401 Galvez Ave : Donahue St - Robinson St	Planting Site :: Planting site	Sidewalk, Curb side : Yard : Empty	2	Yes
10	401 Galvez Ave : Donahue St - Robinson St	Planting Site :: Planting site	Sidewalk, Curb side : Yard : Empty	4	Yes
10	401 Galvez Ave : Donahue St - Robinson St	Planting Site :: Planting site	Sidewalk, Curb side : Yard : Empty	5	Yes
10	401 Galvez Ave : Donahue St - Robinson St	Planting Site :: Planting site	: : Empty	6	Yes
10	401 Galvez Ave : Donahue St - Robinson St	Planting Site :: Planting site	: : Empty	8	Yes
10	401 Galvez Ave : Donahue St - Robinson St	Planting Site :: Planting site	Sidewalk, Curb side : Yard : Empty	10	Yes
10	401 Galvez Ave : Donahue St - Robinson St	Planting Site :: Planting site	Sidewalk, Curb side : Yard : Empty	11	Yes
10	401 Galvez Ave : Donahue St - Robinson St	Potential Site :: Potential Site	Sidewalk, Curb side : Cutout : Potential	14	Yes
10	601 Innes Ave : Donahue St - Earl St	Planting Site :: Planting site	Sidewalk, Property side : Yard : Empty	15	Yes
10	601 Innes Ave : Donahue St - Earl St	Planting Site :: Planting site	Sidewalk, Property side : Yard : Empty	16	Yes
10	601 Innes Ave : Donahue St - Earl St	Planting Site :: Planting site	Sidewalk, Property side : Yard : Empty	17	Yes
10	98 KIRKWOOD AVE: FRIEDEL ST - DONAHUE ST	Planting Site :: Planting site	: : Empty	1	Yes
10	99 KIRKWOOD AVE: FRIEDEL ST - DONAHUE ST	Planting Site :: Planting site	: : Empty	2	Yes
10	599 INNES AVE: FRIEDEL ST - DONAHUE ST	Planting Site :: Planting site	Sidewalk, Curb side : Yard : Empty	1	Yes
10	82 Lois Ln : Bay Shore Blvd - Hester Ave	Planting Site :: Planting site	Sidewalk, Curb side : Cutout : Empty	1	No
10	72 Lois Ln : Bay Shore Blvd - Hester Ave	Planting Site :: Planting site	Sidewalk, Curb side : Cutout : Empty	1	No
10	63 Lois Ln : Bay Shore Blvd - Hester Ave	Planting Site :: Planting site	Sidewalk, Curb side : Cutout : Empty	2	No

[ this page intentionally left blank ]

# San Francisco County Transportation Authority Allocation Request Form

<b>FY of Allocation Action:</b>	FY2024/25
<b>Project Name:</b>	Neighborhood Transportation Program Coordination
<b>Primary Sponsor:</b>	San Francisco County Transportation Authority

**EXPENDITURE PLAN INFORMATION**

<b>PROP L Expenditure Plans</b>	Neighborhood Transportation Program
<b>Current PROP L Request:</b>	\$100,000
<b>Supervisory District</b>	Citywide

**REQUEST**

**Brief Project Description**

The Transportation Authority’s Neighborhood Program (NTP) funds planning, development, and implementation of community-based, neighborhood-scale transportation improvements. This request provides support for a NTP Coordinator role at the Transportation Authority to support Transportation Authority Board members’ efforts to identify potential NTP projects, to develop proposed scope, schedule, budget and funding to support allocation requests, and to conduct project delivery oversight.

**Detailed Scope, Project Benefits and Community Outreach**

The requested Prop L funds will enable Transportation Authority staff to work with district supervisor offices, implementing agencies, and community stakeholders to support Transportation Authority Board members’ efforts to identify potential NTP projects and to develop proposed scope, schedule, budget and funding information to support allocation of NTP grants, as well as project delivery oversight. It also includes ongoing support of the NTP including regular communications with the district supervisors’ offices regarding progress on NTP projects.

The NTP Guidelines are attached and provide additional detail on how NTP projects are identified and developed in collaboration between SFCTA, SFMTA, and District Supervisors. A list of previously funded NTP projects is also attached.

**Project Location**

Citywide

<b>Is this project in an Equity Priority Community?</b>	Yes
<b>Does this project benefit disadvantaged populations?</b>	Yes

**Project Phase(s)**

Planning/Conceptual Engineering (PLAN)

## 5YPP/STRATEGIC PLAN INFORMATION

<b>Type of Project in the Prop L 5YPP/Prop AA Strategic Plan?</b>	Project Drawn from Placeholder
<b>Is requested amount greater than the amount programmed in the relevant 5YPP or Strategic Plan?</b>	Less than or Equal to Programmed Amount
<b>PROP L Amount</b>	\$200,000.00



# San Francisco County Transportation Authority Allocation Request Form

<b>FY of Allocation Action:</b>	FY2024/25
<b>Project Name:</b>	Neighborhood Transportation Program Coordination
<b>Primary Sponsor:</b>	San Francisco County Transportation Authority

## ENVIRONMENTAL CLEARANCE

<b>Environmental Type:</b>	Categorically Exempt
----------------------------	----------------------

## PROJECT DELIVERY MILESTONES

Phase	Start		End	
	Quarter	Calendar Year	Quarter	Calendar Year
Planning/Conceptual Engineering (PLAN)	Jul-Aug-Sep	2024	Apr-May-Jun	2025
Environmental Studies (PA&ED)				
Right of Way				
Design Engineering (PS&E)				
Advertise Construction				
Start Construction (e.g. Award Contract)				
Operations (OP)				
Open for Use				
Project Completion (means last eligible expenditure)				

## SCHEDULE DETAILS

# San Francisco County Transportation Authority Allocation Request Form

<b>FY of Allocation Action:</b>	FY2024/25
<b>Project Name:</b>	Neighborhood Transportation Program Coordination
<b>Primary Sponsor:</b>	San Francisco County Transportation Authority

## FUNDING PLAN - FOR CURRENT REQUEST

Fund Source	Planned	Programmed	Allocated	Project Total
EP-225: Neighborhood Transportation Program	\$0	\$100,000	\$0	\$100,000
<b>Phases In Current Request Total:</b>	<b>\$0</b>	<b>\$100,000</b>	<b>\$0</b>	<b>\$100,000</b>

## COST SUMMARY

Phase	Total Cost	PROP L - Current Request	Source of Cost Estimate
Planning/Conceptual Engineering	\$100,000	\$100,000	Previous work of similar scope
Environmental Studies	\$0		
Right of Way	\$0		
Design Engineering	\$0		
Construction	\$0		
Operations	\$0		
Total:	\$100,000	\$100,000	

<b>% Complete of Design:</b>	N/A
<b>As of Date:</b>	N/A
<b>Expected Useful Life:</b>	N/A

# San Francisco County Transportation Authority

## Prop L/Prop AA/Prop D TNC Allocation Request Form

### MAJOR LINE ITEM BUDGET

#### BUDGET SUMMARY

Agency	Program Support	Total
SFCTA	\$ 100,000	\$ 100,000
<b>Total</b>	<b>\$ 100,000</b>	<b>\$ 100,000</b>

#### DETAILED LABOR COST ESTIMATE - BY AGENCY

SFCTA	Hours	Base Hourly Rate	Overhead Multiplier	Fully Burdened Hourly Cost	FTE	Total
Deputy Director	120	\$ 106.56	\$ 2.42	\$ 257.58	0.06	\$ 30,910
Senior Engineer	20	\$ 78.26	\$ 2.42	\$ 189.17	0.01	\$ 3,783
Program Analyst	30	\$ 48.30	\$ 2.42	\$ 116.74	0.01	\$ 3,502
Principal Transp. Planner	150	\$ 77.85	\$ 2.42	\$ 188.16	0.07	\$ 28,224
Senior Transp. Planner	70	\$ 67.12	\$ 2.42	\$ 162.25	0.03	\$ 11,358
Transportation Planner	100	\$ 57.88	\$ 2.42	\$ 139.90	0.05	\$ 13,990
Intern	120	\$ 28.00	\$ 2.42	\$ 67.68	0.06	\$ 8,122
<b>Total</b>	<b>610</b>				<b>0.29</b>	<b>\$ 99,888</b>

# San Francisco County Transportation Authority Allocation Request Form

<b>FY of Allocation Action:</b>	FY2024/25
<b>Project Name:</b>	Neighborhood Transportation Program Coordination
<b>Primary Sponsor:</b>	San Francisco County Transportation Authority

## SFCTA RECOMMENDATION

<b>Resolution Number:</b>		<b>Resolution Date:</b>	
<b>Total PROP L Requested:</b>	\$100,000	<b>Total PROP L Recommended</b>	\$100,000

<b>SGA Project Number:</b>		<b>Name:</b>	Neighborhood Transportation Program Coordination
<b>Sponsor:</b>	San Francisco County Transportation Authority	<b>Expiration Date:</b>	12/31/2025
<b>Phase:</b>	Planning/Conceptual Engineering	<b>Fundshare:</b>	100.0%

### Cash Flow Distribution Schedule by Fiscal Year

Fund Source	FY2024/25	Total
PROP L EP-225	\$100,000	\$100,000

### Deliverables

1. Quarterly progress reports shall report on work performed for each supervisorial district as well as general program support and coordination.

Metric	PROP AA	TNC TAX	PROP L
Actual Leveraging - Current Request	No PROP AA	No TNC TAX	0.0%
Actual Leveraging - This Project	No PROP AA	No TNC TAX	0.0%

# San Francisco County Transportation Authority Allocation Request Form

<b>FY of Allocation Action:</b>	FY2024/25
<b>Project Name:</b>	Neighborhood Transportation Program Coordination
<b>Primary Sponsor:</b>	San Francisco County Transportation Authority

## EXPENDITURE PLAN SUMMARY

<b>Current PROP L Request:</b>	\$100,000
--------------------------------	-----------

- 1) The requested sales tax and/or vehicle registration fee revenues will be used to supplement and under no circumstance replace existing local revenues used for transportation purposes.

Initials of sponsor staff member verifying the above statement:

MP

## CONTACT INFORMATION

	Project Manager	Grants Manager
<b>Name:</b>	Mike Pickford	Mike Pickford
<b>Title:</b>	Principal Transportation Planner	Principal Transportation Planner
<b>Phone:</b>	(415) 522-4822	(415) 522-4822
<b>Email:</b>	mike.pickford@sfcta.org	mike.pickford@sfcta.org

**Neighborhood Transportation Program (NTP)  
Project Status as of 5/22/2024**

**Planning Projects - Prop L Cycle 1**

<b>District</b>	<b>Project Name</b>	<b>Lead Agency</b>	<b>NTIP Amount Allocated</b>	<b>Year of Allocation</b>	<b>Year Completed</b>
3	Walter U Lum Place Public Space Study	SFCTA	\$350,000	23/24	Underway
7	Inner Sunset Multimodal Safety and Access Study	SFCTA	\$350,000	23/24	Underway

**Neighborhood Transportation Program (NTP)  
Project Status as of 5/22/2024**

**Planning Projects - Prop K NTIP Cycle 2**

<b>District</b>	<b>Project Name</b>	<b>Lead Agency</b>	<b>NTIP Amount Allocated</b>	<b>Year of Allocation</b>	<b>Year Completed</b>
1	Golden Gate Park Stakeholder Working Group and Action Framework	SFCTA	\$60,000	20/21	2021
2	District 2 Safety Study	SFCTA	\$270,000	22/23	Underway
3	District 3 Pedestrian Safety Improvements	SFMTA	\$69,800	19/20	Underway
4	District 4 Mobility Improvements Study	SFCTA	\$100,000	19/20	2021
5	Octavia Boulevard Circulation and Accessibility Study Update	SFCTA	\$100,000	19/20	2023
6	Treasure Island Supplemental Transportation Study	SFCTA	\$100,000	21/22	2023
6	Mission Bay School Access Plan	SFCTA	\$229,307	22/23	Underway
7	Ocean Avenue Mobility Action Plan	SFCTA	\$100,000	21/22	2023
8	Slow Duboce Triangle Study	SFCTA	\$7,000	22/23	2022
8	Jane Warner Plaza	SFPW	\$100,000	22/23	Underway
9	Alemany Realignment Study	SFCTA	\$100,000	19/20	Cancelled
9	Valencia Long-Term Bikeway Study	SFMTA	\$210,000	22/23	Underway
10	District 10 15 Third Street Bus Study	SFCTA	\$30,000	19/20	2020
11	Alemany Safety	SFMTA	\$100,000	19/20	2020

**Neighborhood Transportation Program (NTP)  
Project Status as of 5/22/2024**

**Capital Projects - Prop K NTIP Cycle 2**

<b>District</b>	<b>Project Name</b>	<b>Lead Agency</b>	<b>NTIP Amount Allocated</b>	<b>Year of Allocation</b>	<b>Year Completed</b>
1	Anza Bike Lanes	SFMTA	\$220,000	19/20	2022
1	Fulton Street Safety	SFMTA	\$236,215	20/21	2023
1	District 1 Multimodal Transportation Study	SFCTA	\$300,000	22/23	Underway
1	38th and Geary Rectangular Rapid Flashing Beacons	SFMTA	\$212,000	22/23	Underway
2	District 2 Safety Study Implementation	TBD	\$430,000	22/23	Reserved
3	District 3 Pedestrian Safety Improvements	SFMTA	\$819,800	19/20	Underway
4	District 4 Mobility Improvements Study Additional Funds [NTIP Planning]	SFCTA	\$60,000	20/21	2021
4	District 4 Microtransit Business Plan	SFCTA	\$310,000	22/23	Underway
4	Ortega Street Improvements	SFMTA	\$330,000	22/23	Underway
5	Buchanan Mall Bulbouts - Golden Gate and Turk	SFPW	\$751,000	20/21	2022
6	Tenderloin Traffic Safety Improvements	SFMTA	\$177,693	20/21	2021
6	Mission Bay School Access Plan	TBD	\$90,000	22/23	Reserved
6	District 6 Traffic Calming & Sideshow Deterrence	SFMTA	\$360,000	22/23	Underway
7	District 7 FY20 Participatory Budgeting Priorities	SFMTA	\$132,600	20/21	Underway
7	Lake Merced Quick Build	SFMTA	\$250,000	20/21	2022
7	Ocean Avenue Mobility Action Plan	SFCTA	\$175,000	21/22	2023
7	District 7 Ocean Ave Safety & Bike Access	SFMTA	\$237,000	22/23	Underway
8	Upper Market Street Safety Improvements	SFMTA	\$500,000	20/21	2023
8	14th Street Road Diet	SFMTA	\$60,700	21/22	2023
8	Next Generation Sanchez Slow Street	SFMTA	\$277,300	22/23	Underway
9	Vision Zero Proactive Traffic Calming - Visitacion Valley and Portola Neighborhoods	SFMTA	\$150,000	20/21	Underway
9	District 9 Traffic Calming	SFMTA	\$165,000	21/22	Underway
9, 10	Hairball Segments F & G - Additional Funds	SFPW	\$150,000	19/20	2021
10	Visitacion Valley & Portola CBTP Implementation	SFMTA	\$435,000	22/23	Reserved
10	Minnesota and 25th St Intersection Improvements	SFPW	\$400,000	20/21	Underway
11	District 11 Traffic Calming Cycle 2	SFMTA	\$600,000	19/20	Underway



**Neighborhood Transportation Program (NTP)  
Project Status as of 5/22/2024**

**Planning Projects - Prop K NTIP Cycle 1**

<b>District</b>	<b>Project Name</b>	<b>Lead Agency</b>	<b>NTIP Amount Allocated</b>	<b>Year of Allocation</b>	<b>Year Completed</b>
1	District 1 NTIP Planning Project	SFMTA	\$100,000	14/15	2017
2	Managing Access to the "Crooked Street" (1000 Block of Lombard Street)	SFCTA	\$100,000	14/15	2017
3	District 3 Pedestrian Safety Improvements	SFMTA	\$100,000	15/16	2020
4	66 Quintara Reconfiguration Study	SFMTA	\$100,000	16/17	2018
5	Western Addition Community-Based Transportation Plan	SFMTA	\$100,000	14/15	2023
6	Pedestrian Safety in SOMA Youth and Family Zone - Folsom-Howard Streetscape	SFMTA	\$48,000	15/16	2019
6	Pedestrian Safety in SOMA Youth and Family Zone - Vision Zero Ramp Intersection Study	SFCTA	\$52,000	15/16	2018
7	Balboa Area TDM Study	Planning	\$100,000	15/16	2018
8	Valencia Street Bikeway Implementation Plan	SFMTA	\$50,000	17/18	2019
9	Alemanya Interchange Improvement Study	SFCTA	\$100,000	14/15	2017
10	District 10 Mobility Management Study	SFCTA	\$100,000	17/18	2018
11	Geneva-San Jose Intersection Study	SFMTA	\$100,000	15/16	2020

## Neighborhood Transportation Program (NTP)

Project Status as of 5/22/2024

## Capital Projects - Prop K NTIP Cycle 1

District	Project Name	Lead Agency	NTIP Amount Allocated	Year of Allocation	Year Completed
1	Arguello Blvd Near-Term Improvements	SFMTA	\$188,931	15/16	2018
1	Fulton Street Safety	SFMTA	\$82,521	18/19	2020
2	Lombard Street Corridor	SFMTA	\$400,000	15/16	2020
2	Lombard Crooked Street Reservation & Pricing System Development	SFCTA	\$200,000	16/17	2019
3	Portsmouth Square Community Based Transportation Plan	SFCTA	\$50,000	17/18	2020
3	Jefferson Street Improvements Phase 2	SFPW	\$200,000	17/18	2021
3	Battery and Sansome Bicycle Connections	SFMTA	\$200,000	18/19	2019
4	Sloat/Skyline Intersection Alternatives Analysis	SFMTA	\$250,000	16/17	2022
4	Lower Great Highway Pedestrian Improvements	SFMTA	\$250,000	17/18	2021
5	Frederick/Clayton Traffic Calming	SFMTA	\$175,000	18/19	2022
5	Divisadero Intersection Improvements	SFMTA	\$273,500	18/19	2021
6	Golden Gate Avenue Buffered Bike Lane	SFMTA	\$50,000	15/16	2019
6	Bessie Carmichael Crosswalk	SFMTA	\$28,000	15/16	2018
6	South Park Traffic Calming	SFMTA	\$30,000	16/17	2018
6	Howard Street - Embarcadero to 3rd Street	SFMTA	\$75,000	18/19	2021
6	7th and 8th Streets Freeway Ramp Intersections Near Term Improvements	SFMTA	\$160,000	18/19	2021
7	Lake Merced Bikeway Feasibility	SFMTA	\$150,000	18/19	2021
7	District 7 FY19 Participatory Budgeting Priorities	SFMTA	\$255,000	18/19	Underway
8	Elk Street at Sussex Street Pedestrian Safety Improvements	SFMTA	\$405,000	16/17, 18/19	2023
9	Alemanly Interchange Improvement Project Phase 1	SFMTA	\$276,603	16/17	2021
9	Alemanly Interchange Improvement Project Phase 2	SFPW	\$123,392	17/18	Design completed 2021. Construction underway.
9, 10	Hairball Segments F & G	SFPW	\$400,000	16/17, 17/18	2021
10	Cesar Chavez/Bayshore/Potrero Intersection Improvements	SFMTA	\$100,000	14/15	2017
10	Potrero Hill Pedestrian Safety and Transit Stop Improvements	SFMTA	\$60,000	14/15	2022
11	District 11 Near-Term Traffic Calming	SFMTA	\$600,000	17/18	2022



# Neighborhood Program Guidelines



San Francisco County Transportation Authority  
**Neighborhood**  
program

---

Approved July 2023

---

## Table of Contents

<b>OVERVIEW</b>	<b>3</b>
Why was the Neighborhood Program created?	3
What do we want to achieve with the Neighborhood Program?	3
What type of work does the Neighborhood Program fund?	3
How much funding is available? Are there local match requirements?	4
<b>ELIGIBILITY</b>	<b>5</b>
What types of planning efforts can be funded?	5
What types of capital efforts can be funded?	6
Who can lead a Neighborhood Program effort?	6
How will proposals be screened for eligibility?	6
What specific activities and expenses are eligible for reimbursement?	7
<b>PROJECT INITIATION AND SCOPING</b>	<b>8</b>
Where do Neighborhood Program project ideas come from?	8
How does an idea develop into a Neighborhood Program grant?	8
<b>GRANT AWARD TERMS</b>	<b>10</b>
Are there timely use of funds deadlines?	10
What are the monitoring, reporting, and attribution requirements?	10
<b>FOR MORE INFORMATION</b>	<b>10</b>
<b>NEIGHBORHOOD PROGRAM PLANNING GRANT PROCESS FLOW-CHART</b>	<b>11</b>

The Neighborhood Program is made possible by the San Francisco County Transportation Authority through grants of Proposition L (Prop L) local transportation sales tax funds.

**PHOTO CREDITS:**

Cover photo courtesy of SFMTA Photography Department



**San Francisco  
County Transportation  
Authority**

1455 Market Street, 22nd Floor,  
San Francisco, CA 94103

**TEL** 415-522-4800

**EMAIL** info@sfcta.org **WEB** www.sfcta.org

---

## Overview

### **WHY WAS THE NEIGHBORHOOD PROGRAM CREATED?**

The Transportation Authority's Neighborhood Program (also known as the Neighborhood Transportation Program) is intended to focus on community-based neighborhood-scale transportation improvements. The Transportation Authority developed the Neighborhood Program in 2014 under Prop K, the predecessor to Prop L. It was created in response to mobility and equity analysis findings from the San Francisco Transportation Plan (SFTP) 2040 and to the public and the Transportation Authority Board's desire for more focus on neighborhoods, especially in Equity Priority Communities and other underserved neighborhoods.<sup>1</sup> The SFTP 2050 (December 2022) reaffirmed the importance of the Neighborhood Program by including it in its investment plan, noting that neighborhood transportation plans establish a pipeline of grant-ready projects throughout the city that reflect community priorities, such as street safety, mode shift, transit accessibility, and mobility.

### **WHAT DO WE WANT TO ACHIEVE WITH THE NEIGHBORHOOD PROGRAM?**

The purpose of the Neighborhood Program is to build community awareness of, and capacity to provide input to, the transportation planning process and to advance delivery of community-supported neighborhood-scale projects. The latter can be accomplished through strengthening project pipelines and helping move individual projects more quickly toward implementation, especially in Equity Priority Communities and other neighborhoods with high unmet needs.

### **WHAT TYPE OF WORK DOES THE NEIGHBORHOOD PROGRAM FUND?**

Neighborhood Program Planning funds can be used for community-based planning efforts in San Francisco neighborhoods, especially in Equity Priority Communities or other underserved neighborhoods and areas with vulnerable populations (e.g. seniors, children, and/or people with disabilities). Specifically, Neighborhood Program Planning funds can be used to support neighborhood-scale efforts that identify a community's transportation needs, identify and evaluate potential solutions, and recommend next steps for meeting the identified needs. Neighborhood Program Planning funds can also be used to complete additional planning/conceptual engineering for existing planning projects that community stakeholders regard as high priority. Recommendations resulting from Neighborhood Program Planning projects should be eligible for Neighborhood Program Capital funds, other Prop L programs, and/or additional sources.

---

<sup>1</sup> <https://www.sfcta.org/policies/equity-priority-communities>

Neighborhood Program Capital funds can be used for implementation of Neighborhood Program Planning grant recommendations, or of other community-supported, neighborhood-scale projects that have already been identified.

All Neighborhood Program efforts must address one or more of the following SFTP priorities:

- Improve safety for pedestrians, cyclists and/or other street users
- Encourage walking, biking, and/or transit use
- Improve transit accessibility and/or reliability
- Improve mobility for Equity Priority Communities or other underserved neighborhoods and vulnerable populations (e.g., seniors, children, and/or people with disabilities)

Ultimately, Neighborhood Program efforts should prioritize and lead to the implementation of community-supported, neighborhood-scale capital improvements that can be funded by the Transportation Authority's Prop L transportation sales tax and/or other sources.

### **HOW MUCH FUNDING IS AVAILABLE? ARE THERE LOCAL MATCH REQUIREMENTS?**

The Neighborhood Program provides \$700,000 in Prop L funding for each supervisorial district to use over the next five years (Fiscal Years 2023/24 - 2027/28). The Neighborhood Program includes funds for Planning efforts and Capital project development and implementation. There is no prescribed proportion of funds between Planning and Capital; however, historically, \$100,000 has been programmed for Planning and \$600,000 for Capital for each district. Planning funds can be used for one planning effort or multiple smaller efforts. No local match is required for planning grants, though it is strongly encouraged.

The Neighborhood Program Capital program funds are intended as matching funds for implementation of Neighborhood Program Planning grant recommendations or to fund other community-supported, neighborhood-scale projects that already have been identified and are being prepared for delivery in the next five years. Neighborhood Program Capital funds must leverage other non-Prop L funds to help achieve the Prop L leveraging assumptions for the Neighborhood Program. Exceptions may be granted on a case-by-case basis with consideration given to, among other factors, whether other funding options exist and the status of overall Neighborhood Program leveraging to date.

---

## Eligibility

Eligible project types are community-based neighborhood-scale transportation improvements that are eligible for other 2022 Transportation Expenditure Plan programs and result in public-facing benefits. Examples of eligible Planning and Capital efforts are described below.

### WHAT TYPES OF PLANNING EFFORTS CAN BE FUNDED?

Examples of eligible planning efforts include:

- Project-level plans or conceptual designs for smaller efforts (e.g. advancing conceptual design of a high priority project identified in a prior community planning effort, safety project concepts development, and transportation demand management planning including neighborhood parking management studies).
- Identification and advancement of design of low-cost enhancements (e.g. new crosswalks, sidewalk bulbouts) to coordinate their construction with paving projects.
- District-wide needs and prioritization processes (e.g. the District 1 Multimodal Transportation Study).
- Traditional neighborhood transportation plan development (e.g. Mission Bay School Access Plan, Western Addition Community-Based Transportation Plan).
- Corridor plans (e.g. Valencia Long-Term Bikeway Study, Alemany Realignment Study, Ocean Avenue Mobility Action Plan).

The expectation is that Neighborhood Program funds will be leveraged like other Prop L funds. This leveraging would be necessary to fully fund some of the larger scale and more intensive efforts listed above. (A traditional neighborhood transportation plan might run \$300,000; a corridor plan could be much more expensive, depending on the scope). Without leveraging, a \$100,000 Neighborhood Program Planning grant could fund the smaller-scale planning efforts noted in the first three bullet points.

All Neighborhood Program Planning efforts must include a collaborative planning process with community stakeholders such as residents, business proprietors, transit agencies, human service agencies, neighborhood associations, non-profit or other community-based organizations and faith-based organizations. The purpose of this collaboration is to solicit comments from these stakeholders, review preliminary findings or designs with them, and utilize their perspective in identifying potential strategies and solutions for addressing transportation needs.

### **WHAT TYPES OF CAPITAL EFFORTS CAN BE FUNDED?**

Neighborhood Program Capital grants are intended to advance recommendations from Neighborhood Program Planning effort recommendations or other community-supported, neighborhood-scale plans and studies. For example, Neighborhood Program Capital funds could be used to fund design of a project that could then apply for construction funding from a competitive grant source.

Examples of eligible capital efforts include, but are not limited to, design and implementation of:

- Sidewalk bulbouts, crosswalks, and traffic calming measures (e.g. speed humps)
- New and upgraded bicycle lanes and paths
- New and upgraded traffic signals, including flashing beacons to improve safety for street users
- Bus stop improvements
- Transportation Demand Management pilots (e.g. to encourage walking, biking or transit use; to implement recommendations from a neighborhood parking management study)

The expectation is that Neighborhood Program funds will be leveraged like other Prop L funds. This leveraging would be necessary to fully fund some of the larger scale and more intensive efforts listed above.

### **WHO CAN LEAD A NEIGHBORHOOD PROGRAM EFFORT?**

Neighborhood Program efforts can be led by Prop L project sponsors, other public agencies, and/or community-based organizations. The grant recipient, however, must be one of the following Prop L-eligible sponsors: the San Francisco County Transportation Authority (Transportation Authority or SFCTA), the San Francisco Municipal Transportation Agency (SFMTA), San Francisco Public Works (SFPW), or the Planning Department. If a non-Prop L sponsor is leading the Neighborhood Program project, it will need to partner with a Prop L sponsor or request that a Prop L sponsor act as a fiscal sponsor.

### **HOW WILL PROPOSALS BE SCREENED FOR ELIGIBILITY?**

In order to be eligible for a Neighborhood Program grant, a project proposal must satisfy all of the following screening criteria:

- Project sponsor is one of the following Prop L project sponsors: SFCTA, SFMTA, SFPW, San Francisco Planning Department – or is a community-based organization partnering with a Prop L-eligible sponsor that is the grant recipient and fiscal sponsor.
  - Project is eligible for funding from Prop L.
-



- 
- If a project is seeking funds for planning/conceptual engineering phase, a modest amount of the overall grant may be applied toward environmental clearance (typically for categorical exemption types of approvals), but this may not represent a significant portion of proposed expenditures.
  - Cumulative Neighborhood Program requests for a given supervisorial district do not exceed the maximum amount available for each supervisorial district (i.e., \$700,000 in each 5-year cycle).
  - Project will address at least one of the SFTP priorities: improve safety for pedestrians, cyclists and/or other street users; encourage walking, biking and/or transit use; improve transit accessibility and/or reliability; and improve mobility for Equity Priority Communities or other underserved neighborhoods and at-risk populations (e.g., seniors, children, and/or people with disabilities).
  - Project is neighborhood-oriented and the scale is at the level of a neighborhood or corridor. The project may be district-oriented for efforts such as district-wide prioritization efforts, provided that the scope is compatible with the proposed funding.
  - Project must include or be recommended by a collaborative planning process with community stakeholders.
  - Planning projects shall be proposed to be completed within two years.

Note that all proposed capital projects will be evaluated in accordance with Prop L prioritization criteria, specifically: readiness, urgency, benefits to disadvantaged populations, leveraging, cost effectiveness, and safety.

### **WHAT SPECIFIC ACTIVITIES AND EXPENSES ARE ELIGIBLE FOR REIMBURSEMENT?**

Eligible Neighborhood Program Planning costs include: community surveys, data gathering and analysis, community meetings, charrettes, focus groups, planning and technical consultants, outreach assistance provided by community-based organizations, developing prioritized action plans, conceptual or 30% design drawings, cost estimates, and bilingual services for interpreting and/or translation services for meetings.

Eligible Neighborhood Program Capital costs include: final or 100% design drawings, construction-related activities, requests for contracting proposals, contracting bid selection, notice of construction, procurement of materials, and construction. Public engagement activities supporting the design and construction phases are also eligible costs.

Further details on eligible expenses are included in the Prop L Standard Grant Agreement that is executed by the Transportation Authority and the Prop L grant recipient.

---

## Project Initiation and Scoping

### WHERE DO NEIGHBORHOOD PROGRAM PROJECT IDEAS COME FROM?

The Neighborhood Program provides funds for each district supervisor to direct funds to community-based, neighborhood-scale planning and capital efforts. Ultimately, the district supervisor (acting in their capacity as a Transportation Authority Board commissioner) will recommend which project(s) will be funded with a Neighborhood Program grant. All projects must be consistent with the adopted guidelines.

Anyone can come up with a Neighborhood Program grant idea, including, but not limited to, a District Supervisor, agency staff, a community-based organization, or a community member. There is no pre-determined schedule or call for projects for the Neighborhood Program grants. Rather, each Transportation Authority Board member will contact the Transportation Authority's Neighborhood Program Coordinator when they are interested in exploring Neighborhood Program proposals. Board members may already have an idea in mind, seek help from agency staff in generating ideas, and/or solicit input from constituents and other stakeholders. See below for how these ideas are vetted and turned into Neighborhood Program grants.

### HOW DOES AN IDEA DEVELOP INTO A NEIGHBORHOOD PROGRAM GRANT?

**Initiating a request:** The District Supervisor initiates the process by contacting the Transportation Authority's or SFMTA's Neighborhood Program Coordinator with a planning or capital proposal, a request to help identify potential planning or capital project ideas, or to help with a formal or informal call for projects for their respective district.

The Transportation Authority and the SFMTA have designated Neighborhood Program Coordinators who will work collaboratively to implement the Neighborhood Program grant program. The Neighborhood Program Coordinators will work with the District Supervisor and any relevant stakeholders throughout the Neighborhood Program proposal identification and initial scoping process. They will be responsible for seeking input from appropriate staff within their agencies, as well as from other agencies depending on the particular topic.

**Vetting Ideas and Scoping:** Once contacted by a District Supervisor, the SFCTA and SFMTA Neighborhood Program Coordinators will establish a dialogue with the Supervisor and agency staff to develop an understanding of the particular neighborhood's needs and concerns that could be addressed through a Neighborhood Program project, to evaluate an idea's potential for addressing identified issues, and to explore whether complementary planning or capital efforts are underway, in the pipeline, or have already occurred.

This step in the process is necessarily iterative and collaborative in nature. It involves working with the District Supervisor to identify an eligible Neighborhood Program proposal and reaching agreement on the purpose and need, what organization will lead/support the effort, developing a summary scope, identifying desired outcomes and/or deliverables, and preparing an initial cost estimate and funding plan.

Neighborhood Program grant funds are modest, but a great deal can be accomplished depending on how the effort is scoped and how it leverages other resources (e.g., existing plans, staff, other fund sources, concurrent planning and design efforts, etc.). The checklist shown in Table 1 reflects elements that are typically necessary to support a strong Neighborhood Program proposal.

**Agreement on Roles and Responsibilities:** As the project scope begins to solidify, another key aspect to address is determining the lead agency and identifying the roles of other agencies and stakeholders that need to be involved. The SFCTA and SFMTA Neighborhood Program Coordinators will assist with this effort, which requires consideration of multiple factors such as how well the Neighborhood Program proposal matches an agency’s mission and goals; current priorities; staff resource availability during the proposal timeframe; and availability of consultant resources to address staff resource constraints. The Transportation Authority is willing to provide access to its on-call consultants to assist with Neighborhood Program efforts if that is found to be a viable approach to a particular proposal.

Agreeing upon the lead agency and the timing of the effort are important outcomes of the scoping phase. Based on prior experience and feedback from project sponsors, it is clear that the implementing agency’s participation in the project initiation and scoping process and involvement in the effort in some form (from leading the effort to strategically providing input and reviewing key deliverables) helps ensure that the recommendations stemming from the study will be prioritized sooner rather than later in that agency’s work program.

**Requesting allocation of funds:** The designated grant recipient must complete a Prop L allocation

**Table 1.**  
**Checklist for Developing a Strong  
Neighborhood Program Grant Proposal**

**Does your proposal have...?**

- Clear purpose/need statement and goals
- Clear list of deliverables/outcomes
- Well-defined scope, schedule, and budget
- Clear and diverse community support
- Coordination with other relevant planning efforts
- Inclusive community engagement strategy
- Equity Priority Community or underserved community focus
- Appropriate funding/leveraging commensurate with proposed scope
- Implementation model (lead agency; agency and community roles defined)

request form that details the agreed-upon scope, schedule, cost and funding plan for the project. Transportation Authority staff will review the allocation request to ensure completeness and compliance with Prop L requirements. Once it is finalized, the funding request will go through the next monthly Transportation Authority Board cycle for approval. This involves review and action by the Community Advisory Committee and Transportation Authority Board.

## Grant Award Terms

All Neighborhood Program projects must adhere to the Prop L Strategic Plan policies and the requirements set forth in the Prop L Standard Grant Agreement (available upon request). The sections below highlight answers to a few commonly asked questions.

### ARE THERE TIMELY USE OF FUNDS DEADLINES?

Planning efforts must be completed within two years of the grant award.

If a planning or capital grant recipient does not demonstrate adequate performance and timely use of funds, the Transportation Authority may, after consulting with the project sponsor and relevant District Supervisor, take appropriate actions, which can include termination or redirection of the grant.

### WHAT ARE THE MONITORING, REPORTING, AND ATTRIBUTION REQUIREMENTS?

Neighborhood Program grants will be subject to the same monitoring, reporting and attribution requirements as for other Prop L grants. Requirements are set forth in the Prop L Standard Grant Agreement and include items such as including appropriate attribution on outreach fliers and reports, preparing quarterly progress reports, and submitting a closeout report upon project completion.

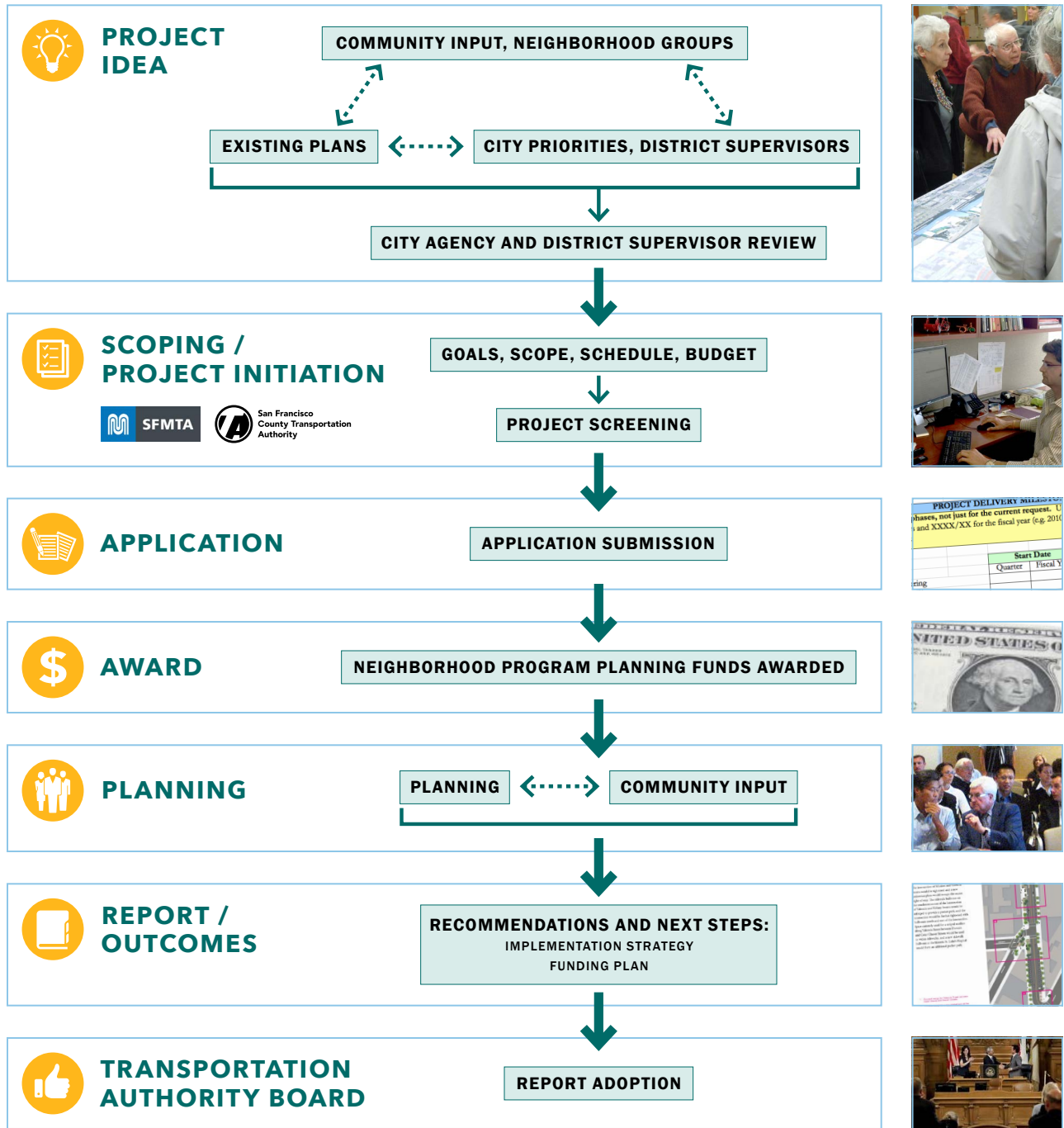
Upon completion of each planning project, project sponsors will report to the Transportation Authority Board on key findings, recommendations, and next steps, including implementation and funding strategy. For Neighborhood Program Planning grants, the Board will accept or approve the project's final report.

## For More Information





Visit the Transportation Authority's website at [sfcta.org/policies/neighborhood-program](https://sfcta.org/policies/neighborhood-program) or contact the Neighborhood Program coordinator:

**TRANSPORTATION AUTHORITY** Anna LaForte  
415.522.4805  
[anna.laforte@sfcta.org](mailto:anna.laforte@sfcta.org)

# Neighborhood Program Planning Grant Process Flow-chart



The Neighborhood Program is funded by grants of Proposition L local transportation sales tax funds.

 @sfcta  
 @sfcta  
 [linkedin.com/company/transportation-authority](https://www.linkedin.com/company/transportation-authority)  
 @sfcta

 [sfcta.org/stay-connected](https://sfcta.org/stay-connected)

1455 Market Street, 22nd Floor,  
San Francisco, CA 94103

**TEL** 415-522-4800

**EMAIL** [info@sfcta.org](mailto:info@sfcta.org)

**WEB** [www.sfcta.org](http://www.sfcta.org)



San Francisco County Transportation Authority  
**Neighborhood**  
program

# San Francisco County Transportation Authority Allocation Request Form

<b>FY of Allocation Action:</b>	FY2024/25
<b>Project Name:</b>	San Francisco Transportation Plan 2050+
<b>Primary Sponsor:</b>	San Francisco County Transportation Authority

## EXPENDITURE PLAN INFORMATION

<b>PROP L Expenditure Plans</b>	Citywide and Modal Planning
<b>Current PROP L Request:</b>	\$700,000
<b>Supervisory District</b>	Citywide

## REQUEST

### Brief Project Description

The San Francisco Transportation Plan (SFTP) is the blueprint for the city's transportation system development and investment over the next 30 years. SFTP 2050+ is a minor update to SFTP 2050 (adopted 2022). It will update key assumptions and inputs since SFTP 2050, and refine investment strategies and recommendations. We will update policy developments and report on implementation progress of SFTP 2050 and recommendations from ConnectSF Streets and Freeways Strategy and Transit Strategy. This process will incorporate data and guidance from PBA 2050+ and Transit 2050+ as well as provide the basis for San Francisco's input to PBA 2050+.

### Detailed Scope, Project Benefits and Community Outreach

The San Francisco Transportation Plan (SFTP) identifies SF's transportation goals, needs, performance framework and investment priorities, as well as expected results/performance resulting from implementation of a recommended financially constrained Plan and less constrained Vision. The SFTP is updated every four years, with a minor update midway through the four-year period. All SFTP updates (major and minor) provide the basis for San Francisco's input to the nine-county Bay Area's Regional Transportation Plan / Sustainable Communities Strategy (RTP/SCS) by prioritizing and recommending transportation projects and programs for anticipated local, regional, state, and federal funding.

SFTP 2050+ (SFTP+) will result in a minor update to the SFTP 2050. This document will inform San Francisco's advocacy for discretionary (e.g. competitive) transportation funds, as well for new transportation revenues. The purpose of SFTP+ is to update key assumptions and inputs since SFTP 2050, particularly post-pandemic travel patterns, lowered revenue projections, and revised land-use allocation, and refine SFTP investment strategies and recommendations. This minor update will compile and re-prioritize major transportation and climate investments for the City and County with a recovery-oriented context. This process will incorporate data and guidance from MTC's PBA 2050+ and Transit 2050+ as well as provide the basis for San Francisco's input to PBA 2050+.

A key focus area for MTC relates to the state of the region's transit system, which will be addressed through the parallel Transit 2050+ process. The Transit 2050+ update focuses on transforming the regional transit system to create a more connected, customer-serving regional transit system (including a potential new approach to regional fare integration such as the pilot BayPass program),

attracting riders back and growing ridership, and addressing the Fiscal Cliff for BART, Muni and other Bay Area transit operators. The need to consider restructuring the way the region pays for transit is a particular challenge and opportunity at this time. These regional efforts to re-think many aspects of transit and to consider other reforms are mirrored and informed by the state's efforts with CA Transit Transformation Task Force and Caltrans D4 Transit (network priority) Plan.

In addition to investment strategies, the SFTP examines policy and programmatic needs to help reach the City's long-range goals and can make policy recommendations that can be adopted as SFCTA policies and/or recommended for adoption by partner entities. We will update policy developments and report on implementation progress of SFTP 2050 and recommendations from ConnectSF Streets and Freeways Strategy and Transit Strategy.

#### Task 1: Project Management

- Conduct ongoing management of the project, including scope, schedule, budget and coordination with city and regional agency staff.
- Deliverables: regular reporting on project status, schedule updates

#### Task 2: Agency Partner Collaboration

- Establish a Technical Advisory Committee (TAC) to collect feedback on the outreach process, technical analysis, and policy topics
- Participate in MTC's minor update to Plan Bay Area (PBA 2050+) to coordinate with SFTP+
- Participate in local, regional and state working groups to stay informed
- Deliverables: TAC meeting materials, meeting notes

#### Task 3: Outreach and Public Involvement

- Design and execute public engagement plans to ensure the appropriate level of public education and feedback
  - Two rounds of citywide engagement anticipated
  - All outreach will be conducted in multiple languages and include in-person events
- Deliverables: draft and final outreach materials, draft and final outreach report

#### Task 4: Travel Modeling

- Establish new CHAMP base model incorporating data from the 2023 MTC Bay Area Travel Diary Survey
  - Incorporate updated base network information (street changes, transit service changes), other available survey data (e.g. Census, CA EDD, etc.) and observed data (traffic counts, transit ridership, etc.)
  - Incorporate post-pandemic changes in travel behavior such as increased levels of telecommuting/work from home and reduced transit ridership.
- Confirm a future baseline land use allocation for 2050, using information from PBA 2050+ and the Planning Department
  - Incorporate updates to key local inputs including new San Francisco Planning Department Housing Element adopted growth and recommendations from the forthcoming West Side Network Planning Study
  - Incorporate regional and local transit transformation progress and strategies such as from Transit 2050+ and the Transit Transformation Plan.
- Run models and evaluate performance
  - Run sensitivity analyses as needed
- Deliverables: assumptions memo, output data tables and summaries, analysis memos, draft and final report, narrative sections for SFTP+ report

#### Task 5: Revenues and Funding Scenarios



- Update revenue forecasts consistent with PBA 2050+ and incorporate into the financially constrained scenario. Update revenue forecast for vision scenario.
- Develop investment scenarios for the fiscally constrained and vision scenarios.
- Deliverables: draft and final revenue forecasts for investment and vision scenarios, narrative sections for SFTP+ report

**Task 6: Other Major Studies**

- Monitor other major studies ongoing locally and regionally, and incorporate assumptions and findings into SFTP+ where appropriate, including but not limited to
  - West Side Network Study, to commence this summer in partnership with SFMTA
  - Next Generation Freeway Study
- Deliverables: narrative sections for SFTP+ report

**Task 7: Policy Developments**

- Prepare brief discussions to document updates to previous studies and various policy issues, with funding opportunities, on topics such as
  - Transit Strategy updates
  - Streets and Freeway Strategy updates: Freeway Network Planning, HOV Priority Network, recent studies
  - Transportation Demand Management
  - Next Generation Vision Zero
  - Biking & Rolling Plan, School Transportation Planning & Implementation
  - Climate Adaptation and Resilience
  - Electrification Readiness
  - West Side Transportation Network Planning Study
  - Transportation & Land-Use Reconnecting Communities
  - AV Policy & Regulation
  - Ferries
  - TIMMA
- Deliverables: narrative sections for SFTP+ report

**Task 8: Report and Board Approval**

- Present progress reports to CAC and Board
- Draft final report
- Produce report
- Present for final approval at CAC and Board
- Deliverables: draft and final report, Board memos and presentations

**Project Location**

Citywide

<b>Is this project in an Equity Priority Community?</b>	Yes
<b>Does this project benefit disadvantaged populations?</b>	Yes

**Project Phase(s)**

Planning/Conceptual Engineering (PLAN)

Type of Project in the Prop L 5YPP/Prop AA Strategic Plan?	Named Project
Is requested amount greater than the amount programmed in the relevant 5YPP or Strategic Plan?	Less than or Equal to Programmed Amount
PROP L Amount	\$700,000.00

# San Francisco County Transportation Authority Allocation Request Form

<b>FY of Allocation Action:</b>	FY2024/25
<b>Project Name:</b>	San Francisco Transportation Plan 2050+
<b>Primary Sponsor:</b>	San Francisco County Transportation Authority

**ENVIRONMENTAL CLEARANCE**

<b>Environmental Type:</b>	Categorically Exempt
----------------------------	----------------------

**PROJECT DELIVERY MILESTONES**

Phase	Start		End	
	Quarter	Calendar Year	Quarter	Calendar Year
Planning/Conceptual Engineering (PLAN)	Apr-May-Jun	2024	Jan-Feb-Mar	2026
Environmental Studies (PA&ED)				
Right of Way				
Design Engineering (PS&E)				
Advertise Construction				
Start Construction (e.g. Award Contract)				
Operations (OP)				
Open for Use				
Project Completion (means last eligible expenditure)				

**SCHEDULE DETAILS**

- Task 1 Project Management: Q4 FY24 - Q3 FY26
- Task 2 Agency Partner Collaboration: Q4 FY24 - Q3 FY26
- Task 3 Outreach and Public Involvement: Q2 FY25 - Q4 FY25
- Task 4 Travel Modeling: Q4 FY24 - Q4 FY25
- Task 5 Revenues and Funding Scenarios: Q1 FY25 - Q1 FY26
- Task 6 Other Major Studies: Q4 FY24 - Q1 FY26
- Task 7 Policy Developments: Q4 FY24 - Q1 FY26
- Task 8 Report and Board Approval: Q2 FY26 - Q3 FY26

# San Francisco County Transportation Authority Allocation Request Form

<b>FY of Allocation Action:</b>	FY2024/25
<b>Project Name:</b>	San Francisco Transportation Plan 2050+
<b>Primary Sponsor:</b>	San Francisco County Transportation Authority

## FUNDING PLAN - FOR CURRENT REQUEST

Fund Source	Planned	Programmed	Allocated	Project Total
EP-228: Citywide and Modal Planning	\$700,000	\$0	\$0	\$700,000
STP 3%	\$0	\$790,011	\$0	\$790,011
<b>Phases In Current Request Total:</b>	\$700,000	\$790,011	\$0	\$1,490,011

## COST SUMMARY

Phase	Total Cost	PROP L - Current Request	Source of Cost Estimate
Planning/Conceptual Engineering	\$1,490,011	\$700,000	Staff detailed budget, informed by prior similar efforts
Environmental Studies	\$0		
Right of Way	\$0		
Design Engineering	\$0		
Construction	\$0		
Operations	\$0		
Total:	\$1,490,011	\$700,000	

<b>% Complete of Design:</b>	N/A
<b>As of Date:</b>	N/A
<b>Expected Useful Life:</b>	N/A

**San Francisco County Transportation Authority  
Prop L/Prop AA/Prop D TNC Allocation Request Form**

**MAJOR LINE ITEM BUDGET**

<b>BUDGET SUMMARY</b>									
Agency	Task 1 - Project Management	Task 2 - Agency Partner Collaboration and Input	Task 3 - Outreach and Public Involvement	Task 4 - Participation in PBA2050+	Task 5 - Revenues and Funding	Task 6 - Investment and Vision Scenario Revisions	Task 7 - Policy Development	Task 8 - Report and Board Approval	Total
SFCTA	\$ 339,306	\$ 104,911	\$ 126,876	\$ 47,773	\$ -	\$ 108,053	\$ 86,965	\$ 193,794	\$ 1,007,678
Consultant			\$ 100,000				\$ 150,000		\$ 250,000
Contingency									\$ 182,333
Other Direct Costs			\$ 50,000						\$ 50,000
<b>Total</b>	<b>\$ 339,306</b>	<b>\$ 104,911</b>	<b>\$ 276,876</b>	<b>\$ 47,773</b>	<b>\$ -</b>	<b>\$ 108,053</b>	<b>\$ 236,965</b>	<b>\$ 193,794</b>	<b>\$ 1,490,011</b>

SFCTA	Hours	24 Base Hourly Rate	Overhead Multiplier	Fully Burdened Hourly Cost	FTE	Total
Deputy Director	1509	\$112.64	2.42	\$272.27	0.30	\$410,905
Assistant Deputy Director	692	\$85.40	2.42	\$206.43	0.17	\$142,785
Principal Transportation Planner	425	\$77.85	2.42	\$188.16	0.14	\$80,039
Senior Transportation Planner	13	\$67.12	2.42	\$162.25	0.00	\$2,159
Transportation Planner	844	\$57.88	2.42	\$139.90	0.20	\$118,050
Communications Manager	206	\$60.30	2.42	\$145.75	0.08	\$30,060
Senior Graphic Designer	185	\$52.58	2.42	\$127.09	0.04	\$23,450
Principal Transportation Modeler	661	\$85.67	2.42	\$207.07	0.16	\$136,862
Transportation Modeler	50	\$59.27	2.42	\$142.25	0.01	\$7,156
Senior Public Policy Manager	241	\$85.40	2.42	\$206.43	0.10	\$49,709
Intern	96	\$28.00	2.42	\$67.68	0.02	\$6,503
<b>Total</b>	<b>4922</b>				<b>1.23</b>	<b>\$ 1,007,678</b>

# San Francisco County Transportation Authority Allocation Request Form

<b>FY of Allocation Action:</b>	FY2024/25
<b>Project Name:</b>	San Francisco Transportation Plan 2050+
<b>Primary Sponsor:</b>	San Francisco County Transportation Authority

## SFCTA RECOMMENDATION

<b>Resolution Number:</b>		<b>Resolution Date:</b>	
<b>Total PROP L Requested:</b>	\$700,000	<b>Total PROP L Recommended</b>	\$700,000

<b>SGA Project Number:</b>	228-901001	<b>Name:</b>	San Francisco Transportation Plan 2050+
<b>Sponsor:</b>	San Francisco County Transportation Authority	<b>Expiration Date:</b>	09/30/2026
<b>Phase:</b>	Planning/Conceptual Engineering	<b>Fundshare:</b>	46.75%

### Cash Flow Distribution Schedule by Fiscal Year

Fund Source	FY2024/25	FY2025/26	Total
PROP L EP-228	\$350,000	\$350,000	\$700,000

### Deliverables

1. Quarterly progress reports (QPRs) shall include % complete of the funded phase, % complete by task, work performed in the prior quarter, work anticipated to be performed in the upcoming quarter, and any issues that may impact schedule, in addition to all other requirements described in the Standard Grant Agreement.

2. Task 3 Outreach and Public Involvement: Upon completion (anticipated June 2025), Sponsor shall provide final outreach report.

3. Task 4 Travel Modeling: Upon completion (anticipated June 2025), Sponsor shall provide assumptions memo, output data tables and summaries, and analysis memo.

4. Task 5 Revenue and Funding Scenarios: Upon completion (anticipated September 2025), Sponsor shall provide final revenue forecasts for investment and vision scenarios.

5. Upon completion of study (anticipated March 2026), Sponsor shall present the final report to the Transportation Authority Community Advisory Committee and Board for final approval.

### Special Conditions

1. The recommended allocation is contingent upon approval of the Prop L Citywide/Modal Planning 5-Year Prioritization Program and amendment of the Prop L Strategic Plan Baseline, which is a separate item on this agenda.

Metric	PROP AA	TNC TAX	PROP L
Actual Leveraging - Current Request	No PROP AA	No TNC TAX	53.02%
Actual Leveraging - This Project	No PROP AA	No TNC TAX	53.02%

# San Francisco County Transportation Authority Allocation Request Form

<b>FY of Allocation Action:</b>	FY2024/25
<b>Project Name:</b>	San Francisco Transportation Plan 2050+
<b>Primary Sponsor:</b>	San Francisco County Transportation Authority

## EXPENDITURE PLAN SUMMARY

<b>Current PROP L Request:</b>	\$700,000
--------------------------------	-----------

1) The requested sales tax and/or vehicle registration fee revenues will be used to supplement and under no circumstance replace existing local revenues used for transportation purposes.

Initials of sponsor staff member verifying the above statement:
SC

## CONTACT INFORMATION

	Project Manager	Grants Manager
<b>Name:</b>	Suany Chough	Mike Pickford
<b>Title:</b>	Assistant Deputy Director for Planning	Principal Transportation Planner
<b>Phone:</b>	555-5555	(415) 522-4822
<b>Email:</b>	suany.chough@sfcta.org	mike.pickford@sfcta.org