

# 5 Prop L Requests



San Francisco  
County Transportation  
Authority

San Francisco County Transportation Authority Board  
Agenda Item 5  
February 11, 2025

# Predictive Arrival/Departure System (PCJPB) Construction

**Prop L request: \$2,400,000**

**Total Cost: \$6,636,455**

- Replace existing system with an upgraded, industry-standard solution for train arrival and departure predictions
- Integrate the new system with passenger and operator interfaces for more accurate and versatile real-time train information
- Open for use by September 2027



# Bicycle Facility Maintenance (SFMTA) Construction

**Prop L request: \$459,000**

**Total Cost: \$459,000**

- Maintain bicycle facilities to preserve their safety features
- Restripe existing facilities, including green bike lanes and bike boxes, and replace traffic delineators that buffer bike lanes from traffic
- Locations identified by SFMTA staff and public feedback
- Public can request maintenance via SF311
- Open for use by March 2027

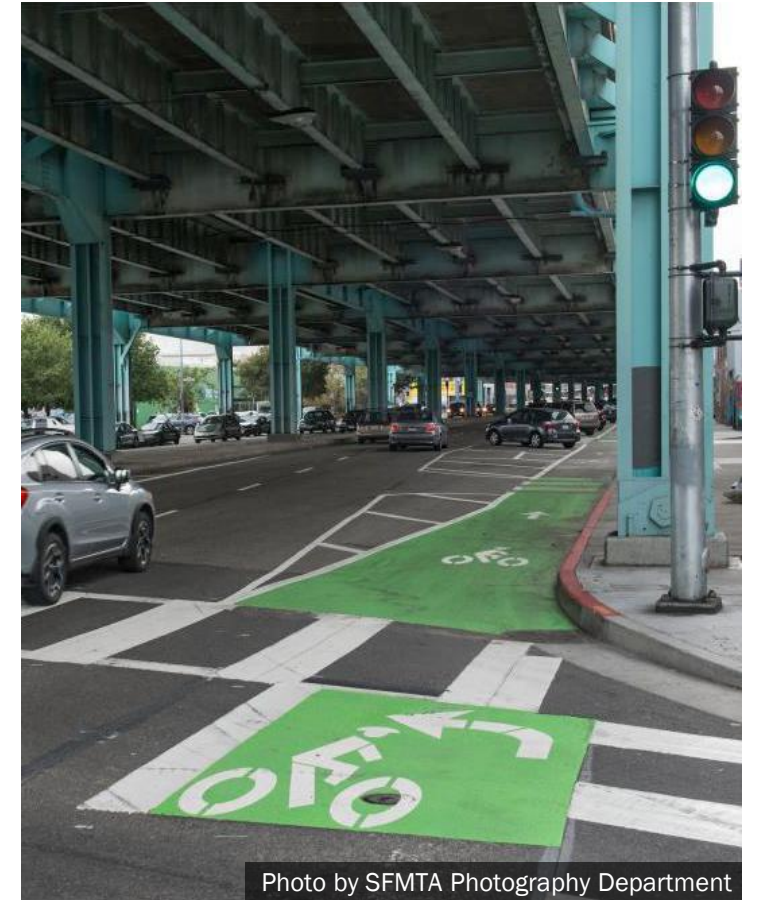


Photo by SFMTA Photography Department

# Curb Ramps and Subsidewalk Basements No. 3 (SFPW) Construction

**Prop L request: \$1,675,000**

**Total Cost: \$5,414,770**

- Construct 14 curb ramps at 6 intersections with sub-sidewalk basements in Districts 3 and 5
- Locations identified through public requests, SFPW inspections, and SFMTA identified locations to convert painted safety zones to permanent bulbouts
- Open for use by September 2026



# Duboce Triangle Slow Streets Study [NTP] (SFMTA) Planning

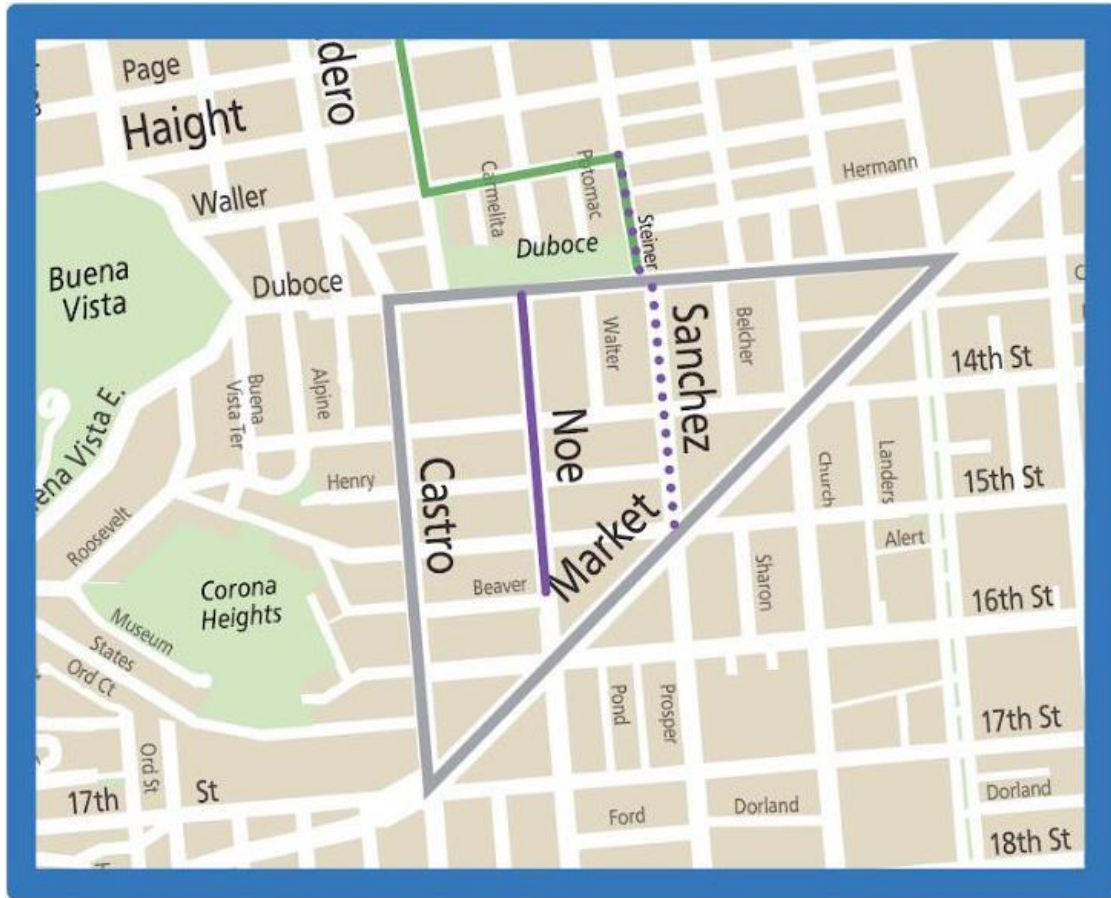
**Prop L request: \$250,000**

**Total Cost: \$250,000**

- Examine opportunities for north-south bike connections through Duboce Triangle neighborhood
- Assess converting Sanchez and Steiner into Slow Streets and explore corresponding changes to traffic circulation
- Includes outreach
- Present final report to the Board in Spring 2026



# Duboce Triangle Slow Streets Study [NTP] (SFMTA) Planning



## Legend

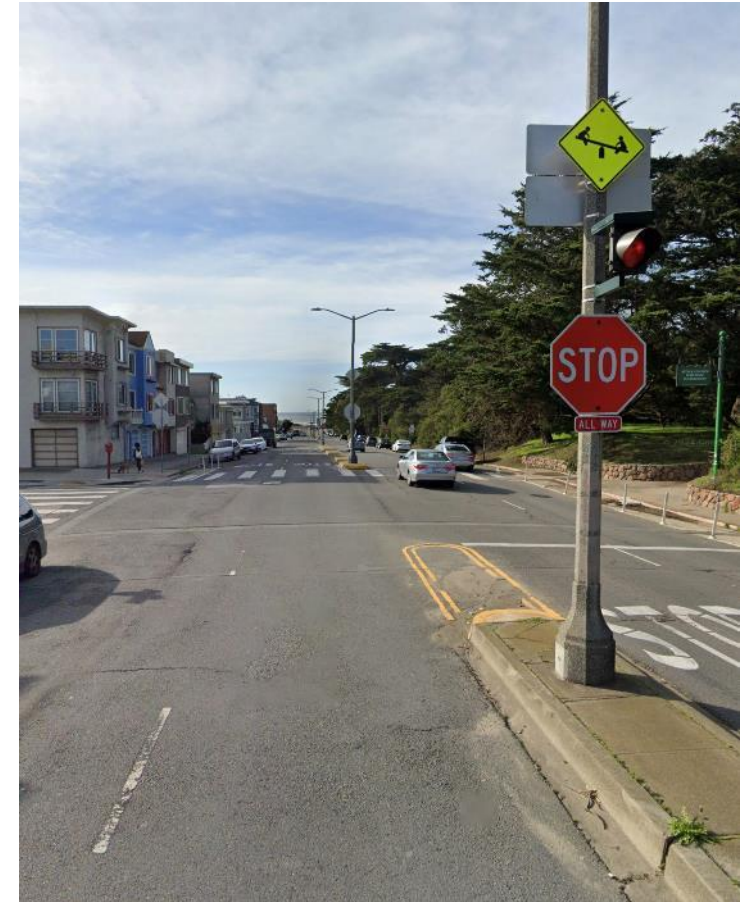
-  Duboce Triangle Neighborhood
-  Existing Slow Street
-  Potential Future Slow Street
-  The Wiggles Bicycle Route

# Lincoln Way Traffic Signals [NTP] (SFMTA) Design

**Prop L request: \$500,000**

**Total Cost: \$500,000**

- New traffic signals on Lincoln Way at 45th Avenue and La Playa Street to enhance traffic safety and improve right-of-way allocation
- Scope includes all necessary signal infrastructure including 12" signal heads and mast arms, signal poles, pedestrian countdown signals, accessible pedestrian signals, and related infrastructure such as curb ramps
- Open for use expected Summer 2029



# Thank you.

[sfcta.org/funding](https://sfcta.org/funding)  
[PropL@sfcta.org](mailto:PropL@sfcta.org)



San Francisco  
County Transportation  
Authority



[sfcta.org/stay-connected](https://sfcta.org/stay-connected)