

2018

DBE/LBE Upcoming Opportunity Overview and Networking Event



SAN FRANCISCO COUNTY TRANSPORTATION AUTHORITY
February 22, 2018

Presentation Agenda



1. Overview of SFCTA DBE/LBE Program
2. Description of upcoming opportunities
3. Procurement Q&A
4. Overview of SFCTA construction contracts
5. Construction Q&A
6. Networking



Presenters



- ▶ **San Francisco County Transportation Authority**
 - ▶ Eric Young, Senior Communications Officer
 - ▶ Lily Yu, Principal Management Analyst
 - ▶ Eric Cordoba, Deputy Director for Capital Projects
-



SFMTA
Municipal
Transportation
Agency

- ▶ **San Francisco Municipal Transportation Agency**
 - ▶ Sheila Evans-Peguese, Senior Contract Compliance Officer
-



- ▶ **San Francisco Public Works**
 - ▶ Jerad Weiner, Contracts and Grant Manager
-



METROPOLITAN
TRANSPORTATION
COMMISSION

- ▶ **Metropolitan Transportation Commission**
 - ▶ Luz Campos, Purchasing Procurement Specialist

Presentation Materials



- ▶ **Slide deck and attendees list will be posted to www.SFCTA.org/dbe after this event.**

The screenshot shows the San Francisco County Transportation Authority website. The header includes the text "San Francisco County Transportation Authority" and "PLAN. FUND. DELIVER." along with the agency logo. A navigation menu on the left lists various sections, with "DBE/LBE Program" highlighted. The main content area is titled "TRANSPORTATION AUTHORITY DBE/LBE PROGRAM" and contains the following information:

DISADVANTAGED BUSINESS AND LOCAL BUSINESS ENTERPRISES

It is the Policy of the Transportation Authority that Disadvantaged Business Enterprises (DBEs) and Local Business Enterprises (LBEs) shall have the maximum feasible opportunity to participate in the performance of contracts financed in whole or in part with Transportation Authority funds. The Transportation Authority and its employees shall not discriminate on the basis of race, national origin, color, religion, sex, sexual orientation, age, or disability in the award and performance of Transportation Authority contracts.

LBE Requirements:

1. Valid Business Registration Certificate from the Office of the Treasurer & Tax Collector
2. Evidence of maintaining a local working office in San Francisco for the past six months (e.g., utility bills, office lease, or office purchase agreement)

DBE Requirements:

- For professional services (e.g., architect/engineering), total income must be less than \$2.5 million
- For telecommunications services, total income must be less than \$5 million
- For goods/materials/equipment and general services suppliers, total income must be less than \$7 million

To apply:

SFCTA: Who we are



We plan, fund and deliver SF transportation projects

- ▶ Administer SF's half-cent sales tax for transportation
- ▶ Administer SF's \$10 vehicle registration fee for transportation
- ▶ Program manager for Transportation Fund for Clean Air
- ▶ SF Congestion Management Agency
- ▶ Treasure Island Mobility Management Agency



The Transportation Authority DBE/LBE Program



Major Elements:

- ▶ Develop a pool of qualified firms through certification
- ▶ Set goals for each contract
- ▶ Advertise and outreach
 - ▶ All procurements are posted at <http://www.sfcta.org/doing-business-us/available-contracting-opportunities>
- ▶ Hold pre-proposal conferences
- ▶ Monitor participation



Transportation Authority Funding Type and Certifications



FUNDING TYPE	ACCEPTED CERTIFICATIONS
Federal	<ul style="list-style-type: none"> ▶ DBE from California Unified Certification Program (CUCP): dot.ca.gov/hq/bep/ucp.htm
State	<ul style="list-style-type: none"> ▶ DBE from CUCP ▶ SBE and/or DVBE from California Department of General Services (DGS): dgs.ca.gov/pd
Local	<ul style="list-style-type: none"> ▶ DBE from CUCP ▶ SBE and/or DVBE from DGS ▶ DBE and/or LBE from the Transportation Authority: sfcta.org/dbe ▶ LBE from City and County of San Francisco: sfgov.org/cmd/LBE-CERTIFICATION ▶ LGBTBE from California Public Utilities Commission: http://www.cpuc.ca.gov/supplierdiversity/



2017 DBE/LBE/SBE Performance



DBE, LBE, and SBE Performance for the Transportation Authority's Vendor Contracts during 2017

	Amount	Percentage of Total Invoices Paid
Total Invoices Paid	\$10,658,276	100%
Total Paid to DBE firms	\$ 2,968,915	27.9%
Total Paid to LBE firms	\$ 1,997,153	18.7%
Total Paid to SBE firms	\$ 2,599,028	24.4%

The Transportation Authority DBE/LBE Program: DBE Requirements



Average gross annual receipts for the last three years not to exceed:

- ▶ \$2.5 million for professional services (e.g., architect/ engineering)
- ▶ \$3.5 million for trucking
- ▶ \$5 million for telecommunication services
- ▶ \$7 million for goods/materials/equipment/general services suppliers
- ▶ \$14 million for public works/construction



The Transportation Authority DBE/LBE Program: LBE Requirements



1. Provide valid and current Business Registration Certificate from the Office of the Treasurer & Tax Collector: sftreasurer.org/business-registration
2. Maintain a local working office in San Francisco for at least six months preceding submittal of application



Transportation Authority Notifications of Business Opportunities



- ▶ Sign up on our e-mail list for notification of future opportunities at www.sfcta.org/doing-business-us/
- ▶ Select 'Available Contracting Opportunities'

The screenshot shows a web browser window with the URL sfcta.us4.list-manage.com/subscribe?u=c35424dc2344c04935e12eb38&id=c229ffdf11. The page header includes the San Francisco County Transportation Authority logo and name. The main content area contains the following text:

Fill out the form below to subscribe to one or more Authority email newsletters. If you're already subscribed to other Authority newsletters, enter your email address and press the Subscribe to List button at the bottom of the form. On the following screen, the "you're already subscribed" message below your email address will contain a link to update your profile, where you can add or remove newsletter subscriptions.

All demographic questions are optional and are used to help us understand how well we do reaching different members of the San Francisco community.

Email Address

Transportation Authority DBE/LBE Program Contact



For questions regarding the
Transportation Authority's
DBE/LBE Program, please contact:

Lily Yu
Principal Management Analyst
415-522-4811
lily.yu@sfcta.org



Upcoming SFCTA Opportunities



SAN FRANCISCO COUNTY TRANSPORTATION AUTHORITY

Strategic Communications Services



- Project Name:** SFCTA/TIMMA On-Call Strategic Communications, Outreach Professional Services
- Description:** Provide consulting services to support the Transportation Authority's and TIMMA's agency-wide and project-specific communications functions on an on-call basis with one or more firms
- Estimated Contract:** SFCTA - \$450,000; TIMMA - \$180,000
- Funding Source:** Various, including Prop K, regional and federal funds
- Projected DBE Goal:** To be determined
- RFQ Issuance:** Spring 2018
- Project Schedule:** July 2018 - June 2021
- Project Contact:** Eric Young, eric.young@sfcta.org
- Service Specialties:** Strategic communications, outreach, media relations, opinion/market research

Performance Monitoring & Analysis Services



- Project Name:** Performance Monitoring & Analysis Services
- Description:** Provide multi-modal (roadway, transit, bike, pedestrian) performance monitoring and analysis services
- Estimated Contract:** \$150,000
- Funding Source:** Various, including Prop K, regional and federal funds
- Projected Goal:** To be determined
- RFP Issuance:** Spring 2018
- Project Schedule:** July 2018 - June 2020
- Project Contact:** Joe Castiglione, joe.castiglione@sfcta.org
- Service Specialties:** Provide performance monitoring and analysis services, including identifying performance data methods and sources, developing scripts to analyze data, and developing performance reports

Computer Network and Maintenance Services



Project Name: Computer Network and Maintenance Services

Description: Provide on-site and on-call technology assistance for our computer and telephone systems

Estimated Contract: \$685,000

Funding Source: Prop K funds

Projected Goal: To be determined

RFP Issuance: Spring 2018

Project Schedule: July 2018 to June 2021

Project Contact: Joe Castiglione, joe.castiglione@sfcta.org

Service Specialties: Network Maintenance, Communications Infrastructure Maintenance, Disaster Recovery Implementation, Enhanced VPN Remote Access, Hardware Maintenance and Upgrades, Financial Systems Integration, Software Licensing, Technology Expertise, Team Collaboration Tools

Toll Systems Integration Services to Support the Development of YBI and TI



- Project Name:** Treasure Island Tolling
- Description:** Tolling system integrator services – design, installation, testing and maintenance
- Estimated Contract:** \$9,600,000
- Funding Source:** Various, including Prop K, regional and federal funds
- Projected Goal:** To be determined
- RFP Issuance:** Fall 2018
- Project Schedule:** Design, Install and Test: January 2019 - January 2021
System Maintenance: January 2021 - January 2025
- Project Contact:** Eric Cordoba, eric.cordoba@sfcta.org
- Service Specialties:** Tolling system integration

Services to Support Autonomous Shuttle Piloting on YBI and TI



- Project Name:** Treasure Island Autonomous Shuttle Pilot
- Description:** System engineering services in support of Autonomous Vehicle (AV) shuttle system development, vehicle specification, vehicle procurement, service design, system integration, testing, and operation
- Estimated Contract:** Systems engineering services: \$150,000-\$200,000
Vehicle and Operation: \$250,000-\$300,000
- Funding Source:** Federal, Prop K, and private funds
- Projected Goal:** To be determined
- RFP Issuance:** Systems engineering services: Spring 2018
Vehicle procurement: Fall 2018
- Project Schedule:** Systems engineering services: Summer 2018 - Summer 2021
Vehicle procurement: Winter 2019 - Winter 2021
- Project Contact:** Eric Cordoba, eric.cordoba@sfcta.org
- Service Specialties:** AV shuttle system development, integration, and operation



SFMTA
Municipal
Transportation
Agency

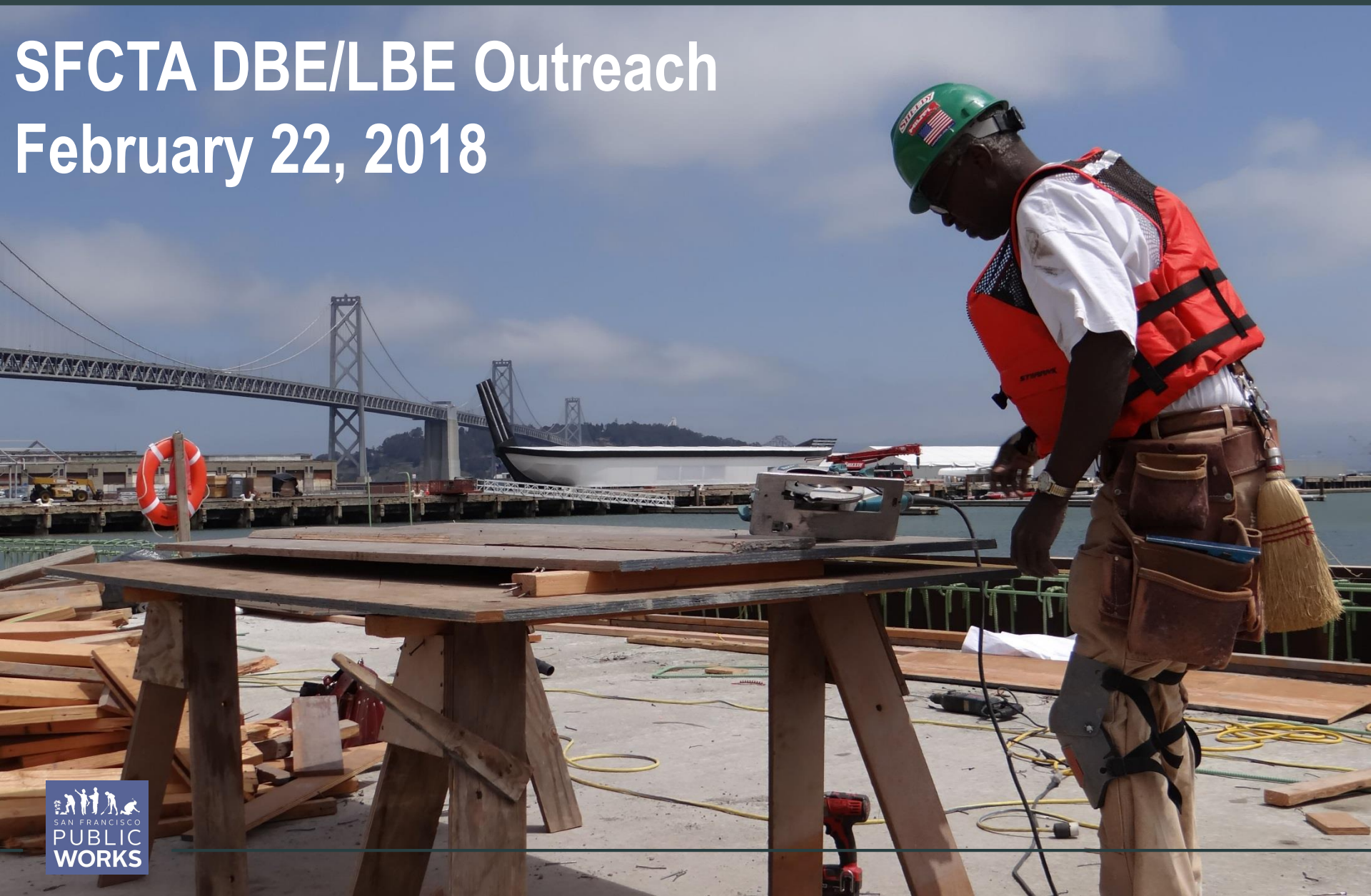
- ▶ **San Francisco Municipal Transportation Agency**
 - ▶ **Sheila Evans-Peguese, Senior Contract Compliance Officer**
-



-
- ▶ **San Francisco Public Works**
 - ▶ Jerad Weiner, Contracts and Grant Manager
-

San Francisco Public Works

SFCTA DBE/LBE Outreach
February 22, 2018



**Public Works
designs, manages
and builds
over \$4 billion in
construction projects
across
San Francisco**



Lots of projects!

Parks, recreation centers & playgrounds

Hospitals and health centers

Fire houses and police stations

Neighborhood libraries

Paving

Streetscapes

Transportation infrastructure

Navigation centers



Micro LBE Set Aside Program

Micro LBE construction set asides

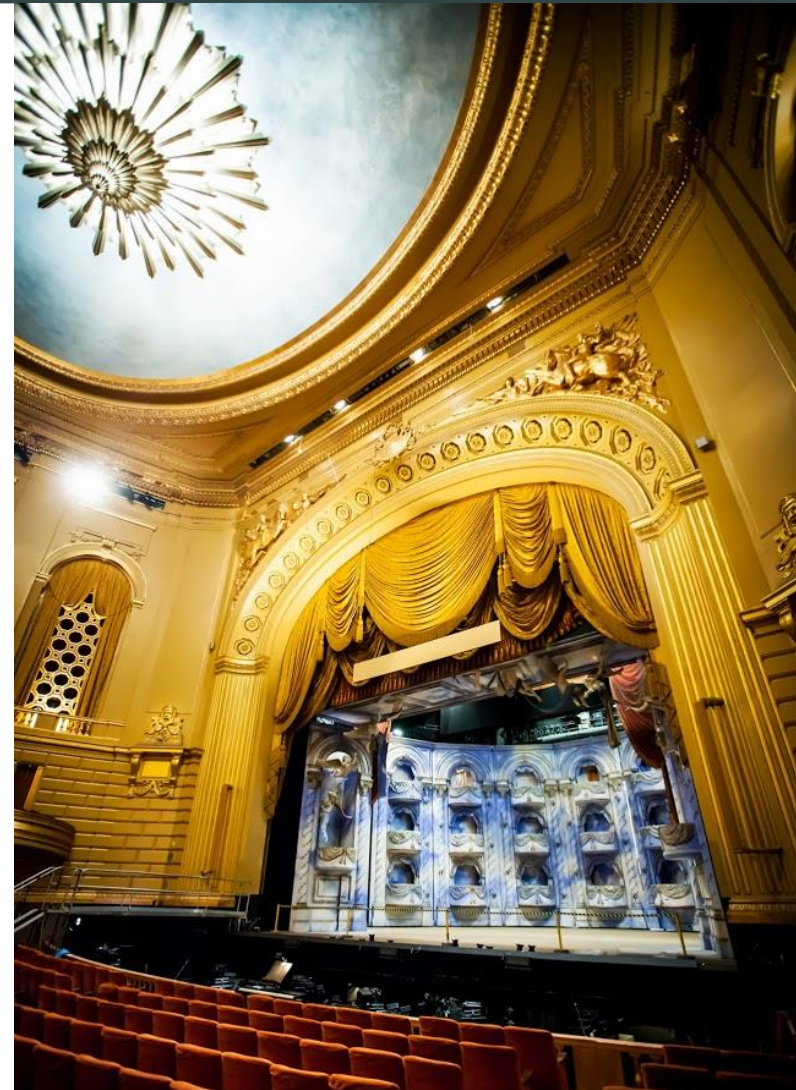
Handrails, bridge repairs, stairways,
retaining walls and more

Micro LBE professional services set asides

Cost estimating, environmental
contracting and more

Micro LBE trade packages

Moscone Center Expansion, Motorcycle
Police and Crime Lab, Animal Care and
Control Facility and more



Master As-Needed Contracts



Tree services

Concrete sidewalk repair projects

Electrical services

Roofing services

HVAC services

Boiler/Steam-fitting services

Scaffolding projects

Fire protection projects

Fencing projects

General building services

General engineering services

Electrical services for industrial facilities

Street Tree SF Contractor Opportunities

Arborists / Tree Care / Cement Watering / Landscape / Traffic Control

Current Opportunities

M01 – Master As-Needed Concrete Sidewalk Repair Contract - \$1M

M03 – Master As-Needed Tree Services [Micro-LBE] - \$500K

M04 – Master As-Needed Tree Services - \$1M

M11 – Master As-Needed Tree Services [Micro-LBE] - \$1M

M12 – Master As-Needed Tree Services – \$2M

Future Opportunities

Watering / Landscaping contract

Concrete slicing / sidewalk repair and hazard mitigation contract



Contractor Resources

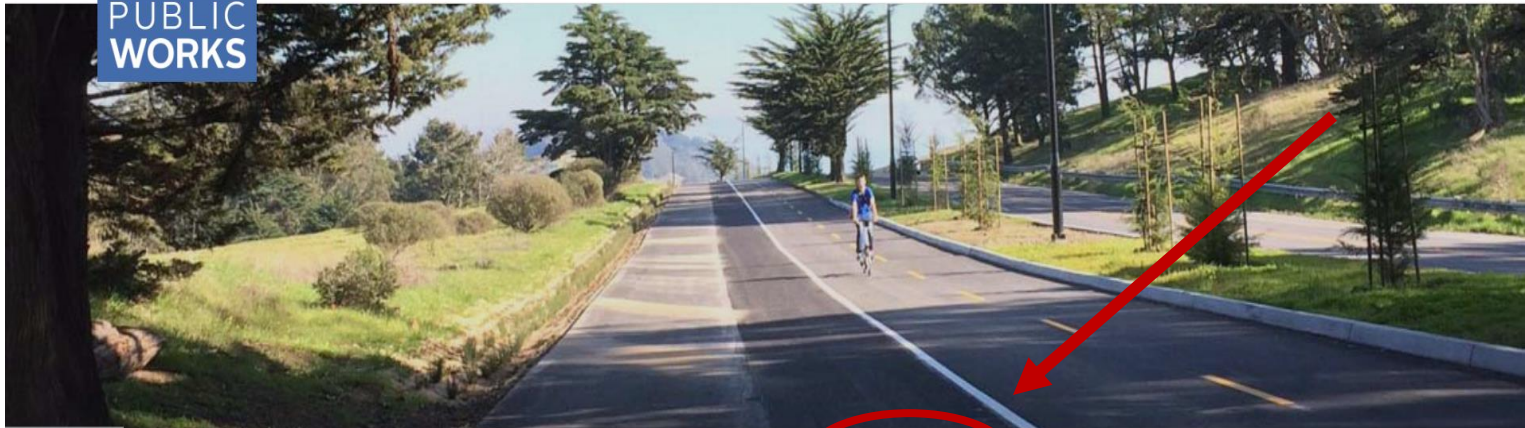
www.sfpublicworks.org



Search...



[About Us](#) [Get Involved](#) [Projects](#) [Services](#)



POPULAR

[Contact 311](#) [Permits](#) [Street Sweeping](#) [Food Trucks](#) [Contractor Resources](#) [Jobs](#)

HAPPENING

[Show all](#) [Events](#) [News](#) [Press Releases](#) [Public Meetings](#)



PRESS RELEASE: Community Celebration on Thursday for Bartlett Street Makeover 3/15/17



Refuse Rate Hearings - Wednesday, March 8 & 15, 2017, 8am, Room 400



PRESS RELEASE - SF Arbor Day 2017 Signature Tree to Honor Rose Pak - 3/15/17



PRESS RELEASE - Hearings Begin this Week On Recology's Refuse Rate Increase Plan - 3/7/17



PRESS RELEASE - Love Our City: Volunteers to Clean and Green District 4 Neighborhoods - 2/24/17



PRESS RELEASE - Community Clean Team Returns Saturday for a Robust 2017 Season - 1/27/17



Thank you!



Visit our table



www.sfpublicworks.org





- ▶ **Metropolitan Transportation Commission**
 - ▶ Luz Campos, Purchasing Procurement Specialist

Q&A Session



SAN FRANCISCO COUNTY TRANSPORTATION AUTHORITY



Overview of SFCTA Construction Contract Procurements

- ▶ Eric Cordoba, Deputy Director for Capital Projects
-

Yerba Buena Island Westside Bridges

- ▶ David Dickinson, WMH Corporation
-

Yerba Buena Island Ramps (Phase 2) Southgate Road

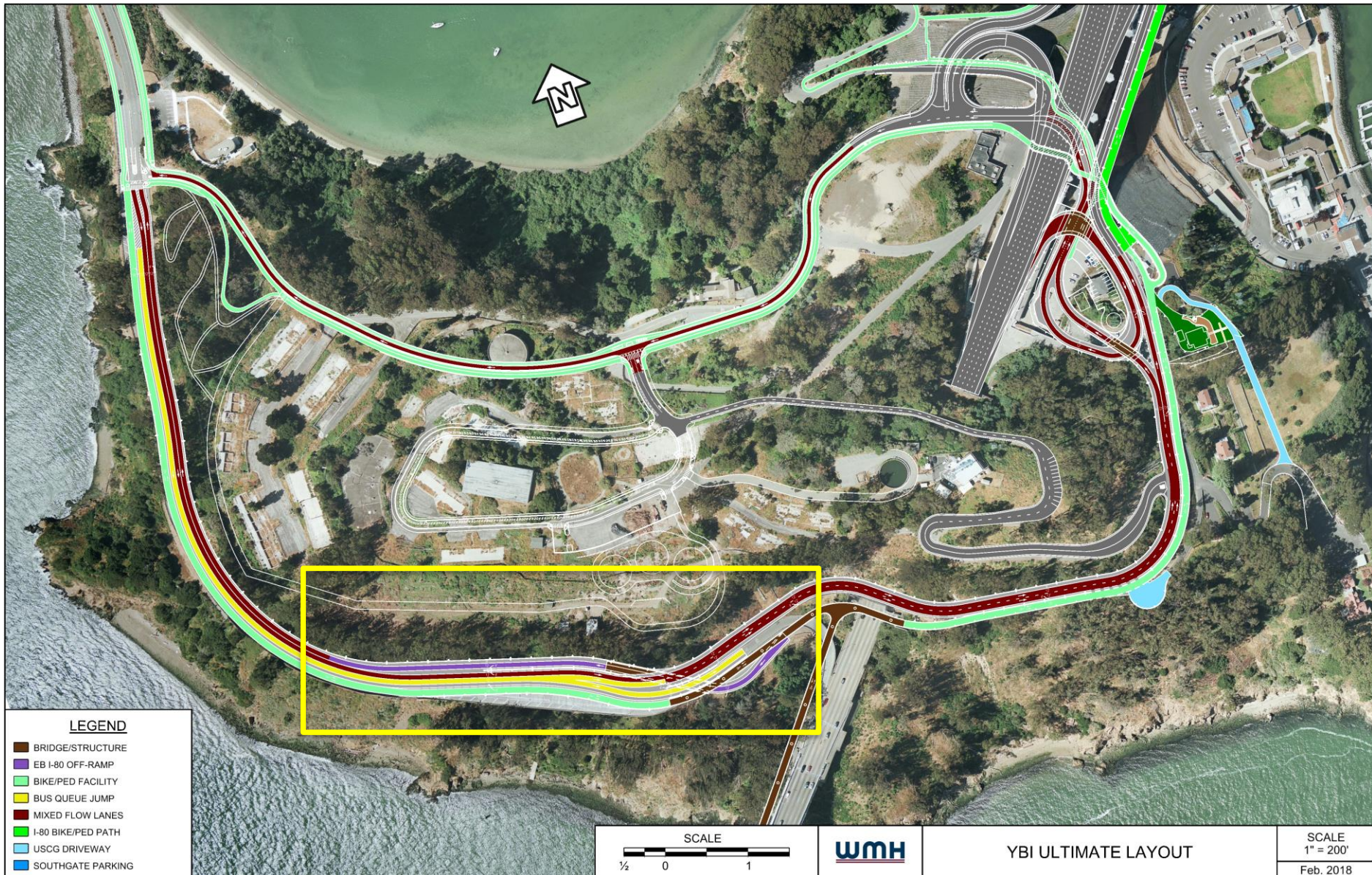
- ▶ Mike Lohman, HDR Engineering, Inc.
-

CM/GC Contractor Services for YBI Westside Bridges Retrofit Project



- Project Name:** Yerba Buena Island (YBI) Westside Bridges Retrofit
- Description:** Construction Manager/General Contractor (CM/GC) contractor services
- Estimated Contract:** Preconstruction Services - \$720,000; Construction - \$48 million
- Funding Source:** Federal Highway Bridge Program and State Prop 1B Funds
- Projected Goal:** DBE goal will be established near the end of Final Design
- RFQ Issuance:** April 2018 (anticipated)
- Project Schedule:** Preconstruction Services: June 2018 - December 2019
Construction: January 2020 - Summer 2021
- Project Contact:** Eric Cordoba, eric.cordoba@sfcta.org
- Service Specialties:** Construction management and construction of: bridge, bridge retrofit, concrete box culvert, retaining walls, bridge demolition, roadway realignment

Project Location



LEGEND

- BRIDGE/STRUCTURE
- EB I-80 OFF-RAMP
- BIKE/PED FACILITY
- BUS QUEUE JUMP
- MIXED FLOW LANES
- I-80 BIKE/PED PATH
- USCG DRIVEWAY
- SOUTHGATE PARKING

SCALE



wmh

YBI ULTIMATE LAYOUT

SCALE

1" = 200'

Feb. 2018



Project Setting



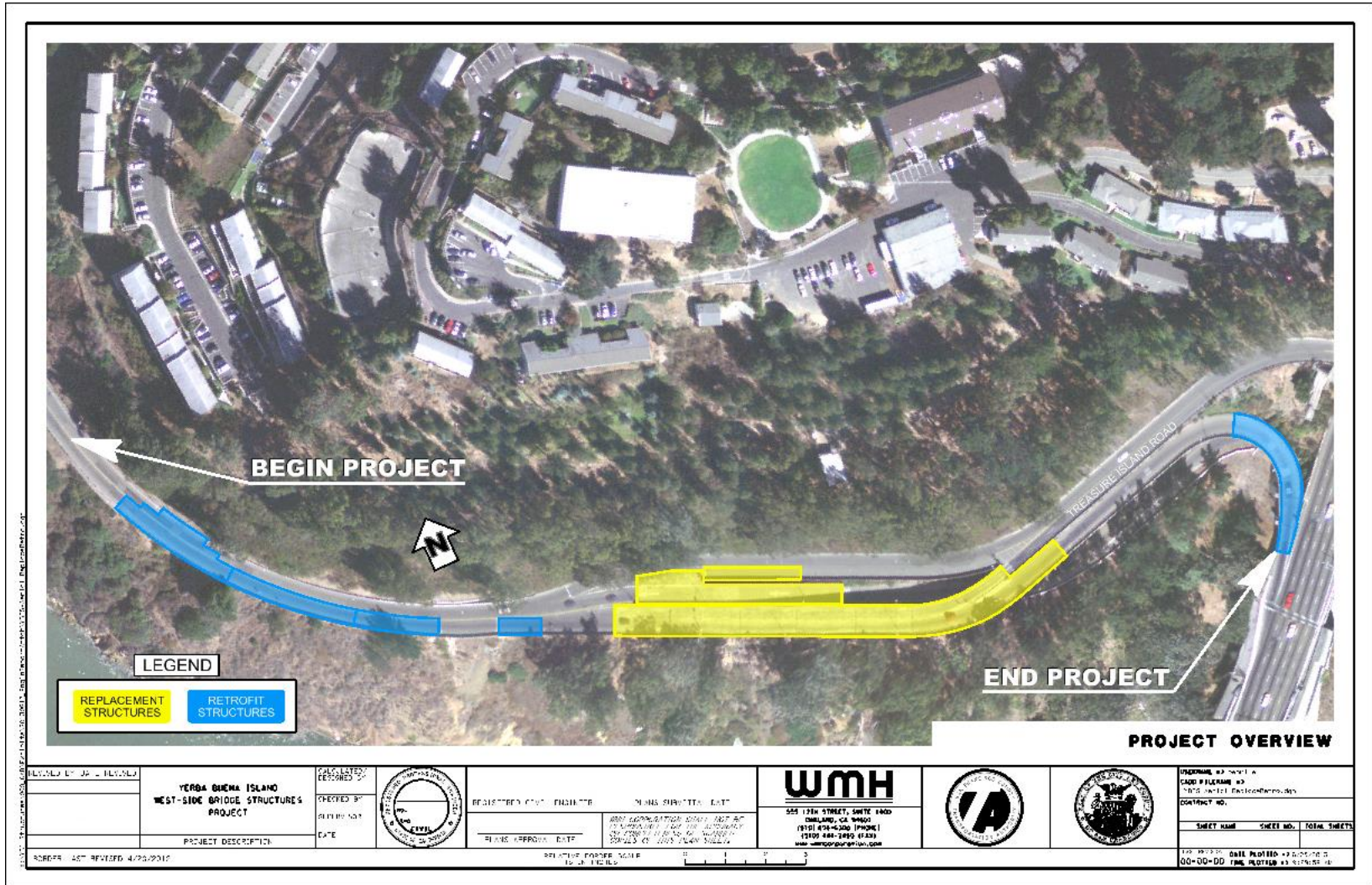
Site Conditions – Treasure Island Road



- ▶ Steep Terrain
- ▶ Limited Access



Seismic Strategy – Retrofit & Replacement



DRAWN BY: J. L. BROWN CHECKED BY: J. L. BROWN DATE: 4/20/2010	YERBA BUENA ISLAND WEST-SIDE BRIDGE STRUCTURES PROJECT		REGISTERED CIVIL ENGINEER JAMES STROUT, EIT 4000 CALIFORNIA STREET, SUITE 400 SAN FRANCISCO, CA 94116 (415) 778-4300 (PHONE) (415) 441-1990 (FAX) www.wmh-engineering.com				ORDERING # 00000000 CADD # 00000000 CONTRACT NO. SHEET NAME SHEET NO. TOTAL SHEETS 00-00-00
---	---	--	---	--	--	--	---

PROJECT: 457 REVISED: 4/20/2010

RELATIVE PAPER SCALE: 1" = 100'

Structure No. 1 (Retrofit)



Photo 1: General view of deck.



Photo 2: Right elevation.

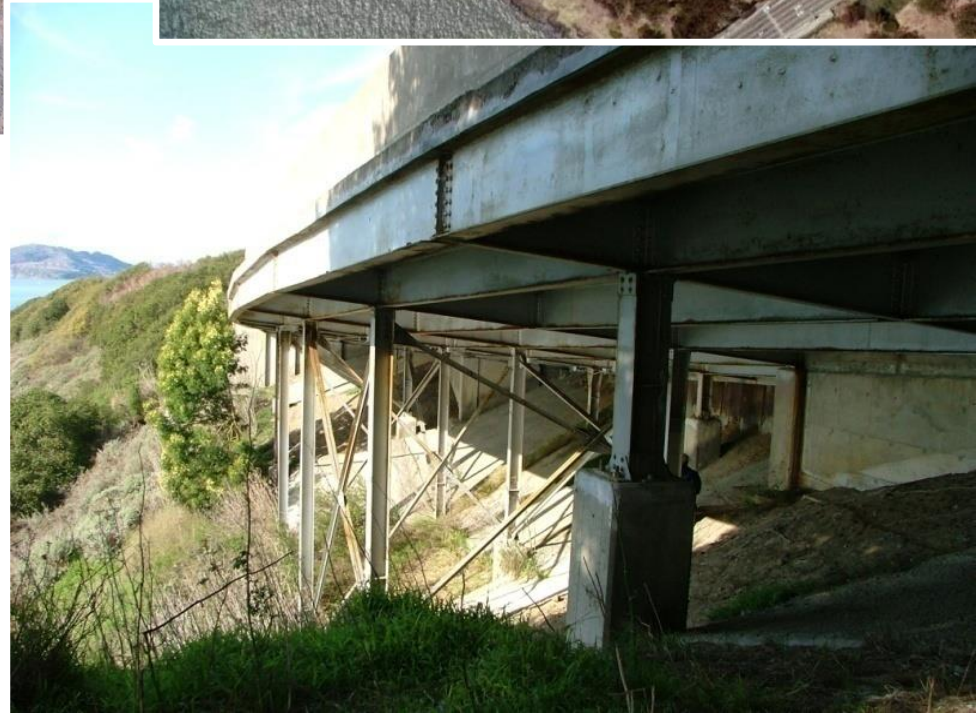
Site Conditions – Retrofit Bridges



- ▶ Steep Terrain
- ▶ Erosion / Slides



Structure No. 4 (Retrofit)



Structure No. 7A / 7B (Retrofit)



Structure No. 8 (Retrofit)



Site Conditions – Replacement Structures





Structure 2 (Demolish)



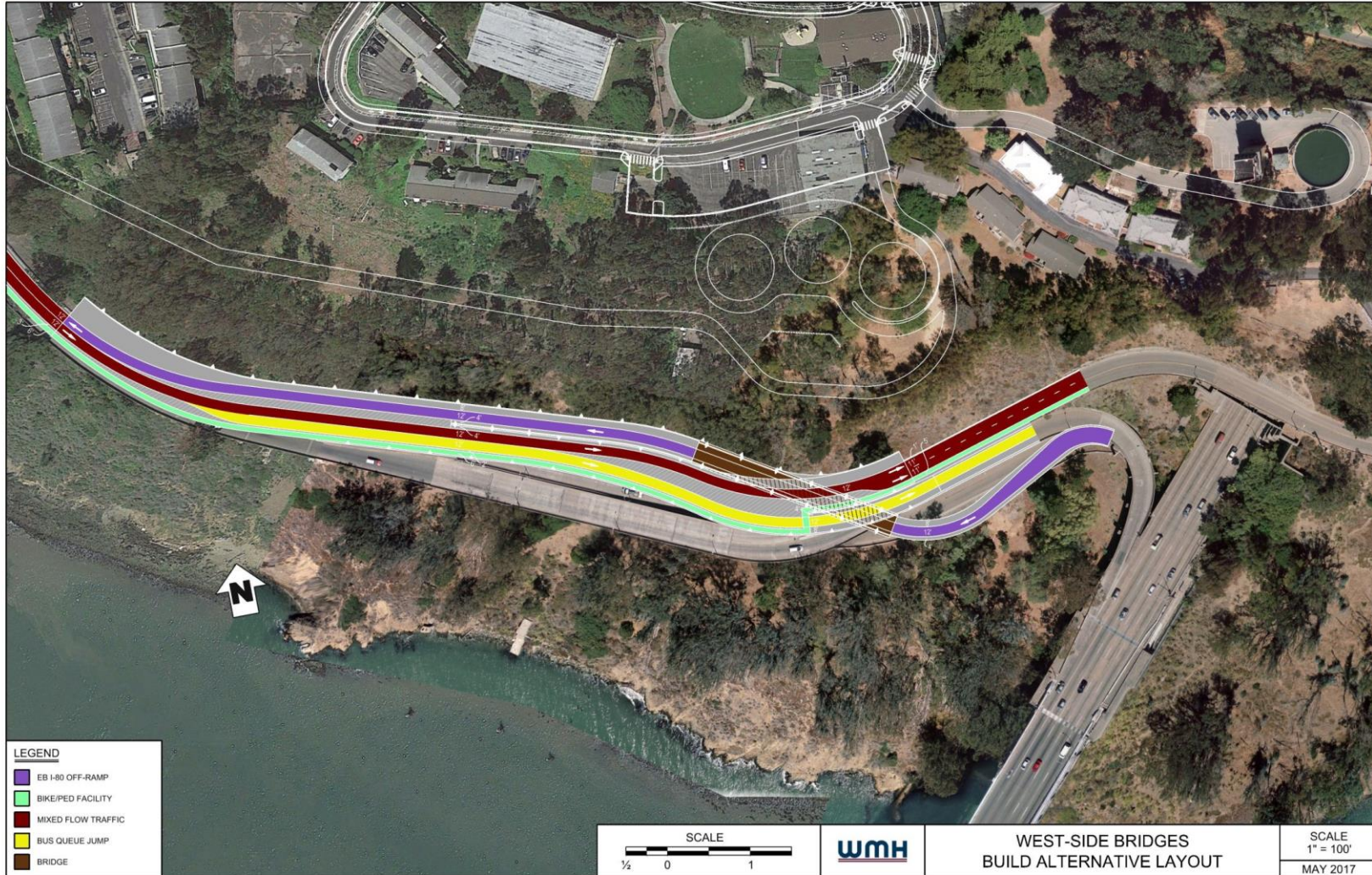
Structure 3 (Demolish)



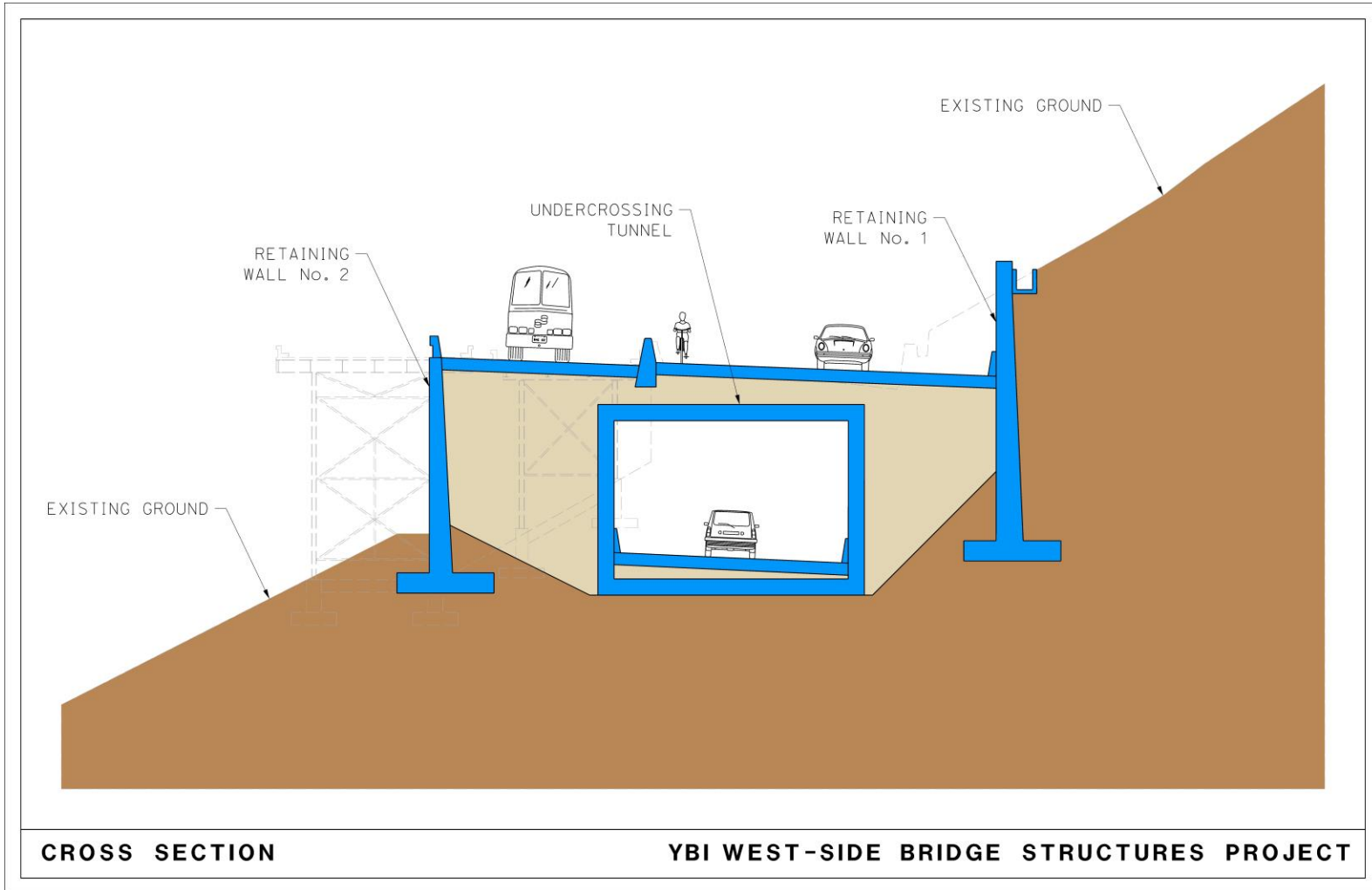
Structure 6 (Demolish)



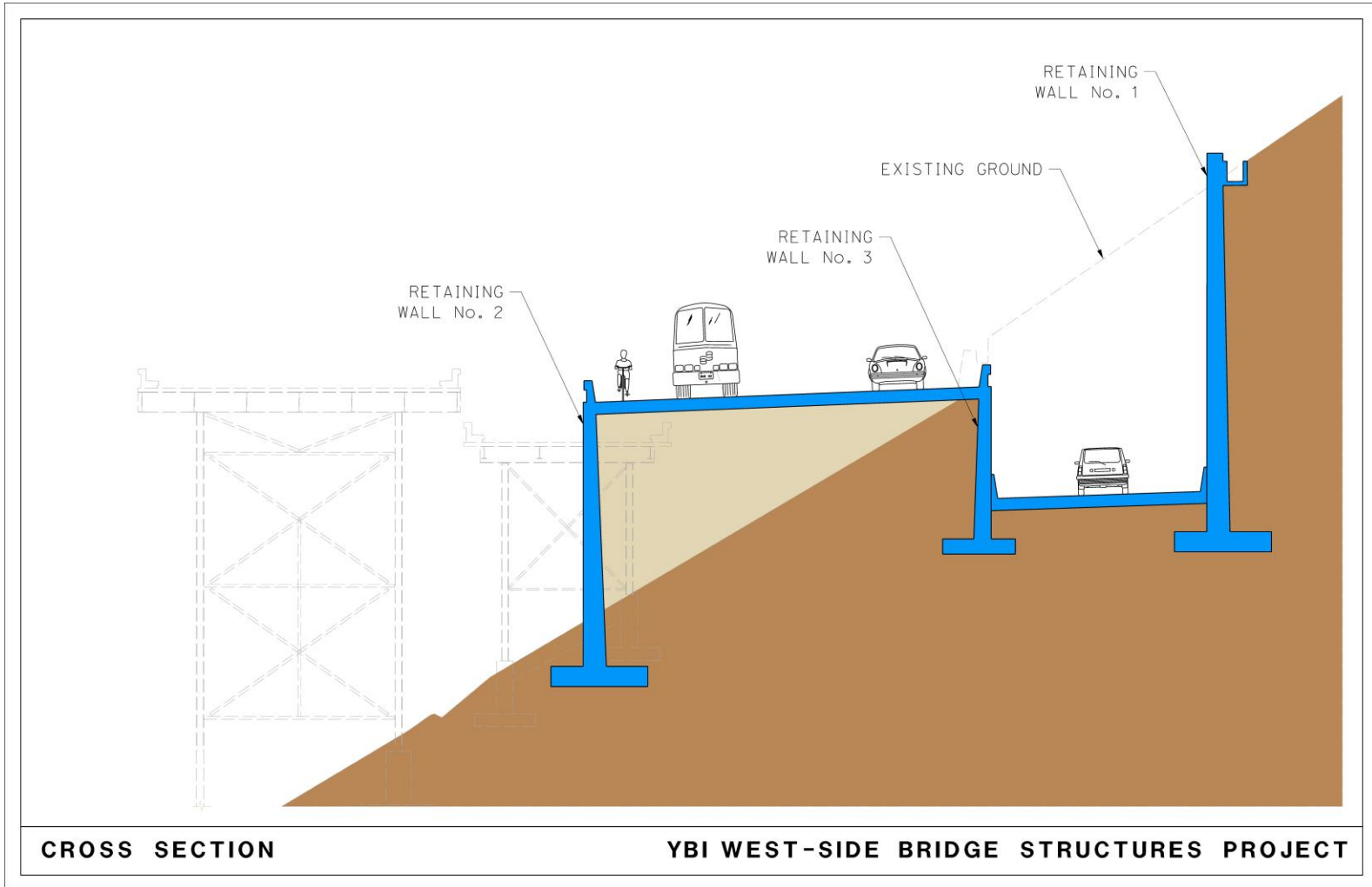
Replacement Project



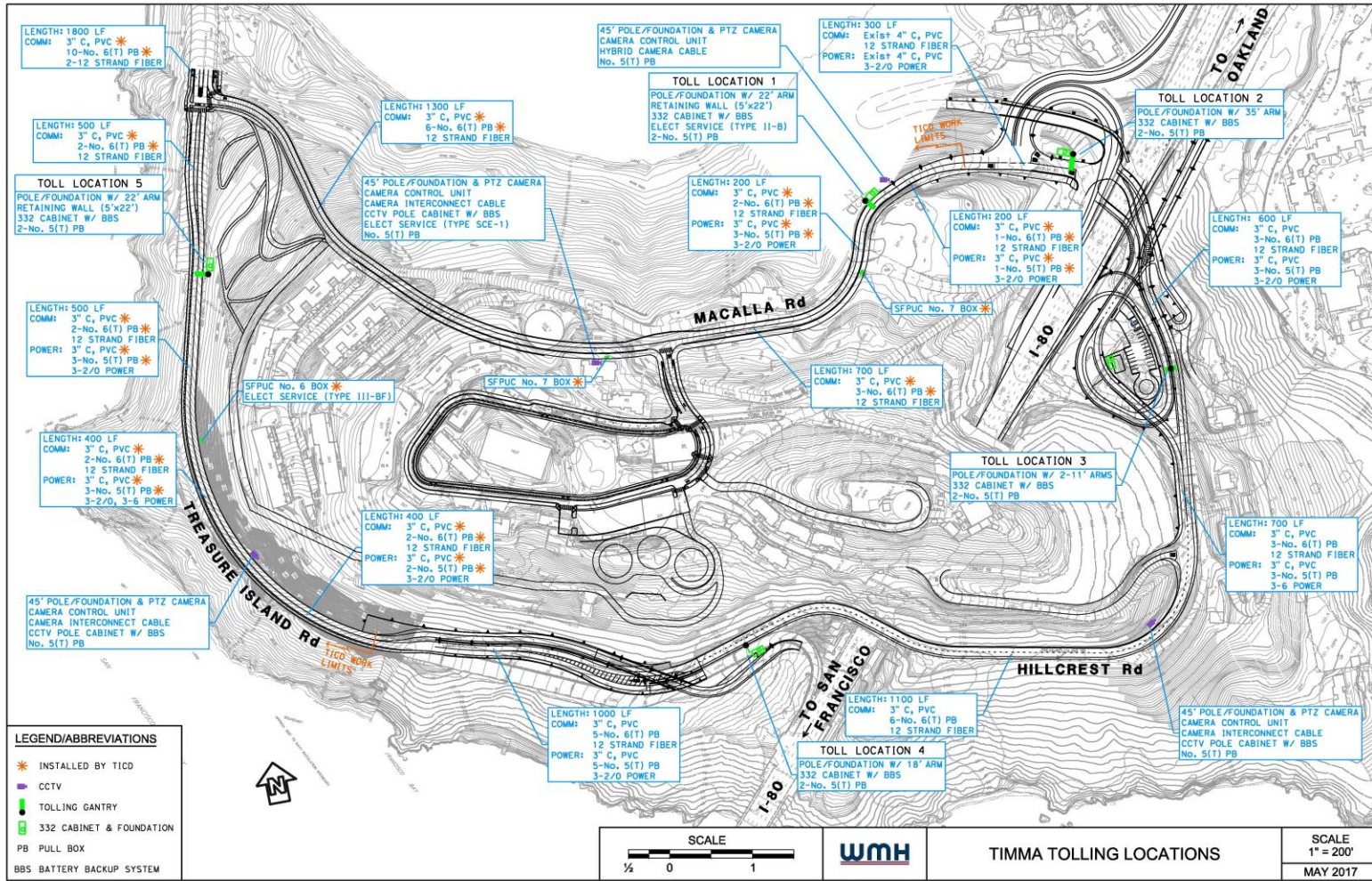
Replacement Project



Replacement Project



TIMMA Tolling



Road Closures to Expedite Construction



- ▶ Close Westside I-80 Ramps
- ▶ Close Treasure Island Road between Macalla Road and Forest Road Intersections



Project Challenges that warrant CMGC Delivery



- ▶ Geotechnical – Unstable Soil Swale
- ▶ Steep terrain – Construction Access
- ▶ Complex Bridge/Wall Foundation Construction
- ▶ Rock Anchor (110' long) Tie-back Retaining Walls
- ▶ Environmental constraints – Birds, Plants, etc.
- ▶ Storm water - proximity to SF Bay
- ▶ Cost Containment



Construction Contract for Southgate Road



- Project Name:** Yerba Buena Island (YBI) - Southgate Road Realignment
- Description:** Construction contract for YBI Southgate Road Realignment
- Estimated Contract:** \$24 million Estimated Construction Costs
- Funding Source:** Federal Highway Bridge Program, State Prop 1B and Bay Area Toll Authority (BATA) funds
- Projected DBE Goal:** DBE goal will be established near the end of Final Design
- Advertisement:** Fall 2018
- Project Schedule:** Early 2019 to Early 2020
- Project Contact:** Eric Cordoba, eric.cordoba@sfcta.org
- Service Specialties:** Full construction services



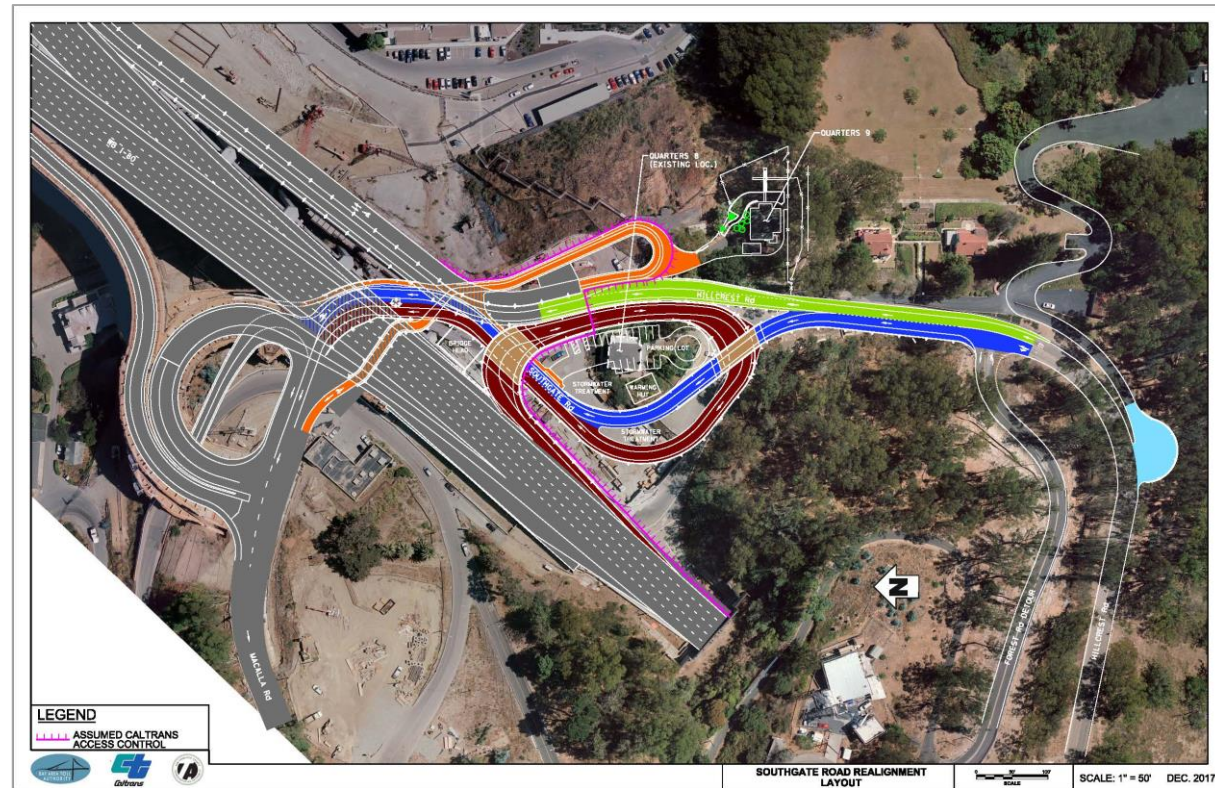
YBI I-80 Southgate Interchange



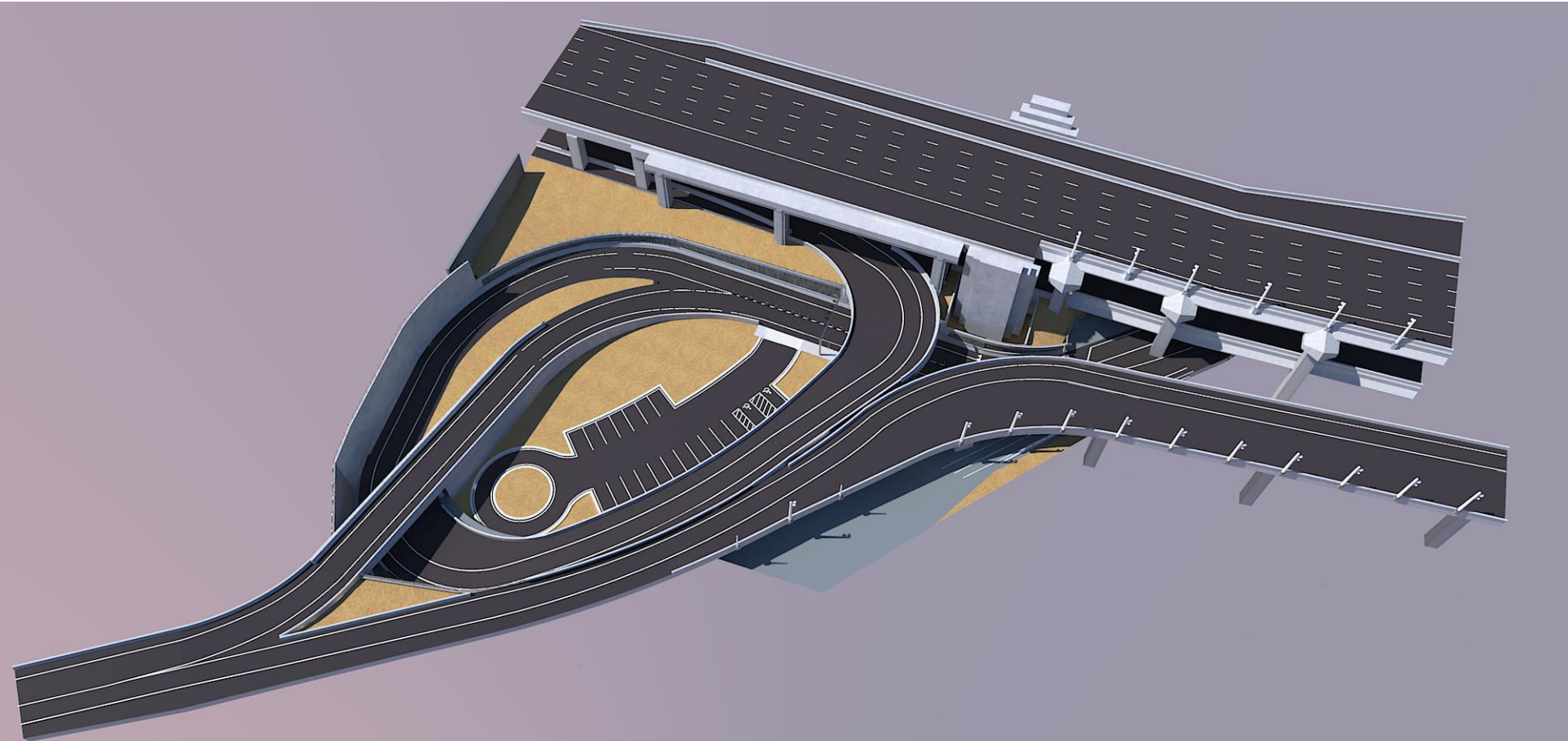
YBI I-80 Southgate Interchange



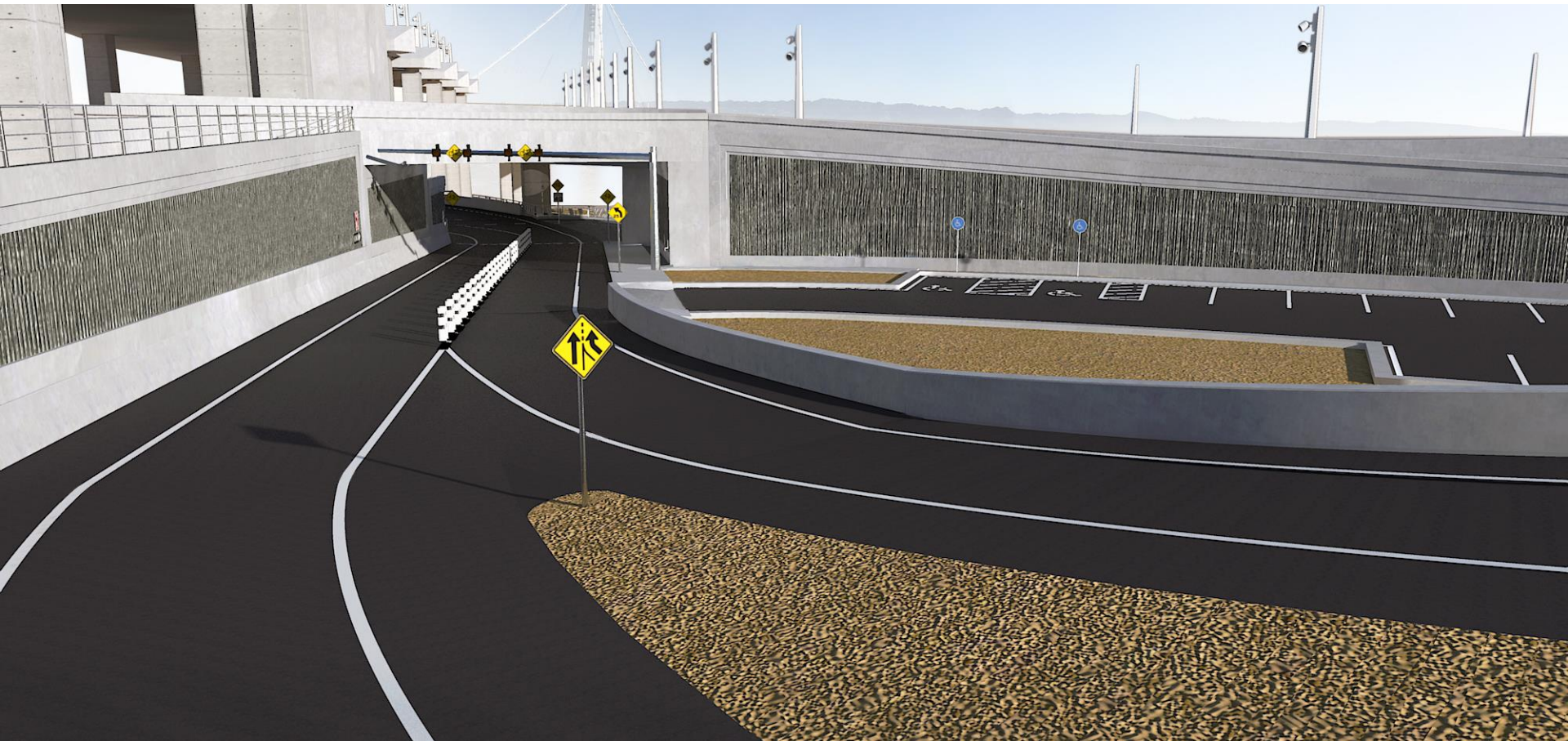
- ▶ Grade separate traffic movements
- ▶ 2 new bridges and 13 retaining walls
- ▶ Construction Estimate: \$24M
- ▶ Total Project Estimate: \$36.4M



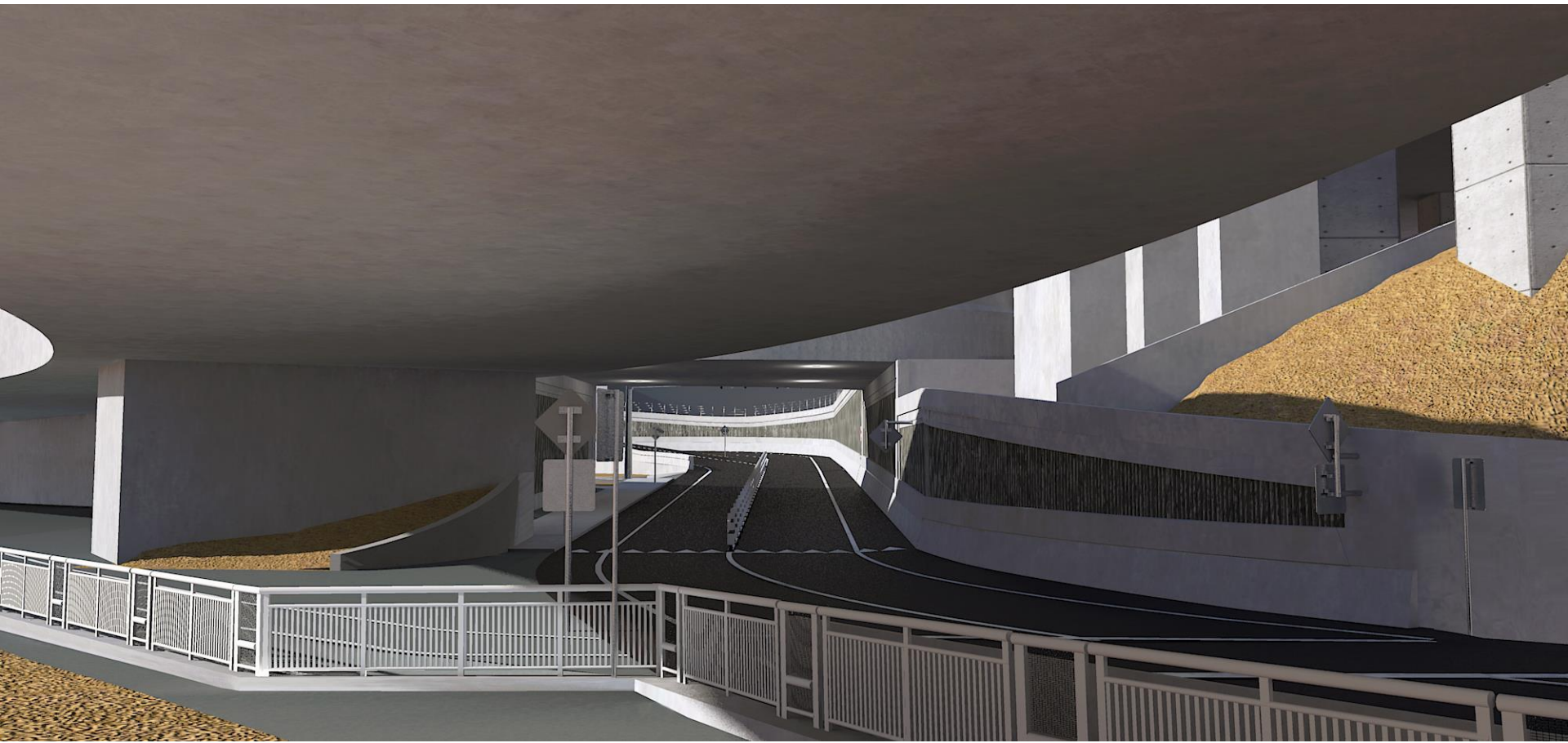
YBI I-80 Southgate Interchange



YBI I-80 Southgate Interchange



YBI I-80 Southgate Interchange



YBI I-80 Southgate Interchange

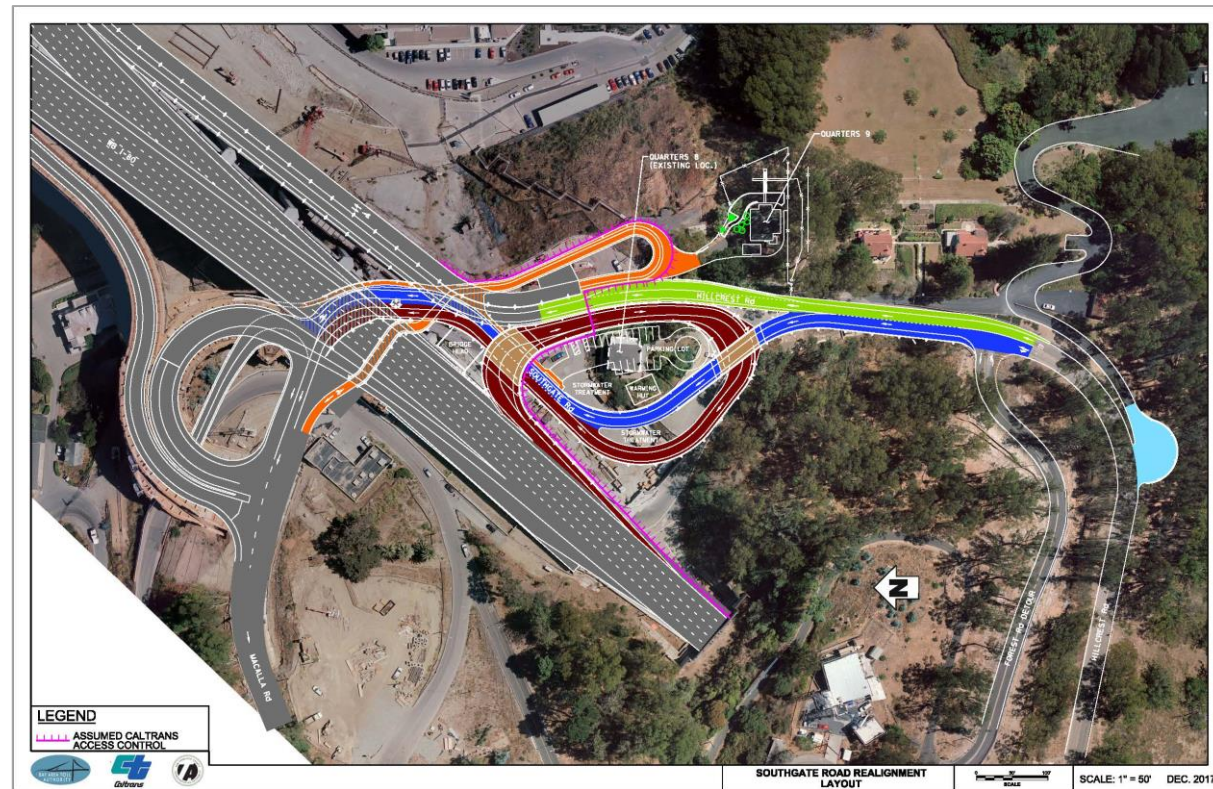


▶ Funding:

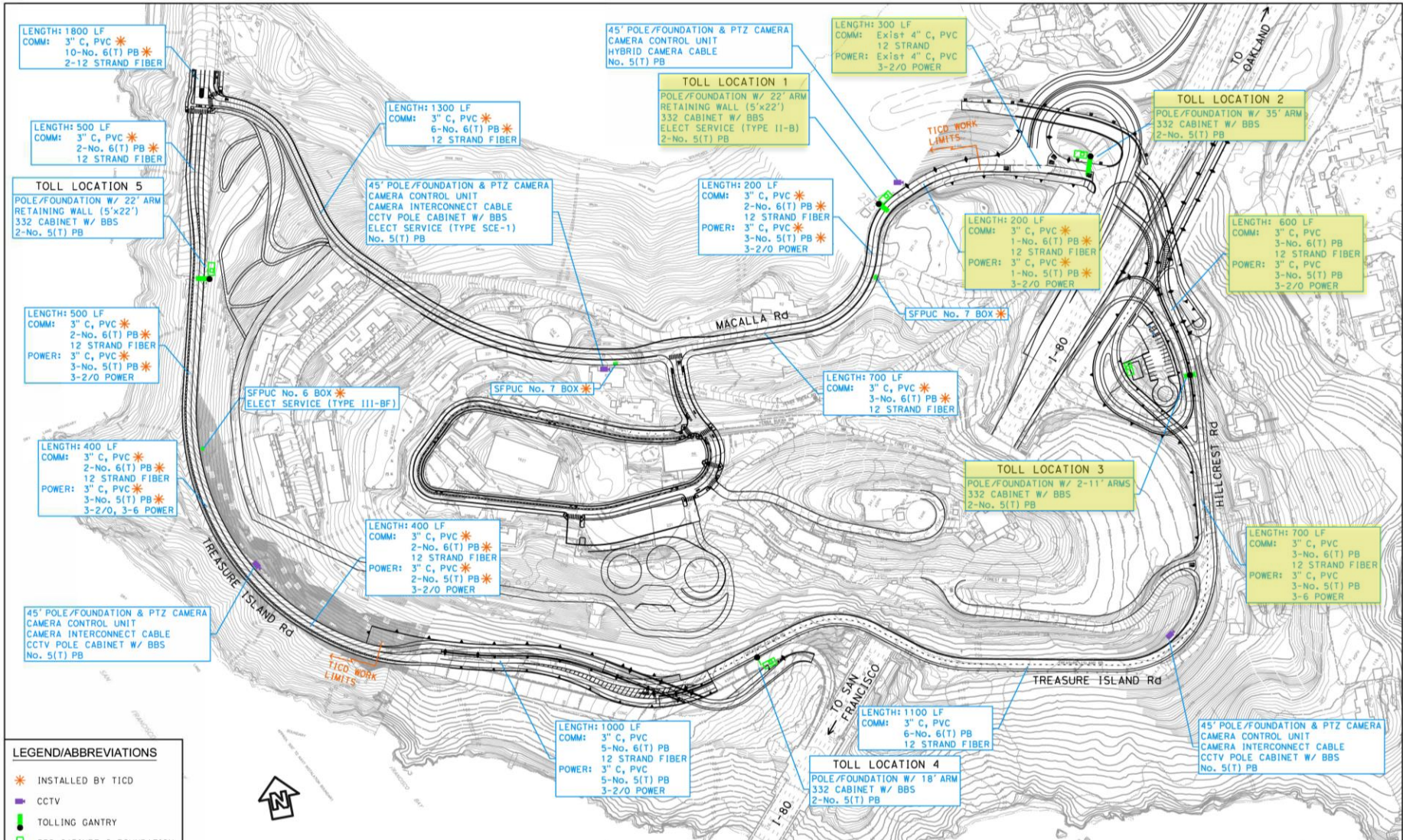
- ▶ HBP: \$27.75M
- ▶ Prop 1B: \$2.26M
- ▶ BATA: \$6.37M
- ▶ Total: \$36.4M

▶ Schedule

- ▶ Environ. Reval: August 2018
- ▶ Bid: Fall 2018
- ▶ Award: Late Fall 2018
- ▶ Construction: Early 2019 – early 2020

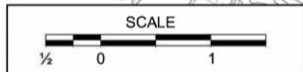


YBI I-80 Southgate Interchange



LEGEND/ABBREVIATIONS

- ✱ INSTALLED BY TICO
- CCTV
- TOLLING GANTRY
- 332 CABINET & FOUNDATION
- PB PULL BOX
- BBS BATTERY BACKUP SYSTEM



TIMMA TOLLING LOCATIONS

SCALE
1" = 20'
MAY 2017

Q&A Session



SAN FRANCISCO COUNTY TRANSPORTATION AUTHORITY

Thank you

Presentation online at:
www.SFCTA.org/contracting



SAN FRANCISCO COUNTY TRANSPORTATION AUTHORITY