

Yerba Buena Island Bicycle/Pedestrian Vista Point

TIMMA Committee
Agenda Item 5



SAN FRANCISCO COUNTY TRANSPORTATION AUTHORITY

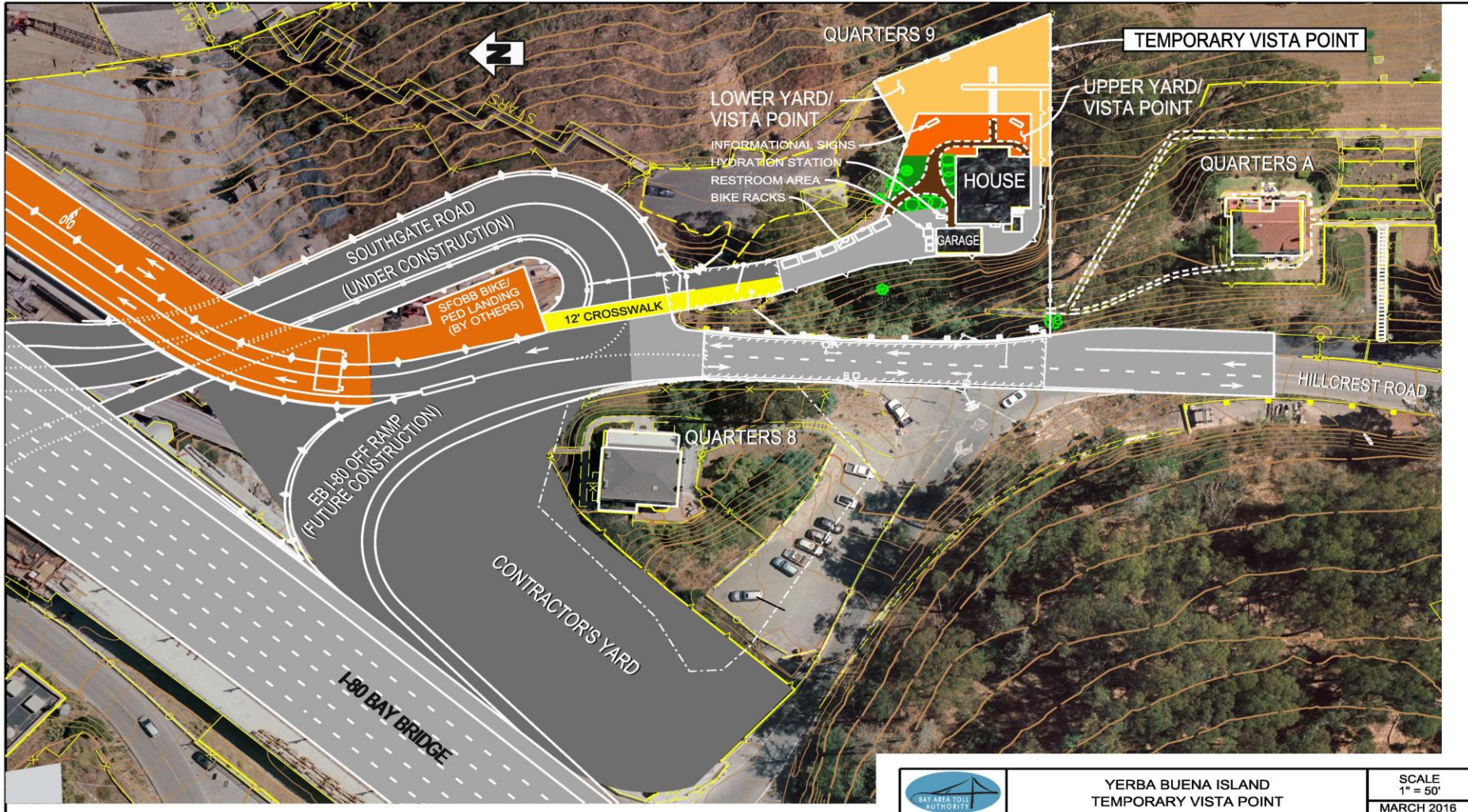
April 18, 2017



Background of Bike/Ped Access to YBI

- SFOBB Bike/Ped Path opened to YBI Landing on October 23, 2016**
- Limited traffic calming elements installed on Hillcrest Road**
- Caltrans has extended the Bike/Ped Path hours on weekends**
- Caltrans plans to open Bike/Ped Path weekdays**

YBI Vista Point



YERBA BUENA ISLAND
TEMPORARY VISTA POINT

SCALE
1" = 50'
MARCH 2016



YBI Vista Point

- Constructed as part of YBI Ramps project**
- \$2M funded – BATA/Federal/State**
- Temporary facility while YBI/TI undergo major construction**
- Scheduled to Open May 2, 2017**
- Features bike racks, hydration station, benches, restrooms**
- Open the same hours as the SF0BB Bike/Ped Path**

YBI/TI Bicyclist/Pedestrian Access

- ❑ Major roadway construction on YBI/TI planned thru 2020
- ❑ Heavy truck traffic
- ❑ Road closures and detours ongoing
- ❑ No pedestrian facilities beyond Vista Point



Construction Projects: Q2 '17 - Q3 '19

CURRENT and FUTURE CONDITIONS

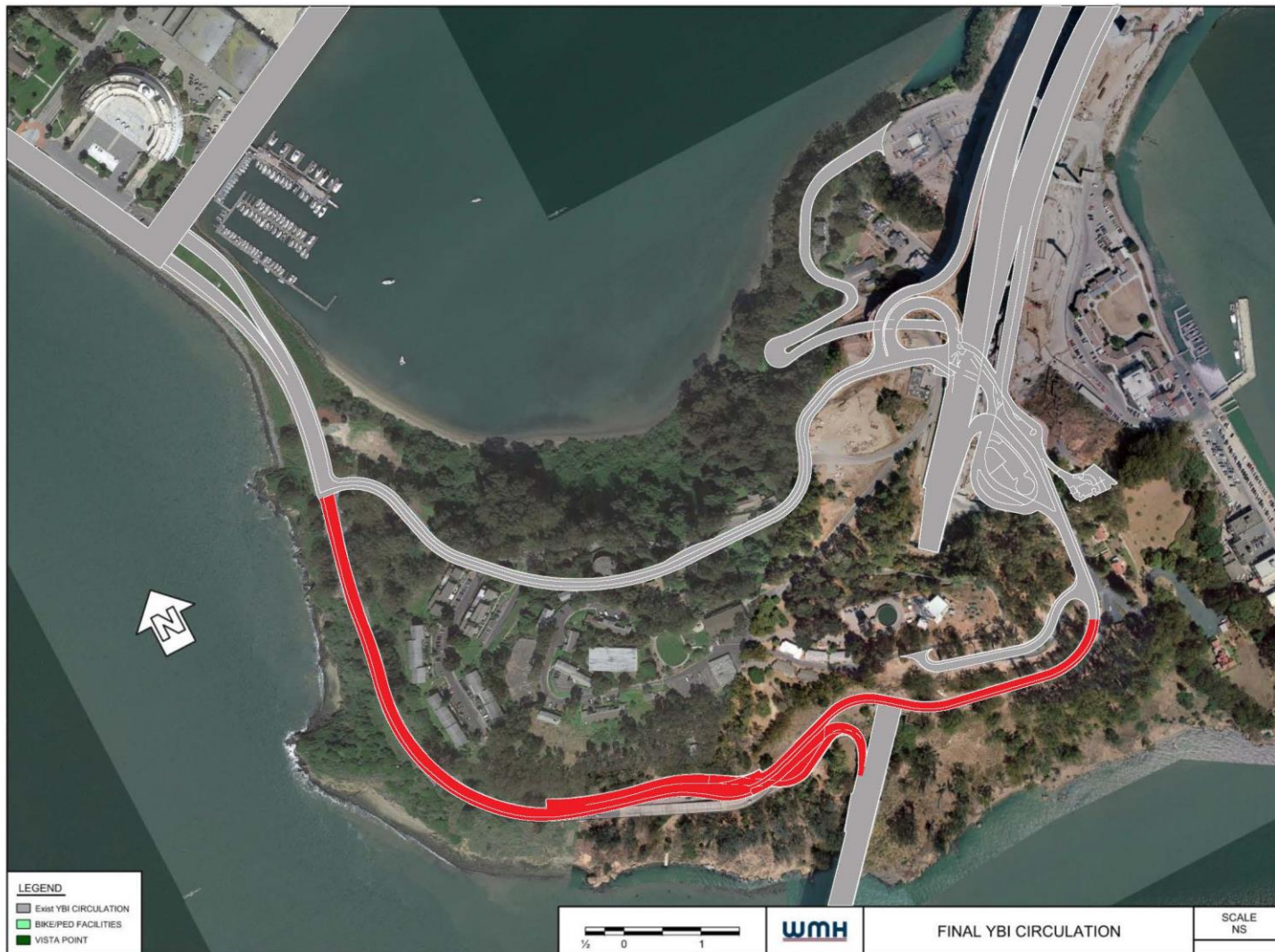
- ▶ Vista Point Under Construction
- ▶ Forest Road Detour
- ▶ Causeway - West Side
- ▶ Southgate Road
- ▶ Causeway - East Side
- ▶ Ave. of Palms/Clipper Cove Improvements



Construction Project: Q3 '19 - Q4 '20

FUTURE CONSTRUCTION

Westside Bridges
 Completed bike/ped facility on Macalla Road



Questions?



SAN FRANCISCO COUNTY TRANSPORTATION AUTHORITY