

Vision Zero Ramp Intersection Study: Phase 1

Board
Agenda Item 16



SAN FRANCISCO COUNTY TRANSPORTATION AUTHORITY

July 25, 2017

Project Overview

- ▶ **Funded by Prop K D6 NTIP Planning**
- ▶ **Purpose:**
 - ▶ **Improve traffic safety for all modes at SoMa freeway ramp intersections**
 - ▶ **Develop low-cost, near term improvement concepts**
- ▶ **Five freeway ramp intersections selected based on:**
 - ▶ **Location — South of Market Youth and Family Zone**
 - ▶ **Collision rates**
 - ▶ **Not included in other planning efforts**

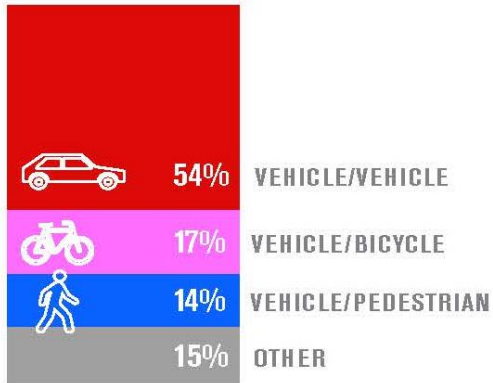


Study Area



Existing Conditions

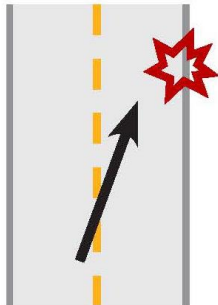
Analysis



The majority of collisions occurred between vehicles, including motorcycles. ("Other" includes bike-pedestrian, emergency vehicle, motorcycle only, and vehicle only.)



Collisions involving left-turning vehicles were the most common collision type overall.



All five fatal collisions appear to involve a vehicle losing control on or near a ramp, and most involved impact with a median or guardrail.



Pedestrian and Bicycle Infrastructure



Wayfinding Confusion



Lack of Visibility

Existing Conditions



- ▶ Multiple lanes of high-speed traffic
- ▶ Long pedestrian crossing distances
- ▶ Lack of signal visibility

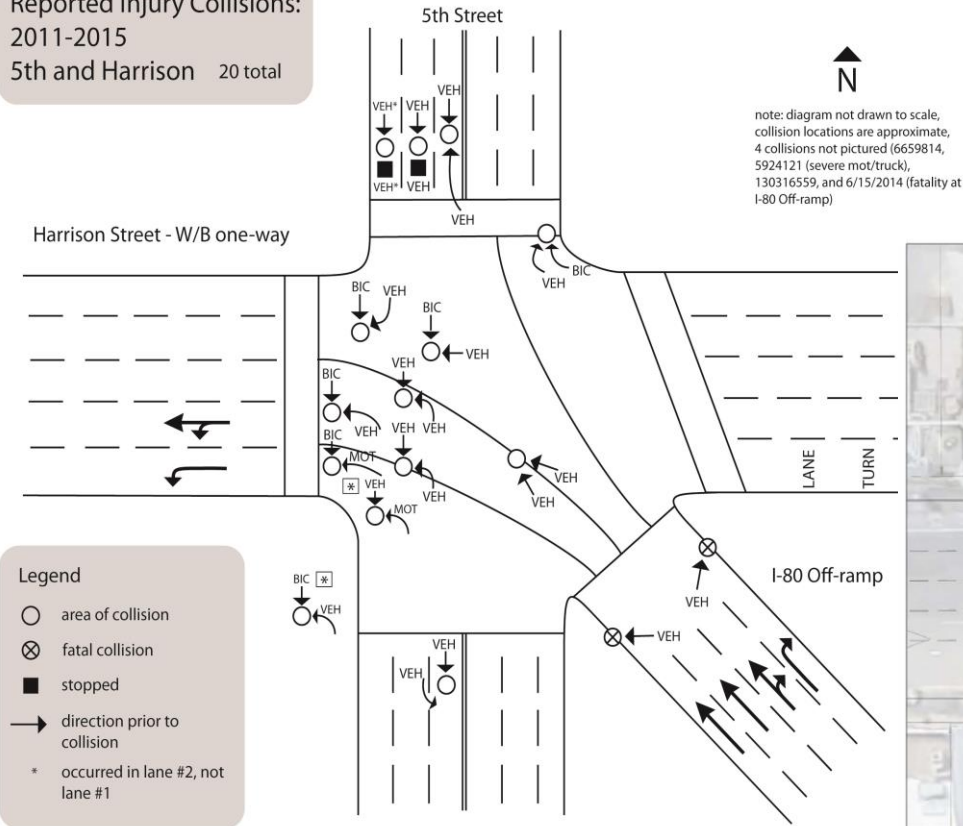
Proposed Improvement Plans



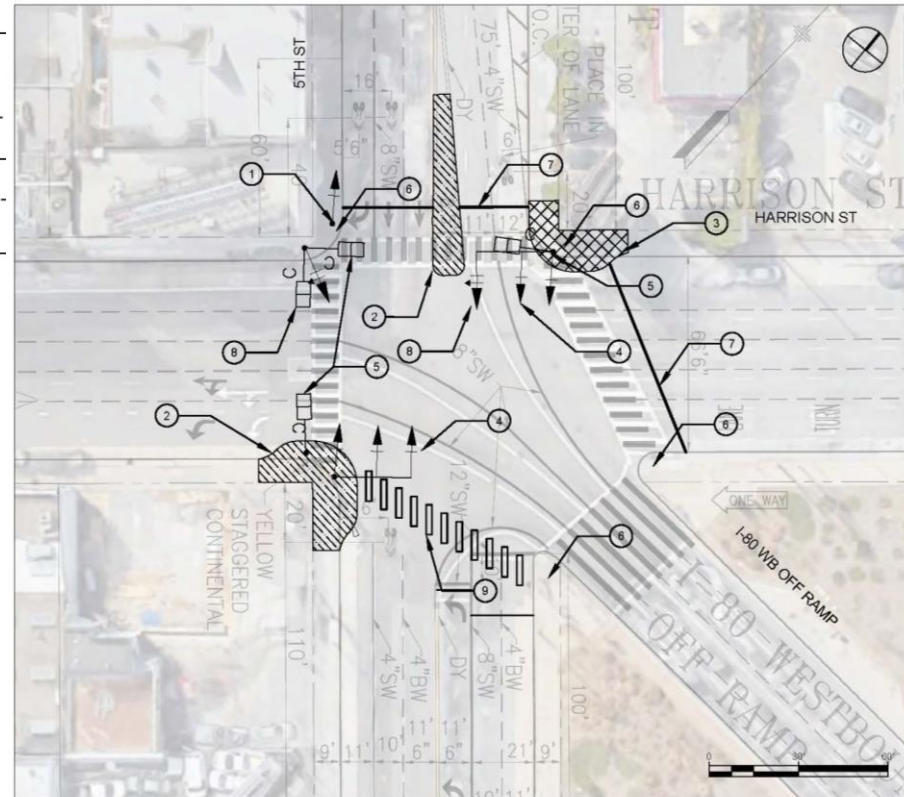
Example Concept Plan – 5th and Bryant Street

Collision Pattern

Reported Injury Collisions:
2011-2015
5th and Harrison 20 total



Proposed Improvement



Project Status

- ▶ **Conducting outreach to seek feedback on design concepts**
 - ▶ Walk SF
 - ▶ San Francisco Bicycle Coalition
 - ▶ Vision Zero Task Force
 - ▶ Vision Zero D6 Quarterly Meeting
 - ▶ Yerba Buena CBD
 - ▶ Senior and Disability Action
 - ▶ Pedestrian Safety Advisory Committee (PSAC)
 - ▶ Western SoMa Voice
 - ▶ Seeking meetings with others
- ▶ **Refining cost estimates, funding strategies and implementation plan with SFMTA**
- ▶ **Coordinating with Caltrans to identify any key issues and next steps for their review**



Next Steps and Phase 2

- ▶ **Refine proposed improvements based on community input**
- ▶ **Final report – Fall 2017**
- ▶ **Phase 2 - launching now**
 - ▶ **Analyze 10 ramp intersections in SoMa**
 - ▶ **Propose short-term and long-term safety improvements**
 - ▶ **Initial study outreach will begin later this year**



Questions?

Colin Dentel-Post
colin.dentel-post@sfcta.org



SAN FRANCISCO COUNTY TRANSPORTATION AUTHORITY