

San Francisco Congestion Management Program 2017 Update

Board of Supervisors
Agenda Item 10



SAN FRANCISCO COUNTY TRANSPORTATION AUTHORITY

December 5, 2017

CMP Purpose and Requirements

► Purpose

- Define and report performance measures for congestion management
- Describe congestion management strategies and efforts; 2017-19 work program

► Requirements

- Designated CMA updates every two years
- Auto Level-of-Service (LOS) and multimodal performance measures
- Travel Demand Management (TDM) and Land use impact analysis
- Capital Improvement Program (CIP)

Approval of CMP:

- Maintains city's eligibility for state gas tax and other revenues

CMP Monitoring Network 2017



Data Sources: Iteris, Inc. & 2015 SFCTA LOS Monitoring

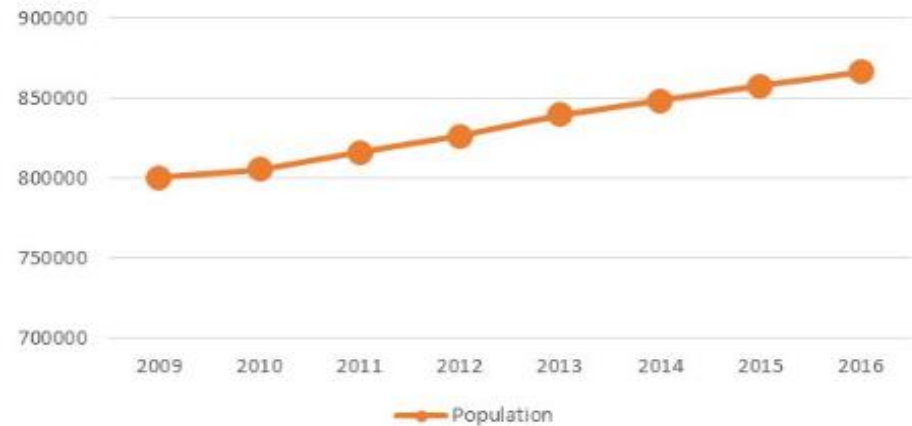
This map is for planning purposes only.



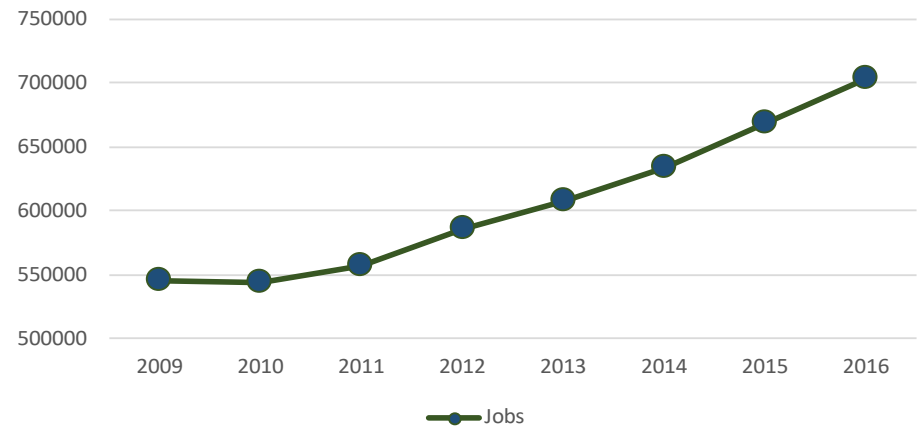
San Francisco's Rapid Growth

- ▶ Daytime population (includes non-resident workers) is over one million
- ▶ Over a 150,000 jobs added since 2010
- ▶ Jobs growth ~3 times population growth
- ▶ Significant commuting to San Francisco from other counties

SF Population



SF Jobs



Automobile LOS Monitoring - 2017

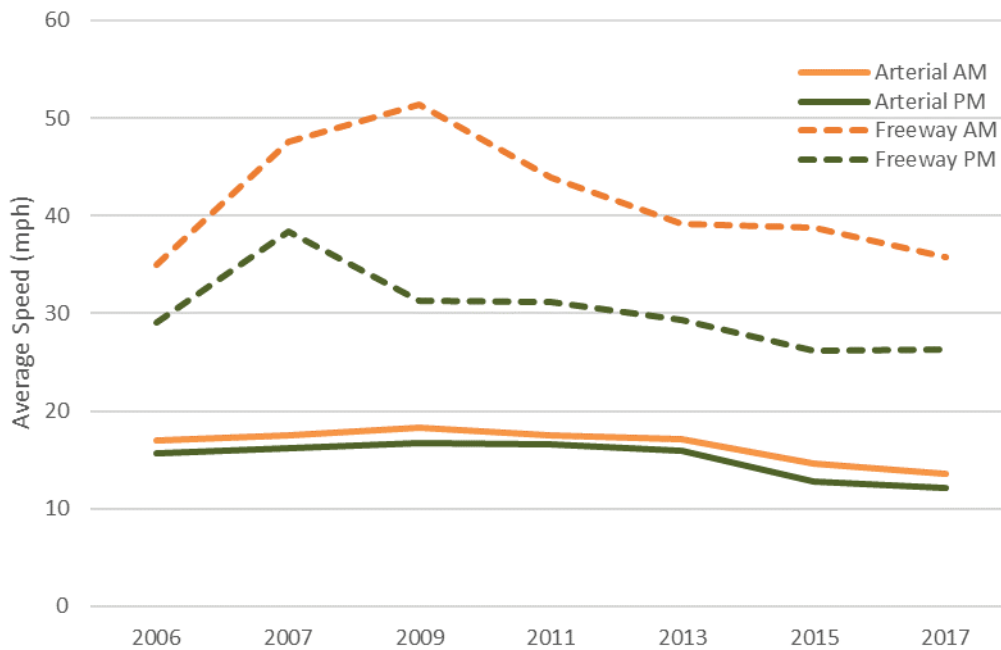
- ▶ Level of Service (LOS): Measure of auto congestion, required standard by law.
- ▶ Average Speed Decreases

Facility Type	Period	2015	2017	% Change
Arterials (198 miles)	AM Peak	14.6 mph	13.6 mph	-7%
	PM Peak	12.7 mph	12.2 mph	-4%
Freeways (35 miles)	AM Peak	38.8 mph	35.8 mph	-8%
	PM Peak	26.2 mph	26.4 mph	+1%



Automobile LOS Trends

Average Auto Speeds 2006-2017



2009 PM LOS



2017 PM LOS



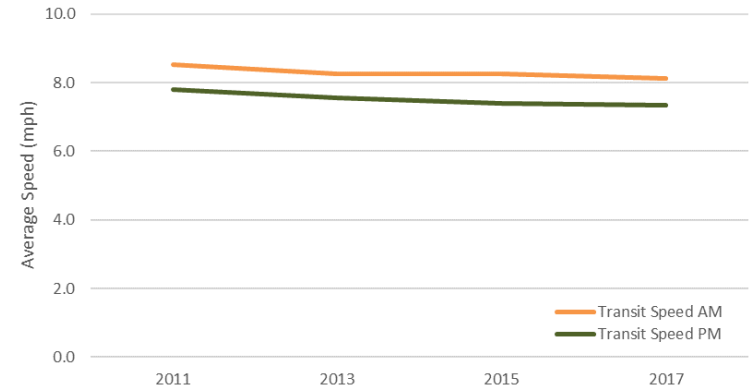
Transit Speed Monitoring- 2017

- ▶ Average Muni Bus Speeds
 - ▶ AM: 8.1 mph
 - ▶ PM: 7.3 mph
- ▶ Transit slightly more competitive with auto

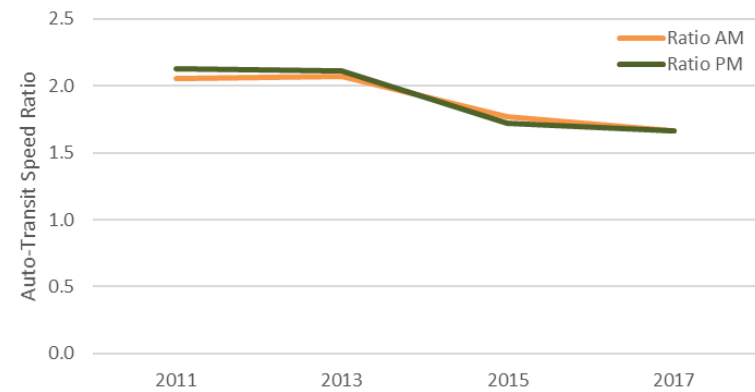
Average Bus Speeds PM 2017



Transit Speeds 2011-2017



Auto/Transit Speed Ratio 2011-2017



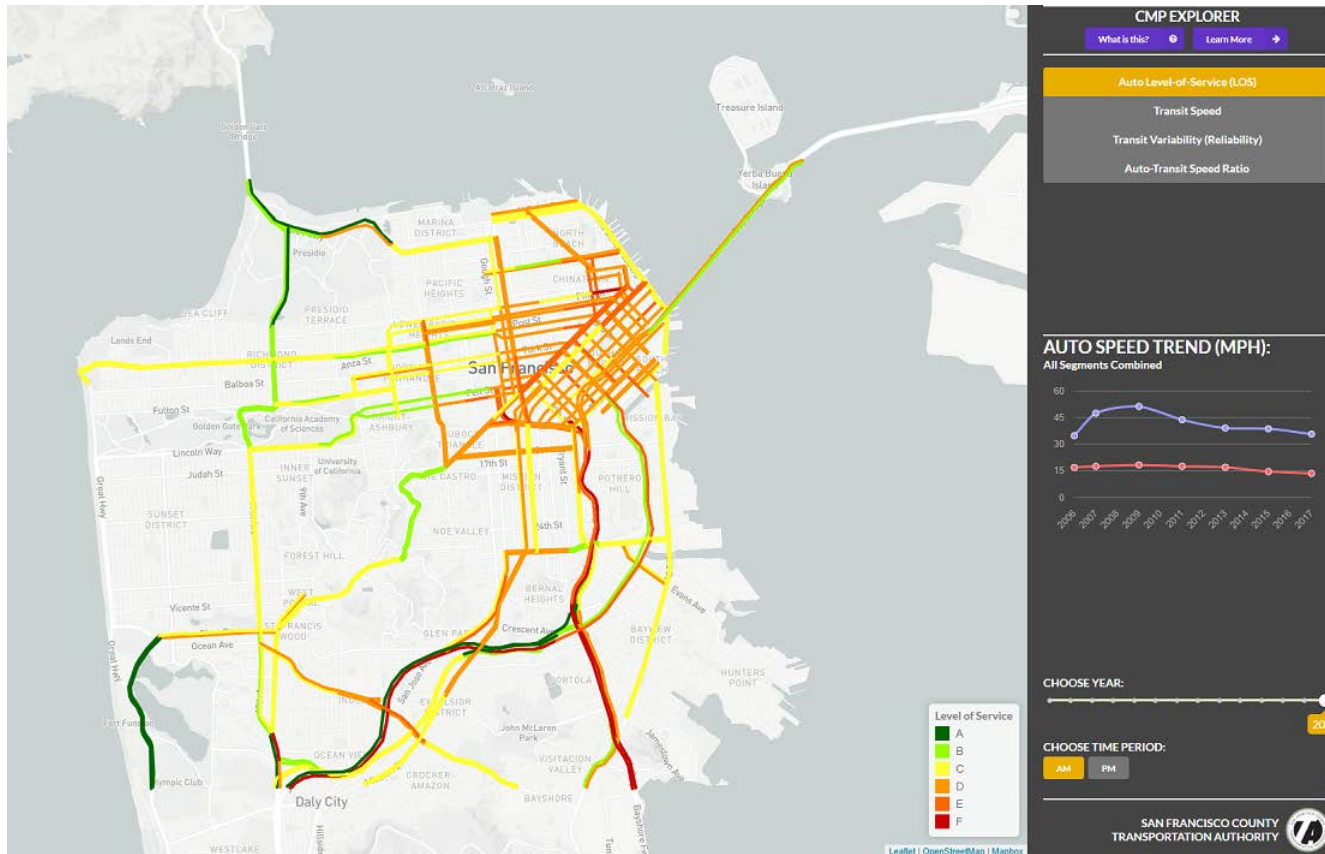
Key Updates in the 2017 CMP

- ▶ 2017 system performance monitoring
 - ▶ Automobile Level of Service (LOS or delay) monitoring
 - ▶ Surface transit speed analysis
- } Comparative travel time reporting
- ▶ Updates on travel demand management (TDM) studies and initiatives
 - ▶ Regional and state policy developments
 - ▶ Travel forecasting improvements
 - ▶ Capital Improvement Program (CIP): fund programming activities and project delivery progress
 - ▶ **Data warehouse created to store CMP monitoring data**
 - ▶ **Web-based CMP data explorer tool**



Congestion Data Visualization Website

<http://congestion.sfcta.org/>



Questions?



SAN FRANCISCO COUNTY TRANSPORTATION AUTHORITY