

Memorandum

Date: May 11, 2018
To: Transportation Authority Board
From: Cynthia Fong – Deputy Director for Finance and Administration
Subject: 5/22/2018 Board Meeting: Internal Accounting Report, Investment Report, and Debt Expenditure Report for the Nine Months Ending March 31, 2018

RECOMMENDATION <input checked="" type="checkbox"/> Information <input type="checkbox"/> Action	<input type="checkbox"/> Fund Allocation
None. This is an information item.	<input type="checkbox"/> Fund Programming
SUMMARY	<input type="checkbox"/> Policy/Legislation
The purpose of this memorandum is to provide the quarterly internal accounting report, investment report, and debt expenditure report for the Fiscal Year (FY) 2017/18 period ending March 31, 2018.	<input type="checkbox"/> Plan/Study
	<input type="checkbox"/> Capital Project Oversight/Delivery
	<input checked="" type="checkbox"/> Budget/Finance
	<input type="checkbox"/> Contract/Agreement
	<input type="checkbox"/> Other:

Background.

Our Fiscal Policy (Resolution 18-07) establishes an annual audit requirement and directs staff to report to the Board the agency’s actual expenditures in comparison to the approved budget, on at least a quarterly basis. The Investment Policy, Resolution 18-07, (Investment Policy) directs a review of portfolio compliance with the Investment Policy in conjunction with, and in the context of, the quarterly expenditure and budgetary report.

Internal Accounting Report.

Using the format of our annual financial statements for governmental funds, the Internal Accounting Report includes a “Balance Sheet” (Attachment 1) and a “Statement of Revenues, Expenditures, and Changes in Fund Balances, with Budget Comparison” (Attachment 2). In Attachment 2, the last two columns show, respectively, the budget values and the variance of revenues and expenditures, as compared to the approved budget. For the nine months ending March 31, 2018, the numbers in the approved budget column are three-fourths of the total amended annual budget for Fiscal Year (FY) 2017/18, including the Treasure Island Mobility Management Agency. Although the sales tax (Prop K), vehicle registration fees (Prop AA), accruals, revolving credit loan, and sales tax revenue bond are included for the nine-month totals, the Internal Accounting Report does not include: 1) the Governmental Accounting Standards Board Statement Number 34 adjustments or the other accruals that are done at the end of the FY, nor 2) investment income from the deposits and income with the city treasurer. The Balance Sheet values, as of March 31, 2018, are used as the basis for the Investment Policy compliance review.

Investment Report.

Our investment policies and practices are subject to, and limited by, applicable provisions of state law and prudent money management principles. All investable funds are invested in accordance with the Investment Policy and applicable provisions of California Government Code Section 53600 et seq. Any investment of bond proceeds will be further restricted by the provisions of relevant bond documents.

We observe the “Prudent Investor” standard, as stated in California Government Code Section 53600.3, applied in the context of managing an overall portfolio. Investments are to be made with care, skill, prudence, and diligence, taking into account the prevailing circumstances, including, but not limited to general economic conditions, our anticipated needs, and other relevant factors that a prudent person of a like character and purpose, acting in a fiduciary capacity and familiar with those matters, would use in the stewardship of funds.

The primary objectives for the investment activities, in order of priority, are:

- 1) **Safety.** Safety of the principal is the foremost objective of the investment program. Investments will be undertaken in a manner that seeks to ensure preservation of the principal of the funds under its control.
- 2) **Liquidity.** The investment portfolio will remain sufficiently liquid to enable us to meet its reasonably anticipated cash flow requirements.
- 3) **Return on Investment.** The investment portfolio will be managed with the objective of attaining a market rate of return throughout budgetary and economic cycles, commensurate with the investment risk parameters and the cash flow characteristics of the portfolio.

Permitted investment instruments are specifically listed in the Investment Policy and include the San Francisco City and County Treasury Pool (Treasury Pool), certificates of deposit, and money market funds.

Balance Sheet Analysis.

The Balance Sheet (Attachment 1) presents assets, liabilities, and fund balances as of March 31, 2018. Cash, deposits, investments, and restricted cash (Bonds Proceeds), total to \$235.4 million, as of March 31, 2018. Other assets total \$25.7 million and includes \$5.1 million of program receivable and \$15.2 million in sales tax receivable. Liabilities total \$331.5 million, as of March 31, 2018 and include \$7.9 million in accounts payable, an outstanding revolving credit loan of \$48.7 million, and sales tax revenue bond par and premium amount (Series 2017) of \$270.1 million.

There is a negative of \$71.2 million in total fund balances, which is largely the result of how multi-year programming commitments are accounted for. Future sales tax revenues and grant reimbursements collected will fully fund this difference. This amount is obtained as follows: \$12.6 million is restricted for capital projects and \$83.9 million is an unassigned negative fund balance. The unassigned negative fund balance reflects grant-funded capital projects that are scheduled to be implemented over the course of several fiscal years. The commitments are multi-year commitments and funded with non-current (i.e., future) revenues. Commitments of future revenues are tracked through the grant administration process, and there is no issue with the availability of future revenues to honor them. A negative fund balance is a result of how these commitments are accounted for and it does not affect the viability of the projects or grants. In addition, we do not hold nor retain title for the projects constructed or for the vehicles and system improvements purchased with sales tax funds,

which can result in a negative position. This reporting of all legal funding commitments without the corresponding revenue or assets creates or largely contributes to the \$83.9 million unassigned negative fund balance.

Statement of Revenues, Expenditures, and Changes in Fund Balances Analysis.

The Statement of Revenues, Expenditures, and Changes in Fund Balances with Budget Comparison (Attachment 2) compares budgeted to actual levels for revenues and expenditures for the first nine months (three quarters) of the fiscal year. We earned \$94.7 million in revenues, including \$77.2 million in sales tax revenues, and \$13.1 million in total program revenues, for the nine months, ending March 31, 2018.

As of March 31, 2018, we incurred \$145.8 million of expenditures, including \$43.5 million in capital projects costs, \$96.2 million in debt service cost to refinance and repay a portion of the revolving credit loan, and \$6.1 million for personnel and non-personnel expenditures.

For the nine months, ending March 31, 2018, revenues were lower than budgetary estimates by \$850,131 for all of the programs due to lower sales tax revenue collections. Total expenditures were lower than the budgetary estimates by \$153.5 million. This amount includes a favorable variance of \$2.3 million for personnel and non-personnel expenditures, a favorable variance of \$157.0 million in capital project costs, and unfavorable variance of \$5.8 million of debt service cost. The variance in debt service cost is due to timing of the increased repayments for the revolving credit loan to minimize interest costs. The variance in capital project costs is due to costs from project sponsors that have not yet been received for the third quarter. We anticipate a higher level of Prop K reimbursement requests and personnel and non-personnel costs during the next quarter.

Investment Compliance.

As of March 31, 2018, approximately 62.9 percent of our investable assets, excluding the bond proceeds held by US Bank, per the terms of the debt indenture, were invest in the Treasury Pool. These investments are in compliance with both the California Government Code and the adopted Investment Policy and provide sufficient liquidity to meet expenditures requirements for the next six months. Attachment 3 is the most recent investment report furnished by the Office of the Treasurer.

Debt Expenditure Compliance.

As of March 31, 2018, we paid \$99,135,215 of Prop K capital expenditures with bond proceeds and \$150,869,024 of bond proceeds remains to be spent. See Attachment 4 for a list of capital projects expenditures paid.

FINANCIAL IMPACT

None. This is an information item.

CAC POSITION

None. This is an information item.

SUPPLEMENTAL MATERIALS

Attachment 1 – Balance Sheet (unaudited)

Attachment 2 – Statement of Revenue, Expenditures, and Changes in Fund Balance with Budget
Comparison (unaudited)

Attachment 3 – Investment Report for March 31, 2018

Attachment 4 – Debt Expenditure Report for March 31, 2018

SAN FRANCISCO COUNTY TRANSPORTATION AUTHORITY
ATTACHMENT 1
Balance Sheet (unaudited)
Governmental Funds
March 31, 2018

	Sales Tax Program	Congestion Management Agency Programs	Transportation Fund for Clean Air Program	Vehicle Registration Fee for Transportation Improvements Program	Treasure Island Mobility Management Agency Program	Total
Assets:						
Cash In Bank	\$ 4,738,703	\$ -	\$ 1,101,132	\$ 11,523,317	\$ -	\$ 17,363,152
Deposits and Investments with City Treasurer	29,459,882	-	-	-	-	29,459,882
Restricted Cash (Bond Proceeds)	188,610,016	-	-	-	-	188,610,016
Sales Tax Receivable	15,168,700	-	-	-	-	15,168,700
Vehicle Registration Fees Receivable	-	-	-	814,852	-	814,852
Interest Receivable from the City and County of San Francisco *	33,698	-	-	-	-	33,698
Program Receivable	-	4,385,774	-	-	761,980	5,147,754
Due From Other Funds	4,456,604	-	-	-	-	4,456,604
Prepaid Costs and Deposits	81,580	-	-	-	-	81,580
Total Assets	\$ 242,549,183	\$ 4,385,774	\$ 1,101,132	\$ 12,338,169	\$ 761,980	\$ 261,136,238
Liabilities:						
Accounts Payable	\$ 7,239,867	\$ 388,779	\$ 44,532	\$ 197,480	\$ 39,212	\$ 7,909,870
Accrued Salaries and Taxes	376,818	-	-	-	-	376,818
Due to Other Funds	-	3,263,267	441,004	134,424	617,909	4,456,604
Revolver Credit Loan	48,664,165	-	-	-	-	48,664,165
Sales Tax Revenue Bond (Series 2017)	270,133,005	-	-	-	-	270,133,005
Total Liabilities	\$ 326,413,855	\$ 3,652,046	\$ 485,536	\$ 331,904	\$ 657,121	\$ 331,540,462
Deferred Inflows of Resources:						
Unavailable Program Revenues	\$ -	\$ 733,728	\$ -	\$ -	\$ 104,859	\$ 838,587
Fund Balances (Deficit):						
Nonspendable	81,580	-	-	-	-	81,580
Restricted for Capital Projects	-	-	615,596	12,006,265	-	12,621,861
Unassigned	(83,946,252)	-	-	-	-	(83,946,252)
Total Fund Balances (Deficit)	\$ (83,864,672)	\$ -	\$ 615,596	\$ 12,006,265	\$ -	\$ (71,242,811)
Total Liabilities, Deferred Inflows of Resources, and Fund Balances	\$ 242,549,183	\$ 4,385,774	\$ 1,101,132	\$ 12,338,169	\$ 761,980	\$ 261,136,238

* - Amount has not been update since 6/30/2017 due to information not available.

SAN FRANCISCO COUNTY TRANSPORTATION AUTHORITY

ATTACHMENT 2

Statement of Revenue, Expenditures, and Changes in Fund Balances with Budget Comparison (unaudited)

Governmental Funds

For the Nine Months Ending March 31, 2018

	Sales Tax Program	Congestion Management Agency Programs	Transportation Fund for Clean Air Program	Vehicle Registration Fee for Transportation Improvements Program	Treasure Island Mobility Management Agency Program	Total	Amended Budget Fiscal Year 2017/18	Variance with Proposed Budget Positive (Negative)
Revenues:								
Sales Tax	\$ 77,210,792	\$ -	\$ -	\$ -	\$ -	\$ 77,210,792	\$ 78,203,945	\$ (993,153)
Vehicle Registration Fee	-	-	-	3,666,834	-	3,666,834	3,625,537	41,297
Investment Income	614,881	-	1,283	2,888	-	619,052	474,716	144,336
Program Revenue	1,346,309	10,685,340	380,605	-	720,738	13,132,992	13,174,175	(41,183)
Other Revenue	31,167	-	-	-	-	31,167	32,595	(1,428)
Total Revenues	\$ 79,203,149	\$ 10,685,340	\$ 381,888	\$ 3,669,722	\$ 720,738	\$ 94,660,837	\$ 95,510,968	\$ (850,131)
Expenditures:								
Personnel Expenditures	\$ 2,573,456	\$ 1,405,792	\$ 25,228	\$ 51,657	\$ 314,810	\$ 4,370,943	\$ 5,735,963	\$ 1,365,020
Non-personnel Expenditures	1,655,394	71,399	-	50	16,624	1,743,467	2,635,037	891,570
Capital Project Costs	37,768,460	4,489,554	171,734	707,091	362,447	43,499,286	200,462,711	156,963,425
Debt Service								
Principal	91,000,981	-	-	-	-	91,000,981	86,250,000	(4,750,981)
Interest and fiscal charges	5,155,806	-	-	-	-	5,155,806	4,148,456	(1,007,350)
Total Expenditures	\$ 138,154,097	\$ 5,966,745	\$ 196,962	\$ 758,798	\$ 693,881	\$ 145,770,483	\$ 299,232,167	\$ 153,461,684
Excess of Revenues over Expenditures	\$ (58,950,948)	\$ 4,718,595	\$ 184,926	\$ 2,910,924	\$ 26,857	\$ (51,109,646)	\$ (203,721,199)	\$ 152,611,553
Other financing sources (uses):								
Transfers In and out	\$ 4,745,452	\$ (4,718,595)	\$ -	\$ -	\$ (26,857)	\$ -	\$ -	\$ -
Sales Tax Revenue Bond (Series 2017) and Premium	270,133,005	-	-	-	-	270,133,005	202,599,754	67,533,251
Net Change in Fund Balances	\$ 215,927,509	\$ -	\$ 184,926	\$ 2,910,924	\$ -	\$ 219,023,359	\$ (1,121,445)	\$ 220,144,804
Fund Balances (Deficit), Beginning of the Period	19,004,989	-	430,670	9,095,341	-	28,531,000		
Revolver Credit Loan	(48,664,165)	-	-	-	-	(48,664,165)		
Sales Tax Revenue Bond (Series 2017)	(270,133,005)	-	-	-	-	(270,133,005)		
Fund Balances (Deficit), End of the Period	<u>\$ (83,864,672)</u>	<u>\$ -</u>	<u>\$ 615,596</u>	<u>\$ 12,006,265</u>	<u>\$ -</u>	<u>\$ (71,242,811)</u>		

Office of the Treasurer & Tax Collector
City and County of San Francisco



José Cisneros, Treasurer

Tajel Shah, Chief Assistant Treasurer
Robert L. Shaw, CFA, Chief Investment Officer

Investment Report for the month of March 2018

April 15, 2018

The Honorable Mark Farrell
Mayor of San Francisco
City Hall, Room 200
1 Dr. Carlton B. Goodlett Place
San Francisco, CA 94102-4638

The Honorable Board of Supervisors
City and County of San Francisco
City Hall, Room 244
1 Dr. Carlton B. Goodlett Place
San Francisco, CA 94102-4638

Ladies and Gentlemen,

In accordance with the provisions of California State Government Code, Section 53646, we forward this report detailing the City's pooled fund portfolio as of March 31, 2018. These investments provide sufficient liquidity to meet expenditure requirements for the next six months and are in compliance with our statement of investment policy and California Code.

This correspondence and its attachments show the investment activity for the month of March 2018 for the portfolios under the Treasurer's management. All pricing and valuation data is obtained from Interactive Data Corporation.

CCSF Pooled Fund Investment Earnings Statistics *

<i>(in \$ million)</i>	Current Month		Prior Month	
	Fiscal YTD	March 2018	Fiscal YTD	February 2018
Average Daily Balance	\$ 8,761	\$ 9,491	\$ 8,668	\$ 9,434
Net Earnings	99.45	13.78	85.67	12.45
Earned Income Yield	1.51%	1.71%	1.48%	1.72%

CCSF Pooled Fund Statistics *

<i>(in \$ million)</i>	% of Portfolio	Book Value	Market Value	Wtd. Avg. Coupon	Wtd. Avg. YTM	WAM
Investment Type						
U.S. Treasuries	11.48%	\$ 1,118.3	\$ 1,112.9	0.74%	1.67%	411
Federal Agencies	46.95%	4,595.7	4,551.9	1.70%	1.73%	718
State & Local Government						
Agency Obligations	1.70%	167.7	164.4	1.86%	1.41%	511
Public Time Deposits	0.26%	25.0	25.0	1.70%	1.70%	93
Negotiable CDs	22.23%	2,157.8	2,155.1	1.89%	1.89%	171
Commercial Paper	7.26%	701.9	704.2	0.00%	1.90%	87
Medium Term Notes	0.72%	70.0	69.9	2.03%	2.04%	388
Money Market Funds	4.09%	396.5	396.5	1.48%	1.48%	1
Supranationals	5.31%	518.9	514.6	1.97%	1.80%	635
Totals	100.0%	\$ 9,752.0	\$ 9,694.5	1.50%	1.76%	474

In the remainder of this report, we provide additional information and analytics at the security-level and portfolio-level, as recommended by the California Debt and Investment Advisory Commission.

Very truly yours,

José Cisneros
Treasurer

cc: Treasury Oversight Committee: Aimee Brown, Ron Gerhard, Reeta Madhavan, Charles Perl
Ben Rosenfield, Controller, Office of the Controller
Tonia Lediju, Internal Audit, Office of the Controller
Mayor's Office of Public Policy and Finance
San Francisco County Transportation Authority
San Francisco Public Library
San Francisco Health Service System

Portfolio Summary

Pooled Fund

As of March 31, 2018

<i>(in \$ million)</i>							
Security Type	Par Value	Book Value	Market Value	Market/Book Price	Current % Allocation	Max. Policy Allocation	Compliant?
U.S. Treasuries	\$ 1,125.0	\$ 1,118.3	\$ 1,112.9	99.51	11.48%	100%	Yes
Federal Agencies	4,596.8	4,595.7	4,551.9	99.05	46.95%	100%	Yes
State & Local Government							
Agency Obligations	165.6	167.7	164.4	98.01	1.70%	20%	Yes
Public Time Deposits	25.0	25.0	25.0	100.00	0.26%	100%	Yes
Negotiable CDs	2,157.8	2,157.8	2,155.1	99.87	22.23%	30%	Yes
Bankers Acceptances	-	-	-	-	0.00%	40%	Yes
Commercial Paper	708.0	701.9	704.2	100.33	7.26%	25%	Yes
Medium Term Notes	70.0	70.0	69.9	99.85	0.72%	25%	Yes
Repurchase Agreements	-	-	-	-	0.00%	10%	Yes
Reverse Repurchase/ Securities Lending Agreements	-	-	-	-	0.00%	\$75mm	Yes
Money Market Funds - Government	396.5	396.5	396.5	100.00	4.09%	20%	Yes
LAIF	-	-	-	-	0.00%	\$50mm	Yes
Supranationals	520.3	518.9	514.6	99.18	5.31%	30%	Yes
TOTAL	\$ 9,765.0	\$ 9,752.0	\$ 9,694.5	99.41	100.00%	-	Yes

The City and County of San Francisco uses the following methodology to determine compliance: Compliance is pre-trade and calculated on both a par and market value basis, using the result with the lowest percentage of the overall portfolio value. Cash balances are included in the City's compliance calculations.

Please note the information in this report does not include cash balances. Due to fluctuations in the market value of the securities held in the Pooled Fund and changes in the City's cash position, the allocation limits may be exceeded on a post-trade compliance basis. In these instances, no compliance violation has occurred, as the policy limits were not exceeded prior to trade execution.

The full Investment Policy can be found at <http://www.sftreasurer.org/>, in the Reports & Plans section of the About menu.

Totals may not add due to rounding.

SAN FRANCISCO COUNTY TRANSPORTATION AUTHORITY

Sales Tax Revenue Bond

Attachment 4

Debt Expenditure Report

As of March 31, 2018

Bond Proceed Uses	Bond Proceeds	Spent Bond Proceeds	Remaining Balance
Capital Project Fund	\$ 204,003,258	\$ 53,134,234	\$150,869,024
Revolving Refinancing	\$ 46,000,981	\$ 46,000,981	\$0
Total	\$250,004,239	\$ 99,135,215	\$150,869,024
Interest Earned			\$587,170

Sponsor	Bond-Eligible Reimbursement Requests Spent	Previous	Current	Cumulative Total
SFMTA	Radio Communications System & CAD Replacement ¹	\$ 10,776,022	\$ 7,840,642	\$ 18,616,664
SFMTA	Motor Coach Procurement ¹	\$ 11,665,744	\$ 52,146	\$ 11,717,890
TJPA	Transbay Transit Center	\$ 1,185,436	\$ 5,011,997	\$ 6,197,433
SFMTA	Signals - New and Upgraded	\$ 1,841,079	\$ 1,061,894	\$ 2,902,974
PCJPB	Caltrain Early Investment Program - Electrification	\$ 677,150	\$ 1,798,022	\$ 2,475,172
SFMTA	Trolley Coach Procurement ¹	\$ 145,229	\$ 2,091,900	\$ 2,237,129
PCJPB	Caltrain Early Investment Program - CBOSS	\$ 1,393,683	\$ -	\$ 1,393,683
SFMTA	Guideway Improvements (e.g. MME, Green Light Rail Facility, OCS)	\$ 715,210	\$ 650,508	\$ 1,365,718
SFMTA	Light Rail Vehicle Procurement ¹	\$ 1,329,105	\$ -	\$ 1,329,105
SFMTA	1570 Burke Avenue Maintenance Facility	\$ 541,589	\$ 567,747	\$ 1,109,337
SFMTA	Escalators	\$ 234,844	\$ 749,787	\$ 984,631
SFMTA	Muni Forward	\$ 276,363	\$ 640,802	\$ 917,165
SFMTA	Central Control and Communications (C3) Program ¹	\$ 665,807	\$ 200,998	\$ 866,805
SFMTA	Geary Bus Rapid Transit	\$ 383,683	\$ 299,084	\$ 682,767
SFMTA	Balboa Park Station Area and Plaza Improvements	\$ 135,813	\$ 70,156	\$ 205,968
SFMTA	Traffic Calming Implementation (Prior Areawide Plans)	\$ 77,472	\$ 54,323	\$ 131,795
	Total	\$ 32,044,228	\$ 21,090,006	\$ 53,134,234
1 Major Cash Flow Drivers				
	Percentage of Capital Project Fund Spent	15.71%	10.34%	26.05%

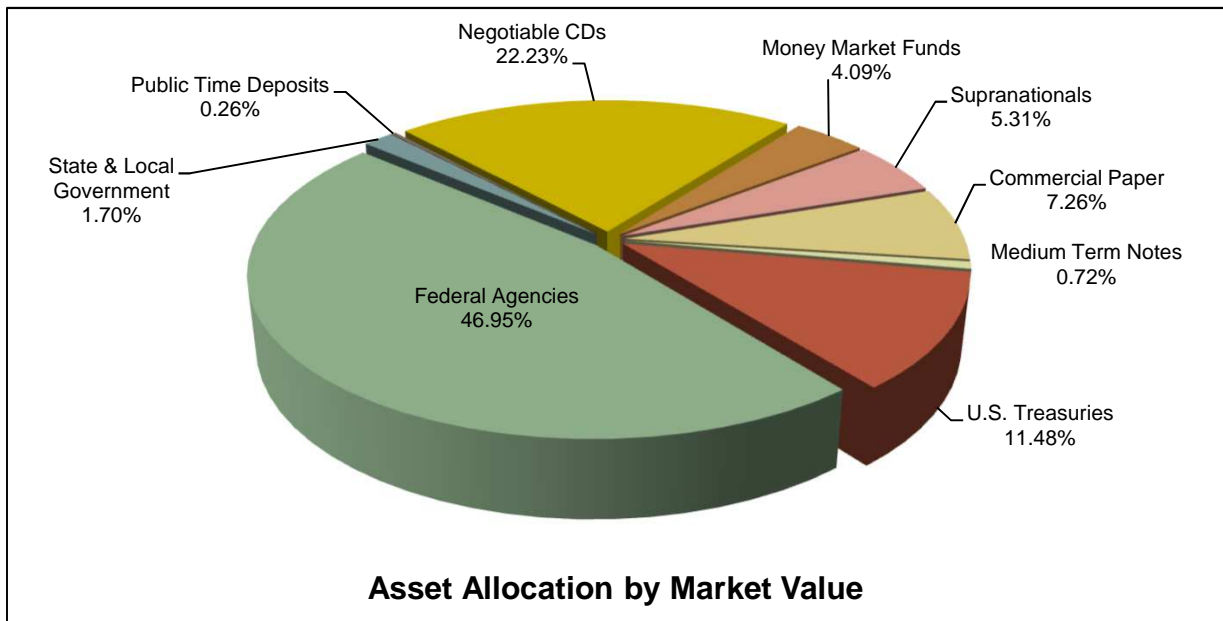
City and County of San Francisco

Pooled Fund Portfolio Statistics

For the month ended March 31, 2018

Average Daily Balance	\$9,490,883,037
Net Earnings	\$13,782,952
Earned Income Yield	1.71%
Weighted Average Maturity	474 days

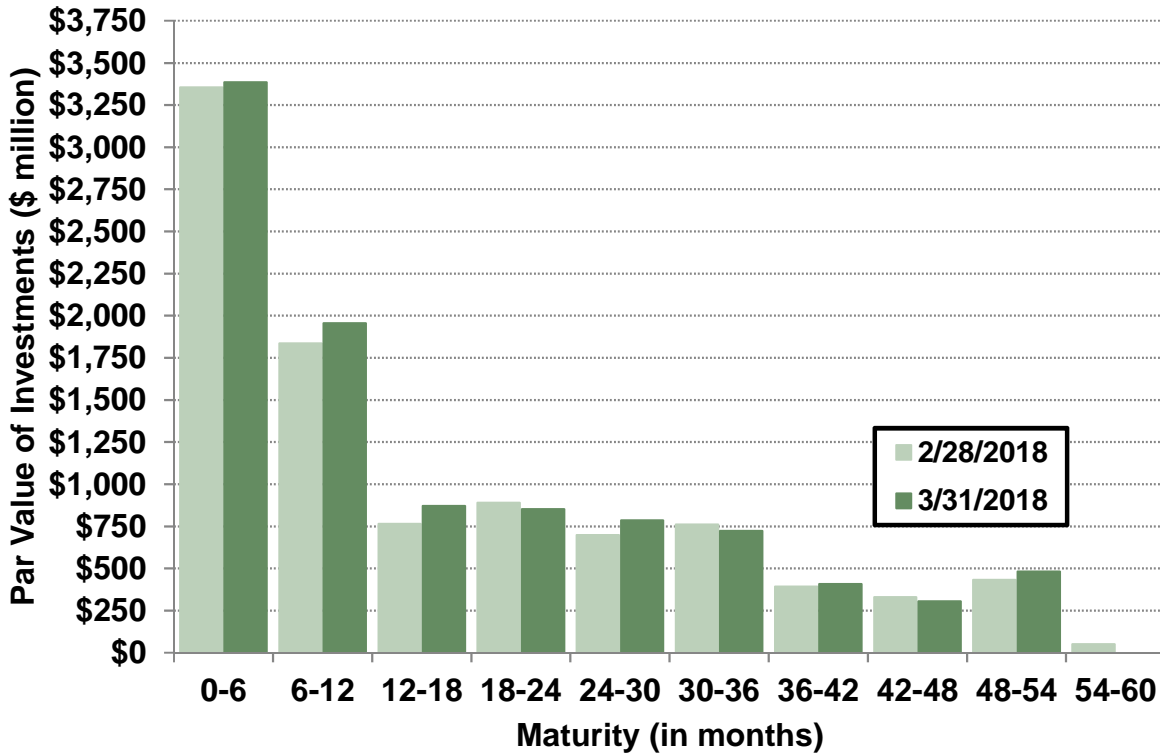
Investment Type	(\$ million)	Par Value	Book Value	Market Value
U.S. Treasuries	\$ 1,125.0	\$ 1,118.3	\$ 1,112.9	\$ 1,112.9
Federal Agencies	4,596.8	4,595.7	4,551.9	4,551.9
State & Local Government				
Agency Obligations	165.6	167.7	164.4	164.4
Public Time Deposits	25.0	25.0	25.0	25.0
Negotiable CDs	2,157.8	2,157.8	2,155.1	2,155.1
Commercial Paper	708.0	701.9	704.2	704.2
Medium Term Notes	70.0	70.0	69.9	69.9
Money Market Funds	396.5	396.5	396.5	396.5
Supranationals	520.3	518.9	514.6	514.6
Total	\$ 9,765.0	\$ 9,752.0	\$ 9,694.5	\$ 9,694.5



Portfolio Analysis

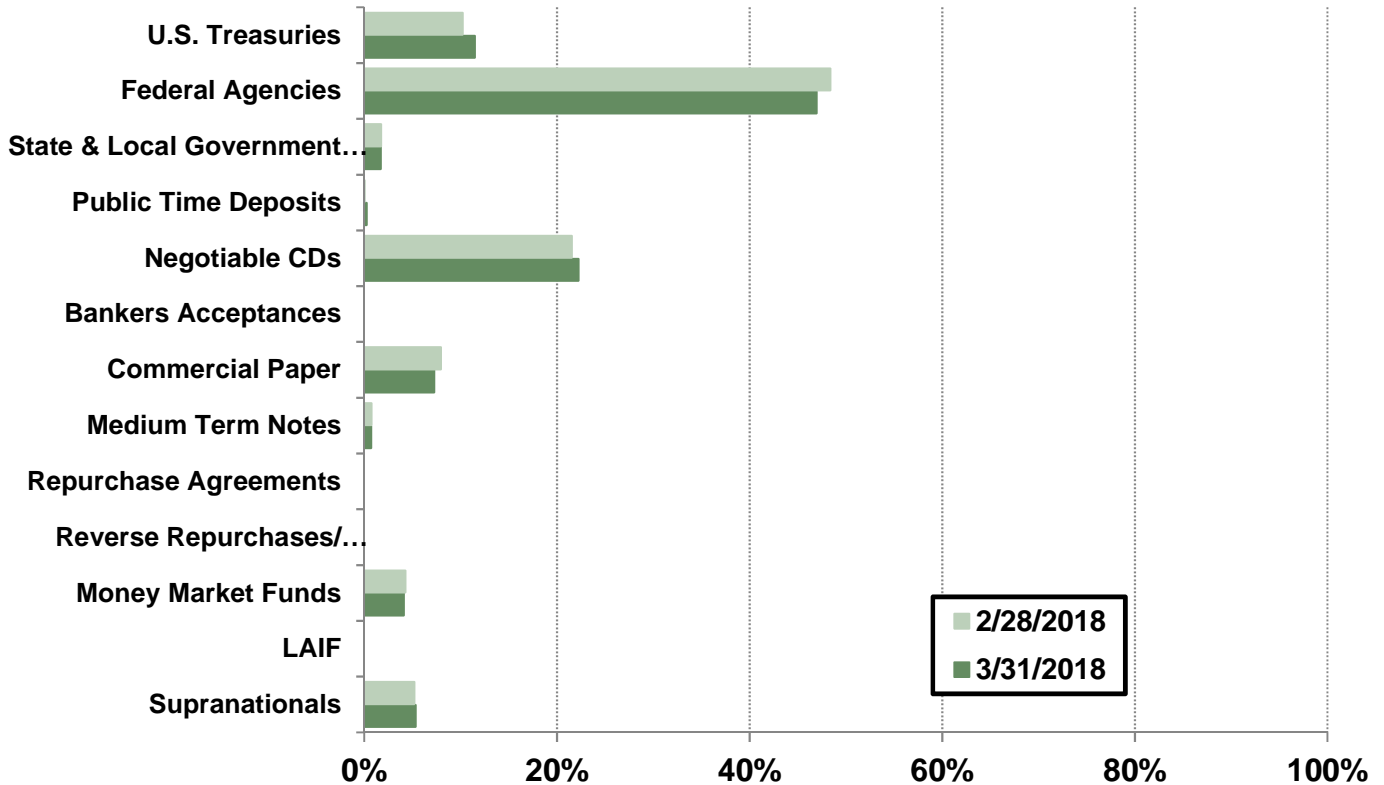
Pooled Fund

Par Value of Investments by Maturity

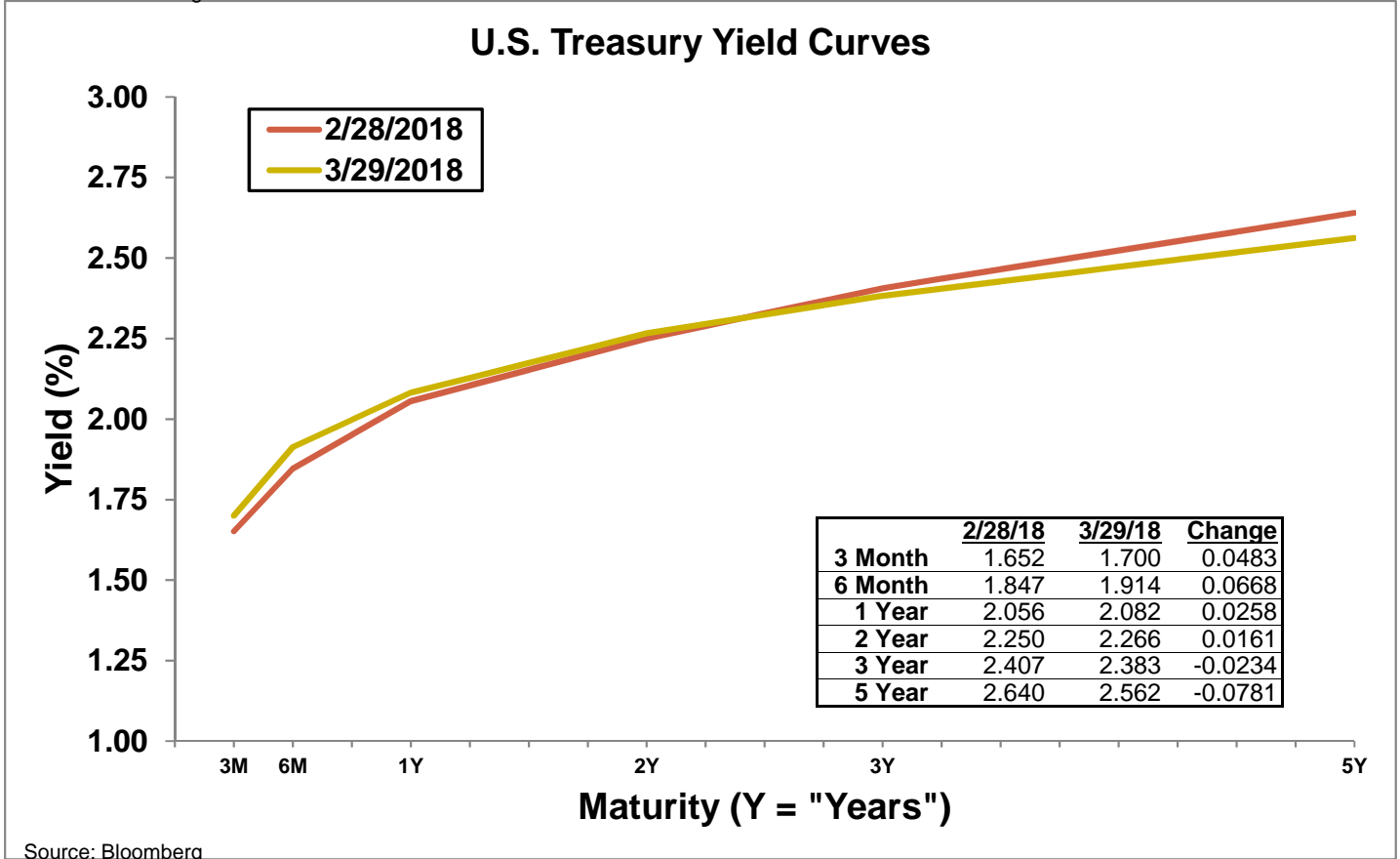
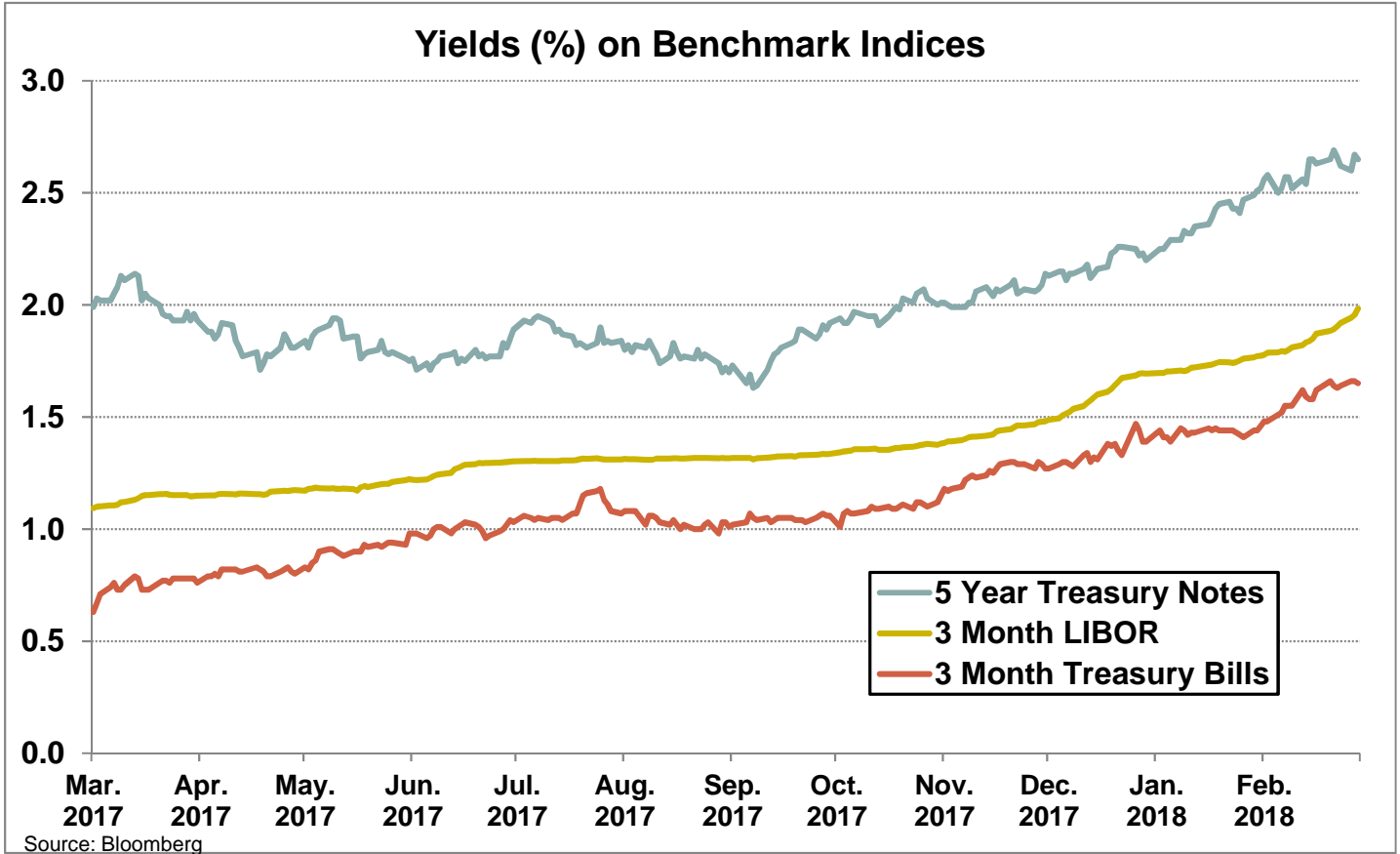


Callable bonds shown at maturity date.

Asset Allocation by Market Value



Yield Curves



Investment Inventory

Pooled Fund

As of March 31, 2018

Type of Investment	CUSIP	Issuer Name	Maturity		Coupon	Par Value	Book Value	Amortized	
			Settle Date	Date				Book Value	Market Value
U.S. Treasuries	912796NY1	TREASURY BILL	3/8/18	4/5/18	0.00	\$ 50,000,000	\$ 49,939,722	\$ 49,991,389	\$ 49,995,667
U.S. Treasuries	912796PB9	TREASURY BILL	1/18/18	4/19/18	0.00	100,000,000	99,641,056	99,929,000	99,930,700
U.S. Treasuries	912796LX5	TREASURY BILL	4/27/17	4/26/18	0.00	25,000,000	24,732,056	24,732,056	24,975,463
U.S. Treasuries	912796PC7	TREASURY BILL	2/1/18	5/3/18	0.00	100,000,000	99,639,792	99,873,333	99,868,235
U.S. Treasuries	912828XF2	US TREASURY	6/14/17	6/15/18	1.13	50,000,000	49,931,641	49,985,992	49,934,000
U.S. Treasuries	912796NQ8	TREASURY BILL	2/13/18	8/16/18	0.00	50,000,000	49,552,778	49,667,014	49,657,007
U.S. Treasuries	9128282C3	US TREASURY	2/14/18	8/31/18	0.75	25,000,000	24,857,422	24,890,546	24,882,750
U.S. Treasuries	912796QA0	TREASURY BILL	3/29/18	9/27/18	0.00	50,000,000	49,520,354	49,528,260	49,541,127
U.S. Treasuries	912796QA0	TREASURY BILL	3/29/18	9/27/18	0.00	50,000,000	49,523,261	49,531,119	49,541,127
U.S. Treasuries	912828L81	US TREASURY	12/13/17	10/15/18	0.88	50,000,000	49,736,929	49,784,984	49,705,000
U.S. Treasuries	912828L81	US TREASURY	1/10/18	10/15/18	0.88	50,000,000	49,776,442	49,767,480	49,705,000
U.S. Treasuries	912828T83	US TREASURY	2/15/18	10/31/18	0.75	25,000,000	24,851,320	24,831,498	24,824,250
U.S. Treasuries	912828WD8	US TREASURY	12/19/17	10/31/18	1.25	50,000,000	49,889,287	49,868,349	49,787,000
U.S. Treasuries	912828V56	US TREASURY	2/15/18	1/31/19	1.13	50,000,000	49,597,527	49,628,962	49,601,500
U.S. Treasuries	912796PT0	TREASURY BILL	3/1/18	2/28/19	0.00	50,000,000	48,978,778	49,065,750	49,091,457
U.S. Treasuries	912828XS4	US TREASURY	6/20/17	5/31/19	1.25	50,000,000	49,896,484	49,938,036	49,470,500
U.S. Treasuries	9128283N8	US TREASURY	1/16/18	12/31/19	1.88	50,000,000	49,912,530	49,884,634	49,666,000
U.S. Treasuries	912828XU9	US TREASURY	6/20/17	6/15/20	1.50	50,000,000	49,982,422	49,987,014	49,119,000
U.S. Treasuries	912828S27	US TREASURY	8/15/17	6/30/21	1.13	25,000,000	24,519,531	24,597,289	23,982,500
U.S. Treasuries	912828T67	US TSY NT	11/10/16	10/31/21	1.25	50,000,000	49,574,219	49,693,091	47,920,000
U.S. Treasuries	912828U65	US TSY NT	12/13/16	11/30/21	1.75	100,000,000	99,312,500	99,492,244	97,453,000
U.S. Treasuries	912828XW5	US TREASURY	8/15/17	6/30/22	1.75	25,000,000	24,977,539	24,980,429	24,229,500
Subtotals					0.74	\$ 1,125,000,000	\$ 1,118,343,589	\$ 1,119,648,469	\$ 1,112,880,783
Federal Agencies	3137EAEA3	FREDDIE MAC	2/8/17	4/9/18	0.75	\$ 25,000,000	\$ 24,944,750	\$ 24,998,960	\$ 24,995,250
Federal Agencies	313385VM5	FED HOME LN DISCOUNT NT	1/23/18	4/13/18	0.00	25,000,000	24,921,111	24,988,167	24,987,250
Federal Agencies	3133EEZC7	FEDERAL FARM CREDIT BANK	4/16/15	4/16/18	1.84	50,000,000	49,992,422	49,999,896	50,002,000
Federal Agencies	3132X0SB8	FARMER MAC	8/10/17	4/19/18	1.25	10,000,000	9,998,000	9,999,857	9,998,400
Federal Agencies	3132X0SB8	FARMER MAC	4/19/17	4/19/18	1.25	50,000,000	50,000,000	50,000,000	49,992,000
Federal Agencies	31331KJB7	FEDERAL FARM CREDIT BANK	2/2/16	4/25/18	3.00	14,230,000	14,876,184	14,249,076	14,246,649
Federal Agencies	3135G0WJ8	FANNIE MAE	5/23/13	5/21/18	0.88	25,000,000	24,786,500	24,994,147	24,971,000
Federal Agencies	3130A8VL4	FEDERAL HOME LOAN BANK	8/24/16	5/24/18	1.00	10,000,000	10,000,000	10,000,000	9,988,500
Federal Agencies	3130A8VL4	FEDERAL HOME LOAN BANK	8/24/16	5/24/18	1.00	25,000,000	25,000,000	25,000,000	24,971,250
Federal Agencies	3134G9HC4	FREDDIE MAC	5/25/16	5/25/18	1.00	10,000,000	9,995,000	9,999,630	9,987,900
Federal Agencies	313385XL5	FED HOME LN DISCOUNT NT	5/30/17	5/30/18	0.00	50,000,000	49,376,458	49,376,458	49,863,000
Federal Agencies	3133EFCT2	FEDERAL FARM CREDIT BANK	9/8/15	6/8/18	1.77	25,000,000	25,000,000	25,000,000	25,008,750
Federal Agencies	3133EFCT2	FEDERAL FARM CREDIT BANK	9/8/15	6/8/18	1.77	50,000,000	50,000,000	50,000,000	50,017,500
Federal Agencies	3133EEW48	FEDERAL FARM CREDIT BANK	6/11/15	6/11/18	1.78	50,000,000	49,996,000	49,999,741	50,017,500
Federal Agencies	3133EFSH1	FEDERAL FARM CREDIT BANK	12/18/15	6/14/18	1.17	25,000,000	24,952,250	24,996,113	24,977,500
Federal Agencies	3133EGGC3	FEDERAL FARM CREDIT BANK	6/20/16	6/20/18	1.94	25,000,000	25,000,000	25,000,000	25,012,500
Federal Agencies	3134G9UY1	FREDDIE MAC	6/29/16	6/29/18	1.00	25,000,000	25,000,000	25,000,000	24,948,000
Federal Agencies	3134G9UY1	FREDDIE MAC	6/29/16	6/29/18	1.00	25,000,000	25,000,000	25,000,000	24,948,000
Federal Agencies	3133EGBQ7	FEDERAL FARM CREDIT BANK	5/19/16	7/19/18	1.94	25,000,000	25,000,000	25,000,000	25,018,500
Federal Agencies	3133EGBQ7	FEDERAL FARM CREDIT BANK	5/19/16	7/19/18	1.94	25,000,000	25,000,000	25,000,000	25,018,500
Federal Agencies	3130A8U50	FEDERAL HOME LOAN BANK	7/29/16	7/25/18	0.83	22,250,000	22,223,211	22,245,757	22,173,905
Federal Agencies	3134G9Q67	FREDDIE MAC	7/27/16	7/27/18	1.05	25,000,000	25,000,000	25,000,000	24,938,500
Federal Agencies	3134G9Q67	FREDDIE MAC	7/27/16	7/27/18	1.05	25,000,000	24,993,750	24,998,998	24,938,500
Federal Agencies	3133EGFQ3	FEDERAL FARM CREDIT BANK	9/21/16	9/14/18	0.88	25,000,000	24,981,000	24,995,638	24,885,500
Federal Agencies	3130A9C90	FEDERAL HOME LOAN BANK	9/28/16	9/28/18	1.05	25,000,000	25,000,000	25,000,000	24,883,250

Investment Inventory

Pooled Fund

Type of Investment	CUSIP	Issuer Name	Settle Date	Maturity		Par Value	Book Value	Amortized	Market Value
				Date	Coupon			Book Value	
Federal Agencies	3133EGFK6	FEDERAL FARM CREDIT BANK	6/17/16	10/17/18	1.94	25,000,000	25,000,000	25,000,000	25,035,250
Federal Agencies	3133EGFK6	FEDERAL FARM CREDIT BANK	6/17/16	10/17/18	1.94	25,000,000	25,000,000	25,000,000	25,035,250
Federal Agencies	313376BR5	FEDERAL HOME LOAN BANK	11/8/17	12/14/18	1.75	2,770,000	2,775,337	2,773,420	2,764,100
Federal Agencies	313376BR5	FEDERAL HOME LOAN BANK	12/20/16	12/14/18	1.75	15,000,000	15,127,350	15,045,206	14,968,050
Federal Agencies	313376BR5	FEDERAL HOME LOAN BANK	8/23/17	12/14/18	1.75	25,000,000	25,136,250	25,073,256	24,946,750
Federal Agencies	3135G0G72	FANNIE MAE	11/8/17	12/14/18	1.13	3,775,000	3,756,648	3,763,238	3,750,425
Federal Agencies	3133EGDM4	FEDERAL FARM CREDIT BANK	6/2/16	1/2/19	1.83	25,000,000	25,000,000	25,000,000	25,035,500
Federal Agencies	3133EG2V6	FEDERAL FARM CREDIT BANK	1/3/17	1/3/19	1.74	25,000,000	25,000,000	25,000,000	25,015,250
Federal Agencies	3134GAH23	FREDDIE MAC	1/17/17	1/17/19	1.50	25,000,000	25,000,000	25,000,000	24,971,250
Federal Agencies	3130A8VZ3	FEDERAL HOME LOAN BANK	7/28/16	1/25/19	1.05	25,000,000	25,000,000	25,000,000	24,784,000
Federal Agencies	3132X0EK3	FARMER MAC	1/25/16	1/25/19	1.85	25,000,000	25,000,000	25,000,000	25,031,000
Federal Agencies	3134GAS39	FREDDIE MAC	2/1/17	2/1/19	1.50	25,000,000	25,000,000	25,000,000	24,972,750
Federal Agencies	3133EGBU8	FEDERAL FARM CREDIT BANK	5/25/16	2/25/19	2.05	50,000,000	50,000,000	50,000,000	50,120,000
Federal Agencies	3132X0ED9	FARMER MAC	1/19/16	3/19/19	2.25	40,000,000	40,000,000	40,000,000	40,106,800
Federal Agencies	3133EJHG7	FEDERAL FARM CREDIT BANK	3/22/18	3/22/19	2.13	25,000,000	24,993,050	24,993,240	24,997,500
Federal Agencies	3133EJHG7	FEDERAL FARM CREDIT BANK	3/22/18	3/22/19	2.13	25,000,000	24,993,050	24,993,240	24,997,500
Federal Agencies	3134GBFR8	FREDDIE MAC	4/5/17	4/5/19	1.40	25,000,000	25,000,000	25,000,000	24,756,500
Federal Agencies	3133EGAV7	FEDERAL FARM CREDIT BANK	12/5/17	5/17/19	1.17	50,350,000	49,891,060	49,969,829	49,752,346
Federal Agencies	3136G3QP3	FANNIE MAE	5/24/16	5/24/19	1.25	10,000,000	10,000,000	10,000,000	9,894,400
Federal Agencies	3130ABF92	FEDERAL HOME LOAN BANK	5/12/17	5/28/19	1.38	30,000,000	29,943,300	29,967,926	29,724,000
Federal Agencies	3133EHLG6	FEDERAL FARM CREDIT BANK	5/30/17	5/30/19	1.32	27,000,000	26,983,800	26,990,591	26,737,290
Federal Agencies	3133EHMR1	FEDERAL FARM CREDIT BANK	6/12/17	6/12/19	1.38	50,000,000	50,000,000	50,000,000	49,546,000
Federal Agencies	313379EE5	FEDERAL HOME LOAN BANK	6/9/17	6/14/19	1.63	25,000,000	25,105,750	25,063,162	24,835,500
Federal Agencies	313379EE5	FEDERAL HOME LOAN BANK	8/23/17	6/14/19	1.63	25,000,000	25,108,750	25,072,335	24,835,500
Federal Agencies	313379EE5	FEDERAL HOME LOAN BANK	8/9/17	6/14/19	1.63	35,750,000	35,875,840	35,831,964	35,514,765
Federal Agencies	3134G9QW0	FREDDIE MAC	6/14/16	6/14/19	1.28	50,000,000	50,000,000	50,000,000	49,463,500
Federal Agencies	3130AC7C2	FEDERAL HOME LOAN BANK	8/23/17	7/11/19	1.40	15,000,000	15,005,400	15,003,663	14,853,750
Federal Agencies	3134G9YR2	FREDDIE MAC	7/12/16	7/12/19	1.50	50,000,000	50,000,000	50,000,000	49,631,500
Federal Agencies	3133EGED3	FEDERAL FARM CREDIT BANK	6/9/16	8/9/19	1.90	25,000,000	25,000,000	25,000,000	25,079,000
Federal Agencies	3133EGED3	FEDERAL FARM CREDIT BANK	6/9/16	8/9/19	1.90	25,000,000	25,000,000	25,000,000	25,079,000
Federal Agencies	3134G94F1	FREDDIE MAC	8/15/16	8/15/19	1.25	25,000,000	25,000,000	25,000,000	24,670,500
Federal Agencies	3133EGXK6	FEDERAL FARM CREDIT BANK	12/20/16	8/20/19	1.94	50,000,000	50,000,000	50,000,000	50,098,000
Federal Agencies	3135G0P23	FANNIE MAE	8/30/16	8/23/19	1.25	20,000,000	20,000,000	20,000,000	19,727,600
Federal Agencies	3136G3X59	FANNIE MAE	8/23/16	8/23/19	1.10	25,000,000	25,000,000	25,000,000	24,610,500
Federal Agencies	3134G9GS0	FREDDIE MAC	5/26/16	8/26/19	1.25	25,000,000	25,000,000	25,000,000	24,659,750
Federal Agencies	3134GAFY5	FREDDIE MAC	11/28/17	8/28/19	1.30	8,450,000	8,374,795	8,389,412	8,330,686
Federal Agencies	3134GAHR8	FREDDIE MAC	9/23/16	9/23/19	1.50	25,000,000	25,000,000	25,000,000	24,869,750
Federal Agencies	3135G0Q30	FANNIE MAE	10/21/16	9/27/19	1.18	50,000,000	50,000,000	50,000,000	49,208,500
Federal Agencies	3132X0KH3	FARMER MAC	10/6/16	10/1/19	1.70	50,000,000	50,000,000	50,000,000	50,129,500
Federal Agencies	3133EGXK6	FEDERAL FARM CREDIT BANK	12/1/17	10/11/19	1.12	20,000,000	19,763,111	19,779,758	19,647,800
Federal Agencies	3134G8TG4	FREDDIE MAC	4/11/16	10/11/19	1.50	15,000,000	15,000,000	15,000,000	14,826,750
Federal Agencies	3130ACM92	FEDERAL HOME LOAN BANK	10/13/17	10/21/19	1.50	21,500,000	21,461,945	21,470,711	21,252,535
Federal Agencies	3136G0T68	FANNIE MAE	8/28/17	10/24/19	1.33	14,000,000	13,968,220	13,976,942	13,785,940
Federal Agencies	3134GBHT2	FREDDIE MAC	9/12/17	10/25/19	1.63	50,000,000	50,024,500	50,018,129	49,484,500
Federal Agencies	3136G4FJ7	FANNIE MAE	10/25/16	10/25/19	1.20	25,000,000	25,000,000	25,000,000	24,589,250
Federal Agencies	3136G4EZ2	FANNIE MAE	10/28/16	10/30/19	1.13	50,000,000	49,950,000	49,973,701	49,113,000
Federal Agencies	3134GAVL5	FREDDIE MAC	11/4/16	11/4/19	1.17	100,000,000	100,000,000	100,000,000	98,269,000
Federal Agencies	3136G3LV5	FANNIE MAE	5/26/16	11/26/19	1.35	8,950,000	8,950,000	8,950,000	8,816,019
Federal Agencies	3133EGN43	FEDERAL FARM CREDIT BANK	12/2/16	12/2/19	1.83	50,000,000	50,000,000	50,000,000	50,158,500
Federal Agencies	3130A0JR2	FEDERAL HOME LOAN BANK	12/15/17	12/13/19	2.38	11,360,000	11,466,387	11,449,472	11,369,429

Investment Inventory

Pooled Fund

Type of Investment	CUSIP	Issuer Name	Settle Date	Maturity		Par Value	Book Value	Amortized	
				Date	Coupon			Book Value	Market Value
Federal Agencies	3130A0JR2	FEDERAL HOME LOAN BANK	12/12/17	12/13/19	2.38	20,000,000	20,186,124	20,158,116	20,016,600
Federal Agencies	3130A0JR2	FEDERAL HOME LOAN BANK	12/15/17	12/13/19	2.38	40,000,000	40,374,478	40,314,936	40,033,200
Federal Agencies	3132X0PG0	FARMER MAC	2/10/17	1/3/20	1.76	50,000,000	50,000,000	50,000,000	50,091,000
Federal Agencies	3134G9VR5	FREDDIE MAC	7/6/16	1/6/20	1.38	25,000,000	25,000,000	25,000,000	24,702,000
Federal Agencies	3136G4KQ5	FANNIE MAE	11/17/17	1/17/20	1.65	1,000,000	996,070	996,741	988,840
Federal Agencies	3136G4KQ5	FANNIE MAE	11/17/17	1/17/20	1.65	31,295,000	31,172,011	31,193,001	30,945,748
Federal Agencies	3130ADN32	FEDERAL HOME LOAN BANK	2/9/18	2/11/20	2.13	50,000,000	49,908,500	49,914,875	49,793,000
Federal Agencies	313378J77	FEDERAL HOME LOAN BANK	5/17/17	3/13/20	1.88	15,710,000	15,843,849	15,802,435	15,560,127
Federal Agencies	3133EHZN6	FEDERAL FARM CREDIT BANK	9/20/17	3/20/20	1.45	20,000,000	19,979,400	19,983,759	19,656,600
Federal Agencies	3133EJHL6	FEDERAL FARM CREDIT BANK	3/27/18	3/27/20	2.38	50,000,000	49,964,000	49,964,246	50,001,500
Federal Agencies	3136G3TK1	FANNIE MAE	7/6/16	4/6/20	1.50	25,000,000	25,000,000	25,000,000	24,810,250
Federal Agencies	3136G4BL6	FANNIE MAE	10/17/16	4/17/20	1.25	15,000,000	15,000,000	15,000,000	14,674,800
Federal Agencies	3134GBLY6	FREDDIE MAC	5/8/17	5/8/20	1.50	25,000,000	25,000,000	25,000,000	24,917,750
Federal Agencies	3134GBPB2	FREDDIE MAC	5/30/17	5/22/20	1.70	15,750,000	15,750,000	15,750,000	15,517,215
Federal Agencies	3133EHNK5	FEDERAL FARM CREDIT BANK	6/15/17	6/15/20	1.54	25,000,000	24,997,500	24,998,162	24,540,750
Federal Agencies	3133EHNK5	FEDERAL FARM CREDIT BANK	6/15/17	6/15/20	1.54	26,900,000	26,894,620	26,896,044	26,405,847
Federal Agencies	3134GBST0	FREDDIE MAC	6/22/17	6/22/20	1.65	14,675,000	14,675,000	14,675,000	14,433,743
Federal Agencies	3134GBTX0	FREDDIE MAC	6/29/17	6/29/20	1.75	50,000,000	49,990,000	49,992,518	49,232,500
Federal Agencies	3136G3TG0	FANNIE MAE	6/30/16	6/30/20	1.15	15,000,000	15,000,000	15,000,000	14,714,100
Federal Agencies	3134GB5M0	FREDDIE MAC	12/1/17	7/1/20	1.96	50,000,000	50,000,000	50,000,000	49,596,000
Federal Agencies	3133EHQB2	FEDERAL FARM CREDIT BANK	7/6/17	7/6/20	1.55	25,000,000	24,989,961	24,992,425	24,527,500
Federal Agencies	3130ABNV4	FEDERAL HOME LOAN BANK	7/13/17	7/13/20	1.75	50,000,000	50,000,000	50,000,000	49,293,500
Federal Agencies	3134GBXV9	FREDDIE MAC	7/13/17	7/13/20	1.85	50,000,000	50,000,000	50,000,000	49,257,500
Federal Agencies	3135G0T60	FANNIE MAE	8/1/17	7/30/20	1.50	50,000,000	49,848,500	49,882,151	48,997,500
Federal Agencies	3130ABZE9	FEDERAL HOME LOAN BANK	8/28/17	8/28/20	1.65	6,700,000	6,699,330	6,699,462	6,584,291
Federal Agencies	3130ABZN9	FEDERAL HOME LOAN BANK	8/28/17	8/28/20	1.80	25,000,000	25,000,000	25,000,000	24,630,500
Federal Agencies	3130ABZN9	FEDERAL HOME LOAN BANK	8/28/17	8/28/20	1.80	50,000,000	50,000,000	50,000,000	49,261,000
Federal Agencies	3130ADT93	FEDERAL HOME LOAN BANK	3/14/18	9/14/20	2.40	25,000,000	24,984,458	24,984,763	25,003,000
Federal Agencies	3130ACE26	FEDERAL HOME LOAN BANK	9/8/17	9/28/20	1.38	18,000,000	17,942,220	17,952,834	17,558,640
Federal Agencies	3130ACE26	FEDERAL HOME LOAN BANK	9/8/17	9/28/20	1.38	30,000,000	29,903,700	29,921,390	29,264,400
Federal Agencies	3130ACK52	FEDERAL HOME LOAN BANK	3/12/18	10/5/20	1.70	25,530,000	25,224,378	25,045,653	25,069,949
Federal Agencies	3132X0KR1	FARMER MAC	11/2/16	11/2/20	1.87	25,000,000	25,000,000	25,000,000	25,124,000
Federal Agencies	3132X0ZF1	FARMER MAC	11/13/17	11/9/20	1.93	12,000,000	11,972,573	11,973,819	11,839,080
Federal Agencies	3137EAEK1	FREDDIE MAC	11/15/17	11/17/20	1.88	50,000,000	49,952,000	49,957,989	49,264,000
Federal Agencies	3134GBX56	FREDDIE MAC	11/24/17	11/24/20	2.25	60,000,000	60,223,200	60,197,133	59,708,400
Federal Agencies	3134GBLR1	FREDDIE MAC	5/25/17	11/25/20	1.75	24,715,000	24,712,529	24,713,129	24,231,080
Federal Agencies	3133EHW58	FEDERAL FARM CREDIT BANK	11/27/17	11/27/20	1.90	25,000,000	24,992,629	24,993,470	24,649,250
Federal Agencies	3133EHW58	FEDERAL FARM CREDIT BANK	11/27/17	11/27/20	1.90	25,000,000	24,992,629	24,993,470	24,649,250
Federal Agencies	3130A3UQ5	FEDERAL HOME LOAN BANK	12/13/17	12/11/20	1.88	10,000,000	9,958,642	9,961,825	9,854,500
Federal Agencies	3132X0ZY0	FARMER MAC	12/15/17	12/15/20	2.05	12,750,000	12,741,458	12,742,291	12,591,645
Federal Agencies	3133EGX75	FEDERAL FARM CREDIT BANK	12/21/16	12/21/20	2.03	50,000,000	50,000,000	50,000,000	50,214,000
Federal Agencies	3133EFTX5	FEDERAL FARM CREDIT BANK	12/24/15	12/24/20	2.20	100,000,000	100,000,000	100,000,000	100,717,000
Federal Agencies	3133EG4T9	FEDERAL FARM CREDIT BANK	1/25/17	1/25/21	2.03	20,000,000	20,000,000	20,000,000	20,075,200
Federal Agencies	3133EG4T9	FEDERAL FARM CREDIT BANK	1/25/17	1/25/21	2.03	20,000,000	20,000,000	20,000,000	20,075,200
Federal Agencies	3130AC2K9	FEDERAL HOME LOAN BANK	9/20/17	2/10/21	1.87	50,200,000	50,189,960	50,191,524	49,367,182
Federal Agencies	3137EAE19	FREDDIE MAC	2/16/18	2/16/21	2.38	22,000,000	21,941,920	21,944,252	21,937,740
Federal Agencies	3134GBD58	FREDDIE MAC	8/30/17	2/26/21	1.80	5,570,000	5,569,443	5,569,536	5,452,696
Federal Agencies	3130AAYP7	FEDERAL HOME LOAN BANK	8/11/17	3/22/21	2.20	8,585,000	8,593,327	8,591,856	8,585,172
Federal Agencies	3132X0Q53	FARMER MAC	3/29/18	3/29/21	2.60	6,350,000	6,343,079	6,343,097	6,356,604
Federal Agencies	3132X0Q53	FARMER MAC	3/29/18	3/29/21	2.60	20,450,000	20,427,710	20,427,771	20,471,268

Investment Inventory

Pooled Fund

Type of Investment	CUSIP	Issuer Name	Settle Date	Maturity		Coupon	Par Value	Book Value	Amortized	
				Date					Book Value	Market Value
Federal Agencies	3134GBJP8	FREDDIE MAC	11/16/17	5/3/21	1.89	22,000,000	21,889,615	21,888,092	21,528,320	
Federal Agencies	3130ACVS0	FEDERAL HOME LOAN BANK	11/30/17	6/15/21	2.13	50,000,000	50,000,000	50,000,000	49,230,000	
Federal Agencies	3130ACVS0	FEDERAL HOME LOAN BANK	11/30/17	6/15/21	2.13	50,000,000	50,000,000	50,000,000	49,230,000	
Federal Agencies	3134GBJ60	FREDDIE MAC	9/29/17	6/29/21	1.90	50,000,000	50,000,000	50,000,000	48,900,500	
Federal Agencies	3134G9H26	FREDDIE MAC	1/29/18	6/30/21	1.50	1,219,000	1,203,407	1,202,782	1,199,789	
Federal Agencies	3134G9H26	FREDDIE MAC	1/25/18	6/30/21	1.50	3,917,000	3,874,076	3,872,474	3,855,268	
Federal Agencies	3130ACQ98	FEDERAL HOME LOAN BANK	11/1/17	7/1/21	2.08	100,000,000	100,000,000	100,000,000	98,412,000	
Federal Agencies	3134GBM25	FREDDIE MAC	10/2/17	7/1/21	1.92	50,000,000	50,000,000	50,000,000	48,953,500	
Federal Agencies	3130ACF33	FEDERAL HOME LOAN BANK	9/18/17	9/13/21	1.88	25,000,000	24,927,500	24,937,210	24,400,250	
Federal Agencies	3135G0Q89	FANNIE MAE	10/21/16	10/7/21	1.38	25,000,000	25,000,000	25,000,000	24,026,000	
Federal Agencies	3133EGZJ7	FEDERAL FARM CREDIT BANK	10/25/16	10/25/21	1.38	14,500,000	14,500,000	14,500,000	13,911,445	
Federal Agencies	3133EGZJ7	FEDERAL FARM CREDIT BANK	10/25/16	10/25/21	1.38	15,000,000	15,000,000	15,000,000	14,391,150	
Federal Agencies	3133EGS97	FEDERAL FARM CREDIT BANK	12/8/16	12/8/21	1.98	25,000,000	25,000,000	25,000,000	25,148,000	
Federal Agencies	3133EGS97	FEDERAL FARM CREDIT BANK	12/8/16	12/8/21	1.98	25,000,000	25,000,000	25,000,000	25,148,000	
Federal Agencies	3130ACB60	FEDERAL HOME LOAN BANK	9/8/17	12/15/21	2.00	50,000,000	50,000,000	50,000,000	48,737,500	
Federal Agencies	3135G0T45	FANNIE MAE	6/6/17	4/5/22	1.88	25,000,000	25,072,250	25,060,004	24,344,500	
Federal Agencies	3134GBQG0	FREDDIE MAC	5/25/17	5/25/22	2.18	50,000,000	50,000,000	50,000,000	48,917,500	
Federal Agencies	3133EHLY7	FEDERAL FARM CREDIT BANK	6/6/17	6/2/22	1.88	50,000,000	50,059,250	50,049,527	48,528,500	
Federal Agencies	3133EHLY7	FEDERAL FARM CREDIT BANK	6/9/17	6/2/22	1.88	50,000,000	49,997,500	49,997,907	48,528,500	
Federal Agencies	3134GBF72	FREDDIE MAC	9/15/17	6/15/22	2.01	50,000,000	50,000,000	50,000,000	48,466,000	
Federal Agencies	3134GBN73	FREDDIE MAC	10/2/17	7/1/22	2.07	50,000,000	50,000,000	50,000,000	48,772,000	
Federal Agencies	3134GBW99	FREDDIE MAC	11/1/17	7/1/22	2.24	100,000,000	100,000,000	100,000,000	98,077,000	
Federal Agencies	3134GBXU1	FREDDIE MAC	7/27/17	7/27/22	2.25	31,575,000	31,575,000	31,575,000	30,786,888	
Federal Agencies	3130AC7E8	FEDERAL HOME LOAN BANK	9/1/17	9/1/22	2.17	50,000,000	50,000,000	50,000,000	48,509,000	
Subtotals					1.70	\$ 4,596,776,000	\$ 4,595,724,972	\$ 4,595,194,301	\$ 4,551,885,764	
State/Local Agencies	91412GL52	UNIV OF CALIFORNIA CA REVENUE	6/30/16	5/15/18	0.99	\$ 2,470,000	\$ 2,470,000	\$ 2,470,000	\$ 2,466,517	
State/Local Agencies	546456CY8	LOUISIANA ST CITIZENS PROPERT	11/30/16	6/1/18	6.13	4,500,000	4,822,065	4,535,850	4,533,435	
State/Local Agencies	603786GJ7	MINNEAPOLIS MN REVENUE	12/1/16	8/1/18	4.88	1,000,000	1,057,030	1,011,444	1,010,670	
State/Local Agencies	13063C4V9	CALIFORNIA ST	11/3/16	11/1/18	1.05	50,000,000	50,147,500	50,043,359	49,683,500	
State/Local Agencies	13063DAB4	CALIFORNIA ST	4/27/17	4/1/19	1.59	23,000,000	23,000,000	23,000,000	22,853,260	
State/Local Agencies	13063CKL3	CALIFORNIA ST	10/27/16	5/1/19	2.25	4,750,000	4,879,058	4,805,653	4,750,428	
State/Local Agencies	91412GL60	UNIV OF CALIFORNIA CA REVENUE	6/30/16	5/15/19	1.23	2,000,000	2,000,000	2,000,000	1,974,540	
State/Local Agencies	91412GSB2	UNIV OF CALIFORNIA CA REVENUE	10/5/15	7/1/19	1.80	4,180,000	4,214,443	4,191,506	4,161,650	
State/Local Agencies	91412GSB2	UNIV OF CALIFORNIA CA REVENUE	10/2/15	7/1/19	1.80	16,325,000	16,461,640	16,370,547	16,253,333	
State/Local Agencies	6055804W6	MISSISSIPPI ST	4/23/15	10/1/19	6.09	8,500,000	10,217,510	9,080,268	8,919,560	
State/Local Agencies	977100CW4	WISCONSIN ST GEN FUND ANNUAL	8/16/16	5/1/20	1.45	18,000,000	18,000,000	18,000,000	17,603,640	
State/Local Agencies	13066YTY5	CALIFORNIA ST DEPT OF WTR RES	2/6/17	5/1/21	1.71	29,139,823	28,646,777	28,780,490	28,436,388	
State/Local Agencies	91412GF59	UNIV OF CALIFORNIA CA REVENUE	8/9/16	5/15/21	1.91	1,769,000	1,810,695	1,796,318	1,735,548	
Subtotals					1.86	\$ 165,633,823	\$ 167,726,719	\$ 166,085,434	\$ 164,382,469	
Public Time Deposits	PP302GIL3	BANK OF SAN FRANCISCO	4/11/17	4/11/18	1.37	\$ 240,000	\$ 240,000	\$ 240,000	\$ 240,000	
Public Time Deposits	PPA01U877	PREFERRED BANK LA CALIF	5/16/17	5/16/18	1.44	240,000	240,000	240,000	240,000	
Public Time Deposits	PPA30X603	SAN FRANCISCO CREDIT UNION	3/5/18	6/5/18	1.58	9,500,000	9,500,000	9,500,000	9,500,000	
Public Time Deposits	PPQD16IX7	BRIDGE BANK	3/27/18	6/25/18	1.73	10,000,000	10,000,000	10,000,000	10,000,000	
Public Time Deposits	PPF00EG70	BANK OF SAN FRANCISCO	3/16/18	9/12/18	1.91	5,000,000	5,000,000	5,000,000	5,000,000	
Subtotals					1.70	\$ 24,980,000	\$ 24,980,000	\$ 24,980,000	\$ 24,980,000	

Investment Inventory

Pooled Fund

Type of Investment	CUSIP	Issuer Name	Settle Date	Maturity		Coupon	Par Value	Book Value	Amortized	
				Date					Book Value	Market Value
Negotiable CDs	78009N5U6	ROYAL BANK OF CANADA NY	12/22/17	4/24/18	1.78	\$ 50,000,000	\$ 50,000,000	\$ 50,000,000	\$ 50,003,056	
Negotiable CDs	78009NT63	ROYAL BANK OF CANADA NY	5/10/17	5/10/18	1.47	50,000,000	50,000,000	50,000,000	49,987,119	
Negotiable CDs	06417GZN1	BANK OF NOVA SCOTIA HOUSTON	10/16/17	5/14/18	1.54	50,000,000	50,000,000	50,000,000	49,990,734	
Negotiable CDs	06417GX9	BANK OF NOVA SCOTIA HOUSTON	8/30/17	5/25/18	1.48	35,000,000	35,000,000	35,000,000	34,988,548	
Negotiable CDs	89113W2C9	TORONTO DOMINION BANK NY	6/2/17	6/4/18	1.46	50,000,000	50,000,000	50,000,000	49,978,347	
Negotiable CDs	78009NU46	ROYAL BANK OF CANADA NY	6/12/17	6/12/18	2.20	50,000,000	50,000,000	50,000,000	50,052,487	
Negotiable CDs	89113XBB9	TORONTO DOMINION BANK NY	8/10/17	6/15/18	1.50	50,000,000	50,000,000	50,000,000	49,979,352	
Negotiable CDs	89113XBV5	TORONTO DOMINION BANK NY	8/16/17	6/15/18	1.50	50,000,000	50,000,000	50,000,000	49,979,396	
Negotiable CDs	06371EDT1	BANK OF MONTREAL CHICAGO	7/6/17	7/2/18	1.87	50,000,000	50,000,000	50,000,000	49,967,820	
Negotiable CDs	06371EMD6	BANK OF MONTREAL CHICAGO	9/1/17	7/2/18	1.50	50,000,000	50,000,000	50,000,000	49,917,959	
Negotiable CDs	06371EQ77	BANK OF MONTREAL CHICAGO	10/4/17	7/2/18	1.86	50,000,000	50,000,000	50,000,000	49,966,533	
Negotiable CDs	06371EXP7	BANK OF MONTREAL CHICAGO	12/8/17	7/2/18	1.75	50,000,000	50,000,000	50,000,000	49,950,973	
Negotiable CDs	78009N6F8	ROYAL BANK OF CANADA NY	1/4/18	7/2/18	1.82	50,000,000	50,000,000	50,000,000	49,960,277	
Negotiable CDs	89113W5H5	TORONTO DOMINION BANK NY	7/6/17	7/2/18	1.55	50,000,000	50,000,000	50,000,000	49,923,634	
Negotiable CDs	89113XAT1	TORONTO DOMINION BANK NY	8/8/17	7/2/18	1.48	50,000,000	50,000,000	50,000,000	49,915,152	
Negotiable CDs	96121T3R7	WESTPAC BANKING CORP NY	7/7/17	7/2/18	1.82	50,000,000	50,000,000	50,000,000	49,961,385	
Negotiable CDs	06371E2G1	BANK OF MONTREAL CHICAGO	3/29/18	7/9/18	2.25	25,000,000	25,000,000	25,000,000	25,008,957	
Negotiable CDs	78009NX50	ROYAL BANK OF CANADA NY	7/24/17	7/24/18	2.07	50,000,000	50,000,000	50,000,000	49,992,277	
Negotiable CDs	96121T3W6	WESTPAC BANKING CORP NY	7/26/17	7/26/18	2.02	50,000,000	50,000,000	50,000,000	49,984,041	
Negotiable CDs	96121T4D7	WESTPAC BANKING CORP NY	8/9/17	8/9/18	1.53	50,000,000	50,000,000	50,000,000	49,889,668	
Negotiable CDs	89113XWK6	TORONTO DOMINION BANK NY	2/5/18	8/31/18	2.00	50,000,000	50,000,000	50,000,000	49,973,388	
Negotiable CDs	06371EN60	BANK OF MONTREAL CHICAGO	2/9/18	9/6/18	2.05	25,000,000	25,000,000	25,000,000	24,991,682	
Negotiable CDs	06417GK72	BANK OF NOVA SCOTIA HOUSTON	2/14/18	9/17/18	2.09	50,000,000	50,000,000	50,000,000	49,991,692	
Negotiable CDs	65602UP85	NORINCHUKIN BANK (NY)	3/29/18	9/28/18	2.28	50,000,000	50,000,000	50,000,000	49,999,209	
Negotiable CDs	06371EQJ9	BANK OF MONTREAL CHICAGO	10/3/17	10/1/18	1.88	50,000,000	50,000,000	50,000,000	49,899,978	
Negotiable CDs	96121T4S4	WESTPAC BANKING CORP NY	10/11/17	10/15/18	1.97	50,000,000	50,000,000	50,000,000	49,914,387	
Negotiable CDs	06371ERP4	BANK OF MONTREAL CHICAGO	10/16/17	10/25/18	2.08	45,000,000	45,000,000	45,000,000	44,948,756	
Negotiable CDs	06417GZR2	BANK OF NOVA SCOTIA HOUSTON	10/25/17	10/25/18	2.07	50,000,000	50,000,000	50,000,000	49,940,195	
Negotiable CDs	89113XJJ4	TORONTO DOMINION BANK NY	10/18/17	10/25/18	2.07	50,000,000	50,000,000	50,000,000	49,940,195	
Negotiable CDs	06417GZT8	BANK OF NOVA SCOTIA HOUSTON	11/2/17	11/9/18	1.92	50,000,000	50,000,000	50,000,000	49,888,721	
Negotiable CDs	89113XLP7	TORONTO DOMINION BANK NY	11/2/17	11/9/18	1.91	50,000,000	50,000,000	50,000,000	49,885,648	
Negotiable CDs	78009N3T1	ROYAL BANK OF CANADA NY	11/20/17	11/20/18	1.83	50,000,000	50,000,000	50,000,000	49,851,023	
Negotiable CDs	78012UAW5	ROYAL BANK OF CANADA NY	2/27/18	11/27/18	2.18	25,000,000	25,000,000	25,000,000	24,982,567	
Negotiable CDs	89113XQJ6	TORONTO DOMINION BANK NY	12/6/17	12/6/18	1.92	25,000,000	25,000,000	25,000,000	24,938,124	
Negotiable CDs	89113XQJ6	TORONTO DOMINION BANK NY	12/6/17	12/6/18	1.92	50,000,000	50,000,000	50,000,000	49,876,248	
Negotiable CDs	06417GC48	BANK OF NOVA SCOTIA HOUS	12/7/17	12/7/18	1.93	50,000,000	50,000,000	50,000,000	49,880,377	
Negotiable CDs	78009N5B8	ROYAL BANK OF CANADA NY	12/8/17	12/7/18	1.93	50,000,000	50,000,000	50,000,000	49,879,614	
Negotiable CDs	96121T5B0	WESTPAC BANKING CORP NY	12/7/17	12/7/18	1.90	50,000,000	50,000,000	50,000,000	49,869,248	
Negotiable CDs	78009N5M4	ROYAL BANK OF CANADA NY	12/19/17	12/19/18	2.05	50,000,000	50,000,000	50,000,000	49,916,067	
Negotiable CDs	96121T5K0	WESTPAC BANKING CORP NY	12/27/17	12/21/18	2.07	50,000,000	50,000,000	50,000,000	49,923,627	
Negotiable CDs	06371EA64	BANK OF MONTREAL CHICAGO	12/27/17	12/24/18	2.05	25,000,000	25,000,000	25,000,000	24,955,675	
Negotiable CDs	96121T5M6	WESTPAC BANKING CORP NY	12/28/17	12/28/18	2.11	50,000,000	50,000,000	50,000,000	49,894,091	
Negotiable CDs	06371EFH5	BANK OF MONTREAL CHICAGO	7/17/17	1/17/19	1.96	50,000,000	50,000,000	50,000,000	49,829,055	
Negotiable CDs	06371EL21	BANK OF MONTREAL CHICAGO	1/29/18	1/23/19	2.11	25,000,000	25,000,000	25,000,000	24,943,337	
Negotiable CDs	96121T7B8	WESTPAC BANKING CORP NY	3/5/18	3/5/19	2.21	50,000,000	50,000,000	50,000,000	49,826,115	
Negotiable CDs	06427KSW8	BANK OF MONTREAL CHICAGO	3/9/17	3/8/19	2.33	27,838,000	27,838,000	27,838,000	27,821,458	
Negotiable CDs	78012UCE3	ROYAL BANK OF CANADA NY	3/28/18	4/1/19	2.36	50,000,000	50,000,000	50,000,000	49,933,229	
Subtotals					1.89	\$ 2,157,838,000	\$ 2,157,838,000	\$ 2,157,838,000	\$ 2,155,091,420	

Investment Inventory

Pooled Fund

Type of Investment	CUSIP	Issuer Name	Settle Date	Maturity		Coupon	Par Value	Book Value	Amortized	
				Date	Date				Book Value	Market Value
Commercial Paper	19416FD27	COLGATE-PALMOLIVE CO	3/29/18	4/2/18	0.00	\$ 18,000,000	\$ 17,996,620	\$ 17,999,155	\$ 17,999,035	
Commercial Paper	89233HD27	TOYOTA MOTOR CREDIT CORP	12/15/17	4/2/18	0.00	50,000,000	49,748,000	49,997,667	49,997,319	
Commercial Paper	19416FD50	COLGATE-PALMOLIVE CO	3/29/18	4/5/18	0.00	60,000,000	59,979,933	59,988,533	59,987,133	
Commercial Paper	06538CDQ1	BANK TOKYO-MIT UFJ NY	10/18/17	4/24/18	0.00	40,000,000	39,680,400	39,960,900	39,950,678	
Commercial Paper	06538CDW8	BANK TOKYO-MIT UFJ NY	1/4/18	4/30/18	0.00	50,000,000	49,718,056	49,929,514	49,922,264	
Commercial Paper	89233HEE0	TOYOTA MOTOR CREDIT CORPOR/	1/22/18	5/14/18	0.00	50,000,000	49,727,778	49,895,486	49,884,736	
Commercial Paper	06538CF89	BANK TOKYO-MIT UFJ NY	9/12/17	6/8/18	0.00	50,000,000	49,417,167	49,417,167	49,809,222	
Commercial Paper	06538CFF3	BANK TOKYO-MIT UFJ NY	9/19/17	6/15/18	0.00	50,000,000	49,417,167	49,837,500	49,789,583	
Commercial Paper	06538CG21	BANK TOKYO-MIT UFJ NY	3/26/18	7/2/18	0.00	45,000,000	44,715,800	44,733,200	44,751,600	
Commercial Paper	06538CG21	BANK TOKYO-MIT UFJ NY	1/4/18	7/2/18	0.00	50,000,000	49,545,042	49,766,167	49,724,000	
Commercial Paper	06538CG21	BANK TOKYO-MIT UFJ NY	3/1/18	7/2/18	0.00	50,000,000	49,642,958	49,732,944	49,724,000	
Commercial Paper	89233HGP3	TOYOTA MOTOR CREDIT CORP	3/28/18	7/23/18	0.00	50,000,000	49,623,000	49,635,889	49,661,000	
Commercial Paper	06538CKK6	BANK TOKYO-MIT UFJ NY	1/22/18	10/19/18	0.00	25,000,000	24,615,625	24,713,854	24,671,979	
Commercial Paper	06538CKK6	BANK TOKYO-MIT UFJ NY	1/24/18	10/19/18	0.00	45,000,000	44,313,250	44,484,938	44,409,563	
Commercial Paper	06538CKN0	BANK TOKYO-MIT UFJ NY	1/25/18	10/22/18	0.00	25,000,000	24,613,750	24,708,167	24,667,083	
Commercial Paper	89233HL93	TOYOTA MOTOR CREDIT CORP	2/15/18	11/9/18	0.00	50,000,000	49,184,167	49,321,667	49,275,417	
Subtotals					0.00	\$ 708,000,000	\$ 701,938,712	\$ 704,122,747	\$ 704,224,613	
Medium Term Notes	89236TDN2	TOYOTA MOTOR CREDIT CORP	1/9/17	1/9/19	1.96	\$ 50,000,000	\$ 50,000,000	\$ 50,000,000	\$ 50,054,000	
Medium Term Notes	89236TEJ0	TOYOTA MOTOR CREDIT CORP	1/11/18	1/10/20	2.20	20,000,000	19,982,200	19,984,153	19,823,600	
Subtotals					2.03	\$ 70,000,000	\$ 69,982,200	\$ 69,984,153	\$ 69,877,600	
Money Market Funds	09248U718	BLACKROCK LIQ INST GOV FUND	3/29/18	4/1/18	1.55	\$ 50,031,507	\$ 50,031,507	\$ 50,031,507	\$ 50,031,507	
Money Market Funds	31607A703	FIDELITY INST GOV FUND	3/29/18	4/1/18	1.42	245,810,159	245,810,159	245,810,159	245,810,159	
Money Market Funds	61747C707	MORGAN STANLEY INST GOVT FUN	3/29/18	4/1/18	1.61	100,671,769	100,671,769	100,671,769	100,671,769	
Subtotals					1.48	\$ 396,513,435	\$ 396,513,435	\$ 396,513,435	\$ 396,513,435	
Supranationals	459053VH4	INTL BK RECON & DEVELOP DISCO	3/28/18	4/9/18	0.00	\$ 50,000,000	\$ 49,973,333	\$ 49,982,222	\$ 49,984,000	
Supranationals	4581X0BR8	INTER-AMERICAN DEVEL BK	12/28/17	8/24/18	1.75	16,000,000	16,002,560	16,001,553	15,983,840	
Supranationals	459058ER0	INTL BK RECON & DEVELOP	10/7/15	10/5/18	1.00	25,000,000	24,957,500	24,992,735	24,872,750	
Supranationals	45950VLM6	INTERNATIONAL FINANCE CORP	3/1/18	3/1/19	1.67	50,000,000	50,000,000	50,000,000	49,986,500	
Supranationals	459058FQ1	INTL BANK RECON & DEVELOPMEN	11/6/17	9/30/19	1.20	50,000,000	49,483,894	49,592,626	49,179,500	
Supranationals	45905UZJ6	INTL BANK RECON & DEVELOPMEN	6/2/17	10/25/19	1.30	25,000,000	24,845,000	24,898,674	24,567,000	
Supranationals	45905UZJ6	INTL BK RECON & DEVELOP	6/2/17	10/25/19	1.30	29,300,000	29,118,340	29,181,246	28,792,524	
Supranationals	459058FZ1	INTL BK RECON & DEVELOP	3/21/17	4/21/20	1.88	50,000,000	49,956,500	49,971,013	49,454,500	
Supranationals	4581X0CX4	INTER-AMERICAN DEVEL BK	4/12/17	5/12/20	1.63	25,000,000	24,940,750	24,959,377	24,633,750	
Supranationals	459058GA5	INTL BK RECON & DEVELOPMENT	8/29/17	9/4/20	1.63	50,000,000	49,989,500	49,991,549	48,982,000	
Supranationals	45905UQ80	INTL BK RECON & DEVELOP	11/9/17	11/9/20	1.95	50,000,000	49,965,000	49,969,567	49,310,000	
Supranationals	45905UQ80	INTL BK RECON & DEVELOP	12/20/17	11/9/20	1.95	50,000,000	49,829,542	49,745,716	49,310,000	
Supranationals	45950KCM0	INTERNATIONAL FINANCE CORP	1/25/18	1/25/21	2.25	50,000,000	49,853,000	49,861,852	49,592,000	
Subtotals					1.52	\$ 520,300,000	\$ 518,914,919	\$ 519,148,131	\$ 514,648,364	
Grand Totals					1.50	\$ 9,765,041,258	\$ 9,751,962,546	\$ 9,753,514,671	\$ 9,694,484,447	

Monthly Investment Earnings

Pooled Fund

For month ended March 31, 2018

Type of Investment	CUSIP	Issuer Name	Par Value	Coupon	YTM ¹	Settle Date	Maturity		Amort. Expense	Realized Gain/(Loss)	Earned Income /Net Earnings
							Date	Earned Interest			
U.S. Treasuries	912796LS6	TREASURY BILL	\$ -	0.00	1.45	12/28/17	3/29/18	\$ -	\$ 56,194	\$ -	\$ 56,194
U.S. Treasuries	912796LS6	TREASURY BILL	-	0.00	1.63	3/28/18	3/29/18	-	2,268	-	2,268
U.S. Treasuries	912796NY1	TREASURY BILL	50,000,000	0.00	1.55	3/8/18	4/5/18	-	51,667	-	51,667
U.S. Treasuries	912796PB9	TREASURY BILL	100,000,000	0.00	1.43	1/18/18	4/19/18	-	122,278	-	122,278
U.S. Treasuries	912796LX5	TREASURY BILL	25,000,000	0.00	1.07	4/27/17	4/26/18	22,819	-	-	22,819
U.S. Treasuries	912796PC7	TREASURY BILL	100,000,000	0.00	1.43	2/1/18	5/3/18	-	122,708	-	122,708
U.S. Treasuries	912828XF2	US TREASURY	50,000,000	1.13	1.26	6/14/17	6/15/18	47,905	5,790	-	53,695
U.S. Treasuries	912796NQ8	TREASURY BILL	50,000,000	0.00	1.77	2/13/18	8/16/18	-	75,347	-	75,347
U.S. Treasuries	9128282C3	US TREASURY	25,000,000	0.75	1.82	2/14/18	8/31/18	15,795	22,323	-	38,118
U.S. Treasuries	912796QA0	TREASURY BILL	50,000,000	0.00	1.92	3/29/18	9/27/18	-	7,906	-	7,906
U.S. Treasuries	912796QA0	TREASURY BILL	50,000,000	0.00	1.90	3/29/18	9/27/18	-	7,858	-	7,858
U.S. Treasuries	912828L81	US TREASURY	50,000,000	0.88	1.68	12/13/17	10/15/18	37,260	33,835	-	71,095
U.S. Treasuries	912828L81	US TREASURY	50,000,000	0.88	1.75	1/10/18	10/15/18	37,260	36,589	-	73,849
U.S. Treasuries	912828T83	US TREASURY	25,000,000	0.75	1.92	2/15/18	10/31/18	16,057	24,524	-	40,580
U.S. Treasuries	912828WD8	US TREASURY	50,000,000	1.25	1.71	12/19/17	10/31/18	53,522	19,160	-	72,683
U.S. Treasuries	912828V56	US TREASURY	50,000,000	1.13	2.03	2/15/18	1/31/19	48,170	37,712	-	85,882
U.S. Treasuries	912796PT0	TREASURY BILL	50,000,000	0.00	2.06	3/1/18	2/28/19	-	86,972	-	86,972
U.S. Treasuries	912828XS4	US TREASURY	50,000,000	1.25	1.36	6/20/17	5/31/19	53,228	4,520	-	57,748
U.S. Treasuries	9128283N8	US TREASURY	50,000,000	1.88	2.01	1/16/18	12/31/19	80,283	5,597	-	85,880
U.S. Treasuries	912828XU9	US TREASURY	50,000,000	1.50	1.51	6/20/17	6/15/20	63,874	499	-	64,373
U.S. Treasuries	912828S27	US TREASURY	25,000,000	1.13	1.64	8/15/17	6/30/21	24,085	10,526	-	34,611
U.S. Treasuries	912828T67	US TSY NT	50,000,000	1.25	1.43	11/10/16	10/31/21	53,522	7,268	-	60,790
U.S. Treasuries	912828U65	US TSY NT	100,000,000	1.75	1.90	12/13/16	11/30/21	149,038	11,755	-	160,794
U.S. Treasuries	912828XW5	US TREASURY	25,000,000	1.75	1.77	8/15/17	6/30/22	37,465	391	-	37,857
Subtotals			\$ 1,125,000,000					\$ 740,283	\$ 753,689	\$ -	\$ 1,493,973
Federal Agencies	3132X0JL6	FARMER MAC	\$ -	0.88	0.88	9/1/16	3/1/18	\$ -	\$ -	\$ -	\$ -
Federal Agencies	313385TT3	FED HOME LN DISCOUNT NT	-	0.00	1.32	2/15/18	3/2/18	-	733	-	733
Federal Agencies	313313TY4	FED FARM CRD DISCOUNT NT	-	0.00	1.08	4/18/17	3/7/18	4,458	-	-	4,458
Federal Agencies	313313TY4	FED FARM CRD DISCOUNT NT	-	0.00	1.08	4/18/17	3/7/18	4,458	-	-	4,458
Federal Agencies	313385UD6	FED HOME LN DISCOUNT NT	-	0.00	1.35	3/9/18	3/12/18	-	4,500	-	4,500
Federal Agencies	313385UE4	FED HOME LN DISCOUNT NT	-	0.00	1.35	3/12/18	3/13/18	-	1,313	-	1,313
Federal Agencies	313385UF1	FED HOME LN DISCOUNT NT	-	0.00	1.35	3/13/18	3/14/18	-	2,063	-	2,063
Federal Agencies	3133EE71	FEDERAL FARM CREDIT BANK	-	1.63	1.82	5/22/15	3/22/18	47,560	152	-	47,712
Federal Agencies	313385UT1	FED HOME LN DISCOUNT NT	-	0.00	1.55	3/23/18	3/26/18	-	7,104	-	7,104
Federal Agencies	3133EFWG8	FEDERAL FARM CREDIT BANK	-	1.78	1.92	1/26/16	3/26/18	30,915	89	-	31,004
Federal Agencies	313385UU8	FED HOME LN DISCOUNT NT	-	0.00	1.60	3/26/18	3/27/18	-	2,222	-	2,222
Federal Agencies	313385UU8	FED HOME LN DISCOUNT NT	-	0.00	1.60	3/26/18	3/27/18	-	2,222	-	2,222
Federal Agencies	313385UU8	FED HOME LN DISCOUNT NT	-	0.00	1.60	3/26/18	3/27/18	-	2,222	-	2,222
Federal Agencies	313385UU8	FED HOME LN DISCOUNT NT	-	0.00	1.60	3/26/18	3/27/18	-	1,333	-	1,333
Federal Agencies	313385UV6	FED HOME LN DISCOUNT NT	-	0.00	1.60	3/27/18	3/28/18	-	2,222	-	2,222
Federal Agencies	313385UV6	FED HOME LN DISCOUNT NT	-	0.00	1.60	3/27/18	3/28/18	-	2,222	-	2,222
Federal Agencies	313385UW4	FED HOME LN DISCOUNT NT	-	0.00	1.60	3/28/18	3/29/18	-	4,444	-	4,444
Federal Agencies	3137EAEA3	FREDDIE MAC	25,000,000	0.75	0.94	2/8/17	4/9/18	15,625	4,030	-	19,655
Federal Agencies	313385VM5	FED HOME LN DISCOUNT NT	25,000,000	0.00	1.42	1/23/18	4/13/18	-	30,569	-	30,569
Federal Agencies	3133EEZC7	FEDERAL FARM CREDIT BANK	50,000,000	1.84	2.01	4/16/15	4/16/18	74,936	214	-	75,151
Federal Agencies	3132X0SB8	FARMER MAC	10,000,000	1.25	1.28	8/10/17	4/19/18	10,417	246	-	10,663
Federal Agencies	3132X0SB8	FARMER MAC	50,000,000	1.25	1.25	4/19/17	4/19/18	52,083	-	-	52,083
Federal Agencies	31331KJB7	FEDERAL FARM CREDIT BANK	14,230,000	3.00	0.94	2/2/16	4/25/18	35,575	(24,639)	-	10,936
Federal Agencies	3135G0WJ8	FANNIE MAE	25,000,000	0.88	1.05	5/23/13	5/21/18	18,229	3,629	-	21,858
Federal Agencies	3130A8VL4	FEDERAL HOME LOAN BANK	10,000,000	1.00	1.00	8/24/16	5/24/18	8,333	-	-	8,333
Federal Agencies	3130A8VL4	FEDERAL HOME LOAN BANK	25,000,000	1.00	1.00	8/24/16	5/24/18	20,833	-	-	20,833
Federal Agencies	3134G9HC4	FREDDIE MAC	10,000,000	1.00	1.03	5/25/16	5/25/18	8,333	212	-	8,546

Monthly Investment Earnings

Pooled Fund

Type of Investment	CUSIP	Issuer Name	Par Value	Coupon	YTM ¹	Settle Date	Maturity		Earned Interest	Amort.	Realized	Earned Income
							Date	Expense		Gain/(Loss)	/Net Earnings	
Federal Agencies	313385XL5	FED HOME LN DISCOUNT NT	50,000,000	0.00	1.25	5/30/17	5/30/18	52,958	-	-	52,958	
Federal Agencies	3133EFCT2	FEDERAL FARM CREDIT BANK	25,000,000	1.77	1.77	9/8/15	6/8/18	37,383	-	-	37,383	
Federal Agencies	3133EFCT2	FEDERAL FARM CREDIT BANK	50,000,000	1.77	1.77	9/8/15	6/8/18	74,766	-	-	74,766	
Federal Agencies	3133EEW48	FEDERAL FARM CREDIT BANK	50,000,000	1.78	1.82	6/11/15	6/11/18	74,630	113	-	74,743	
Federal Agencies	3133EFSH1	FEDERAL FARM CREDIT BANK	25,000,000	1.17	1.25	12/18/15	6/14/18	24,375	1,628	-	26,003	
Federal Agencies	3133EGGC3	FEDERAL FARM CREDIT BANK	25,000,000	1.94	1.94	6/20/16	6/20/18	38,796	-	-	38,796	
Federal Agencies	3134G9UY1	FREDDIE MAC	25,000,000	1.00	1.00	6/29/16	6/29/18	20,833	-	-	20,833	
Federal Agencies	3134G9UY1	FREDDIE MAC	25,000,000	1.00	1.00	6/29/16	6/29/18	20,833	-	-	20,833	
Federal Agencies	3133EGBQ7	FEDERAL FARM CREDIT BANK	25,000,000	1.94	1.94	5/19/16	7/19/18	38,998	-	-	38,998	
Federal Agencies	3133EGBQ7	FEDERAL FARM CREDIT BANK	25,000,000	1.94	1.94	5/19/16	7/19/18	38,998	-	-	38,998	
Federal Agencies	3130A8U50	FEDERAL HOME LOAN BANK	22,250,000	0.83	0.89	7/29/16	7/25/18	15,390	1,144	-	16,533	
Federal Agencies	3134G9Q67	FREDDIE MAC	25,000,000	1.05	1.05	7/27/16	7/27/18	21,875	-	-	21,875	
Federal Agencies	3134G9Q67	FREDDIE MAC	25,000,000	1.05	1.06	7/27/16	7/27/18	21,875	265	-	22,140	
Federal Agencies	3133EGFQ3	FEDERAL FARM CREDIT BANK	25,000,000	0.88	0.91	9/21/16	9/14/18	18,229	815	-	19,044	
Federal Agencies	3130A9C90	FEDERAL HOME LOAN BANK	25,000,000	1.05	1.05	9/28/16	9/28/18	21,875	-	-	21,875	
Federal Agencies	3133EGFK6	FEDERAL FARM CREDIT BANK	25,000,000	1.94	1.94	6/17/16	10/17/18	39,301	-	-	39,301	
Federal Agencies	3133EGFK6	FEDERAL FARM CREDIT BANK	25,000,000	1.94	1.94	6/17/16	10/17/18	39,301	-	-	39,301	
Federal Agencies	313376BR5	FEDERAL HOME LOAN BANK	2,770,000	1.75	1.57	11/8/17	12/14/18	4,040	(413)	-	3,627	
Federal Agencies	313376BR5	FEDERAL HOME LOAN BANK	15,000,000	1.75	1.31	12/20/16	12/14/18	21,875	(5,453)	-	16,422	
Federal Agencies	313376BR5	FEDERAL HOME LOAN BANK	25,000,000	1.75	1.33	8/23/17	12/14/18	36,458	(8,836)	-	27,622	
Federal Agencies	3135G0G72	FANNIE MAE	3,775,000	1.13	1.57	11/8/17	12/14/18	3,539	1,419	-	4,958	
Federal Agencies	3133EGDM4	FEDERAL FARM CREDIT BANK	25,000,000	1.83	1.83	6/2/16	1/2/19	39,335	-	-	39,335	
Federal Agencies	3133EG2V6	FEDERAL FARM CREDIT BANK	25,000,000	1.74	1.74	1/3/17	1/3/19	37,228	-	-	37,228	
Federal Agencies	3134GAH23	FREDDIE MAC	25,000,000	1.50	1.50	1/17/17	1/17/19	31,250	-	-	31,250	
Federal Agencies	3130A8VZ3	FEDERAL HOME LOAN BANK	25,000,000	1.05	1.05	7/28/16	1/25/19	21,875	-	-	21,875	
Federal Agencies	3132X0EK3	FARMER MAC	25,000,000	1.85	1.85	1/25/16	1/25/19	39,723	-	-	39,723	
Federal Agencies	3134GAS39	FREDDIE MAC	25,000,000	1.50	1.50	2/1/17	2/1/19	31,250	-	-	31,250	
Federal Agencies	3133EGBU8	FEDERAL FARM CREDIT BANK	50,000,000	2.05	2.05	5/25/16	2/25/19	79,753	-	-	79,753	
Federal Agencies	3132X0ED9	FARMER MAC	40,000,000	2.25	2.25	1/19/16	3/19/19	66,130	-	-	66,130	
Federal Agencies	3133EJHG7	FEDERAL FARM CREDIT BANK	25,000,000	2.13	2.16	3/22/18	3/22/19	13,313	190	-	13,503	
Federal Agencies	3133EJHG7	FEDERAL FARM CREDIT BANK	25,000,000	2.13	2.16	3/22/18	3/22/19	13,313	190	-	13,503	
Federal Agencies	3134GBFR8	FREDDIE MAC	25,000,000	1.40	1.40	4/5/17	4/5/19	29,167	-	-	29,167	
Federal Agencies	3133EGAV7	FEDERAL FARM CREDIT BANK	50,350,000	1.17	1.85	12/5/17	5/17/19	49,091	28,675	-	77,766	
Federal Agencies	3136G3QP3	FANNIE MAE	10,000,000	1.25	1.25	5/24/16	5/24/19	10,417	-	-	10,417	
Federal Agencies	3130ABF92	FEDERAL HOME LOAN BANK	30,000,000	1.38	1.47	5/12/17	5/28/19	34,375	2,356	-	36,731	
Federal Agencies	3133EHLG6	FEDERAL FARM CREDIT BANK	27,000,000	1.32	1.35	5/30/17	5/30/19	29,700	688	-	30,388	
Federal Agencies	3133EHMR1	FEDERAL FARM CREDIT BANK	50,000,000	1.38	1.38	6/12/17	6/12/19	57,292	-	-	57,292	
Federal Agencies	313379EE5	FEDERAL HOME LOAN BANK	25,000,000	1.63	1.41	6/9/17	6/14/19	33,854	(4,460)	-	29,394	
Federal Agencies	313379EE5	FEDERAL HOME LOAN BANK	25,000,000	1.63	1.38	8/23/17	6/14/19	33,854	(5,108)	-	28,746	
Federal Agencies	313379EE5	FEDERAL HOME LOAN BANK	35,750,000	1.63	1.43	8/9/17	6/14/19	48,411	(5,788)	-	42,623	
Federal Agencies	3134G9QW0	FREDDIE MAC	50,000,000	1.28	1.28	6/14/16	6/14/19	53,333	-	-	53,333	
Federal Agencies	3130AC7C2	FEDERAL HOME LOAN BANK	15,000,000	1.40	1.38	8/23/17	7/11/19	17,500	(244)	-	17,256	
Federal Agencies	3134G9YR2	FREDDIE MAC	50,000,000	1.50	1.50	7/12/16	7/12/19	62,500	-	-	62,500	
Federal Agencies	3133EGED3	FEDERAL FARM CREDIT BANK	25,000,000	1.90	1.90	6/9/16	8/9/19	40,196	-	-	40,196	
Federal Agencies	3133EGED3	FEDERAL FARM CREDIT BANK	25,000,000	1.90	1.90	6/9/16	8/9/19	40,196	-	-	40,196	
Federal Agencies	3134G94F1	FREDDIE MAC	25,000,000	1.25	1.25	8/15/16	8/15/19	26,042	-	-	26,042	
Federal Agencies	3133EGX67	FEDERAL FARM CREDIT BANK	50,000,000	1.94	1.94	12/20/16	8/20/19	77,592	-	-	77,592	
Federal Agencies	3135G0P23	FANNIE MAE	20,000,000	1.25	1.25	8/30/16	8/23/19	20,833	-	-	20,833	
Federal Agencies	3136G3X59	FANNIE MAE	25,000,000	1.10	1.10	8/23/16	8/23/19	22,917	-	-	22,917	
Federal Agencies	3134G9GS0	FREDDIE MAC	25,000,000	1.25	1.25	5/26/16	8/26/19	26,042	-	-	26,042	
Federal Agencies	3134GAFY5	FREDDIE MAC	8,450,000	1.30	1.82	11/28/17	8/28/19	9,154	3,654	-	12,808	
Federal Agencies	3134GAHR8	FREDDIE MAC	25,000,000	1.50	1.50	9/23/16	9/23/19	29,340	-	-	29,340	
Federal Agencies	3135G0Q30	FANNIE MAE	50,000,000	1.18	1.18	10/21/16	9/27/19	49,167	-	-	49,167	
Federal Agencies	3132X0KH3	FARMER MAC	50,000,000	1.70	1.70	10/6/16	10/11/19	73,395	-	-	73,395	

Monthly Investment Earnings

Pooled Fund

Type of Investment	CUSIP	Issuer Name	Par Value	Coupon	YTM ¹	Settle Date	Maturity		Earned Interest	Amort.	Realized	Earned Income
							Date	Date		Expense	Gain/(Loss)	/Net Earnings
Federal Agencies	3133EGXK6	FEDERAL FARM CREDIT BANK	20,000,000	1.12	1.86	12/1/17	10/11/19	18,667	12,236	-	-	30,902
Federal Agencies	3134G8TG4	FREDDIE MAC	15,000,000	1.50	1.50	4/11/16	10/11/19	18,750	-	-	-	18,750
Federal Agencies	3130ACM92	FEDERAL HOME LOAN BANK	21,500,000	1.50	1.59	10/13/17	10/21/19	26,875	1,599	-	-	28,474
Federal Agencies	3136G0T68	FANNIE MAE	14,000,000	1.33	1.44	8/28/17	10/24/19	15,517	1,252	-	-	16,768
Federal Agencies	3134GBHT2	FREDDIE MAC	50,000,000	1.63	1.60	9/12/17	10/25/19	67,708	(983)	-	-	66,726
Federal Agencies	3136G4FJ7	FANNIE MAE	25,000,000	1.20	1.20	10/25/16	10/25/19	25,000	-	-	-	25,000
Federal Agencies	3136G4EZ2	FANNIE MAE	50,000,000	1.13	1.16	10/28/16	10/30/19	46,875	1,413	-	-	48,288
Federal Agencies	3134GAVL5	FREDDIE MAC	100,000,000	1.17	1.17	11/4/16	11/4/19	97,500	-	-	-	97,500
Federal Agencies	3136G3LV5	FANNIE MAE	8,950,000	1.35	1.35	5/26/16	11/26/19	10,069	-	-	-	10,069
Federal Agencies	3133EGN43	FEDERAL FARM CREDIT BANK	50,000,000	1.83	1.83	12/2/16	12/2/19	78,669	-	-	-	78,669
Federal Agencies	3130A0JR2	FEDERAL HOME LOAN BANK	11,360,000	2.38	1.90	12/15/17	12/13/19	22,483	(4,466)	-	-	18,017
Federal Agencies	3130A0JR2	FEDERAL HOME LOAN BANK	20,000,000	2.38	1.90	12/12/17	12/13/19	39,583	(7,893)	-	-	31,690
Federal Agencies	3130A0JR2	FEDERAL HOME LOAN BANK	40,000,000	2.38	1.90	12/15/17	12/13/19	79,167	(15,721)	-	-	63,445
Federal Agencies	3132X0PG0	FARMER MAC	50,000,000	1.76	1.76	2/10/17	1/3/20	75,318	-	-	-	75,318
Federal Agencies	3134G9VR5	FREDDIE MAC	25,000,000	1.38	1.38	7/6/16	1/6/20	28,646	-	-	-	28,646
Federal Agencies	3136G4KQ5	FANNIE MAE	1,000,000	1.65	1.84	11/17/17	1/17/20	1,375	154	-	-	1,529
Federal Agencies	3136G4KQ5	FANNIE MAE	31,295,000	1.65	1.84	11/17/17	1/17/20	43,031	4,820	-	-	47,851
Federal Agencies	3130ADN32	FEDERAL HOME LOAN BANK	50,000,000	2.13	2.22	2/9/18	2/11/20	88,542	3,875	-	-	92,417
Federal Agencies	313378J77	FEDERAL HOME LOAN BANK	15,710,000	1.88	1.56	5/17/17	3/13/20	24,547	(4,025)	-	-	20,522
Federal Agencies	3133EHZN6	FEDERAL FARM CREDIT BANK	20,000,000	1.45	1.49	9/20/17	3/20/20	24,167	700	-	-	24,867
Federal Agencies	3133EJHL6	FEDERAL FARM CREDIT BANK	50,000,000	2.38	2.41	3/27/18	3/27/20	13,194	246	-	-	13,441
Federal Agencies	3136G3TK1	FANNIE MAE	25,000,000	1.50	1.50	7/6/16	4/6/20	31,250	-	-	-	31,250
Federal Agencies	3136G4BL6	FANNIE MAE	15,000,000	1.25	1.25	10/17/16	4/17/20	15,625	-	-	-	15,625
Federal Agencies	3134GBLY6	FREDDIE MAC	25,000,000	1.50	1.50	5/8/17	5/8/20	31,250	-	-	-	31,250
Federal Agencies	3134GBPB2	FREDDIE MAC	15,750,000	1.70	1.70	5/30/17	5/22/20	22,313	-	-	-	22,313
Federal Agencies	3133EHNK5	FEDERAL FARM CREDIT BANK	25,000,000	1.54	1.54	6/15/17	6/15/20	32,083	71	-	-	32,154
Federal Agencies	3133EHNK5	FEDERAL FARM CREDIT BANK	26,900,000	1.54	1.55	6/15/17	6/15/20	34,522	152	-	-	34,674
Federal Agencies	3134GBST0	FREDDIE MAC	14,675,000	1.65	1.65	6/22/17	6/22/20	20,178	-	-	-	20,178
Federal Agencies	3134GBTX0	FREDDIE MAC	50,000,000	1.75	1.76	6/29/17	6/29/20	72,917	283	-	-	73,200
Federal Agencies	3136G3TG0	FANNIE MAE	15,000,000	1.15	1.15	6/30/16	6/30/20	14,375	-	-	-	14,375
Federal Agencies	3134GB5M0	FREDDIE MAC	50,000,000	1.96	1.96	12/1/17	7/1/20	81,667	-	-	-	81,667
Federal Agencies	3133EHQB2	FEDERAL FARM CREDIT BANK	25,000,000	1.55	1.56	7/6/17	7/6/20	32,292	284	-	-	32,576
Federal Agencies	3130ABNV4	FEDERAL HOME LOAN BANK	50,000,000	1.75	1.75	7/13/17	7/13/20	72,917	-	-	-	72,917
Federal Agencies	3134GBXV9	FREDDIE MAC	50,000,000	1.85	1.85	7/13/17	7/13/20	77,083	-	-	-	77,083
Federal Agencies	3135G0T60	FANNIE MAE	50,000,000	1.50	1.60	8/1/17	7/30/20	62,500	4,293	-	-	66,793
Federal Agencies	3130ABZE9	FEDERAL HOME LOAN BANK	6,700,000	1.65	1.65	8/28/17	8/28/20	9,213	19	-	-	9,231
Federal Agencies	3130ABZN9	FEDERAL HOME LOAN BANK	25,000,000	1.80	1.80	8/28/17	8/28/20	37,500	-	-	-	37,500
Federal Agencies	3130ABZN9	FEDERAL HOME LOAN BANK	50,000,000	1.80	1.80	8/28/17	8/28/20	75,000	-	-	-	75,000
Federal Agencies	3130ADT93	FEDERAL HOME LOAN BANK	25,000,000	2.40	2.43	3/14/18	9/14/20	28,333	306	-	-	28,639
Federal Agencies	3130ACE26	FEDERAL HOME LOAN BANK	18,000,000	1.38	1.48	9/8/17	9/28/20	20,625	1,605	-	-	22,230
Federal Agencies	3130ACE26	FEDERAL HOME LOAN BANK	30,000,000	1.38	1.48	9/8/17	9/28/20	34,375	2,675	-	-	37,050
Federal Agencies	3130ACK52	FEDERAL HOME LOAN BANK	25,530,000	1.70	2.48	3/12/18	10/5/20	22,906	10,552	-	-	33,458
Federal Agencies	3132X0KR1	FARMER MAC	25,000,000	1.87	1.87	11/2/16	11/2/20	40,196	-	-	-	40,196
Federal Agencies	3132X0ZF1	FARMER MAC	12,000,000	1.93	2.02	11/13/17	11/9/20	19,300	852	-	-	20,152
Federal Agencies	3137EAEK1	FREDDIE MAC	50,000,000	1.88	1.91	11/15/17	11/17/20	78,125	1,355	-	-	79,480
Federal Agencies	3134GBX56	FREDDIE MAC	60,000,000	2.25	2.12	11/24/17	11/24/20	112,500	(6,313)	-	-	106,187
Federal Agencies	3134GBLR1	FREDDIE MAC	24,715,000	1.75	1.75	5/25/17	11/25/20	36,043	60	-	-	36,103
Federal Agencies	3133EHW58	FEDERAL FARM CREDIT BANK	25,000,000	1.90	1.91	11/27/17	11/27/20	39,583	208	-	-	39,792
Federal Agencies	3133EHW58	FEDERAL FARM CREDIT BANK	25,000,000	1.90	1.91	11/27/17	11/27/20	39,583	208	-	-	39,792
Federal Agencies	3130A3UQ5	FEDERAL HOME LOAN BANK	10,000,000	1.88	2.02	12/13/17	12/11/20	15,625	1,201	-	-	16,826
Federal Agencies	3132X0ZY0	FARMER MAC	12,750,000	2.05	2.07	12/15/17	12/15/20	21,781	242	-	-	22,023
Federal Agencies	3133EGX75	FEDERAL FARM CREDIT BANK	50,000,000	2.03	2.03	12/21/16	12/21/20	80,625	-	-	-	80,625
Federal Agencies	3133EFTX5	FEDERAL FARM CREDIT BANK	100,000,000	2.20	2.20	12/24/15	12/24/20	173,550	-	-	-	173,550
Federal Agencies	3133EG4T9	FEDERAL FARM CREDIT BANK	20,000,000	2.03	2.03	1/25/17	1/25/21	31,643	-	-	-	31,643

Monthly Investment Earnings

Pooled Fund

Type of Investment	CUSIP	Issuer Name	Par Value	Coupon	YTM ¹	Settle Date	Maturity		Amort. Expense	Realized Gain/(Loss)	Earned Income /Net Earnings
							Date	Date			
Federal Agencies	3133EG4T9	FEDERAL FARM CREDIT BANK	20,000,000	2.03	2.03	1/25/17	1/25/21	31,643	-	-	31,643
Federal Agencies	3130AC2K9	FEDERAL HOME LOAN BANK	50,200,000	1.87	1.88	9/20/17	2/10/21	78,228	251	-	78,480
Federal Agencies	3137EAEL9	FREDDIE MAC	22,000,000	2.38	2.47	2/16/18	2/16/21	43,542	1,643	-	45,184
Federal Agencies	3134GBD58	FREDDIE MAC	5,570,000	1.80	1.80	8/30/17	2/26/21	8,355	14	-	8,369
Federal Agencies	3130AAYP7	FEDERAL HOME LOAN BANK	8,585,000	2.20	2.17	8/11/17	3/22/21	15,739	(196)	-	15,543
Federal Agencies	3132X0Q53	FARMER MAC	6,350,000	2.60	2.64	3/29/18	3/29/21	917	19	-	936
Federal Agencies	3132X0Q53	FARMER MAC	20,450,000	2.60	2.64	3/29/18	3/29/21	2,954	61	-	3,015
Federal Agencies	3134GBJP8	FREDDIE MAC	22,000,000	1.89	2.06	11/16/17	5/3/21	34,650	3,075	-	37,725
Federal Agencies	3130ACVS0	FEDERAL HOME LOAN BANK	50,000,000	2.13	2.13	11/30/17	6/15/21	88,750	-	-	88,750
Federal Agencies	3130ACVS0	FEDERAL HOME LOAN BANK	50,000,000	2.13	2.13	11/30/17	6/15/21	88,750	-	-	88,750
Federal Agencies	3134GBJ60	FREDDIE MAC	50,000,000	1.90	1.90	9/29/17	6/29/21	79,167	-	-	79,167
Federal Agencies	3134G9H26	FREDDIE MAC	1,219,000	1.50	1.92	1/29/18	6/30/21	1,524	424	-	1,948
Federal Agencies	3134G9H26	FREDDIE MAC	3,917,000	1.50	1.86	1/25/18	6/30/21	4,896	1,164	-	6,060
Federal Agencies	3130ACQ98	FEDERAL HOME LOAN BANK	100,000,000	2.08	2.08	11/1/17	7/1/21	173,333	-	-	173,333
Federal Agencies	3134GBM25	FREDDIE MAC	50,000,000	1.92	1.92	10/2/17	7/1/21	80,000	-	-	80,000
Federal Agencies	3130ACF33	FEDERAL HOME LOAN BANK	25,000,000	1.88	1.95	9/18/17	9/13/21	39,063	1,544	-	40,606
Federal Agencies	3135G0Q89	FANNIE MAE	25,000,000	1.38	1.38	10/21/16	10/7/21	28,646	-	-	28,646
Federal Agencies	3133EGZJ7	FEDERAL FARM CREDIT BANK	14,500,000	1.38	1.38	10/25/16	10/25/21	16,615	-	-	16,615
Federal Agencies	3133EGZJ7	FEDERAL FARM CREDIT BANK	15,000,000	1.38	1.38	10/25/16	10/25/21	17,188	-	-	17,188
Federal Agencies	3133EGS97	FEDERAL FARM CREDIT BANK	25,000,000	1.98	1.98	12/8/16	12/8/21	42,011	-	-	42,011
Federal Agencies	3133EGS97	FEDERAL FARM CREDIT BANK	25,000,000	1.98	1.98	12/8/16	12/8/21	42,011	-	-	42,011
Federal Agencies	3130ACB60	FEDERAL HOME LOAN BANK	50,000,000	2.00	2.00	9/8/17	12/15/21	83,333	-	-	83,333
Federal Agencies	3135G0T45	FANNIE MAE	25,000,000	1.88	1.81	6/6/17	4/5/22	39,063	(1,270)	-	37,793
Federal Agencies	3134GBQG0	FREDDIE MAC	50,000,000	2.18	2.18	5/25/17	5/25/22	90,833	-	-	90,833
Federal Agencies	3133EHL7	FEDERAL FARM CREDIT BANK	50,000,000	1.88	1.85	6/6/17	6/2/22	78,125	(1,008)	-	77,117
Federal Agencies	3133EHL7	FEDERAL FARM CREDIT BANK	50,000,000	1.88	1.88	6/9/17	6/2/22	78,125	43	-	78,168
Federal Agencies	3134GBF72	FREDDIE MAC	50,000,000	2.01	2.01	9/15/17	6/15/22	83,750	-	-	83,750
Federal Agencies	3134GBN73	FREDDIE MAC	50,000,000	2.07	2.07	10/2/17	7/1/22	86,250	-	-	86,250
Federal Agencies	3134GBW99	FREDDIE MAC	100,000,000	2.24	2.24	11/1/17	7/1/22	186,667	-	-	186,667
Federal Agencies	3134GBXU1	FREDDIE MAC	31,575,000	2.25	2.25	7/27/17	7/27/22	59,203	-	-	59,203
Federal Agencies	3130AC7E8	FEDERAL HOME LOAN BANK	50,000,000	2.17	2.17	9/1/17	9/1/22	90,417	-	-	90,417
Subtotals			\$ 4,596,776,000					\$ 6,402,526	\$ 74,963	\$ -	\$ 6,477,489
State/Local Agencies	91412GL52	UNIV OF CALIFORNIA CA REVENUES	\$ 2,470,000	0.99	0.99	6/30/16	5/15/18	\$ 2,044	\$ -	\$ -	\$ 2,044
State/Local Agencies	546456CY8	LOUISIANA ST CITIZENS PROPERTY	4,500,000	6.13	1.30	11/30/16	6/1/18	22,969	(18,219)	-	4,750
State/Local Agencies	603786GJ7	MINNEAPOLIS MN REVENUE	1,000,000	4.88	1.40	12/1/16	8/1/18	4,063	(2,908)	-	1,155
State/Local Agencies	13063C4V9	CALIFORNIA ST	50,000,000	1.05	0.90	11/3/16	11/1/18	43,750	(6,281)	-	37,469
State/Local Agencies	13063DAB4	CALIFORNIA ST	23,000,000	1.59	1.59	4/27/17	4/1/19	30,533	-	-	30,533
State/Local Agencies	13063CKL3	CALIFORNIA ST	4,750,000	2.25	1.15	10/27/16	5/1/19	8,906	(4,368)	-	4,539
State/Local Agencies	91412GL60	UNIV OF CALIFORNIA CA REVENUES	2,000,000	1.23	1.23	6/30/16	5/15/19	2,047	-	-	2,047
State/Local Agencies	91412GSB2	UNIV OF CALIFORNIA CA REVENUES	4,180,000	1.80	1.57	10/5/15	7/1/19	6,256	(782)	-	5,474
State/Local Agencies	91412GSB2	UNIV OF CALIFORNIA CA REVENUES	16,325,000	1.80	1.56	10/2/15	7/1/19	24,433	(3,096)	-	21,337
State/Local Agencies	6055804W6	MISSISSIPPI ST	8,500,000	6.09	1.38	4/23/15	10/1/19	43,130	(32,825)	-	10,305
State/Local Agencies	977100CW4	WISCONSIN ST GEN FUND ANNUAL A	18,000,000	1.45	1.45	8/16/16	5/1/20	21,690	-	-	21,690
State/Local Agencies	13066YTY5	CALIFORNIA ST DEPT OF WTR RESO	29,139,823	1.71	2.13	2/6/17	5/1/21	41,597	9,893	-	51,490
State/Local Agencies	91412GF59	UNIV OF CALIFORNIA CA REVENUES	1,769,000	1.91	1.40	8/9/16	5/15/21	2,816	(743)	-	2,073
Subtotals			\$ 165,633,823					\$ 254,233	\$ (59,329)	\$ -	\$ 194,904

Monthly Investment Earnings

Pooled Fund

Type of Investment	CUSIP	Issuer Name	Par Value	Coupon	YTM ¹	Settle Date	Maturity		Earned Interest	Amort.	Realized	Earned Income
							Date	Expense		Gain/(Loss)	/Net Earnings	
Public Time Deposits	PP9F2HFF8	TRANS-PAC NATIONAL BK	\$ -	1.47	1.47	3/21/17	3/21/18	\$ 193	\$ -	\$ -	\$ 193	
Public Time Deposits	PP302GIL3	BANK OF SAN FRANCISCO	240,000	1.37	1.37	4/11/17	4/11/18	283	-	-	283	
Public Time Deposits	PPA01U877	PREFERRED BANK LA CALIF	240,000	1.44	1.44	5/16/17	5/16/18	294	-	-	294	
Public Time Deposits	PPA30X603	SAN FRANCISCO CREDIT UNION	9,500,000	1.58	1.58	3/5/18	6/5/18	11,103	-	-	11,103	
Public Time Deposits	PPQD16IX7	BRIDGE BANK	10,000,000	1.73	1.73	3/27/18	6/25/18	2,370	-	-	2,370	
Public Time Deposits	PPF00EG70	BANK OF SAN FRANCISCO	5,000,000	1.91	1.91	3/16/18	9/12/18	4,244	-	-	4,244	
Subtotals			\$ 24,980,000					\$ 18,488	\$ -	\$ -	\$ 18,488	
Negotiable CDs	78009NW36	ROYAL BANK OF CANADA NY	\$ -	1.84	1.84	7/5/17	4/5/18	\$ 68,265	\$ -	\$ 500	\$ 68,765	
Negotiable CDs	78009N5U6	ROYAL BANK OF CANADA NY	50,000,000	1.78	1.78	12/22/17	4/24/18	76,639	-	-	76,639	
Negotiable CDs	78009NT63	ROYAL BANK OF CANADA NY	50,000,000	1.47	1.47	5/10/17	5/10/18	63,292	-	-	63,292	
Negotiable CDs	06417GZN1	BANK OF NOVA SCOTIA HOUSTON	50,000,000	1.54	1.54	10/16/17	5/14/18	66,306	-	-	66,306	
Negotiable CDs	06417GXY9	BANK OF NOVA SCOTIA HOUSTON	35,000,000	1.48	1.48	8/30/17	5/25/18	44,606	-	-	44,606	
Negotiable CDs	89113W2C9	TORONTO DOMINION BANK NY	50,000,000	1.46	1.46	6/2/17	6/4/18	62,861	-	-	62,861	
Negotiable CDs	78009NU46	ROYAL BANK OF CANADA NY	50,000,000	2.20	2.20	6/12/17	6/12/18	86,798	-	-	86,798	
Negotiable CDs	89113XBB9	TORONTO DOMINION BANK NY	50,000,000	1.50	1.50	8/10/17	6/15/18	64,583	-	-	64,583	
Negotiable CDs	89113XBV5	TORONTO DOMINION BANK NY	50,000,000	1.50	1.50	8/16/17	6/15/18	64,583	-	-	64,583	
Negotiable CDs	06371EDT1	BANK OF MONTREAL CHICAGO	50,000,000	1.87	1.87	7/6/17	7/2/18	80,391	-	-	80,391	
Negotiable CDs	06371EMD6	BANK OF MONTREAL CHICAGO	50,000,000	1.50	1.50	9/1/17	7/2/18	64,583	-	-	64,583	
Negotiable CDs	06371EQT7	BANK OF MONTREAL CHICAGO	50,000,000	1.86	1.86	10/4/17	7/2/18	79,961	-	-	79,961	
Negotiable CDs	06371EXP7	BANK OF MONTREAL CHICAGO	50,000,000	1.75	1.75	12/8/17	7/2/18	75,347	-	-	75,347	
Negotiable CDs	78009N6F8	ROYAL BANK OF CANADA NY	50,000,000	1.82	1.82	1/4/18	7/2/18	78,361	-	-	78,361	
Negotiable CDs	89113W5H5	TORONTO DOMINION BANK NY	50,000,000	1.55	1.55	7/6/17	7/2/18	66,736	-	-	66,736	
Negotiable CDs	89113XAT1	TORONTO DOMINION BANK NY	50,000,000	1.48	1.48	8/8/17	7/2/18	63,722	-	-	63,722	
Negotiable CDs	96121T3R7	WESTPAC BANKING CORP NY	50,000,000	1.82	1.82	7/7/17	7/2/18	78,239	-	-	78,239	
Negotiable CDs	06371E2G1	BANK OF MONTREAL CHICAGO	25,000,000	2.25	2.25	3/29/18	7/9/18	4,688	-	-	4,688	
Negotiable CDs	78009NX50	ROYAL BANK OF CANADA NY	50,000,000	2.07	2.07	7/24/17	7/24/18	80,481	-	-	80,481	
Negotiable CDs	96121T3W6	WESTPAC BANKING CORP NY	50,000,000	2.02	2.02	7/26/17	7/26/18	78,328	-	-	78,328	
Negotiable CDs	96121T4D7	WESTPAC BANKING CORP NY	50,000,000	1.53	1.53	8/9/17	8/9/18	65,875	-	-	65,875	
Negotiable CDs	89113XWK6	TORONTO DOMINION BANK NY	50,000,000	2.00	2.00	2/5/18	8/31/18	86,111	-	-	86,111	
Negotiable CDs	06371EN60	BANK OF MONTREAL CHICAGO	25,000,000	2.05	2.05	2/9/18	9/6/18	44,132	-	-	44,132	
Negotiable CDs	06417GK72	BANK OF NOVA SCOTIA HOUSTON	50,000,000	2.09	2.09	2/14/18	9/17/18	89,986	-	-	89,986	
Negotiable CDs	65602UP85	NORINCHUKIN BANK (NY)	50,000,000	2.28	2.28	3/29/18	9/28/18	9,487	-	-	9,487	
Negotiable CDs	06371EQJ9	BANK OF MONTREAL CHICAGO	50,000,000	1.88	1.88	10/3/17	10/1/18	81,124	-	-	81,124	
Negotiable CDs	96121T4S4	WESTPAC BANKING CORP NY	50,000,000	1.97	1.97	10/11/17	10/15/18	80,996	-	-	80,996	
Negotiable CDs	06371ERP4	BANK OF MONTREAL CHICAGO	45,000,000	2.08	2.08	10/16/17	10/25/18	72,821	-	-	72,821	
Negotiable CDs	06417GZR2	BANK OF NOVA SCOTIA HOUSTON	50,000,000	2.07	2.07	10/25/17	10/25/18	80,481	-	-	80,481	

Monthly Investment Earnings

Pooled Fund

Type of Investment	CUSIP	Issuer Name	Par Value	Coupon	YTM ¹	Settle Date	Maturity		Earned Interest	Amort.	Realized	Earned Income
							Date	Expense		Gain/(Loss)	/Net Earnings	
Negotiable CDs	89113XJJ4	TORONTO DOMINION BANK NY	50,000,000	2.07	2.07	10/18/17	10/25/18	80,481	-	-	80,481	
Negotiable CDs	06417GZT8	BANK OF NOVA SCOTIA HOUSTON	50,000,000	1.92	1.92	11/2/17	11/9/18	81,038	-	-	81,038	
Negotiable CDs	89113XLP7	TORONTO DOMINION BANK NY	50,000,000	1.91	1.91	11/2/17	11/9/18	80,607	-	-	80,607	
Negotiable CDs	78009N3T1	ROYAL BANK OF CANADA NY	50,000,000	1.83	1.83	11/20/17	11/20/18	78,792	-	-	78,792	
Negotiable CDs	78012UAW5	ROYAL BANK OF CANADA NY	25,000,000	2.18	2.18	2/27/18	11/27/18	42,421	-	-	42,421	
Negotiable CDs	89113XQJ6	TORONTO DOMINION BANK NY	25,000,000	1.92	1.92	12/6/17	12/6/18	40,959	-	-	40,959	
Negotiable CDs	89113XQJ6	TORONTO DOMINION BANK NY	50,000,000	1.92	1.92	12/6/17	12/6/18	81,918	-	-	81,918	
Negotiable CDs	06417GC48	BANK OF NOVA SCOTIA HOUS	50,000,000	1.93	1.93	12/7/17	12/7/18	82,157	-	-	82,157	
Negotiable CDs	78009N5B8	ROYAL BANK OF CANADA NY	50,000,000	1.93	1.93	12/8/17	12/7/18	82,157	-	-	82,157	
Negotiable CDs	96121T5B0	WESTPAC BANKING CORP NY	50,000,000	1.90	1.90	12/7/17	12/7/18	80,865	-	-	80,865	
Negotiable CDs	78009N5M4	ROYAL BANK OF CANADA NY	50,000,000	2.05	2.05	12/19/17	12/19/18	82,825	-	-	82,825	
Negotiable CDs	96121T5K0	WESTPAC BANKING CORP NY	50,000,000	2.07	2.07	12/27/17	12/21/18	82,347	-	-	82,347	
Negotiable CDs	06371EA64	BANK OF MONTREAL CHICAGO	25,000,000	2.05	2.05	12/27/17	12/24/18	44,132	-	-	44,132	
Negotiable CDs	96121T5M6	WESTPAC BANKING CORP NY	50,000,000	2.11	2.11	12/28/17	12/28/18	82,130	-	-	82,130	
Negotiable CDs	06371EFH5	BANK OF MONTREAL CHICAGO	50,000,000	1.96	1.96	7/17/17	1/17/19	84,446	-	-	84,446	
Negotiable CDs	06371EL21	BANK OF MONTREAL CHICAGO	25,000,000	2.11	2.11	1/29/18	1/23/19	41,498	-	-	41,498	
Negotiable CDs	96121T7B8	WESTPAC BANKING CORP NY	50,000,000	2.02	2.02	3/5/18	3/5/19	75,608	-	-	75,608	
Negotiable CDs	06427KSW8	BANK OF MONTREAL CHICAGO	27,838,000	2.33	2.33	3/9/17	3/8/19	52,949	-	-	52,949	
Negotiable CDs	78012UCE3	ROYAL BANK OF CANADA NY	50,000,000	2.36	2.36	3/28/18	4/1/19	13,094	-	-	13,094	
Subtotals			\$ 2,157,838,000					\$ 3,250,206	\$ -	\$ 500	\$ 3,250,706	
Commercial Paper	63873KC13	NATIXIS NY BRANCH	\$ -	0.00	1.35	2/28/18	3/1/18	\$ -	\$ -	\$ -	\$ -	
Commercial Paper	89233HC28	TOYOTA MOTOR CREDIT CORP	-	0.00	1.40	6/7/17	3/2/18	1,931	-	-	1,931	
Commercial Paper	63873KC54	NATIXIS NY BRANCH	-	0.00	1.41	3/2/18	3/5/18	-	7,050	-	7,050	
Commercial Paper	06538CCK5	BANK TOKYO-MIT UFJ NY	-	0.00	1.58	12/11/17	3/19/18	-	54,950	-	54,950	
Commercial Paper	63873KCM7	NATIXIS NY BRANCH	-	0.00	1.45	2/27/18	3/21/18	-	29,000	-	29,000	
Commercial Paper	89233HCP7	TOYOTA MOTOR CREDIT CORP	-	0.00	1.47	6/26/17	3/23/18	44,306	-	-	44,306	
Commercial Paper	19416FCU6	COLGATE-PALMOLIVE CO	-	0.00	1.69	3/27/18	3/28/18	-	939	-	939	
Commercial Paper	63873KCV7	NATIXIS NY BRANCH	-	0.00	1.67	3/27/18	3/29/18	-	4,639	-	4,639	
Commercial Paper	89233HCW2	TOYOTA MOTOR CREDIT CORP	-	0.00	1.53	7/6/17	3/30/18	56,625	-	-	56,625	
Commercial Paper	19416FD27	COLGATE-PALMOLIVE CO	18,000,000	0.00	1.69	3/29/18	4/2/18	-	2,535	-	2,535	
Commercial Paper	89233HD27	TOYOTA MOTOR CREDIT CORP	50,000,000	0.00	1.69	12/15/17	4/2/18	-	72,333	-	72,333	
Commercial Paper	19416FD50	COLGATE-PALMOLIVE CO	60,000,000	0.00	1.72	3/29/18	4/5/18	-	8,600	-	8,600	
Commercial Paper	06538CDQ1	BANK TOKYO-MIT UFJ NY	40,000,000	0.00	1.54	10/18/17	4/24/18	-	52,700	-	52,700	
Commercial Paper	06538CDW8	BANK TOKYO-MIT UFJ NY	50,000,000	0.00	1.76	1/4/18	4/30/18	-	75,347	-	75,347	
Commercial Paper	89233HEE0	TOYOTA MOTOR CREDIT CORPORATI	50,000,000	0.00	1.76	1/22/18	5/14/18	-	75,347	-	75,347	
Commercial Paper	06538CF89	BANK TOKYO-MIT UFJ NY	50,000,000	0.00	1.58	9/12/17	6/8/18	67,167	-	-	67,167	
Commercial Paper	06538CFF3	BANK TOKYO-MIT UFJ NY	50,000,000	0.00	1.58	9/19/17	6/15/18	-	67,167	-	67,167	
Commercial Paper	06538CG21	BANK TOKYO-MIT UFJ NY	45,000,000	0.00	2.33	3/26/18	7/2/18	-	17,400	-	17,400	
Commercial Paper	06538CG21	BANK TOKYO-MIT UFJ NY	50,000,000	0.00	1.85	1/4/18	7/2/18	-	78,792	-	78,792	
Commercial Paper	06538CG21	BANK TOKYO-MIT UFJ NY	50,000,000	0.00	2.11	3/1/18	7/2/18	-	89,986	-	89,986	
Commercial Paper	89233HGP3	TOYOTA MOTOR CREDIT CORP	50,000,000	0.00	2.34	3/28/18	7/23/18	-	12,889	-	12,889	
Commercial Paper	06538CKK6	BANK TOKYO-MIT UFJ NY	25,000,000	0.00	2.08	1/22/18	10/19/18	-	44,132	-	44,132	
Commercial Paper	06538CKK6	BANK TOKYO-MIT UFJ NY	45,000,000	0.00	2.08	1/24/18	10/19/18	-	79,438	-	79,438	
Commercial Paper	06538CKN0	BANK TOKYO-MIT UFJ NY	25,000,000	0.00	2.09	1/25/18	10/22/18	-	44,347	-	44,347	
Commercial Paper	89233HL93	TOYOTA MOTOR CREDIT CORP	50,000,000	0.00	2.24	2/15/18	11/9/18	-	94,722	-	94,722	
Subtotals			\$ 708,000,000					\$ 170,028	\$ 912,313	\$ -	\$ 1,082,341	
Medium Term Notes	89236TDN2	TOYOTA MOTOR CREDIT CORP	\$ 50,000,000	1.96	1.96	1/9/17	1/9/19	\$ 84,558	\$ -	\$ -	\$ 84,558	
Medium Term Notes	89236TEJ0	TOYOTA MOTOR CREDIT CORP	20,000,000	2.20	2.25	1/11/18	1/10/20	36,667	757	-	37,424	
Subtotals			\$ 70,000,000					\$ 121,225	\$ 757	\$ -	\$ 121,982	

Monthly Investment Earnings Pooled Fund

Type of Investment	CUSIP	Issuer Name	Par Value	Coupon	YTM ¹	Settle Date	Maturity		Earned Interest	Amort.	Realized	Earned Income
							Date	Expense		Gain/(Loss)	/Net Earnings	
Money Market Funds	09248U718	BLACKROCK LIQ INST GOV FUND	\$ 50,031,507	1.55	1.55	3/29/18	4/1/18	\$ 8,550	\$ -	\$ -	\$ 8,550	
Money Market Funds	31607A703	FIDELITY INST GOV FUND	245,810,159	1.42	1.42	3/29/18	4/1/18	356,389	-	-	356,389	
Money Market Funds	61747C707	MORGAN STANLEY INST GOVT FUND	100,671,769	1.61	1.61	3/29/18	4/1/18	16,740	-	-	16,740	
Subtotals			\$ 396,513,435					\$ 381,680	\$ -	\$ -	\$ 381,680	
Supranationals	459053TW4	INTL BK RECON & DEVELOP DISCOUN	\$ -	0.00	1.35	3/1/18	3/5/18	\$ -	\$ 10,500	\$ -	\$ 10,500	
Supranationals	459515TW2	INTERNATIONAL FINANCE CORP DISC	-	0.00	1.38	2/20/18	3/5/18	-	3,833	-	3,833	
Supranationals	45950VKP0	INTL FINANCE CORP	-	1.63	1.63	3/6/17	3/6/18	11,339	-	-	11,339	
Supranationals	459053UA0	INTL BK RECON & DEVELOPMENT DIS	-	0.00	1.40	3/2/18	3/9/18	-	13,611	-	13,611	
Supranationals	459053VH4	INTL BK RECON & DEVELOP DISCOUN	50,000,000	0.00	1.60	3/28/18	4/9/18	-	8,889	-	8,889	
Supranationals	4581X0BR8	INTER-AMERICAN DEVEL BK	16,000,000	1.75	1.72	12/28/17	8/24/18	23,333	(332)	-	23,001	
Supranationals	459058ER0	INTL BK RECON & DEVELOP	25,000,000	1.00	1.07	10/7/15	10/5/18	20,833	1,204	-	22,038	
Supranationals	45950VLM6	INTERNATIONAL FINANCE CORP	50,000,000	1.67	1.67	3/1/18	3/1/19	71,864	-	-	71,864	
Supranationals	459058FQ1	INTL BANK RECON & DEVELOPMENT	50,000,000	1.20	1.75	11/6/17	9/30/19	50,000	23,087	-	73,087	
Supranationals	45905UZJ6	INTL BANK RECON & DEVELOPMENT	25,000,000	1.30	1.56	6/2/17	10/25/19	27,083	5,491	-	32,575	
Supranationals	45905UZJ6	INTL BK RECON & DEVELOP	29,300,000	1.30	1.56	6/2/17	10/25/19	31,742	6,436	-	38,178	
Supranationals	459058FZ1	INTL BK RECON & DEVELOP	50,000,000	1.88	1.91	3/21/17	4/21/20	78,125	1,197	-	79,322	
Supranationals	4581X0CX4	INTER-AMERICAN DEVEL BK	25,000,000	1.63	1.72	4/12/17	5/12/20	33,854	1,631	-	35,485	
Supranationals	459058GA5	INTL BK RECON & DEVELOPMENT	50,000,000	1.63	1.63	8/29/17	9/4/20	67,705	295	-	68,001	
Supranationals	45905UQ80	INTL BK RECON & DEVELOP	50,000,000	1.95	1.97	11/9/17	11/9/20	81,250	990	-	82,240	
Supranationals	45905UQ80	INTL BK RECON & DEVELOP	50,000,000	1.95	2.15	12/20/17	11/9/20	81,250	8,272	-	89,522	
Supranationals	45950KCM0	INTERNATIONAL FINANCE CORP	50,000,000	2.25	2.35	1/25/18	1/25/21	93,750	4,158	-	97,908	
Subtotals			\$ 520,300,000					\$ 672,129	\$ 89,262	\$ -	\$ 761,391	
Grand Totals			\$ 9,765,041,258					\$ 12,010,796	\$ 1,771,656	\$ 500	\$ 13,782,952	

¹Yield to maturity is calculated at purchase

Investment Transactions

Pooled Fund

For month ended March 31, 2018

Transaction	Settle	Maturity	Type of Investment	Issuer Name	CUSIP	Par Value	Coupon	YTM	Price	Interest	Transaction
Purchase	3/1/2018	3/5/2018	Supranationals	INTL BK RECON & DEVELOP	459053TW4	\$ 70,000,000	0.00	1.35	\$ 99.99	\$ -	\$ 69,989,500
Purchase	3/1/2018	4/1/2018	Money Market Funds	BLACKROCK LIQ INST GOV F	09248U718	30	1.25	1.25	100.00	-	30
Purchase	3/1/2018	7/2/2018	Commercial Paper	BANK TOKYO-MIT UFJ NY	06538CG21	50,000,000	0.00	2.11	99.29	-	49,642,958
Purchase	3/1/2018	2/28/2019	U.S. Treasuries	TREASURY BILL	912796PT0	50,000,000	0.00	2.06	97.96	-	48,978,778
Purchase	3/1/2018	3/1/2019	Supranationals	INTERNATIONAL FINANCE CO	45950VLM6	50,000,000	1.62	1.62	100.00	-	50,000,000
Purchase	3/2/2018	3/5/2018	Commercial Paper	NATIXIS NY BRANCH	63873KC54	60,000,000	0.00	1.41	99.99	-	59,992,950
Purchase	3/2/2018	3/9/2018	Supranationals	INTL BK RECON & DEVELOPM	459053UA0	50,000,000	0.00	1.40	99.97	-	49,986,389
Purchase	3/5/2018	6/5/2018	Public Time Deposits	SAN FRANCISCO CREDIT UNI	PPA30X603	9,500,000	1.58	1.58	100.00	-	9,500,000
Purchase	3/5/2018	3/5/2019	Negotiable CDs	WESTPAC BANKING CORP NY	96121T7B8	50,000,000	2.02	2.02	100.00	-	50,000,000
Purchase	3/6/2018	4/1/2018	Money Market Funds	FIDELITY INST GOV FUND	31607A703	25,000,000	1.42	1.42	100.00	-	25,000,000
Purchase	3/8/2018	4/5/2018	U.S. Treasuries	TREASURY BILL	912796NY1	50,000,000	0.00	1.55	99.88	-	49,939,722
Purchase	3/9/2018	3/12/2018	Federal Agencies	FED HOME LN DISCOUNT NT	313385UD6	40,000,000	0.00	1.35	99.99	-	39,995,500
Purchase	3/12/2018	3/13/2018	Federal Agencies	FED HOME LN DISCOUNT NT	313385UE4	35,000,000	0.00	1.35	100.00	-	34,998,688
Purchase	3/12/2018	10/5/2020	Federal Agencies	FEDERAL HOME LOAN BANK	3130ACK52	25,530,000	1.70	2.48	98.06	189,277	25,224,378
Purchase	3/13/2018	3/14/2018	Federal Agencies	FED HOME LN DISCOUNT NT	313385UF1	55,000,000	0.00	1.35	100.00	-	54,997,938
Purchase	3/13/2018	4/1/2018	Money Market Funds	FIDELITY INST GOV FUND	31607A703	20,000,000	1.42	1.42	100.00	-	20,000,000
Purchase	3/14/2018	9/14/2020	Federal Agencies	FEDERAL HOME LOAN BANK	3130ADT93	25,000,000	2.40	2.43	99.94	-	24,984,458
Purchase	3/16/2018	4/1/2018	Money Market Funds	FIDELITY INST GOV FUND	31607A703	25,000,000	1.42	1.42	100.00	-	25,000,000
Purchase	3/16/2018	9/12/2018	Public Time Deposits	BANK OF SAN FRANCISCO	PPF00EG70	5,000,000	1.91	1.91	100.00	-	5,000,000
Purchase	3/21/2018	4/1/2018	Money Market Funds	FIDELITY INST GOV FUND	31607A703	45,000,000	1.42	1.42	100.00	-	45,000,000
Purchase	3/22/2018	3/22/2019	Federal Agencies	FEDERAL FARM CREDIT BANK	3133EJHG7	25,000,000	0.00	0.03	99.97	-	24,993,050
Purchase	3/22/2018	3/22/2019	Federal Agencies	FEDERAL FARM CREDIT BANK	3133EJHG7	25,000,000	2.13	2.16	99.97	-	24,993,050
Purchase	3/23/2018	3/26/2018	Federal Agencies	FED HOME LN DISCOUNT NT	313385UT1	55,000,000	0.00	1.55	99.99	-	54,992,896
Purchase	3/26/2018	3/27/2018	Federal Agencies	FED HOME LN DISCOUNT NT	313385UU8	30,000,000	0.00	1.60	100.00	-	29,998,667
Purchase	3/26/2018	3/27/2018	Federal Agencies	FED HOME LN DISCOUNT NT	313385UU8	50,000,000	0.00	1.60	100.00	-	49,997,778
Purchase	3/26/2018	3/27/2018	Federal Agencies	FED HOME LN DISCOUNT NT	313385UU8	50,000,000	0.00	1.60	100.00	-	49,997,778
Purchase	3/26/2018	3/27/2018	Federal Agencies	FED HOME LN DISCOUNT NT	313385UU8	50,000,000	0.00	1.60	100.00	-	49,997,778
Purchase	3/26/2018	7/2/2018	Commercial Paper	BANK TOKYO-MIT UFJ NY	06538CG21	45,000,000	0.00	2.33	99.37	-	44,715,800
Purchase	3/27/2018	3/28/2018	Commercial Paper	COLGATE-PALMOLIVE CO	19416FCU6	20,000,000	0.00	1.69	100.00	-	19,999,061
Purchase	3/27/2018	3/28/2018	Federal Agencies	FED HOME LN DISCOUNT NT	313385UV6	50,000,000	0.00	1.60	100.00	-	49,997,778
Purchase	3/27/2018	3/28/2018	Federal Agencies	FED HOME LN DISCOUNT NT	313385UV6	50,000,000	0.00	1.60	100.00	-	49,997,778
Purchase	3/27/2018	3/29/2018	Commercial Paper	NATIXIS NY BRANCH	63873KCV7	50,000,000	0.00	1.67	99.99	-	49,995,361
Purchase	3/27/2018	6/25/2018	Public Time Deposits	BRIDGE BANK	PPQD16IX7	10,000,000	1.73	1.73	100.00	-	10,000,000
Purchase	3/27/2018	3/27/2020	Federal Agencies	FEDERAL FARM CREDIT BANK	3133EJHL6	50,000,000	2.38	2.41	99.93	-	49,964,000
Purchase	3/28/2018	3/29/2018	Federal Agencies	FED HOME LN DISCOUNT NT	313385UW4	100,000,000	0.00	1.60	100.00	-	99,995,556
Purchase	3/28/2018	3/29/2018	U.S. Treasuries	TREASURY BILL	912796LS6	50,000,000	0.00	1.63	100.00	-	49,997,732
Purchase	3/28/2018	4/1/2018	Money Market Funds	BLACKROCK LIQ INST GOV F	09248U718	50,000,000	1.55	1.55	100.00	-	50,000,000
Purchase	3/28/2018	4/1/2018	Money Market Funds	MORGAN STANLEY INST GOVT	61747C707	60,000,000	1.61	1.61	100.00	-	60,000,000
Purchase	3/28/2018	4/9/2018	Supranationals	INTL BK RECON & DEVELOP	459053VH4	50,000,000	0.00	1.60	99.95	-	49,973,333
Purchase	3/28/2018	7/23/2018	Commercial Paper	TOYOTA MOTOR CREDIT CORP	89233HGP3	50,000,000	0.00	2.34	99.25	-	49,623,000
Purchase	3/28/2018	4/1/2019	Negotiable CDs	ROYAL BANK OF CANADA NY	78012UCE3	50,000,000	2.36	2.36	100.00	-	50,000,000
Purchase	3/29/2018	4/1/2018	Money Market Funds	MORGAN STANLEY INST GOVT	61747C707	40,000,000	1.61	1.61	100.00	-	40,000,000
Purchase	3/29/2018	4/2/2018	Commercial Paper	COLGATE-PALMOLIVE CO	19416FD27	18,000,000	0.00	1.69	99.98	-	17,996,620
Purchase	3/29/2018	4/5/2018	Commercial Paper	COLGATE-PALMOLIVE CO	19416FD50	60,000,000	0.00	1.72	99.97	-	59,979,933
Purchase	3/29/2018	7/9/2018	Negotiable CDs	BANK OF MONTREAL CHICAGO	06371E2G1	25,000,000	2.25	2.25	100.00	-	25,000,000
Purchase	3/29/2018	9/27/2018	U.S. Treasuries	TREASURY BILL	912796QA0	50,000,000	0.00	1.92	99.04	-	49,520,354
Purchase	3/29/2018	9/27/2018	U.S. Treasuries	TREASURY BILL	912796QA0	50,000,000	0.00	1.90	99.05	-	49,523,261
Purchase	3/29/2018	9/28/2018	Negotiable CDs	NORINCHUKIN BANK (NY)	65602UP85	50,000,000	2.28	2.28	100.00	-	50,000,000
Purchase	3/29/2018	3/29/2021	Federal Agencies	FARMER MAC	3132X0Q53	6,350,000	2.60	2.64	99.89	-	6,343,079
Purchase	3/29/2018	3/29/2021	Federal Agencies	FARMER MAC	3132X0Q53	20,450,000	2.60	2.64	99.89	-	20,427,710
Purchase	3/31/2018	4/1/2018	Money Market Funds	FIDELITY INST GOV FUND	31607A703	356,389	1.42	1.42	100.00	-	356,389
Purchase	3/31/2018	4/1/2018	Money Market Funds	MORGAN STANLEY INST GOVT	61747C707	16,740	1.61	1.61	100.00	-	16,740
Subtotals						\$2,030,203,160	0.62	1.73	\$ 99.81	\$ 189,277	\$2,026,625,768

Investment Transactions

Pooled Fund

Transaction	Settle	Maturity	Type of Investment	Issuer Name	CUSIP	Par Value	Coupon	YTM	Price	Interest	Transaction
Sale	3/1/2018	4/1/2018	Money Market Funds	FIDELITY INST GOV FUND	31607A703	\$ 100,000,000	1.28	1.28	\$ 100.00	\$ -	\$ 100,000,000
Sale	3/8/2018	4/1/2018	Money Market Funds	FIDELITY INST GOV FUND	31607A703	50,000,000	1.42	1.42	100.00	-	50,000,000
Sale	3/19/2018	4/1/2018	Money Market Funds	FIDELITY INST GOV FUND	31607A703	20,000,000	1.42	1.42	100.00	-	20,000,000
Sale	3/26/2018	4/1/2018	Money Market Funds	FIDELITY INST GOV FUND	31607A703	100,000,000	1.42	1.42	100.00	-	100,000,000
Sale	3/28/2018	3/30/2018	Commercial Paper	TOYOTA MOTOR CREDIT CORP	89233HCW2	50,000,000	0.00	1.53	99.99	-	49,995,806
Sale	3/28/2018	4/5/2018	Negotiable CDs	ROYAL BANK OF CANADA NY	78009NW36	50,000,000	1.84	1.84	100.00	58,656	50,059,156
Subtotals						\$ 370,000,000	1.25	1.45	\$ 100.00	\$ 58,656	\$ 370,054,962
Maturity	3/1/2018	3/1/2018	Federal Agencies	FARMER MAC	3132X0JL6	\$ 50,000,000	0.88	0.88	100.00	\$ 218,750	\$ 50,218,750
Maturity	3/1/2018	3/1/2018	Commercial Paper	NATIXIS NY BRANCH	63873KC13	12,000,000	0.00	1.35	100.00	-	12,000,000
Maturity	3/2/2018	3/2/2018	Federal Agencies	FED HOME LN DISCOUNT NT	313385TT3	20,000,000	0.00	1.32	100.00	-	20,000,000
Maturity	3/2/2018	3/2/2018	Commercial Paper	TOYOTA MOTOR CREDIT CORP	89233HC28	50,000,000	0.00	1.40	100.00	-	50,000,000
Maturity	3/5/2018	3/5/2018	Supranationals	INTL BK RECON & DEVELOP	459053TW4	70,000,000	0.00	1.35	100.00	-	70,000,000
Maturity	3/5/2018	3/5/2018	Supranationals	INTERNATIONAL FINANCE CO	459515TW2	25,000,000	0.00	1.38	100.00	-	25,000,000
Maturity	3/5/2018	3/5/2018	Commercial Paper	NATIXIS NY BRANCH	63873KC54	60,000,000	0.00	1.41	100.00	-	60,000,000
Maturity	3/6/2018	3/6/2018	Supranationals	INTL FINANCE CORP	45950VKP0	50,000,000	1.63	1.63	100.00	63,500	50,063,500
Maturity	3/7/2018	3/7/2018	Federal Agencies	FED FARM CRD DISCOUNT NT	313313TY4	25,000,000	0.00	1.08	100.00	-	25,000,000
Maturity	3/7/2018	3/7/2018	Federal Agencies	FED FARM CRD DISCOUNT NT	313313TY4	25,000,000	0.00	1.08	100.00	-	25,000,000
Maturity	3/9/2018	3/9/2018	Supranationals	INTL BK RECON & DEVELOPM	459053UA0	50,000,000	0.00	1.40	100.00	-	50,000,000
Maturity	3/12/2018	3/12/2018	Federal Agencies	FED HOME LN DISCOUNT NT	313385UD6	40,000,000	0.00	1.35	100.00	-	40,000,000
Maturity	3/13/2018	3/13/2018	Federal Agencies	FED HOME LN DISCOUNT NT	313385UE4	35,000,000	0.00	1.35	100.00	-	35,000,000
Maturity	3/14/2018	3/14/2018	Federal Agencies	FED HOME LN DISCOUNT NT	313385UF1	55,000,000	0.00	1.35	100.00	-	55,000,000
Maturity	3/19/2018	3/19/2018	Commercial Paper	BANK TOKYO-MIT UFJ NY	06538CCK5	70,000,000	0.00	1.58	100.00	-	70,000,000
Maturity	3/21/2018	3/21/2018	Commercial Paper	NATIXIS NY BRANCH	63873KCM7	36,000,000	0.00	1.45	100.00	-	36,000,000
Maturity	3/21/2018	3/21/2018	Public Time Deposits	TRANS-PAC NATIONAL BK	PP9F2HFF8	240,000	1.47	1.47	100.00	815	240,815
Maturity	3/22/2018	3/22/2018	Federal Agencies	FEDERAL FARM CREDIT BANK	3133EEN71	50,000,000	1.63	1.82	100.00	63,413	50,063,413
Maturity	3/23/2018	3/23/2018	Commercial Paper	TOYOTA MOTOR CREDIT CORP	89233HCP7	50,000,000	0.00	1.47	100.00	-	50,000,000
Maturity	3/26/2018	3/26/2018	Federal Agencies	FED HOME LN DISCOUNT NT	313385UT1	55,000,000	0.00	1.55	100.00	-	55,000,000
Maturity	3/26/2018	3/26/2018	Federal Agencies	FEDERAL FARM CREDIT BANK	3133EFWG8	25,000,000	1.78	1.92	100.00	34,625	25,034,625
Maturity	3/27/2018	3/27/2018	Federal Agencies	FED HOME LN DISCOUNT NT	313385UU8	30,000,000	0.00	1.60	100.00	-	30,000,000
Maturity	3/27/2018	3/27/2018	Federal Agencies	FED HOME LN DISCOUNT NT	313385UU8	50,000,000	0.00	1.60	100.00	-	50,000,000
Maturity	3/27/2018	3/27/2018	Federal Agencies	FED HOME LN DISCOUNT NT	313385UU8	50,000,000	0.00	1.60	100.00	-	50,000,000
Maturity	3/27/2018	3/27/2018	Federal Agencies	FED HOME LN DISCOUNT NT	313385UU8	50,000,000	0.00	1.60	100.00	-	50,000,000
Maturity	3/28/2018	3/28/2018	Commercial Paper	COLGATE-PALMOLIVE CO	19416FCU6	20,000,000	0.00	1.69	100.00	-	20,000,000
Maturity	3/28/2018	3/28/2018	Federal Agencies	FED HOME LN DISCOUNT NT	313385UV6	50,000,000	0.00	1.60	100.00	-	50,000,000
Maturity	3/28/2018	3/28/2018	Federal Agencies	FED HOME LN DISCOUNT NT	313385UV6	50,000,000	0.00	1.60	100.00	-	50,000,000
Maturity	3/29/2018	3/29/2018	Federal Agencies	FED HOME LN DISCOUNT NT	313385UW4	100,000,000	0.00	1.60	100.00	-	100,000,000
Maturity	3/29/2018	3/29/2018	Commercial Paper	NATIXIS NY BRANCH	63873KCV7	50,000,000	0.00	1.67	100.00	-	50,000,000
Maturity	3/29/2018	3/29/2018	U.S. Treasuries	TREASURY BILL	912796LS6	50,000,000	0.00	1.45	100.00	-	50,000,000
Maturity	3/29/2018	3/29/2018	U.S. Treasuries	TREASURY BILL	912796LS6	50,000,000	0.00	1.63	100.00	-	50,000,000
Subtotals						\$1,403,240,000	0.18	1.49	\$ -	\$ 381,103	\$1,403,621,103

Investment Transactions

Pooled Fund

Transaction	Settle	Maturity	Type of Investment	Issuer Name	CUSIP	Par Value	Coupon	YTM	Price	Interest	Transaction
Interest	3/1/2018	4/1/2018	Money Market Funds	BLACKROCK LIQ INST GOV F	09248U718	\$ 31,507	1.25	1.25	0.00	0.00	\$ 30
Interest	3/1/2018	10/1/2018	Negotiable CDs	BANK OF MONTREAL CHICAGO	06371EQJ9	50,000,000	1.80	1.79	0.00	0.00	69,794
Interest	3/1/2018	9/1/2022	Federal Agencies	FEDERAL HOME LOAN BANK	3130AC7E8	50,000,000	2.17	2.17	0.00	0.00	542,500
Interest	3/2/2018	7/2/2018	Negotiable CDs	BANK OF MONTREAL CHICAGO	06371EDT1	50,000,000	1.78	1.78	0.00	0.00	69,211
Interest	3/2/2018	7/2/2018	Negotiable CDs	BANK OF MONTREAL CHICAGO	06371EQT7	50,000,000	1.77	1.77	0.00	0.00	68,822
Interest	3/2/2018	7/2/2018	Negotiable CDs	WESTPAC BANKING CORP NY	96121T3R7	50,000,000	1.73	1.73	0.00	0.00	67,266
Interest	3/2/2018	1/2/2019	Federal Agencies	FEDERAL FARM CREDIT BANK	3133EGDM4	25,000,000	1.74	1.74	0.00	0.00	33,828
Interest	3/2/2018	12/2/2019	Federal Agencies	FEDERAL FARM CREDIT BANK	3133EGN43	50,000,000	1.74	1.74	0.00	0.00	67,655
Interest	3/2/2018	11/2/2020	Federal Agencies	FARMER MAC	3132X0KR1	25,000,000	1.78	1.78	0.00	0.00	34,605
Interest	3/3/2018	1/3/2019	Federal Agencies	FEDERAL FARM CREDIT BANK	3133EG2V6	25,000,000	1.63	1.63	0.00	0.00	31,684
Interest	3/3/2018	1/3/2020	Federal Agencies	FARMER MAC	3132X0PG0	50,000,000	1.65	1.65	0.00	0.00	64,146
Interest	3/4/2018	9/4/2020	Supranationals	INTL BK RECON & DEVELOPM	459058GA5	50,000,000	1.62	1.63	0.00	0.00	417,500
Interest	3/5/2018	4/5/2018	Negotiable CDs	ROYAL BANK OF CANADA NY	78009NW36	50,000,000	1.73	1.73	0.00	0.00	67,257
Interest	3/6/2018	12/6/2018	Negotiable CDs	TORONTO DOMINION BANK NY	89113XQJ6	25,000,000	1.81	1.81	0.00	0.00	35,186
Interest	3/6/2018	12/6/2018	Negotiable CDs	TORONTO DOMINION BANK NY	89113XQJ6	50,000,000	1.81	1.81	0.00	0.00	70,372
Interest	3/7/2018	12/7/2018	Negotiable CDs	BANK OF NOVA SCOTIA HOUS	06417GC48	50,000,000	1.81	1.81	0.00	0.00	70,392
Interest	3/7/2018	12/7/2018	Negotiable CDs	ROYAL BANK OF CANADA NY	78009N5B8	50,000,000	1.81	1.81	0.00	0.00	70,392
Interest	3/7/2018	12/7/2018	Negotiable CDs	WESTPAC BANKING CORP NY	96121T5B0	50,000,000	1.78	1.78	0.00	0.00	69,225
Interest	3/8/2018	6/8/2018	Federal Agencies	FEDERAL FARM CREDIT BANK	3133EFC72	25,000,000	1.63	1.63	0.00	0.00	31,777
Interest	3/8/2018	6/8/2018	Federal Agencies	FEDERAL FARM CREDIT BANK	3133EFC72	50,000,000	1.63	1.63	0.00	0.00	63,555
Interest	3/8/2018	3/8/2019	Negotiable CDs	BANK OF MONTREAL CHICAGO	06427KSW8	27,838,000	1.80	1.80	0.00	0.00	125,454
Interest	3/8/2018	12/8/2021	Federal Agencies	FEDERAL FARM CREDIT BANK	3133EGS97	25,000,000	1.85	1.85	0.00	0.00	35,958
Interest	3/8/2018	12/8/2021	Federal Agencies	FEDERAL FARM CREDIT BANK	3133EGS97	25,000,000	1.85	1.85	0.00	0.00	35,958
Interest	3/9/2018	11/9/2018	Negotiable CDs	BANK OF NOVA SCOTIA HOUS	06417GZT8	50,000,000	1.78	1.78	0.00	0.00	69,196
Interest	3/9/2018	11/9/2018	Negotiable CDs	TORONTO DOMINION BANK NY	89113XLP7	50,000,000	1.77	1.77	0.00	0.00	68,807
Interest	3/9/2018	8/9/2019	Federal Agencies	FEDERAL FARM CREDIT BANK	3133EGED3	25,000,000	1.76	1.76	0.00	0.00	34,306
Interest	3/9/2018	8/9/2019	Federal Agencies	FEDERAL FARM CREDIT BANK	3133EGED3	25,000,000	1.76	1.76	0.00	0.00	34,306
Interest	3/11/2018	6/11/2018	Federal Agencies	FEDERAL FARM CREDIT BANK	3133EEW48	50,000,000	1.63	1.65	0.00	0.00	63,224
Interest	3/12/2018	6/12/2018	Negotiable CDs	ROYAL BANK OF CANADA NY	78009NU46	50,000,000	1.68	1.68	0.00	0.00	209,848
Interest	3/13/2018	3/13/2020	Federal Agencies	FEDERAL HOME LOAN BANK	313378J77	15,710,000	1.88	1.56	0.00	0.00	147,281
Interest	3/13/2018	9/13/2021	Federal Agencies	FEDERAL HOME LOAN BANK	3130ACF33	25,000,000	1.88	1.95	0.00	0.00	234,375
Interest	3/14/2018	9/14/2018	Federal Agencies	FEDERAL FARM CREDIT BANK	3133EGFQ3	25,000,000	0.88	0.91	0.00	0.00	109,375
Interest	3/15/2018	10/15/2018	Negotiable CDs	WESTPAC BANKING CORP NY	96121T4S4	50,000,000	1.78	1.78	0.00	0.00	69,125
Interest	3/15/2018	6/15/2022	Federal Agencies	FREDDIE MAC	3134GBF72	50,000,000	2.01	2.01	0.00	0.00	502,500
Interest	3/16/2018	4/16/2018	Federal Agencies	FEDERAL FARM CREDIT BANK	3133EEZC7	50,000,000	1.64	1.73	0.00	0.00	63,705
Interest	3/17/2018	10/17/2018	Federal Agencies	FEDERAL FARM CREDIT BANK	3133EGFK6	25,000,000	1.72	1.72	0.00	0.00	33,444
Interest	3/17/2018	10/17/2018	Federal Agencies	FEDERAL FARM CREDIT BANK	3133EGFK6	25,000,000	1.72	1.72	0.00	0.00	33,444
Interest	3/19/2018	7/19/2018	Federal Agencies	FEDERAL FARM CREDIT BANK	3133EGBQ7	25,000,000	1.72	1.72	0.00	0.00	33,444
Interest	3/19/2018	7/19/2018	Federal Agencies	FEDERAL FARM CREDIT BANK	3133EGBQ7	25,000,000	1.72	1.72	0.00	0.00	33,444
Interest	3/19/2018	12/19/2018	Negotiable CDs	ROYAL BANK OF CANADA NY	78009N5M4	50,000,000	1.83	1.83	0.00	0.00	68,766
Interest	3/19/2018	3/19/2019	Federal Agencies	FARMER MAC	3132X0ED9	40,000,000	1.68	1.68	0.00	0.00	168,331
Interest	3/20/2018	6/20/2018	Federal Agencies	FEDERAL FARM CREDIT BANK	3133EGGC3	25,000,000	1.71	1.71	0.00	0.00	33,323
Interest	3/20/2018	8/20/2019	Federal Agencies	FEDERAL FARM CREDIT BANK	3133EGX67	50,000,000	1.71	1.71	0.00	0.00	66,646
Interest	3/20/2018	3/20/2020	Federal Agencies	FEDERAL FARM CREDIT BANK	3133EHZN6	20,000,000	1.45	1.49	0.00	0.00	145,000
Interest	3/21/2018	12/21/2018	Negotiable CDs	WESTPAC BANKING CORP NY	96121T5K0	50,000,000	1.83	1.83	0.00	0.00	70,997
Interest	3/21/2018	12/21/2020	Federal Agencies	FEDERAL FARM CREDIT BANK	3133EGX75	50,000,000	1.79	1.79	0.00	0.00	69,441
Interest	3/22/2018	3/22/2021	Federal Agencies	FEDERAL HOME LOAN BANK	3130AAYP7	8,585,000	2.20	2.17	0.00	0.00	94,435
Interest	3/23/2018	1/23/2019	Negotiable CDs	BANK OF MONTREAL CHICAGO	06371EL21	25,000,000	1.85	1.85	0.00	0.00	36,021
Interest	3/23/2018	9/23/2019	Federal Agencies	FREDDIE MAC	3134GAHR8	25,000,000	1.38	1.38	0.00	0.00	85,938
Interest	3/24/2018	12/24/2020	Federal Agencies	FEDERAL FARM CREDIT BANK	3133EFTX5	100,000,000	1.95	1.95	0.00	0.00	151,721
Interest	3/25/2018	2/25/2019	Federal Agencies	FEDERAL FARM CREDIT BANK	3133EGBU8	50,000,000	1.80	1.80	0.00	0.00	69,833
Interest	3/25/2018	1/25/2021	Federal Agencies	FEDERAL FARM CREDIT BANK	3133EG4T9	20,000,000	1.78	1.78	0.00	0.00	27,700
Interest	3/25/2018	1/25/2021	Federal Agencies	FEDERAL FARM CREDIT BANK	3133EG4T9	20,000,000	1.78	1.78	0.00	0.00	27,700
Interest	3/26/2018	7/24/2018	Negotiable CDs	ROYAL BANK OF CANADA NY	78009NX50	50,000,000	1.82	1.82	0.00	0.00	70,805
Interest	3/26/2018	7/26/2018	Negotiable CDs	WESTPAC BANKING CORP NY	96121T3W6	50,000,000	1.77	1.77	0.00	0.00	68,861
Interest	3/26/2018	10/25/2018	Negotiable CDs	BANK OF MONTREAL CHICAGO	06371ERP4	45,000,000	1.83	1.83	0.00	0.00	64,075

Investment Transactions Pooled Fund

Transaction	Settle	Maturity	Type of Investment	Issuer Name	CUSIP	Par Value	Coupon	YTM	Price	Interest	Transaction
Interest	3/26/2018	10/25/2018	Negotiable CDs	BANK OF NOVA SCOTIA HOUS	06417GZR2	50,000,000	1.82	1.82	0.00	0.00	70,805
Interest	3/26/2018	10/25/2018	Negotiable CDs	TORONTO DOMINION BANK NY	89113XJJ4	50,000,000	1.82	1.82	0.00	0.00	70,805
Interest	3/27/2018	11/27/2018	Negotiable CDs	ROYAL BANK OF CANADA NY	78012UAW5	25,000,000	1.93	1.93	0.00	0.00	37,551
Interest	3/27/2018	9/27/2019	Federal Agencies	FANNIE MAE	3135G0Q30	50,000,000	1.18	1.18	0.00	0.00	295,000
Interest	3/28/2018	9/28/2018	Federal Agencies	FEDERAL HOME LOAN BANK	3130A9C90	25,000,000	1.05	1.05	0.00	0.00	131,250
Interest	3/28/2018	12/28/2018	Negotiable CDs	WESTPAC BANKING CORP NY	96121T5M6	50,000,000	1.88	1.88	0.00	0.00	73,033
Interest	3/28/2018	9/28/2020	Federal Agencies	FEDERAL HOME LOAN BANK	3130ACE26	18,000,000	1.38	1.48	0.00	0.00	123,750
Interest	3/28/2018	9/28/2020	Federal Agencies	FEDERAL HOME LOAN BANK	3130ACE26	30,000,000	1.38	1.48	0.00	0.00	206,250
Interest	3/30/2018	9/30/2019	Supranationals	INTL BANK RECON & DEVELO	459058FQ1	50,000,000	1.20	1.75	0.00	0.00	300,000
Interest	3/31/2018	4/1/2018	Money Market Funds	FIDELITY INST GOV FUND	31607A703	245,810,159	1.42	1.42	0.00	0.00	356,389
Interest	3/31/2018	4/1/2018	Money Market Funds	MORGAN STANLEY INST GOVT	61747C707	100,671,769	1.61	1.61	0.00	0.00	16,740
Subtotals						\$2,841,646,435	1.70	1.71	\$ -	\$ -	\$ 6,883,555
Grand Totals			52 Purchases								
			(6) Sales								
			(32) Maturities / Calls								
			14 Change in number of positions								