



SFMTA
Municipal
Transportation
Agency

Commuter Shuttles Pilot Update

SFCTA CAC
January 28, 2015

Pilot Approach

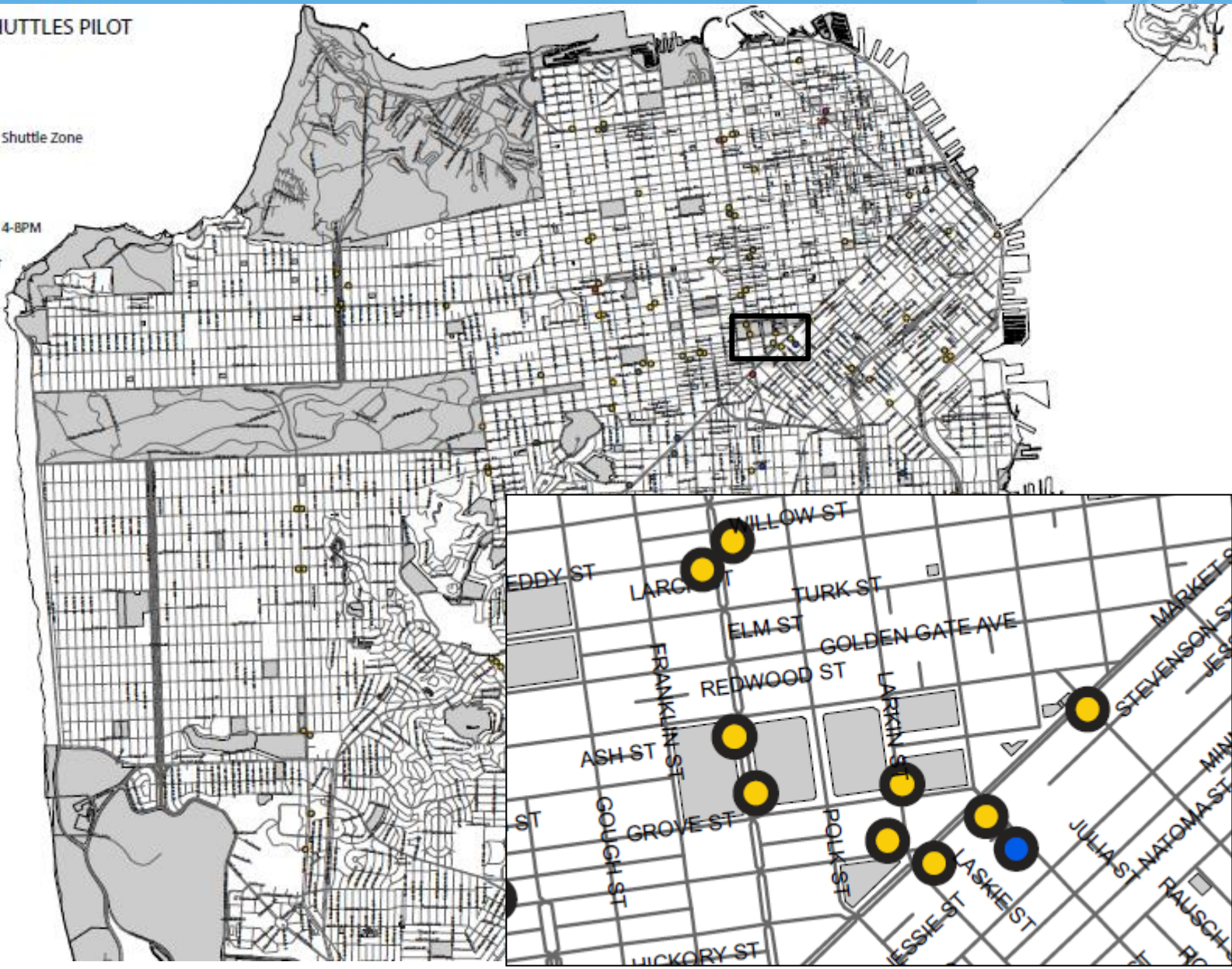
- Informed by information we have
- Allows for action now
- Targeted to problems:
 - Safety concerns
 - Muni delay
 - Enforcement clarity
 - Lack of complete information
- Tests regulatory approach
- Gathers data to inform long-term solution

Pilot Overview

Problems to Solve	Pilot Program Requirements
Safety	<ul style="list-style-type: none">• Operating guidelines• Training, including on bike/ped safety measures• Compliance with CA PUC requirements• Enforcement
Muni delay/ Localized congestion	<ul style="list-style-type: none">• Operating guidelines• Enforcement
Vehicle identification	<ul style="list-style-type: none">• Placards with unique identifiers
Recover costs of program	<ul style="list-style-type: none">• Fee
Enforcement	<ul style="list-style-type: none">• Fee includes focused enforcement• On-board GPS• Signage and placards• Training
Lack of comprehensive/ uniform information	<ul style="list-style-type: none">• Required information in application• On-board GPS

**SFMTA COMMUTER SHUTTLES PILOT
PILOT NETWORK**
09.03.2014

- Shared Muni-Commuter Shuttle Zone
- White Zone
 - AM, 6-10AM
 - PM, 4-8PM
 - AM/PM, 6-10AM and 4-8PM
- Buses and Vans With 8 or More Passengers Restricted Streets
- Weight Restricted-Use Streets (> 3 tons)
- Weight Restricted-Use Streets (> 9 tons)
- Pending Approval



Pilot Implementation: Vehicle Identification

COMMUTER SHUTTLE PILOT

PERMIT ID#

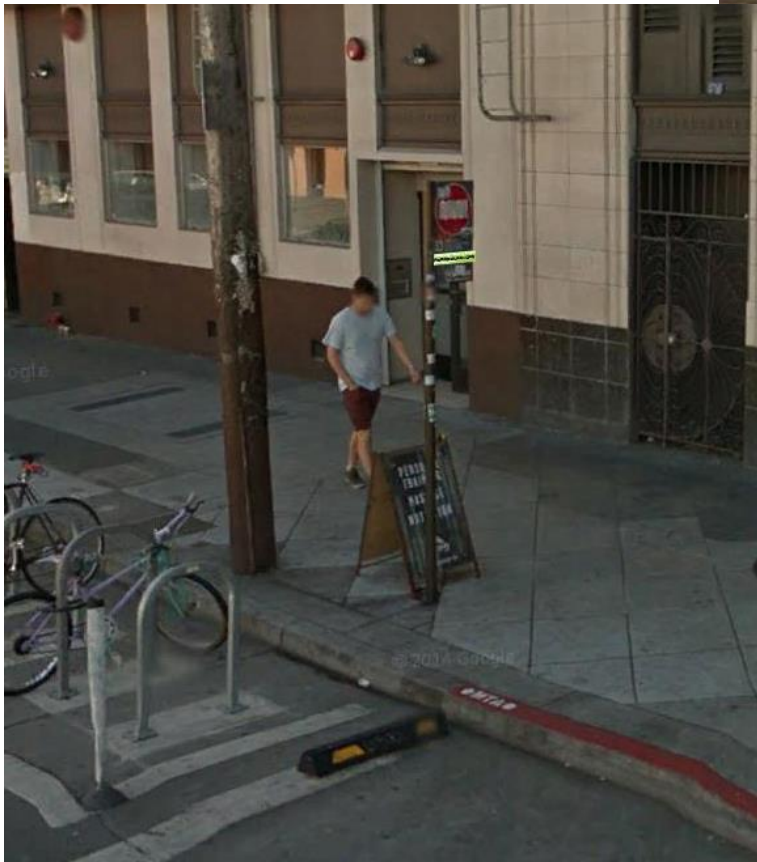
00-000

 **SFMTA**
Municipal
Transportation
Agency

CONCERNS? COMPLAINTS? CONTACT 311



Pilot Implementation: Network Identification



Evaluation

1. *Does pilot approach reduce conflicts for Muni and other users?*
2. *What enforcement is needed, given permit program framework?*
3. *What are the actual transportation system needs and costs to accommodate commuter shuttles in SF?*

Pilot Timeline

- June 2014: Pre-pilot field data collection
- August 1, 2014: Pilot launch
- Summer 2015: During-pilot field data collection
- Summer/Fall 2015: Evaluation of pilot, development of long-term policy proposal
- Fall/Winter 2015: Long-term policy vetting/review/adoption
- January 2016: Pilot complete

For more information

<http://sfmta.com/projects-planning/projects/commuter-shuttles-policy-and-pilot-program> (or, search “commuter shuttle” at SFMTA.com)

Carli Paine, carli.paine@sfmta.com