

Plan Bay Area 2040 Update

Citizens Advisory Committee
Agenda Item 8



SAN FRANCISCO COUNTY TRANSPORTATION AUTHORITY

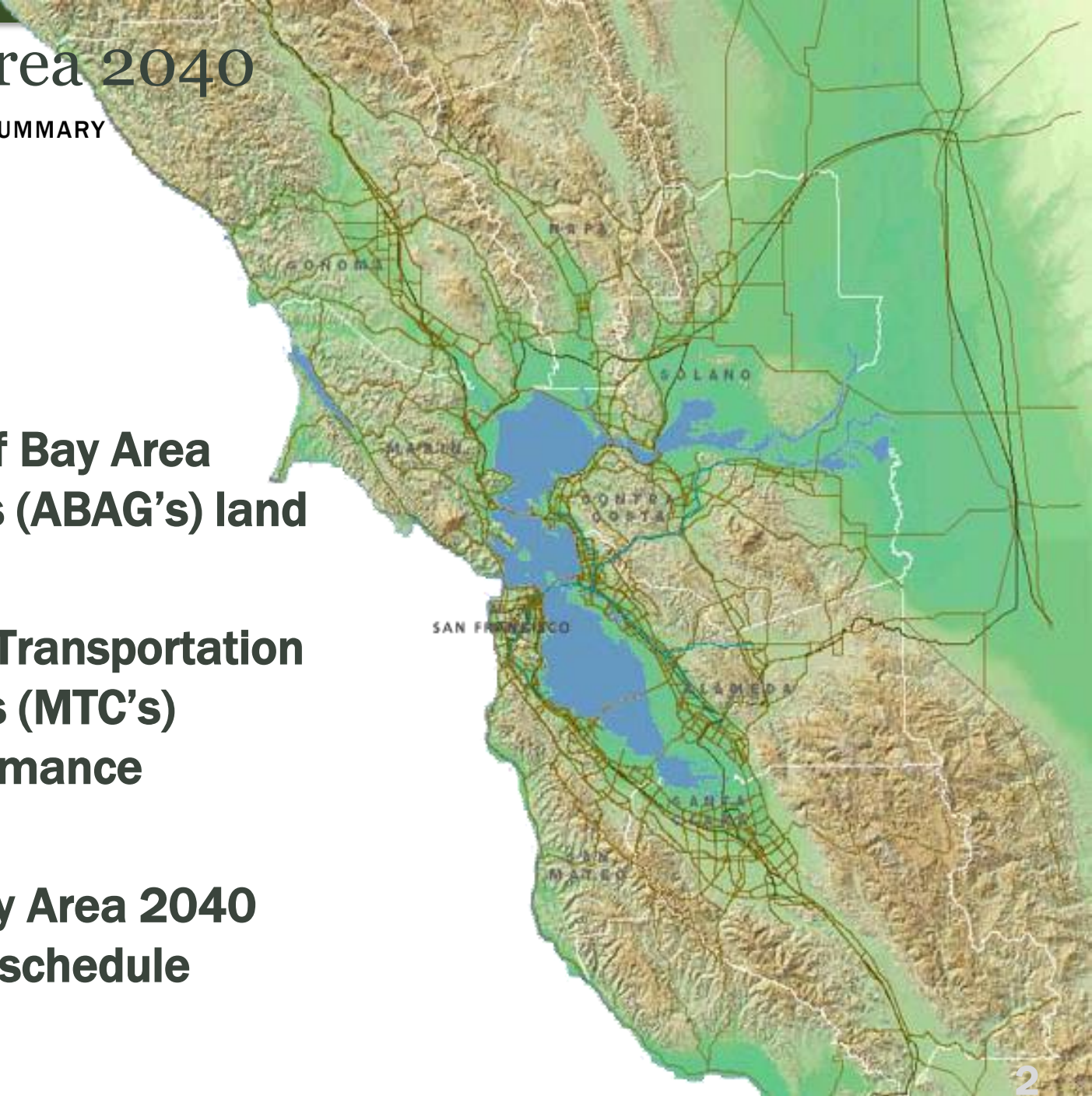
March 23, 2016

Plan Bay Area 2040

PLAN BAY AREA 2040 > SUMMARY

Today's Update:

- ▶ Association of Bay Area Government's (ABAG's) land use scenarios
- ▶ Metropolitan Transportation Commission's (MTC's) project performance evaluation
- ▶ Draft Plan Bay Area 2040 development schedule

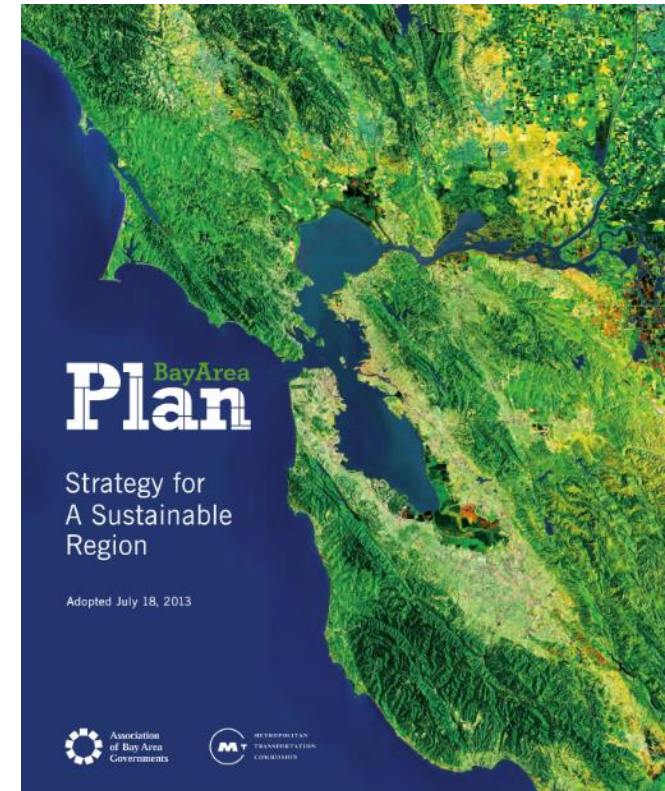


What is Plan Bay Area 2040?



PLAN BAY AREA 2040 > SUMMARY

- ▶ **Blueprint for the region's transportation investment for the 9 Bay Area counties through 2040**
- ▶ **Regional strategy to meet greenhouse gas reduction targets**
- ▶ **Plan to accommodate the need for new growth**
- ▶ **Update of 2013's Plan Bay Area with new focus areas:**
 - ▶ **Goods movement**
 - ▶ **Adaptation**
 - ▶ **Economic prosperity**
 - ▶ **Affordability and Displacement**



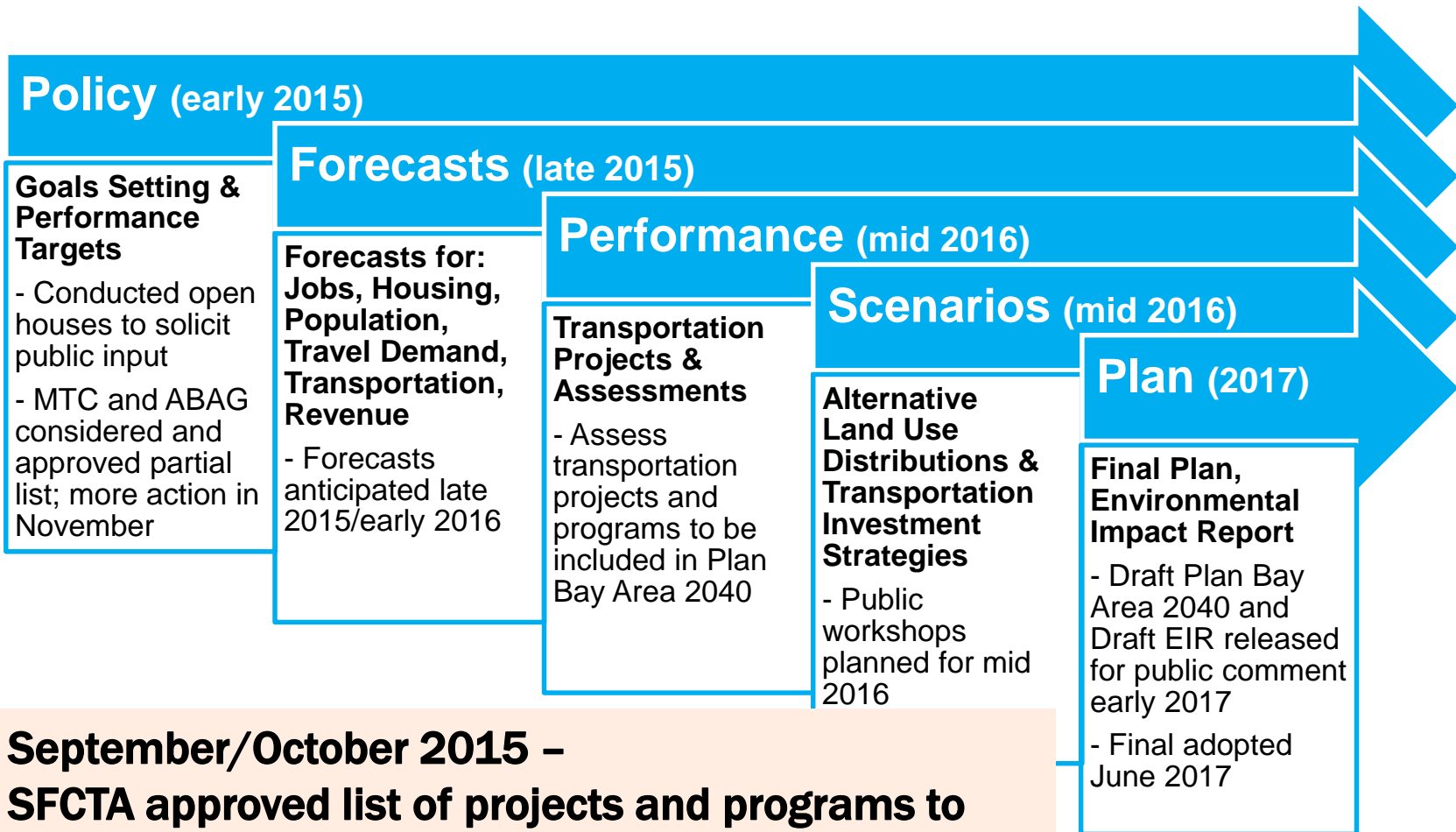
What Does Plan Bay Area Include?



PLAN BAY AREA 2040 > SUMMARY

- ▶ **Regional goals and performance targets**
- ▶ **Jobs and housing allocation by jurisdiction by income level**
- ▶ **Revenue forecast**
- ▶ **Policies for future investment and revenue advocacy**
- ▶ **Financially constrained project list**

MAJOR MILESTONES

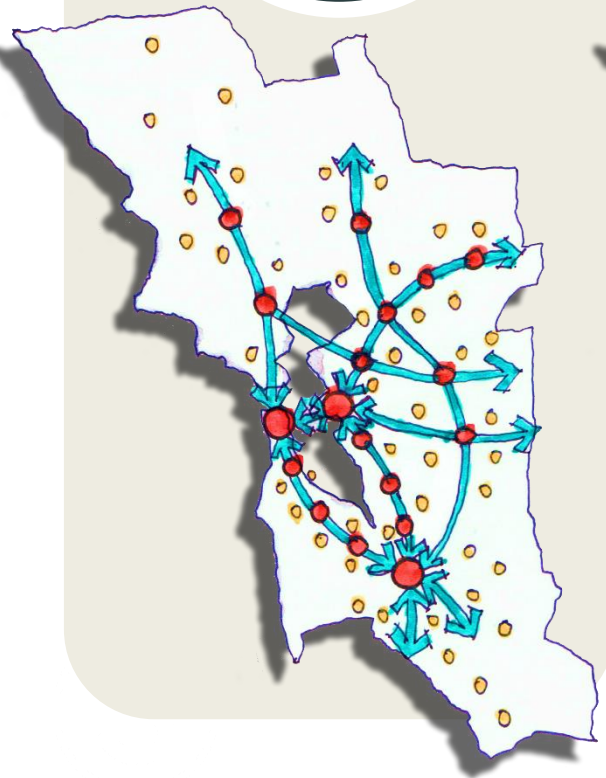


September/October 2015 – SFCTA approved list of projects and programs to submit to MTC for consideration for inclusion in PBA 2040

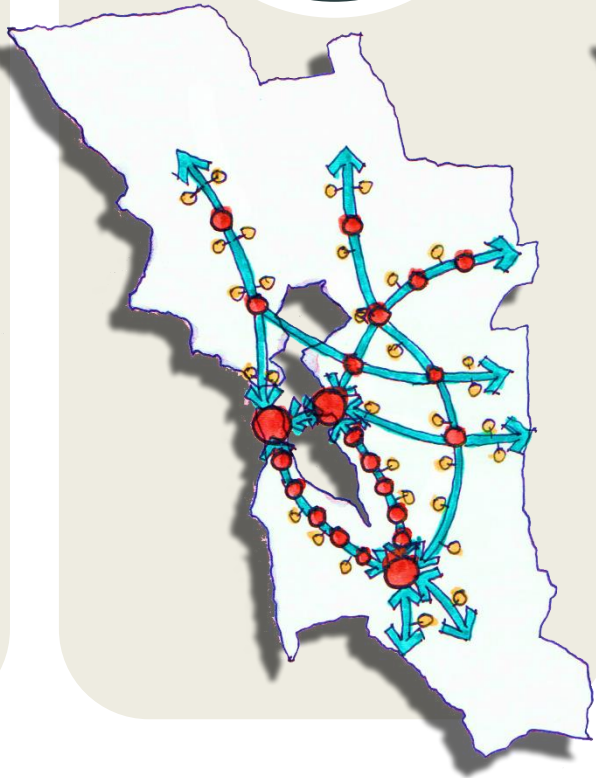
SCENARIO CONCEPTS



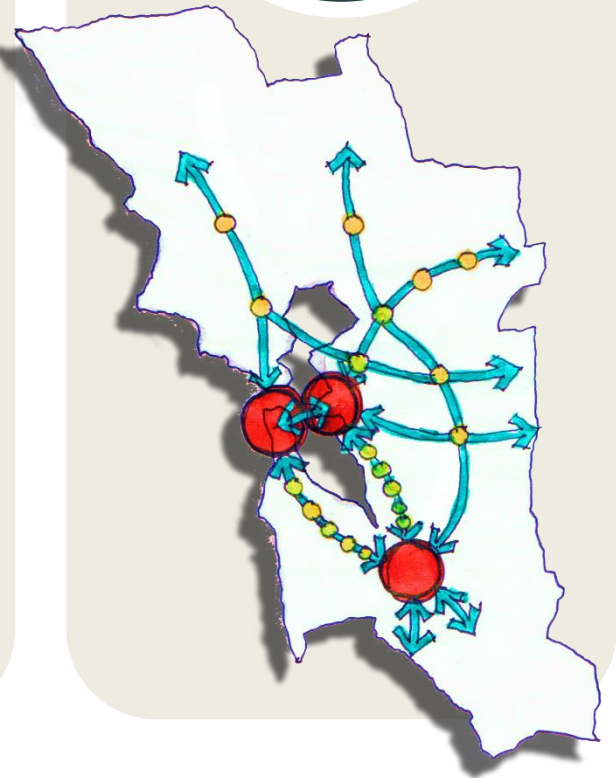
1



2



3





TARGETS ASSESSMENT

Assessed qualitatively using target scores

Plan
BayArea
2040



Climate Protection



Affordable Housing



Non-Auto Mode Share



Adequate Housing



Displacement Risk



Road State of Good Repair



Healthy & Safe Communities



Access to Jobs



Transit State of Good Repair



Open Space & Agricultural Preservation



Job Creation



Housing & Transportation Costs



Goods Movement

Maximum score:

13

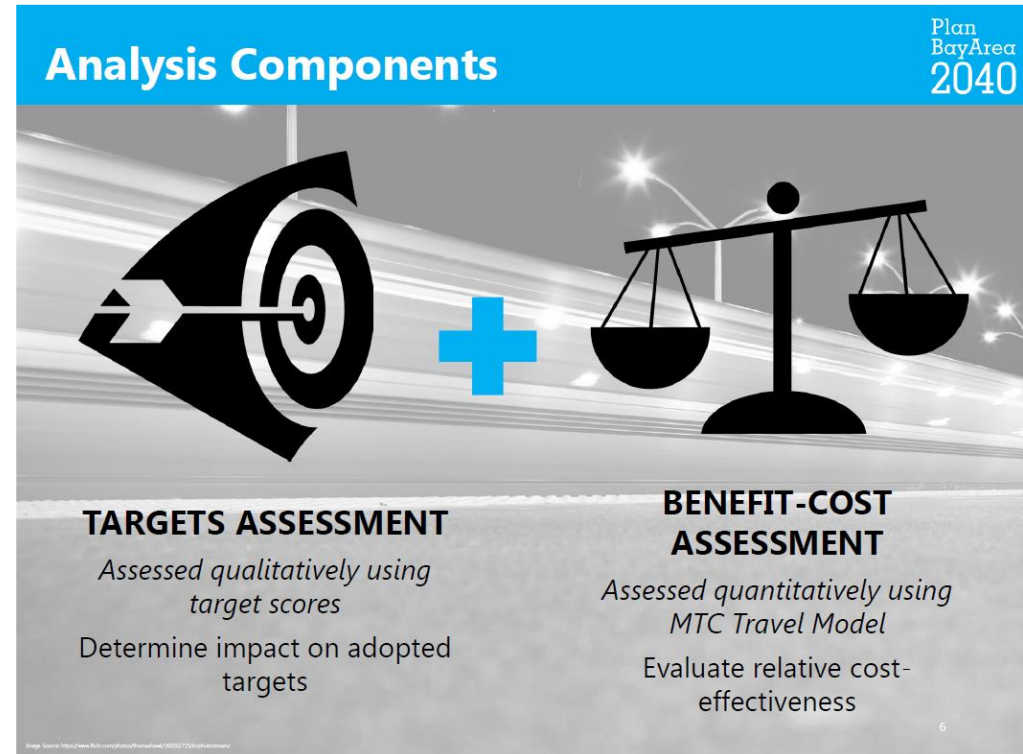
if the project supports all 13 targets strongly

Investment Performance Assessment

PLAN BAY AREA 2040 > MTC



- ▶ **Projects - evaluate only largest capacity increasing projects that are seeking discretionary revenue**
- ▶ **Doesn't include projects under \$100 M or programmatic categories**
- ▶ **Includes State of Good Repair (transit, local streets and roads, highways)**
- ▶ **Meant to identify a small number of high and low performers**



Investment Performance Assessment

PLAN BAY AREA 2040 > MTC



- ▶ **Initial glimpse: Many changes in project assessment from 2013's Plan Bay Area**
- ▶ **We are working with project sponsors to resolve outstanding questions on methodology**
 - ▶ **Model inputs for cost-benefit analysis**
 - ▶ **How targets are evaluated (is outcome useful?)**
 - ▶ **Certain benefits not captured: crowding reduction, reliability improvements, safety**
- ▶ **Advocate for weighing performance target score equally with cost-benefit analysis**
- ▶ **Make case for San Francisco's high and low performers**
- ▶ **Determine how other projects/programs considered for inclusion in preferred scenario**

What's Next? (Estimated Schedule)



PLAN BAY AREA 2040 > NEXT STEPS

March and April 2016	MTC releases draft performance results, project sponsors review and comment
April CAC / May Plans and Programs	SFCTA agenda item on results of project performance assessment
May/June 2016	MTC/ABAG San Francisco Public Open House on Plan Bay Area 2040
May CAC / June Plans and Programs	SFCTA agenda item on link between housing policy and transportation investment
June 2016	ABAG releases draft scenario performance assessment, MTC approves final project performance assessment
June CAC / July Plans and Programs	SFCTA agenda item evaluating progress toward meeting PBA 2040 goals and objectives and what we'd like to see in preferred scenario
July 2016	MTC and ABAG release draft preferred scenario
September 2016	MTC and ABAG adopt preferred transportation investment and land use scenario
September 2016 through June 2017	MTC and ABAG perform environmental review of preferred scenario
June 2017	MTC and ABAG adopt Plan Bay Area 2040

Questions?

For more information:

Amber Crabbe, Assistant Deputy Director

amber.crabbe@sfcta.org

www.sfcta.org/rtp



SAN FRANCISCO COUNTY TRANSPORTATION AUTHORITY