

Plan Bay Area 2040 Update

Citizens Advisory Committee
Agenda Item 10



SAN FRANCISCO COUNTY TRANSPORTATION AUTHORITY

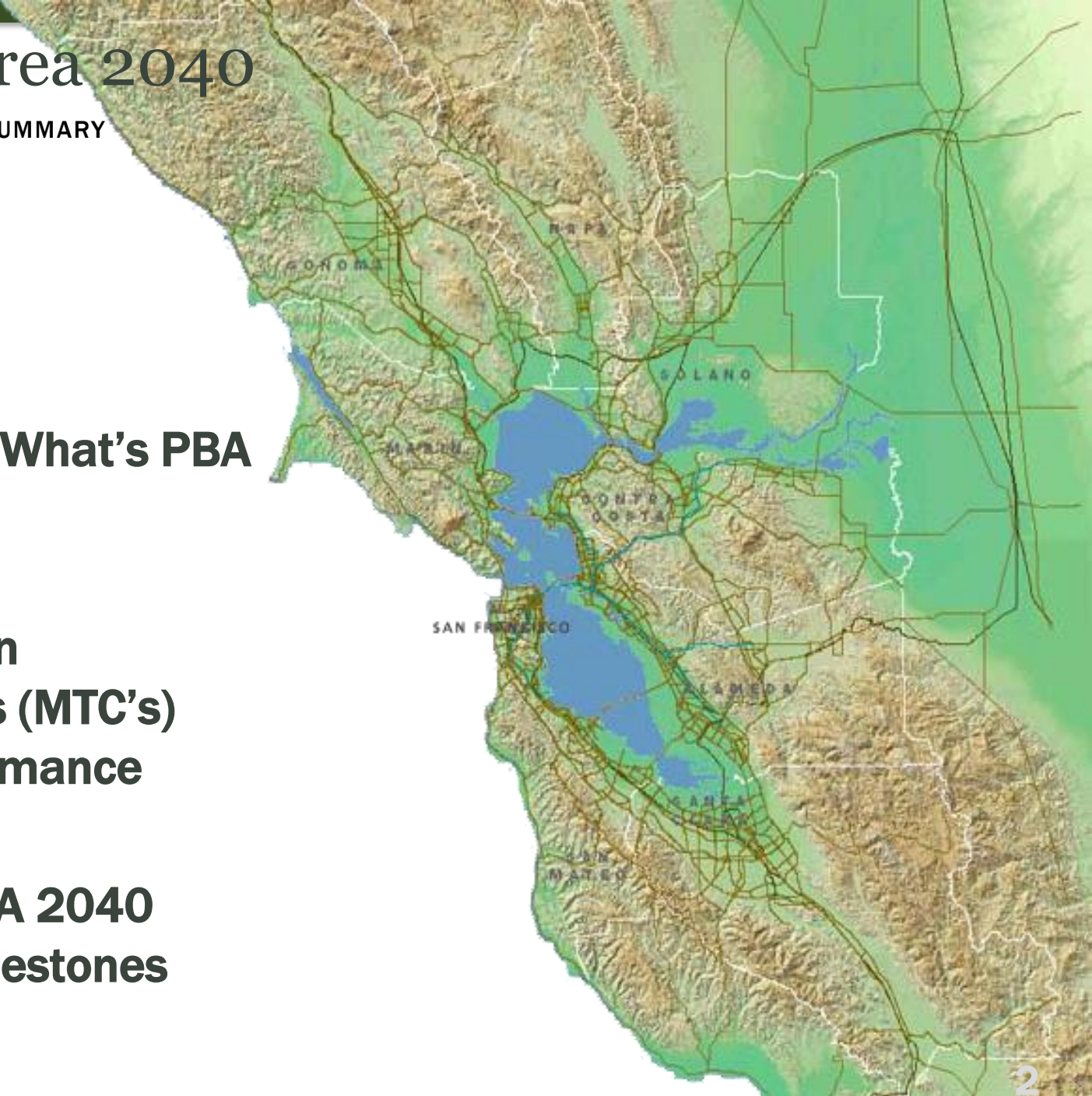
April 27, 2016

Plan Bay Area 2040

PLAN BAY AREA 2040 > SUMMARY

Today's Update:

- ▶ **Quick Recap: What's PBA 2040?**
- ▶ **Metropolitan Transportation Commission's (MTC's) project performance evaluation**
- ▶ **Upcoming PBA 2040 activities/ milestones**

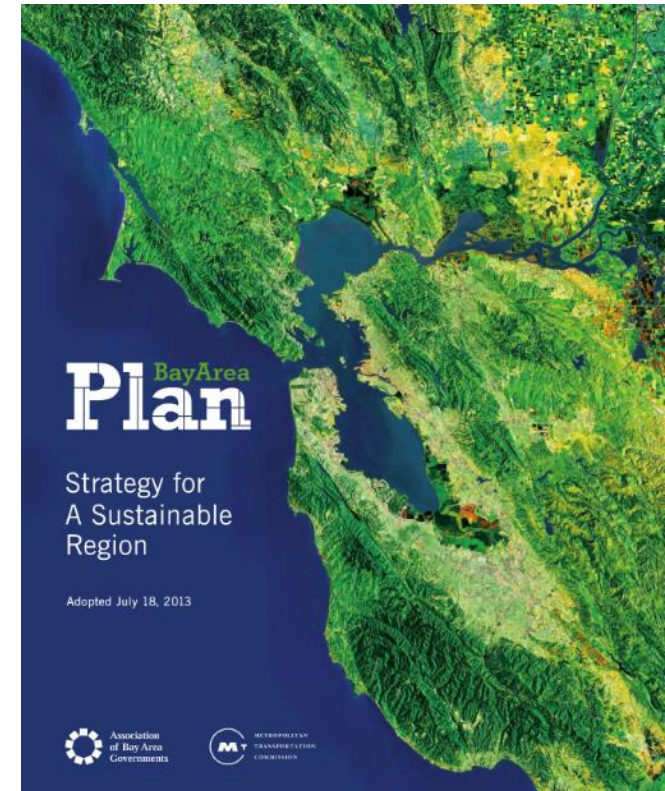


What is Plan Bay Area 2040?



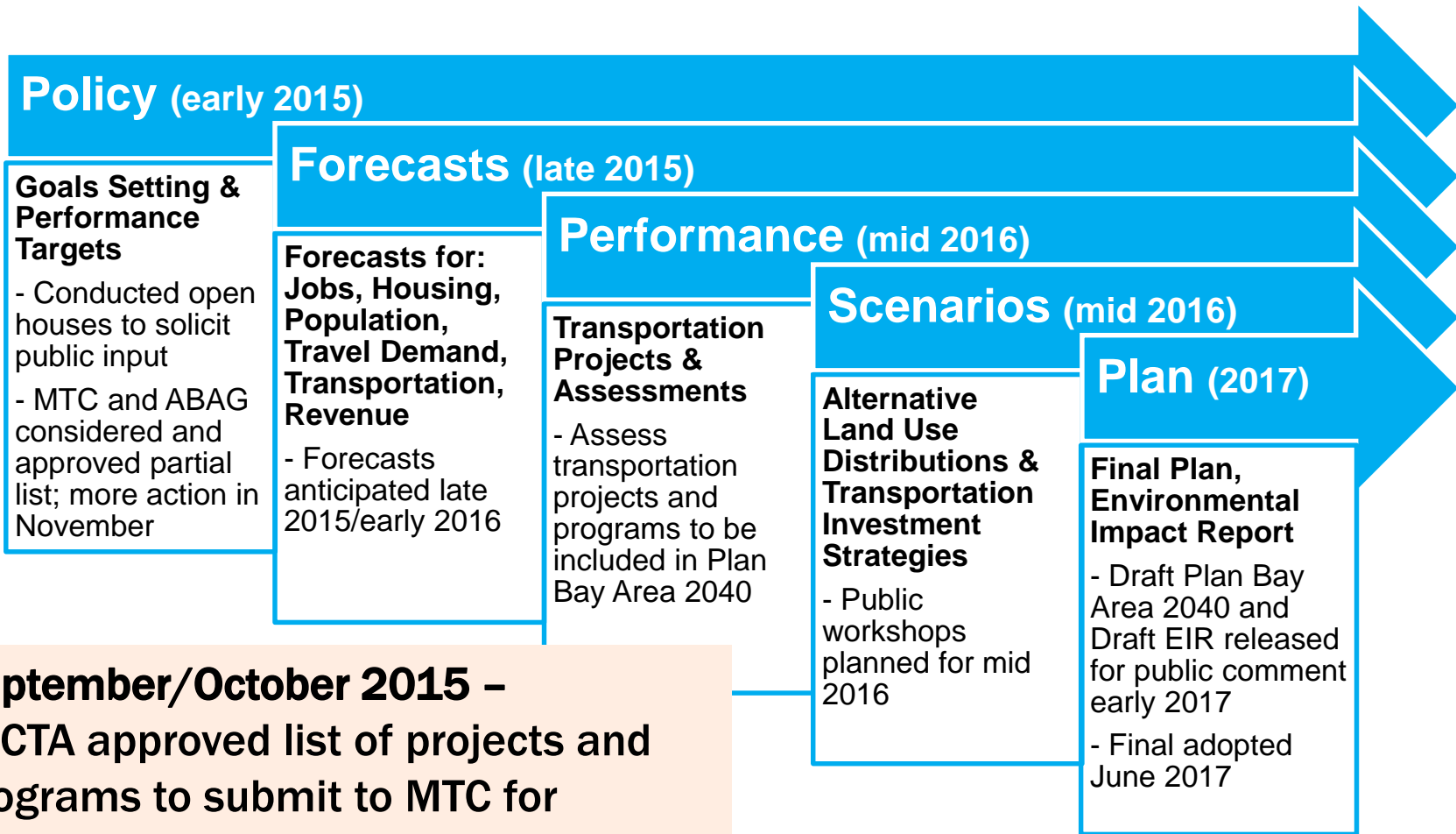
PLAN BAY AREA 2040 > SUMMARY

- ▶ **Blueprint for the region's transportation investment for the 9 Bay Area counties through 2040**
- ▶ **Regional strategy to meet greenhouse gas reduction targets**
- ▶ **Plan to accommodate the need for new growth**



Plan Bay Area 2040 Timeline

PLAN BAY AREA 2040 > SUMMARY



September/October 2015 – SFCTA approved list of projects and programs to submit to MTC for consideration for inclusion in PBA 2040

Investment Performance Assessment

PLAN BAY AREA 2040 > PROJECT PERFORMANCE ASSESSMENT



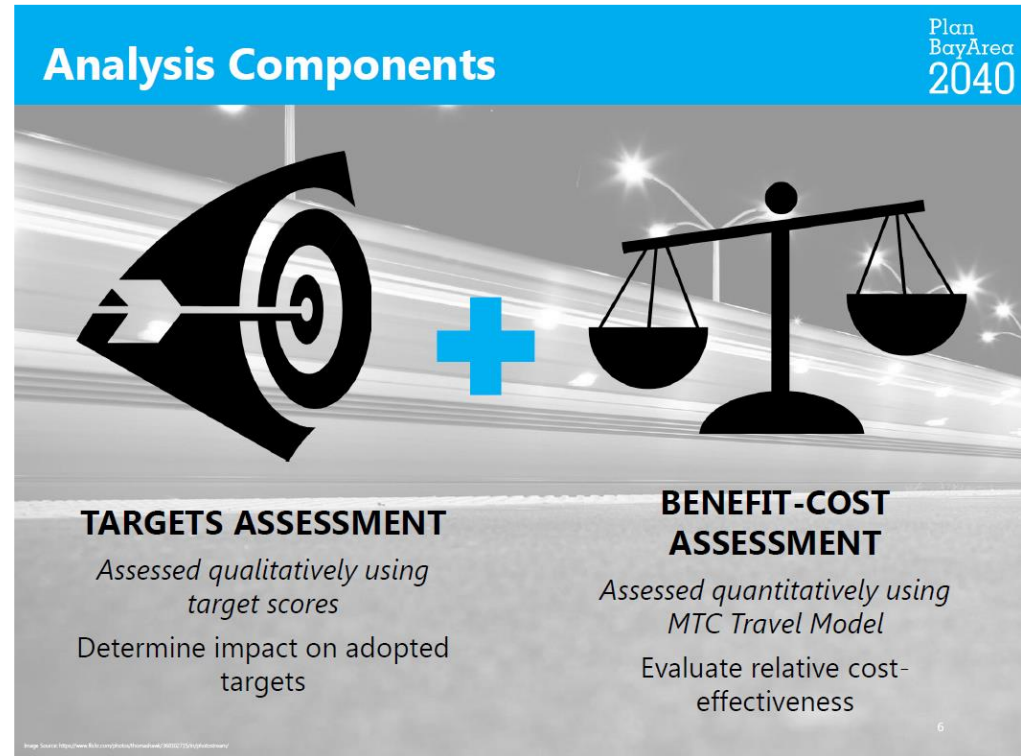
- ▶ **Projects - evaluate only largest capacity increasing projects that are seeking discretionary revenue**

- ▶ **Doesn't include:**

- ▶ **Projects under \$100 million**
- ▶ **Programmatic categories**
- ▶ **Committed projects**

- ▶ **Purpose: Identify outliers – both high and low performers**

- ▶ **High – Eligible for regional discretionary funding**
- ▶ **Low – Have to justify why to include in PBA 2040**

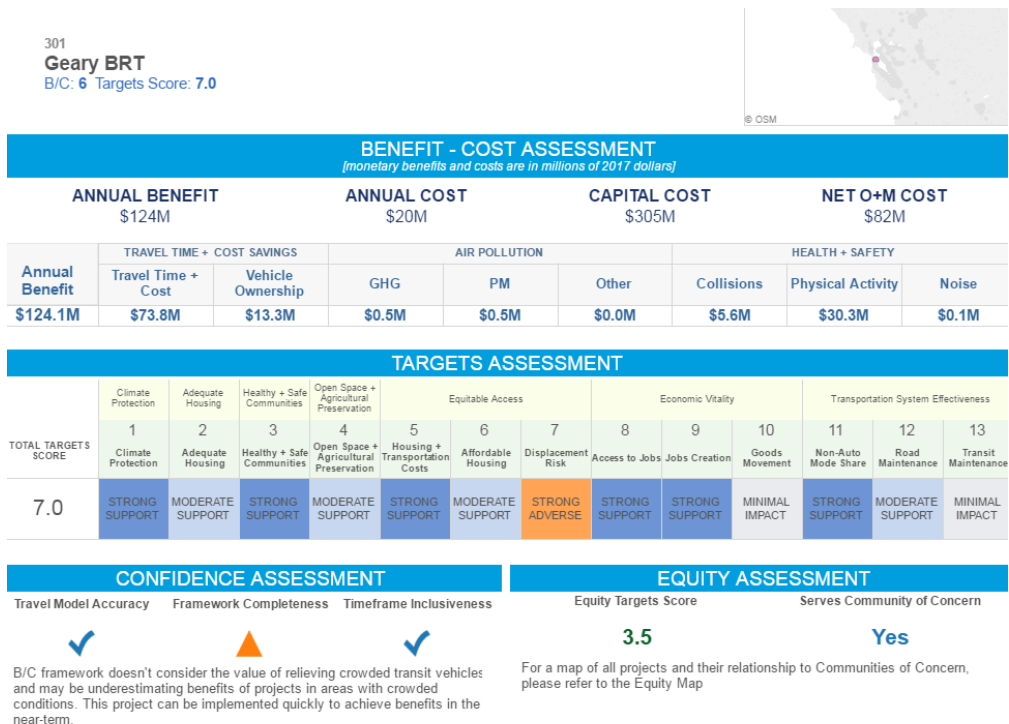


Benefit-Cost Assessment

PLAN BAY AREA 2040 > PROJECT PERFORMANCE ASSESSMENT



- ▶ **Benefits modeled**
 - ▶ **Travel time and cost savings**
 - ▶ **Vehicle ownership savings**
 - ▶ **Air pollution reduction**
 - ▶ **Reduced collisions**
 - ▶ **Increase in physical activity**
 - ▶ **Decrease in noise**
- ▶ **Costs (annualized over the life of the plan)**
 - ▶ **Capital costs**
 - ▶ **Operating costs**



<http://metropolitantransportationcommission.github.io/performance/>

Targets Assessment

PLAN BAY AREA 2040 > PROJECT PERFORMANCE ASSESSMENT



TARGETS ASSESSMENT

Assessed qualitatively using target scores

Plan
BayArea
2040



Climate Protection



Affordable Housing



Non-Auto Mode Share



Adequate Housing



Displacement Risk



Road State of Good Repair



Healthy & Safe Communities



Access to Jobs



Transit State of Good Repair



Open Space & Agricultural Preservation



Job Creation



Goods Movement



Housing & Transportation Costs

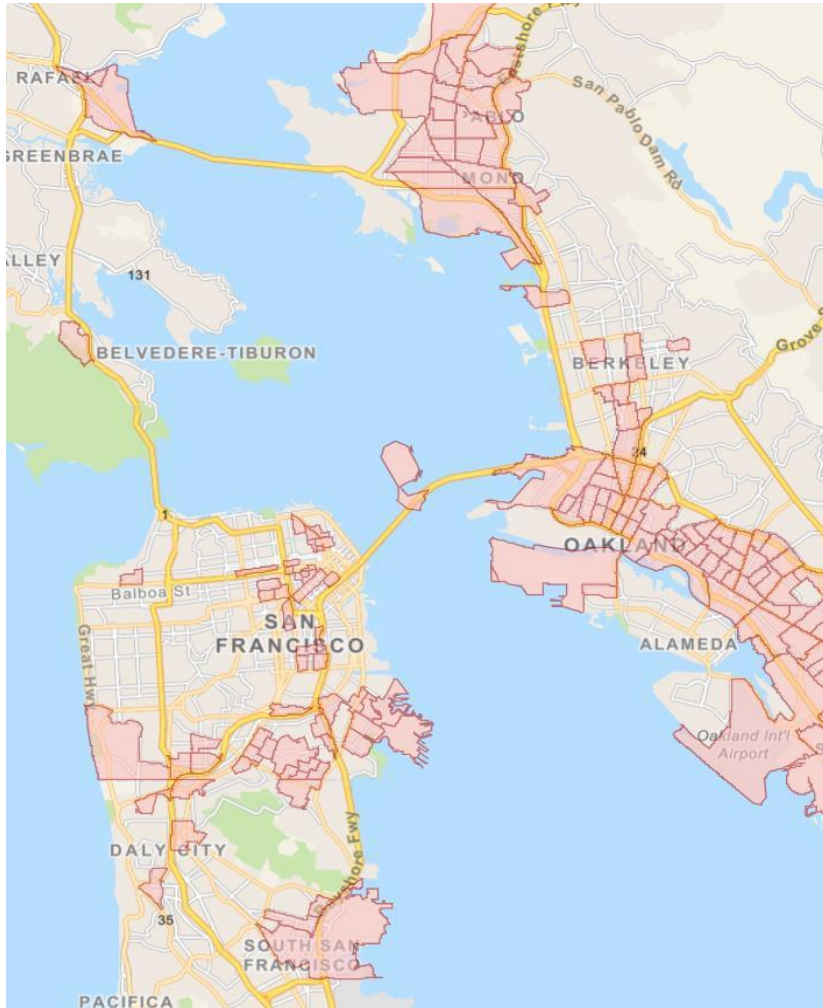
Maximum score:

13

if the project supports all 13 targets strongly

Project-Level Equity Assessment

PLAN BAY AREA 2040 > PROJECT PERFORMANCE ASSESSMENT



- ▶ **Equity Target Score**
 - ▶ **Health benefits and burdens**
 - ▶ **Transportation and housing cost**
 - ▶ **Share of affordable housing**
 - ▶ **Displacement risk**
 - ▶ **Access to jobs**
 - ▶ **Job creation**
- ▶ **Relationship to Communities of Concern**

Problematic Displacement Risk Target

PLAN BAY AREA 2040 > PROJECT PERFORMANCE ASSESSMENT



- ▶ **“Share of low- and moderate- income renters in Priority Development Areas that are at increased risk of displacement”**
 - ▶ Applied at the jurisdiction level, regardless of project type
 - ▶ 0 points – Minimal Impact, -0.5 points – Moderate Adverse Impact, -1 points – Strong Adverse Impact
- ▶ **ONLY San Francisco projects are identified as having a “strong adverse” impact**
- ▶ **Most projects have “moderate adverse”**

- ▶ **Recommendation:** Adjust target to “minimal impact” for jurisdictions that have adopted significant measures to address displacement issues

San Francisco Projects Evaluated (1 of 2)

PLAN BAY AREA 2040 > PROJECT PERFORMANCE ASSESSMENT



- ▶ **Congestion Pricing (with related transit improvements)**
 - ▶ **Treasure Island**
 - ▶ **Downtown San Francisco**
- ▶ **Freeway Management**
 - ▶ **US 101 HOV lanes in San Mateo and San Francisco**
 - ▶ **Express lanes on US 101 in San Mateo and San Francisco**
- ▶ **Complete Streets/Bike/Pedestrian**
 - ▶ **Better Market Street (includes transit)**
 - ▶ **Southeast Waterfront Transportation Improvements (includes transit)**
 - ▶ **Bay Bridge West Span Bike Path**

San Francisco Projects Evaluated (2 of 2)

PLAN BAY AREA 2040 > PROJECT PERFORMANCE ASSESSMENT



- ▶ **Transit efficiency and operations improvements**
 - ▶ **Muni Forward**
 - ▶ **Muni Service Expansion**
 - ▶ **BART Metro Program**
 - ▶ **Caltrain Modernization (e.g. electrification) and Service Expansion**
 - ▶ **Bay Bridge Express Bus Contraflow Lane**
- ▶ **Transit expansion**
 - ▶ **Geary Bus Rapid Transit (BRT)**
 - ▶ **M-Line/19th Avenue Core Capacity Project**
 - ▶ **Downtown Extension of Caltrain/High Speed Rail**
 - ▶ **Geneva BRT and Corridor Improvements (includes interchange)**
 - ▶ **New ferry service to Redwood City, Berkeley, Alameda Point**

State of Good Repair Evaluation

PLAN BAY AREA 2040 > PROJECT PERFORMANCE ASSESSMENT



- ▶ **Public Transit Maintenance**
 - ▶ Rail operators
 - ▶ Bus operators
- ▶ **Local Streets and Roads Maintenance**
 - ▶ Preserve conditions
 - ▶ Ideal conditions
- ▶ **Highway Pavement Maintenance**
 - ▶ Preserve conditions
 - ▶ Ideal conditions

MTC's Conclusions

PLAN BAY AREA 2040 > PROJECT PERFORMANCE ASSESSMENT



- ▶ **Top priority is maintaining regional transit infrastructure**
- ▶ **Highly used transit systems and the highway system are backbone of the region**
- ▶ **Projects in chronically congested corridors provide biggest bang per buck**
- ▶ **Congestion pricing and road efficiency projects outperform road expansion projects**
- ▶ **All highest performing projects increase access to Communities of Concern**

San Francisco Project Performance

PLAN BAY AREA 2040 > PROJECT PERFORMANCE ASSESSMENT



- ▶ **Projects performed much better in Target assessment than Benefit-Cost assessment**
- ▶ **San Francisco projects performed significantly worse than prior plan but still have many high performers**

2013 Plan Bay Area High Performers:

PROJECT	Quantitative Benefit/Cost ratio	Qualitative (out of 10)
1 BART Metro Program	> 60	8.5
2 Treasure Island Congestion Pricing	59	4.0
3 Congestion Pricing Cordon Pilot	45	6.0
4 AC Transit Grant—MacArthur BRT	18	5.5
5 Freeway Performance Initiative	16	4.0
6 ITS Improvements in San Mateo Co.	16	4.0
7 ITS Improvements in Santa Clara Co.	16	4.0
8 Irvington BART Station	12	5.5
9 SFMTA Transit Effectiveness Project	11	7.5
10 Caltrain Electrification and six trains per hour service	5	7.5
11 BART to San Jose, Phase 2	5	7.0
12 Van Ness Avenue BRT	6	6.5
13 Better Market Street	6	6.0

Source: Metropolitan Transportation Commission

Plan Bay Area 2040 High Performers (estimated):

BART Metro

Treasure Island Congestion Pricing

Downtown Congestion Pricing

Caltrain Modernization/Downtown Extension

NEW - Geary BRT

NEW - M-Line/19th Avenue Core Capacity Project

San Francisco Project Performance

PLAN BAY AREA 2040 > PROJECT PERFORMANCE ASSESSMENT



San Francisco low performers:

- ▶ **Bay Bridge West Span Pathway**
- ▶ **US 101 HOV lanes in San Mateo and San Francisco**
- ▶ **Express lanes on US 101 in San Mateo and San Francisco**
- ▶ **Bay Bridge Express Bus Contraflow Lane**
- ▶ **San Francisco - Redwood City Ferry**
- ▶ **Southeast Waterfront Transportation Improvements***
- ▶ **Geneva BRT and Corridor Improvements***

***These projects have low benefit-cost scores, but medium performance target scores.**

Why Low Performance?

PLAN BAY AREA 2040 > PROJECT PERFORMANCE ASSESSMENT



- ▶ **MTC's model significantly underestimates benefits of San Francisco projects**
 - ▶ **Underestimates Muni trips by 25%**
 - ▶ **Overestimates trips on AC Transit (40%) and VTA (105%)**
- ▶ **No benefits calculated for:**
 - ▶ **Reducing transit crowding**
 - ▶ **Improving transit reliability**
 - ▶ **Safety improvements for walking, biking, transit**
- ▶ **Projects have been bundled, making costs higher and target performance lower**
 - ▶ **Geneva BRT and Corridor Improvements (includes interchange)**
 - ▶ **US 101 HOV and Express Lanes (includes San Mateo segment)**
- ▶ **"Transit First" projects get dinged for dis-benefiting drivers**
- ▶ **All SF projects dinged for displacement risk target**

Requests Submitted to MTC

PLAN BAY AREA 2040 > PROJECT PERFORMANCE ASSESSMENT



- ▶ **Weight performance targets equally with benefit-cost analysis when identifying high and low performers**
 - ▶ **Mitigates biases in benefit-cost analysis**
 - ▶ **Targets reflect a wider range of PBA 2040 goals and objects**
- ▶ **Redefine displacement risk target to “minimal impact” for jurisdictions that have implemented anti-displacement measures**
 - ▶ **Provides an incentive and rewards desired actions**
- ▶ **If possible, fix problems with the way the model treats San Francisco projects**
 - ▶ **We provided suggested technical fixes for short and long term**

What's Next? (Estimated Schedule)



PLAN BAY AREA 2040 > NEXT STEPS

March and April 2016	MTC releases draft performance results, project sponsors review and comment
April CAC / May Plans and Programs	SFCTA agenda item on results of project performance assessment
June 14, 2016 6:30-8:30pm	Plan Bay Area 2040 San Francisco Open House Hotel Whitcomb (1231 Market St)
May CAC / June Plans and Programs	SFCTA agenda item on link between housing policy and transportation investment
June 2016	ABAG releases draft scenario performance assessment, MTC approves final project performance assessment
June CAC / July Plans and Programs	SFCTA agenda item evaluating progress toward meeting PBA 2040 goals and objectives and preferred scenario input
July 2016	MTC/ABAG release draft preferred scenario
September 2016	MTC/ABAG adopt preferred transportation investment and land use scenario
September 2016 through June 2017	MTC/ABAG perform environmental review of preferred scenario
June 2017	MTC/ABAG adopt Plan Bay Area 2040

Questions?

For more information:

Amber Crabbe, Assistant Deputy Director

amber.crabbe@sfcta.org

www.sfcta.org/rtp



SAN FRANCISCO COUNTY TRANSPORTATION AUTHORITY