

Prop K Half-Cent Transportation Sales Tax Requests

Citizen Advisory Committee
Agenda Item 8



SAN FRANCISCO COUNTY TRANSPORTATION AUTHORITY

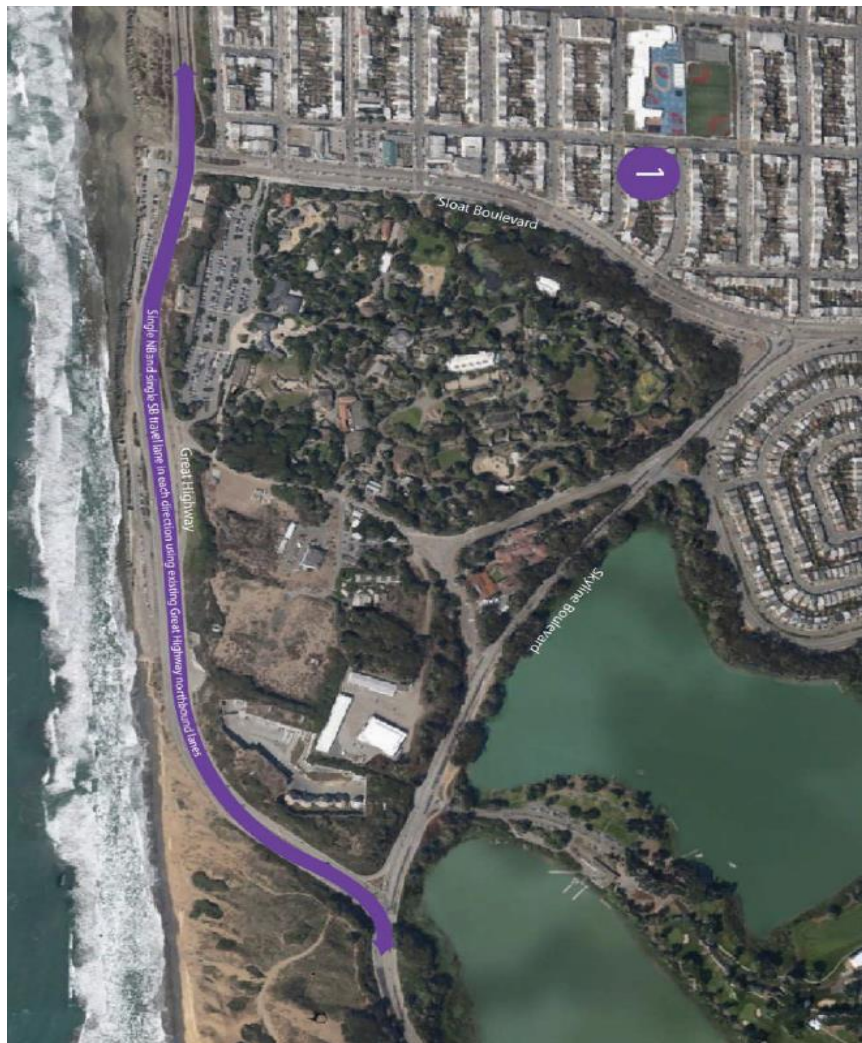
May 25, 2016



Rail Grinding (SFMTA) Construction

- ▶ **Prop K Request: \$1,036,400 matches \$4,440,600 in federal funds**
- ▶ **Muni Metro subway, from Castro to Embarcadero stations**
- ▶ **Reshape rails to optimal profile to:**
 - ▶ **Extend useful life of rail by 20%**
 - ▶ **Prevent derailments**
 - ▶ **Reduce noise, improve ride quality**
- ▶ **SFMTA is developing operations plan to minimize service disruption**
- ▶ **Done by end of 2017, in anticipation of arrival of new light rail fleet**

Great Highway Reroute (SFPW) Design



- ▶ **Prop K Request: \$64,734 matches \$345,000 in federal funds**
- ▶ **Preferred option for restoration**
 - ▶ **Preserves roadway function**
 - ▶ **Converts 2 northbound lanes to single bi-directional lanes**
- ▶ **Supported by SPUR, California Coastal Commission, National Park Services**
- ▶ **\$3.3 million construction cost, funding from future Prop K and federal funds**
- ▶ **Open for use by Spring 2018**

Street Repair and Cleaning Equipment (SFPW)



- ▶ **Prop K Request: \$1,499,408**
- ▶ **Replace 5 air sweepers used for street cleaning**
 - ▶ **Exceeded useful lives**
 - ▶ **Will be out of compliance with state, regional air quality standards**
 - ▶ **Must be replaced this fiscal year**
- ▶ **Finance cost-neutral Prop K Strategic Plan amendment**
 - ▶ **Advances funds as requested to meet deadline for compliance**

Public Sidewalk Repair (SFPW) Construction



- ▶ **Prop K Request: \$537,494**
- ▶ **Repair sidewalk locations around City street trees**
- ▶ **Leverages state funds**
 - ▶ **Total cost \$786,375**
 - ▶ **221 locations repaired in total**
- ▶ **High priority locations**
 - ▶ **Accidents, complaints, high lift and excessive damage**
- ▶ **All work done by June 2017**

Tree Planting and Maintenance (SFPW)



- ▶ **Prop K request: \$1,092,025 leverages over \$5.1 million in state and local funds**
 - ▶ **Replace 375 street trees**
 - ▶ **Establish 375 young trees**
 - ▶ **Maintain 814 mature trees**
- ▶ **All locations in public rights-of-way maintained by DPW**
- ▶ **All work done by June 2017**

Geneva-San Jose Intersection Study [NTIP Planning] (SFMFTA)



- ▶ **Prop K Request: \$150,000**
- ▶ **Vicinity of Geneva and San Jose intersection**
- ▶ **Develop conceptual designs for near, medium, long-term recommendations**
- ▶ **Safety and transit access improvements including passenger access to Muni's M-Ocean View**
- ▶ **Will be coordinated with various other projects in vicinity**
- ▶ **Final report by July 2017**



Second Street Improvement(SFPW)



- ▶ **Prop K Request: \$1,549,584, leveraging \$9.2 million in One Bay Area Grant funds for construction**
- ▶ **Complete Streets:**
 - ▶ **sidewalk widening**
 - ▶ **buffered and raised cycletracks**
 - ▶ **bus stop improvements**
 - ▶ **lane reduction**
 - ▶ **new traffic signal at South Park**
 - ▶ **landscaping**
 - ▶ **pedestrian lighting – if funds available**
- ▶ **Construction start by January 2017, open for use by June 2018**

Neighborhood Transportation Improvements Program (NTIP) Support (SFCTA/SFMTA)



- ▶ **Prop K Request: \$150,000**
 - ▶ **\$75,000 SFCTA, \$75,000 SFMTA**
- ▶ **NTIP support includes:**
 - ▶ **Assist with commissioners' efforts to identify potential NTIP planning and capital projects**
 - ▶ **Develop scope, schedule and budget for allocation of NTIP grants**
 - ▶ **Provide ongoing support for implementation**

Questions?



SAN FRANCISCO COUNTY TRANSPORTATION AUTHORITY