

# Prop K Half-Cent Transportation Sales Tax Requests

Citizen Advisory Committee  
Agenda Item 6



**SAN FRANCISCO COUNTY TRANSPORTATION AUTHORITY**

**June 22, 2016**

# Van Ness Improvements Including Bus Rapid Transit (SFMTA) - Construction

- ▶ Prop K request: \$27.3 million, total cost \$285.5 million
- ▶ Dedicated transit-only lane, low-floor vehicles and quality stations
- ▶ Overhead contact system
- ▶ Transit signal priority
- ▶ Safety enhancements
- ▶ Street repaving, landscaping
- ▶ Utility upgrades - sewer, water, lighting, and green infrastructure
- ▶ Open for use by March 2019





# Twin Peaks Tunnel Trackway Improvements (SFMTA) - Construction

- ▶ Prop K request: \$4.15 million, commitment to allocate \$3.55 million in FY 17/18
- ▶ Total cost \$48.6 million
- ▶ Twin Peaks Tunnel from Castro to West Portal
- ▶ Replacements and upgrades for track, switches, lighting, fire suppression, drainage, seismic reinforcement
- ▶ Will increase train speeds from 25 MPH to 50 MPH, decreasing travel time by 2.8 minutes per passenger
- ▶ Work to be done over 21 weekends (excludes festivals)
  - ▶ Tunnel to be closed for construction
  - ▶ SFMTA to provide bus bridge during closures
- ▶ Complete by Sept 2017

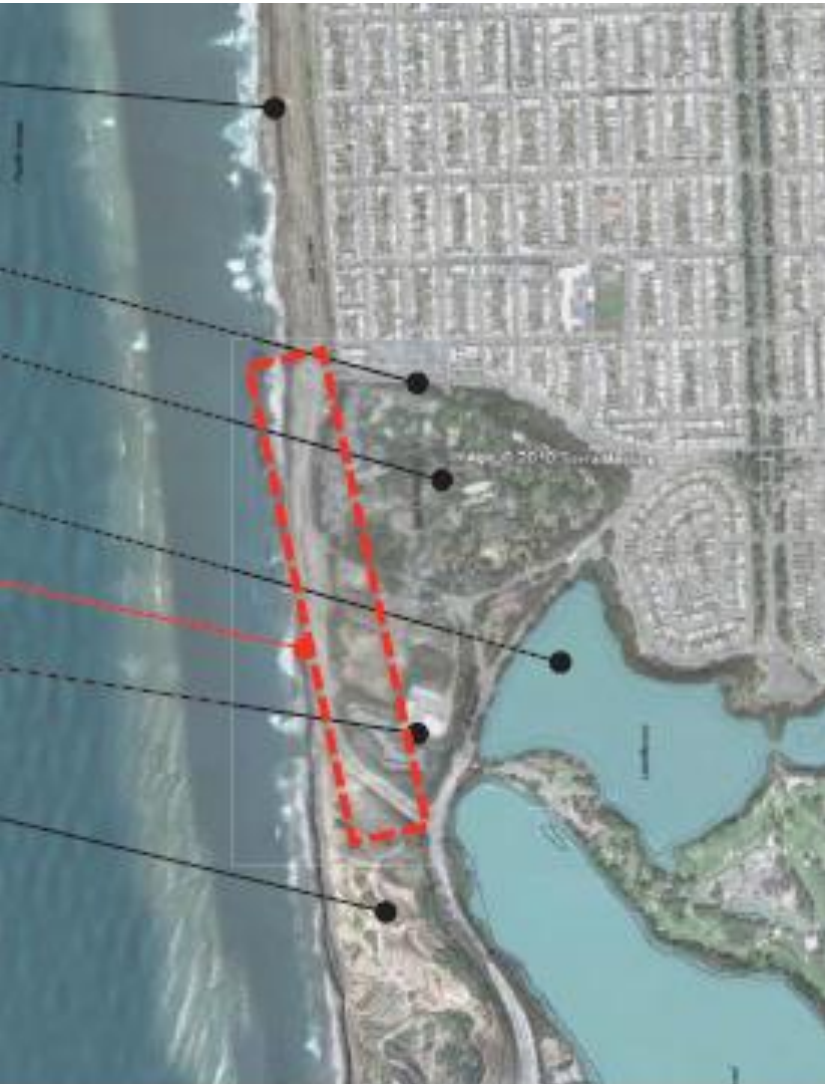


# Paratransit (SFMTA) - Operations



- ▶ **Prop K Request: ~\$10.19 million, total cost \$25.9 million**
- ▶ **Annual funding for paratransit broker contract**
- ▶ **Services delivered through taxis, city-owned vans and community center group vans**
- ▶ **First year of new five contract - 15% cost increase primarily due to labor costs**
- ▶ **Request includes a Prop K Strategic Plan amendment to advance funds**

# South Ocean Beach Multi-Use Trail (SFPW) - Design



- ▶ **Prop K Request: ~\$5,300**  
Matches \$321,500 in federal funds
- ▶ **Commit to allocate: ~\$260,000** to match \$1.3 million in federal funds for construction
- ▶ **Replace southbound lanes of Great Highway between Sloat and Skyline** with a multi-use trail and gravel path
- ▶ **New 50-space parking lot**
- ▶ **Re-vegetation with native plants**
- ▶ **Open for use by March 2019**

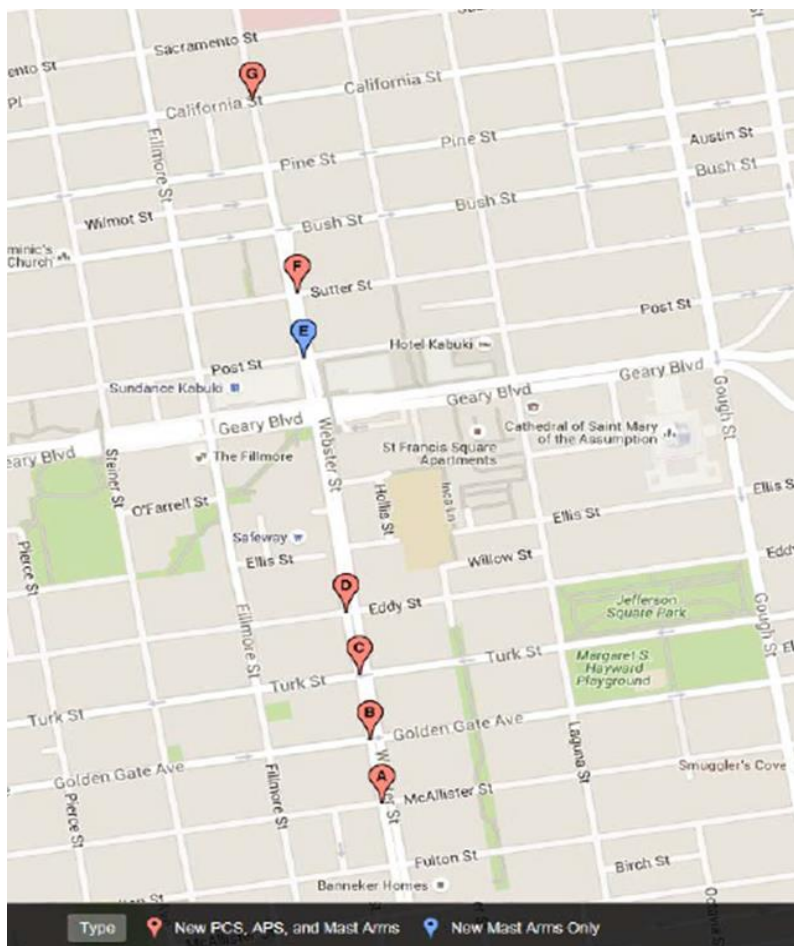
# New Signals Contract 63 (SFMTA) - Construction



- ▶ Prop K Request: \$1.7M
- ▶ 6 new signals and 2 flashing beacons located at 8 unsignalized intersections
- ▶ All new signals include PCS and APS indicators and buttons
- ▶ Other intersection improvements include new controllers, conduit, wiring, poles, and curb ramps
- ▶ Complete by Sept. 2017



# Webster Street Pedestrian Signals (SFMTA) - Construction



- ▶ Prop K request: ~\$1.36M
- ▶ Upgrade existing traffic signals at 7 locations on Webster Street
- ▶ New PCS for 6 locations
- ▶ WalkFirst High Injury Corridor
- ▶ Complete by Sept. 2017

# Bicycle Facility Maintenance (SFMTA) - Construction



- ▶ Prop K request: \$150,000
- ▶ Restriping, bike boxes and replacing delineator posts
- ▶ Potential locations: Market St, Monterey Blvd, Cesar Chavez, the Wiggle, 14<sup>th</sup>/Folsom
- ▶ Complete by winter 2018



# Local-Track Application-Based Traffic Calming Program (SFMTA) - Planning



- ▶ Prop K request: **\$213,525**
- ▶ Fourth cycle of annual program
- ▶ Evaluate and prioritize up to **100** applications
- ▶ Project development of up to **50** locations
  - ▶ Mostly speed humps
  - ▶ A few complex measures, e.g. chicanes
- ▶ Planning complete by **June 2017**; open for use by **December 2017**

# Glen Park Phase 2 (SFMTA) - Planning

- ▶ Prop K request: \$260,000
- ▶ Pedestrian and traffic calming improvements near Glen Park BART station at Bosworth/Arlington and Bosworth/Lyell
- ▶ Includes community outreach, feasibility analysis, preliminary engineering, design survey
- ▶ Preferred designs by late 2018



# South Park Traffic Calming (NTIP Capital) (SFPW) - Construction



- ▶ Prop K request: \$30,000, leverages \$2.9M in park bond funds, other local funds
- ▶ Prop K to fund traffic calming elements of South Park Improvement project:
  - ▶ Many drivers use South Park as a short cut to the Bay Bridge
  - ▶ 3 bulbouts and special paving at gateway entrances to park
- ▶ Complete by March 2017



# 66-Quintara Reconfiguration Study [NTIP Planning] (SFMTA)



- ▶ Prop K request: \$100,000
- ▶ Evaluate underutilized MUNI routes, including 66-Quintara to strengthen West Side's access to transit hubs
- ▶ Study recommended by the SFCTA's Strategic Analysis Report "Improving West Side Transit Access"
- ▶ Complete by Aug. 2017

Questions?



SAN FRANCISCO COUNTY TRANSPORTATION AUTHORITY