

Plan Bay Area 2040 Update

Special Citizens Advisory Committee
Agenda Item 9



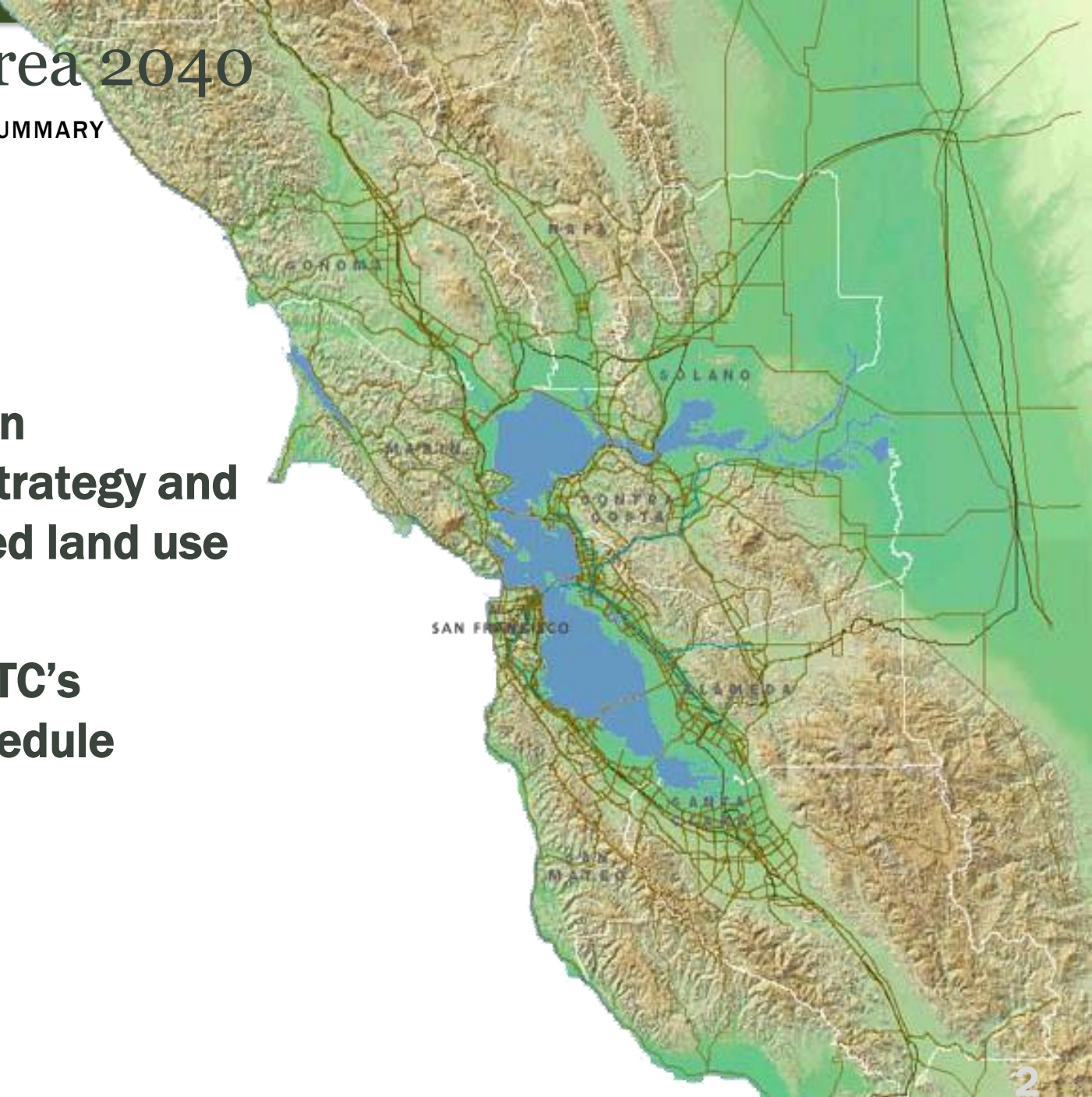
SAN FRANCISCO COUNTY TRANSPORTATION AUTHORITY
September 7, 2016

Plan Bay Area 2040

PLAN BAY AREA 2040 > SUMMARY

Today's Update:

- ▶ **MTC's draft transportation investment strategy and draft preferred land use scenario**
- ▶ **Update on MTC's adoption schedule**

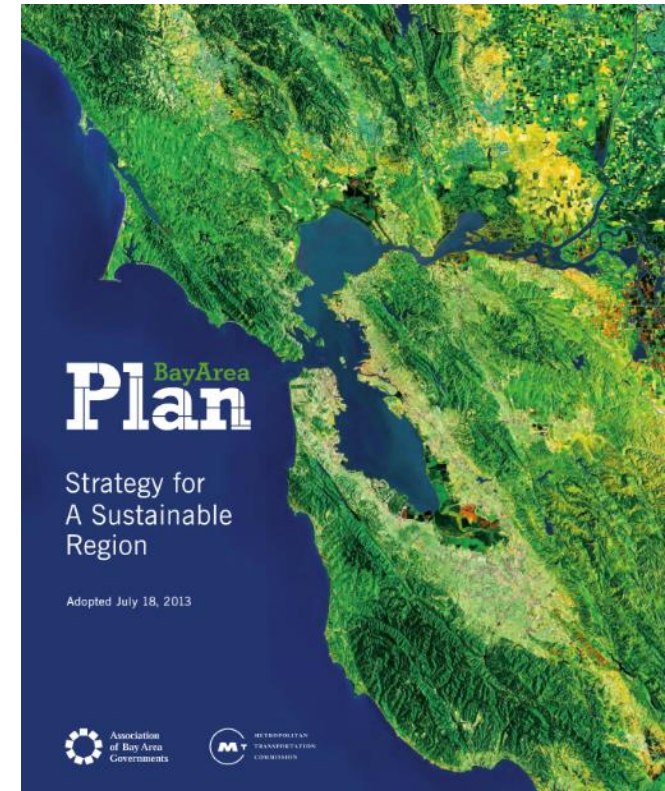


What is Plan Bay Area 2040?

PLAN BAY AREA 2040 > SUMMARY

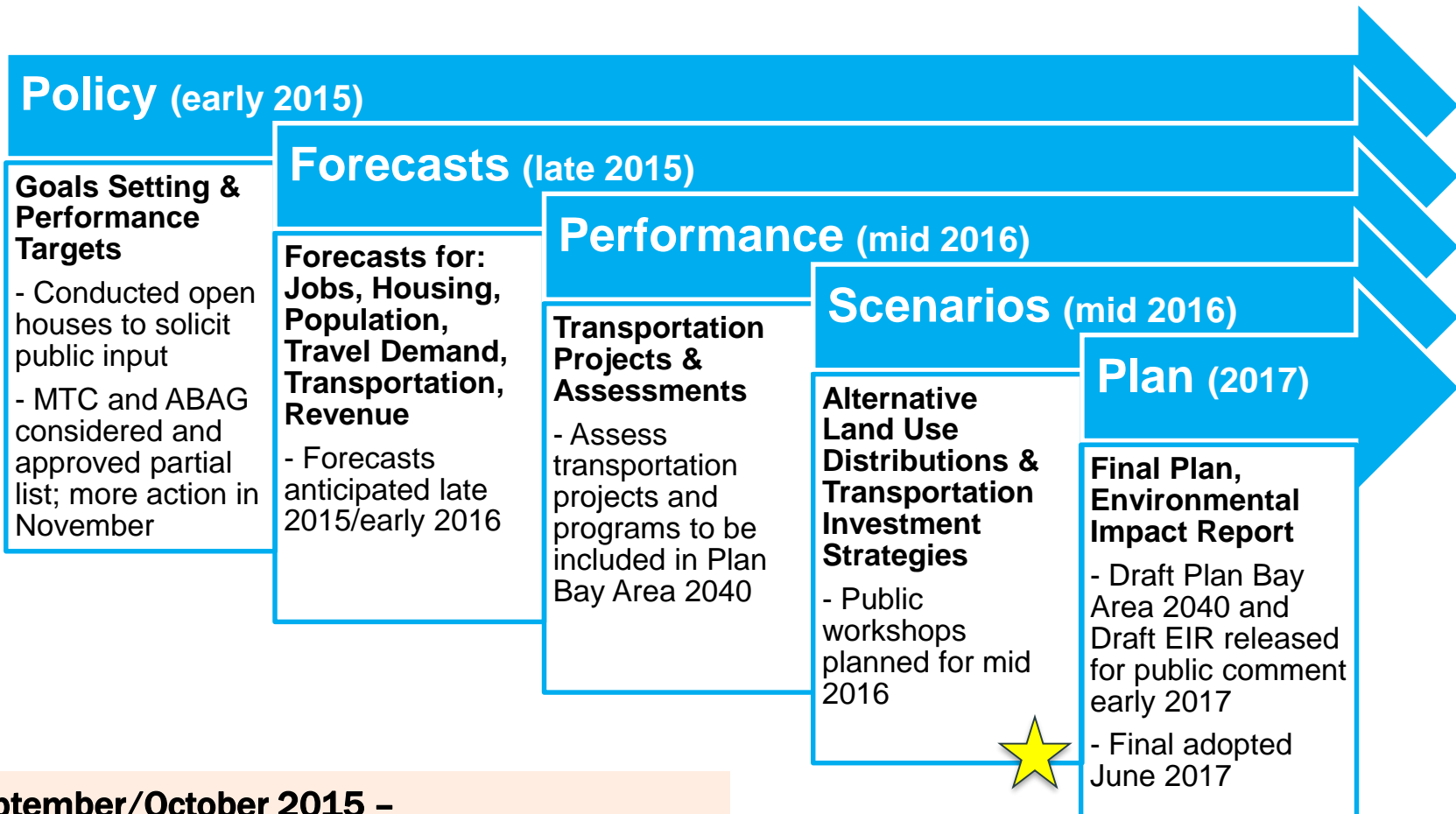


- ▶ **Blueprint for the region's transportation investment for the 9 Bay Area counties through 2040**
- ▶ **Regional strategy to meet greenhouse gas reduction targets**
- ▶ **Plan to accommodate the need for new growth**



Plan Bay Area 2040 Timeline

PLAN BAY AREA 2040 > SUMMARY



September/October 2015 –

SFCTA approved list of projects and programs to submit to MTC for consideration for inclusion in PBA 2040

September 2016 –

SFCTA works with MTC staff on the draft transportation investment scenario

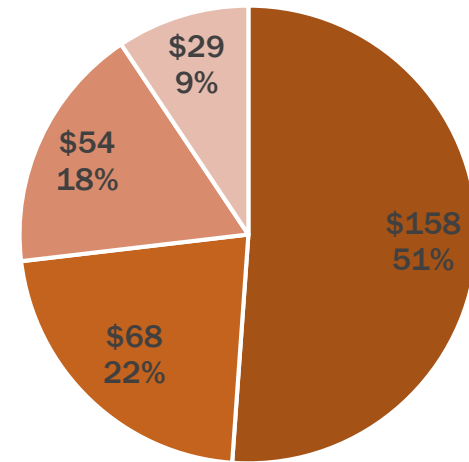
Draft Plan Bay Area 2040 Transportation Investment Strategy



PLAN BAY AREA 2040 > DRAFT TRANSPORTATION INVESTMENT STRATEGY

Plan Bay Area 2040 Revenue Sources	Total Funding	Regional Discretionary
Federal	\$29 billion	\$26.4 billion
State	\$48 billion	\$8.8 billion
Regional	\$42 billion	\$12.2 billion
Local	\$157 billion	\$12.6 billion
Anticipated/Other	\$14 billion	\$14 billion
2016 Transportation Ballot Measures	\$19 billion	-
Total 24 year revenue forecast	\$309 billion	\$74 billion

PBA 2040 Investments (Billions)



- Operate and Maintain - Transit
- Operate and Maintain - Roads/Freeways/Bridges
- Modernize
- Expand

► **Draft investment strategy includes San Francisco’s projects that need to be in the Plan, and directs regional discretionary funding to high-performing programs and projects**

Draft Plan Bay Area 2040 Transportation Investment Strategy



PLAN BAY AREA 2040 > DRAFT TRANSPORTATION INVESTMENT STRATEGY

- ▶ **More investment in Transit Core Capacity and Transit State of Good Repair**
 - ▶ **Core Capacity Investment Strategy shown at \$7 billion**
 - ▶ **Transit Operations and Maintenance at \$158 billion**
- ▶ **New revenue sources are included**
- ▶ **San Francisco's projects generally preformed well in the project performance analysis**

San Francisco Plan Bay Area 2040 High Performers:

BART Metro

Treasure Island Congestion Pricing

Downtown Congestion Pricing

Caltrain Modernization/Downtown Extension

Geary BRT

Rail and Bus Transit Rehabilitation and Maintenance

Draft Plan Bay Area 2040 Transportation Investment Strategy



PLAN BAY AREA 2040 > DRAFT TRANSPORTATION INVESTMENT STRATEGY

► Strategies for equity

Fund existing bus operations through 2040	\$62 billion
Fund bus service increases and transit improvements	\$5 billion
Fund Lifeline Program and County Access Initiatives	\$2 billion
Assume increases in inclusionary zoning within Priority Development Areas	

► Increases transit service by 7.5% over PBA 2013 levels including

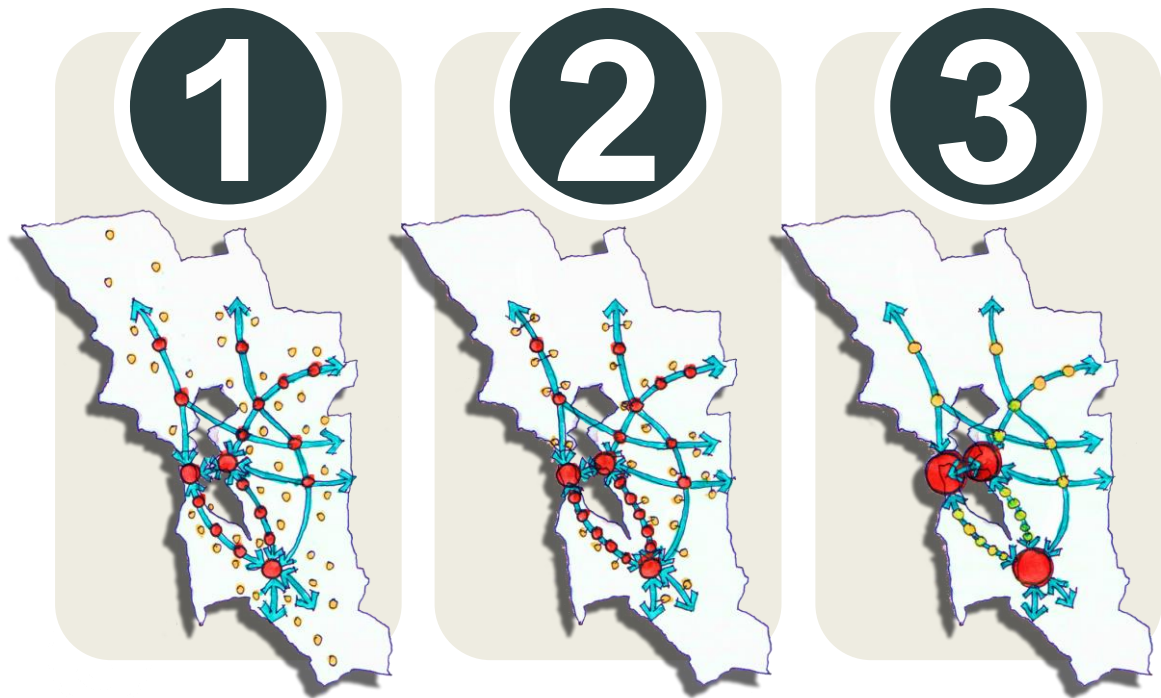
- 7.1% increase for SFMTA
- 2.6% increase for BART
- 16.5% increase for Caltrain

Draft Plan Bay Area 2040 Preferred Land Use Scenario - Process



PLAN BAY AREA 2040 > DRAFT LAND USE SCENARIO

- ▶ **The Draft Preferred Land Use Scenario was developed after a scenario planning process**
- ▶ **Three scenarios: Main Streets; Connected Neighborhoods; Big Cities**
- ▶ **Target performance scores; UrbanSim modeling; local plans; historic growth patterns; workshops held across the region; online engagement**



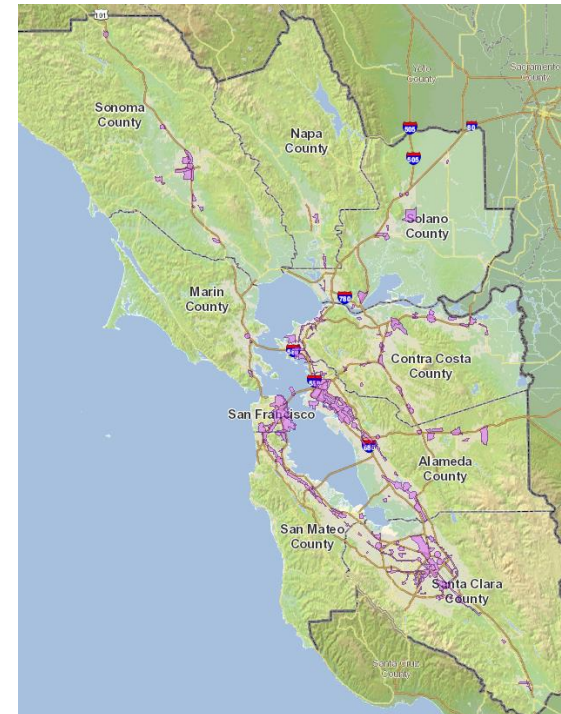
Draft Plan Bay Area 2040 Preferred Land Use Scenario



PLAN BAY AREA 2040 > DRAFT LAND USE SCENARIO

Bay Area	2010 Total	2013 Plan Bay Area Forecast	Plan Bay Area 2040 Forecast
Households	2,607,000	3,308,110	3,427,000
Households in PDAs	559,000	1,086,000	1,172,000
Employment	3,422,000	4,505,220	4,698,000
Employment in PDAs	1,433,000	2,123,000	2,094,000

- ▶ **The Draft Preferred Land Use Scenario keeps current urban growth boundaries and focuses development within PDAs, consistent with the 2013 Plan Bay Area**



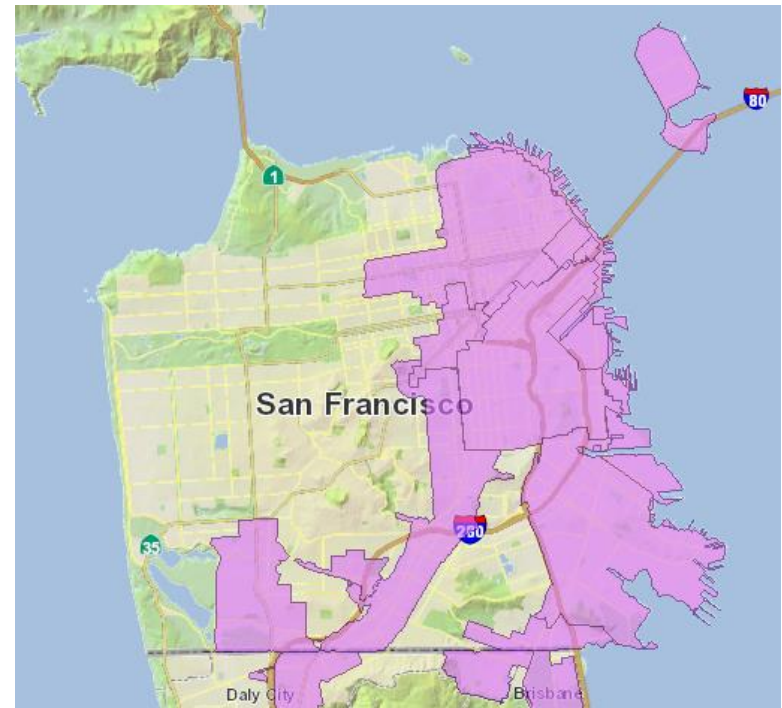
Draft Plan Bay Area 2040 Preferred Land Use Scenario



PLAN BAY AREA 2040 > DRAFT LAND USE SCENARIO

San Francisco	2010 Total	2013 Plan Bay Area Forecast	Plan Bay Area 2040 Forecast
Households	347,100	447,350	475,500
Households in PDAs	184,000	277,500	302,300
Employment	576,900	759,500	887,800
Employment in PDAs	473,800	633,740	765,000

- ▶ **The Draft Preferred Land Use Scenario includes more jobs and housing in San Francisco than the previous Plan Bay Area**
- ▶ **Still draft numbers final scenario to be adopted in November**



What's Next? (Estimated Schedule)



PLAN BAY AREA 2040 > NEXT STEPS

September 2016	MTC/ABAG release draft preferred land use scenario and transportation investment strategy
September 2016	ABAG meetings with planning directors on the draft preferred land use scenario
October 2016	Comments on draft preferred scenario are due (October 14)
November 2016	MTC/ABAG adopt revised preferred land use scenario and transportation investment strategy, begin CEQA review
November 2016 through June 2017	MTC/ABAG perform environmental review of preferred scenario
Spring 2017	MTC/ABAG release draft Plan and draft EIR
June 2017	MTC/ABAG adopt Plan Bay Area 2040

Questions?

For more information:

Michelle Beaulieu, Senior Transportation
Planner

Michelle.Beaulieu@sfcta.org

www.sfcta.org/rtp



SAN FRANCISCO COUNTY TRANSPORTATION AUTHORITY