

Alemany Interchange Improvement Study

Citizen Advisory Committee Agenda Item 7



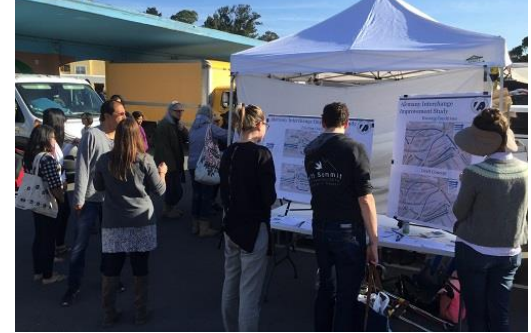
SAN FRANCISCO COUNTY TRANSPORTATION AUTHORITY

September 28, 2016

Alemanya Interchange Improvement- Summary



- Project Overview
- Proposed improvements
- Traffic analysis
- Implementation Plan
- Cost and funding Sources
- Upcoming outreach and project schedule



Alemany Interchange Improvement Study: Overview



- ▶ Improve the pedestrian and bicycle safety and accessibility to the Alemany Flea Market from nearby neighborhoods.

Phase 1 proposals:

- ▶ Road-diet on Alemany Boulevard from Putnam Avenue to Bayshore Boulevard
- ▶ Increase pedestrian space and reduce crossing distances with sidewalk extensions at Putnam Avenue and San Bruno Avenue intersections
- ▶ Extend existing Alemany Boulevard bike lanes to fill gap between Putnam Avenue and Bayshore Boulevard with buffered bike lanes and intersection improvements

Phase 2 proposals:

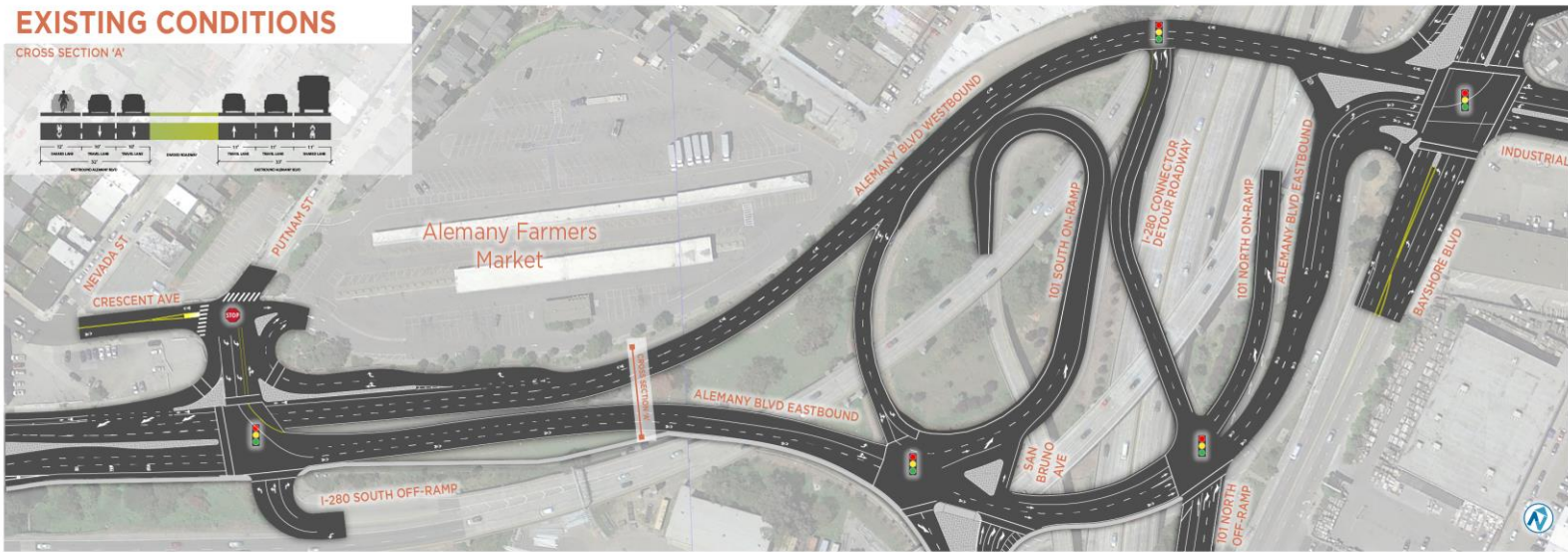
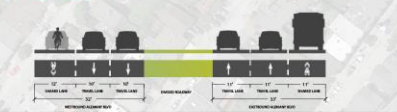
- ▶ Install a new multi-use path connecting between the Alemany Flea Market and the San Bruno Avenue intersection
- ▶ Install new crosswalks and pedestrian signals at both legs of the Alemany Boulevard crossing

Alemanya Interchange Improvement Study: Proposed Improvements



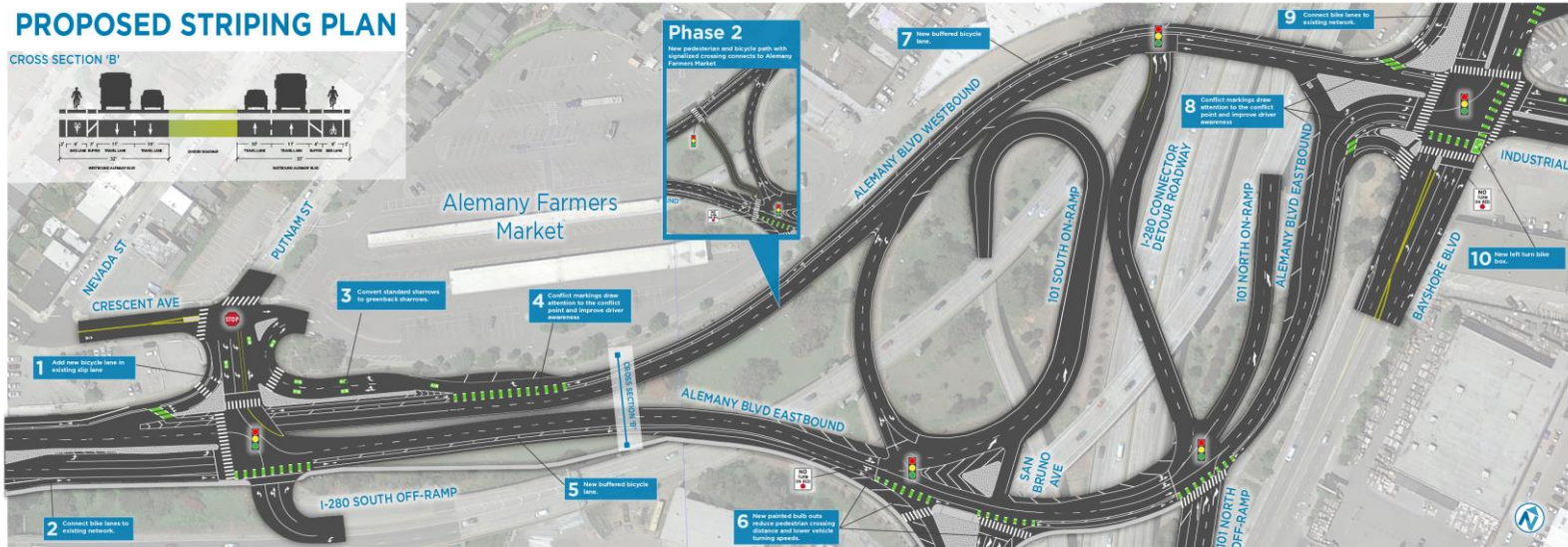
EXISTING CONDITIONS

CROSS SECTION 'A'

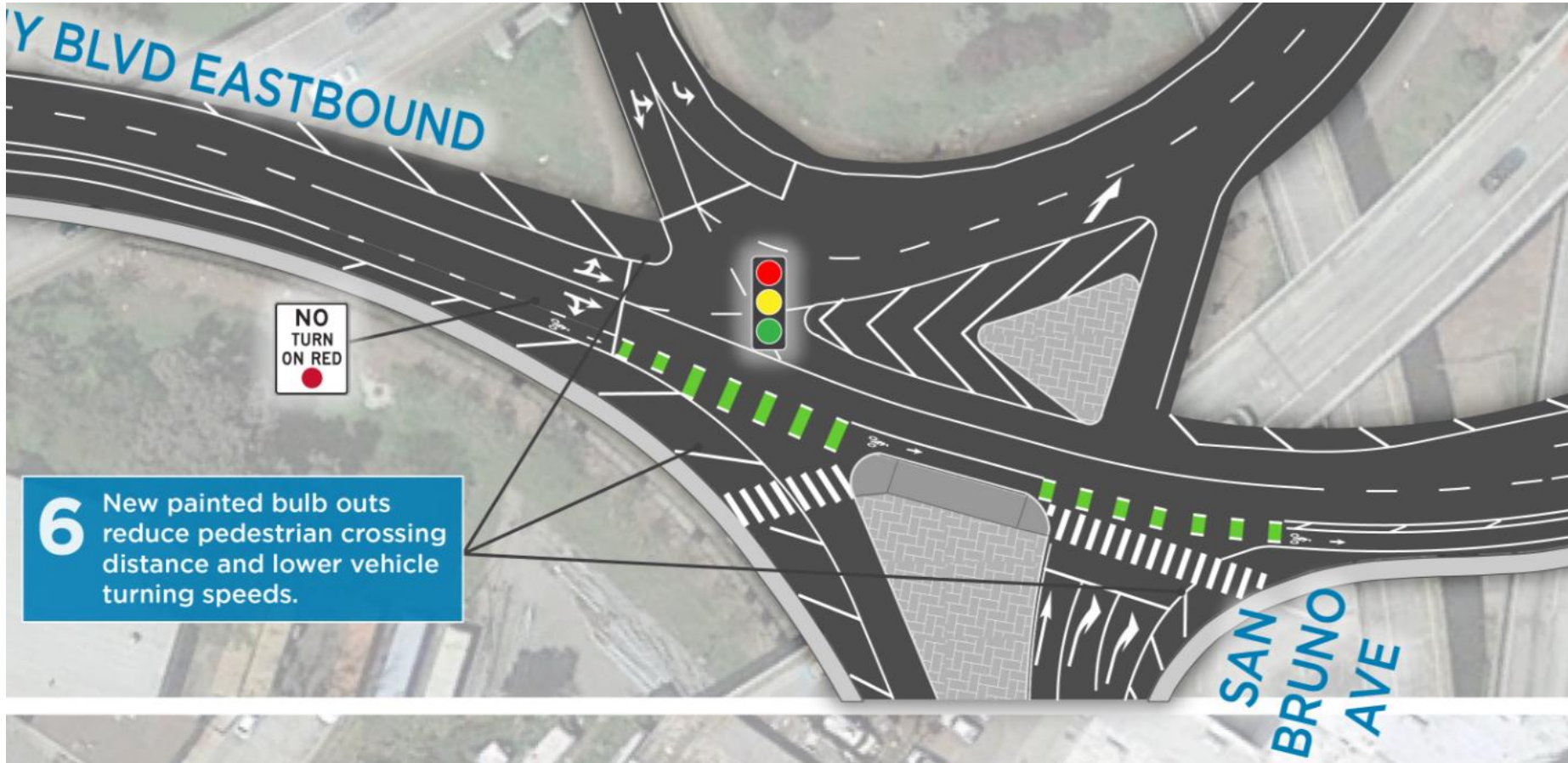


PROPOSED STRIPING PLAN

CROSS SECTION 'B'



Improvement Benefits

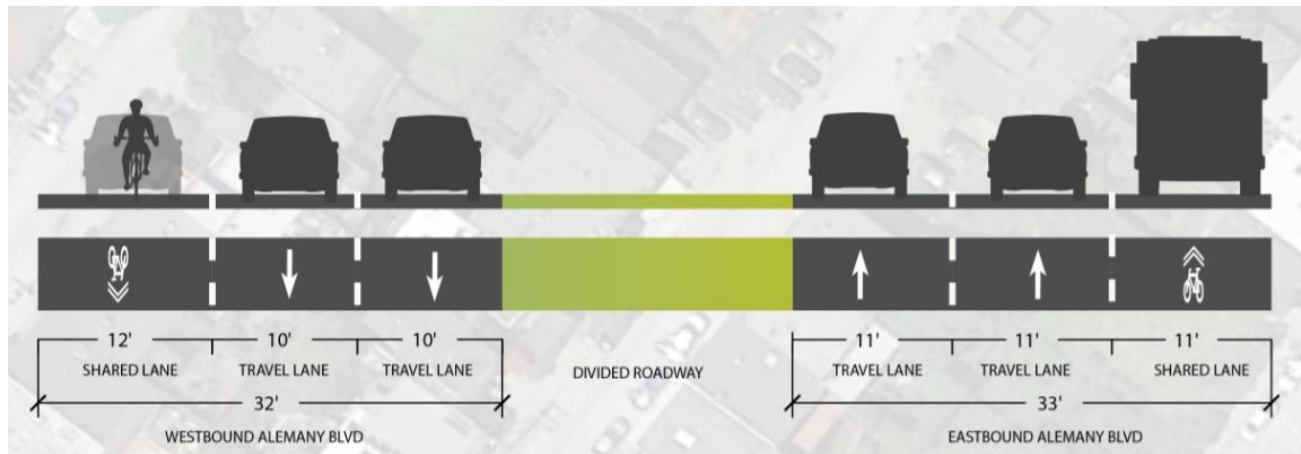


6 New painted bulb outs reduce pedestrian crossing distance and lower vehicle turning speeds.

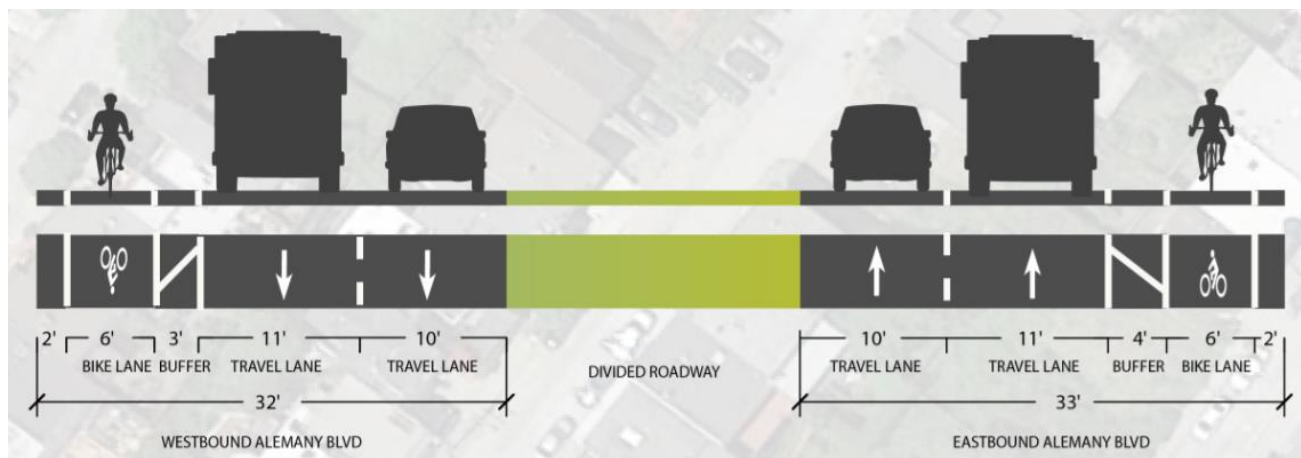
Improvement Benefits



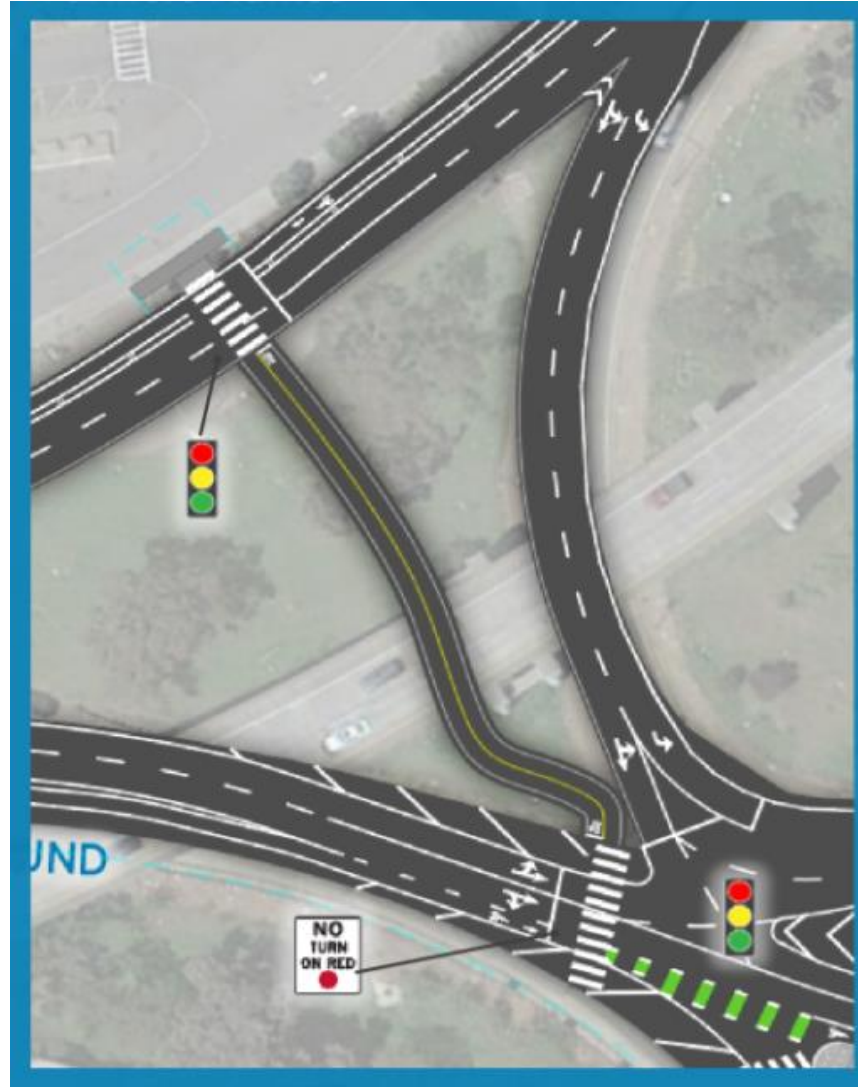
Existing



Proposed

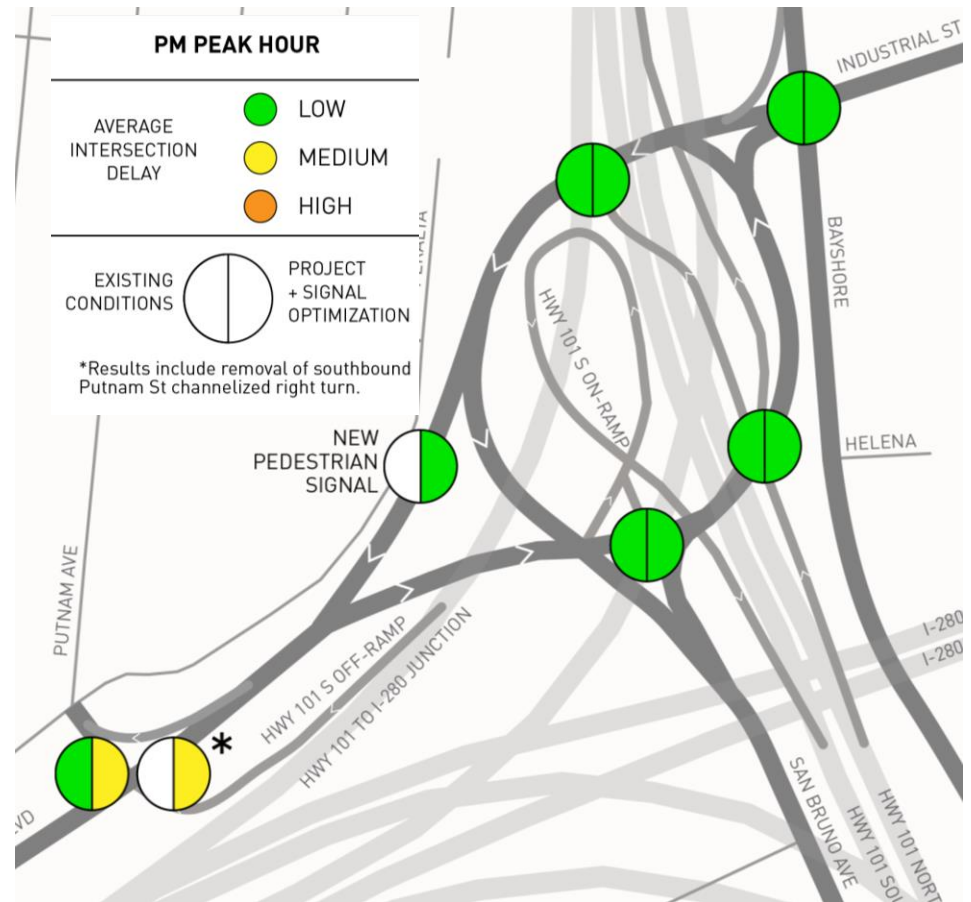


Improvement Benefits



Traffic Analysis

- ▶ Analyzed traffic operations at 5 existing intersections and one new crossing
- ▶ Designs accommodate manageable circulation and traffic flow
- ▶ Signal modifications and shorter pedestrian crossings may also reduce vehicle delay





Implementation Strategies

▶ Near-term

- ▶ SFCTA continues to lead outreach, cost estimates, funding plan, coordination

▶ Phase 1 construction

- ▶ SFMTA leads Phase 1 construction and Caltrans coordination (permitting)

▶ Medium-term

- ▶ SFCTA coordinates with SFMTA, Caltrans, and SFDPW to complete funding and design plans



Planning level Cost Estimates and Funding Sources

- ▶ **Phase 1- Striping for pedestrian and bicycle improvements:**

Estimated total (approximate)- \$250K

- ▶ **Phase 2- Multi-use path:**

Estimated total- \$2 - \$3 mil

- ▶ **Possible Funding Sources:**

General Funds

Active Transportation Program

One Bay Area Grant (OBAG)

Prop K Half-cent Transportation Sales Tax

Capital Funding for NTIP District 9

Outreach Efforts



Previous Outreach:

- ▶ Community Groups
- ▶ Alemany Farmers Market

Upcoming Outreach:

▶ September:

Portola Neighborhood Association – 9/27/16

SFCTA CAC – 9/28/16

▶ October:

SFCTA Finance Committee

Alemany Farmers Market

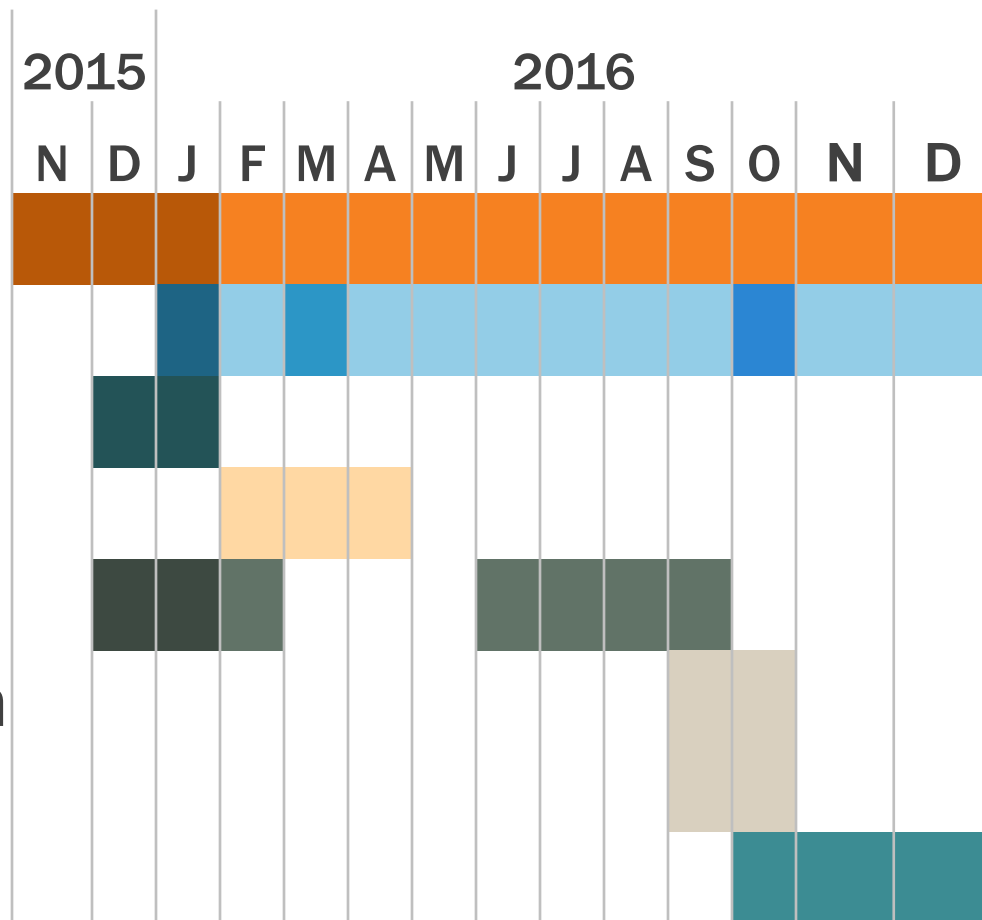
SF Empowerment Center

Family Connections

Project Schedule



Project Mgmt
Community Outreach
Existing Conditions
Traffic Analysis
Design & Cost Estimates
Funding & Implementation Strategies
Final Report



Questions?



SAN FRANCISCO COUNTY TRANSPORTATION AUTHORITY