



San Francisco Subway Vision

SFCTA Citizens Advisory Committee

October 26, 2016



San Francisco's 2016 Subway Vision

Ordinance 202-15 amended transportation code such that San Francisco maintain a Subway Vision

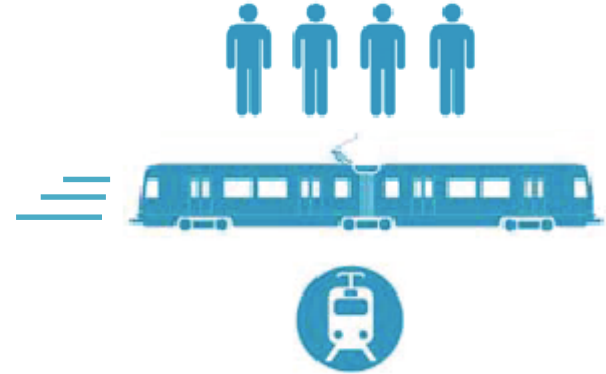
- Policy Guidance on Application of Subways
- Operator/Mode Neutral - Local and Regional Thinking
- List of Subway Candidate Corridors

Subway Vision will inform and be refined through ConnectSF Program

Characteristics of Subways

Features:

- Capacity
- Speed
- Reliability

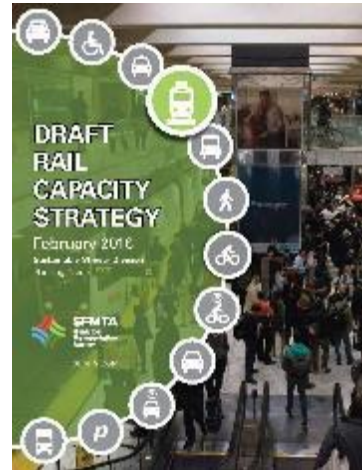


Tradeoffs:

- Delivery Timeline
- Capital Cost
- Station Spacing & Access



Prior Plan Review

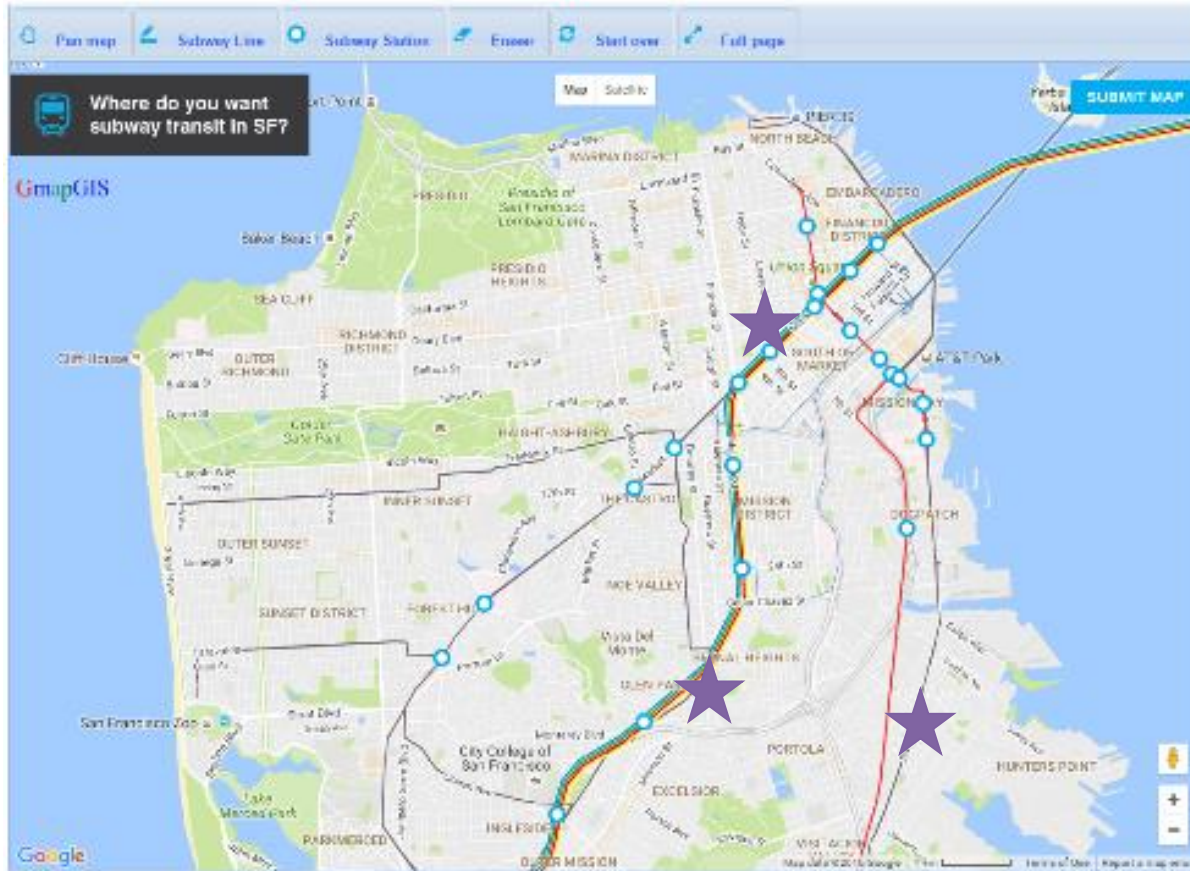


moveSmartSF
SAN FRANCISCO
 TRANSPORTATION PLAN
 2040

FINAL REPORT
 DECEMBER 2013



Outreach



Online Outreach Results

Subway Vision

Online Map Responses

October 2016

Online Responses

Value



Existing Subway

Existing Surface Rail

Rail Stations

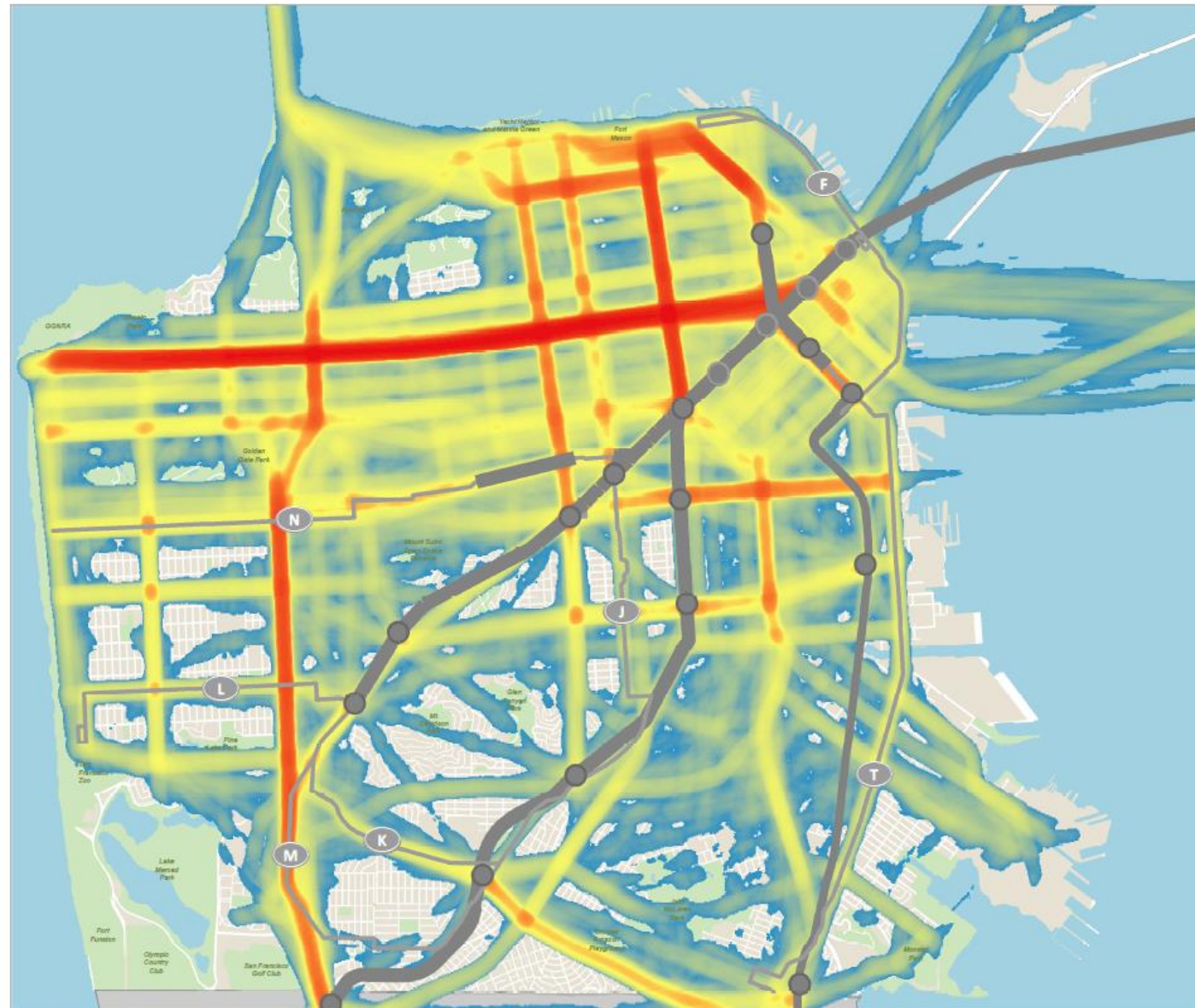


Scale 1:50,000

Date Saved: 10/12/2016

By downloading this map, you are agreeing to the following disclaimer: "The City and County of San Francisco ("City") provides the following data as a public record and no rights of any kind are granted to any person by the City's provision of this data. The City and County of San Francisco ("City") makes no representation regarding and does not guarantee or otherwise warrant the accuracy or completeness of this data. Anyone who uses this data for any purpose whatsoever does so entirely at their own risk. The City shall not be liable or otherwise responsible for any loss, harm, claim or action of any kind from any person arising from the use of this data. By accessing this data, the person accessing it acknowledges that she or he has read and does so under the condition that she or he agrees to the contents and terms of this disclaimer."

ConnectSF



Pop-Up Outreach Results

Subway Vision

Pop-Up Responses

October 2016

Pop-Up Responses

Value



Existing Subway

Existing Surface Rail

Rail Stations



Scale 1:50,000

Date Saved: 10/14/2016

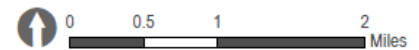
By downloading this map, you are agreeing to the following disclaimer: "The City and County of San Francisco ("City") provides the following data as a public record and no rights of any kind are granted to any person by the City's provision of this data. The City and County of San Francisco ("City") makes no representation regarding and does not guarantee or otherwise warrant the accuracy or completeness of this data. Anyone who uses this data for any purpose whatsoever does so entirely at their own risk. The City shall not be liable or otherwise responsible for any loss, harm, claim or action of any kind from any person arising from the use of this data. By accessing this data, the person accessing it acknowledges that she or he has read and does so under the condition that she or he agrees to the contents and terms of this disclaimer."

ConnectSF

Needs Assessment & Analysis

Projected Population Density 2040

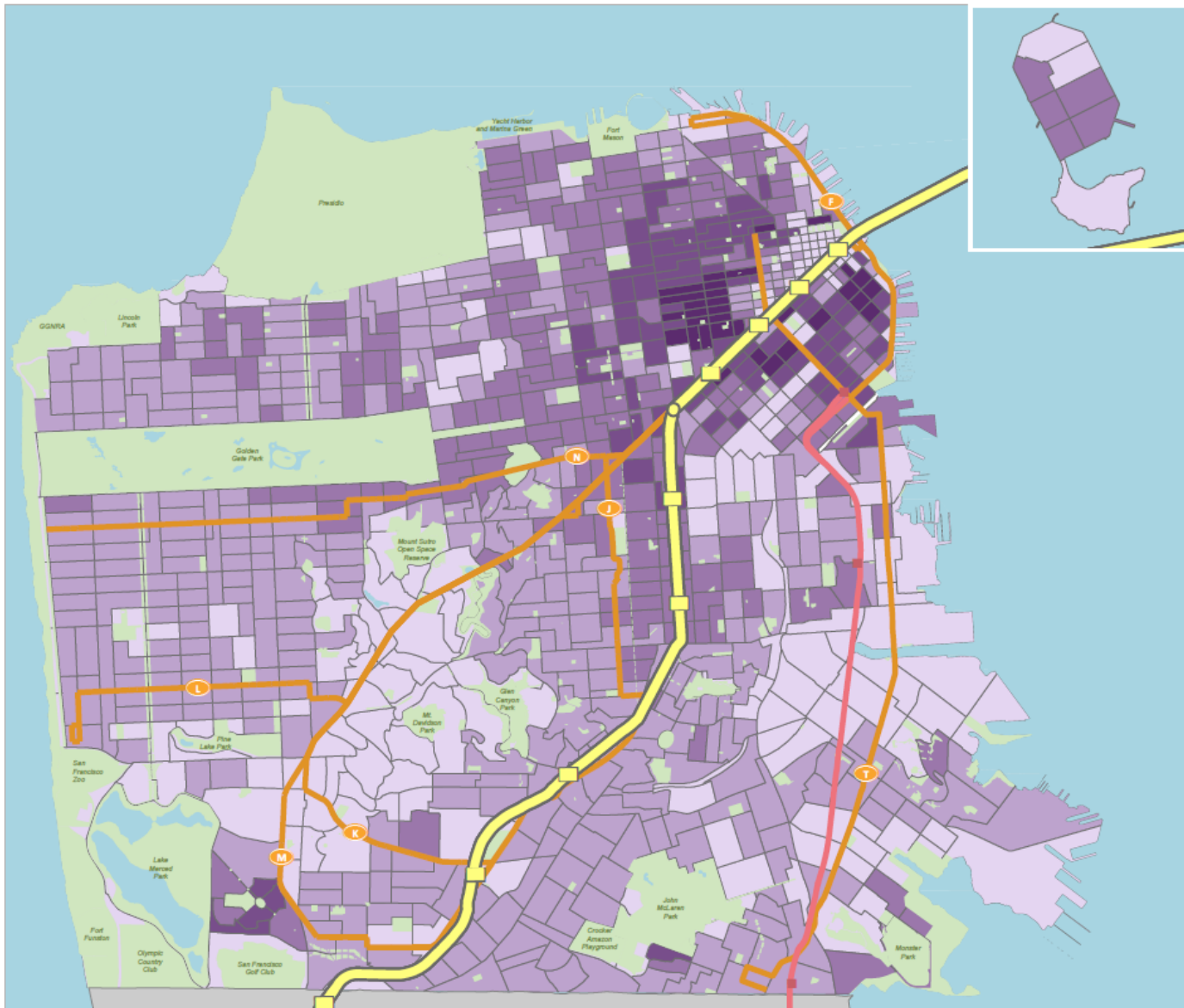
- Caltrain Stations
- Caltrain
- < 20 Residents per Acre
- 20 - 50
- 50 - 100
- 100 - 200
- 200 < Residents per Acre
- BART Stations
- Existing BART
- Existing Muni Rail
- Water Bodies
- Parks



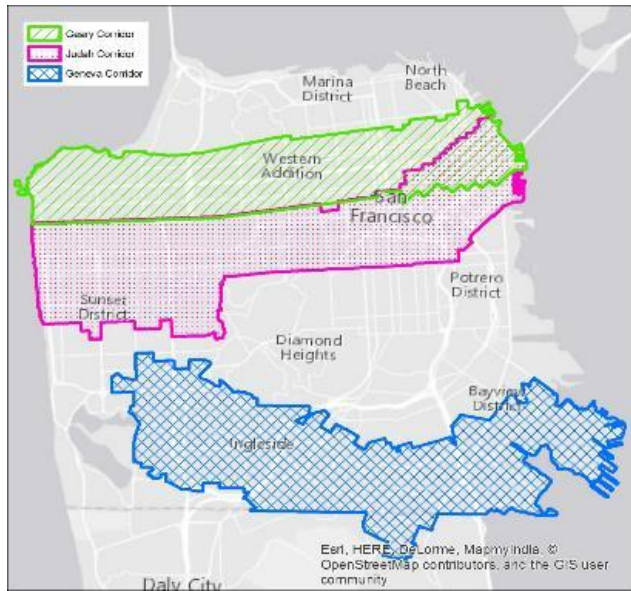
Scale 1:50,000

Date Saved: 8/11/2016

By downloading this map, you are agreeing to the following disclaimer: "The City and County of San Francisco ("City") provides the following data as a public record and no rights of any kind are granted to any person by the City's provision of this data. The City and County of San Francisco ("City") makes no representation regarding and does not guarantee or otherwise warrant the accuracy or completeness of this data. Anyone who uses this data for any purpose whatsoever does so entirely at their own risk. The City shall not be liable or otherwise responsible for any loss, harm, claim or action of any kind from any person arising from the use of this data. By accessing this data, the person accessing it acknowledges that she or he has read and does so under the condition that she or he agrees to the contents and terms of this disclaimer."



Corridors for Evaluation



Cross Town – Connectors – Demand Based

Major Corridor Concepts

Subway Vision

Concept A

October 2016

Corridor Concepts

Existing Rail

- Muni Subway
- Muni Surface Rail
- Muni Stations
- BART
- BART Stations
- Caltrain
- Caltrain Stations
- Water Bodies

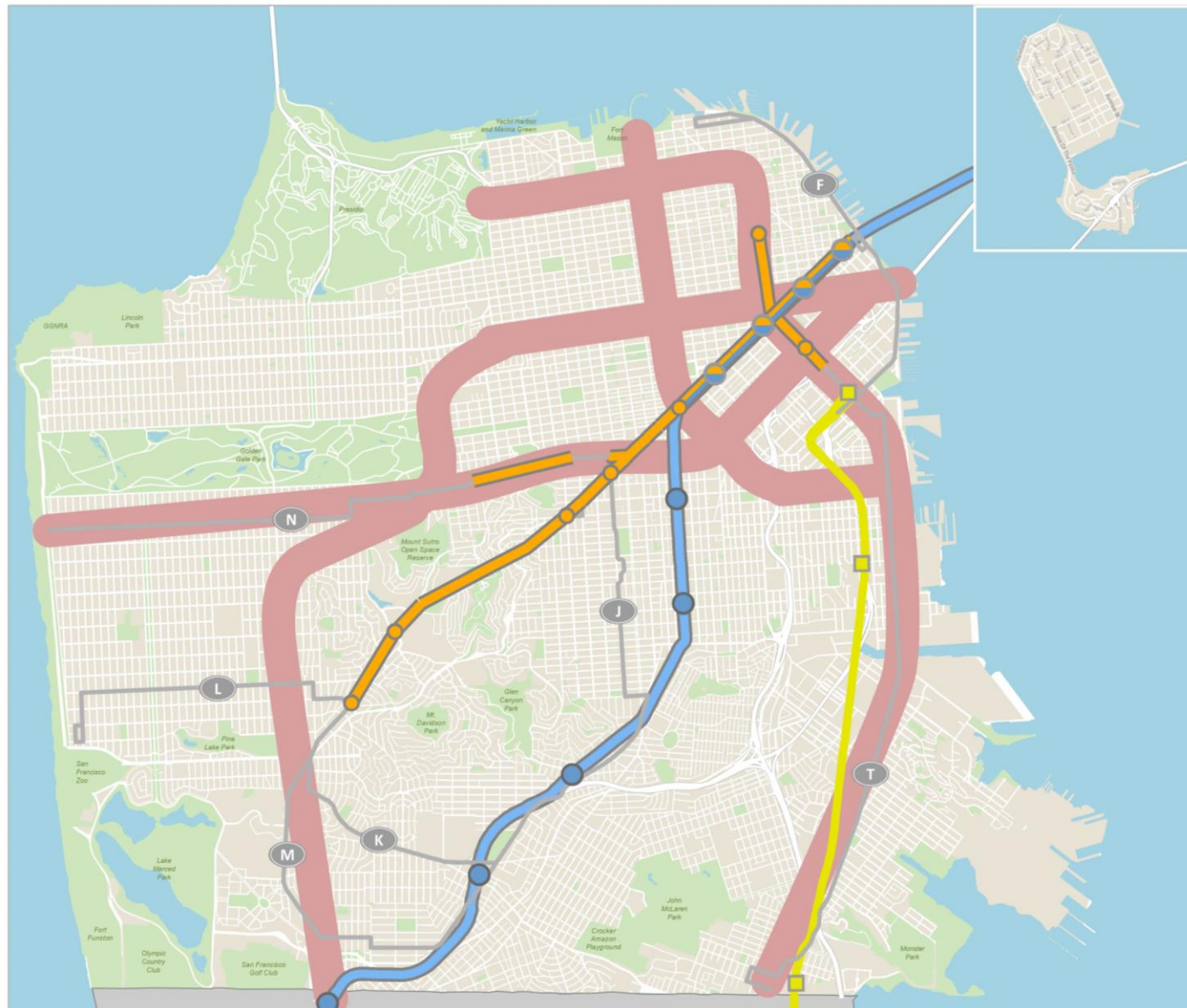


Scale 1:50,000

Date Saved: 9/16/2016

By downloading this map, you are agreeing to the following disclaimer: "The City and County of San Francisco ("City") provides the following data as a public record and no rights of any kind are granted to any person by the City's provision of this data. The City and County of San Francisco ("City") makes no representation regarding and does not guarantee or otherwise warrant the accuracy or completeness of this data. Anyone who uses this data for any purpose whatsoever does so entirely at their own risk. The City shall not be liable or otherwise responsible for any loss, harm, claim or action of any kind from any person arising from the use of this data. By accessing this data, the person accessing it acknowledges that she or he has read and does so under the condition that she or he agrees to the contents and terms of this disclaimer."

ConnectSF



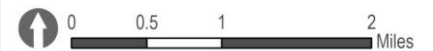
Major Corridor Concepts

Subway Vision

Concept B

September 2016

- Corridor Concepts
- Existing Rail
 - Muni Subway
 - Surface Rail
 - Muni Stations
 - BART
 - BART Stations
 - Caltrain
 - Caltrain Stations
 - Water Bodies
 - Parks



Scale 1:50,000

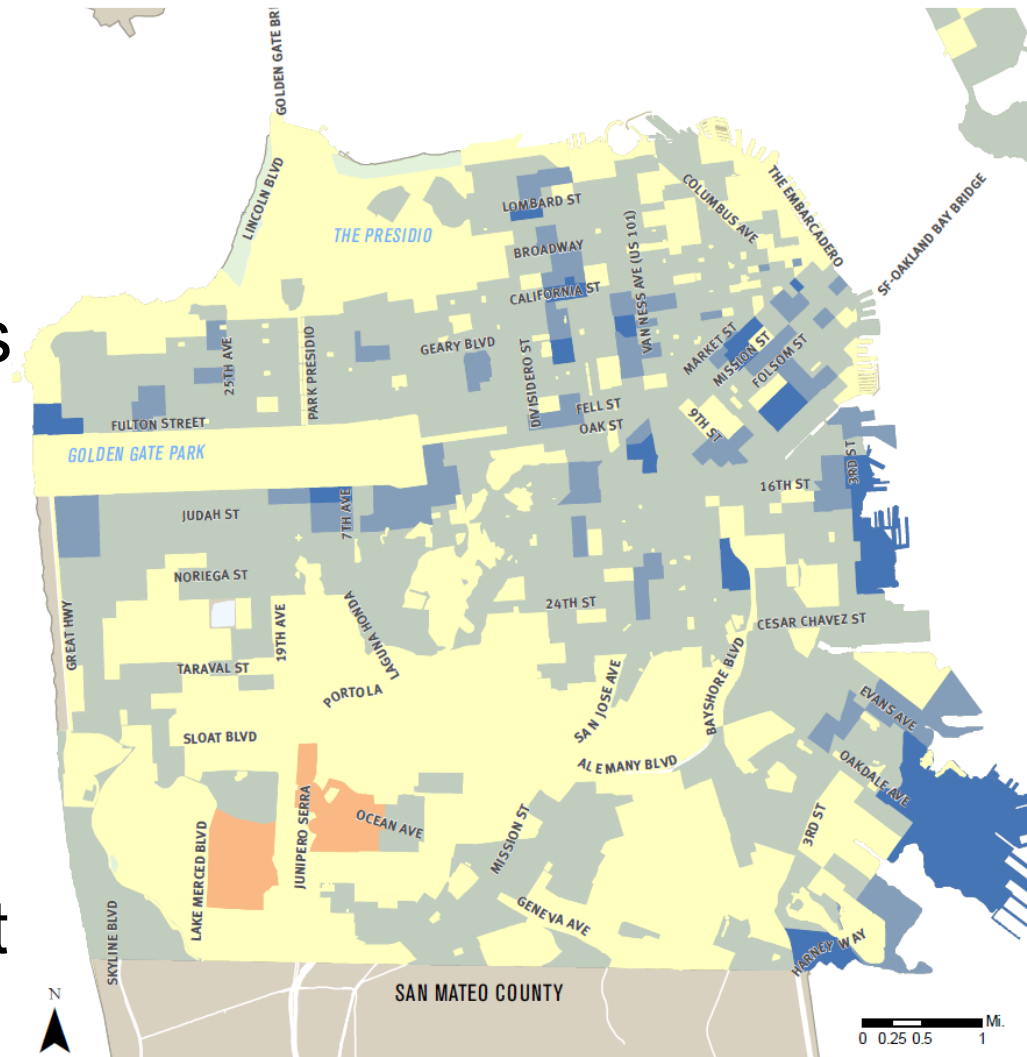
Date Saved: 9/16/2016

By downloading this map, you are agreeing to the following disclaimer: "The City and County of San Francisco ("City") provides the following data as a public record and no rights of any kind are granted to any person by the City's provision of this data. The City and County of San Francisco ("City") makes no representation regarding and does not guarantee or otherwise warrant the accuracy or completeness of this data. Anyone who uses this data for any purpose whatsoever does so entirely at their own risk. The City shall not be liable or otherwise responsible for any loss, harm, claim or action of any kind from any person arising from the use of this data. By accessing this data, the person accessing it acknowledges that she or he has read and does so under the condition that she or he agrees to the contents and terms of this disclaimer."

ConnectSF

System Performance Findings

- Travel Time Savings
- Reliability Improvements
- Increased Ridership
- Enhanced Accessibility
- Low Income Riders Benefit



Subway Vision Transit Travel Time

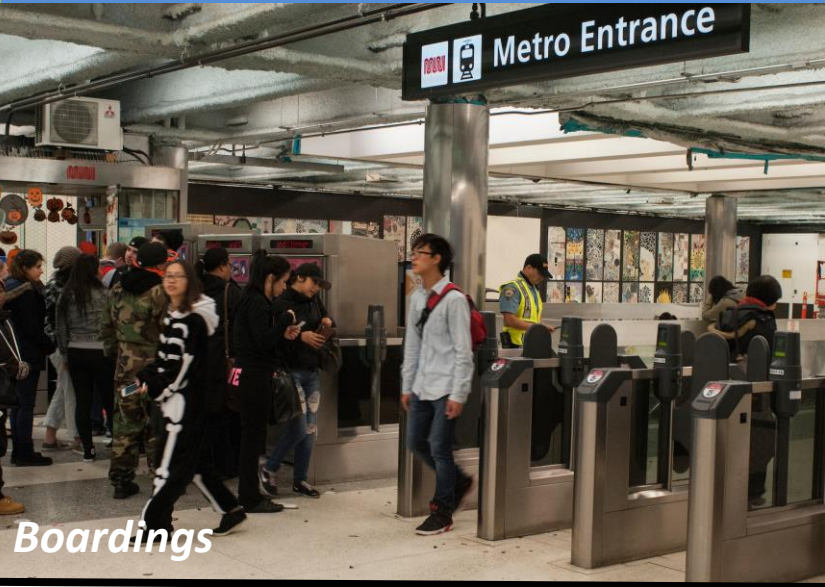
Total Difference for
All Trips (hours)

Concept B vs. 2040 Baseline

Concept B v. 2040 Baseline Travel time savings (hrs)



Evaluation Metrics

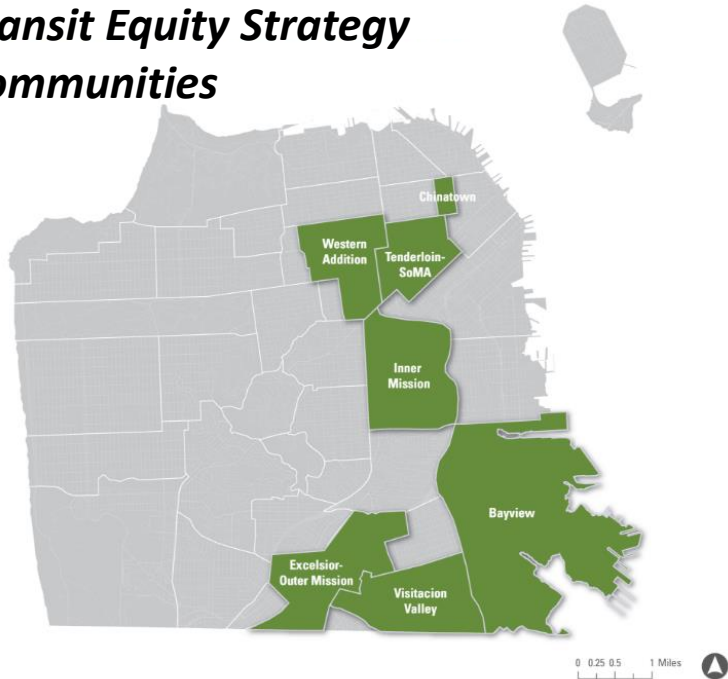


Boardings



Travel Time

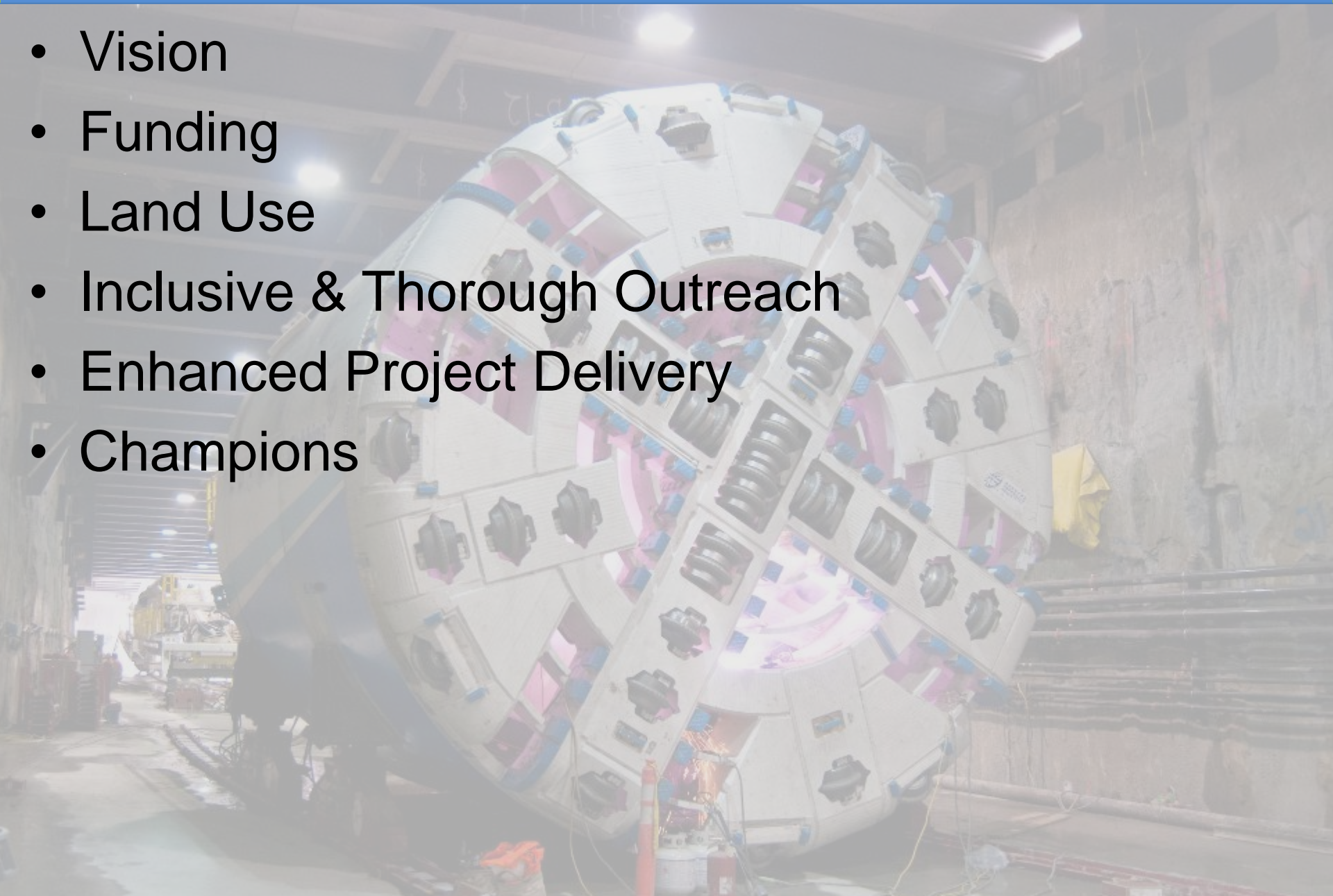
Transit Equity Strategy Communities



System Integration

Developing the Subway Vision

- Vision
- Funding
- Land Use
- Inclusive & Thorough Outreach
- Enhanced Project Delivery
- Champions



Next Steps

- Final Subway Vision End of 2016

ConnectSF

www.connectsf.org



EQUITY



SAFETY AND LIVABILITY



ENVIRONMENTAL
SUSTAINABILITY



ECONOMIC VITALITY



Michael Schwartz

Principal Transportation Planner, SFCTA

Michael.Schwartz@sfcta.org

Sarah Jones

Director of Planning, SFMTA

Sarah.Jones@sfmta.com