

Central Subway Project Delivery Update

Citizens Advisory Committee Agenda Item 5



SAN FRANCISCO COUNTY TRANSPORTATION AUTHORITY

July 26, 2017

Project is Within Budget

- ▶ Forecast-at-completion remains at \$1.578 billion, the baseline established in April 2009
- ▶ \$1.07 billion spent as of May 31 = 67.8%
- ▶ Contingency at \$75.05 million, \$14.93 million over \$60 million FTA recommendation
- ▶ Contractor has spent \$492.27 million or 57.9% of its \$846.92 million budget



Project is Behind Schedule

- ▶ Contractor's Forecast-at-Completion is December 2019
- ▶ Twelve months later than the baseline established in April 2009
- ▶ The delay is attributed to the Contractor's inability to meet its own excavation rates for the Chinatown Station
- ▶ The balance of the project is on schedule



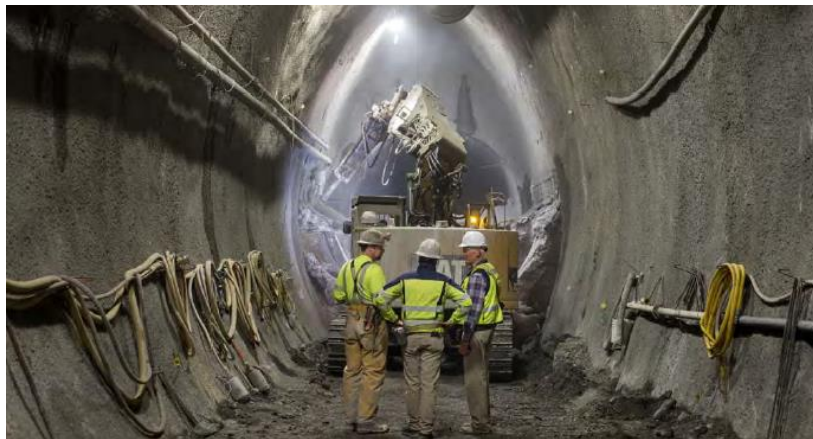
Schedule Delay Mitigation

- ▶ Contractor is required to develop and implement a recovery schedule and mitigation plan
- ▶ SFMTA has authorized the contractor to re-sequence the Chinatown Station excavation in order to have more headings available for mining operations
- ▶ SFMTA is re-evaluating the overall schedule, using approved as-built monthly schedules



Schedule Workshops

- ▶ SFMTA has held two schedule workshops with the FTA and Transportation Authority staff
- ▶ A third FTA workshop is scheduled for July 26 and 27
 - Evaluate potential time saving measures
 - Assess likely range of dates for Revenue Service
 - Determine achievable Chinatown excavation production rates
 - Potential for re-sequencing Testing and Startup activities



Delay Cost Impact

- ▶ Potential additional soft costs and contractor claims, costs are already included in the cost forecast
- ▶ It appears that there is sufficient cost contingency to cover these items and other project cost risks
- ▶ Liquidated Damages for this contract are \$50,000/day



Chinatown Station



Union Square /Market Street Station Site



Yerba Buena/Moscone Station Site



Brannan Street Surface Station Site



Central Subway Update



THANK YOU

