

# San Francisco Congestion Management Program 2017 Update

Citizens Advisory Committee  
Agenda Item 11



**SAN FRANCISCO COUNTY TRANSPORTATION AUTHORITY**

**November 29, 2017**

# CMP Purpose and Requirements

## ► Purpose

- Define and report performance measures for congestion management
- Describe congestion management strategies and efforts; 2017-19 work program

## ► Requirements

- Designated CMA updates every two years
- Auto Level-of-Service (LOS) and multimodal performance measures
- Travel Demand Management (TDM) and Land use impact analysis
- Capital Improvement Program (CIP)

### Approval of CMP:

- Maintains city's eligibility for state gas tax and other revenues

### CMP Monitoring Network 2017



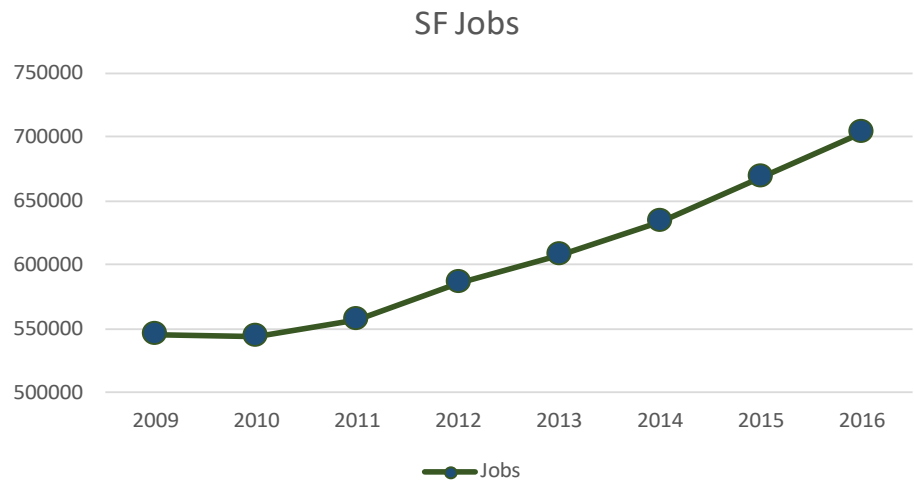
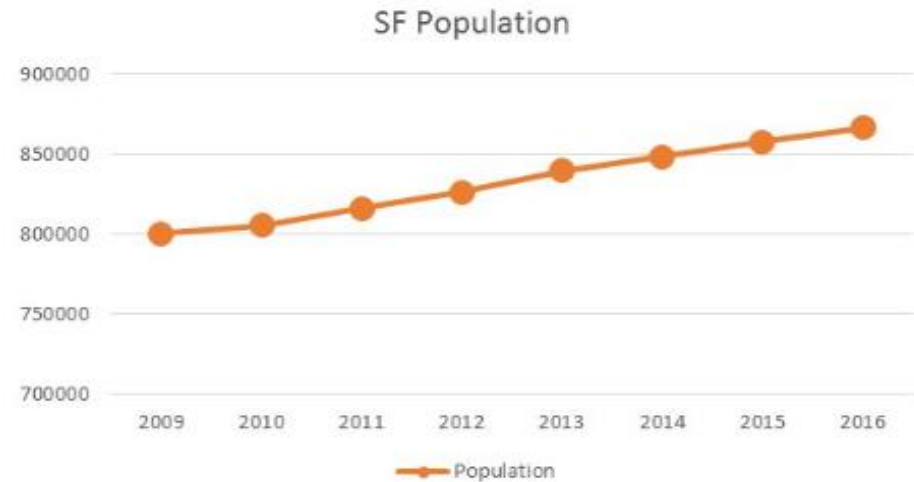
Data Sources: Ibis, Inc. & 2015 SFCTALOS Monitoring

This map is for planning purposes only.



# San Francisco's Rapid Growth

- ▶ Daytime population (includes non-resident workers) is over one million
- ▶ Over a 100,000 jobs added since 2010
- ▶ Jobs growth ~3 times population growth
- ▶ Significant commuting to San Francisco from other counties



# Automobile LOS Monitoring - 2017

- ▶ Level of Service (LOS): Measure of auto congestion, required standard by law.
- ▶ Average Speed Decreases

Facility Type	Period	2015	2017	% Change
Arterials (198 miles)	AM Peak	14.6 mph	13.6 mph	-7%
	PM Peak	12.7 mph	12.2 mph	-4%
Freeways (35 miles)	AM Peak	38.8 mph	35.8 mph	-8%
	PM Peak	26.2 mph	26.4 mph	+1%



# Transit Speed Monitoring- 2017

## ► Spring 2017 conditions:

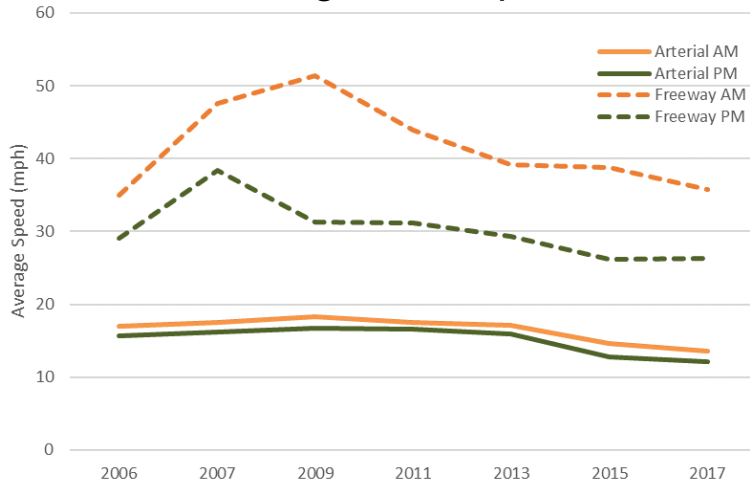
- Average Muni bus speeds on network  
AM: 8.1 mph  
PM: 7.3 mph
- Transit slightly more competitive:  
average auto-to-transit speed ratio  
dropped from 1.8 to 1.7

### Average Bus Speeds PM 2017

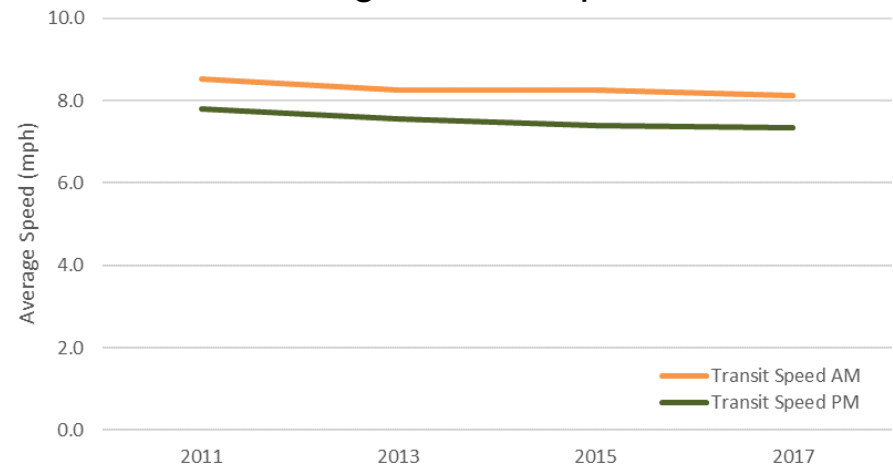


# Auto and Transit Speed Trends

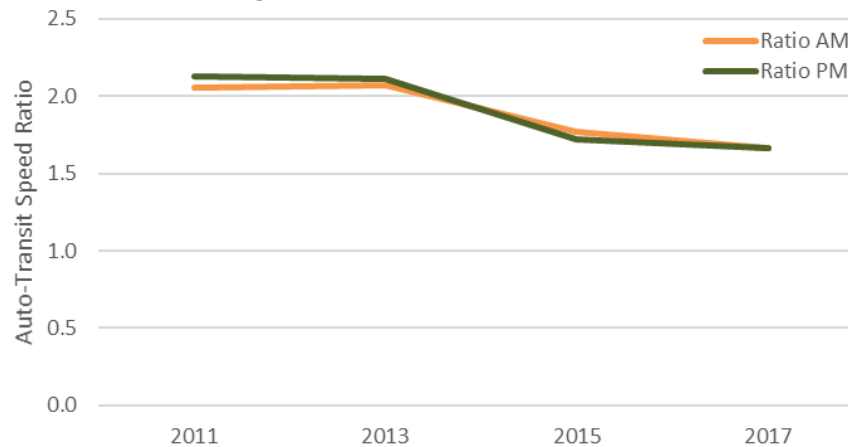
## Average Auto Speeds



## Average Transit Speeds



## Average Auto/Transit Speed Ratio



# Key Updates in the 2017 CMP

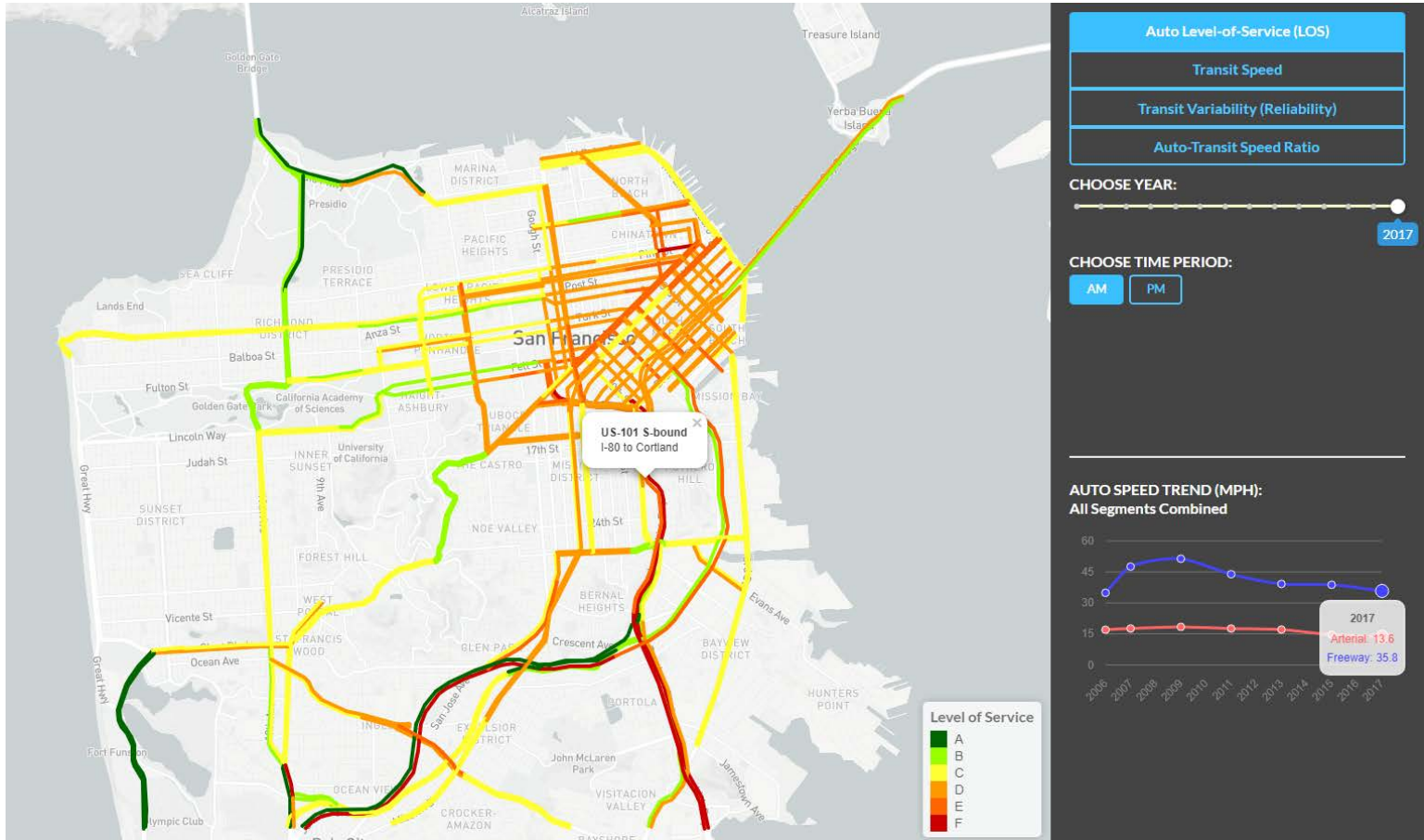
- ▶ 2017 system performance monitoring
    - ▶ Automobile Level of Service (LOS or delay) monitoring
    - ▶ Surface transit speed analysis
- } Comparative travel time reporting
- ▶ Updates on travel demand management (TDM) studies and initiatives
  - ▶ Regional and state policy developments
  - ▶ Travel forecasting improvements
  - ▶ Capital Improvement Program (CIP): fund programming activities and project delivery progress
  - ▶ **Data warehouse created to store CMP monitoring data**
  - ▶ **Web-based CMP data explorer tool**



# CMP Data Visualization Website

<http://cmp.sfcta.org/>

Release date: 5<sup>th</sup> December, 2017





Questions?



SAN FRANCISCO COUNTY TRANSPORTATION AUTHORITY