

**2019 PROPOSITION K  
5-YEAR PRIORITIZATION PROGRAM**

## **CURB RAMPS**

Pending Board Approval: November 27, 2018

Prepared for the San Francisco County Transportation Authority

By Department of Public Works



SAN FRANCISCO COUNTY TRANSPORTATION AUTHORITY

1455 Market Street, 22nd Floor, San Francisco, CA 94103

TEL 415.522.4800 FAX 415.522.4829

EMAIL [info@sfcta.org](mailto:info@sfcta.org) WEB [www.sfcta.org](http://www.sfcta.org)



**This Page Intentionally Left Blank**

## Table of Contents

- Eligibility
- Prioritization Criteria
- Stretching Your Prop K Sales Tax Dollars Farther
- Performance Measures
- Table 2 - Project Delivery Snapshot
- Table 3 - Prioritization Criteria and Scoring Table
- Table 4 – Draft Prop K 5-Year Project List (FY 2019/20– FY 2023/24)
- Project Information Forms
- 2014 Prop K 5-Year Prioritization Program – Program of Projects (as adopted)
- 2014 Prop K 5-Year Prioritization Program – Program of Projects (as proposed)
- Curb Ramp Locations Requested by Public (Requests Not Assigned to a Project - As of 9/11/2018)

## Eligibility

Eligibility as identified in the voter approved Prop K Expenditure Plan is as follows:

“Construction of new wheelchair curb ramps and related roadway work to permit ease of movement for the mobility impaired. Reconstruction of existing ramps. Includes project development and capital costs. Sponsoring Agency: DPW, MUNI. The first \$23.6M is Priority 1. The next \$2.4M is Priority 2 and the remainder is Priority 3. Total Funding: \$66M; Prop K: \$36M.”

DPW, now referred to as SFPW stands for Department of Public Works and MUNI stand for San Francisco Municipal Railway. MUNI is now under the San Francisco Municipal Transportation Agency (SFMTA).

## Prioritization Criteria

One of the key required elements of the 5YPPs is a transparent process for how projects get selected. Prop K requires at a minimum that each category include prioritization criteria that address project readiness, community support, and relative level of need or urgency. For the 2014 5YPP update, the Citizens Advisory Committee requested that the Transportation Authority and project sponsors develop a user-friendly, transparent scoring table that could apply to all 5YPPs, and that the scoring prioritize safety and community input highly. For the 2019 5YPP update, we have not made any changes to the Prioritization Criteria and Scoring Table for this category.

Table 3 shows the Prioritization Criteria and Scoring Table. SFPW’s curb ramp program is intended to make safety improvements at numerous locations citywide. The locations are

primarily identified through public request and SFPW inspection. Therefore, this category does not lend itself to using the scoring template. SFPW does maintain its own criteria and prioritization process for selecting curb ramp locations which considers the following:

- Citizen requests.
- Each intersection is assigned an initial priority based on the condition of any existing curb ramps at the location and the disability status of the requester.
- Intersections with at least one corner with ramps in poor condition and a request from a person with a disability are given the highest initial priority.
- All locations are then cross-referenced with Curb Ramp Information System (CRIS) project data to determine which intersections are already in the scope of existing construction projects.
- The data is then mapped, and unresolved requests are evaluated against geospatial criteria including:
  - proximity to government offices and facilities, transportation, places of public accommodation, healthcare facilities, and schools.
  - Proximity of locations to one another (for construction efficiency purposes) and SFMTA locations vital for access to transit services.
- Intersections are also assessed based on whether they are located in the High Injury Network and whether they have a suspected or confirmed sub-sidewalk basement.

**Citizen Requests:** Each fiscal year, SFPW and Mayor's Office on Disability (MOD) develop a prioritized list of locations for each of San Francisco's supervisorial districts. Citizen requests have one of the most significant impacts on prioritization of curb ramp locations. As SFPW receives new citizen requests, they are added to Public Work's CRIS database.

**Public Outreach:** SFPW and MOD work closely to reach out to and educate citizens on the request process and conduct outreach activities in neighborhoods with a high population of people with disabilities and in areas where there are low numbers of usable curb ramps.

In Fiscal Year 2017/18, Public Works's curb ramp program staff conducted outreach specifically in the Tenderloin and Excelsior neighborhoods. In addition to an information booth at a Sunday Streets event, advertisements were placed in community newsletters. The Curb Ramp Program Manager gave a presentation to the Mayors Disability Council. Additionally, Public Works TV episode 20 "Curb Appeal" featured curb ramps.

Social media is also used to reach out to the public. MOD and SFPW are planning two open houses to be hosted by MOD to get input from the public. A 5"x7" postcard containing trilingual information on how to participate and initiate curb ramp requests is regularly mailed to paratransit customers, provided to city employees to distribute while in the field, and distributed at community meetings and disability community events. Information is distributed to other city agencies including the SFMTA, Housing Authority, Department of Public Health, and SF Unified School District. San Francisco Public Works also provided supervisors information on requesting curb ramps. San Francisco Public Works and MOD also provide information on their web sites on how to request curb ramps and are updating to provide additional useful information for the public.

**Geographic Equity:** The Prop K Expenditure Plan also requires consideration of geographic equity in terms of project distribution that takes into account the various needs of San Francisco’s neighborhoods. To ensure an equitable distribution of curb ramp construction throughout the City, SFPW and MOD annually assesses the distribution of locations constructed over the past five years and the neighborhood/district need. If noted that neighborhoods or districts that are underrepresented for past construction and are also in need of curb ramps, SFPW and MOD identify additional locations in those parts of the city to provide a more equitable distribution.

**Access to Transit:** In addition to citizen requests and geographic equity, San Francisco Public Works gives high priority to locations identified during Federal Transit Administration audits of SFMTA bus stations, as well as other locations vital to transit access identified by SFMTA.

SFMTA continues to coordinate with SFPW on locations listed in the plan. Using the aforementioned criteria and prioritization process and the funds allocated, SFPW will coordinate with SFMTA to identify locations for design and construction of curb ramps.

**Transportation Authority Note:** SFPW’s annual Prop K requests for curb ramps will include the list of locations by supervisorial district where SFPW would be constructing curb ramps in the upcoming year. There is a backlog for high-priority locations which is carried forward each year.

### Stretching Your Prop K Sales Tax Dollars Farther

Leveraging Prop K funds against non-Prop K fund sources (e.g., federal, state, other local funds) is necessary to fully fund the Expenditure Plan projects and programs. For the Curb Ramps category, the Prop K Expenditure Plan assumes that every \$1 of sales tax revenue spent would leverage about \$1 in non-Prop K funds. The table below compares Prop K Expenditure Plan assumptions with proposed leveraging in the 2019 5-year project lists.

**Table 1. Prop K Leveraging<sup>1</sup>**

Category	Expected Leveraging (Non-Prop K Funds)	Proposed Leveraging (Non-Prop K Funds)
Curb Ramps	47%	11%

<sup>1</sup> This table compares the expected leveraging assumed in the Expenditure Plan with the proposed leveraging assumed in the 5-Year Project List.

While the proposed leveraging for Curb Ramps Prop K funds is significantly below Expenditure Plan assumptions, when considering all fund sources that SFPW anticipates using for curb ramps for FY 2019/20, the picture looks much better. For FY19/20, SFPW has \$8,937,975 in General Funds for curb ramp projects that are not funded by Prop K. If SFPW were to receive this level of funding over the 5-year period, this would translate to leveraging of 88.1%.

### Performance Measures

Prop K requires the establishment of performance measures for each programmatic category in the Expenditure Plan. The intent is to demonstrate the system performance benefits of sales

tax projects (e.g. reduced transit travel time), to ensure funds are being used cost effectively, and to inform allocation of Prop K funds and programming and prioritization of other funds by the Transportation Authority (e.g. Transportation Fund for Clean Air, Prop AA Vehicle Registration Fee funds).

SFPW currently uses and will continue to use the performance measure for the curb ramp program of completing the annual projects on time and on budget.

**Table 2. Project Delivery Snapshot  
Curb Ramps (EP 41)**

5-Year Prioritization Program (5YPP) Period *	Programmed (Available for Allocation)	Allocated (as of July 2018)	% Allocated
2005 5YPP (FY 2004/05-2008/09)	\$ 3,506,400	\$ 3,329,431	95%
2009 5YPP (FY 2009/10-2013/14)	\$ 4,132,191	\$ 3,957,291	96%
2014 5YPP (FY 2014/15 - 2018/19) as of 7/24/2018	\$ 4,027,016	\$ 2,192,651	54%
<b>Total</b>		\$ 9,479,372	

\*Unallocated funds are carried forward for programming in the following 5YPP period.

Table below shows percent complete as reported by project sponsors in July 2018

**Completed Projects/Project Phases** (sorted by allocation year, then sponsor, then project name)

Sponsor	Fiscal Year of Allocation	Project Name	Phase(s) Funded	Allocated (as of July 2018)	% Complete
SFPW	2004/05	5-Year Prioritization Program - Curb Ramps	Planning	\$ 6,607	100%
SFPW	2004/05	Curb Ramps	Planning	\$ 864,839	100%
SFPW	2005/06	Curb Ramps	Construction	\$ 616,987	100%
SFPW	2006/07	Curb Ramps	Construction	\$ 643,917	100%
SFPW	2007/08	Curb Ramps	Construction	\$ 671,526	100%
SFPW	2008/09	Curb Ramps	Construction	\$ 525,555	100%
SFPW	2009/10	Curb Ramps	Construction	\$ 700,342	100%
SFPW	2010/11	Curb Ramps	Construction	\$ 689,190	100%
SFPW	2011/12	Curb Ramps	Construction	\$ 796,000	100%
SFPW	2012/13	Curb Ramps	Construction	\$ 806,568	100%
SFPW	2013/14	Curb Ramps	Construction	\$ 867,000	100%
SFPW	2014/15	Curb Ramps	Construction	\$ 722,940	100%

**Table 2. Project Delivery Snapshot  
Curb Ramps (EP 41)**

Underway Projects/Project Phases (sorted by allocation year, then sponsor, then project name)

Sponsor	Fiscal Year of Allocation	Project Name	Phase(s) Funded	Allocated (as of July 2018)	% Complete
SFPW	2016/17	Curb Ramps	Construction	\$ 763,969	70%
SFPW	2017/18	Curb Ramps	Construction	\$ 804,084	0%

For more information about the projects funded by the Transportation Authority, as well as projects for which we help oversee in our role as the Congestion Management Agency for San Francisco, visit our interactive project map at [mystreetsf.sfcta.org](http://mystreetsf.sfcta.org)



Table 3 - Prioritization Criteria and Scoring Table  
Curb Ramps (EP 41)

PROP K PROGRAM-WIDE CRITERIA				CATEGORY SPECIFIC CRITERIA				Total
Project Readiness	Community Support	Time Sensitive Urgency						
Curb Ramps								

Locations are determined by inspections and requests from the public.

**Prioritization Criteria Definitions:**

**Project Readiness:** Project likely to need funding in fiscal year proposed. Factors to be considered include adequacy of scope, schedule, budget and funding plan relative to current project status (e.g. expect more detail and certainty for a project about to enter construction than design); whether prior project phases are completed or expected to be completed before beginning the next phase; and whether litigation, community opposition or other factors may significantly delay project.

**Community Support:** Project has clear and diverse community support and/or was it identified through a community-based planning process. An example of a community-based plan is a neighborhood transportation plan, but not a countywide plan or agency capital improvement program.

Three points for a project in an adopted community based plan with evidence of diverse community support.  
Two points for a project with evidence of support from both neighborhood stakeholders and groups and citywide groups.

One point for a project with evidence of support from either neighborhood stakeholders and groups or citywide groups.

**Time Sensitive Urgency:** Project needs to proceed in proposed timeframe to enable construction coordination with another project (e.g. minimize costs and construction impacts), to support another funded or proposed project (e.g. new signal controllers need to be installed to support TEP implementation) or to meet timely use of funds deadlines associated with matching funds.

Table 4 - Prop K 5-Year Project List (FY 2019/20 - FY 2023/24)  
 Curb Ramps Category (EP 41)  
 Programming

Agency	Project Name	Phase	Status	Fiscal Year					Total
				2019/20	2020/21	2021/22	2022/23	2023/24	
SFPW	Curb Ramps	CON	Planned	\$1,183,090					\$1,183,090
SFPW	Curb Ramps	CON	Planned		\$1,189,076				\$1,189,076
SFPW	Curb Ramps	CON	Planned			\$1,228,022			\$1,228,022
SFPW	Curb Ramps	CON	Planned				\$1,263,517		\$1,263,517
SFPW	Curb Ramps	CON	Planned					\$1,299,429	\$1,299,429
<b>Funds Requested in 2019 5YPP</b>				\$1,183,090	\$1,189,076	\$1,228,022	\$1,263,517	\$1,299,429	\$6,163,134
<b>Funds Programmed in 2019 Strategic Plan Baseline</b>				\$1,590,000	\$901,939	\$940,884	\$976,380	\$1,012,291	\$5,421,494
<b>Cumulative Remaining Programming Capacity</b>				\$406,910	\$119,773	(\$167,365)	(\$454,502)	(\$741,640)	(\$741,640)

**Table 4 - Prop K 5-Year Project List (FY 2019/20 - FY 2023/24)  
Curb Ramps Category (EP 41)  
Cash Flow (Maximum Annual Reimbursement)**

Project Name	Phase	Fiscal Year							Total
		2019/20	2020/21	2021/22	2022/23	2023/24	2024/25	2025/26	
Curb Ramps	CON	\$25,000	\$750,000	\$408,090					\$1,183,090
Curb Ramps	CON		\$25,000	\$750,000	\$414,076				\$1,189,076
Curb Ramps	CON			\$25,000	\$750,000	\$453,022			\$1,228,022
Curb Ramps	CON				\$25,000	\$750,000	\$488,517		\$1,263,517
Curb Ramps	CON					\$25,000	\$750,000	\$524,429	\$1,299,429
<b>Cash Flow Requested in 2019 5YPP</b>									
		\$25,000	\$775,000	\$1,183,090	\$1,189,076	\$1,228,022	\$1,238,517	\$524,429	\$6,163,134
<b>Cash Flow in 2019 Strategic Plan Baseline</b>									
		\$2,453,269	\$901,939	\$940,884	\$976,380	\$1,012,291	\$0	\$0	\$6,284,763
<b>Cumulative Remaining Cash Flow Capacity</b>									
		\$2,428,269	\$2,555,208	\$2,313,002	\$2,100,306	\$1,884,575	\$646,058	\$121,629	\$121,629

## San Francisco County Transportation Authority Proposition K Sales Tax Program Project Information Form



Prop K Project Information Form			
<b>Project Name:</b>	Curb Ramps		
<b>Implementing Agency:</b>	Department of Public Works		
Prop K Expenditure Plan Information			
<b>Category:</b>	C. Street & Traffic Safety		
<b>Subcategory:</b>	iv. Bicycle and Pedestrian Improvements		
<b>EP Line (Primary):</b>	41-Curb Ramps		
<b>Other EP Line Number/s:</b>			
<b>Fiscal Year of Allocation:</b>	2019/20, 2020/21, 2021/22, 2022/23, 2023/24		
Project Information			
<b>Project Location:</b>	TBD		
<b>Supervisorial District(s):</b>	TBD		
<b>Project Manager:</b>	Marcia Camacho		
<b>Phone Number:</b>	415-558-4015		
<b>Email:</b>	<a href="mailto:marcia.camacho@sfdpw.org">marcia.camacho@sfdpw.org</a>		
<b>Brief Project Description for MyStreetSF (80 words max):</b>	Prop K funds will be used to construct and reconstruct accessible curb ramps and related sidewalk, curb, gutter, and roadway work in the public right-of-way. San Francisco Public Works' Curb Ramp program meets the City's obligations under federal and state accessibility statutes, regulations, and policies to provide sidewalks and crosswalks that are readily and easily usable by people with disabilities.		
<b>Detailed Scope (may attach Word document):</b> Please describe the project goals, scope, benefits and how the project was prioritized. Also, describe any coordination with other projects (e.g. paving, MuniForward, Vision Zero).	<p>Curb ramp construction meets the City's obligations under federal and state accessibility statutes, regulations and policies to provide sidewalks and crosswalks that are readily and easily usable by people with disabilities.</p> <p>A fundamental provision of Title II of the Federal Americans with Disabilities Act (ADA) requires state and local governments to provide curb ramps. The U.S. Department of Justice (USDOJ) ADA Handbook states: "The legislative history of Title II of the ADA makes it clear that, under Title II, local and state governments are required to provide curb cuts on public streets... (and)... the employment, transportation, and public accommodation sections of ... [the ADA] would be meaningless if people who use wheelchairs were not afforded the opportunity to travel on and between streets." ADA Section 35.151(e) establishes accessibility requirements for new construction and alterations, requiring all newly constructed and altered streets, roads, or highways must contain curb ramps or other sloped areas at any intersection having curbs or other barriers to entry from a street level pedestrian walkway. Paragraph (d)(2) clarifies the application of the general requirement for program accessibility to the provision of curb ramps at existing crosswalks.</p> <p>The scope of this work is the construction and reconstruction of accessible curb ramps and related sidewalk, curb, gutter, and roadway work in the public right-of-way. Based on historical cost data and condition assumptions, Public Works anticipates the work funded by \$5,421,494 in Prop K sales tax funds over the five-year period will construct approximately 320 curb ramps. Public Works will use State Transportation Development Act, Article 3 funds for planning and design of these curb ramps. The average cost per ramp has increased since 2016/17 because of topographic and infrastructure obstacles. Topographic and infrastructure obstacles include high slopes on steep streets that require extensive roadway and sidewalk modifications, conflicts between ADA compliant slopes and proper storm water drainage that requires catch basin and culvert relocation and construction, and utility relocations like fire hydrants, water valves and meters, and street light pull boxes that need to be out of the curb ramp slopes. Sub-sidewalk basements and narrow sidewalks may require additional sidewalk widening or bulb-outs to provide proper access. As more ramps are constructed throughout the city, the more difficult locations remain, which increases the average cost.</p> <p>Each year, Public Works, the San Francisco Municipal Transportation Agency (SFMTA), and the Mayor's Office on Disability (MOD) will develop a list of curb return locations requiring curb ramp upgrades during the planning phase of the project. The list primarily includes locations identified through citizen complaints and requests, locations identified during Federal Transit Administration audits of Muni Key stations, and other locations vital to transit access identified by Muni. No coordination issues or external deadlines are likely to affect this year's curb ramp installation.</p>		
<b>Prior Community Engagement/Support (may attach Word document):</b> Please reference any community outreach that has occurred and whether the project is included in any plans (e.g. neighborhood transportation plan, corridor improvement study, station area plans).	Citizens can request curb ramps through the City's 311 customer service line, which provides translators in multiple languages. In conjunction with the Mayor's Office on Disability, community outreach includes distribution of trilingual postcards mailed to paratransit riders, provided to each Supervisor's office, distributed at key public events and workshops, and handed out by Public Works employees during regular field work.		
<b>Partner Agencies:</b> Please list partner agencies and identify a staff contact at each agency.	SFMTA, Mayor's Office on Disability		
<b>Type of Environmental Clearance Required:</b>	Categorically Exempt		
<b>Attachments:</b> Please attach maps, drawings, photos of current conditions, etc. to support understanding of the project.	<table border="1" style="width: 100%; border-collapse: collapse;"> <tr> <td style="width: 10%; text-align: center;">Yes</td> <td>Curb Ramp Locations Requested by Public (Requests Not Assigned to a Project - As of 9/11/2018) Map of Curb Ramps in Active Phases As of 08/31/2018;</td> </tr> </table>	Yes	Curb Ramp Locations Requested by Public (Requests Not Assigned to a Project - As of 9/11/2018) Map of Curb Ramps in Active Phases As of 08/31/2018;
Yes	Curb Ramp Locations Requested by Public (Requests Not Assigned to a Project - As of 9/11/2018) Map of Curb Ramps in Active Phases As of 08/31/2018;		

**San Francisco County Transportation Authority  
 Proposition K Sales Tax Program Project Information Form**

Project Delivery Milestones (Annual Allocation Example)	Status	Work	Start Date		End Date	
			Quarter	Fiscal Year	Quarter	Fiscal Year
Planning/Conceptual Engineering	0%	In-house	Q1-Jul-Aug-Sep	2019/20	Q1-Jul-Aug-Sep	2019/20
Environmental Studies (PA&ED)						
Right of Way						
Design Engineering (PS&E)	0%	In-house	Q2-Oct-Nov-Dec	2019/20	Q2-Oct-Nov-Dec	2019/20
Advertise Construction	0%	In-house	Q4-Apr-May-Jun	2019/20		
Start Construction (i.e. Award Contract)	0%	Contracted	Q2-Oct-Nov-Dec	2020/21		
Operations (i.e. paratransit)						
Open for Use	0%	Contracted			Q1-Jul-Aug-Sep	2021/22
Project Completion (means last eligible expenditure)					Q2-Oct-Nov-Dec	2021/22

**Comments/Concerns**

Schedule above is for the FY 19/20 allocation. A similar schedule is expected for subsequent allocations. SFPW's Annual Prop K requests for curb ramps will include the list of locations by supervisorial district where SFPW would be constructing curb ramps in the upcoming year.



San Francisco County Transportation Authority  
 Proposition K Sales Tax Program Project Information Form

<b>Project Name:</b>	Curb Ramps
----------------------	------------

Project Cost Estimate	Phase	Cost	Funding Source		
			Prop K	Other	
	Planning/Conceptual Engineering	\$ 102,690	\$ -	\$ -	\$ 102,690
	Environmental Studies (PA&ED)	\$ -	\$ -	\$ -	\$ -
	Right of Way	\$ -	\$ -	\$ -	\$ -
	Design Engineering (PS&E)	\$ 650,360	\$ -	\$ -	\$ 650,360
	Construction	\$ 6,163,134	\$ 6,163,134	\$ -	\$ -
	Operations (i.e. paratransit)	\$ -	\$ -	\$ -	\$ -
<b>Total Project Cost</b>		\$ 6,916,184	\$ 6,163,134	\$ 753,050	
<b>Percent of Total</b>			<b>89%</b>	<b>11%</b>	

Funding Plan - All Phases	Fund Source	Prop K Expenditure Line	Phase	Fund Source Status	Fiscal Year of Allocation (Programming Year)	Total Funding	Previous	Cash Flow for Prop K Only (i.e. Fiscal Year of Reimbursement)							
								2019/20	2020/21	2021/22	2022/23	2023/24	2024/25	2025/26	
	Prop K	41-Curb Ramps	Construction	Planned	2019/20	\$ 1,183,090	\$ -	\$ 25,000	\$ 750,000	\$ 408,090	\$ -	\$ -	\$ -	\$ -	\$ -
	Transportation Development Act Article 3		Design Engineering (PS&E)	Planned	2019/20	\$ 130,072	\$ -	\$ -	\$ -	\$ -	\$ -	\$ -	\$ -	\$ -	\$ -
	Transportation Development Act Article 3		Planning/Conceptual Engineering	Planned	2019/20	\$ 20,538	\$ -	\$ -	\$ -	\$ -	\$ -	\$ -	\$ -	\$ -	\$ -
	Prop K	41-Curb Ramps	Construction	Planned	2020/21	\$ 1,189,076	\$ -	\$ -	\$ 25,000	\$ 750,000	\$ 414,076	\$ -	\$ -	\$ -	\$ -
	Transportation Development Act Article 3		Design Engineering (PS&E)	Planned	2020/21	\$ 130,072	\$ -	\$ -	\$ -	\$ -	\$ -	\$ -	\$ -	\$ -	\$ -
	Transportation Development Act Article 3		Planning/Conceptual Engineering	Planned	2020/21	\$ 20,538	\$ -	\$ -	\$ -	\$ -	\$ -	\$ -	\$ -	\$ -	\$ -
	Prop K	41-Curb Ramps	Construction	Planned	2021/22	\$ 1,228,022	\$ -	\$ -	\$ -	\$ 25,000	\$ 750,000	\$ 453,022	\$ -	\$ -	\$ -
	Transportation Development Act Article 3		Design Engineering (PS&E)	Planned	2021/22	\$ 130,072	\$ -	\$ -	\$ -	\$ -	\$ -	\$ -	\$ -	\$ -	\$ -
	Transportation Development Act Article 3		Planning/Conceptual Engineering	Planned	2021/22	\$ 20,538	\$ -	\$ -	\$ -	\$ -	\$ -	\$ -	\$ -	\$ -	\$ -
	Prop K	41-Curb Ramps	Construction	Planned	2022/23	\$ 1,263,517	\$ -	\$ -	\$ -	\$ -	\$ 25,000	\$ 750,000	\$ 488,517	\$ -	\$ -
	Transportation Development Act Article 3		Design Engineering (PS&E)	Planned	2022/23	\$ 130,072	\$ -	\$ -	\$ -	\$ -	\$ -	\$ -	\$ -	\$ -	\$ -
	Transportation Development Act Article 3		Planning/Conceptual Engineering	Planned	2022/23	\$ 20,538	\$ -	\$ -	\$ -	\$ -	\$ -	\$ -	\$ -	\$ -	\$ -
	Prop K	41-Curb Ramps	Construction	Planned	2023/24	\$ 1,299,429	\$ -	\$ -	\$ -	\$ -	\$ -	\$ 25,000	\$ 750,000	\$ 524,429	\$ -
	Transportation Development Act Article 3		Design Engineering (PS&E)	Planned	2023/24	\$ 130,072	\$ -	\$ -	\$ -	\$ -	\$ -	\$ -	\$ -	\$ -	\$ -
	Transportation Development Act Article 3		Planning/Conceptual Engineering	Planned	2023/24	\$ 20,538	\$ -	\$ -	\$ -	\$ -	\$ -	\$ -	\$ -	\$ -	\$ -
	<b>Total By Fiscal Year</b>					<b>\$ 6,916,184</b>	<b>\$ -</b>	<b>\$ 25,000</b>	<b>\$ 775,000</b>	<b>\$ 1,183,090</b>	<b>\$ 1,189,076</b>	<b>\$ 1,228,022</b>	<b>\$ 1,238,517</b>	<b>\$ 524,429</b>	<b>\$ -</b>

<b>Comments</b>	
-----------------	--

2014 Prop K 5-Year Project List (FY 2014/15 - FY 2018/19)  
 Curb Ramps (EP 41)  
 Programming

Approved June 22, 2014

Agency	Project Name	Phase(s)	Status	Fiscal Year					Total
				2014/15	2015/16	2016/17	2017/18	2018/19	
DPW	Curb Ramps	CON	Programmed	\$725,632					\$725,632
DPW	Curb Ramps	CON	Programmed		\$763,969				\$763,969
DPW	Curb Ramps	CON	Programmed			\$804,084			\$804,084
DPW	Curb Ramps	CON	Programmed				\$846,055		\$846,055
DPW	Curb Ramps	CON	Programmed					\$889,968	\$889,968
<b>Programmed in 5YPP</b>				\$725,632	\$763,969	\$804,084	\$846,055	\$889,968	\$4,029,708
<b>Programmed in 2014 Strategic Plan</b>				\$725,632	\$763,969	\$804,084	\$846,055	\$889,968	\$4,029,708
<b>Cumulative Remaining Programming Capacity</b>				\$0	\$0	\$0	\$0	\$0	\$0

2014 Prop K 5-Year Project List (FY 2014/15 - FY 2018/19)  
 Curb Ramps (EP 41)  
 Cash Flow (\$) Maximum Annual Reimbursement  
 Approved June 22, 2014

Project Name	Phase	Fiscal Year							Total
		2014/15	2015/16	2016/17	2017/18	2018/19	2019/20		
Curb Ramps	CON	\$21,769	\$703,863						\$725,632
Curb Ramps	CON		\$22,919	\$741,050					\$763,969
Curb Ramps	CON			\$24,123	\$779,961				\$804,084
Curb Ramps	CON				\$25,382	\$820,673			\$846,055
Curb Ramps	CON					\$26,699			\$889,968
<b>Cash Flow Programmed in 5YPP</b>		\$21,769	\$726,782	\$765,172	\$805,343	\$847,372	\$863,269		\$4,029,708
<b>Total Cash Flow in 2014 Strategic Plan</b>		\$21,769	\$726,782	\$765,172	\$805,343	\$847,372	\$863,269		\$4,029,708
<b>Cumulative Remaining Cash Flow Capacity</b>		\$0	\$0	\$0	\$0	\$0	\$0	\$0	\$0



2014 Prop K 5-Year Project List (FY 2014/15 - FY 2018/19)

Curb Ramps (EP 41)

Programming and Allocations to Date

Pending November 27, 2018 Board

Agency	Project Name	Phase(s)	Status	Fiscal Year					Total
				2014/15	2015/16	2016/17	2017/18	2018/19	
DPW	Curb Ramps	CON	Allocated	\$725,632					\$725,632
DPW	Curb Ramps	CON	Deobligated	(\$2,692)					(\$2,692)
DPW	Curb Ramps	CON	Allocated		\$0	\$763,969			\$763,969
DPW	Curb Ramps	CON	Allocated				\$804,084		\$804,084
DPW	Curb Ramps <sup>1</sup>	CON	Programmed					\$994,383	\$994,383
<b>Programmed in 5YPP</b>				\$722,940	\$0	\$763,969	\$804,084	\$994,383	\$3,285,376
<b>Programmed in 2014 Strategic Plan</b>				\$725,632	\$763,969	\$804,084	\$846,055	\$889,968	\$4,029,708
<b>Cumulative Remaining Programming Capacity</b>				\$2,692	\$766,661	\$806,776	\$848,747	\$744,332	\$744,332

Programmed
Pending Allocation/Appropriation
Board Approved Allocation/Appropriation

**FOOTNOTES:**

<sup>1</sup> Comprehensive 2014 5YPP amendment concurrent with 2019 5YPP adoption (resolution XX, approved YY).  
 Curb Ramps: Reduced from \$846,055 to \$0. Staff capacity and resource availability impacted SFPW's ability to deliver the project in FY 15/16, which is the only prior year without an allocation in the 2014 5YPP. Funds will be used for annual curb ramp programming in FYs 18/19 - FY 23/24.  
 Curb Ramps: Increased from \$889,968 to \$994,383 in FY 18/19 for construction.

2014 Prop K 5-Year Project List (FY 2014/15 - FY 2018/19)  
 Curb Ramps (EP 41)

Cash Flow (\$) Maximum Annual Reimbursement

Pending November 27, 2018 Board

Project Name	Phase	Fiscal Year							Total
		2014/15	2015/16	2016/17	2017/18	2018/19	2019/20	2020/21	
Curb Ramps	CON	\$21,769	\$703,863						\$725,632
Curb Ramps	CON		(\$2,692)						(\$2,692)
Curb Ramps	CON			\$649,374	\$114,595				\$763,969
Curb Ramps	CON				\$201,021	\$603,063			\$804,084
Curb Ramps	CON					\$25,000	\$750,000	\$219,383	\$994,383
<b>Cash Flow Programmed in 5YPP</b>									
<b>Cash Flow in 2014 Strategic Plan</b>		\$21,769	\$701,171	\$649,374	\$315,616	\$628,063	\$750,000		\$3,065,993
<b>Cumulative Remaining Cash Flow Capacity</b>		\$0	\$726,782	\$765,172	\$805,343	\$847,372	\$863,269		\$4,029,708
			\$25,611	\$141,410	\$631,137	\$850,446	\$963,715		\$850,446

Programmed
Pending Allocation/ Appropriation
Board Approved Allocation/Appropriation

**Curb Ramp Locations Requested by Public  
(Requests Not Assigned to a Project - As of 9/11/2018)**

**E10P-17**

<b>Location</b>	<b>District</b>
12th Ave and Geary Blvd	1
25th Ave and Geary Blvd	1
27th Ave and Geary Blvd	1
28th Ave and Geary Blvd	1
29th Ave and Geary Blvd	1
31st Ave and Geary Blvd	1
33rd Ave and Geary Blvd	1
Anza St and Beaumont Ave	1
Anza St and Wood St	1
Arguello Blvd and Cabrillo St	1
Balboa St and 45th Ave	1
Cabrillo St and 11th Ave	1
Cabrillo St and 38th Ave	1
Cabrillo St and 45th Ave	1
Chabot Ter and Turk Blvd	1
Clayton St and Fulton St	1,5
Clement St and 21st Ave	1
Clement St and 23rd Ave	1
Clement St and 24th Ave	1
Clement St and 30th Ave	1
Kittredge Ter and Turk Blvd	1
Parker Ave and Turk Blvd	1
Roselyn Ter and Turk Blvd	1
Tamalpais Ter and Turk Blvd	1
Temescal Ter and Turk Blvd	1
Arbol Ln and Lyon St \ Turk Blvd	2,5
Austin St and Van Ness Ave	2
Baker St and Bay St	2
Bay St and Broderick St	2
Beach St and Polk St	2
Broadway and Scott St	2
Broderick St and Ellis St	2,5
Broderick St and Sacramento St	2
Broderick St and Turk St	2,5
California St and Presidio Ave	2
California St and Scott St	2
California St and Walnut St	2
Central Ave and Turk Blvd	2,5
Divisadero St and Jackson St	2
Fillmore St and Pixley St	2
Laurel St and Mayfair Dr	2
Lyon St and Ofarrell St \ Sonora Ln	2
Lyon St and Sacramento St	2
Manzanita Ave and Mayfair Dr	2

# E10P-18

## Curb Ramp Locations Requested by Public (Requests Not Assigned to a Project - As of 9/11/2018)

Location	District
Mayfair Dr and Spruce St	2
Curb Ramp Locations Requested by Public	2
Octavia St and Pine St	2,5
Polk St and Union St	2,3
Sacramento St and Walnut St	2
Spruce St from California St to Mayfair Dr	2
August Aly and Green St	3
Battery St and Jackson St	3
Battery St and Lombard St \ The Embarcadero	3
Battery St and Pine St	3
Beach St and Grant Ave \ The Embarcadero	3
Beach St and Taylor St	3
Broadway and Jones St	3
Bush St and Grant Ave	3
Bush St and Kearny St	3
Bush St and Sansome St	3
Bush St and Stockton St	3
California St and Drumm St	3
California St and Hyde St	3
California St and Kearny St	3
California St and Leidesdorff St	3
California St and Montgomery St	3
California St and Sansome St	3
Castle St and Green St	3
Castle St and Union St	3
Cedar St and Polk St	3,6
Clay St and Drumm St	3
Clay St and Grant Ave	3
Clay St and Kearny St	3
Clay St and Leidesdorff St	3
Clay St and Montgomery St	3
Clay St and Sansome St	3
Columbus Ave and Filbert St \ Via Bufano	3
Columbus Ave and Greenwich St \ Scotland St	3
Columbus Ave and Jackson St	3
Columbus Ave and Lombard St	3
Columbus Ave and Mason St	3
Columbus Ave and Montgomery St \ Washington St	3
Columbus Ave and Pacific Ave	3
Columbus Ave and Vallejo St	3
Cyril Magnin St and Eddy St	3,6
Cyrus Pl and Broadway	3
Davis St and Beale St \ Market St \ Pine St	3,6
Davis St and California St	3

**Curb Ramp Locations Requested by Public  
(Requests Not Assigned to a Project - As of 9/11/2018)**

**E10P-19**

<b>Location</b>	<b>District</b>
Drumm St and Jackson St	3
Edgardo Pl and Grant Ave	3
Ellis St and Mason St	3,6
Fella Pl and Powell St	3
Filbert St and Powell St	3
Front St and Pine St	3
Front St and Sacramento St	3
Geary St and Grant Ave	3
Geary St and Leavenworth St	3,6
Geary St and Taylor St	3,6
Gerke Aly and Grant Ave	3
Gold St and Sansome St	3
Grant Ave and Jackson St	3
Grant Ave and Pacific Ave	3
Grant Ave and Pine St	3
Grant Ave and Post St	3
Grant Ave and Sacramento St	3
Grant Ave and Sutter St	3
Grant Ave and Union St	3
Grant Ave and Washington St	3
Green St and The Embarcadero	3
Greenwich St and Jansen St	3
Greenwich St and Mason St	3
Greenwich St and Taylor St	3
Halleck St and Leidesdorff St	3
Jackson St and Montgomery St	3
Jackson St and Polk St	3
Jackson St and Sansome St	3
Jackson St and Trenton St	3
Jansen St and Lombard St	3
Jones St and Post St	3
Kearny St and Pine St	3
Kearny St and Post St	3
Kearny St and Sacramento St	3
Kearny St and Sutter St	3
Larkin St and Sutter St	3
Leidesdorff St and Sacramento St	3
Lombard St and Taylor St	3
Montgomery St and Pine St	3
Montgomery St and Sacramento St	3
Montgomery St and Sutter St	3
Ofarrell St and Powell St	3
Ofarrell St and Taylor St	3,6
Pacific Ave and Powell St	3

# E10P-20

## Curb Ramp Locations Requested by Public (Requests Not Assigned to a Project - As of 9/11/2018)

Location	District
Pacific Ave and Sansome St	3
Pacific Ave and Stockton St	3
Pfeiffer St and Stockton St	3
Pine St and Sansome St	3
Post St and Powell St	3
Post St and Stockton St	3
Post St and Taylor St	3
Powell St and Sutter St	3
Powell St and Vallejo St	3
Sacramento St and Sansome St	3
Stockton St and Stockton Tunn \ Sutter St	3
Walter U Lum Pl and Washington St	3
17th Ave and Irving St	4,5
19th Ave and Lawton St	4,7
19th Ave and Moraga St	4,7
22nd Ave and Judah St	4
22nd Ave and Lawton St	4
30th Ave and Judah St	4
39th Ave and Skyline Blvd \ Sloat Blvd	4,7
39th Ave and Vicente St	4
41st Ave and Wawona St	4
42nd Ave and Sloat Blvd	4
42nd Ave and Wawona St	4
44th Ave and Ortega St	4
44th Ave and Sloat Blvd	4
45th Ave and Judah St	4
45th Ave and Sloat Blvd	4,7
46th Ave and Judah St	4
46th Ave and Sloat Blvd	4,7
46th Ave and Wawona St	4
Constanso Way and Escondido Ave	4
Cutler Ave and 47th Ave	4
Judah St and La Playa	4
Judah St and La Playa	4
17th St and Shrader St	5
Ashbury St and Frederick St	5,8
Baker St and Fell St	5
Baker St and Golden Gate Ave	5
Baker St and Hayes St	5
Belvedere St and Haight St	5
Broderick St and Golden Gate Ave	5
Broderick St and Grove St	5
Buchanan St and End	5
Central Ave and Grove St	5

**Curb Ramp Locations Requested by Public  
(Requests Not Assigned to a Project - As of 9/11/2018)**

**E10P-21**

<b>Location</b>	<b>District</b>
Cole St and Rivoli St	5
Crown Ter and Twin Peaks Blvd	5,8
Divisadero St and Oak St	5
Elm St and Pierce St	5
Fillmore St and Golden Gate Ave	5
Fulton St and Fillmore St	5
Golden Gate Ave and Lyon St	5
Golden Gate Ave and Webster St	5
Gough St and Haight St	5
Grattan St and Shrader St	5
Graystone Ter and Twin Peaks Blvd	5,8
Grove St and Webster St	5
Laguna St and Linden St	5
Laussat St and Webster St	5
Mcallister St from Laguna St to Webster St	5
Oak St and Van Ness Ave	5
Octavia St and Sutter St	5
Ofarrell St and Steiner St	5
Post St and Scott St	5
Sutter St and Webster St	5
01st St and Harrison St \ I-80 E On Ramp	6
01st St and Jessie St	6
01st St and Mission St	6
02nd St and Howard St	6
02nd St and Mission St	6
03rd St and Mission St	6
03rd St and Saint Francis Pl	6
05th St and Harrison St \ I-80 W Off Ramp	6
05th St and Minna St	6
05th St and Mission St	6
06th St and Golden Gate Ave \ Market St \ Taylor St	6
06th St and Harrison St	6
08th St and Minna St	6
09th St and Mission St	6
11th St and Mission St	6
12th St and Mission St \ Otis St \ South Van Ness Ave	6
Alice B Toklas Pl and Myrtle St \ Polk St	6
Annie St and Jessie St	6
Beale St and Bryant St	6
Beale St and Mission St	6
Brannan St and The Embarcadero	6
Brush Pl and Hallam St	6
Bryant St and 05th St \ I-80 E On Ramp	6
Bryant St and Rincon St	6

# E10P-22

## Curb Ramp Locations Requested by Public (Requests Not Assigned to a Project - As of 9/11/2018)

Location	District
Clyde St and Townsend St	6
Decatur St and Bryant St	6
Ecker St and Stevenson St	6
Eddy St and Hyde St	6
Eddy St and Leavenworth St	6
Eddy St and Taylor St	6
Ellis St and Jones St	6
Ellis St and Leavenworth St	6
Ellis St and Taylor St	6
Folsom St and Spear St	6
Folsom St and The Embarcadero	6
Fremont St and Howard St	6
Fremont St and Mission St	6
Golden Gate Ave and Hyde St	6
Golden Gate Ave and Larkin St	6
Harrison St and Main St	6
Harrison St and Morris St	6
Harrison St and Oak Grove St	6
Harrison St and The Embarcadero	6
Howard St and Main St	6
Howard St and Spear St	6
Illinois St from 16th St to Mariposa St \ Terry A Francois Blvd	6
Jones St and Turk St	6
Larkin St and Turk St	6
Larkin St and Willow St	6
Main St and Mission St	6
Market St and Mason St \ Turk St	6
Mary St and Natoma St	6
Mint St and Mission St	6
Mission St and New Montgomery St	6
Polk St and Turk St	6
Taylor St and Turk St	6
08th Ave and Moraga St	7
11th Ave and Noriega St	7
14th Ave and Noriega St	7
14th Ave and Taraval St	7
19th Ave and Eucalyptus Dr	7
19th Ave and Rossmoor Dr	7
20th Ave and End	7
20th Ave and Eucalyptus Dr	7
Alton Ave and Pacheco St	7
Alton Ave and Pacheco St \ Unnamed 033	7
Aquavista Way and Marview Way	7
Berkshire Way and Lake Merced Blvd \ Lakeshore Dr	7



**Curb Ramp Locations Requested by Public  
(Requests Not Assigned to a Project - As of 9/11/2018)**

**E10P-23**

<b>Location</b>	<b>District</b>
Borica St and Entrada Ct	7
Buckingham Way from 19th Ave to Winston Dr	7
Cerritos Ave and Ocean Ave \ Westgate Dr	7
Circular Ave and Baden St	7
Circular Ave and Detroit St \ Judson Ave \ Paulding St	7
Clarendon Ave and Panorama Dr	7
Congo St and Monterey Blvd	7
Country Club Dr and Lakeshore Dr	7
Darien Way and Aptos Ave	7
Darien Way and Kenwood Way \ Upland Dr	7
Darien Way and Northgate Dr	7
De Montfort Ave and Capitol Ave	7
Eucalyptus Dr from Gladiolus Ln to 19th Ave	7
Everglade Dr and Gellert Dr	7
Farview Ct and Marview Way	7
Forest Hill Path and Lopez Ave \ Pacheco St	7
Junipero Serra Blvd and Winston Dr	7
Kenwood Way and Keystone Way	7
Laguna Honda Blvd and Portola Dr	7
Lakeshore Dr and Ocean Ave	7
Magellan Ave and Montalvo Ave	7
Magellan Ave and Pacheco St	7
Magellan Ave and Sola Ave	7
Manor Dr and Upland Dr	7
Marcela Ave and Pacheco St	7
Marview Way and Panorama Dr	7
Marview Way and Skyview Way	7
Miraloma Dr and Ravenwood Dr \ Yerba Buena Ave	7
Ocean Ave and Victoria St	7
Ocean Ave from Woodacre Dr to Lagunitas Dr	7
San Anselmo Ave and Santa Clara Ave	7
Santa Clara Ave and Terrace Dr	7
14th St and Ramona Ave	8
14th St and Rosemont Pl	8
16th St and Albion St	8
16th St and Market St \ Noe St	8
17th St and Hartford St	8
24th St and Valencia St	8,9
Alvarado St and Noe St	8
Amber Dr and Duncan St \ Red Rock Way	8
Ames St and 22nd St	8
Arlington St and Natick St \ San Jose Av Off Ramp \ Wilder St	8
Bosworth St and Marsily St	8
Bosworth St and Milton St	8

# E10P-24

## Curb Ramp Locations Requested by Public (Requests Not Assigned to a Project - As of 9/11/2018)

Location	District
Bosworth St and Rousseau St	8
Church St and 17th St	8
Church St and 20th St	8
Day St and Sanchez St	8
Dearborn St and Bird St	8
Fairmount St and Miguel St	8
20th St and Florida St	9
20th St and Lexington St	9
21st St and York St	9
23rd St and Shotwell St	9
25th St and Shotwell St	9
26th St and Folsom St	9
30th St and Mission St	9
Amherst St and Bacon St	9
Amherst St and Silliman St	9
Appleton Ave and Holly Park Cir	9
Bacon St and Brussels St	9
Bay Shore Blvd and Industrial St \ Industrial St On Ramp	9,10
Bonview St and Eugenia Ave	9
Bowdoin St and Mansell St	9,10
Brussels St and Mansell St	9,10
Bryant St and 26th St	9
Capp St and 23rd St	9
Colby St and Mansell St	9
Cortland Ave and Prospect Ave	9
Dartmouth St and Mansell St	9
Girard St and Mansell St	9,10
Goettingen St and Mansell St	9,10
Hamilton St and Mansell St	9,10
Mansell St and Somerset St	9,10
Peralta Ave and Ripley St \ Samoset St	9
Precita Ave and Treat Ave	9
Princeton St and Tulane St	9
Prospect Ave and Virginia Ave	9
Putnam St and Tompkins Ave	9
Shotwell St and Stoneman St	9
Virginia Ave and Winfield St	9
03rd St and Gilman Ave \ Paul Ave	10
15th St and San Bruno Ave	10
19th St and York St	10
20th St and Kansas St	10
23rd St and Iowa St	10
23rd St and Minnesota St	10
23rd St and Pennsylvania Ave	10

**Curb Ramp Locations Requested by Public  
(Requests Not Assigned to a Project - As of 9/11/2018)**

**E10P-25**

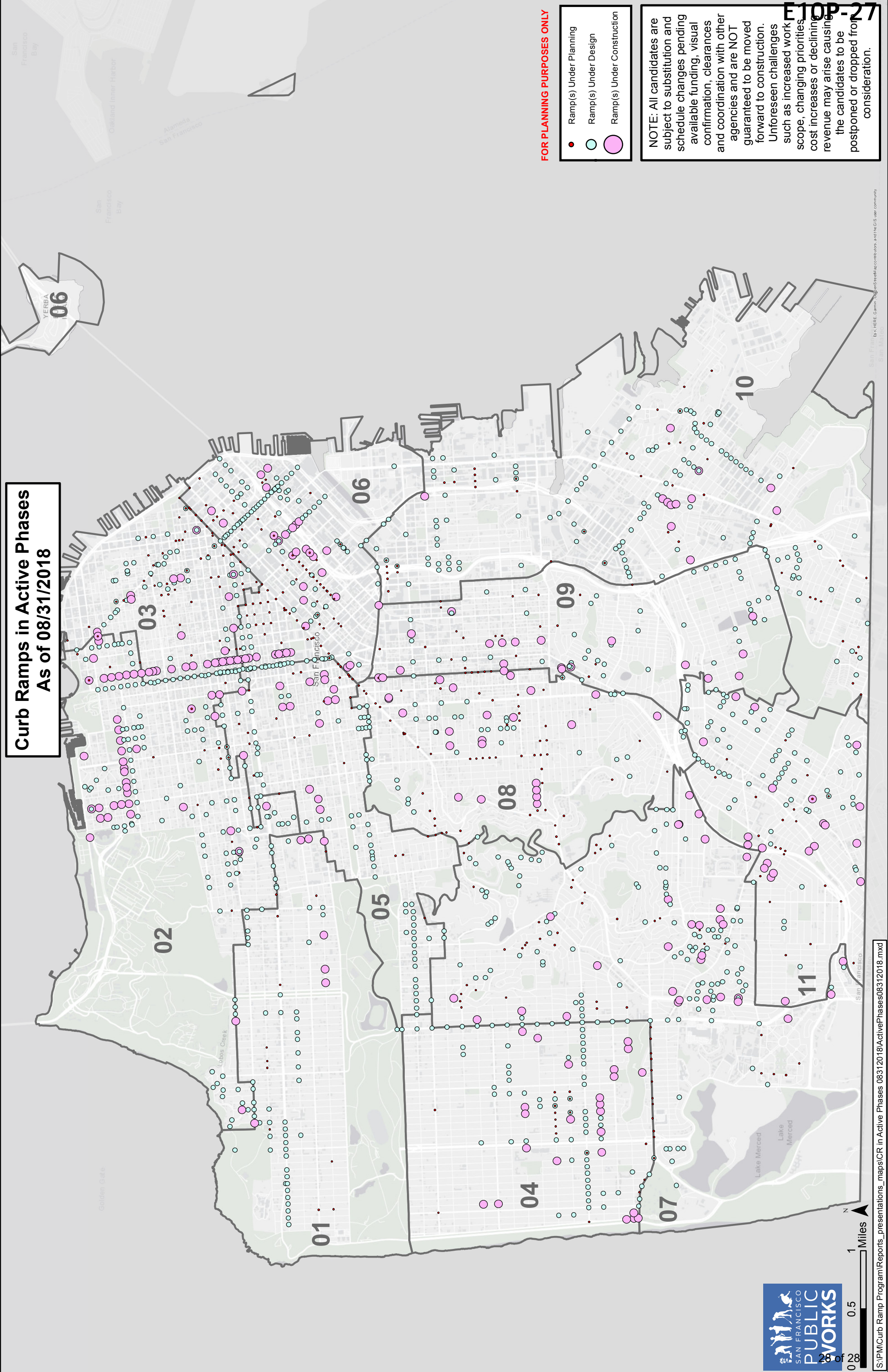
<b>Location</b>	<b>District</b>
23rd St and Rhode Island St	10
23rd St and Tennessee St	10
25th St and Pennsylvania Ave	10
25th St and Vermont St	10
26th St and Rhode Island St	10
Alpha St and Goettingen St \ Wilde Ave	10
Ankeny St and Mill St	10
Argonaut Ave and Burr Ave	10
Arleta Ave and Bay Shore Blvd \ San Bruno Ave	10
Augusta St and Bay Shore Blvd \ Boutwell St	10
Bay Shore Blvd Off Ramp and Hwy 101 S Off Ramp \ Potrero Ave	10
Bay View St and Bayview Cir \ Newhall St	10
Campbell Ave and Goettingen St	10
Carter St and Geneva Ave \ Walbridge St	10
Division St and King St	10
Earl St and Kirkwood Ave	10
Egbert Ave and Ingalls St	10
Gilman Ave and Griffith St	10
Goettingen St and Ward St	10
Harbor Rd and Northridge Rd	10
Hudson Ave and Phelps St	10
La Grande Ave and Russia Ave	10,11
Latona St and Thornton Ave	10
Mariposa St and Texas St	10
Mckinnon Ave and Mendell St	10
Mckinnon Ave and Newhall St	10
Mercury St and Thornton Ave	10
Mercury St and Thornton Ave	10
Quint St and Scotia Ave	10
Quint St and Thornton Ave \ Waterville St	10
Robblee Ave and Thomas Ave	10
Watchman Way from Missouri St to End	10
Arago St and Paulding St	11
Athens St and France Ave	11
Avalon Ave and London St	11
Avalon Ave and Paris St	11
Balhi Ct and Cayuga Ave	11
Baywood Ct and Geneva Ave	11
Broad St and Farragut Ave \ San Jose Ave	11
Capistrano Ave and Santa Ynez Ave	11
Cayuga Ave and Santa Ynez Ave	11
Cordova St and Munich St	11
Delano Ave and Santa Ynez Ave	11
Edgar Ave and Niagara Ave	11

# E10P-26

## Curb Ramp Locations Requested by Public (Requests Not Assigned to a Project - As of 9/11/2018)

<b>Location</b>	<b>District</b>
Ellington Ave and Naglee Ave	11
Geneva Ave and Gloria Ct	11
Geneva Ave and Moscow St \ South Hill Blvd	11
Getz St and Grafton Ave \ Mount Vernon Ave	11
Guttenberg St and Pretor Way	11
Italy Ave and London St	11
Lobos St and Orizaba Ave	11
Madrid St from Avalon Ave to Excelsior Ave	11
Mount Vernon Ave and Nahua Ave	11
Mount Vernon Ave and San Jose Ave	11
Nahua Ave and Niagara Ave \ San Jose Ave	11
Nahua Ave and Shawnee Ave	11
San Jose Ave and Seneca Ave	11
San Jose Ave and Theresa St	11

# Curb Ramps in Active Phases As of 08/31/2018



**FOR PLANNING PURPOSES ONLY**

- Ramp(s) Under Planning
- Ramp(s) Under Design
- Ramp(s) Under Construction

**NOTE:** All candidates are subject to substitution and schedule changes pending available funding, visual confirmation, clearances and coordination with other agencies and are NOT guaranteed to be moved forward to construction. Unforeseen challenges such as increased work scope, changing priorities, cost increases or declining revenue may arise causing the candidates to be postponed or dropped from consideration.

**E10P-27**

Golden Gate  
San Francisco Bay  
Oakland Inner Harbor  
Alameda  
San Francisco

YERBA 06

06

03

02

01

05

04

08

09

10

11

San Francisco

San Francisco Bay

Oakland Inner Harbor

Alameda

San Francisco

YERBA 06

06

03

02

01

05

04

08

09

10

11

San Francisco

San Francisco Bay

Oakland Inner Harbor

Alameda

San Francisco

YERBA 06

06

03

02

01

05

04

08

09

10

11

San Francisco

San Francisco Bay

Oakland Inner Harbor

Alameda

San Francisco

YERBA 06

06

03

02

01

05

04

08

09

10

11

San Francisco

San Francisco Bay

Oakland Inner Harbor

Alameda

San Francisco

YERBA 06

06

03

02

01

05

04

08

09

10

11

San Francisco

San Francisco Bay

Oakland Inner Harbor

Alameda

San Francisco

YERBA 06

06

03

02

01

05

04

08

09

10

11

San Francisco

San Francisco Bay

Oakland Inner Harbor

Alameda

San Francisco

YERBA 06

06

03

02

01

05

04

08

09

10

11

San Francisco

San Francisco Bay

Oakland Inner Harbor

Alameda

San Francisco

YERBA 06

06

03

02

01

05

04

08

09

10

11

San Francisco

San Francisco Bay

Oakland Inner Harbor

Alameda

San Francisco

YERBA 06

06

03

02

01

05

04

08

09

10

11

San Francisco

San Francisco Bay

Oakland Inner Harbor

Alameda

San Francisco

YERBA 06

06

03

02

01

05

04

08

09

10

11

San Francisco

San Francisco Bay

Oakland Inner Harbor

Alameda

San Francisco

YERBA 06

06

03

02

01

05

04

08

09

10

11

San Francisco

San Francisco Bay

Oakland Inner Harbor

Alameda

San Francisco

YERBA 06

06

03

02

01

05

04

08

09

10

11

San Francisco

San Francisco Bay

Oakland Inner Harbor

Alameda

San Francisco

YERBA 06

06

03

02

01

05

04

08

09

10

11

San Francisco

San Francisco Bay

Oakland Inner Harbor

Alameda

San Francisco

YERBA 06

06

03

02

01

05

04

08

09

10

11

San Francisco

San Francisco Bay

Oakland Inner Harbor

Alameda

San Francisco

YERBA 06

06

03

02

01

05

04

08

09

10

11

San Francisco

San Francisco Bay

Oakland Inner Harbor

Alameda

San Francisco

YERBA 06

06

03

02

01

05

04

08

09

10

11

San Francisco

San Francisco Bay

Oakland Inner Harbor

Alameda

San Francisco

YERBA 06

06

03

02

01

05

04

08

09

10

11

San Francisco

San Francisco Bay

Oakland Inner Harbor

Alameda

San Francisco

YERBA 06

06

03

02

01

05

04

08

09

10

11

San Francisco

San Francisco Bay

Oakland Inner Harbor

Alameda

San Francisco

YERBA 06

06

03

02

01

05

04

08

09

10

11

San Francisco

San Francisco Bay

Oakland Inner Harbor

Alameda

San Francisco

YERBA 06