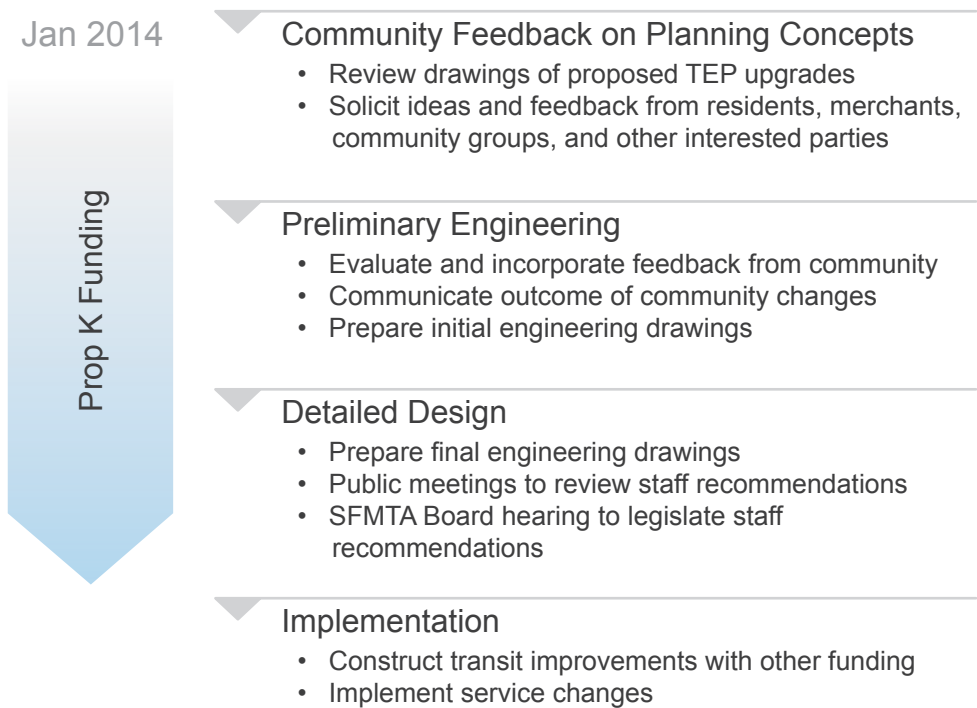




The Transit Effectiveness Project (TEP) is currently under environmental review and includes approximately \$150 million in capital improvements along 11 corridors being reviewed at the project level. The SFMTA is requesting \$13.1 million in Prop K funding to conduct preliminary engineering and detailed design along these 11 corridors. The funding is critical to support a community process that will identify which environmentally cleared projects will be implemented. Prop K funds will also allow the creation of detailed construction drawings for these projects.

### COMMUNITY ENGAGEMENT

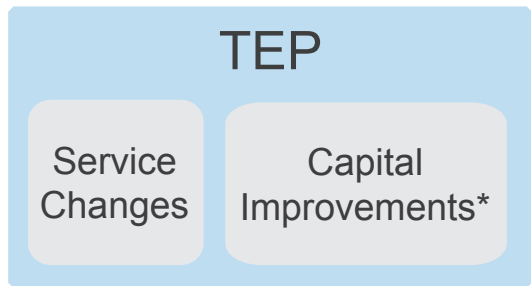


#### Prop K Funding Summary

- » Capital projects to save 20% transit travel time on major corridors and improve reliability
- » Over 115 transit and pedestrian bulbs
- » Over 50 blocks of transit-only lanes
- » Extending up to 25 transit boarding islands
- » Up to 10 new transit boarding islands
- » Up to 30 new traffic signals

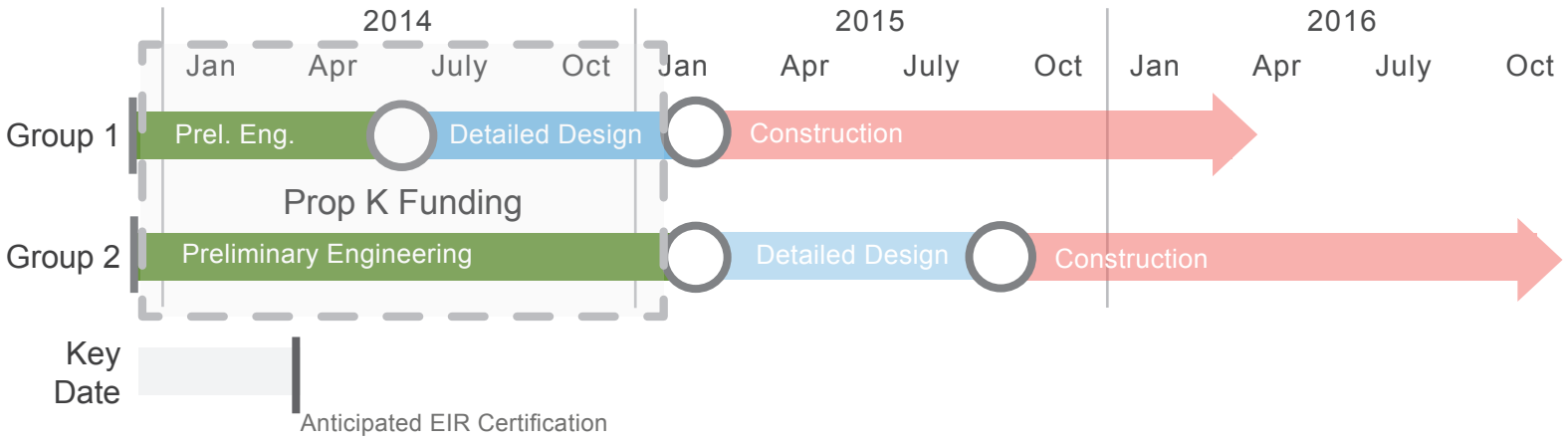
### IMPLEMENTATION APPROACH

The Prop K capital request is necessary to advance engineering design and to support the public engagement process during the environmental phase to enable projects to immediately proceed to construction following certification of EIR, legislation, and securing funding. Budget will be used to cover all staff costs of the Capital Programs & Construction, Sustainable Streets, and Department of Public Works that are accrued for the purpose of carrying TEP-related preliminary engineering and detailed design.



\* Prop K request will fund design of capital projects

### TIMELINE





### HOW TO ENGAGE

Your participation in the Transit Effectiveness Project is important. Please visit our website, [www.sftep.com](http://www.sftep.com), to learn more about how to get involved by attending a meeting, requesting a presentation, or to receive email updates.



#### Group 1

- A** 5-Fulton Segments 2&3
- B** 8X-Bayshore Express
- C** 9-San Bruno Segments 1&2
- D** 10-Sansome Contraflow Lane
- E** 14-Mission Segment 2
- F** 30-Stockton Segment 2
- G** 71-Haight Noriega
- H** N-Judah

#### Group 2

- I** 14-Mission Segments 1&3
- J** 22-Fillmore Segment 1a
- K** 28-19th Avenue Segment 1
- L** J-Church
- M** L-Taraval

#### Contact

Sean Kennedy, TEP  
Planning Manager  
  
415.701.4717  
[sean.kennedy@sfmta.com](mailto:sean.kennedy@sfmta.com)

\* Group 3 projects will be implemented after completion of other TEP projects and with the availability of suitable funding sources.