

Potrero Hill Neighborhood Transportation Plan

Plans and Programs Committee
Agenda Item 5



SAN FRANCISCO COUNTY TRANSPORTATION AUTHORITY

June 16, 2015

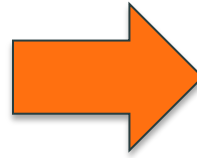
Study Area



Rebuild Potrero

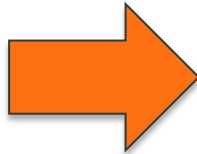


606 units, 1,200 residents
(public housing)



Up to 1,600 Homes + Retail

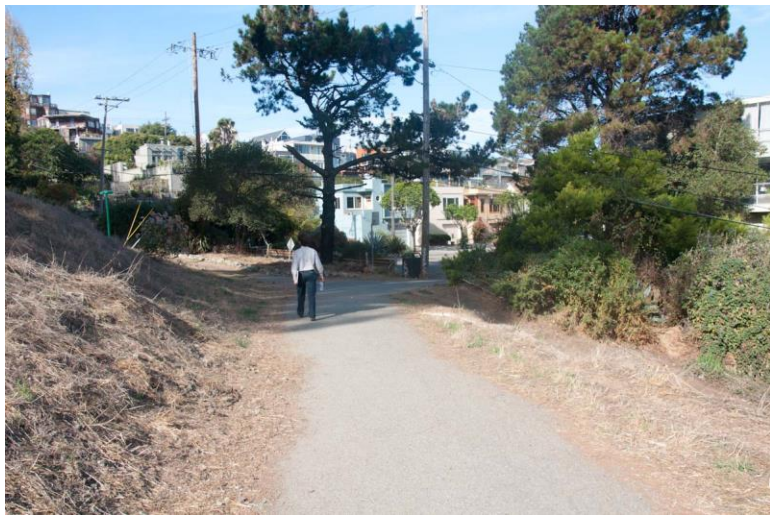
- ▶ All residents remain on site during and after construction
- ▶ Up to 500 additional affordable units



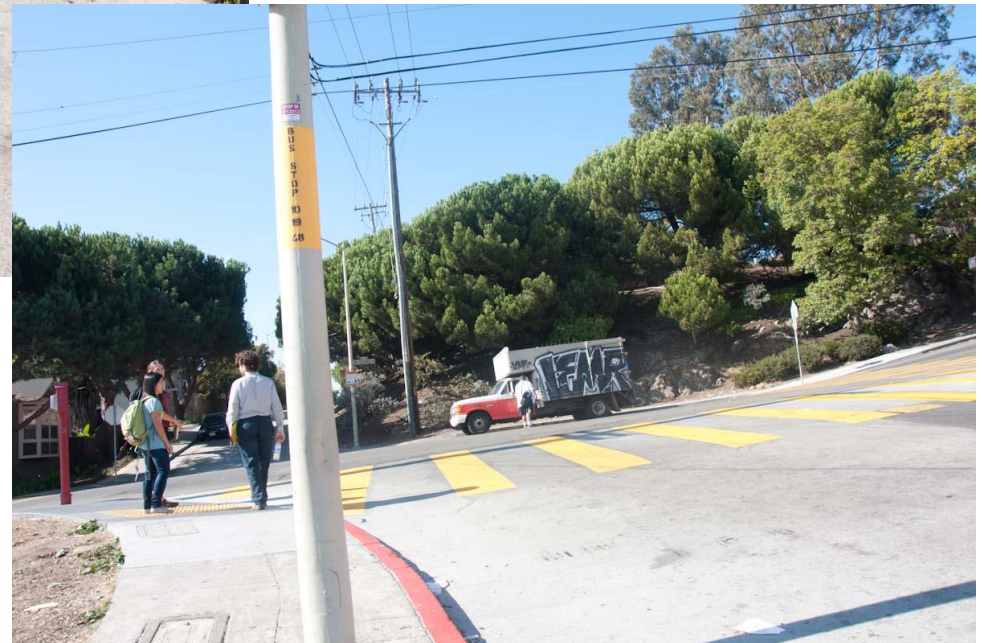
Key Challenges – Walkability/ Connectivity/Ped Safety



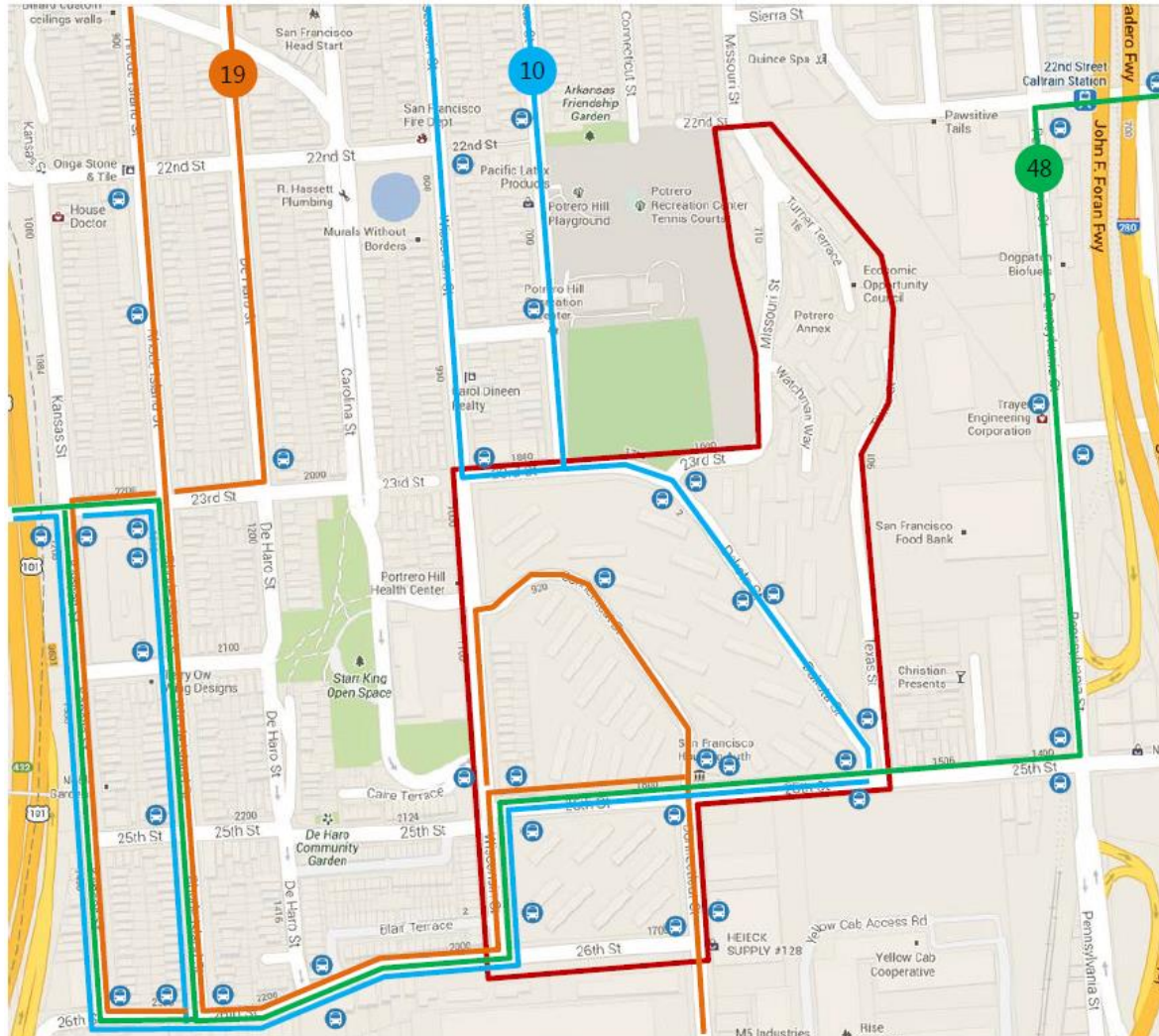
Key Challenges – Security/Lighting



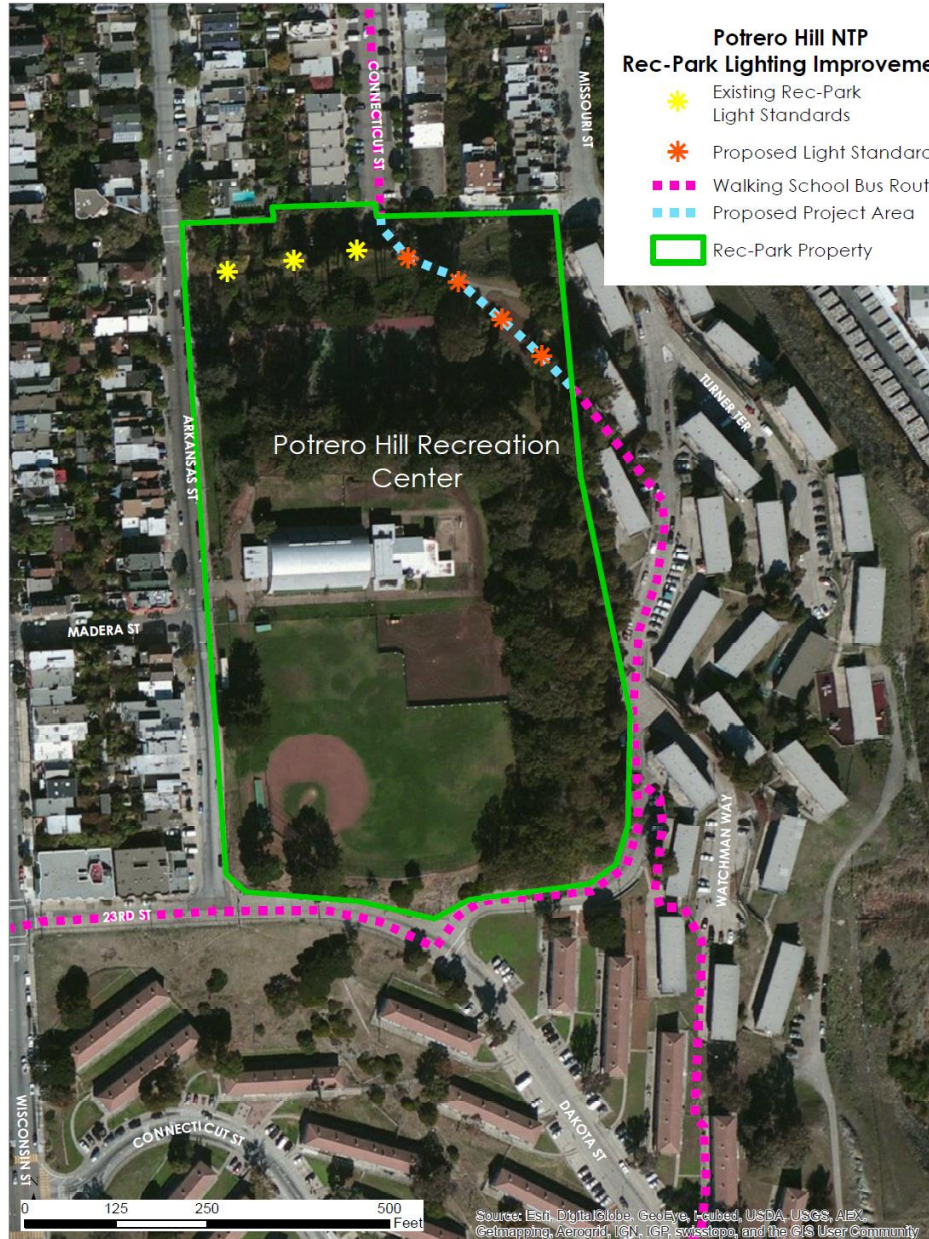
Key Challenges – Lack of Transit Stop Amenities



Finding – Multiple Transit Routes Serving Site, but Challenges Remain



Project Concept: Pedestrian Lighting



Project Concept: Traffic Calming + Stop Amenities



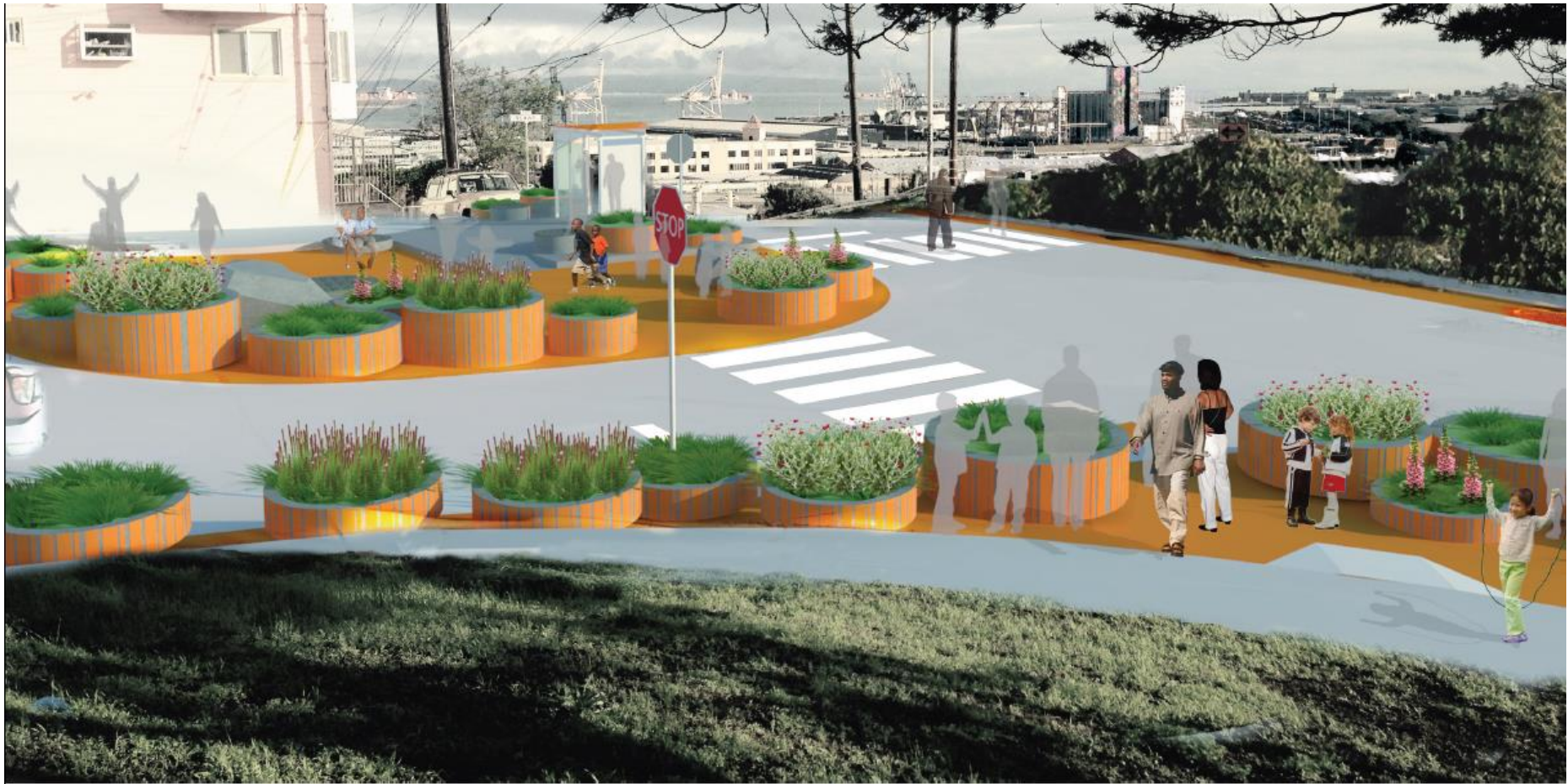
25th and Dakota



25th and Dakota



25th and Dakota



Traffic Calming + Stop Amenities



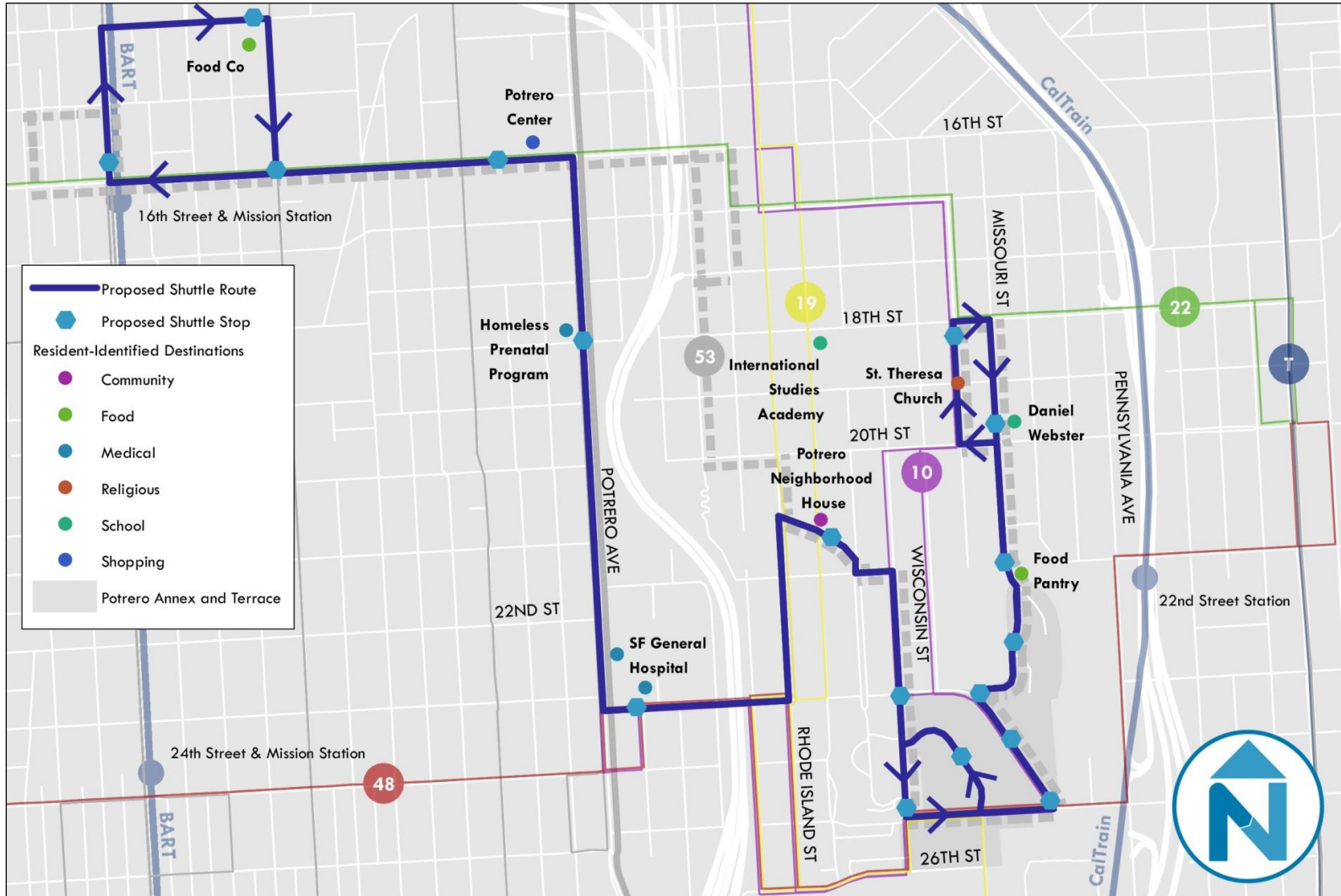
25th and Connecticut



25th and Connecticut



Shuttle



Very involved community partner with high capacity



Next Steps



- ▶ **Final Report to be adopted in May/June Board Cycle**
- ▶ **Planning Department (Pavement to Parks) to lead final design implementation of traffic calming projects (fully funded)**
 - ▶ **Implementation in early 2016**
- ▶ **Rec-Park to lead ped lighting project (fully funded)**
 - ▶ **Implementation in 2016**
- ▶ **BRIDGE to further refine shuttle project and funding**

Thank you! Questions?



SAN FRANCISCO COUNTY TRANSPORTATION AUTHORITY