

Geneva-Harney Bus Rapid Transit Feasibility Study

Plans and Programs Committee
Agenda Item 9



SAN FRANCISCO COUNTY TRANSPORTATION AUTHORITY
July 21, 2015

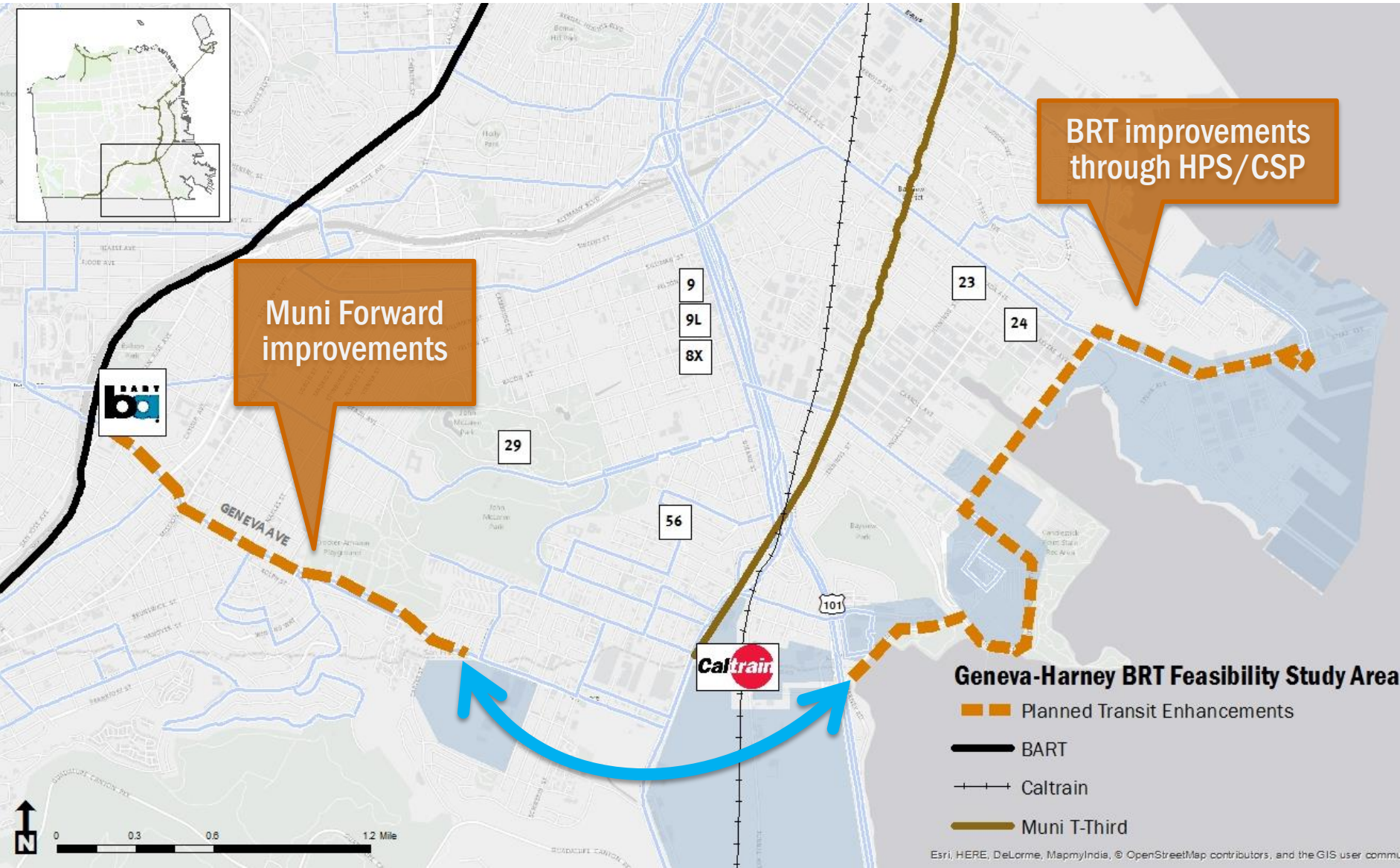
Project Context

Overview > Near-Term > What We Heard > Long-Term > Cost Estimates > Findings & Next Steps



Muni Forward improvements

BRT improvements through HPS/CSP



Geneva-Harney BRT Feasibility Study Area

- Planned Transit Enhancements
- BART
- Caltrain
- Muni T-Third

Alternative 1: 4-Lane Geneva

Overview > Near-Term > What We Heard > Long-Term > Cost Estimates > Findings & Next Steps



Muni Forward improvements

Short segment w/o dedicated bus lane (all alts)

HPS/CSP Improvements

Arleta

4-lanes

Sunnydale/Caltrain

Executive Park

Santos

Oriente

101

Alternative 2: 2-Lane Geneva

Overview > Near-Term > What We Heard > Long-Term > Cost Estimates > Findings & Next Steps



Alternative 3: Beatty Avenue

Overview > Near-Term > What We Heard > Long-Term > Cost Estimates > Findings & Next Steps



Muni Forward improvements

Short segment w/o dedicated bus lane (all alts)

2-lanes

Santos

Oriente

Sunnydale

Caltrain

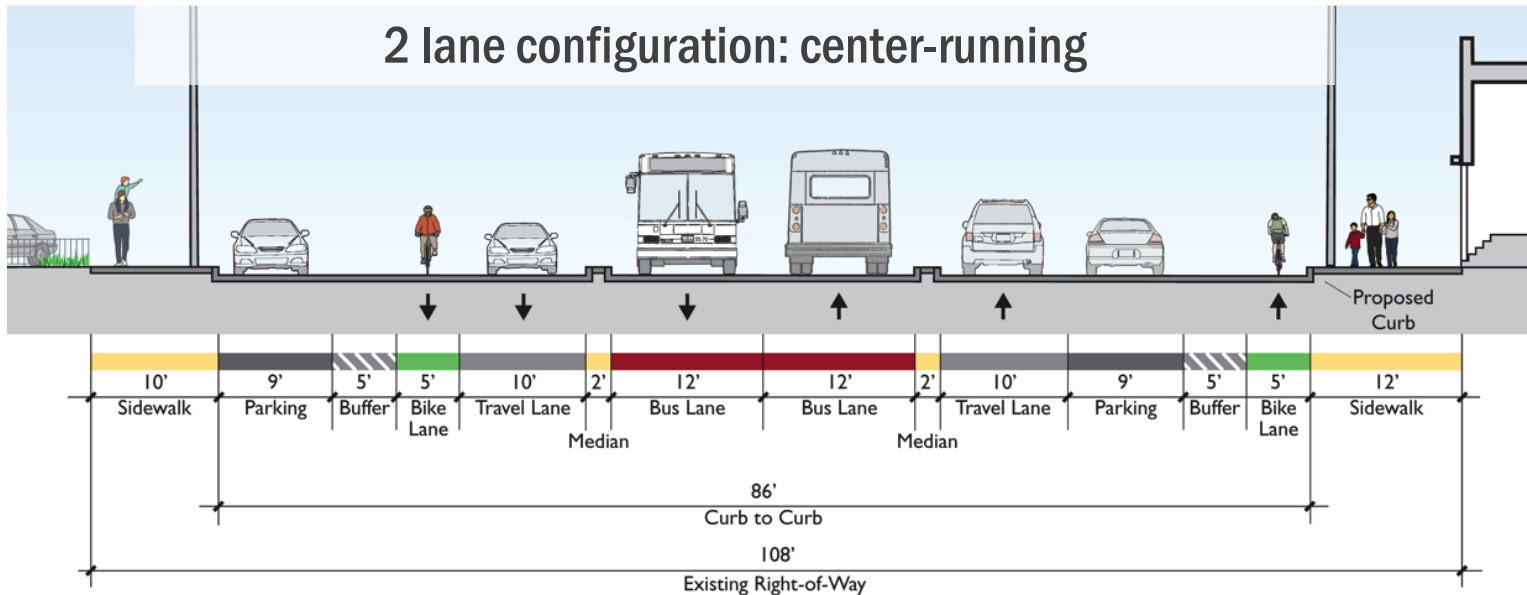
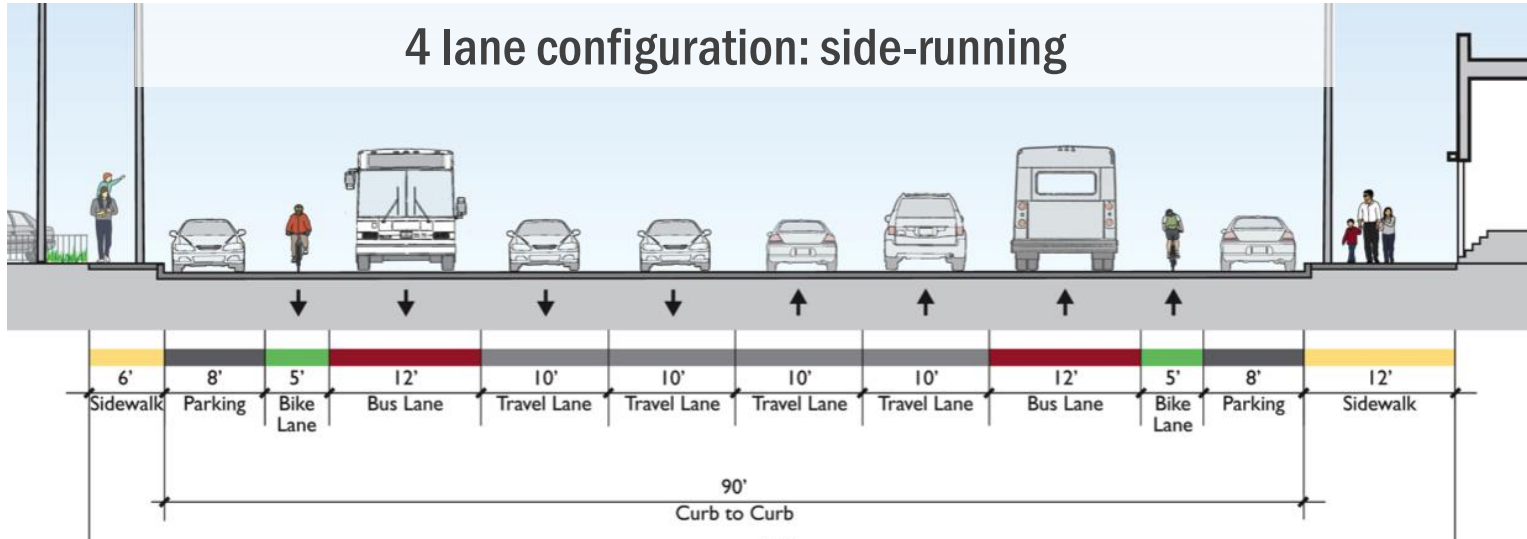
Arleta

Executive Park

HPS/CSP Improvements

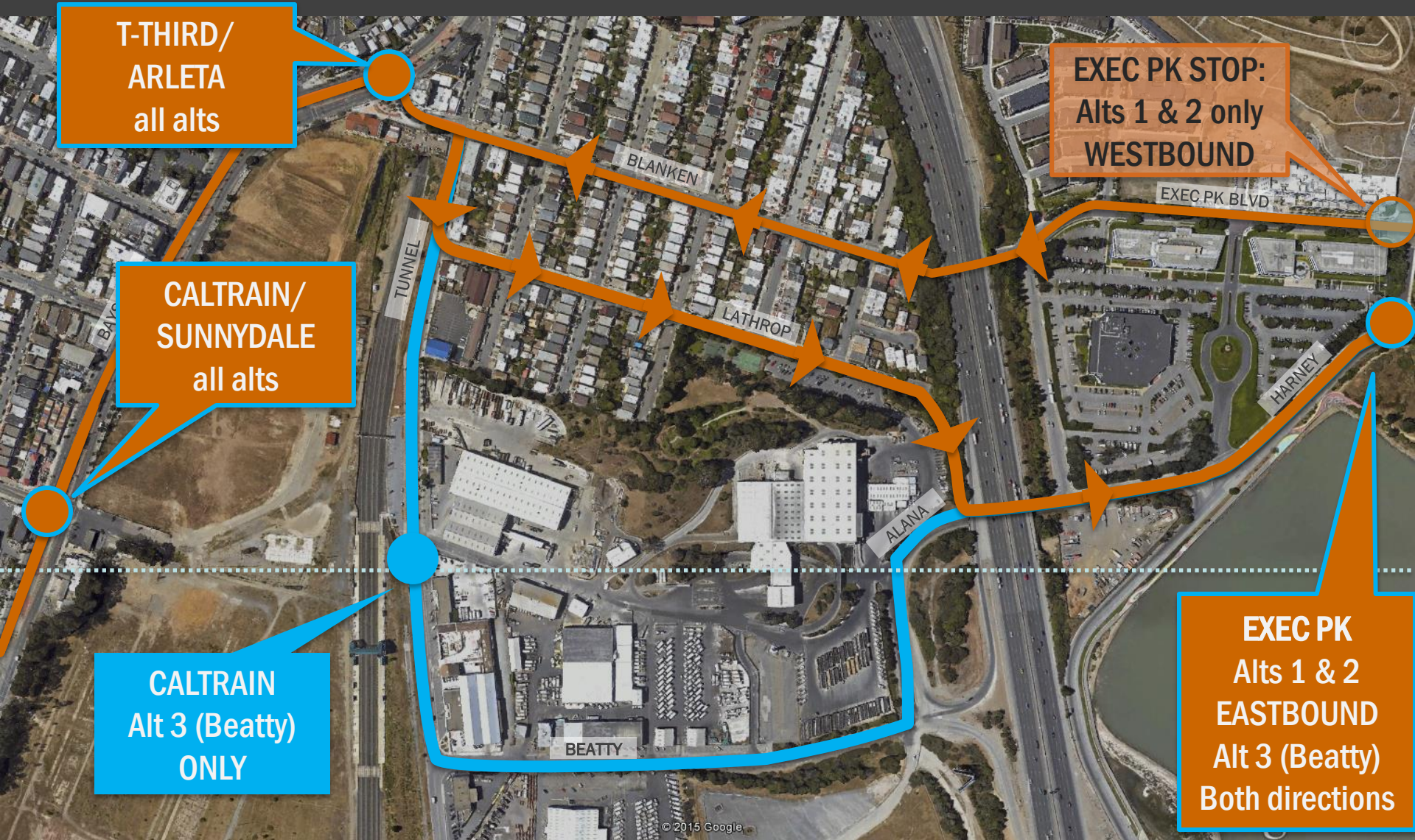
Geneva Configurations

Overview > Near-Term > What We Heard > Long-Term > Cost Estimates > Findings & Next Steps



Eastern Alignment Alternatives

Overview > Near-Term > What We Heard > Long-Term > Cost Estimates > Findings & Next Steps



**T-THIRD/
ARLETA**
all alts

**CALTRAIN/
SUNNYDALE**
all alts

CALTRAIN
Alt 3 (Beatty)
ONLY

EXEC PK STOP:
Alts 1 & 2 only
WESTBOUND

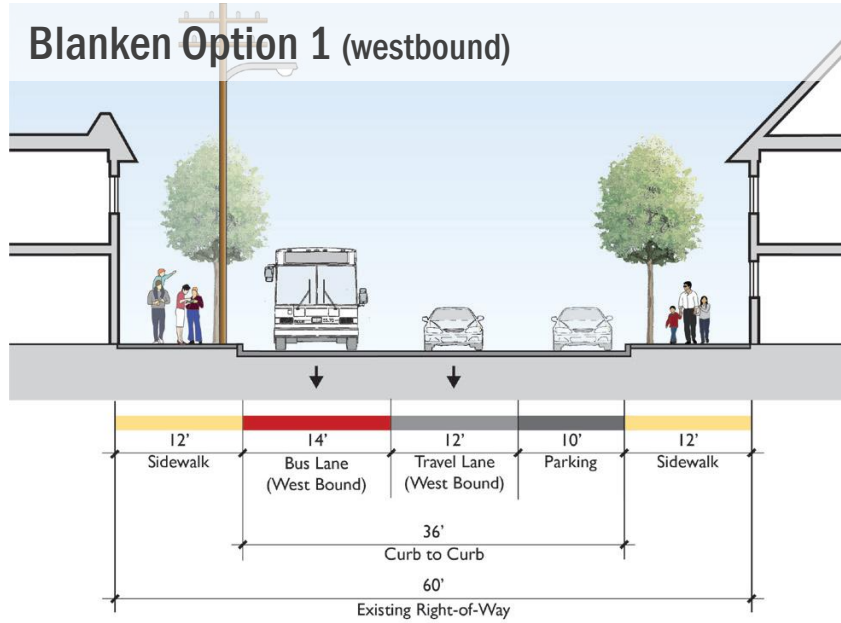
EXEC PK
Alts 1 & 2
EASTBOUND
Alt 3 (Beatty)
Both directions

Eastern Alternatives Configurations

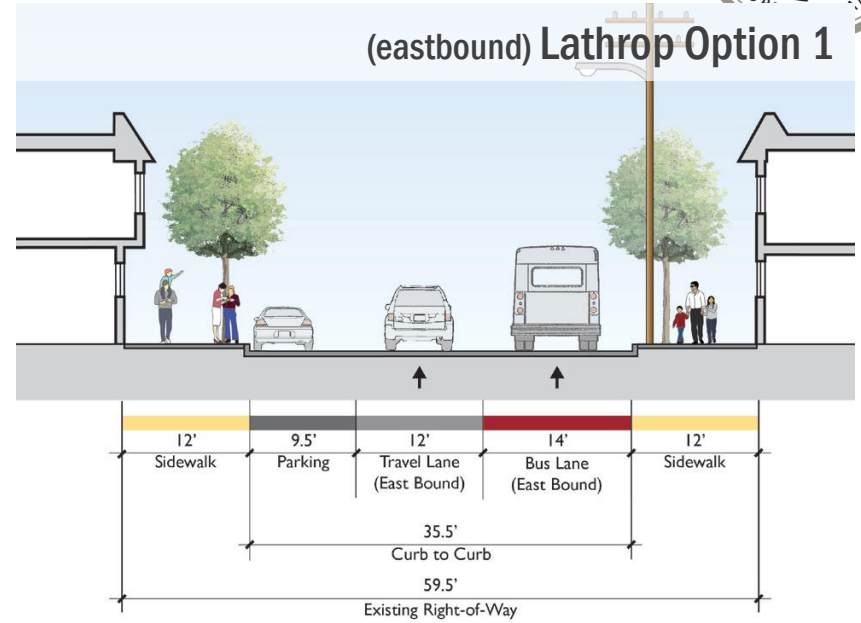
Overview > Near-Term > What We Heard > Long-Term > Cost Estimates > Findings & Next Steps



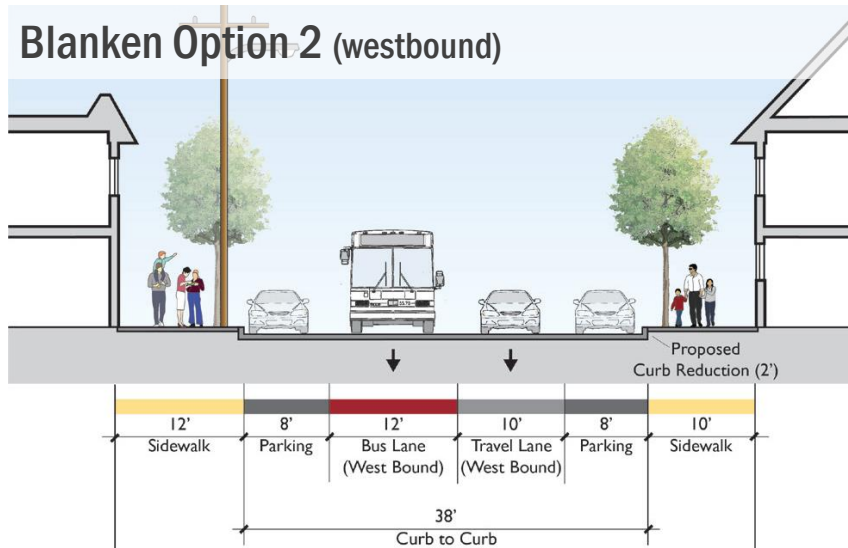
Blanken Option 1 (westbound)



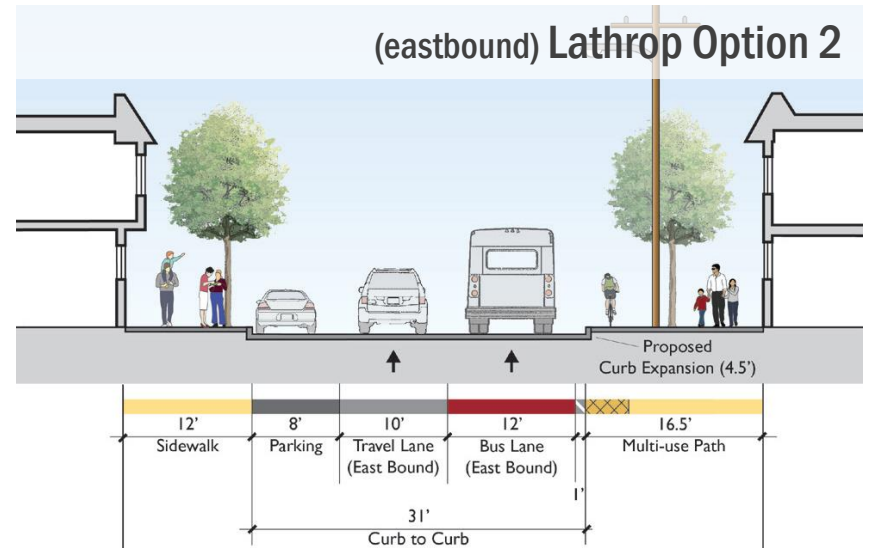
(eastbound) Lathrop Option 1



Blanken Option 2 (westbound)



(eastbound) Lathrop Option 2



Top Benefits, Top Concerns

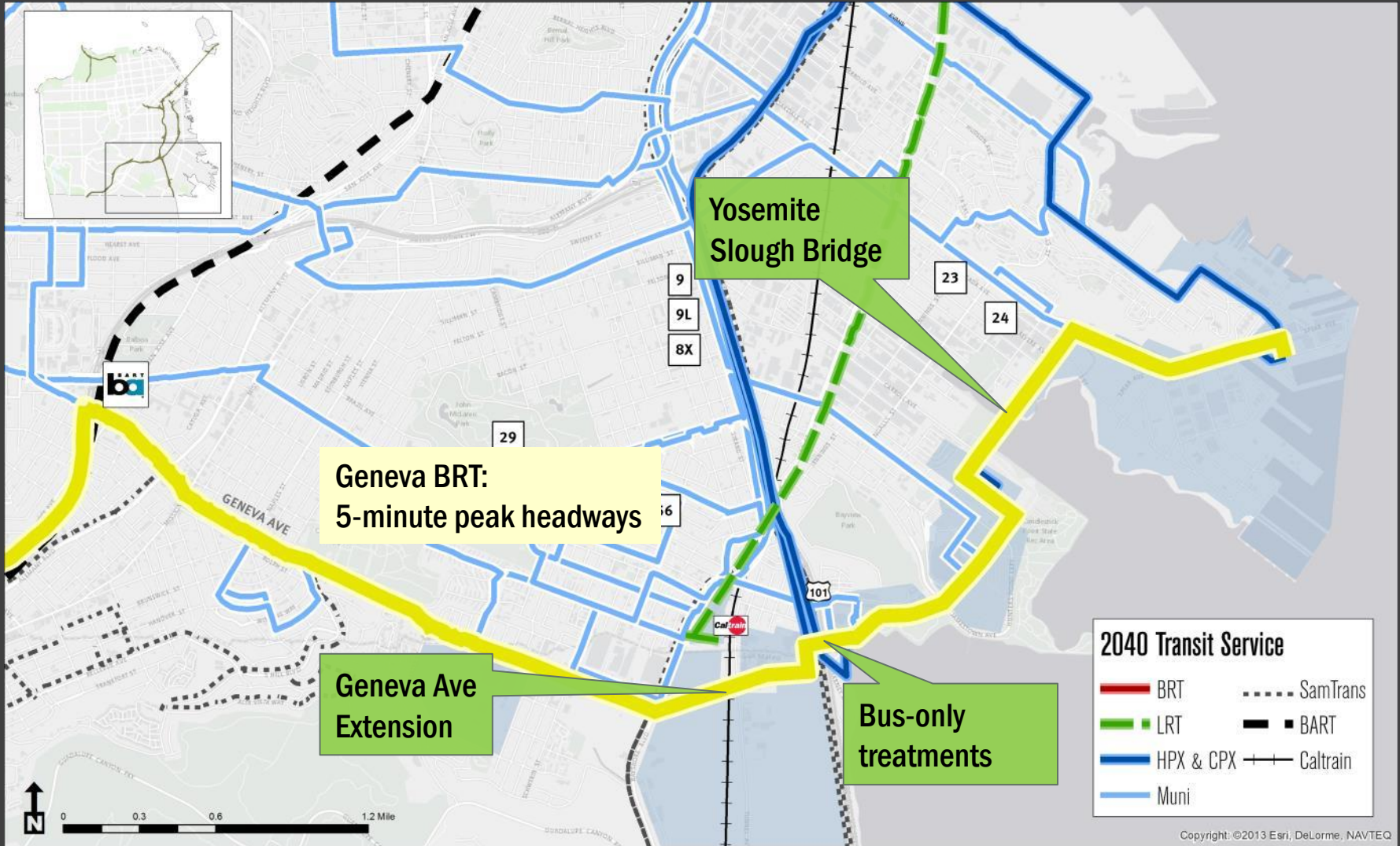
Overview > Near-Term > What We Heard > Long-Term > Cost Estimates > Findings & Next Steps



Benefits	Concerns
More reliable transit service	Impacts on parking availability
More frequent transit	Traffic diversions to residential neighborhoods
Fewer, more direct transfers	Change in neighborhood character
Safer crossing opportunities	Construction impacts
Safer bicycle facilities	Reduced turning opportunities

Long Term: Baseline 2040 Transit

Overview > Near-Term > What We Heard > Long-Term > Cost Estimates > Findings & Next Steps



Copyright: ©2013 Esri, DeLorme, NAVTEQ

Long Term: Light Rail Findings

Overview > Near-Term > What We Heard > Long-Term > Cost Estimates > Findings & Next Steps



- ▶ **LRT options create/improve direct downtown connection**
 - ▶ they have potential to increase ridership
 - ▶ one-seat ride from east-side to BART is desirable
- ▶ **LRT + BRT keeps competitive travel time with auto**
 - ▶ Higher frequency on Geneva than LRT only
 - ▶ Would require proactive street/signal management
- ▶ **Next steps**
 - ▶ additional coordination with partners (ie, Daly City)
 - ▶ enumerate key issues for future study

Next Steps

Overview > Near-Term > What We Heard > Long-Term > Cost Estimates > Findings & Next Steps



▶ Technical findings:

- ▶ There are feasible near-term options for closing this transit gap, eastern segment options need further refinement
- ▶ No fatal flaws for LRT, but more work needed on
- ▶ Community/stakeholder feedback re options & impacts

▶ Pre-environmental phase of work

- ▶ Refinement of alternatives
- ▶ Timeline for Beatty replacement
- ▶ LRT operational benefits

Led by SFMTA,
beginning this fall



Thank you!

For more information, please email genevabrt@sfcta.org
or visit genevabrt.org

