



# San Francisco Subway Vision

SFCTA Plans and Programs Committee

November 15, 2016



# San Francisco's 2016 Subway Vision

*Ordinance 202-15 amended transportation code such that San Francisco maintain a Subway Vision*

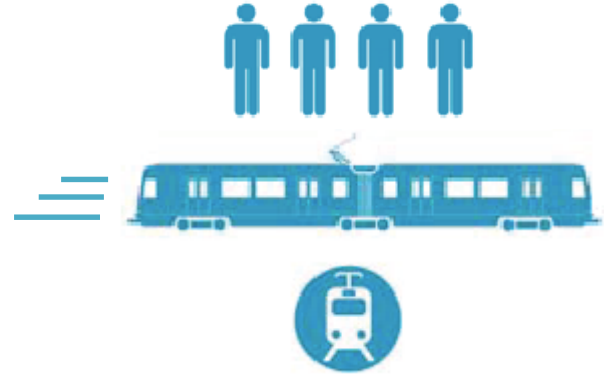
- Policy Guidance on Application of Subways
- Operator/Mode Neutral - Local and Regional Thinking
- List of Subway Candidate Corridors

Subway Vision will inform and be refined through ConnectSF Program

# Characteristics of Subways

## *Features:*

- Capacity
- Speed
- Reliability



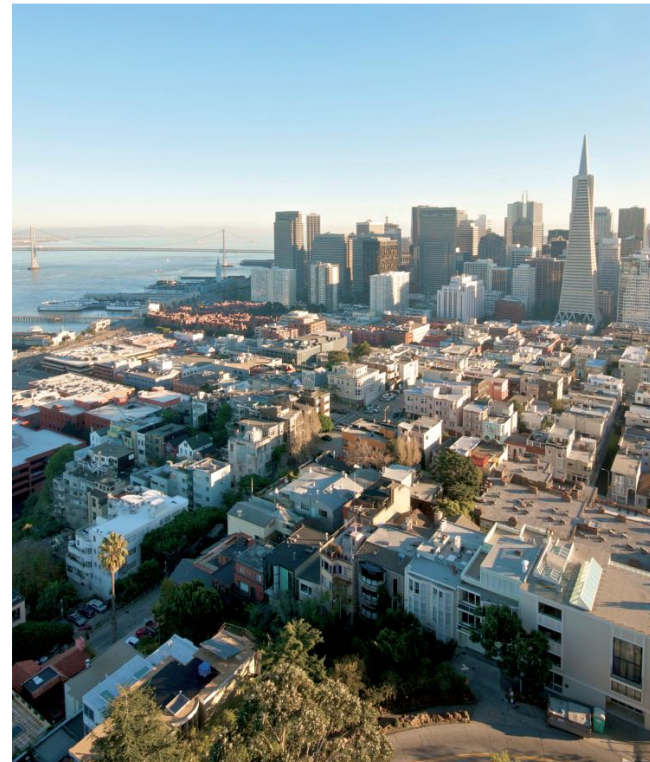
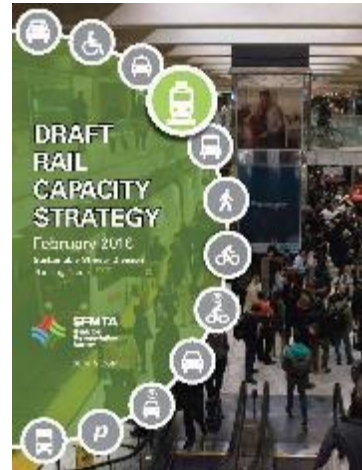
## *Tradeoffs:*

- Delivery Timeline
- Capital Cost
- Station Spacing & Access





# Prior Plan Review



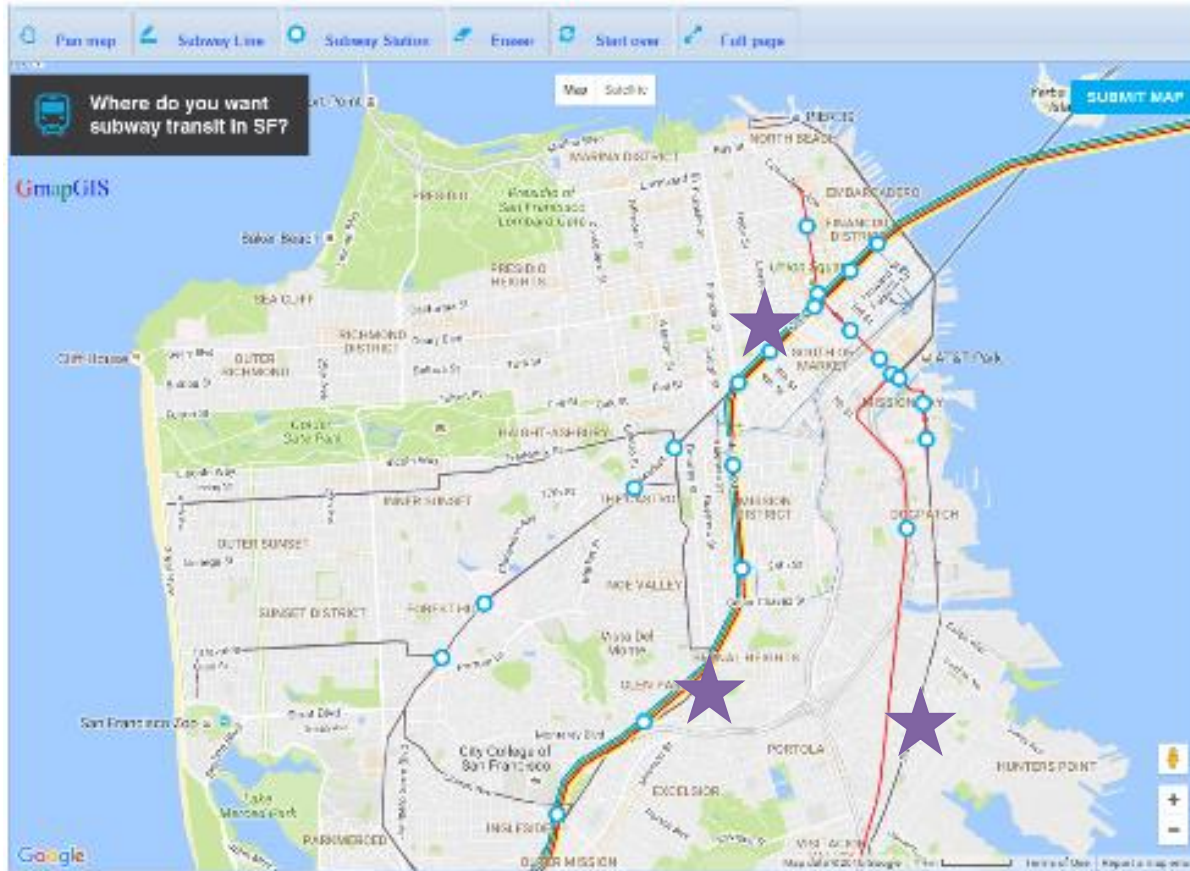
moveSmartSF  
**SAN FRANCISCO**  
TRANSPORTATION PLAN  
2040

FINAL REPORT  
DECEMBER 2013





# Outreach





# Online Outreach Results

## Subway Vision

Online Map Responses

October 2016

### Online Responses

Value



- Existing Subway
- Existing Surface Rail
- Rail Stations

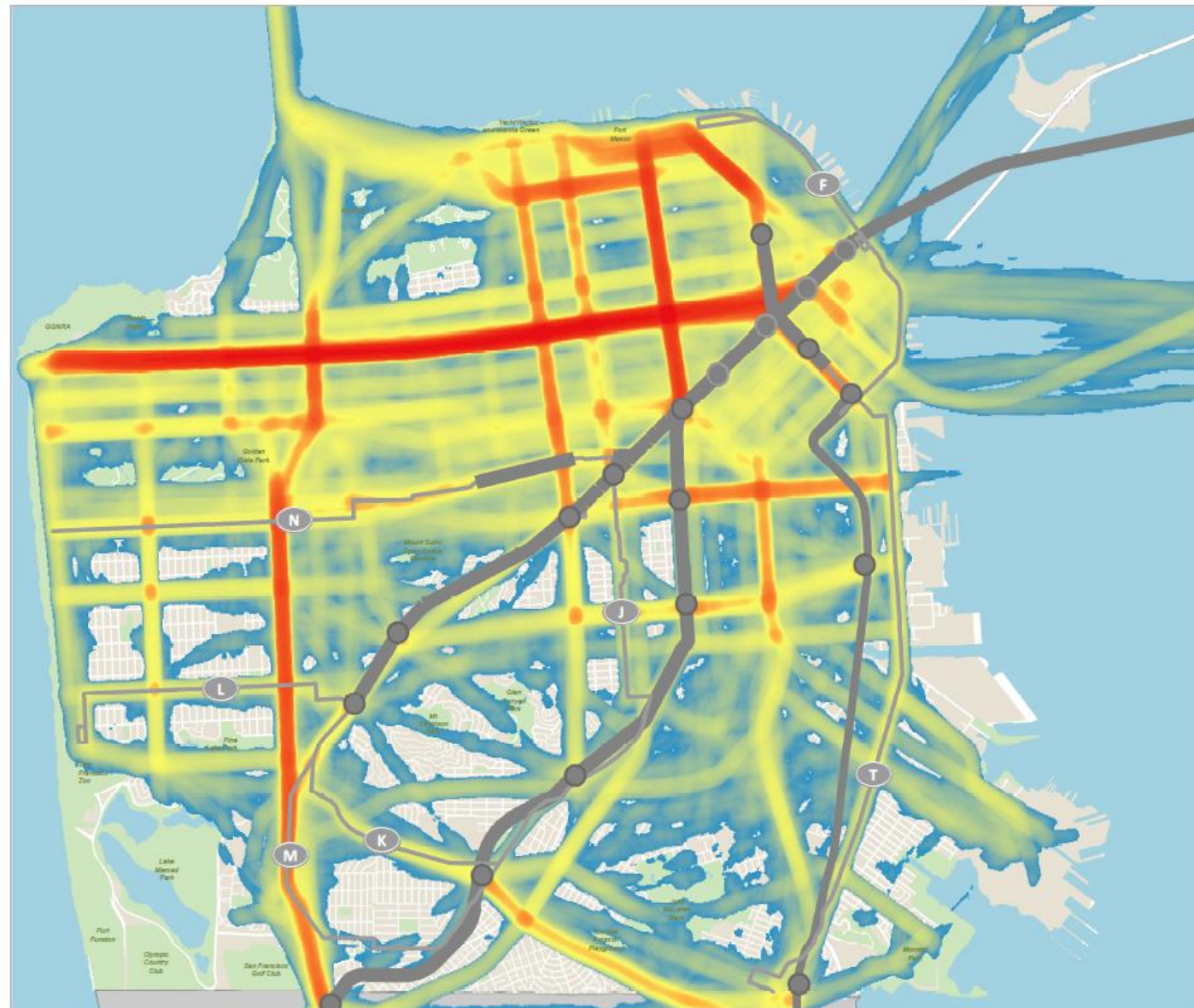


Scale 1:50,000

Date Saved: 10/12/2016

By downloading this map, you are agreeing to the following disclaimer: "The City and County of San Francisco ("City") provides the following data as a public record and no rights of any kind are granted to any person by the City's provision of this data. The City and County of San Francisco ("City") makes no representation regarding and does not guarantee or otherwise warrant the accuracy or completeness of this data. Anyone who uses this data for any purpose whatsoever does so entirely at their own risk. The City shall not be liable or otherwise responsible for any loss, harm, claim or action of any kind from any person arising from the use of this data. By accessing this data, the person accessing it acknowledges that she or he has read and does so under the condition that she or he agrees to the contents and terms of this disclaimer."

ConnectSF



# Pop-Up Outreach Results

## Subway Vision

Pop-Up Responses

October 2016

### Pop-Up Responses

Value



Existing Subway

Existing Surface Rail

Rail Stations



Scale 1:50,000

Date Saved: 10/14/2016

By downloading this map, you are agreeing to the following disclaimer: "The City and County of San Francisco ("City") provides the following data as a public record and no rights of any kind are granted to any person by the City's provision of this data. The City and County of San Francisco ("City") makes no representation regarding and does not guarantee or otherwise warrant the accuracy or completeness of this data. Anyone who uses this data for any purpose whatsoever does so entirely at their own risk. The City shall not be liable or otherwise responsible for any loss, harm, claim or action of any kind from any person arising from the use of this data. By accessing this data, the person accessing it acknowledges that she or he has read and does so under the condition that she or he agrees to the contents and terms of this disclaimer."

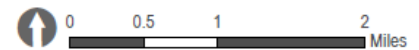
ConnectSF



# Needs Assessment & Analysis

## Projected Population Density 2040

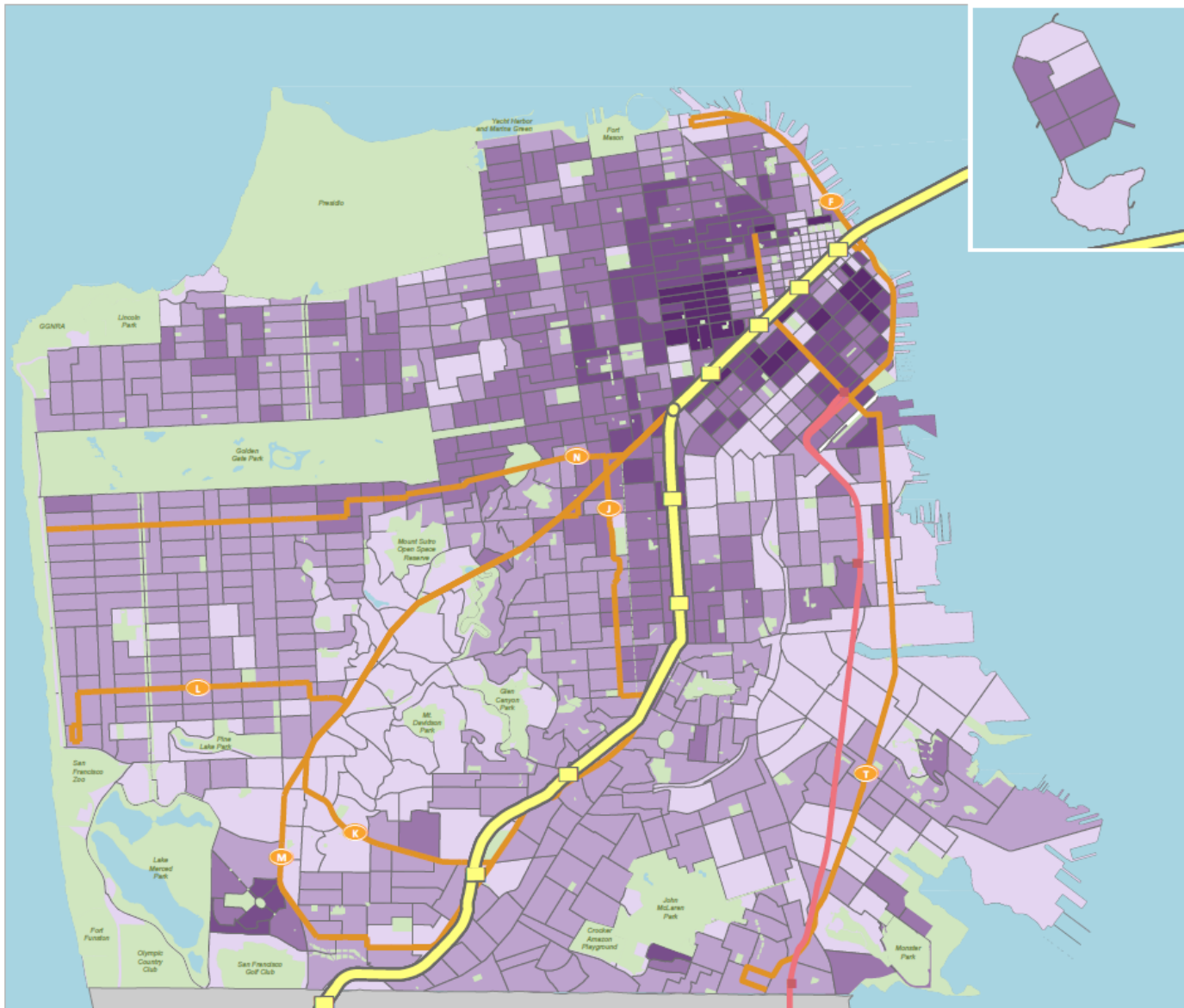
- Caltrain Stations
- Caltrain
- < 20 Residents per Acre
- 20 - 50
- 50 - 100
- 100 - 200
- 200 < Residents per Acre
- BART Stations
- Existing BART
- Existing Muni Rail
- Water Bodies
- Parks



Scale 1:50,000

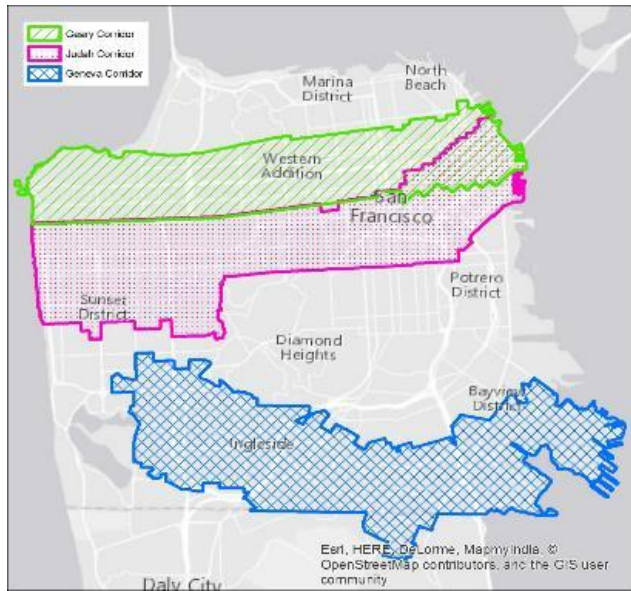
Date Saved: 8/11/2016

By downloading this map, you are agreeing to the following disclaimer: "The City and County of San Francisco ("City") provides the following data as a public record and no rights of any kind are granted to any person by the City's provision of this data. The City and County of San Francisco ("City") makes no representation regarding and does not guarantee or otherwise warrant the accuracy or completeness of this data. Anyone who uses this data for any purpose whatsoever does so entirely at their own risk. The City shall not be liable or otherwise responsible for any loss, harm, claim or action of any kind from any person arising from the use of this data. By accessing this data, the person accessing it acknowledges that she or he has read and does so under the condition that she or he agrees to the contents and terms of this disclaimer."





# Corridors for Evaluation



Cross Town – Connectors – Demand Based

# Major Corridor Concepts

## Subway Vision

Concept A

October 2016

Corridor Concepts

### Existing Rail

- Muni Subway
- Muni Surface Rail
- Muni Stations
- BART
- BART Stations
- Caltrain
- Caltrain Stations
- Water Bodies

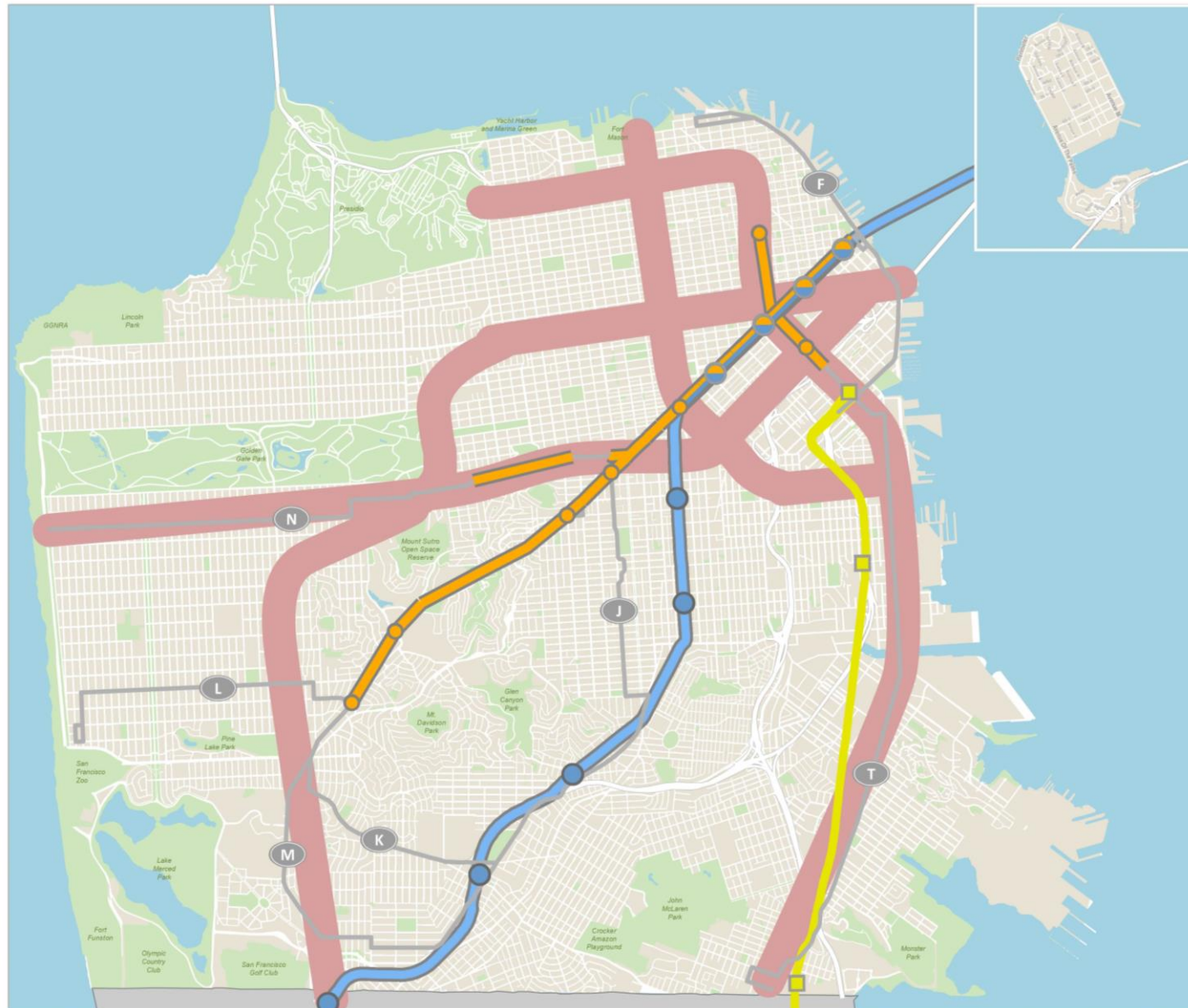


Scale 1:50,000

Date Saved: 9/16/2016

By downloading this map, you are agreeing to the following disclaimer: "The City and County of San Francisco ("City") provides the following data as a public record and no rights of any kind are granted to any person by the City's provision of this data. The City and County of San Francisco ("City") makes no representation regarding and does not guarantee or otherwise warrant the accuracy or completeness of this data. Anyone who uses this data for any purpose whatsoever does so entirely at their own risk. The City shall not be liable or otherwise responsible for any loss, harm, claim or action of any kind from any person arising from the use of this data. By accessing this data, the person accessing it acknowledges that she or he has read and does so under the condition that she or he agrees to the contents and terms of this disclaimer."

ConnectSF





# Major Corridor Concepts

## Subway Vision

Concept B

September 2016

Corridor Concepts

### Existing Rail

Muni Subway

San Francisco Surface Rail

Muni Stations

BART

BART Stations

Caltrain

Caltrain Stations

Water Bodies

Parks



Scale 1:50,000

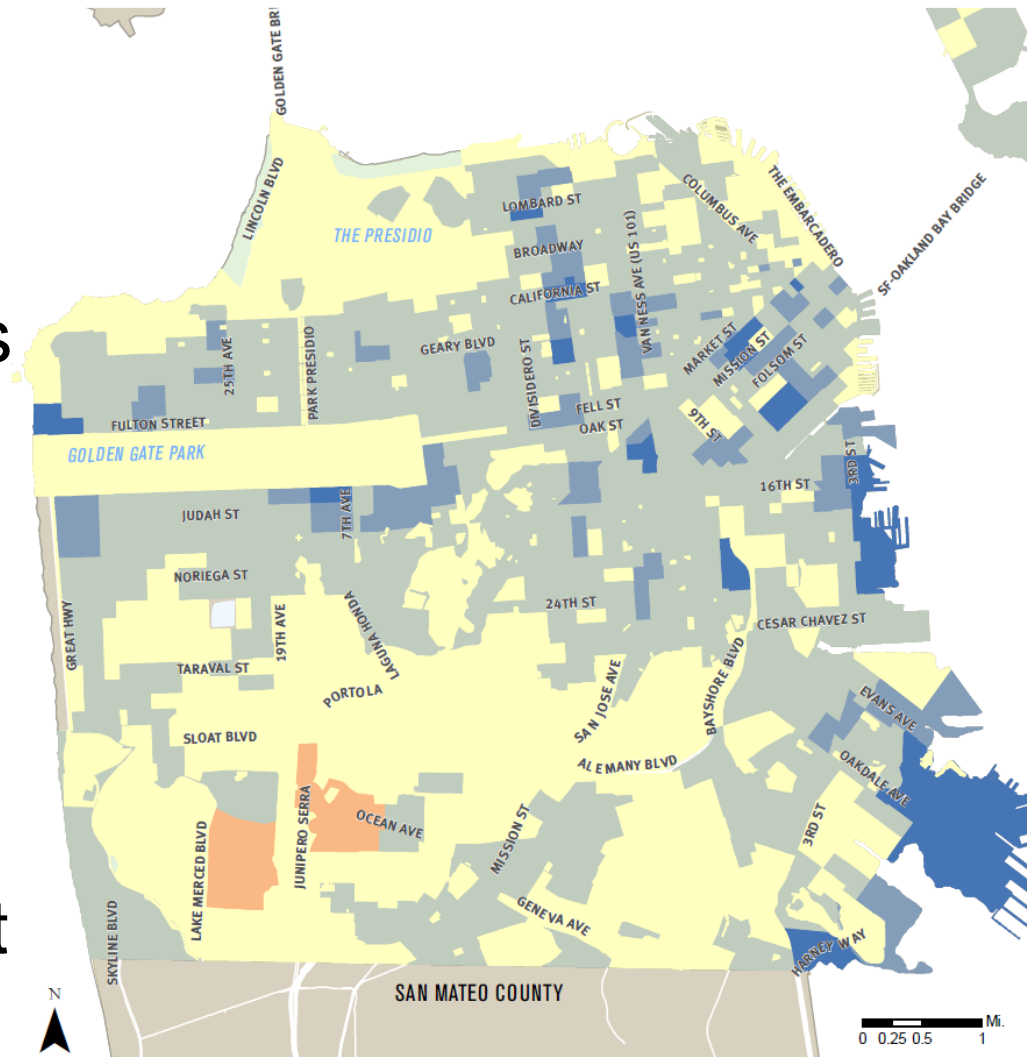
Date Saved: 9/16/2016

By downloading this map, you are agreeing to the following disclaimer: "The City and County of San Francisco ("City") provides the following data as a public record and no rights of any kind are granted to any person by the City's provision of this data. The City and County of San Francisco ("City") makes no representation regarding and does not guarantee or otherwise warrant the accuracy or completeness of this data. Anyone who uses this data for any purpose whatsoever does so entirely at their own risk. The City shall not be liable or otherwise responsible for any loss, harm, claim or action of any kind from any person arising from the use of this data. By accessing this data, the person accessing it acknowledges that she or he has read and does so under the condition that she or he agrees to the contents and terms of this disclaimer."

ConnectSF

# System Performance Findings

- Travel Time Savings
- Reliability Improvements
- Increased Ridership
- Enhanced Accessibility
- Low Income Riders Benefit

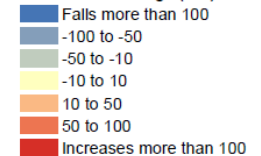


## Subway Vision Transit Travel Time

Total Difference for  
All Trips (hours)

Concept B vs. 2040 Baseline

## Concept B v. 2040 Baseline Travel time savings (hrs)





# Evaluation Metrics

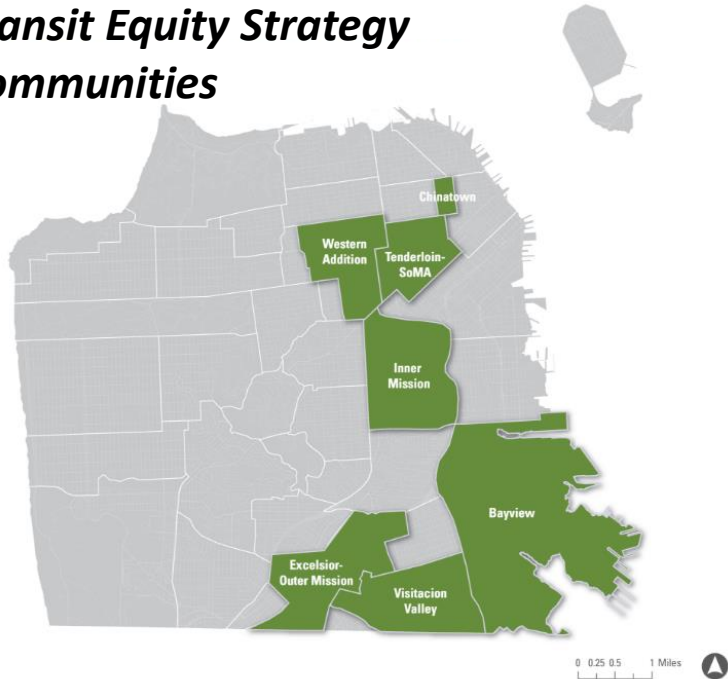


*Boardings*



*Travel Time*

## **Transit Equity Strategy Communities**

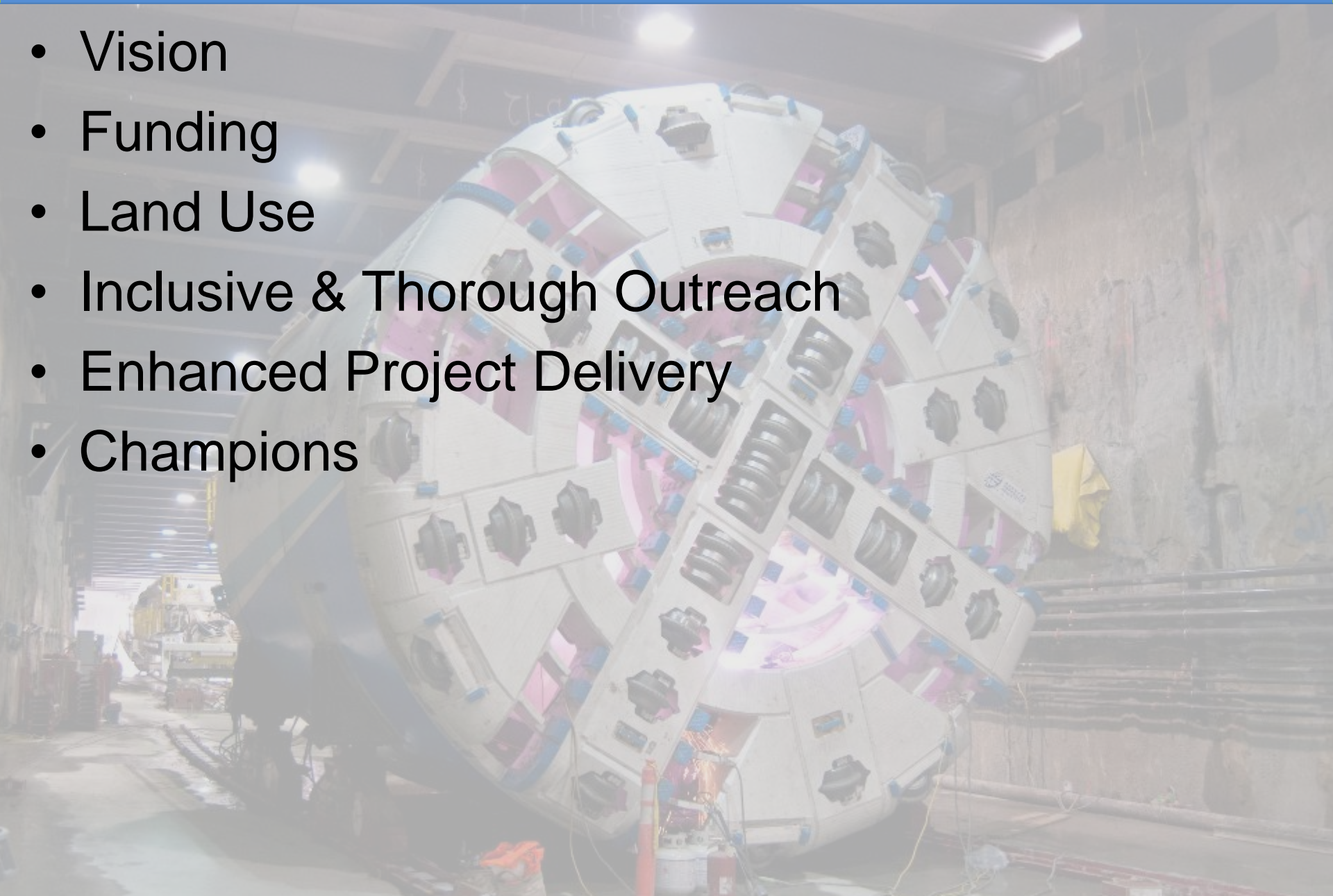


*System Integration*



# Developing the Subway Vision

- Vision
- Funding
- Land Use
- Inclusive & Thorough Outreach
- Enhanced Project Delivery
- Champions





# Next Steps

- Final Subway Vision End of 2016

# ConnectSF

[www.connectsf.org](http://www.connectsf.org)



EQUITY



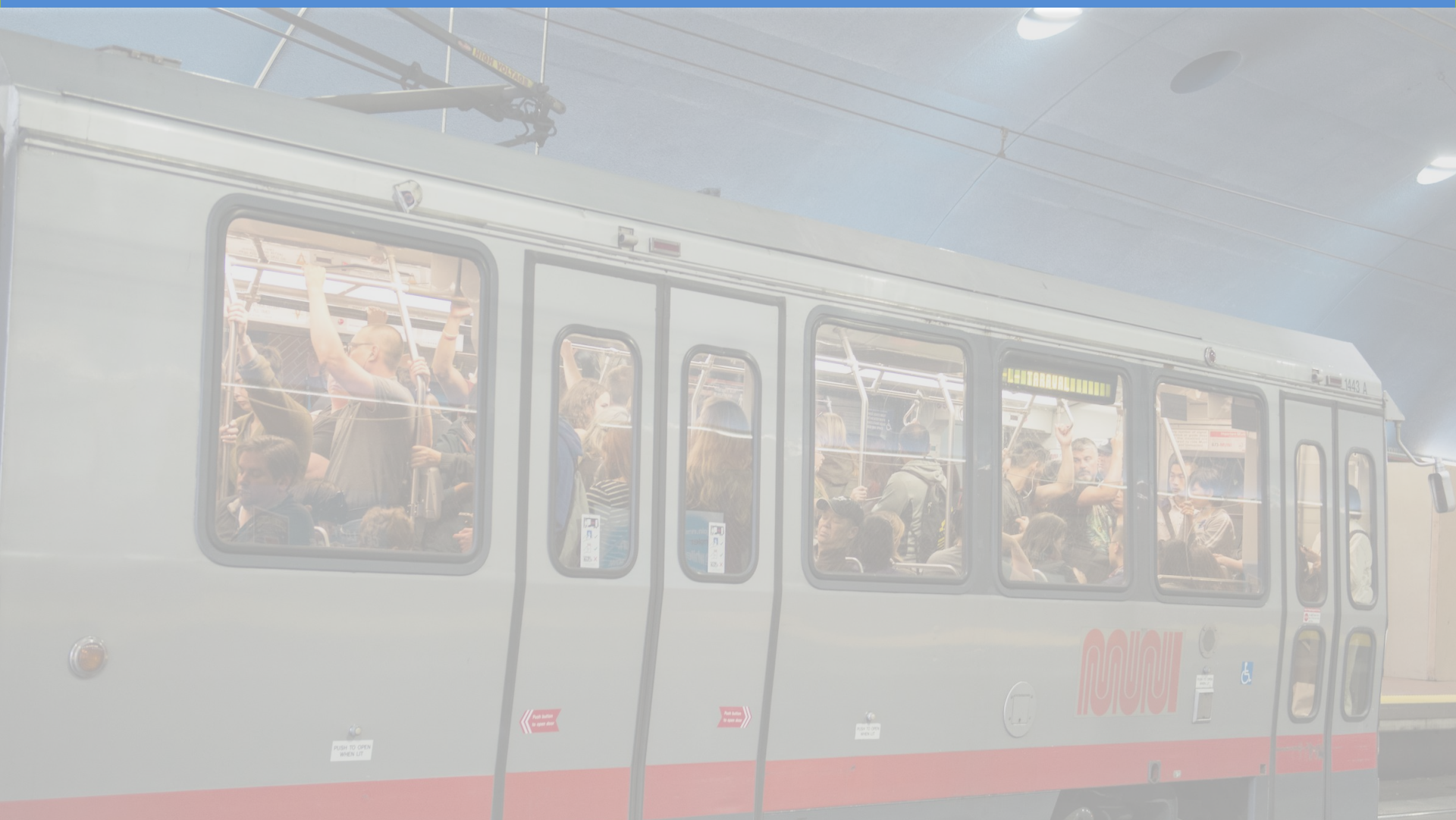
SAFETY AND LIVABILITY



ENVIRONMENTAL  
SUSTAINABILITY



ECONOMIC VITALITY



**Michael Schwartz**

Principal Transportation Planner, SFCTA

[Michael.Schwartz@sfcta.org](mailto:Michael.Schwartz@sfcta.org)

**Grahm Satterwhite**

Principal Planner, SFMTA

[Sarah.Jones@sfmta.com](mailto:Sarah.Jones@sfmta.com)

[Connectst.org](http://Connectst.org)